



LAWNDALE  
ELEMENTARY SCHOOL DISTRICT



PHOTOGRAPHY

# Single Plans for Student Achievement

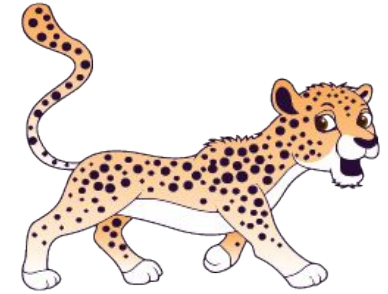
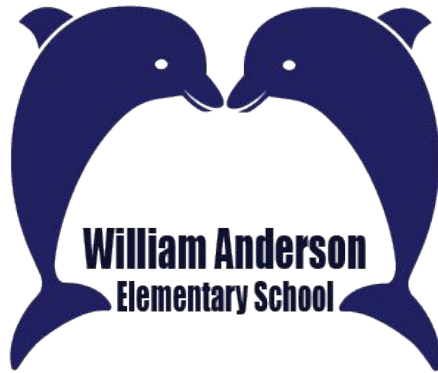
## Board of Trustees Meeting

October 5, 2023

Presented by School Principals



# Lawndale Schools

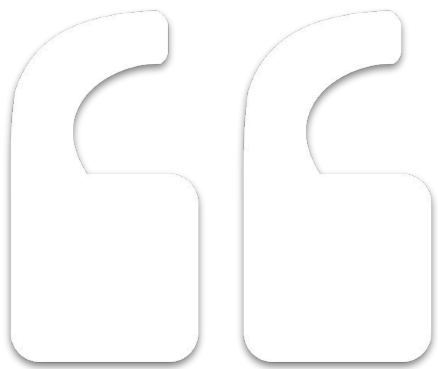


**Lucille Smith  
Elementary School**



**Billy Mitchell  
Elementary School**





**“The only way to make change is to see these challenges that we face as opportunities.”**

*-Adam Bellow*



# Single Plans Support the Whole Child



## 01 Increase Academic Achievement

Ensure all students learn through access to high quality actions and services that increase academic achievement and civic, career, and college readiness.



## 02 Ensure Access & Equity

Provide high quality actions and services to eliminate barriers to student access to required and desired areas of study.



## 03 Improve Parent & Student Engagement

Ensure all schools have safe, welcoming, healthy and inspiring climates for all students and families, so that all students are behaviorally and academically engaged in school and ready to learn.

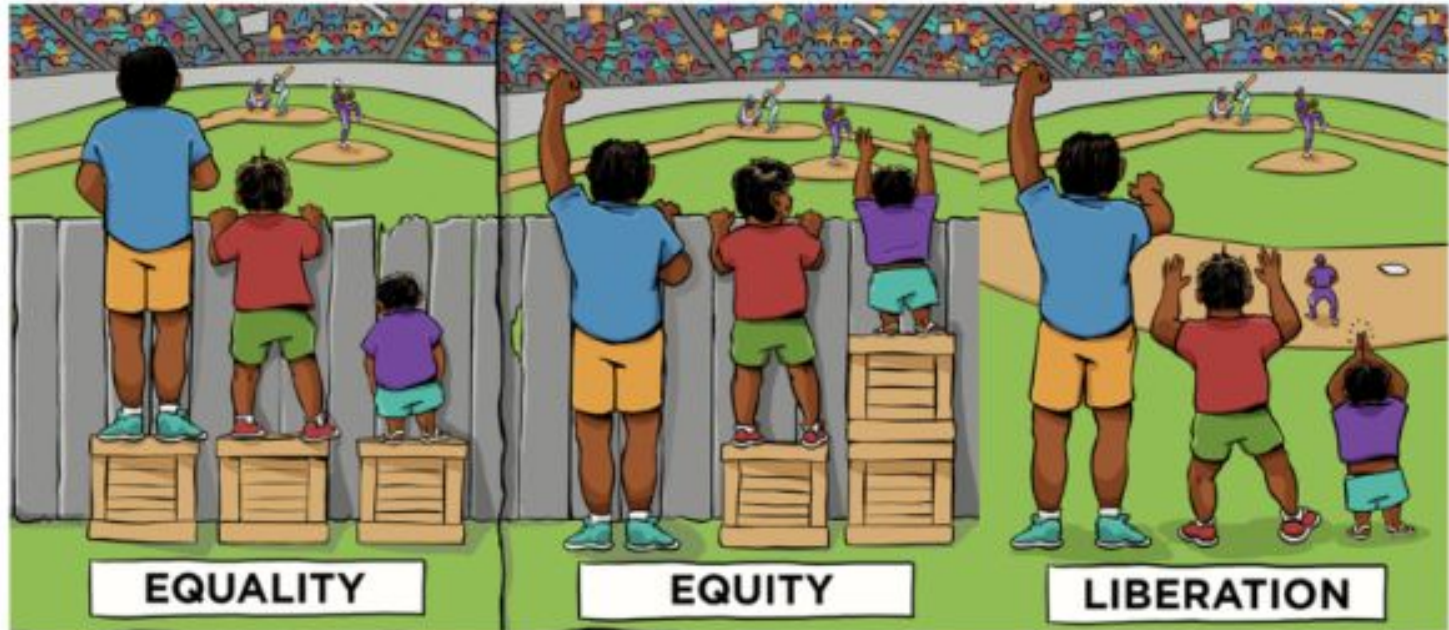


## 04 Provide 21st Century Learning Environments

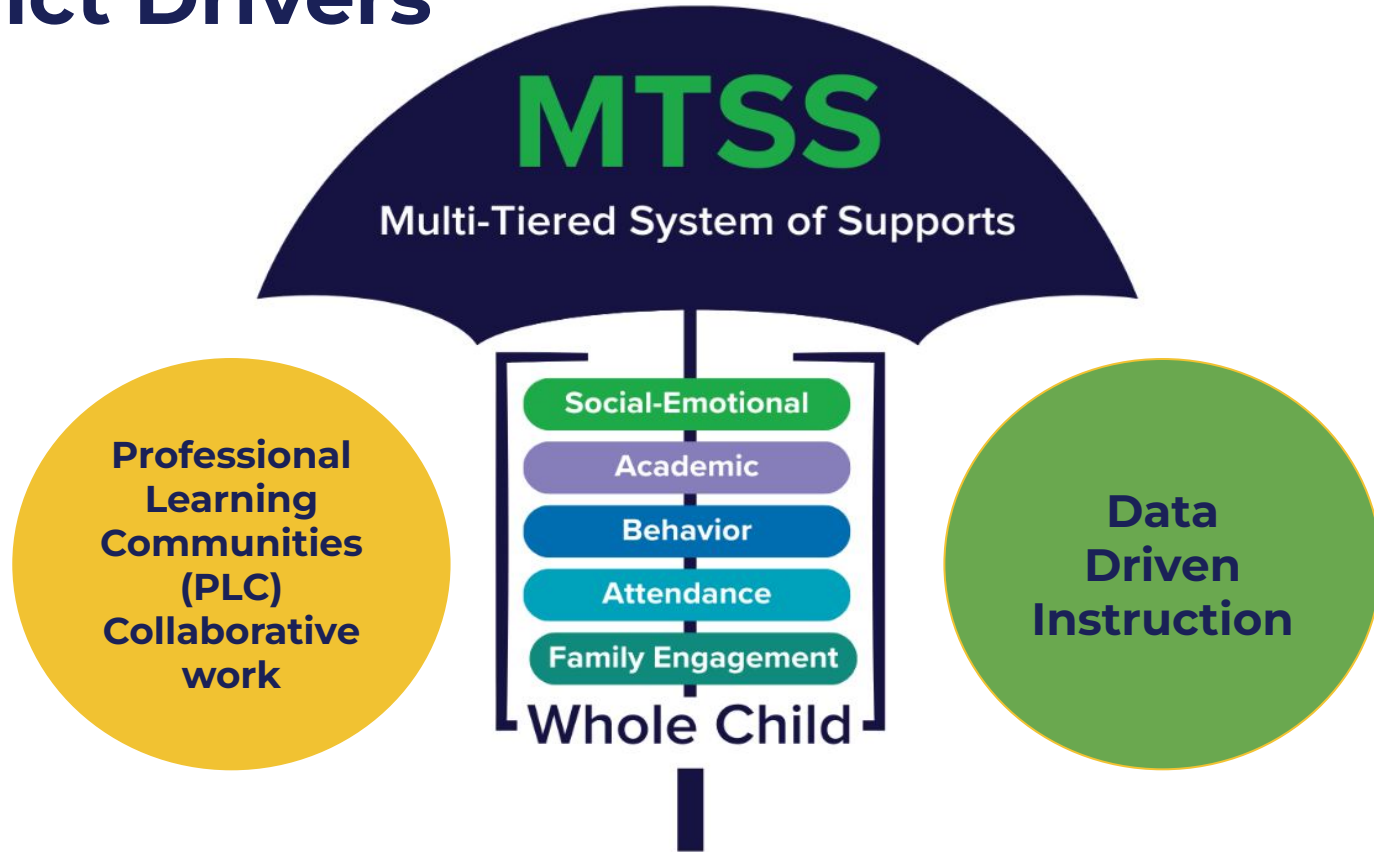
Invest in optimal learning environments that enhance student learning and ensure safety.



# Resources Used Equitably



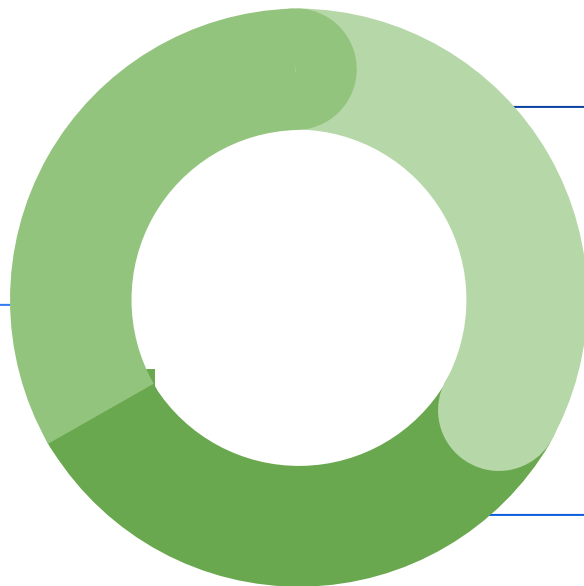
# District Drivers



# Developing an Effective Single Plan

## Identify Student Needs Based On Achievement Data

*\*identify intended outcomes + develop strategies and action plans*



## Implement Action Plan to Address Student Need

*\*data + stakeholder input*

## Evaluate Effectiveness

*\*ongoing with changes made to reflect shifting growth and need*

# Continual Progress Monitoring



**Evaluate  
Effectiveness**

## **Tools (Formal + Informal)**

- Local Assessments
- Statewide Assessments
- Observational Data
- Anecdotal Evidence
- Stakeholder Feedback & Surveys

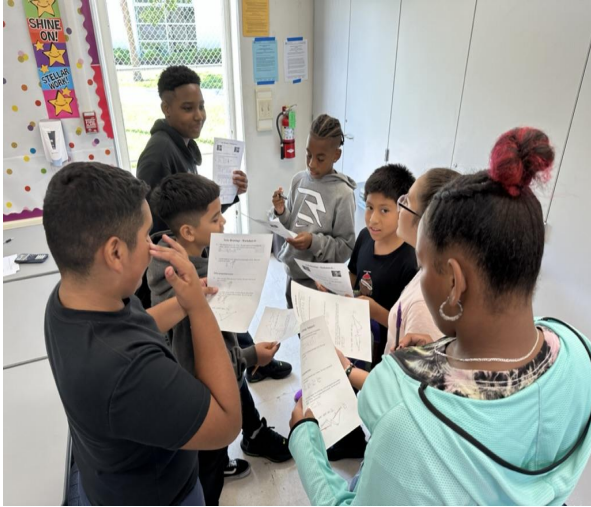
## **Frequency (Formal + Informal)**

- Regularly/Daily
- Periodically (Progress Reports + Report Cards)
- Trimester Assessments
- Site Data Analysis Days (identified Thursdays)
- School Site Council & ELAC Meetings
- Regular Site Leadership + Staff Meetings
- First and Second Interim Budget Meetings
- Annual Analysis of Statewide Assessments

*\*Single Plans are updated continually throughout the year to address student need as it changes.*



# Goal 1 - Increase Academic Achievement



# Goal 1 - Increase Academic Achievement

Identify Need	Action Plan & Allocation of Resources	Evaluating Effectiveness
Increase academic achievement by providing instructional/planning support to teachers	Sites provide additional hours and/or sub release for teacher collaboration to analyze data and plan next steps	Evaluate progress on iready and district assessments

# Goal 2 - Ensure Access and Equity



# Goal 2 - Ensure Access and Equity

Identify Need	Action Plan & Allocation of Resources	Evaluating Effectiveness
Identified need for specific student groups that have been historically marginalized and underachieving.	Sites allocated for instructional assistants and additional hours for teachers to provide academic interventions before, during and after school.	Ongoing progress monitoring data evaluated for effectiveness of the interventions.



# Goal 3 - Improve Parent and Student Engagement

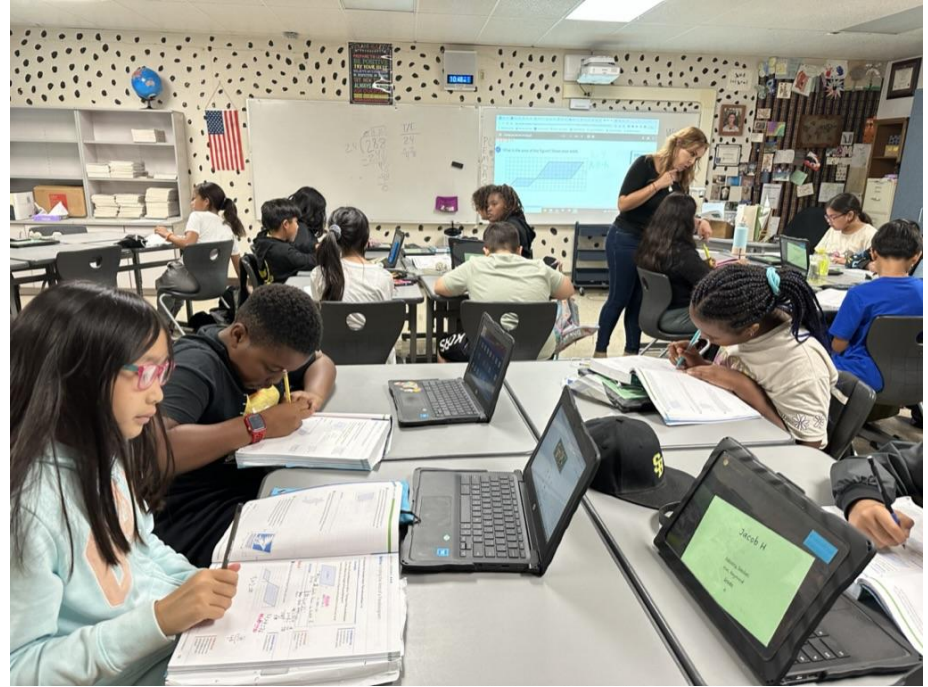


# Goal 3 - Improve Parent and Student Engagement

Identify Need	Action Plan & Allocation of Resources	Evaluating Effectiveness
Need to engage students and parents with instruction and support social emotional needs	Sites allocate funds for PBIS incentives, sensory objects, additional hours for support staff, and materials for parent workshops	Ongoing monitoring of attendance data, office referral data, and an increase in parent participation at workshops

*\*Parent Workshop Topics selected based on parent input surveys, parent meetings, PBIS + attendance data, site trends and needs, safety, and home/school connection + partnership.*

# Goal 4 - Provide 21st Century Learning



# Goal 4 - Provide 21st Century Learning

## Identify Need

Need to provide access to technology and 21st century skills so that our students can be competitive in the real world

## Action Plan & Allocation of Resources

Sites allocate funds to purchase technology, Makerspace items, supplies, coding and funds

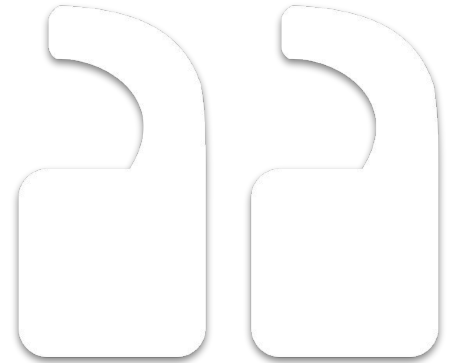
## Evaluating Effectiveness

Monitor usage of Makerspace and access to technology, monitor articulation of skills from elementary to middle school



**“Education then, beyond all other devices of human origin, is the great equalizer of the conditions of men, the balance-wheel of the social machinery.”**

- Horace Mann



**Thank you.**