



## **DISTRICT UPDATE**

**May 26, 2023**

*From the Office of Superintendent Michael Kellison*  
3150 Education Drive Santa Rosa, CA 95407  
(707) 542-5197 [www.busd.org](http://www.busd.org)



### ***Mission:***

*Inspire learning*

### ***Vision:***

*Engaging and ❤️ (valuing/caring) for our families, students and staff to empower our community.*

Dear Bellevue Union School District Families and Staff,

The month of May is filled with activity as the school year comes to a close. Students are completing their final local and state assessments, while also preparing for their end of the year showcases including Open House. Additionally, we take time to honor and celebrate our students as they transition from one grade level to the next. In particular, we focus on our grade six students who move from our District to middle school. This is a big step in a child's life as they leave the comfort of their elementary school to begin their secondary education. We thank our students and their families for their contributions to our District during their time in the Bellevue Union School District.

### **State of the District**

**California Education Partners Grant:** We have been fortunate enough to have been selected by the California Education Partners to participate in a three year grant focusing on the development of a coherent mathematics program from TK to grade 3. The District team has been selected and it will be composed of each of our site principals, Director of Curriculum, District TOSA and a teacher representative from each of the aforementioned grade levels from each of the four school sites. We are excited about this work as we have identified mathematics as our next focal area as a District. We will be presenting periodic updates throughout the school year as this team engages in this very important work on behalf of our students.



**Appreciation for Outgoing Trustee:** I would like to take a moment to thank outgoing Trustee John Jarvis for his contributions to the Bellevue Union School District during his time on the Board. John, "Captain America", Jarvis has served his community with distinction during his tenure. He is the epitome of a 'student first' trustee and his insights and candor will be missed. While John's reasons for running for the Board originally were grounded in his frustrations, he has demonstrated the capacity to see the big picture and to understand the role of a trustee. Personally, I have welcomed John's open and honest dialogue about education and the needs of our District. He is a good person and someone who will always serve as an advocate for the Bellevue Union

School District.

As the year comes to a close, I want to express my gratitude for the Bellevue community as they have welcomed me and supported me throughout my first year as the Superintendent. Although we have

experienced some unanticipated challenges this year, we have also had much to celebrate. Our District is headed in the right direction and all signs point toward a bright future for BUSD. I look forward to the journey ahead.

With pride,  
Michael Kellison

### SCHOOL SITE UPDATES:

Bellevue Elementary School	
<b>Office hours:</b> Monday-Friday, 8:00-4:30	<b>Contact Us @</b> 707-542-5195
<b>Principal,</b> Nina Craig: <a href="mailto:ncraig@busd.org">ncraig@busd.org</a>	<b>Office Assistant,</b> Blanca Ramirez: <a href="mailto:bramirez@busd.org">bramirez@busd.org</a>
<b>Office Manager,</b> Karina Martinez: <a href="mailto:kmartinez@busd.org">kmartinez@busd.org</a>	<b>Family Engagement Facilitator,</b> Amy Flores Casares: <a href="mailto:aflorescasares@busd.org">aflorescasares@busd.org</a>

Upcoming Meetings & Events:	
Monday, May 29	No School, Memorial Day
Tuesday, May 30: 9:00am	School Carnival
Wednesday, May 31: 11:30am	Kindergarten Promotion
Thursday, June 1: 9:30am	Sixth Grade Promotion Last Day of School
Thursdays after school	3rd-6th Chorus
Fridays after school	5th grade Marimba

---

Kawana Springs Elementary School	
<b>Office hours:</b> Monday-Friday, 7:30-4:00	<b>Contact Us @</b> 707-545-4283
<b>Principal,</b> Denise McCullough: <a href="mailto:dmccullough@busd.org">dmccullough@busd.org</a>	<b>Office Assistant,</b> Michelle Williams: <a href="mailto:mwilliams@busd.org">mwilliams@busd.org</a>
<b>Office Manager,</b> Susy Bradley: <a href="mailto:sbradley@busd.org">sbradley@busd.org</a>	<b>Family Engagement Facilitator,</b> Erika Corrales: <a href="mailto:ecorrales@busd.org">ecorrales@busd.org</a>

Upcoming Meetings & Events:	
Friday, May 26: Times Vary	Student of the Month assemblies
Friday, May 26: 4:30-6:30pm	Cougar Fest
Monday, May 29	No school- Memorial Day
Tuesday, May 30: 1:00pm	Kindergarten Promotion
Wednesday, May 31: 3:00pm	6th grade Promotion
Thursday, June 1	Last day of school, Early Dismissal 12:25
Other Events:	
Thursdays throughout summer break, 10:00-11:00 am	Food Pantry

Meadow View Elementary School	
<b>Office hours:</b> Monday-Friday, 7:30-4:00	<b>Contact Us @</b> 707-541-3715
<b>Principal,</b> Jean Walker: <a href="mailto:jwalker@busd.org">jwalker@busd.org</a>	<b>Office Assistant,</b> Isabel Luna: <a href="mailto:imluna@busd.org">imluna@busd.org</a>
<b>Office Manager,</b> Natali Ramirez: <a href="mailto:namirez@busd.org">namirez@busd.org</a>	<b>Family Engagement Facilitator,</b> Paula Hernandez: <a href="mailto:pfernandez@busd.org">pfernandez@busd.org</a>

Upcoming Meetings & Events:	
Thursday, May 25th: 1:00	Field Day (1st-6th)
Friday, May 26th 1:45 1st-3rd 2:15 4th-6th	Student of the month
Monday, May 29th	No school Memorial Day
Wed, May 31: 9:00 am	6th Gr. Promotion
Thurs, June 1	Kinder promotion @ 9:00am Last Day of School Early Dismissal 12:25 pm
Other Events:	

Tuesdays: 2:00-3:00 pm	Food Pantry
Thursdays: 2:45 - 3:35 pm	Marimba Lesson, 5th gr.
Fridays after school	Move over Mozart
Tuesdays after school	3rd-6th Chorus

Taylor Mountain Elementary School	
<b>Office hours:</b> Monday-Friday, 7:30-4:00	<b>Contact Us @</b> 707-542-3671
<b>Principal,</b> Margaret Jacobson: <a href="mailto:mjacobson@busd.org">mjacobson@busd.org</a>	<b>Office Assistant,</b> Hope Leon: <a href="mailto:hleon@busd.org">hleon@busd.org</a>
<b>Office Manager,</b> Julie Roza: <a href="mailto:jroza@busd.org">jroza@busd.org</a>	<b>Family Engagement Facilitator,</b> Elida Guerrero: <a href="mailto:eguerrero@busd.org">eguerrero@busd.org</a>

Upcoming Meetings & Events:	
Wed, May 31: 10:30 am	6th Gr. Promotion
Thurs, June 1	Field Day Last Day of School Early Dismissal 12:25 pm
Other Events:	
Thursdays: 10:00 - 11:00 am	Food Pantry; this will continue through the summer!
Thursdays after school (2:40-4:20 pm)	Move over Mozart
Fridays after school (2:40-4:10 pm)	3rd-6th Chorus

### DISTRICT UPDATES:

**Business Service:** Chris Kim, CBO ([business@busd.org](mailto:business@busd.org))

Governor Gavin Newsom released the 2023-24 May Revision, which reflects a statewide budgetary shortfall of \$31.5 billion. Although the May Revision adjusts and fully funds the LCFF COLA at 8.22 percent, about \$3.4 billion when combined with declining enrollment, the State Budget does include an estimated 30% reduction to the Arts, Music, and Instructional block grant and an estimated 50% reduction to the learning loss recovery block grant. These updated variables - among others - will be included and explored further as part of the District's multi-year projections in the 2023/24 Budget.

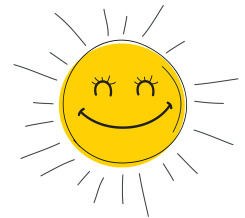
On a related note, the District's 2023/24 Fiscal Year Budget and Local Control Accountability Plan (LCAP) will be available for public inspection the week of June 19, 2023 at the Bellevue Union School District Office during regular business hours. The Public Hearing is subsequently scheduled for June 26, 2023 at 5:30pm.

---

Curriculum and English Learners: Aracely Romo-Flores, Director ([curriculum@busd.org](mailto:curriculum@busd.org))

### ***Summer School***

We are extremely excited to offer our students a wonderful learning experience this summer during our summer sessions. Due to the high volume of students that applied for the program, we were unable to accommodate everyone. All families of enrolled students have been notified of their placement in one or both of the sessions. If your child did not receive a written notification, he/she has been placed on the waitlist, and families will be contacted should space become available. We apologize for the inconvenience and we appreciate your family's desire to provide your child with a summer learning session.

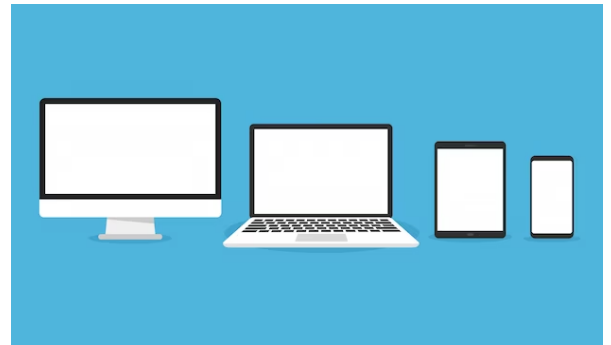


Should you have any questions, please feel free to contact your site's Family Engagement Facilitator for further information.

### ***Other Summer Learning Opportunities***

Because space is limited for our Summer School program and we want to support all students, BUSD encourages all returning TK through fifth graders to continue to use the wonderful computer adaptive learning programs that are available throughout the school year. These programs are available wherever there is internet connection over the summer. These programs will support students' literacy and math skills. They adjust accordingly to how students perform on the learning tasks. If the task is too challenging or too easy, the program will automatically adjust to the students' performance level. The programs will support all students with the appropriate learning level and help them improve their academic skills.

We recommend that students use Lalilo if they are not yet reading independently in English. If students are reading somewhat independently, we recommend students use Freckle Language Arts (available in English and Spanish). For our Dual Immersion students at Kawana Springs, we recommend the students practice their Spanish reading skills using Imagine Español. All students are encouraged to use Freckle Math (available in English and Spanish) to develop their math skills. Each of these programs should be used 15 -20 minutes per day.



All of these programs will be accessible all summer long through Clever. All of our students are familiar with the Clever login portal. Here is more information about these programs:

**Lalilo (K-2):**

Is an online learning platform that will help your students learn foundational reading skills in:

- Phonics (Letter-sound Correspondence)
- Phonological awareness
- Sight words
- Word families
- Independent reading
- Listening comprehension
- Grammar and conventions

Recommended Usage Time: 15-20 minutes daily

**Freckle Math and English Language Arts (K-6):**

Freckle Math and English Language Arts is an online learning platform that allows students to practice Math and English Language Arts at their own level. Freckle continuously adapts to each student's individual skills, so each student is getting the appropriate challenge, whether they're working at, above, or below grade level.

Recommended Usage Time: 15-20 minutes daily per content area (15-20 minutes for English Language Arts and 15-20 minutes for Math)

The following are the directions for accessing this platform:

- [Steps for Freckle ENG](#)
- [Stepf for Freckle SPAN](#)

**Imagine Español (TK-5):**

Imagine Español is a personalized learning solution that accelerates grade-level reading and language proficiency in Spanish for our **Kawana Springs students** in grades TK–5. Designed to address the diverse instructional needs of native speakers and students learning to read in Spanish. Imagine Español teaches foundational literacy skills in an engaging, game-like environment that celebrates the cultures of the Spanish-speaking world.

If you have trouble accessing these resources, please contact us at (707) 544-8164.

We are very fortunate to have so many resources within the Bellevue community and we also recommend contacting your local library at <https://sonomalibrary.org/> or the Santa Rosa Recreation Department for activities at <https://www.srcity.org/676/Activities-Classes> to help supplement summer enrichment opportunities.

---

**Food Services:** Lynn Wong, Manager ([lwong@busd.org](mailto:lwong@busd.org))

**Free Breakfast and Lunch meals for the Summer School Programs!**

The food service program will be operating the summer meals program this year, and feeding the enrolled students with healthy, nutritious meals. As in years past, it will be provided by Revolution Foods. We hope to be able to cook on-site for future summer programs! Check out the [menus](#) for breakfast and lunch.

## Summer Meals

Save your family time and money with free meals for your kids this summer! No application or registration needed, just stop by and enjoy. To find meal sites near you, text FOOD or COMIDA to 304-304.



## Sonoma County Regional Parks Annual Pass for Only \$5/year



The Sonoma County Regional Parks is offering entrance to their parks for only \$5/year (regularly \$69/year) to any of their [55 regional parks](#) for families who qualify for [free meal eligibility](#).

Please contact the Food Service Program with name of student(s), school(s) attending, address, email, and phone number, if you are interested in applying for this

discounted entry pass, [cafeteria@busd.org](mailto:cafeteria@busd.org). A verification letter will be provided to take to the Sonoma County Regional Parks office to purchase your annual pass. The pass is good for 12-months from the date of purchase. With summer break coming up, this is a great opportunity to get out and enjoy nature!



Human Resources: Stacy Spector, Director ([hr@busd.org](mailto:hr@busd.org) 916-996-3493)

## Hiring for Classified positions. These include:

- Instructional Assistant (General Education Support)
- Instructional Assistant Newcomer (Bilingual Support)
- Instructional Assistant Special Day Class (Special Education Support)
- Student Supervision
- Substitute Instructional Assistants
- Substitute Student Supervision
- Substitute Custodians
- Substitute Cooks, Dishwashers and Kitchen Operators

## Competitive Salary and Compensation:



- Salaries start between \$16.70 and \$17.84.
- Hours range from ½ hour to 6 hours
- Generous medical, dental and vision benefits
- Support for continuing education
- Flexible hours
- Paid holidays
- Accrued vacation hours

**All jobs at Bellevue Union School District**

<http://www.edjoin.org/BellevueUnion>

**Classified jobs at Bellevue Union School District**

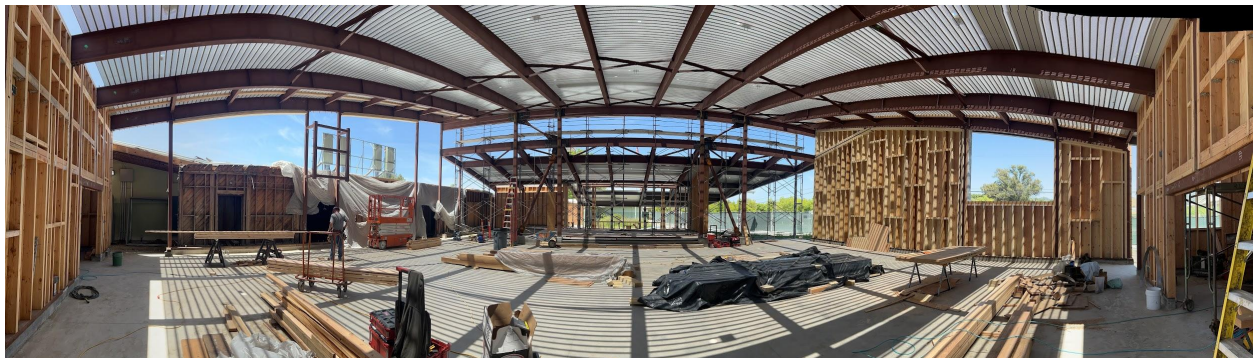
<http://www.edjoin.org/Home/Jobs?countyID=0&districtID=912&catID=3>

---

**Maintenance & Operations:** Bill Jereb, Director ([maintenance@busd.org](mailto:maintenance@busd.org))

**Kawana Springs Elementary Office & Multi-Purpose Roome MPR Construction Update.**

- Ridgeview Builders and their subcontractors have been steadily moving along with construction behind the green fence at Kawana Springs. The contractor expects to be finished and ready for furnishings by the end of this year, December 2023.
- [Kawana Springs Office & MPR Update Pics](#)







### ***Bellevue Elementary***

- The District obtained DSA approval for installation of (2) new 8' x 16' Ball Walls. We will work to schedule the installation during the busy summer school schedule.

### ***Meadow View Elementary***

- The discing of the high weeds in our fields on the corner of Hearn & Dutton Meadow will begin the week of June 5th to establish a defensible space for fires.

### ***Early Learning Center ELC***

- The District is working with vendors to obtain quotes for fencing and gates that will span the front of the ELC.

The District continues to work with our landscape designer, GSM Landscape Architects, to develop plans for our reimagined play areas and grounds.

Additional essential projects are progressing nicely throughout our District.

Please send any questions or maintenance requests you may have about our facilities to [mohelp@busd.org](mailto:mohelp@busd.org). Thank you!

**Student Services:** Tracy Whitaker ([studentservices@busd.org](mailto:studentservices@busd.org))

This year BUSD successfully launched a new social emotional learning curriculum. The Student Services Committee continued to monitor and review data. Students and families benefited from the instruction and resources. We look forward to continuing the implementation process. Thank you to the teachers for their implementation efforts and to the school counselors for their continued support of CharacterStrong.

On another note, I would like to thank our special education staff and contractors: special education teachers, school psychologists, speech therapists, occupational therapists, physical therapists, ERMHS counselors, behaviorists, special education instructional assistants, and the department support staff. They work together to ensure IEP services are provided and our students continue to progress on their goals. Thank you for your ongoing support and dedication!

---

**Technology:** Ryan Green, Director ([it@busd.org](mailto:it@busd.org))

We are excited to announce that we will soon be transitioning to Google for authentication and Single Sign-On (SSO) capabilities. This move will streamline the login process for staff, providing a more convenient and efficient experience. With Single Sign-On, you will only need to remember one set of login credentials to access various school platforms and applications including Aeries. This not only saves time and effort but also enhances security by reducing the risk of password-related vulnerabilities. We are confident that this change will greatly improve user experience and further strengthen our district's digital infrastructure.

In this rapidly evolving digital landscape, it is essential for us to stay informed about emerging technologies. One such technology is Artificial Intelligence (AI), which has the potential to revolutionize various aspects of education. AI refers to computer systems that can perform tasks that would typically require human intelligence, such as problem-solving, language understanding, and data analysis. One such solution, ChatGPT, is designed to provide helpful and accurate responses to queries, allowing us to leverage its vast knowledge base. To learn more about AI and ChatGPT, we encourage you to visit <https://www.commonsensemedia.org/articles/guide-to-chatgpt-for-parents-and-caregivers>.

We appreciate your continued support as we embrace these technological advancements to foster an innovative and engaging learning environment. Should you have any questions or concerns regarding the transition to Google for authentication or want to explore the potential of AI further, please don't hesitate to reach out to us. Together, we can prepare our students for the opportunities and challenges of the future.

As always, please send any questions or technology requests to [ithelp@busd.org](mailto:ithelp@busd.org).

---

General Information About the District: Moriah Hart, Executive Assistant ([mhart@busd.org](mailto:mhart@busd.org))

#### COMING OVER THE SUMMER:



**Website Relaunch:** To further enhance communication with our community BUSD will be working hard over the next couple of months to launch new websites for our schools and the district. Expect to see our new site in July. We thank you for your patience as we polish everything up for you!

#### COMING IN THE FALL:



**Visual and Performing Arts:** At Bellevue Union School District we are committed to arts education for our students. In the fall we are planning for singing, songwriting and marimba instruction for our students during the school day, as well as other music opportunities after school. We believe in arts education and know that students who participate in the arts at school stay in school, do better in school and have fun!

## Registration is now open



## El registro ya está abierto

Online registration ([link](#)) is open for all grades for the fall. Paper applications are also available at all school offices.

---

Our newsletters are always available on our [website](#), on Facebook: [www.facebook.com/busd.org](http://www.facebook.com/busd.org) and via our mobile phone app available here: [www.busd.org/app](http://www.busd.org/app)

With pride,

**Michael Kellison**

Superintendent

BELLEVUE UNION SCHOOL DISTRICT

3150 Education Drive / Santa Rosa, CA 95407

(707) 542-5197 / Fax: (707) 542-6127

<http://www.busd.org>

[www.facebook.com/busd.org](http://www.facebook.com/busd.org)