

Fortenberry Theatre/McRae Stage

SEATS

- Total Seats: 1,012
 - Main Orchestra Seating: 804
 - Parterre Seating: 198
 - Wheelchair positions: 10

STAGE DIMENSIONS

- Proscenium width: 50'-0"
- Proscenium height: 25'-0"
- Depth (Stage Edge to Plaster Line): 15'-7"
- Depth (Plaster Line to upstage wall): 30'-4"
- Stage Right to Stage Left extents: 90'-9"
- Stage Height above audience level: 42"
- Access door dimensions: 14'-8'

THEATRE AMENITIES

- Dressing Rooms (2)
- Restrooms (2)
- Audio In House Mix Location: at cross aisle in house
- Control Booth: Lighting
- Catwalks
 - (2) over house: lighting catwalks
 - (3) over stage: lighting catwalks
- Orchestra Pit
 - Removable Decks
 - Access through the house
 - Fixed pit net
- Upstage wall: fixed white projection surface
- Portable stage decks (risers) and pit cover certified to support a uniformly distributed live-load capacity of 4000

pounds per 4' x 8' section (125 pounds per square foot)

RIGGING

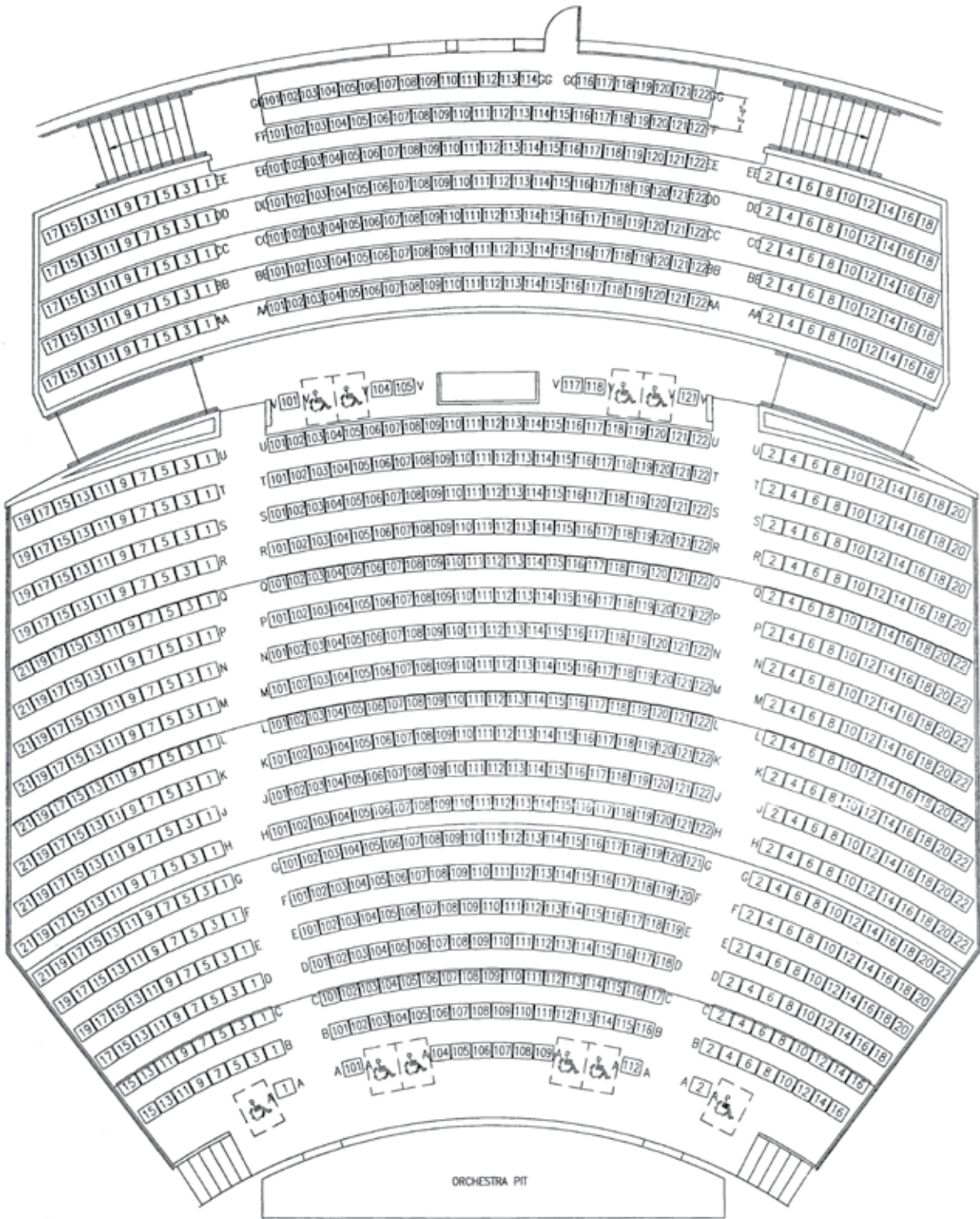
- (6) Motorized line sets
 - ETC Prodigy Fixed Speed P1300 Hoists
 - 66'-0" Batten length
 - 33'-8" travel
 - General Purpose
 - 1300 lbs uniform load
 - 420 lbs per lift line max
 - Foundation Controller, mounted Stage Right with pendant
- Curtains
 - Main Curtain (draw) & Valance on track
 - (2) Border Curtains on tracks
 - (3) Travelers / legs on tracks, draw type (stage left)
 - Side Tab curtains on tracks (travel US/DS)
- Catwalk tracks (mounted below catwalks)
 - (3) per catwalk, total of (9)

LIGHTING EQUIPMENT

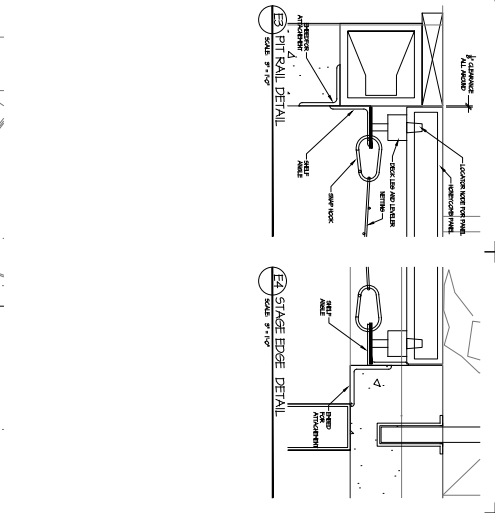
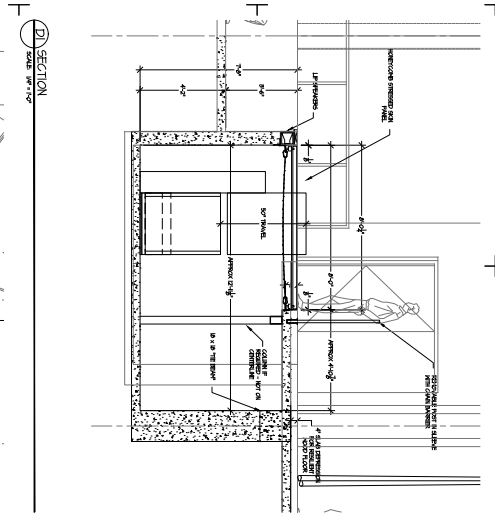
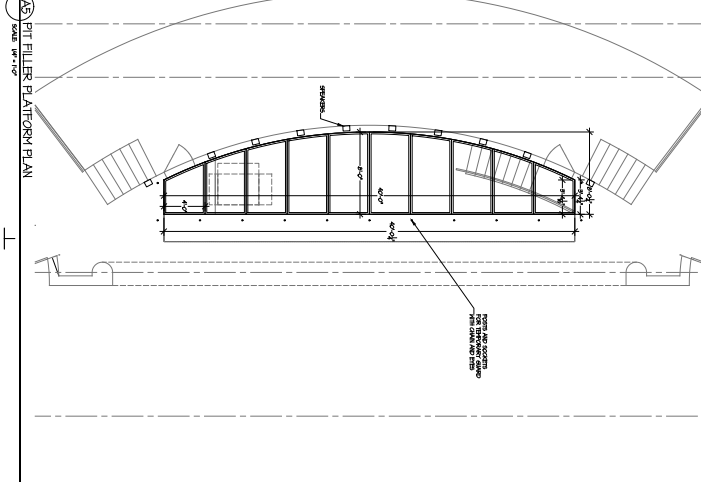
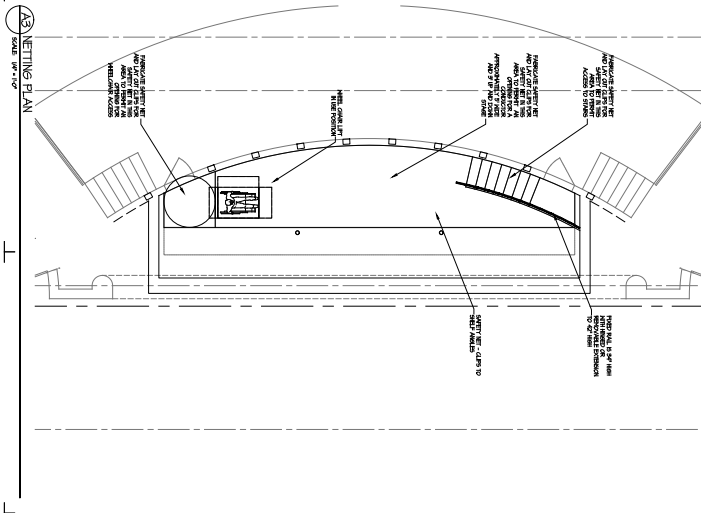
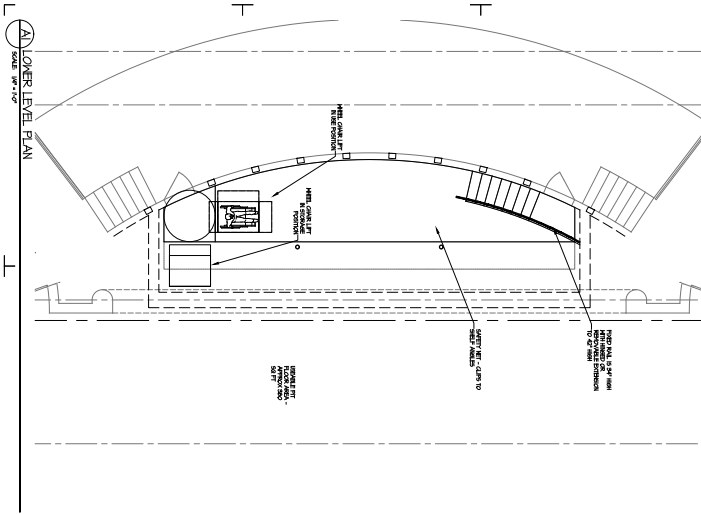
- Hybrid lighting system
 - (2) 48-circuit relay panels (Philips Strand Contact): Distributed circuits
 - (1) 12-way A21 Dimming Panel (fixed utility loads)
 - (1) 400A Company Switch (Stage Left) CAM-Lok compatible
- Architectural Lighting
 - LED down lighting, individually addressable

- Vision.NET control system with entry stations and LCD station at control booth and Stage Manager's Panel
- All utility and work lighting in the facility controlled by this system
- Snapshot from lighting control console into LCD presets
- Lighting Control Network
 - ETC Ion 1500 Channel with 2x20 Fader Wing, (2) displays, Net3 RFR, WAP for iPhone/iPad connection
 - (5) ETCNet3 Two-Port portable DMX Gateways
 - (1) Pathway Connectivity 4-Port Gateway (at console)
- Lighting Inventory
 - (24) ETC Source 4, 19°, HPL575X
 - (10) ETC Source 4, 26°, HPL575X
 - (10) ETC Source 4, 36°, HPL575X
 - (2) ETC Source 4, 15-30° Zoon, HPL575X
 - (26) Philips Selecon PL-4 Profile LED (4-color) (configured 16-bit)
 - (34) Philips Selecon PL-FRESNEL LED (4-color) (configured 16-bit)
 - (18) Philips Selecon PL-CYC LED (4-color) (configured 16-bit)
 - (60) Philips Strand LightPack 750W DMX Dimmer (for quartz lights)
 - (2) Robert Juliat Topaze Followspot 1200MSR
 - (6) Altman Q-Lite work light

Fortenberry Theatre



McRae Stage



GENERAL NOTES

1. REFER TO THE GENERAL NOTES FOR THE McRAE STAGE FOR THE GENERAL NOTES AND SPECIFICATIONS.
2. REFER TO THE GENERAL NOTES FOR THE McRAE STAGE FOR THE GENERAL NOTES AND SPECIFICATIONS.
3. REFER TO THE GENERAL NOTES FOR THE McRAE STAGE FOR THE GENERAL NOTES AND SPECIFICATIONS.
4. REFER TO THE GENERAL NOTES FOR THE McRAE STAGE FOR THE GENERAL NOTES AND SPECIFICATIONS.
5. REFER TO THE GENERAL NOTES FOR THE McRAE STAGE FOR THE GENERAL NOTES AND SPECIFICATIONS.
6. REFER TO THE GENERAL NOTES FOR THE McRAE STAGE FOR THE GENERAL NOTES AND SPECIFICATIONS.
7. REFER TO THE GENERAL NOTES FOR THE McRAE STAGE FOR THE GENERAL NOTES AND SPECIFICATIONS.
8. REFER TO THE GENERAL NOTES FOR THE McRAE STAGE FOR THE GENERAL NOTES AND SPECIFICATIONS.
9. REFER TO THE GENERAL NOTES FOR THE McRAE STAGE FOR THE GENERAL NOTES AND SPECIFICATIONS.
10. REFER TO THE GENERAL NOTES FOR THE McRAE STAGE FOR THE GENERAL NOTES AND SPECIFICATIONS.
11. REFER TO THE GENERAL NOTES FOR THE McRAE STAGE FOR THE GENERAL NOTES AND SPECIFICATIONS.
12. REFER TO THE GENERAL NOTES FOR THE McRAE STAGE FOR THE GENERAL NOTES AND SPECIFICATIONS.



BCA

 BUILDING CONSTRUCTION ASSOCIATION OF ALABAMA

 1010 NORTH AVENUE, SUITE 1000, OXFORD, ALABAMA 35203

 TEL: 205.261.1000 FAX: 205.261.1001

 WWW.BCA-ALABAMA.ORG