



Architect:
STR PARTNERS LLC
Chicago, Illinois

ADDENDUM NO. 1

March 17, 2022

STR Project Number 21051.01

Project:
D116 RLHS Theater AV Improvements
Round Lake High School
Round Lake High School Drive
Round Lake, Illinois 60073

Owner:
**Round Lake Area Schools Community
Unit District 116**
884 W. Nippersink Rd.
Round Lake, Illinois 60073



STR PARTNERS LLC
350 West Ontario Street
Suite 200
Chicago IL 60654
312.464.1444
www.strpartners.com

ADDENDUM NO. 01

PROJECT: **D116 RLHS Theater AV Improvements
Round Lake Area Schools Community Unit District 116**

PROJECT NO: 21051.01

ISSUE DATE: March 17, 2022

Construction Drawings, Specifications and Bidding Documents for the above captioned Project, dated March 3, 2022, are revised, amended and clarified as follows. All provisions of the original Drawings and Specifications shall remain in force, except as specifically modified or changed herein, or by other Addenda.

A. CLARIFICATIONS:

1. **General:** Please find attached the Sign-In sheet from the Pre-Bid conference held on Wednesday, March 9, 2022 at 10:00am.

D. AV DRAWINGS:

1. **Sheet AV-01, AV DEMOLITION PLAN**
 - a. **CLARIFY** - Added note.
2. **Sheet AV-02, AV LAYOUT- AUDITORIUM MAIN LEVEL**
 - a. **CLARIFY** - Added note.
3. **Sheet AV-03, AV LAYOUT- AUDITORIUM MEZZANINE LEVEL**
 - a. **CLARIFY** - Added note.

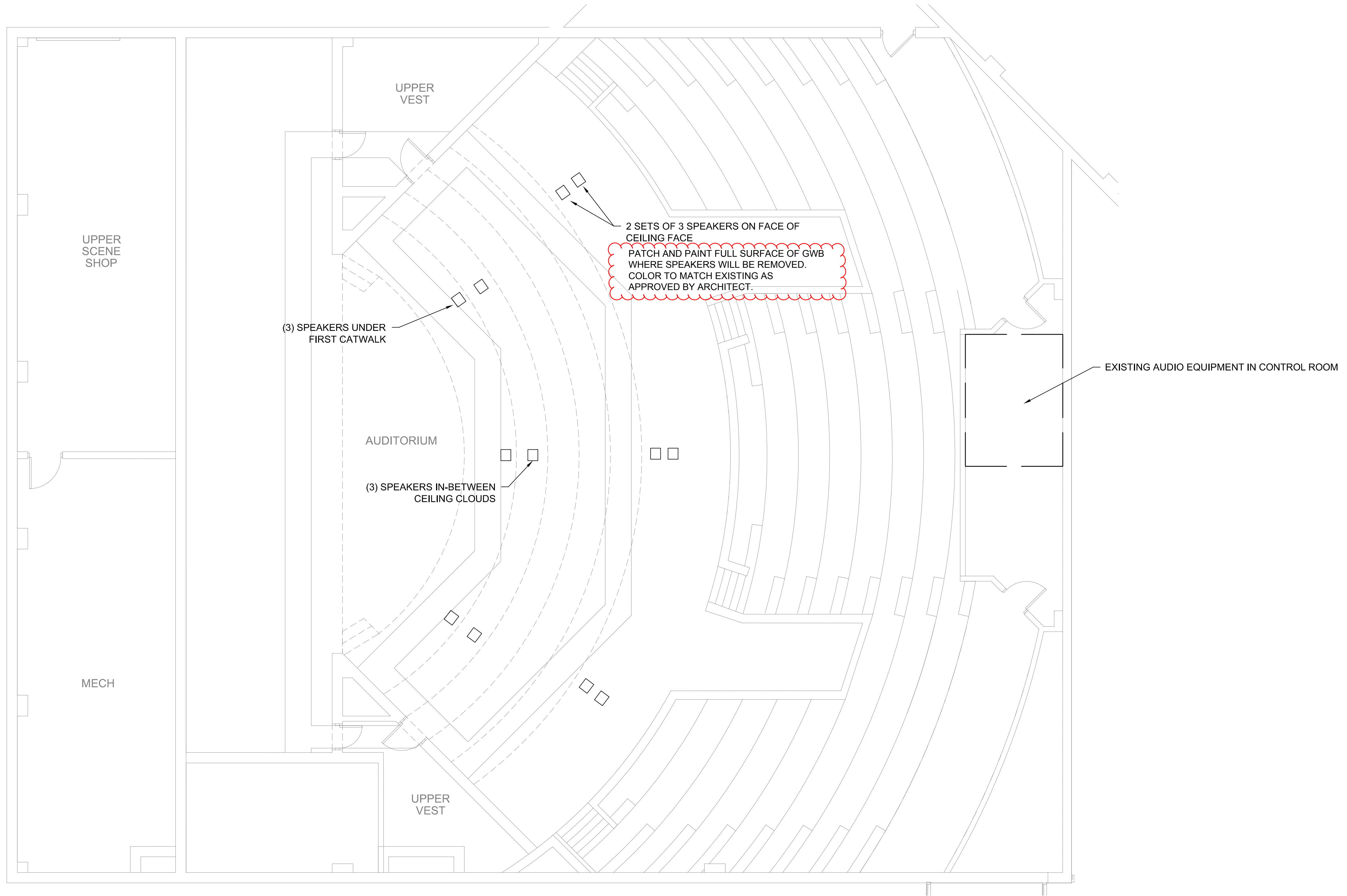
H. ELECTRICAL DRAWINGS:

1. **Sheet E1.0, LOWER LEVEL - ELECTRICAL PLAN**
 - a. **CLARIFY** - Revised and added notes.
2. **Sheet E1.1, UPPER LEVEL - ELECTRICAL PLAN**
 - a. **CLARIFY** - Revised and added notes.
3. **Sheet E1.2, UPPER LEVEL - ELECTRICAL PLAN**
 - a. **CLARIFY** - Revised and added notes.

END OF ADDENDUM #01



KEY PLAN



2 SETS OF 3 SPEAKERS ON FACE OF
 CEILING FACE
 PATCH AND PAINT FULL SURFACE OF GWB
 WHERE SPEAKERS WILL BE REMOVED.
 COLOR TO MATCH EXISTING AS
 APPROVED BY ARCHITECT.

1 DEMOLITION PLAN
 Scale: 3/16" = 1'-0"

- NOTES**
- 1 - REMOVE ALL EXISTING EQUIPMENT ON DEMOLITION PLAN AND TURN OVER TO OWNER
 - 2 - REMOVE RIGGING HARDWARE FROM SPEAKERS AS MUCH AS PRACTICAL OR REUSE FOR NEW SPEAKERS
 - 3 - REMOVE WIRE FEEDING EXISTING EQUIPMENT

NOTE:
 AT AREAS WHERE EQUIPMENT, RIGGING, AND WIRING HAS BEEN REMOVED, THE EXISTING FINISH SHALL BE PATCHED, REPAIRED AND REFINISHED TO MATCH EXISTING. CONFIRM WITH ARCHITECT FINISH.

SCOPE DOCUMENT
 This drawing is one drawing within a complete set of documents and shall not be considered separately from the Drawings as a whole. The Drawings indicate the general scope of the project in terms of architectural design concept, the dimensions of the building, the major architectural elements and the type of structural, mechanical, and electrical systems. As Scope Documents, the Drawings do not necessarily indicate or describe all work required for full performance and completion of the requirements of the Construction Documents. On the basis of the general scope indicated or described, the Contractor shall furnish all items required for the proper execution and completion of the Work.

Copyright Notice. Copyright © 2021 STR PARTNERS, LLC. The Information in this document is the intellectual property of STR Partners, LLC. It is intended solely for use by the "Client" during only this specific project. Reproduction of any portion of this document for any purpose other than for its intended use is not permitted without specific written permission of STR Partners, LLC.

PROJECT
D116 RLHS THEATER AV SYSTEM RENOVATION
ROUND LAKE HIGH SCHOOL
 800 High School Drive
 Round Lake, IL 60073

Round Lake Area Schools
Community Unit District 116
 884 Nippersink Rd.
 Round Lake, IL 60073

CLIENT PROJECT NUMBER

STR PROJECT NUMBER
21051.01

DRAWING DATES

NUMBER	DATE	COMMENTS
. 02	03/17/2022	ADDENDUM NO. 1
. 3-3-2022		ISSUED FOR BID

DRAWING TITLE
AV DEMOLITION PLAN

Actual size to read at scale
 0 IN 1 IN 2 IN



KEY PLAN

SCOPE DOCUMENT

This drawing is one drawing within a complete set of documents and shall not be considered separately from the Drawings as a whole. The Drawings indicate the general scope of the project in terms of architectural design concept, the dimensions of the building, the major architectural elements and the type of structural, mechanical, and electrical systems. As Scope Documents, the Drawings do not necessarily indicate or describe all work required for full performance and completion of the requirements of the Construction Documents. On the basis of the general scope indicated or described, the Contractor shall furnish all items required for the proper execution and completion of the Work.

Copyright Notice, Copyright © 2021 STR PARTNERS, LLC. The information in this document is the intellectual property of STR Partners, LLC. It is intended solely for use by the "Client" during only this specific project. Reproduction of any portion of this document for any purpose other than for its intended use is not permitted without specific written permission of STR Partners, LLC.

PROJECT
D116 RLHS THEATER AV SYSTEM RENOVATION
ROUND LAKE HIGH SCHOOL
 800 High School Drive
 Round Lake, IL 60073

Round Lake Area Schools
Community Unit District 116
 884 Nippersink Rd.
 Round Lake, IL 60073

CLIENT PROJECT NUMBER

STR PROJECT NUMBER
21051.01

DRAWING DATES

NUMBER	DATE	COMMENTS
02	03/17/2022	ADDENDUM NO. 1
3-3	2022	ISSUED FOR BID

DRAWING TITLE
AV LAYOUT - AUDITORIUM MAIN LEVEL

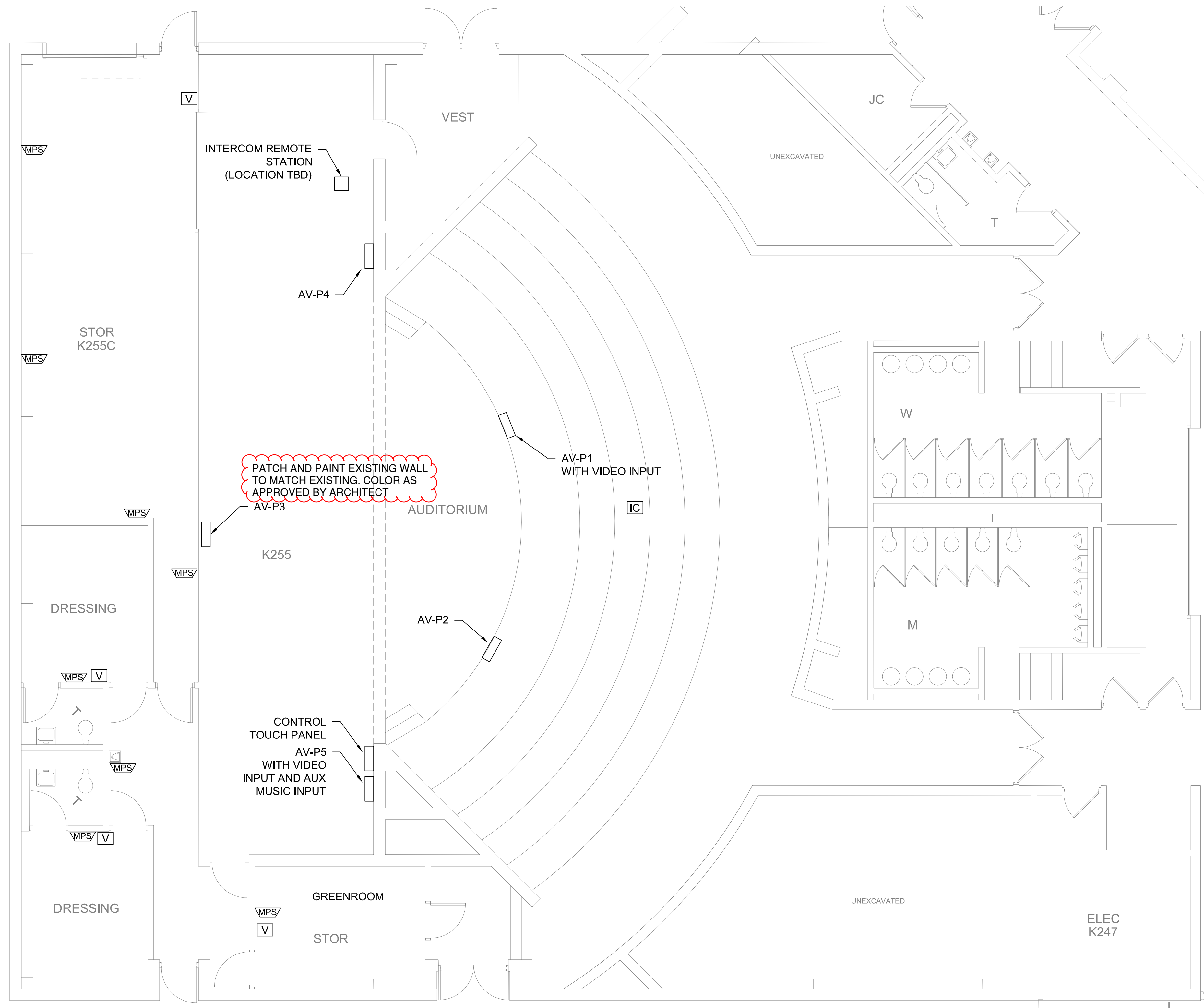
SHEET NUMBER

AV-02

AV Wall Plate Schedule

Plate	Location	Mic (XLR-F)	Efx. Spkr. (Speaker)	I-Com (XLR-M)	I-Com & Page Out (XLR-F)	Video (Decora)	Aux Audio (Decora)	AV Network/Video Mon (RJ45)	Plate Size	Adjacent AC Outlet	Adjacent Data Outlet
AV-P1	Stage Front - SL	1	1	2	-	1	-	1	(2) 3 - Gang, Deep	1	1
AV-P2	Stage Front - SR	2	1	-	-	-	-	-	3 - Gang	1	-
AV-P3	Upstage Center	3	1	2	-	-	-	1	Wall Box w/ Cover	-	-
AV-P4	Down Stage Left	2	1	2	3	-	-	2	(2) 3 - Gang	1	-
AV-P5	Down Stage Right	2	1	2	-	1	1	1	(2) 4 - Gang, Deep	1	1
AV-P6	House Mix Position	-	-	2	-	1	-	3	4 - Gang, Deep	2	1
AV-P7	Lobby Theatre Entry	2	-	-	-	-	1	-	2 - Gang	1	-
AV-P8	Lobby East Side	2	-	-	-	-	-	-	1 - Gang	-	-
AV-P9	2nd House Catwalk	-	1	-	-	-	-	-	1 - Gang	-	-
AV-P10	1st House Catwalk	1	-	-	-	-	-	-	1 - Gang	-	-
AV-P11	2nd House Catwalk	2	-	-	-	-	-	-	1 - Gang	-	-
AV-P12	Control Room	-	-	-	3	-	-	2	3 - Gang	1	-

NOTE:
 WHERE EQUIPMENT, CONTROLS, AND WIRING ARE INSTALLED THE ADJACENT FINISH SHALL BE REPAIRED, PATCHED AND FINISHED TO MATCH EXISTING.



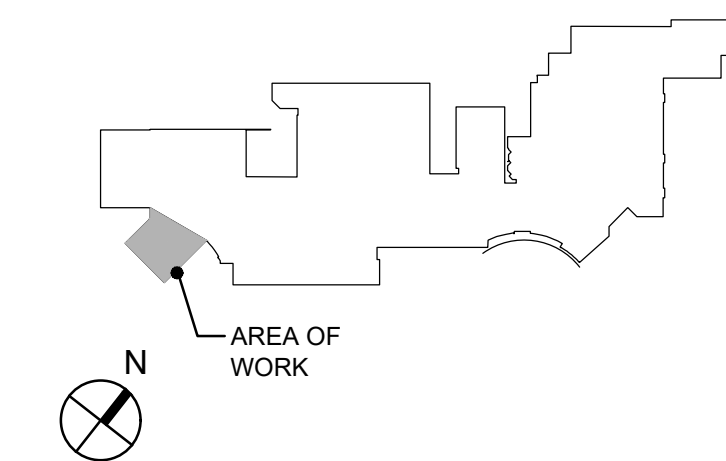
MPS/ MONITOR/PAGE SPEAKER
 V VOLUME CONTROL
 IC INTERCOM WALL PLATE
 AV-Px AV WALL PLATE

1 LOWER LEVEL FLOOR PLAN
 Scale: 3/16" = 1'-0"



Actual size to read at scale
 0 IN 1 IN 2 IN

KEY PLAN



SCOPE DOCUMENTS

This drawing is one drawing within a complete set of documents and shall not be considered separately from the Drawings as a whole. The Drawings indicate the general scope of the project in terms of architectural design concept, the dimensions of the building, the major architectural elements and the type of structural, mechanical, and electrical systems. As Scope Documents, the Drawings do not necessarily indicate or describe all work required for full performance and completion of the requirements of the Construction Documents. On the basis of the general scope indicated or described, the Contractor shall furnish all items required for the proper execution and completion of the Work.

© 2022 STR PARTNERS, LLC

PROJECT

D116 RLHS THEATER AV SYSTEM RENOVATION
 ROUND LAKE HIGH SCHOOL
 800 High School Drive
 Round Lake, IL 60073

ROUND LAKE COMMUNITY UNIT SCHOOL DISTRICT 116
 884 W Nippersink Road
 Round Lake, IL 60073

CLIENT PROJECT NUMBER

886-B-2

STR PROJECT NUMBER

21051.01

DRAWING DATES

NUMBER DATE COMMENTS

NUMBER	DATE	COMMENTS
02	03/17/2022	ADDENDUM 1
01	03/03/2022	ISSUED FOR BID

DRAWING TITLE

LOWER LEVEL - ELECTRICAL PLAN

SHEET NUMBER

E1.0

ROUTING AND SEPARATION NOTE:

AV SYSTEM RACEWAYS SHOULD NOT BE INDISCRIMINATELY ROUTED THROUGHOUT A FACILITY. AV CIRCUITS ARE SUSCEPTIBLE TO ELECTRICAL NOISE AND REQUIRE SPECIFIC SEPARATION TO MINIMIZE THESE INTERFERENCES. SEPARATE INNERDUCT BY AT LEAST TWELVE INCHES FOR VARIOUS AV SIGNAL LEVELS INCLUDING MIC / LINE LEVEL, SPEAKER LEVEL, AND AC POWER. REFER TO AV-SERIES DRAWINGS.

CIRCUITING NOTE:

THE ELECTRICAL CONTRACTOR SHALL VERIFY ALL AS REQUIRED FOR THIS PROJECT'S WORK. PROVIDE NEW CIRCUITS / CIRCUIT BREAKERS (MATCH EXISTING TYPE) WHERE REQUIRED - VERIFY SPACES AND SPACES IN RESPECTIVE EXISTING ELECTRICAL PANEL AND CIRCUIT ACCORDINGLY. VERIFY PANEL LOADING PRIOR TO ALL FINAL CONNECTIONS.

AUDIO-VISUAL SYSTEMS COORDINATION NOTE:

REFER TO AV-SERIES DRAWINGS FOR EXACT REQUIREMENTS. THIS CONTRACTOR SHALL BE RESPONSIBLE TO CONFIRM EXACT CONDUIT / RACEWAY QUANTITIES AND SIZES, BACKBOX SIZES, LOCATIONS, ETC... CLOSELY COORDINATE WITH AUDIO-VISUAL CONSULTANT AS REQUIRED. PROVIDE AND ADJUST ALL AS REQUIRED FOR COMPLETE AND FULLY FUNCTIONAL INSTALLATION.

LEGEND:

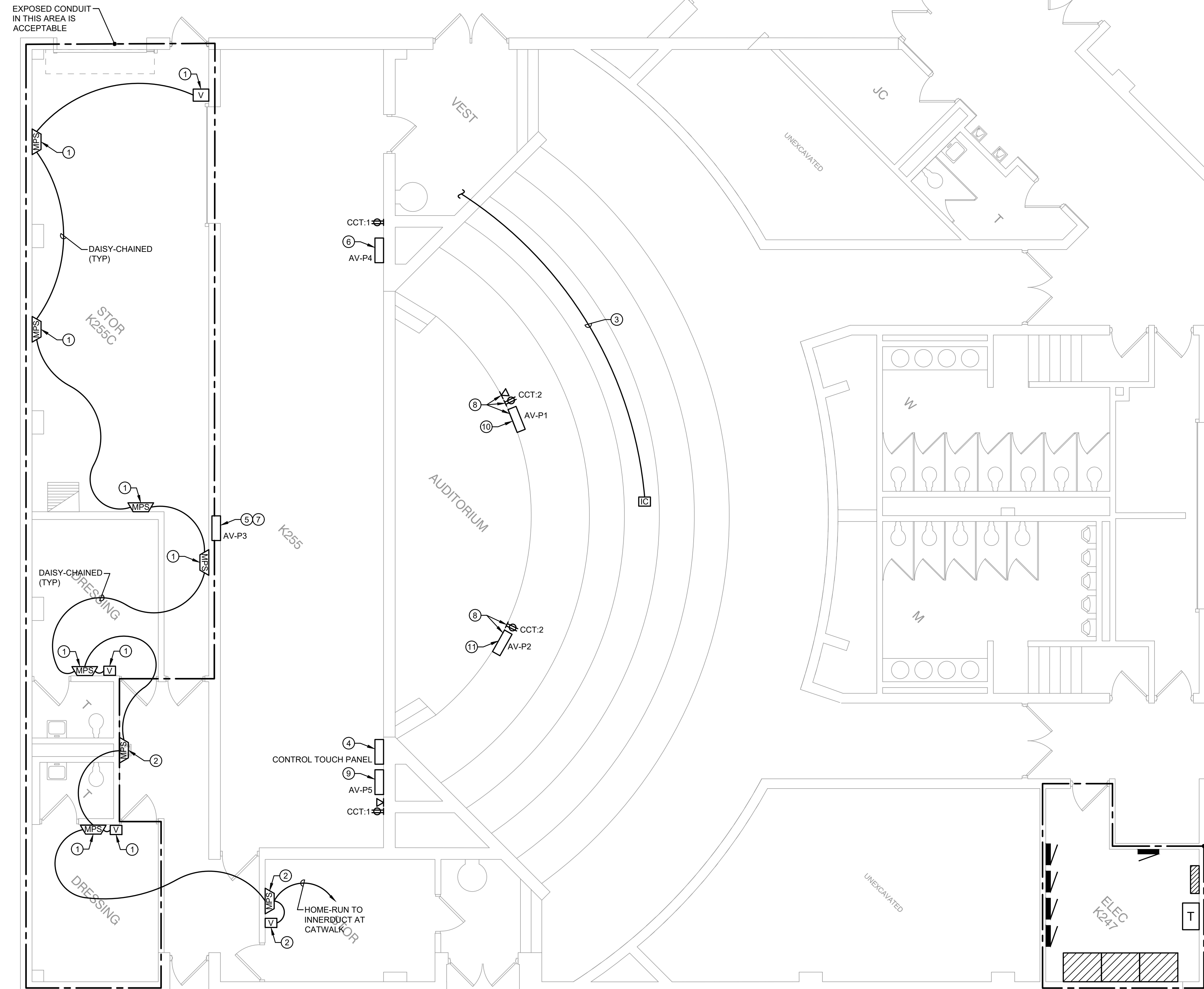
- ⊕ DUPLEX RECEPTACLE
- ⊙ JUNCTION BOX
- MPS MONITOR / PAGE SPEAKER
- V VOLUME CONTROL
- IC INTERCOM WALL PLATE
- AV-P# AV WALL PLATE
- CONDUIT W/ OR W/O CONDUCTORS

DRAWING NOTES:

- ONE 1-GANG DEEP JUNCTION BOX WITH ONE 3/4" CONDUIT FOR LOW-VOLTAGE.
- ONE 1-GANG DEEP JUNCTION BOX WITH ONE 1-COMPARTMENT VERTICAL RACEWAY (UP TO HIGH CEILING) Iegrand / WIREMOLD MODEL# V700-SERIES FOR LOW-VOLTAGE.
- ONE 1-GANG SURFACE MOUNTED TYPE JUNCTION BOX WITH ONE 3/4" CONDUIT RACEWAY FOR LOW-VOLTAGE. ROUTE RACEWAY BEHIND SEATS AND ACROSS TWO WALKWAYS TO VESTIBULE, THEN UP TO HIGH CEILING. EXPOSED PORTION CONDUIT TO BE PAINTED TO MATCH ADJACENT SURFACE. COLOR APPROVED BY ARCHITECT.
- CUSTOM SURFACE MOUNTED TYPE JUNCTION BOX SIZED FOR 10" CONTROL SYSTEM TOUCH PANEL. CONFIRM EXACT SIZE WITH AV CONTRACTOR. PAINT BLACK. MOUNT AT 58" A.F.F.. PROVIDE ONE 3/4" CONDUIT FOR LOW-VOLTAGE TO LOW-VOLTAGE SECTION OF ADJACENT VERTICAL RACEWAY.
- FSR WALL BOX (WITH HINGED COVER) FURNISHED BY AV CONTRACTOR BUT INSTALLED BY THIS CONTRACTOR.
- TWO 3-GANG SURFACE MOUNTED TYPE JUNCTION BOXES WITH ADJACENT AC BOX. WITH ONE 3-COMPARTMENT VERTICAL RACEWAY (UP TO HIGH CEILING) Iegrand / WIREMOLD MODEL# 5500-SERIES FOR LOW-VOLTAGE AND POWER. COMPARTMENT 1: LOW-VOLTAGE COMPARTMENT 2: LOW-VOLTAGE COMPARTMENT 3: POWER
- FLUSH-MOUNT TYPE JUNCTION BOXES IN BLOCK WALL. ROUTE CONDUIT TO EXIT INTO STOR K255C HALLWAY, THEN UP TO HIGH CEILING.
- FLUSH-MOUNT TYPE JUNCTION BOXES IN STAGE FRONT. ROUTE CONDUITS UNDER STAGE FLOOR; CLOSELY COORDINATE INSTALLATION WITH OWNER.
- TWO 4-GANG SURFACE MOUNTED TYPE JUNCTION BOXES WITH ADJACENT AC AND DATA BOXES. WITH ONE 3-COMPARTMENT VERTICAL RACEWAY (UP TO HIGH CEILING) Iegrand / WIREMOLD MODEL# 5500-SERIES FOR LOW-VOLTAGE AND POWER. COMPARTMENT 1: LOW-VOLTAGE COMPARTMENT 2: LOW-VOLTAGE COMPARTMENT 3: POWER
- TWO 3-GANG DEEP JUNCTION BOXES WITH ADJACENT AC AND DATA BOXES.
- TWO 3-GANG DEEP JUNCTION BOXES WITH ADJACENT AC BOX.

GENERAL NOTES:

- THE MINIMUM WIRE SIZE SHALL BE #12 AWG. PROVIDE DEDICATED NEUTRALS; NO COMMON NEUTRALS ARE PERMITTED.
- THE MINIMUM CONDUIT SIZE FOR HOMERUNS AND BRANCH FEEDS SHALL BE 3/4". 1/2" CONDUIT SHALL BE ACCEPTABLE FOR BRANCH WIRING FOR SINGLE CIRCUITS ONLY. ALL BRANCH CIRCUITS SHALL TERMINATE AT 20A-1P CIRCUIT BREAKERS IN PANELBOARD INDICATED UNLESS SPECIFICALLY INDICATED OTHERWISE.
- THE CONTRACTOR SHALL UPSIZE CONDUCTORS AND CONDUITS (OVER 75'-0" IN LENGTH) TO COMPENSATE FOR VOLTAGE DROP.
- THE CONTRACTOR SHALL PROVIDE ALL PENETRATIONS, SLEEVES AND SEALANT AS REQUIRED THRU PARTITIONS TO ACCOMMODATE ANY CONDUITS / RACEWAYS, CABLING, ETC... ALL PENETRATIONS THRU RATED WALL ASSEMBLY(IES) MUST MEET THE UL RATING OF THE WALL SYSTEM(S).
- REFER TO AV PLANS FOR ADDITIONAL INFORMATION REGARDING MOUNTING HEIGHTS AND EXACT LOCATIONS OF ALL ELECTRICAL DEVICES BEFORE ROUGH-IN.
- THE CONTRACTOR SHALL VERIFY EXACT EQUIPMENT LOCATIONS, LOAD INFORMATION, VOLTAGE, AMPERAGE, CONNECTION TYPE, ETC... WITH EQUIPMENT BEING SUPPLIED PRIOR TO ROUGH-IN.
- ALL WALL-MOUNTED ELECTRICAL DEVICES (RECEPTACLES, OUTLETS, LIGHT SWITCHES, ETC...) TO HAVE COLOR SELECTED BY ARCHITECT WITH STAINLESS STEEL FACEPLATE(S).
- ALL EQUIPMENT / ITEMS INDICATED ON PLANS ARE NEW UNLESS SPECIFICALLY INDICATED OTHERWISE.



ALL EXPOSED CONDUITS IN THEATER AREA (WITH BLACK WALLS) SHALL BE PAINTED BLACK. ALL EXPOSED CONDUITS IN THEATER AND STAGE AREA SHALL BE COLOR AS APPROVED BY ARCHITECT.

WHERE EQUIPMENT, CONTROLS, AND WIRING ARE INSTALLED THE ADJACENT FINISH SHALL BE PATCHED, REPAIRED AND FINISHED TO MATCH EXISTING.

CONTRACTOR SHALL HOMERUN NEW BRANCH CIRCUITS TO AVAILABLE PANEL SPACES WITHIN THIS ROOM. FIELD VERIFY AVAILABILITY PRIOR TO ROUGH-IN.

1 LOWER LEVEL - ELECTRICAL PLAN

SCALE: 3/16" = 1'-0"

ROUTING AND SEPARATION NOTE:

AV SYSTEM RACEWAYS SHOULD NOT BE INDISCRIMINATELY ROUTED THROUGHOUT A FACILITY. AV CIRCUITS ARE SUSCEPTIBLE TO ELECTRICAL NOISE AND REQUIRE SPECIFIC SEPARATION TO MINIMIZE THESE INTERFERENCES. SEPARATE INNERDUCT BY AT LEAST TWELVE INCHES FOR VARIOUS AV SIGNAL LEVELS INCLUDING MIC / LINE LEVEL, SPEAKER LEVEL, AND AC POWER. REFER TO AV-SERIES DRAWINGS.

CIRCUITING NOTE:

THE ELECTRICAL CONTRACTOR SHALL VERIFY ALL AS REQUIRED FOR THIS PROJECT'S WORK. PROVIDE NEW CIRCUITS / CIRCUIT BREAKERS (MATCH EXISTING TYPE) WHERE REQUIRED - VERIFY SPACES AND SPACES IN RESPECTIVE EXISTING ELECTRICAL PANEL AND CIRCUIT ACCORDINGLY. VERIFY PANEL LOADING PRIOR TO ALL FINAL CONNECTIONS.

AUDIO-VISUAL SYSTEMS COORDINATION NOTE:

REFER TO AV-SERIES DRAWINGS FOR EXACT REQUIREMENTS. THIS CONTRACTOR SHALL BE RESPONSIBLE TO CONFIRM EXACT CONDUIT / RACEWAY QUANTITIES AND SIZES, BACKBOX SIZES, LOCATIONS, ETC... CLOSELY COORDINATE WITH AUDIO-VISUAL CONSULTANT AS REQUIRED. PROVIDE AND ADJUST ALL AS REQUIRED FOR COMPLETE AND FULLY FUNCTIONAL INSTALLATION.

LEGEND:

- DUPLEX RECEPTACLE
- JUNCTION BOX
- MONITOR / PAGE SPEAKER
- VOLUME CONTROL
- INTERCOM WALL PLATE
- AV WALL PLATE
- CONDUIT W/ OR W/O CONDUCTORS

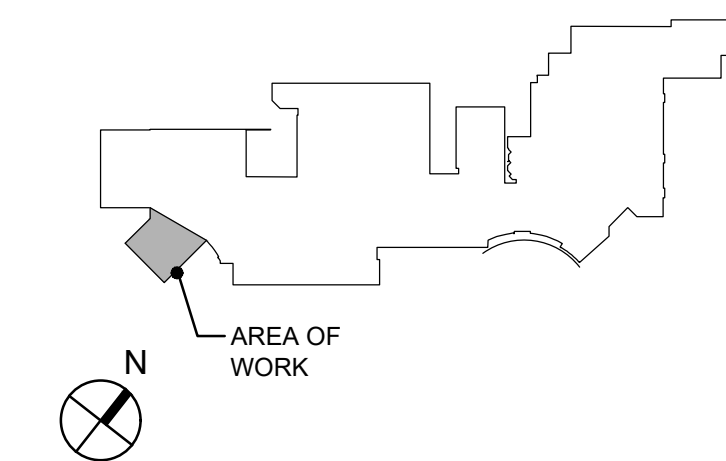
DRAWING NOTES:

1. ONE 1-GANG SURFACE MOUNTED TYPE JUNCTION BOX WITH ONE 3/4" CONDUIT FOR LOW VOLTAGE, UP TO HIGH CEILING, IN BAR JOIST.
2. ONE 3/4" CONDUIT STUB FOR LOW VOLTAGE INTO "DEAD SPACE", THEN UP TO CATWALK.
3. ONE 1-GANG DEEP JUNCTION BOX WITH ONE 3/4" CONDUIT STUB-UP FOR LOW-VOLTAGE AND ONE 1-GANG JUNCTION BOX WITH ONE 3/4" CONDUIT FOR POWER.
4. CONNECT TO NEAREST (NON-DEDICATED) LOCAL RECEPTACLE CIRCUIT WITH AVAILABLE SPARE CAPACITY - VERIFY. PROVIDE ANY CONDUIT, RACEWAYS, WIRING, ETC... AS REQUIRED.
5. ONE 4-GANG DEEP SURFACE MOUNTED TYPE JUNCTION BOX TO SIDE OF STEP WITH ADJACENT SURFACE MOUNTED TYPE JUNCTION BOXES FOR AC AND DATA.
6. EXACT ROUTING UNKNOWN AT TIME OF ISSUANCE; CLOSELY COORDINATE INSTALLATION WITH OWNER.
7. LARGE (SIZED ACCORDINGLY) JUNCTION BOX IN CEILING ABOVE RACK. PROVIDE SLEEVES (QUANTITIES AS REQUIRED) TO CATWALK AREA - SEE KEY NOTE #12.
8. UP TO HIGH CEILING, IN BAR JOIST.
9. MOUNT LOW ON SIDE OF CATWALK.
10. UTILIZE EXISTING SPEAKER CONDUIT AND ROUTE BACK TO AV EQUIPMENT RACK.
11. TWO 2" AND TWO 1" INNERDUCTS FROM HIGH CEILING ABOVE THE 1ST CATWALK TO THE 2ND CATWALK. BLACK IN COLOR.
12. TWO 2" AND THREE 1" INNERDUCTS FROM HIGH CEILING ABOVE THE 2ND CATWALK TO THE JUNCTION BOX ABOVE AV EQUIPMENT RACK. BLACK IN COLOR.
13. ONE 3-GANG JUNCTION BOX AT OUTLET HEIGHT WITH CONDUIT TO RACK.
14. AC OUTLET FOR SUBWOOFER. MOUNT HIGH, JUST BELOW CEILING. CONFIRM EXACT LOCATION WITH AV CONTRACTOR.

GENERAL NOTES:

1. THE MINIMUM WIRE SIZE SHALL BE #12 AWG. PROVIDE DEDICATED NEUTRALS; NO COMMON NEUTRALS ARE PERMITTED.
2. THE MINIMUM CONDUIT SIZE FOR HOMERUNS AND BRANCH FEEDS SHALL BE 3/4". 1/2" CONDUIT SHALL BE ACCEPTABLE FOR BRANCH WIRING FOR SINGLE CIRCUITS ONLY. ALL BRANCH CIRCUITS SHALL TERMINATE AT 20A-1P CIRCUIT BREAKERS IN PANELBOARD INDICATED UNLESS SPECIFICALLY INDICATED OTHERWISE.
3. THE CONTRACTOR SHALL UPSIZE CONDUCTORS AND CONDUITS (OVER 75'-0" IN LENGTH) TO COMPENSATE FOR VOLTAGE DROP.
4. THE CONTRACTOR SHALL PROVIDE ALL PENETRATIONS, SLEEVES AND SEALANT AS REQUIRED THRU PARTITIONS TO ACCOMMODATE ANY CONDUITS / RACEWAYS, CABLING, ETC... ALL PENETRATIONS THRU RATED WALL ASSEMBLY(IES) MUST MEET THE UL RATING OF THE WALL SYSTEM(S).
5. REFER TO AV PLANS FOR ADDITIONAL INFORMATION REGARDING MOUNTING HEIGHTS AND EXACT LOCATIONS OF ALL ELECTRICAL DEVICES BEFORE ROUGH-IN.
6. THE CONTRACTOR SHALL VERIFY EXACT EQUIPMENT LOCATIONS, LOAD INFORMATION, VOLTAGE, AMPERAGE, CONNECTION TYPE, ETC... WITH EQUIPMENT BEING SUPPLIED PRIOR TO ROUGH-IN.
7. ALL WALL-MOUNTED ELECTRICAL DEVICES (RECEPTACLES, OUTLETS, LIGHT SWITCHES, ETC...) TO HAVE COLOR SELECTED BY ARCHITECT WITH STAINLESS STEEL FACEPLATE(S).
8. ALL EQUIPMENT / ITEMS INDICATED ON PLANS ARE NEW UNLESS SPECIFICALLY INDICATED OTHERWISE.

KEY PLAN



SCOPE DOCUMENTS

This drawing is one drawing within a complete set of documents and shall not be considered separately from the Drawings as a whole. The Drawings indicate the general scope of the project in terms of architectural design concept, the dimensions of the building, the major architectural elements and the type of structural, mechanical, and electrical systems. As Scope Documents, the Drawings do not necessarily indicate or describe all work required for full performance and completion of the requirements of the Construction Documents. On the basis of the general scope indicated or described, the Contractor shall furnish all items required for the proper execution and completion of the Work.

© 2022 STR PARTNERS, LLC

PROJECT

D116 RLHS THEATER AV SYSTEM RENOVATION
ROUND LAKE HIGH SCHOOL
 800 High School Drive
 Round Lake, IL 60073

ROUND LAKE COMMUNITY UNIT SCHOOL DISTRICT 116
 884 W Nippersink Road
 Round Lake, IL 60073

CLIENT PROJECT NUMBER

886-B-2

STR PROJECT NUMBER

21051.01

DRAWING DATES

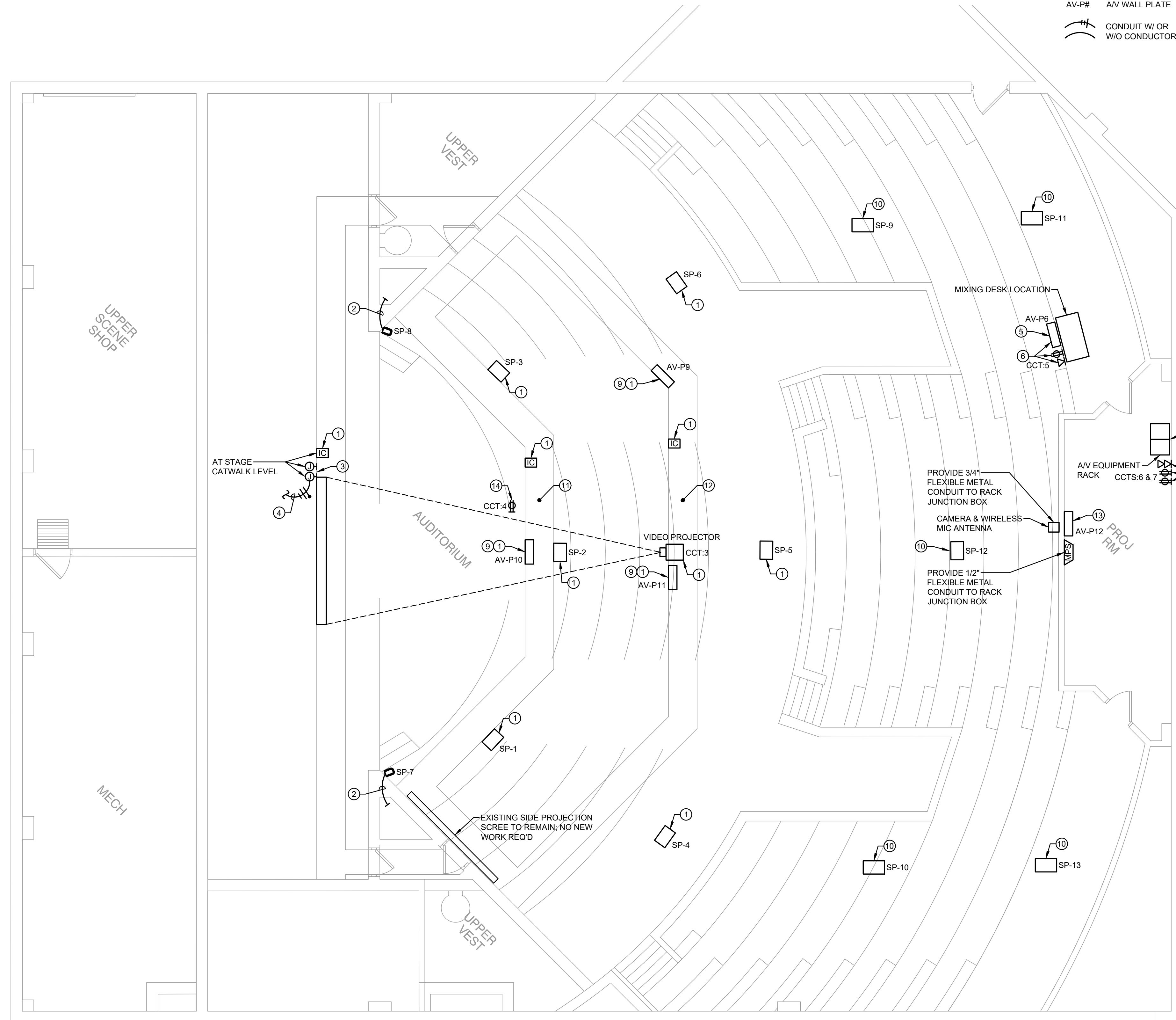
NUMBER	DATE	COMMENTS
02	03/17/2022	ADDENDUM 1
01	03/03/2022	ISSUED FOR BID

DRAWING TITLE

UPPER LEVEL - ELECTRICAL PLAN

SHEET NUMBER

E1.1



ALL EXPOSED CONDUITS IN THIS AREA SHALL BE PAINTED BLACK.

1 UPPER LEVEL - ELECTRICAL PLAN
 SCALE: 3/16" = 1'-0"



ARCHITECTS:

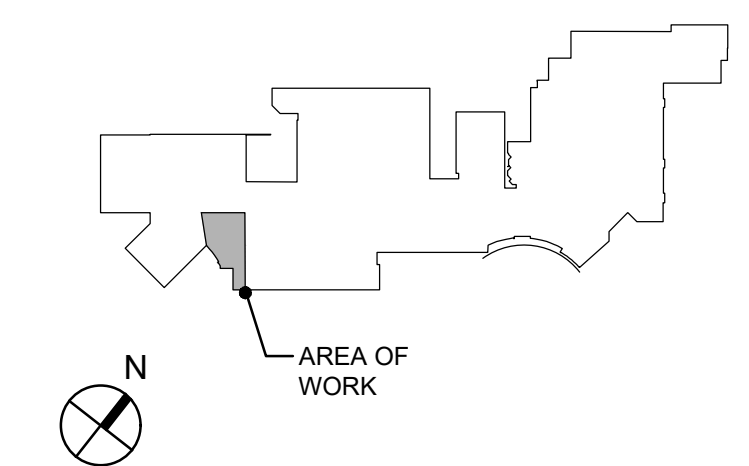
STR Partners, LLC
 350 West Ontario Street | Suite 200
 Chicago, IL 60654

T: 312.464.1444
 www.strpartners.com

ROOFING AND BUILDING ENVELOPE:
LIPP A/V DESIGN INC
 420 Mayfair Ln
 Buffalo Grove, IL 60089
 (847) 808-8790

MEP #0020220303:
CS2 DESIGN GROUP, LLC
 837 Oakton Street
 Elk Grove Village, IL 60007
 (847) 981-1880

KEY PLAN



SCOPE DOCUMENTS

This drawing is one drawing within a complete set of documents and shall not be considered separately from the Drawings as a whole. The Drawings indicate the general scope of the project in terms of architectural design concepts, the dimensions of the building, the major architectural elements and the type of structural, mechanical, and electrical systems. As Scope Documents, the Drawings do not necessarily indicate or describe all work required for full performance and completion of the requirements of the Construction Documents. On the basis of the general scope indicated or described, the Contractor shall furnish all items required for the proper execution and completion of the Work.

© 2022 STR PARTNERS, LLC

PROJECT

D116 RLHS THEATER AV SYSTEM RENOVATION
ROUND LAKE HIGH SCHOOL
 800 High School Drive
 Round Lake, IL 60073

ROUND LAKE COMMUNITY UNIT SCHOOL DISTRICT 116
 884 W Nippersink Road
 Round Lake, IL 60073

CLIENT PROJECT NUMBER

886-B-2

STR PROJECT NUMBER

21051.01

DRAWING DATES

NUMBER	DATE	COMMENTS
.	.	.
.	.	.
.	.	.
.	.	.
.	.	.
.	.	.
02	03/17/2022	ADDENDUM 1
01	03/03/2022	ISSUED FOR BID

DRAWING TITLE

UPPER LEVEL - ELECTRICAL PLAN

SHEET NUMBER

E1.2

LEGEND:

- DUPLEX RECEPTACLE
- JUNCTION BOX
- MONITOR / PAGE SPEAKER
- VOLUME CONTROL
- INTERCOM WALL PLATE
- AV WALL PLATE
- CONDUIT W/ OR W/O CONDUCTORS

DRAWING NOTES:

1. ONE 1-COMPARTMENT VERTICAL RACEWAY (UP TO CONCESSIONS AREA CEILING) legrand / WIREMOLD MODEL# V700-SERIES FOR LOW VOLTAGE. FIELD PAINT TO WHITE.
2. ONE 1-GANG DEEP JUNCTION BOX WITH ONE 3/4" CONDUIT INTO ELECTRICAL ROOM; THEN UP, ACROSS, AND INTO CONCESSIONS AREA CEILING.
3. RUN SPEAKER CABLING IN EXISTING WIREMOLD RACEWAY. PROVIDE CONDUIT FROM THE TRACK TO ABOVE THE CONCESSION STAND.
4. CUSTOM SURFACE MOUNTED TYPE JUNCTION BOX SIZED FOR 7" CONTROL SYSTEM TOUCH PANEL. CONFIRM EXACT SIZE WITH AV CONTRACTOR. PAINT BLACK. MOUNT AT 58" A.F.F.. ROUTE CONDUIT INTO ELECTRICAL ROOM, THEN UP, ACROSS, AND INTO CONCESSIONS AREA CEILING.
5. ONE 1-GANG SURFACE MOUNTED TYPE JUNCTION BOX AT OUTLET HEIGHT. ROUTE CONDUIT UP WALL AND INTO CONCESSIONS AREA CEILING FOR EAST MIC PLATE AND TO TOUCH PANEL BOX FOR AV PLATE AT THE THEATER DOOR.
6. FOR OPEN CEILING-MOUNTED SPEAKER (BETWEEN CEILING "CLOUDS"), PROVIDE ONE 2-GANG J-BOX MOUNTED AT CEILING SLAB OR OTHER STRUCTURE. COORDINATE EXACT REQUIREMENTS WITH AV CONSULTANT. LOOSE WIRE RUN BY AV CONTRACTOR. PROVIDE ONE JUNCTION BOX WITH 3/4" CONDUIT TO ABOVE CONCESSION STAND.
7. COORDINATE EXACT ROUTING WITH OWNER TO ABOVE CONCESSION STAND.

GENERAL NOTES:

1. THE MINIMUM WIRE SIZE SHALL BE #12 AWG. PROVIDE DEDICATED NEUTRALS; NO COMMON NEUTRALS ARE PERMITTED.
2. THE MINIMUM CONDUIT SIZE FOR HOMERUNS AND BRANCH FEEDS SHALL BE 3/4". 1/2" CONDUIT SHALL BE ACCEPTABLE FOR BRANCH WIRING FOR SINGLE CIRCUITS ONLY. ALL BRANCH CIRCUITS SHALL TERMINATE AT 20A-1P CIRCUIT BREAKERS IN PANELBOARD INDICATED UNLESS SPECIFICALLY INDICATED OTHERWISE.
3. THE CONTRACTOR SHALL UPSIZE CONDUCTORS AND CONDUITS (OVER 75'-0" IN LENGTH) TO COMPENSATE FOR VOLTAGE DROP.
4. THE CONTRACTOR SHALL PROVIDE ALL PENETRATIONS, SLEEVES AND SEALANT AS REQUIRED THRU PARTITIONS TO ACCOMMODATE ANY CONDUITS / RACEWAYS, CABLING, ETC... ALL PENETRATIONS THRU RATED WALL ASSEMBLY(IES) MUST MEET THE UL RATING OF THE WALL SYSTEM(S).
5. REFER TO AV PLANS FOR ADDITIONAL INFORMATION REGARDING MOUNTING HEIGHTS AND EXACT LOCATIONS OF ALL ELECTRICAL DEVICES BEFORE ROUGH-IN.
6. THE CONTRACTOR SHALL VERIFY EXACT EQUIPMENT LOCATIONS, LOAD INFORMATION, VOLTAGE, AMPERAGE, CONNECTION TYPE, ETC... WITH EQUIPMENT BEING SUPPLIED PRIOR TO ROUGH-IN.
7. ALL WALL-MOUNTED ELECTRICAL DEVICES (RECEPTACLES, OUTLETS, LIGHT SWITCHES, ETC...) TO HAVE COLOR SELECTED BY ARCHITECT WITH STAINLESS STEEL FACEPLATE(S).
8. ALL EQUIPMENT / ITEMS INDICATED ON PLANS ARE NEW UNLESS SPECIFICALLY INDICATED OTHERWISE.

AUDIO-VISUAL SYSTEMS COORDINATION NOTE:
 REFER TO AV-SERIES DRAWINGS FOR EXACT REQUIREMENTS. THIS CONTRACTOR SHALL BE RESPONSIBLE TO CONFIRM EXACT CONDUIT / RACEWAY QUANTITIES AND SIZES, BACKBOX SIZES, LOCATIONS, ETC... CLOSELY COORDINATE WITH AUDIO-VISUAL CONSULTANT AS REQUIRED. PROVIDE AND ADJUST ALL AS REQUIRED FOR COMPLETE AND FULLY FUNCTIONAL INSTALLATION.

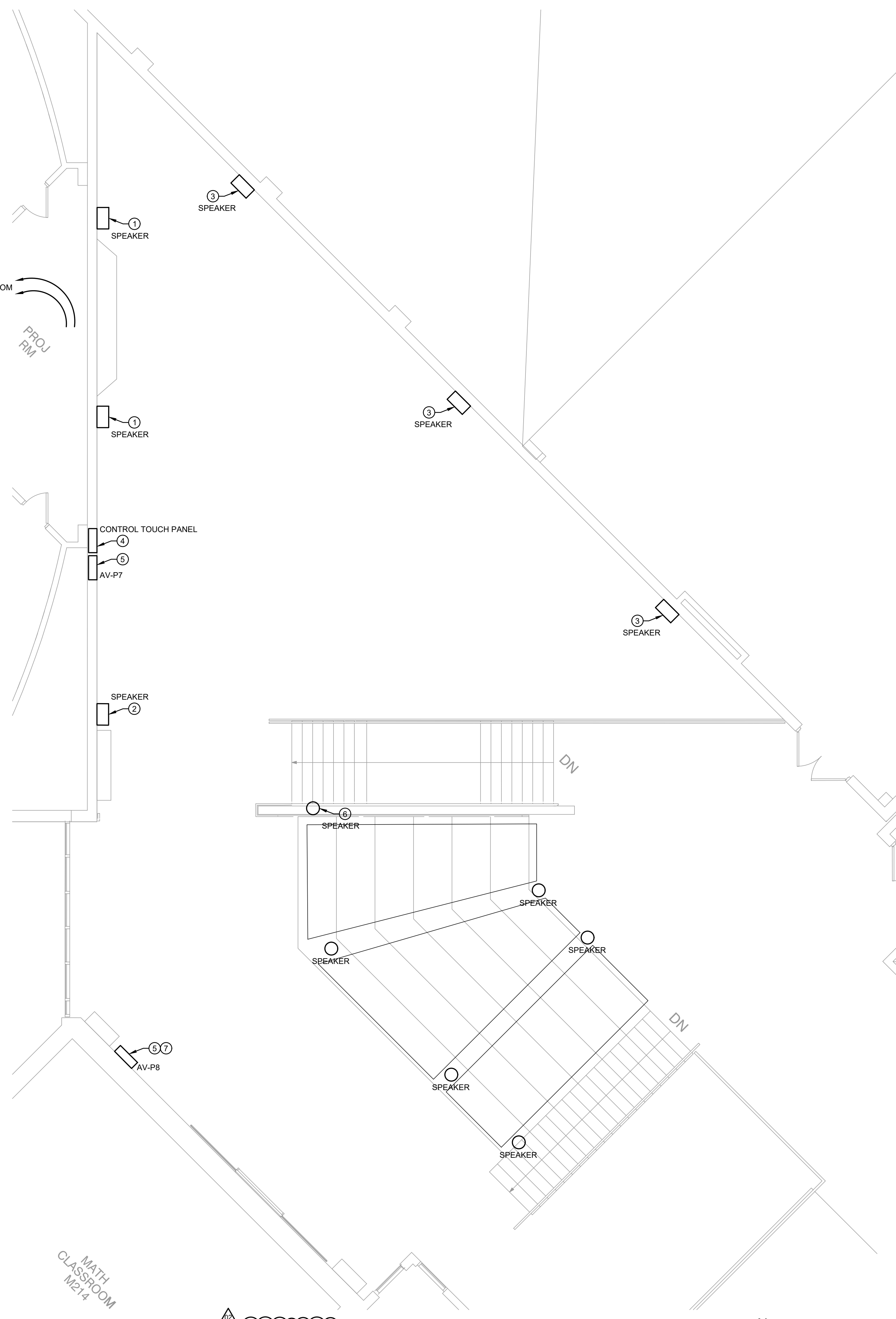
CIRCUITING NOTE:
 THE ELECTRICAL CONTRACTOR SHALL VERIFY ALL AS REQUIRED FOR THIS PROJECT'S WORK: PROVIDE NEW CIRCUITS / CIRCUIT BREAKERS (MATCH EXISTING TYPE) WHERE REQUIRED - VERIFY SPARES AND SPACES IN RESPECTIVE EXISTING ELECTRICAL PANEL AND CIRCUIT ACCORDINGLY. VERIFY PANEL LOADING PRIOR TO ALL FINAL CONNECTIONS.

ROUTING AND SEPARATION NOTE:
 AV SYSTEM RACEWAYS SHOULD NOT BE INDISCRIMINATELY ROUTED THROUGHOUT A FACILITY. AV CIRCUITS ARE SUSCEPTIBLE TO ELECTRICAL NOISE AND REQUIRE SPECIFIC SEPARATION TO MINIMIZE THESE INTERFERENCES. SEPARATE INNERDUCT BY AT LEAST TWELVE INCHES FOR VARIOUS AV SIGNAL LEVELS INCLUDING MIC / LINE LEVEL, SPEAKER LEVEL, AND AC POWER. REFER TO AV-SERIES DRAWINGS.

ALL EXPOSED CONDUITS IN THE LOBBY SHALL BE PAINTED WHITE.

TWO 3/4" CONDUITS FROM ABOVE CONCESSIONS AREA TO RACK

FILE: F:\886-B-2\E1.2\886B2 1.2.DWG SAVED BY: DYOON DATE: 3/17/2022 TIME: 2:39 PM



1 LOBBY - ELECTRICAL PLAN
 SCALE: 3/16" = 1'-0"