



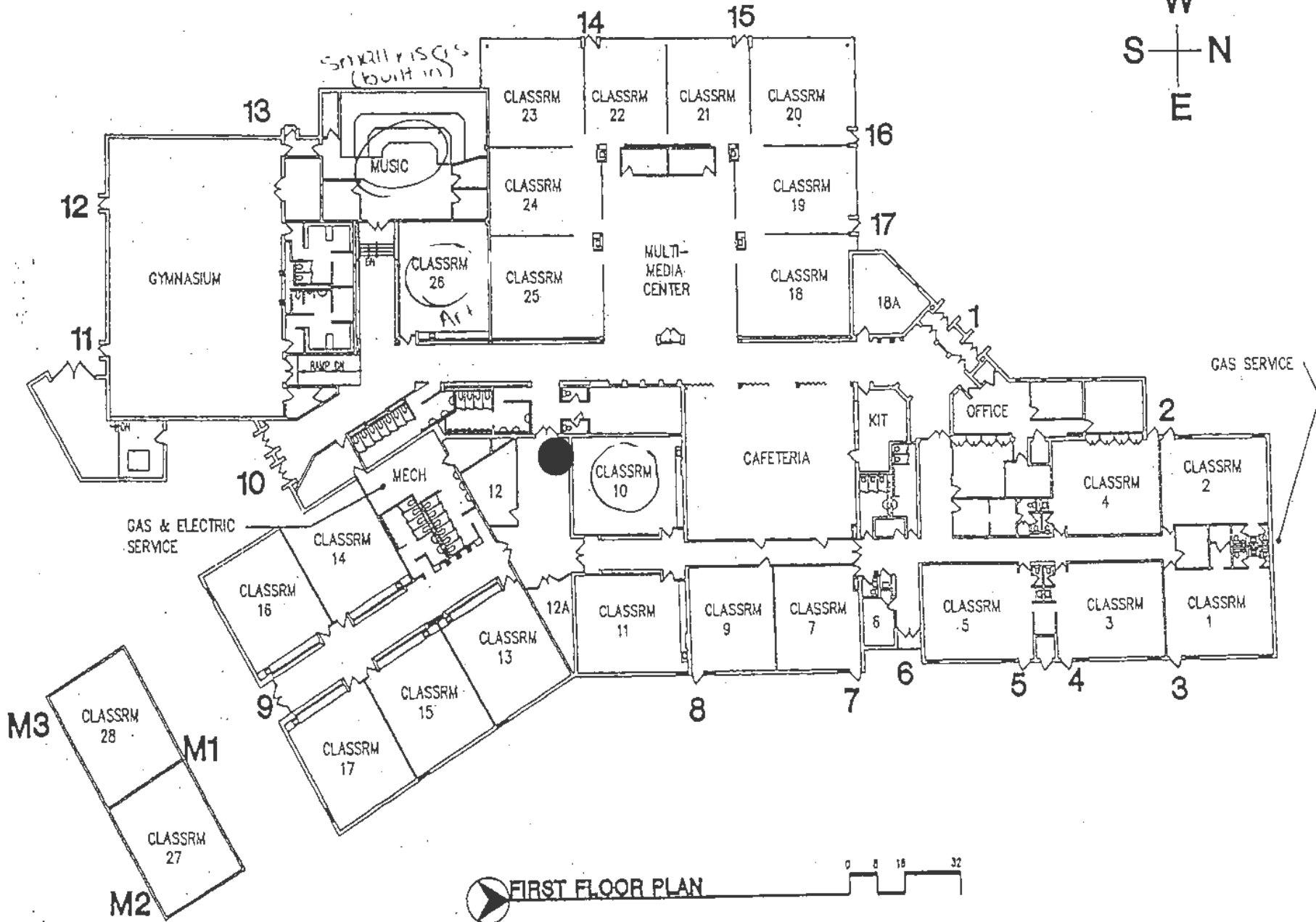
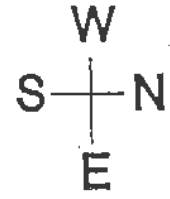
FORM 470#: 220007983
Addendum No. 1
January 23, 2022

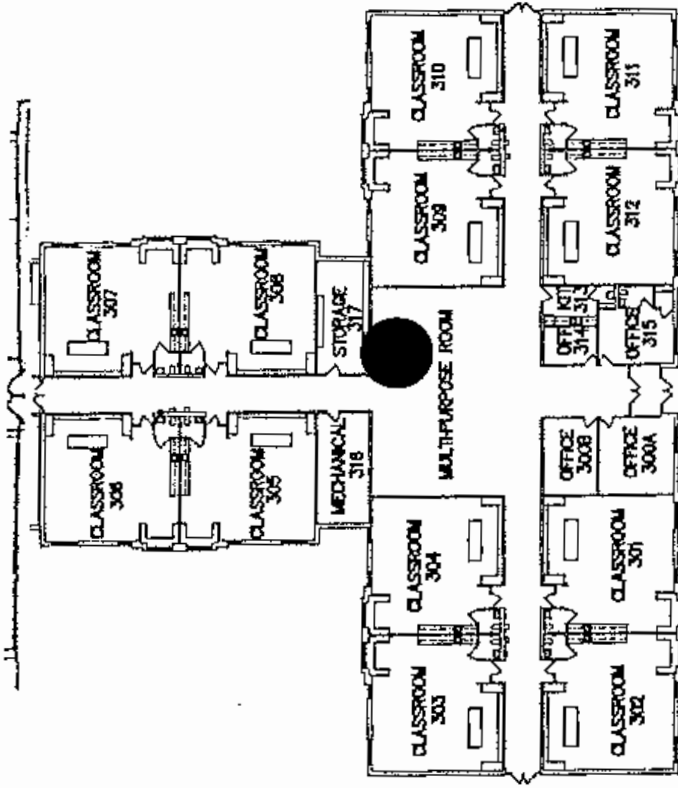
DATE: January 23, 2022
PROJECT NAME: E-rate Eligible Purchase and Installation Services of Network
Hardware and Wireless Infrastructure
RFP IDENTIFIER: 2022-RLAS116-RFP-NETWORK REFRESH
FORM 470 #: 220007983


Please note the following information has been revised to incorporate as part of the Respondents RFP documents.

1. Enclosed are the following documents (Note: Any previously issued floor plans are hereby replaced by rev.1):
 - a. RLAS – Floor Plans_rev1.

Beach

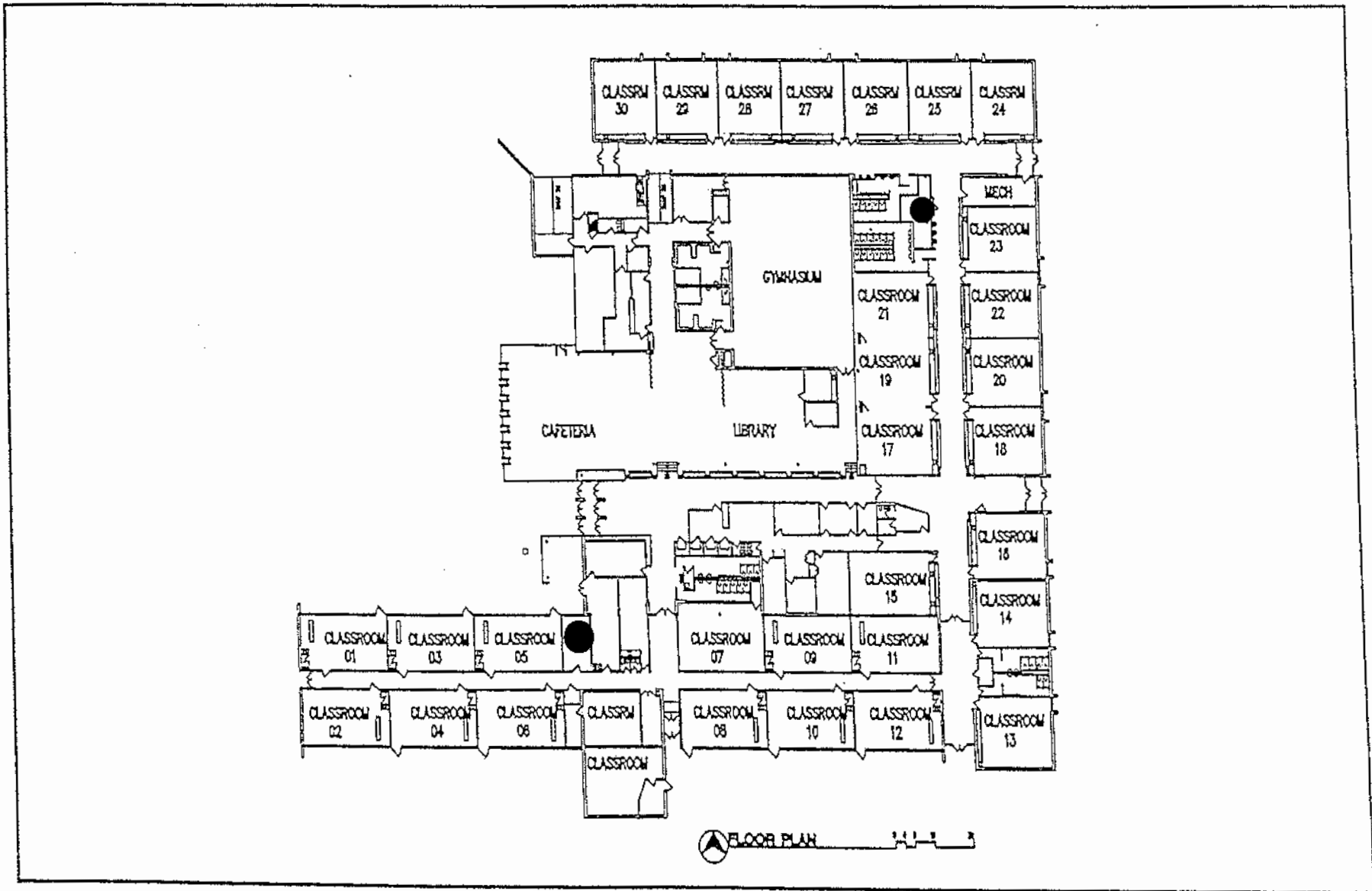




 FLOOR PLAN 

EARLY EDUCATION CENTER





ELLIS ELEMENTARY SCHOOL

FLOOR PLAN

ROUND LAKE AREA SCHOOLS C.U.D. 116

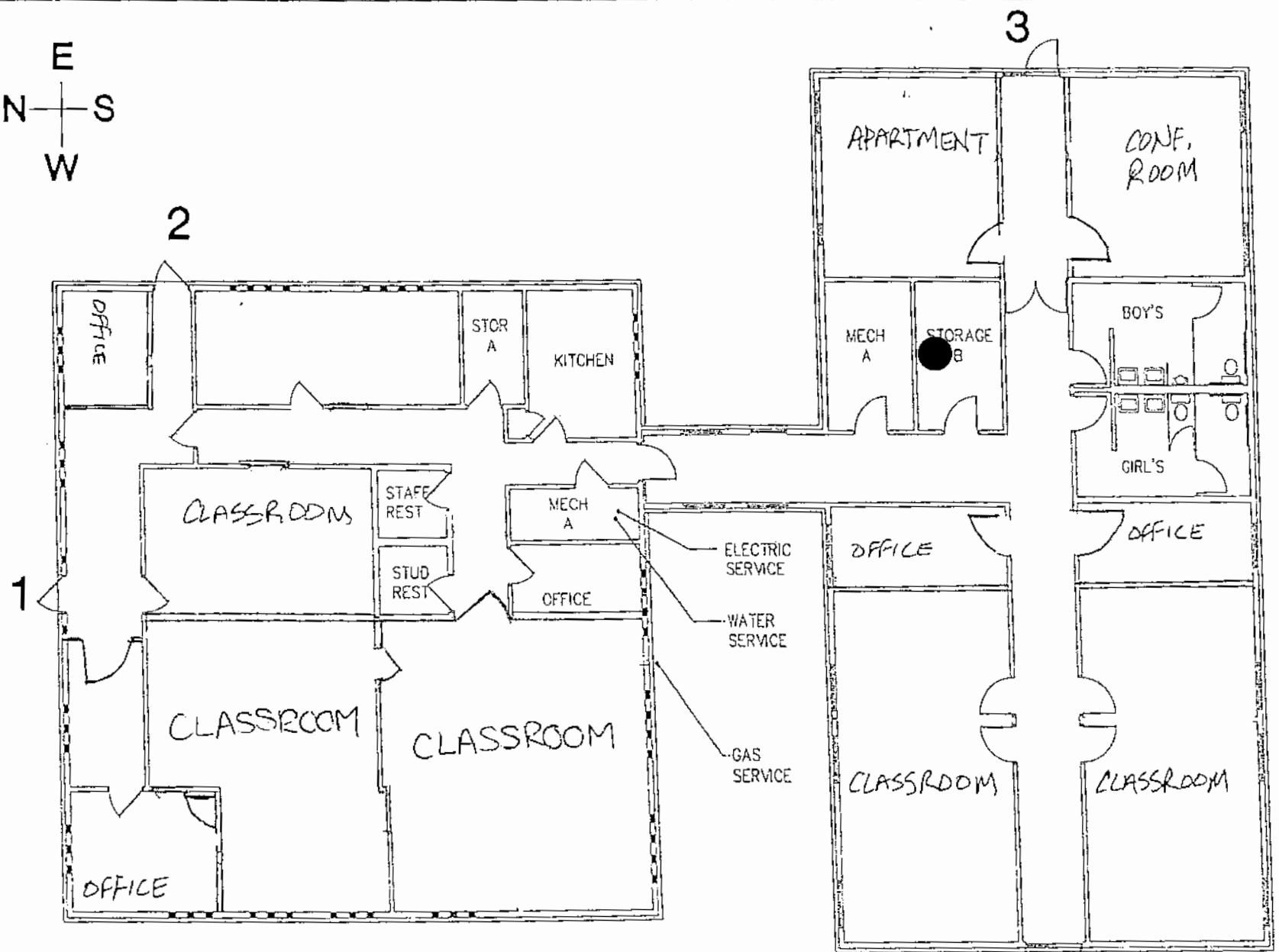
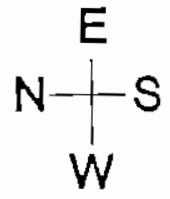
1359-200315



GREENASSOCIATES
ARCHITECTS

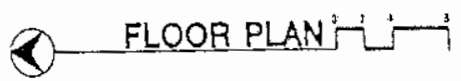
Green Associates Architects, Inc.
 111 Deerlake Road, Suite 135
 Deerfield, IL 60015
 telephone 847-317-0332

REVISED
8.10.15



2014 ESC
STUDENT SERVICES BUILDING
(S.S.B.)

801 SUNSET DRIVE

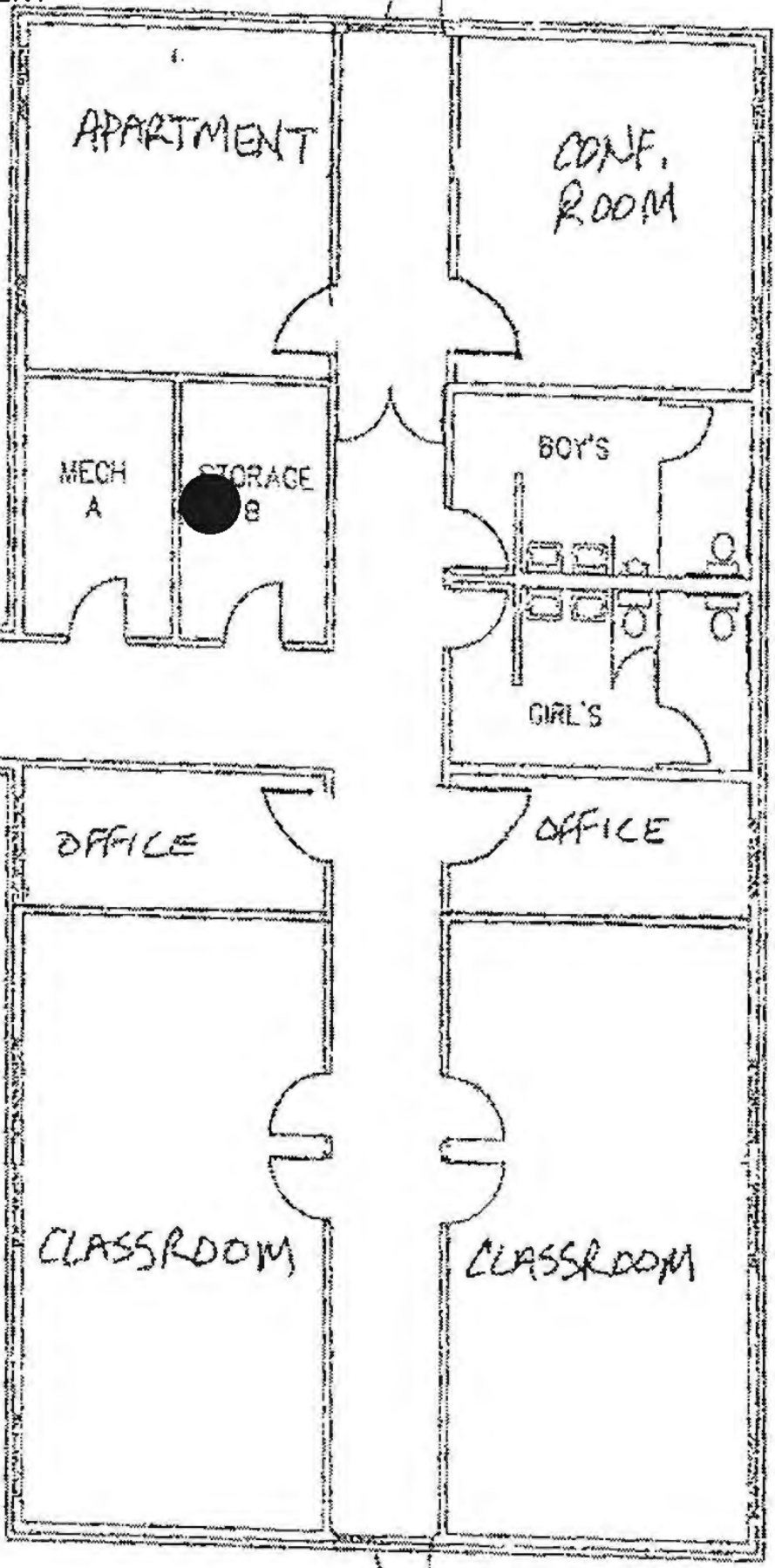


4

8.10.15

ESC
STUDENT
SIDE

3



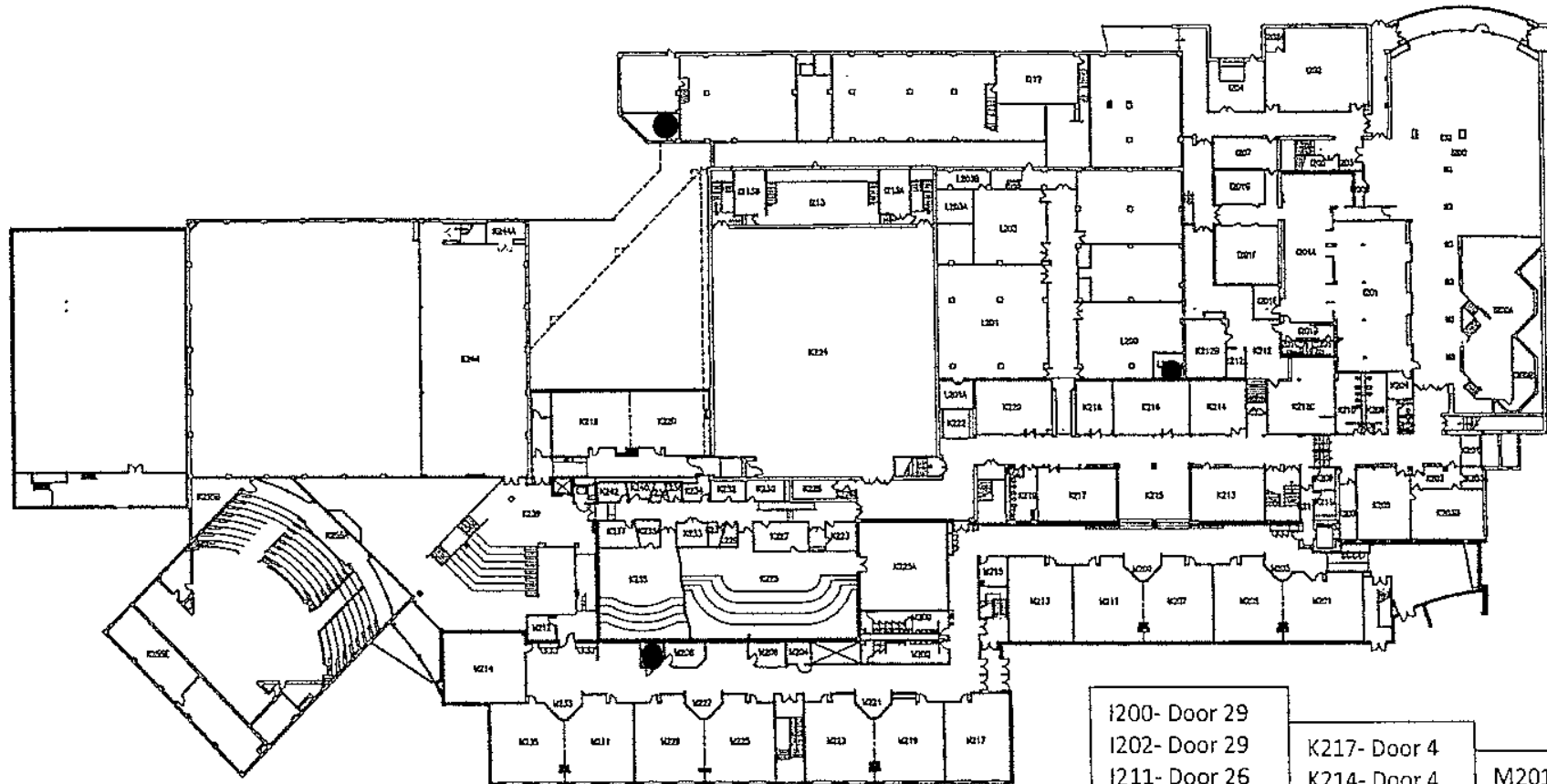
4



High School

Round Lake Area Schools

Intermediate Level Floor Plan

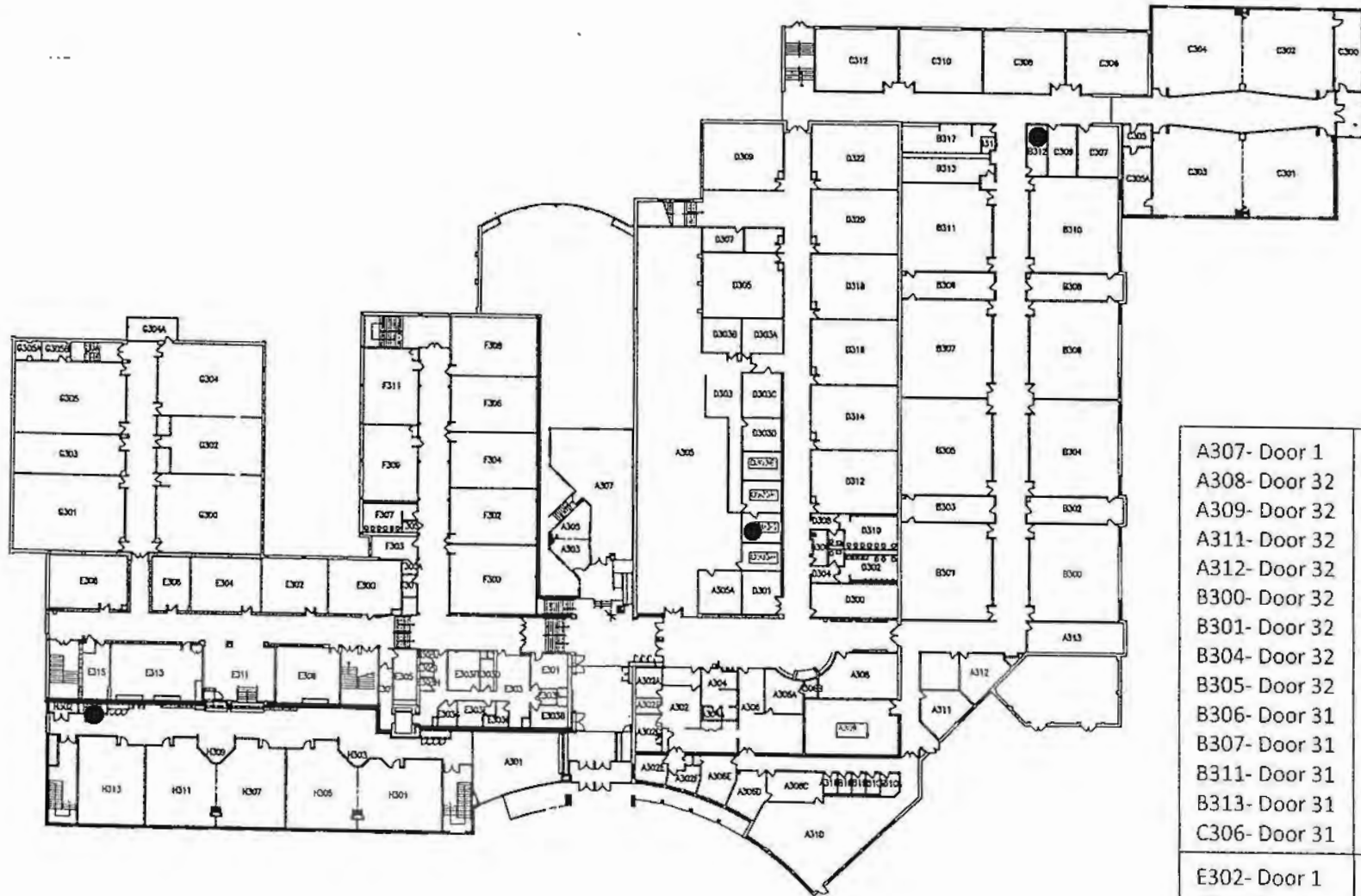


I200- Door 29
I202- Door 29
I211- Door 26
I212- Door 26
I213- Door 21
I213A- Door 21
I213B- Door 21
I214- Door 26
I216- Door 21
I218- Door 21
I224- Door 21
K213- Door 4
K214- Door 4
K215- Door 4
K216- Door 4

K217- Door 4
K214- Door 4
K215- Door 4
K216- Door 4
K217- Door 4
K220- Door 4
K224- Door 4
K225- Door 4
K235- Door 4
K248- Door 7
K250- Door 7
L200- Door 26
L201- Door 26
L203- Door 26

M201- Door 7
M205- Door 3
M207- Door 3
M211- Door 3
M213- Door 3
M214- Door 6
M217- Door 6
M219- Door 6
M223- Door 6
M225- Door 6
M229- Door 6
M231- Door 6
M235- Door 6

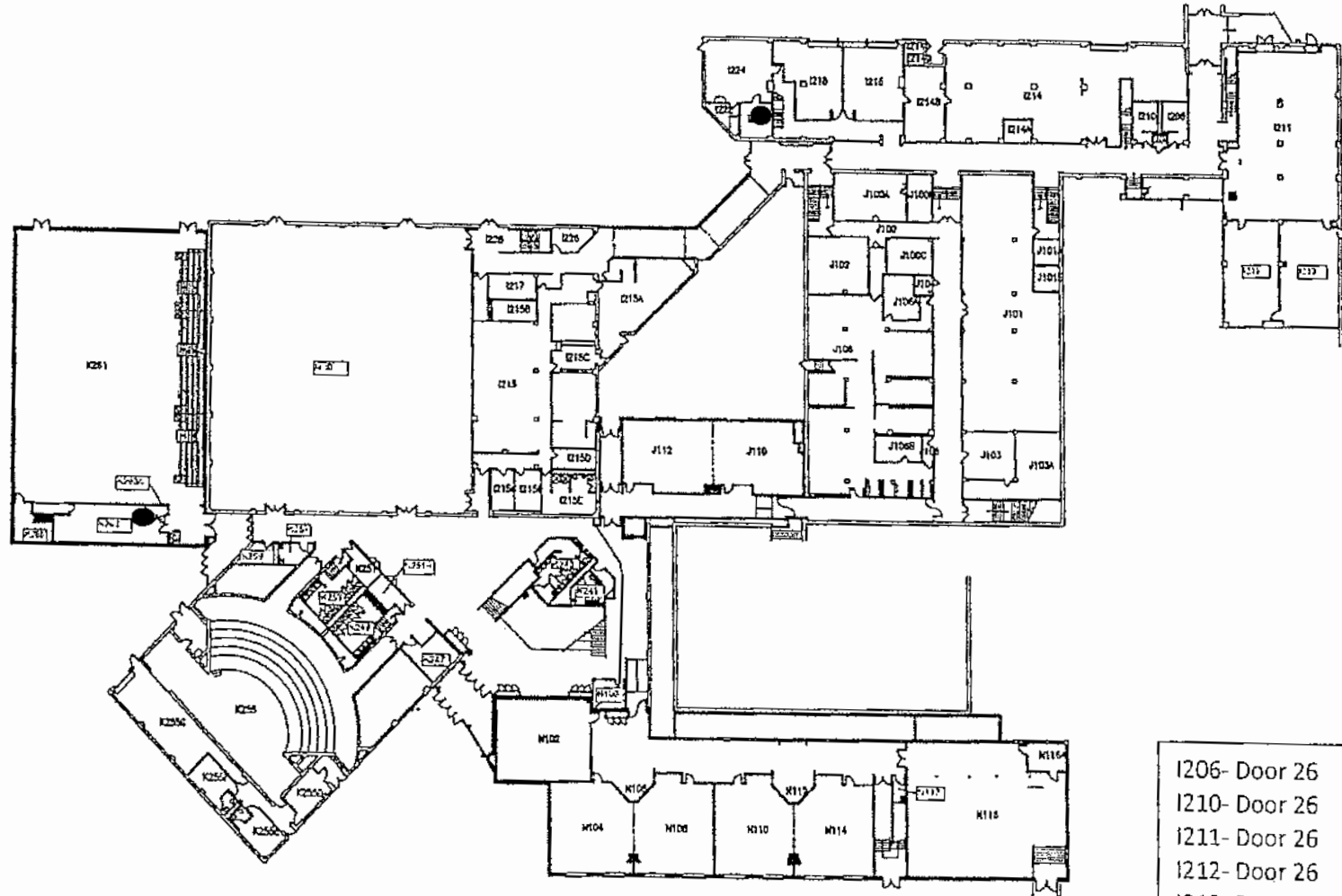
High School



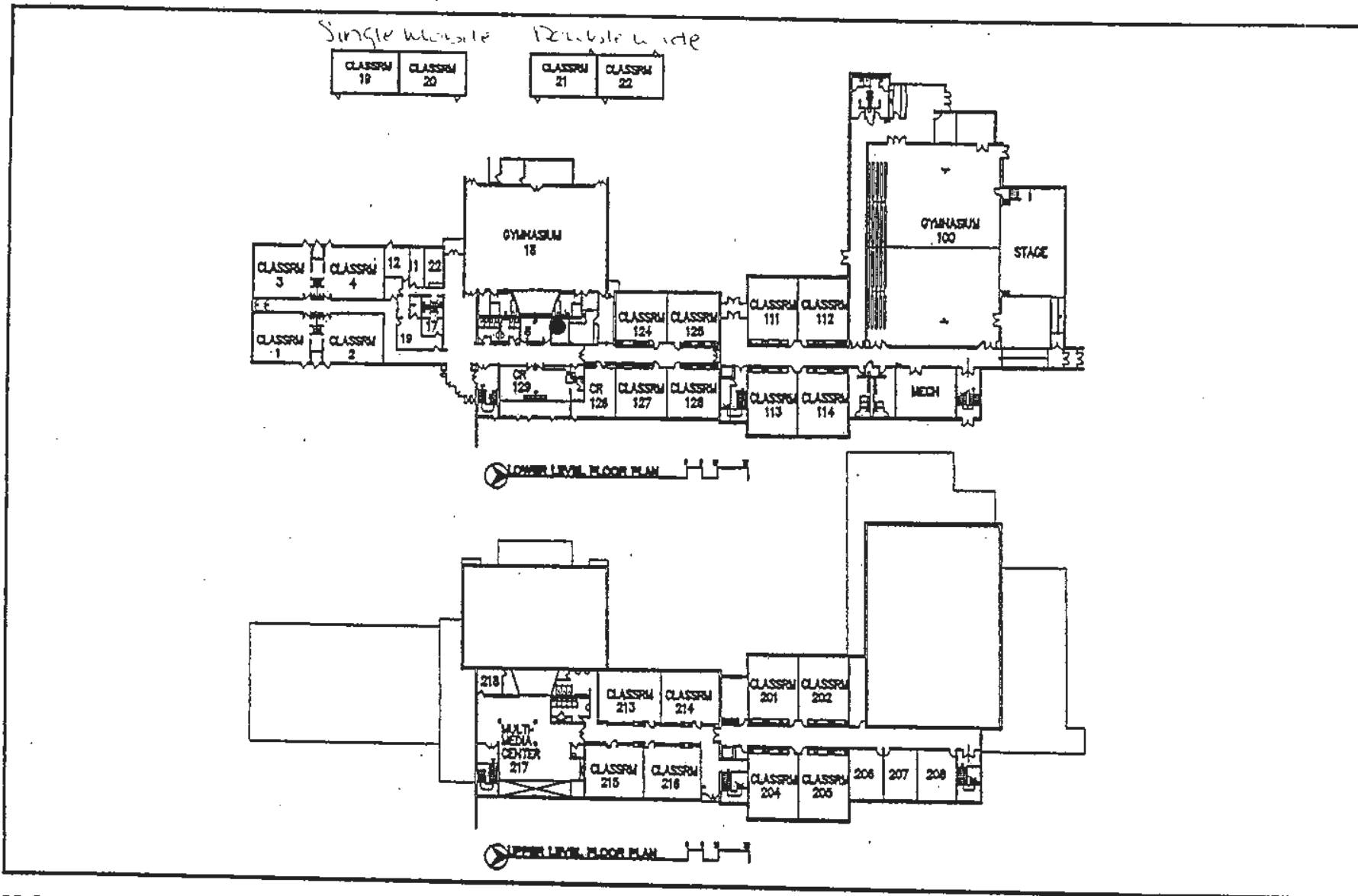
A307- Door 1	C308- Door 31
A308- Door 32	C309- Door 31
A309- Door 32	C310- Door 31
A311- Door 32	C312- Door 31
A312- Door 32	D230- Door 31
B300- Door 32	D301- Door 1
B301- Door 32	D305- Door 31
B304- Door 32	D309- Door 31
B305- Door 32	D312- Door 1
B306- Door 31	D314- Door 1
B307- Door 31	D316- Door 31
B311- Door 31	D318- Door 31
B313- Door 31	D322- Door 31
C306- Door 31	E300- Door 1
E302- Door 1	G300- Door 4
E304- Door 1	G301- Door 4
E306- Door 1	G302- Door 4
E308- Door 4	G303- Door 4
E309- Door 4	G304- Door 4
E311- Door 1	G305- Door 4
E313- Door 1	H301- Door 3
F300- Door 26	H305- Door 3
F302- Door 26	H307- Door 3
F304- Door 26	H311- Door 3
F306- Door 26	H313- Door 3
F308- Door 26	
F309- Door 26	
F311- Door 26	

Round Lake Area Schools

Lower Level Floor Plan



- | | |
|----------------|---------------|
| I206- Door 26 | I224- Door 21 |
| I210- Door 26 | J110- Door 21 |
| I211- Door 26 | J112- Door 21 |
| I212- Door 26 | N102- Door 6 |
| I213- Door 21 | N104- Door 5 |
| I213A- Door 21 | N108- Door 5 |
| I213B- Door 21 | N110- Door 5 |
| I214- Door 26 | N114- Door 5 |
| I216- Door 21 | N130- Door |
| I218- Door 21 | |
| I220- Door 21 | |



INDIAN HILL ELEMENTARY SCHOOL

FLOOR PLANS

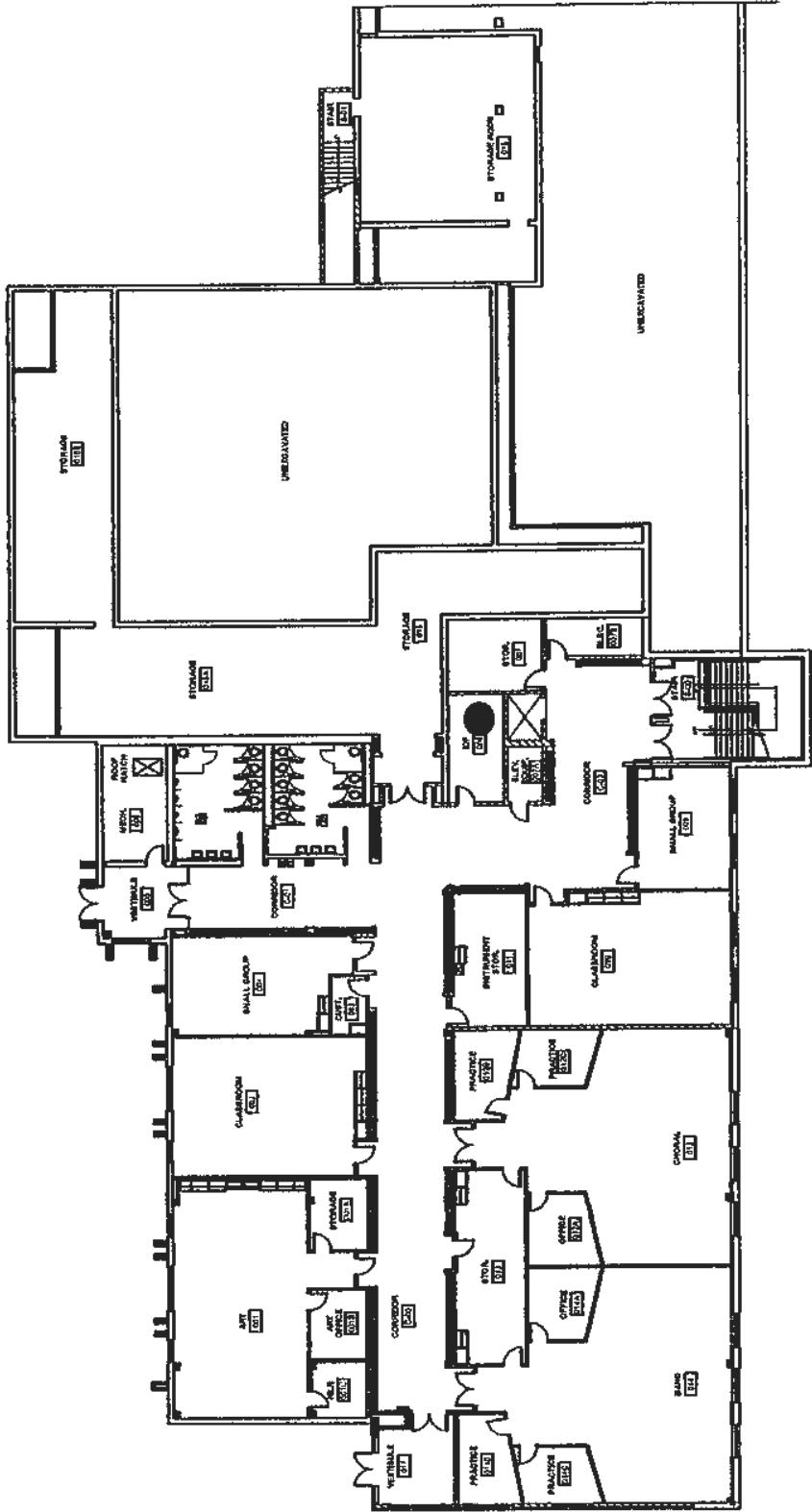
ROUND LAKE AREA SCHOOLS C.U.D. 116

1359-200315



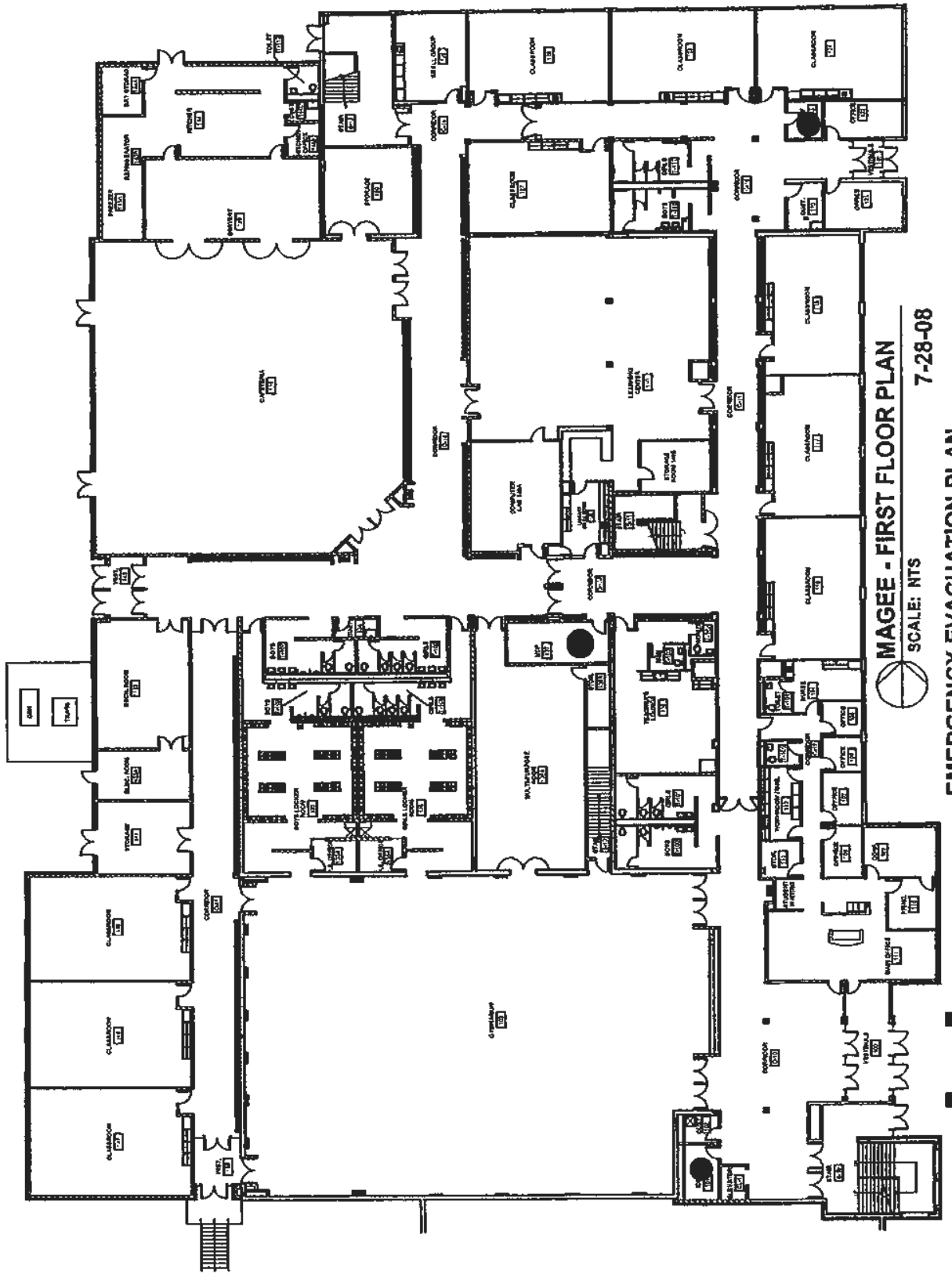
GREEN ASSOCIATES
© 2003 Green Associates, Inc.

Green Associates Architects, Inc.
 111 Deerlake Road, Suite 135
 Deerfield, IL 60015
 Telephone 847-317-0852
 Facsimile 847-374-0981



MAGEE - GROUND FLOOR PLAN
 SCALE: NTS
 7-28-08

EMERGENCY EVACUATION PLAN



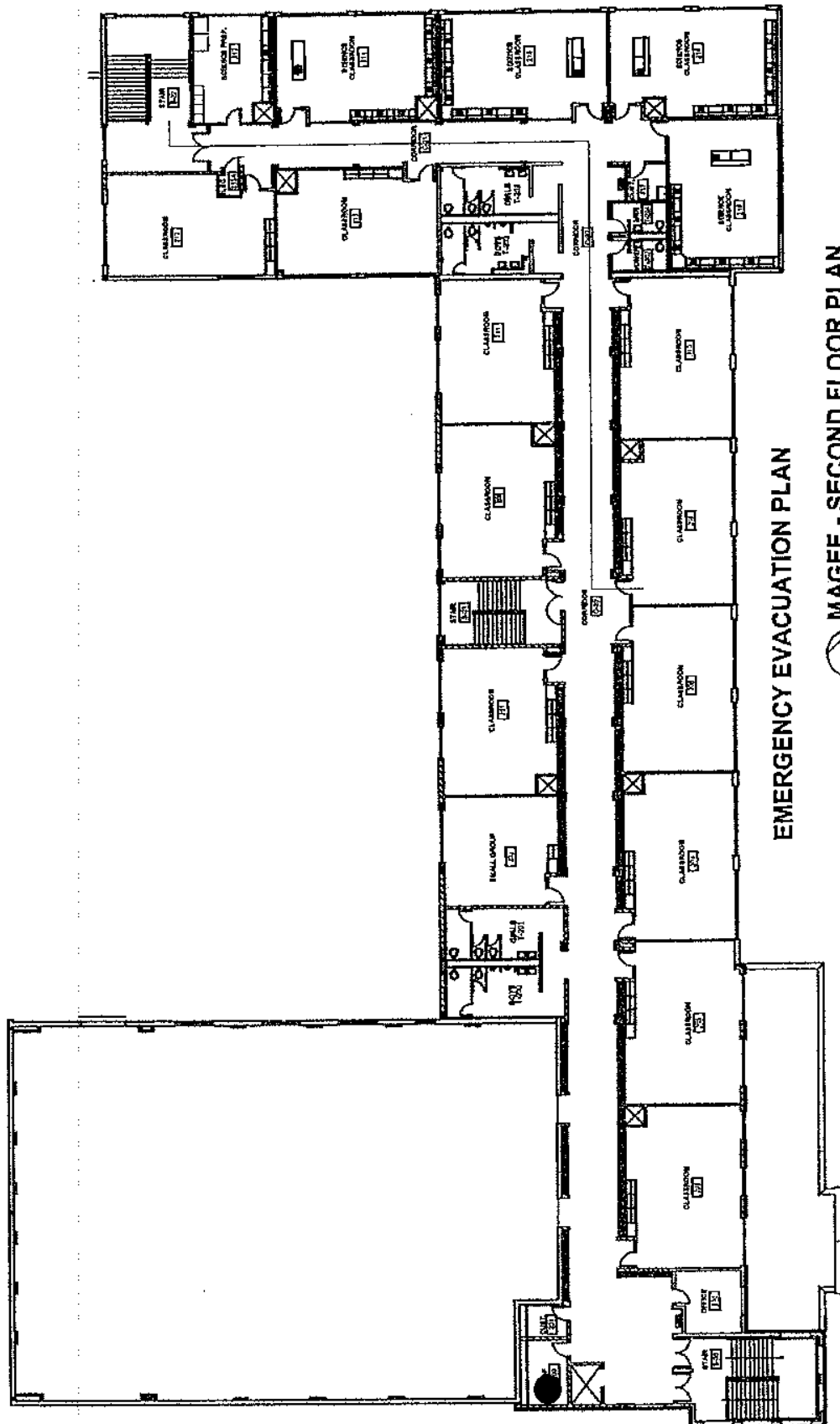
MAGEE - FIRST FLOOR PLAN

7-28-08

SCALE: NTS

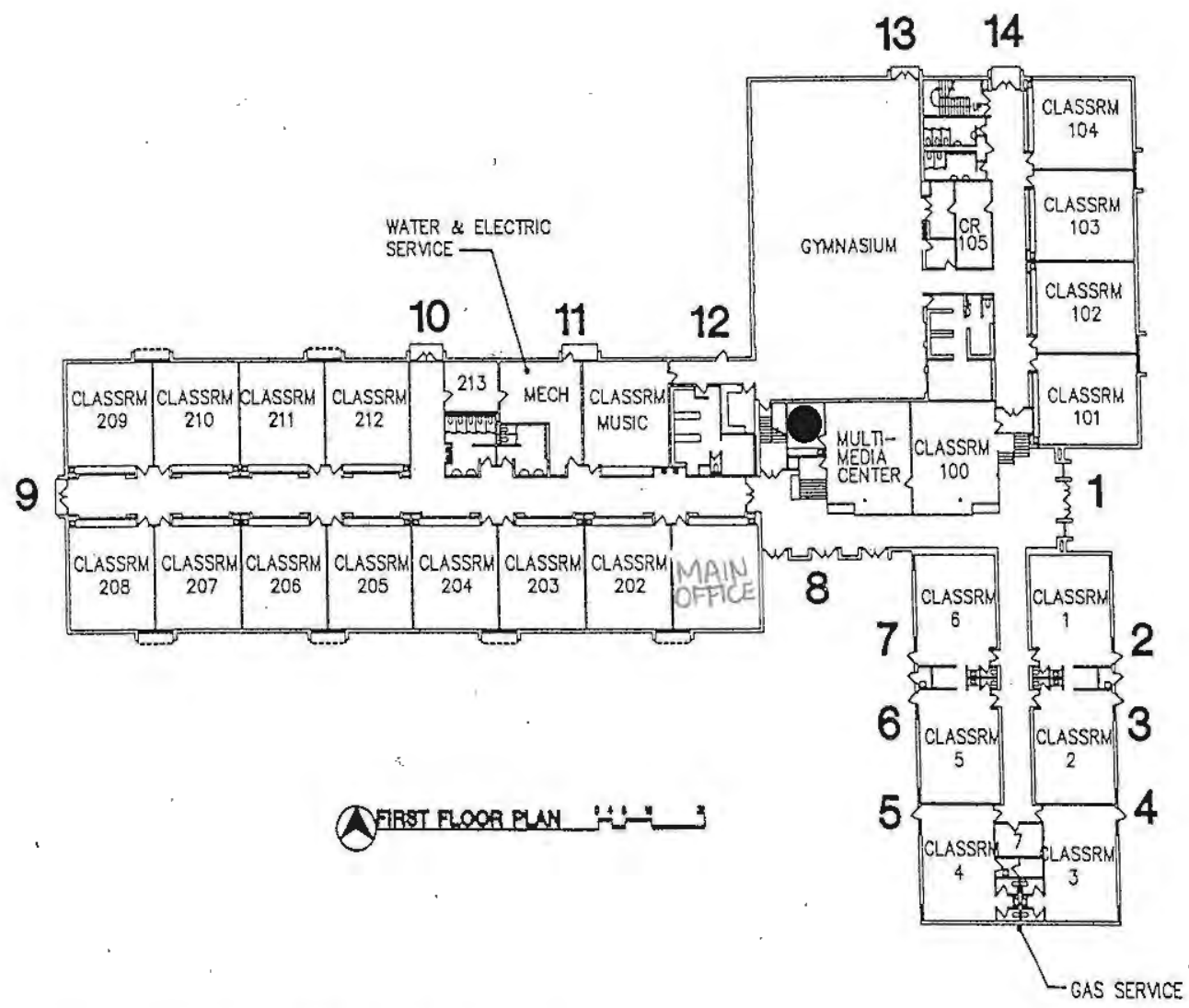
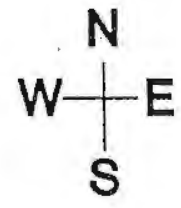


EMERGENCY EVACUATION PLAN

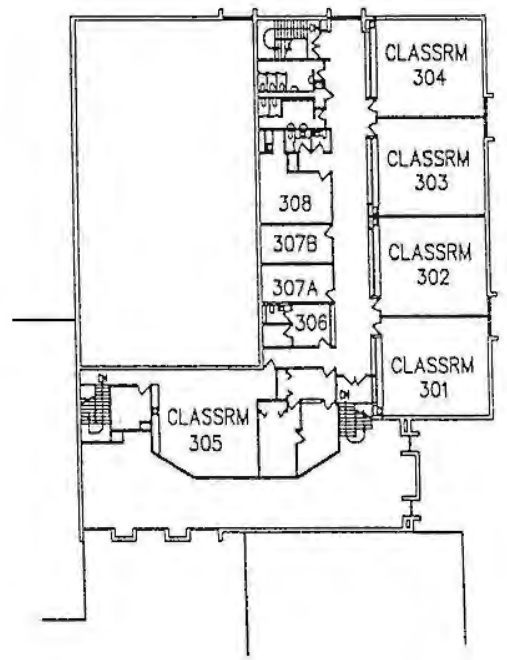


EMERGENCY EVACUATION PLAN

MAGEE - SECOND FLOOR PLAN
 SCALE: NTS
 7-28-08



FIRST FLOOR PLAN

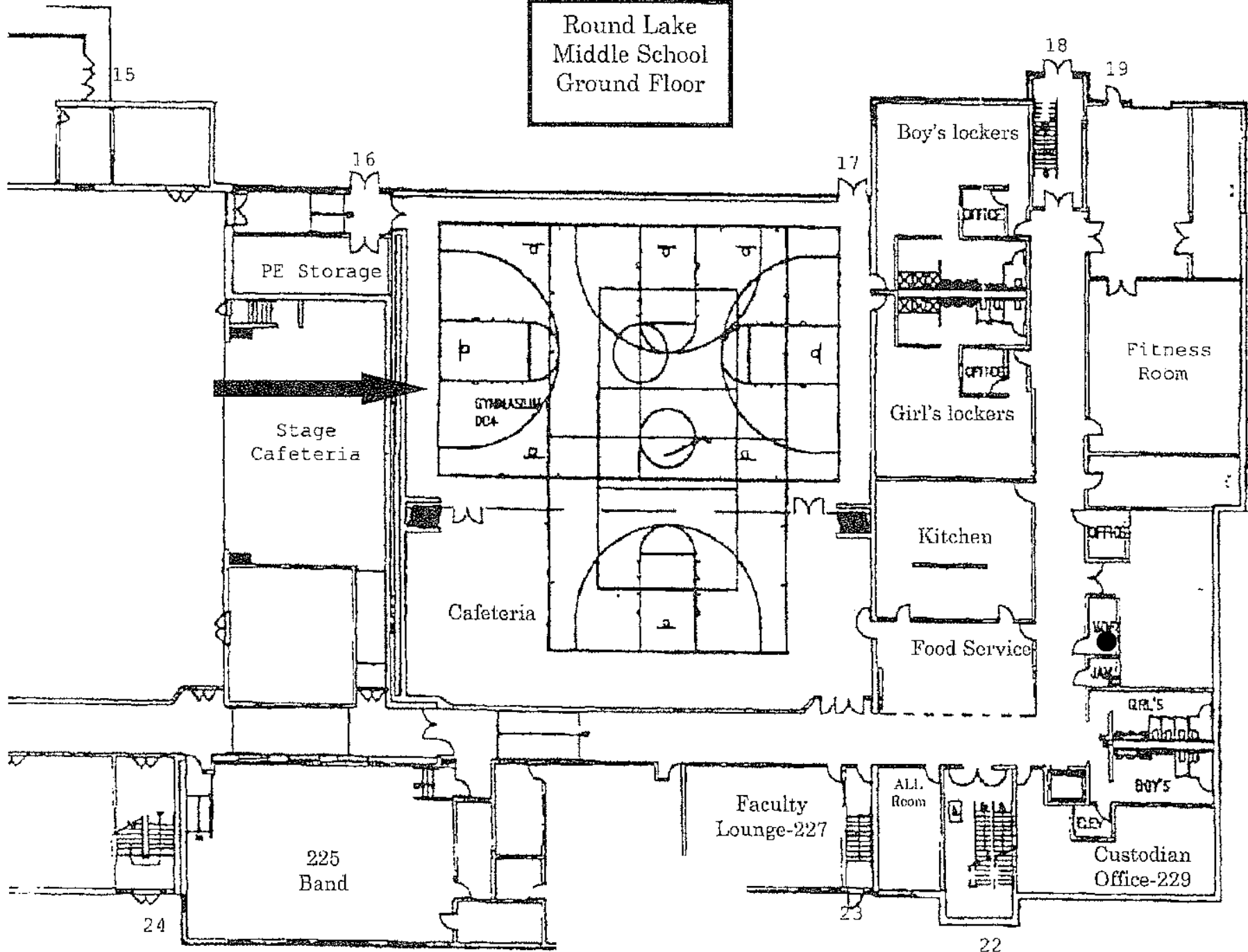


SECOND FLOOR PLAN

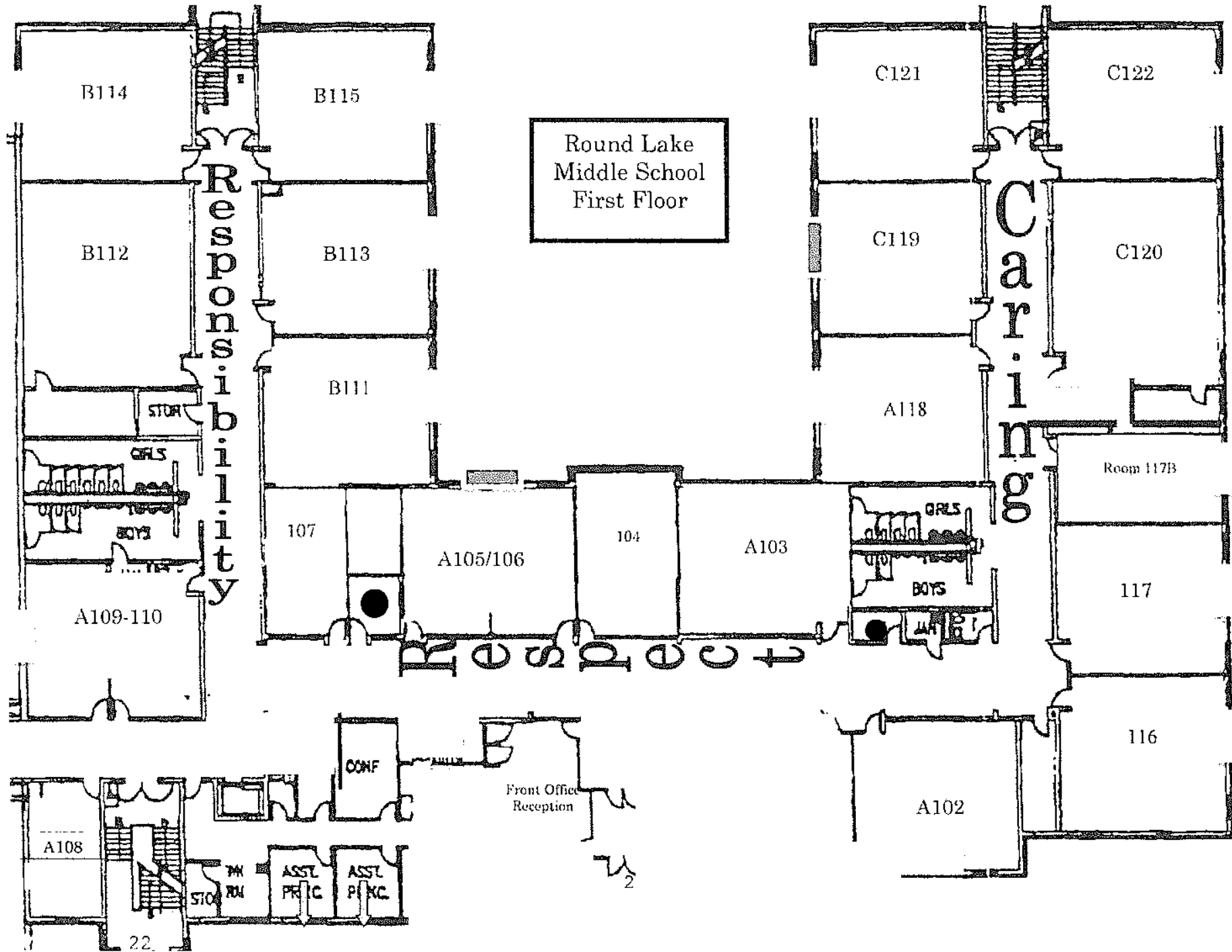
W.J. MURPHY ELEMENTARY SCHOOL

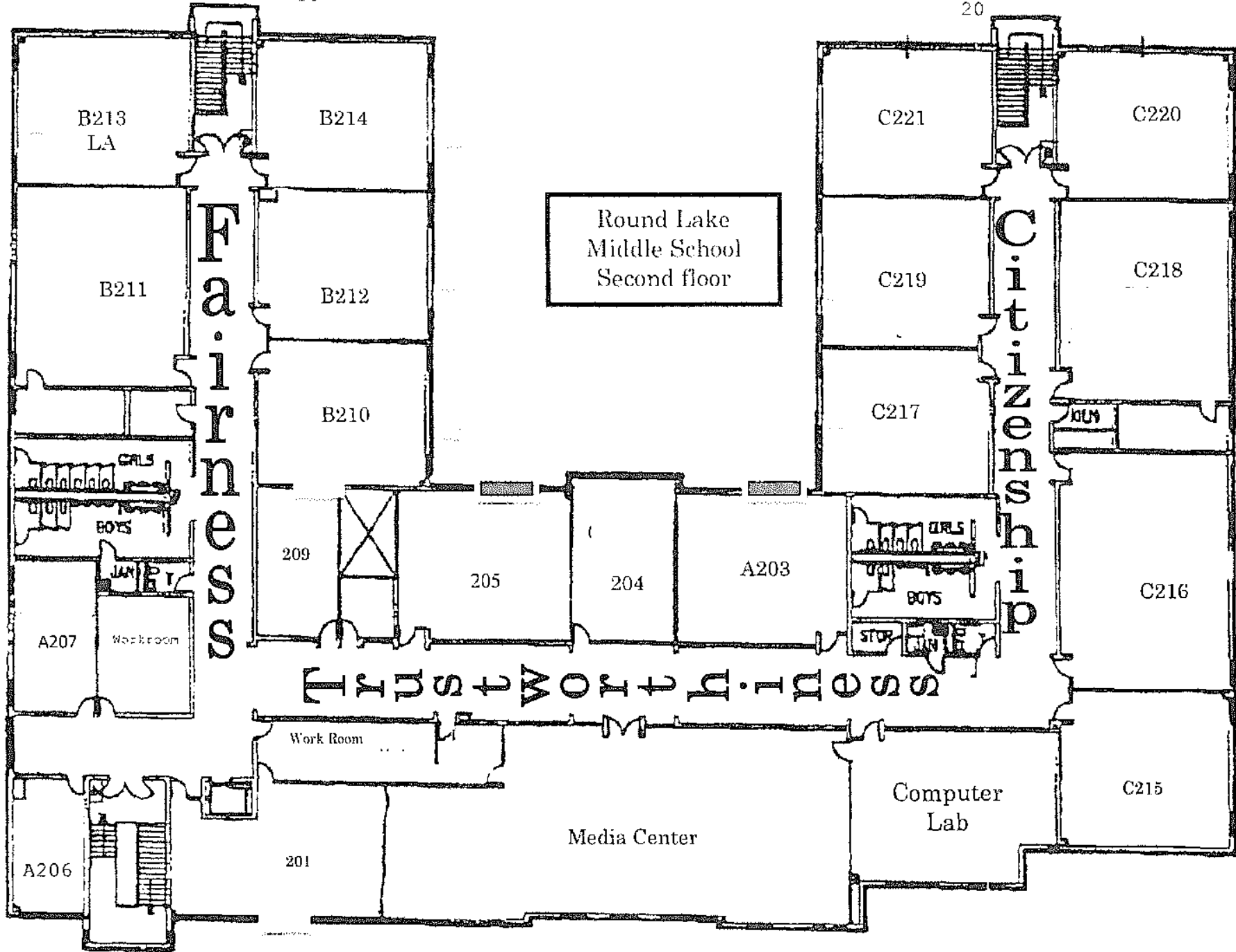
220 NORTH GREENWOOD
ROUND LAKE, IL 60073

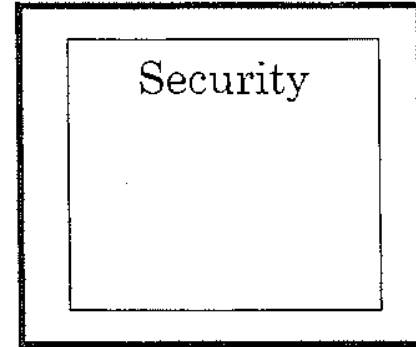
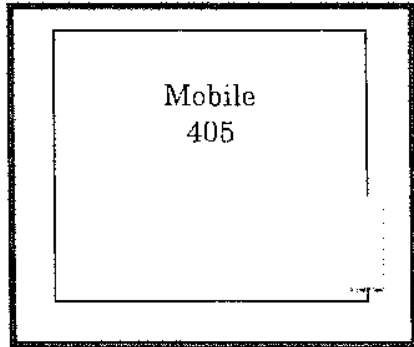
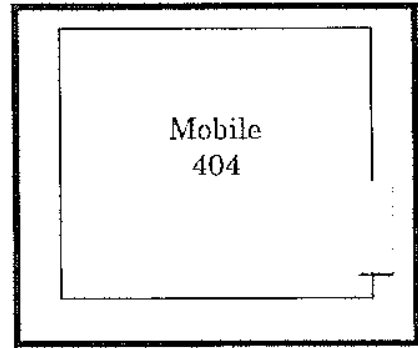
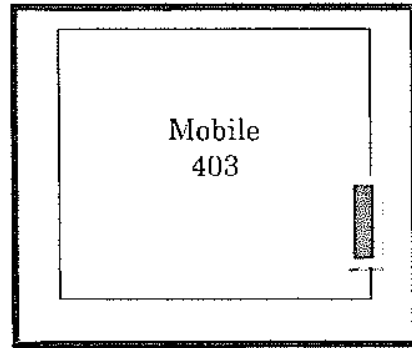
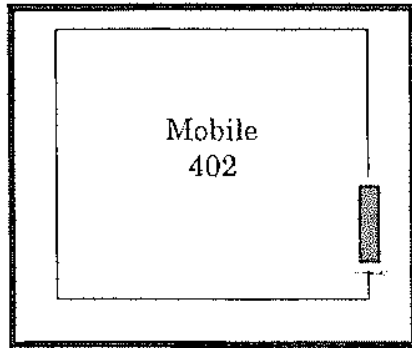
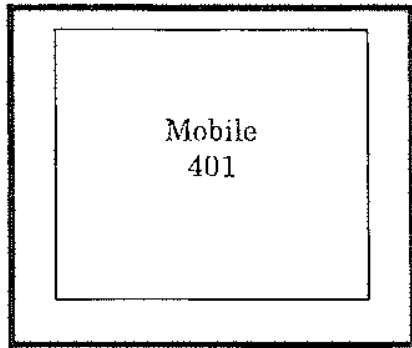
Round Lake
Middle School
Ground Floor



Round Lake Middle School
First Floor

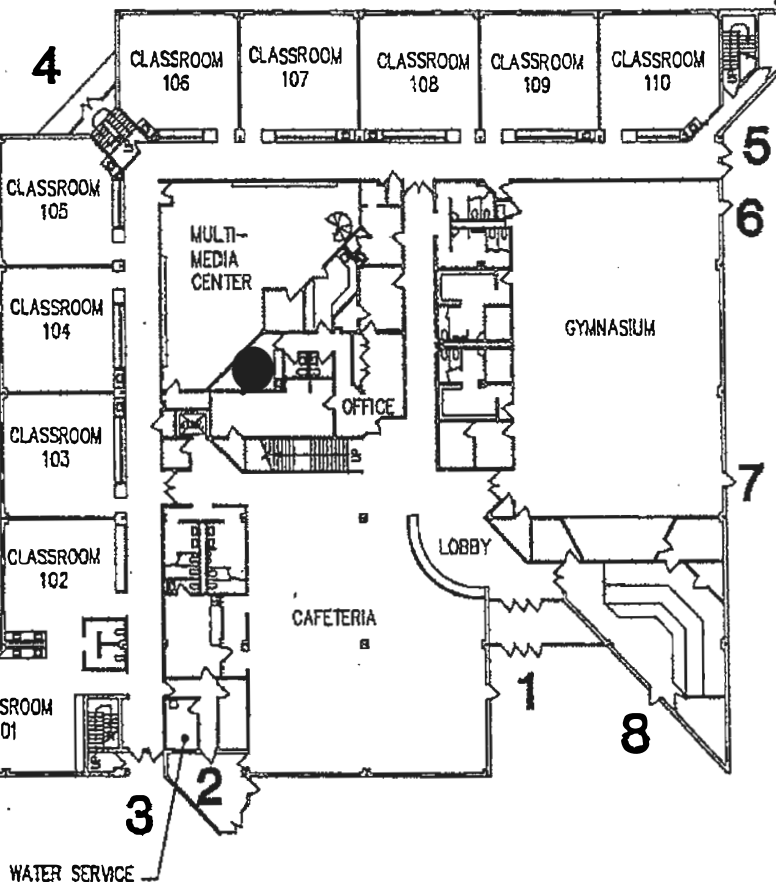




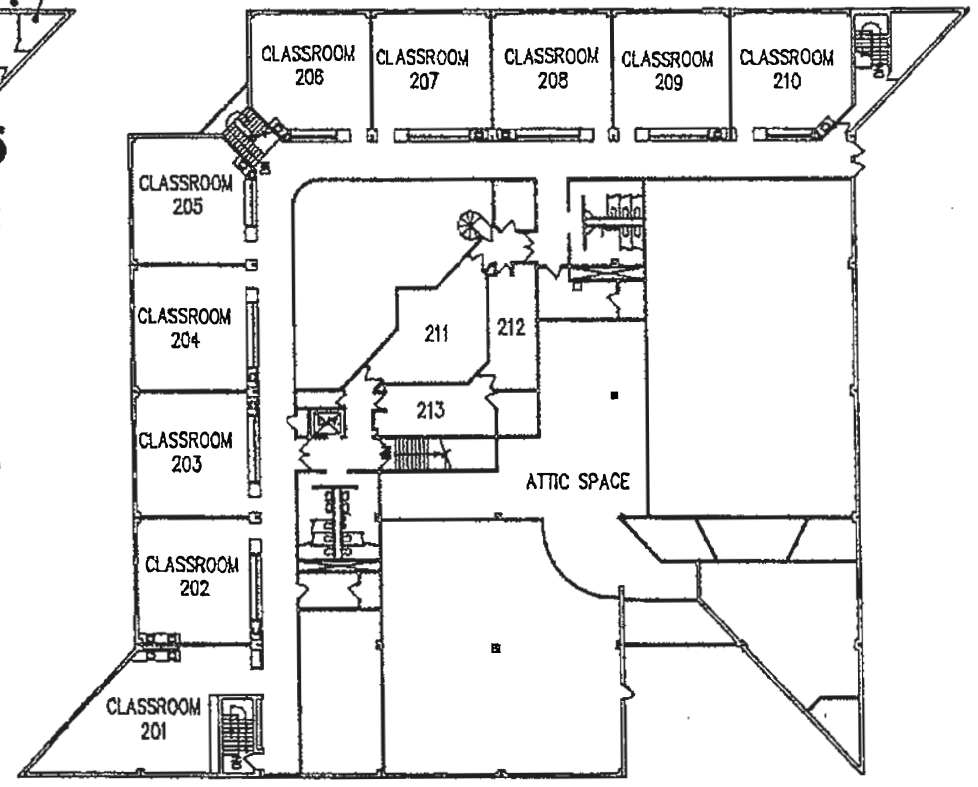




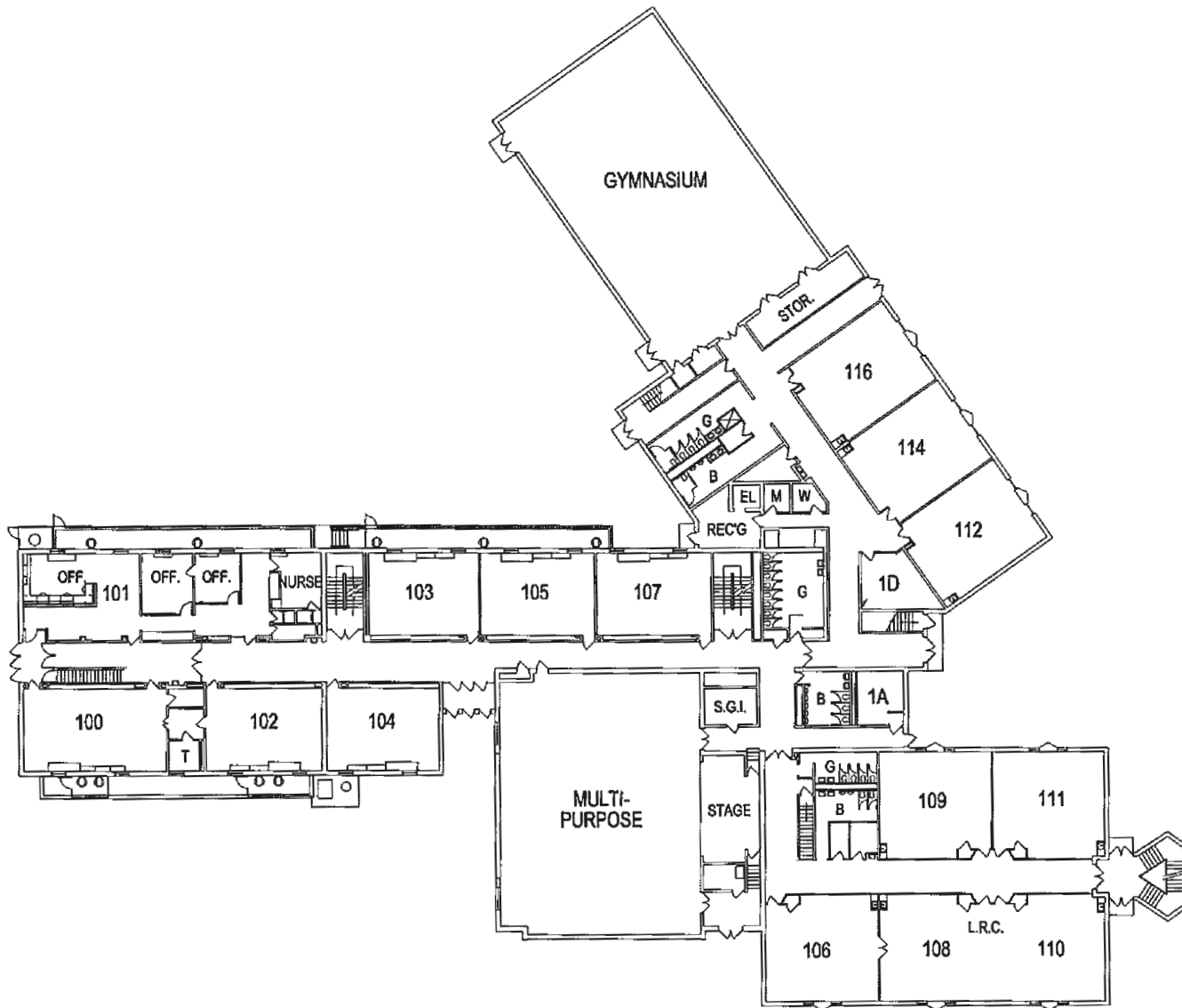
GAS SERVICE
ELECTRIC SERVICE



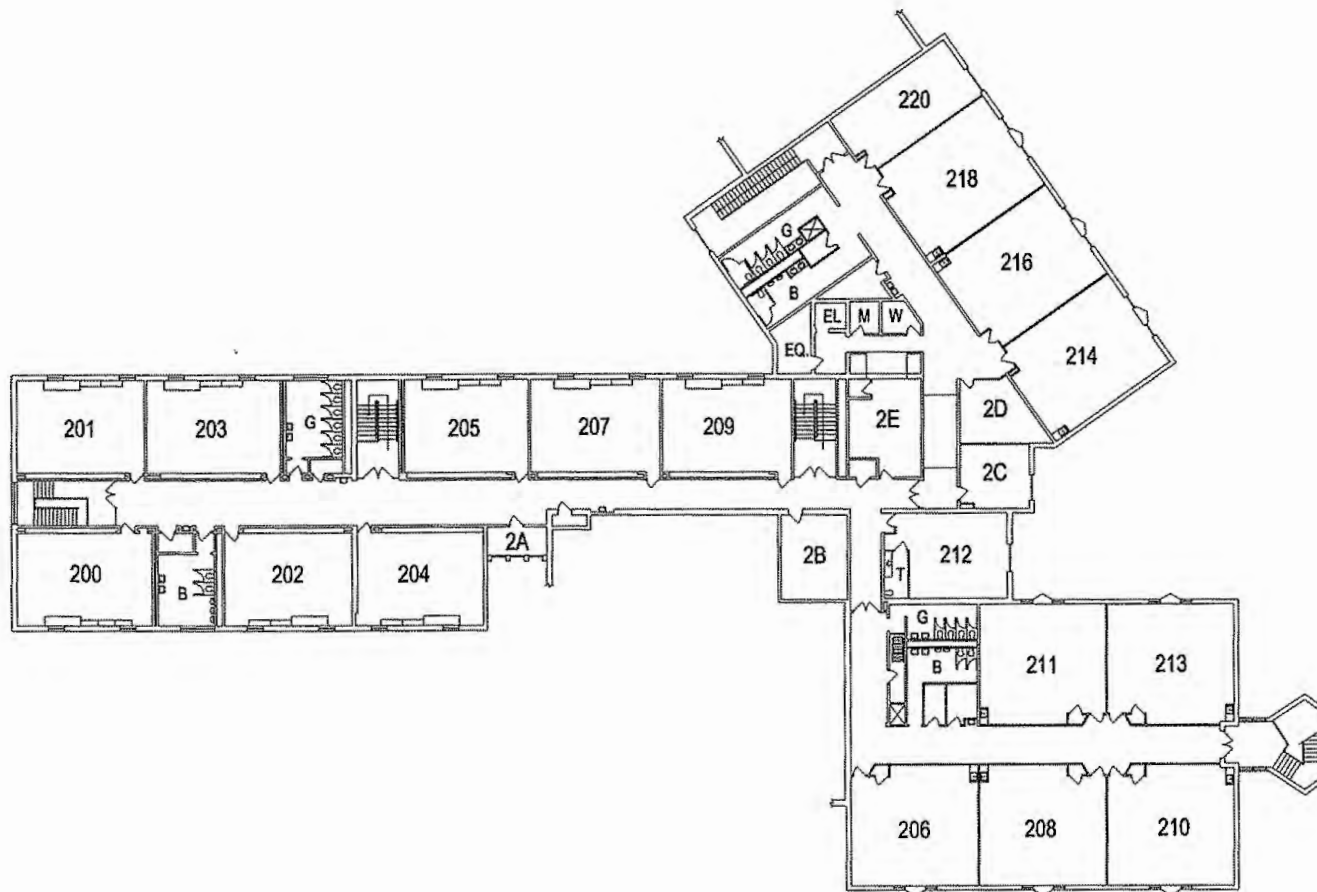
WATER SERVICE



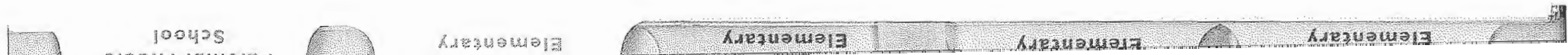
VILLAGE ELEMENTARY SCHOOL
880 NIPPERSINK ROAD
ROUND LAKE, IL 60073

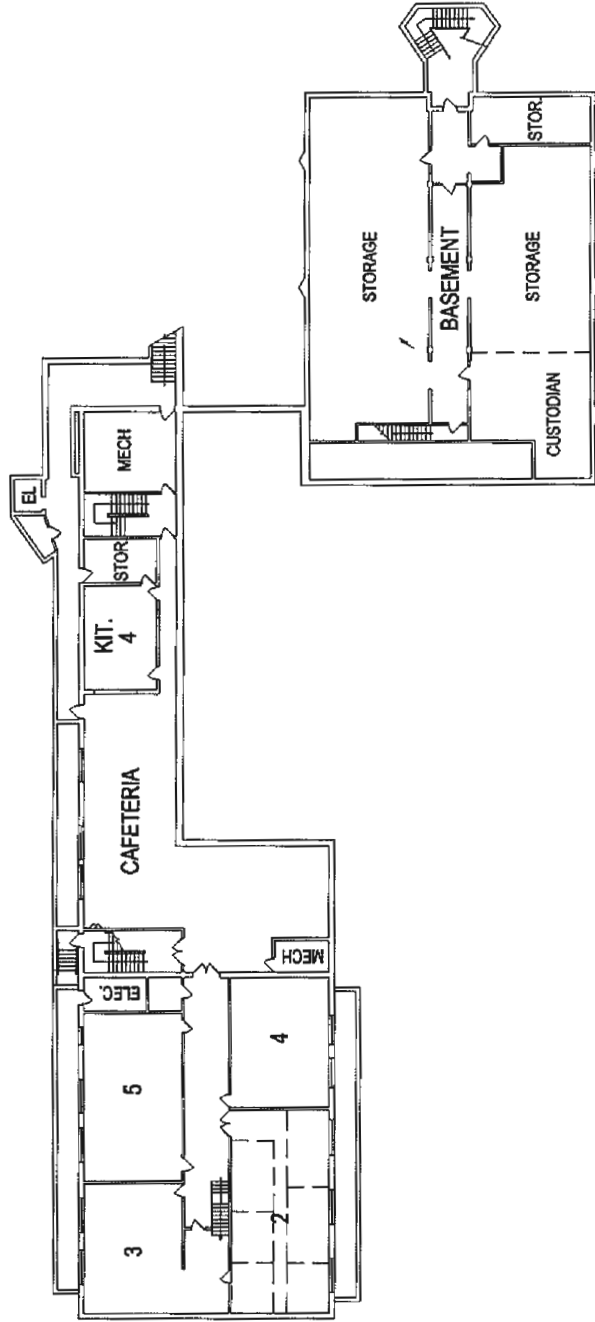


PLEVIK SCHOOL FIRST FLOOR PLAN



PLEVIAK SCHOOL SECOND FLOOR PLAN





PLEVIAK SCHOOL BASEMENT

