

Elementary School #18

Community Update



Stafford County
Public Schools

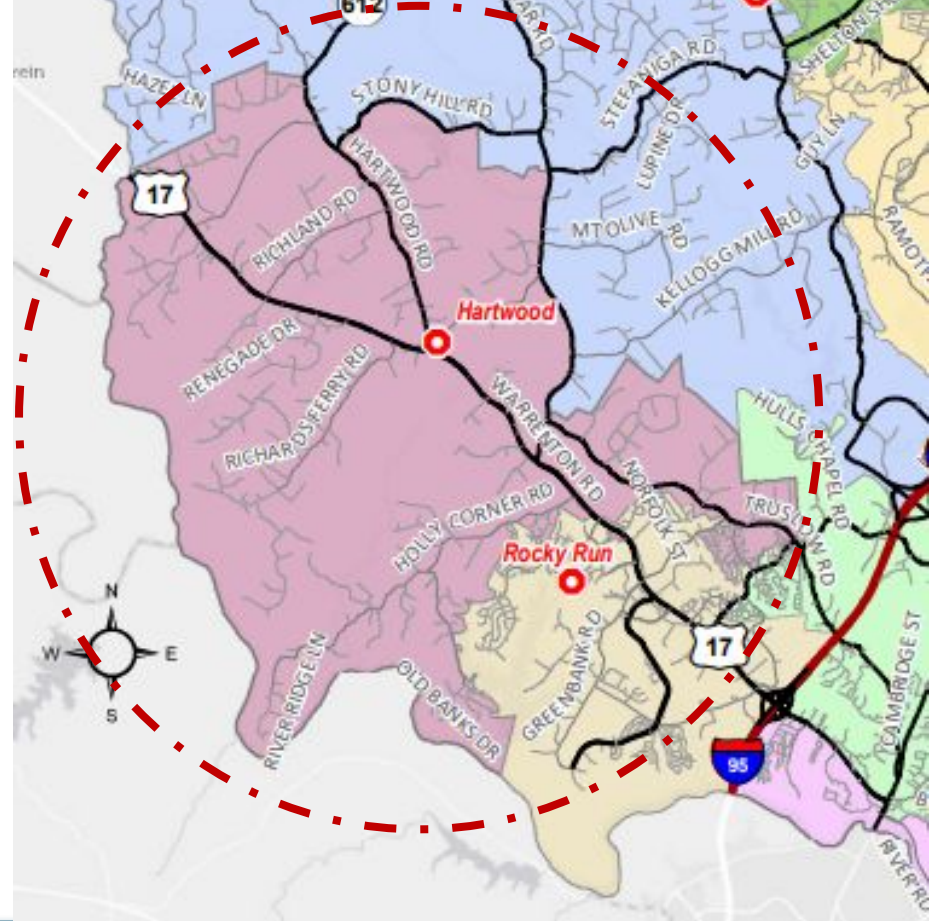
Inspire | Empower | Excel

#ElevateStafford

Community Meeting * January 30, 2023

Background

- The School Board Adopted FY 2024 Capital Improvement Plan identifies the need for a new Elementary School (ES#18) to open in August 2026
- This project includes the construction of the school building, parking lots, and outdoor playground as well a public street for access from Route 17 and a sanitary sewer connection
- Currently conducting due diligence studies to determine the suitability of the property for the proposed elementary school
- Over the next 10 years, the Hartwood area is projected to be one of the fastest growing areas in the County (i.e. Westlake)



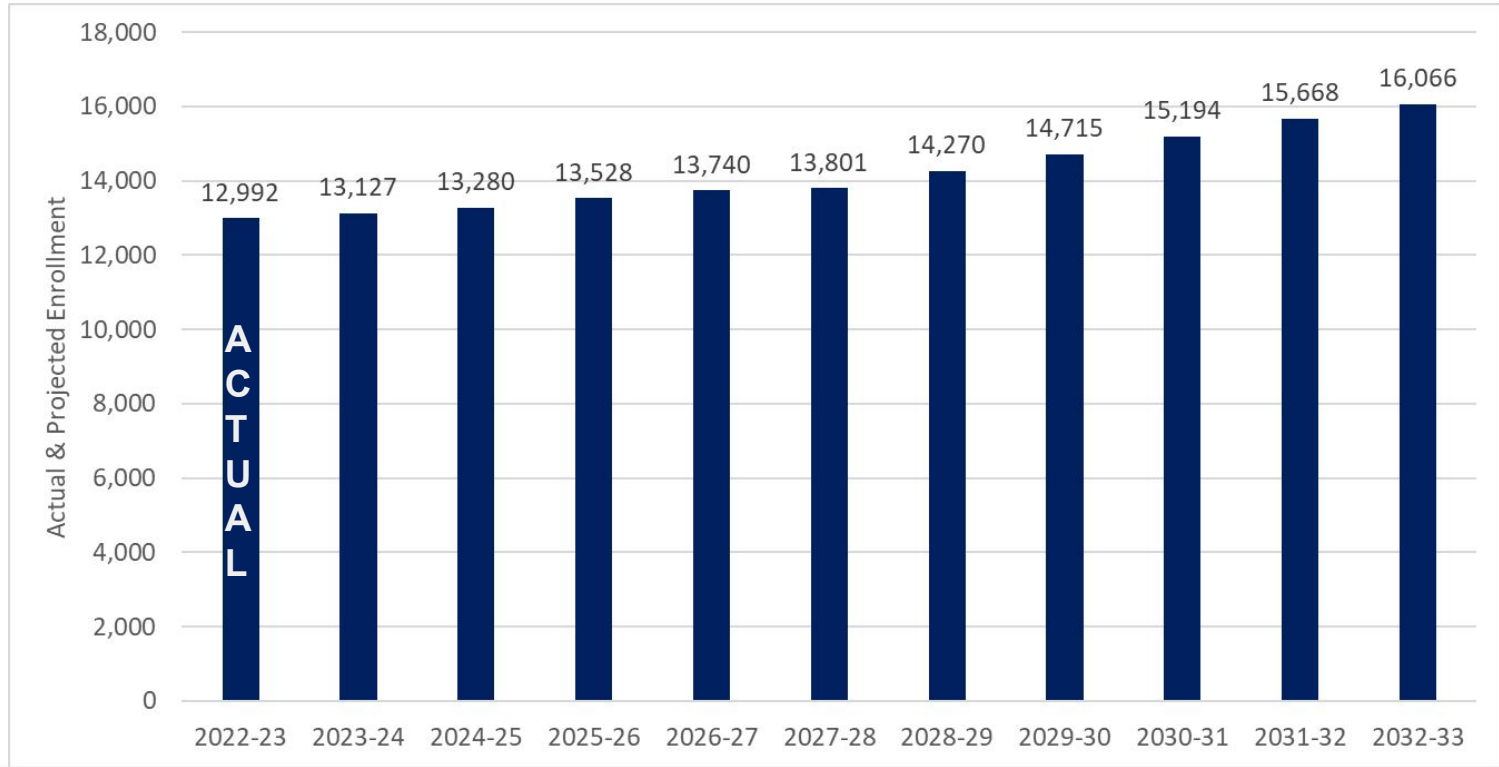
Update on Timeline & Funding

- As of January 17th, 2023, Elementary School #18 has **officially** been funded in the County's Capital Improvement Plan
 - Funded opening date of **August 2026**
 - Design funds NOW

- Board of Supervisors will still evaluate other projects in the Capital Improvement Plan for approval in **April 2023**
 - Which projects?
 - Timing of projects?



Actual & Projected Elementary Students through 2032



Elementary enrollment is slated to grow 800+ students in five years and nearly 3,100 students over the next decade

School Board Approved FY2024 CIP (Overdue List)

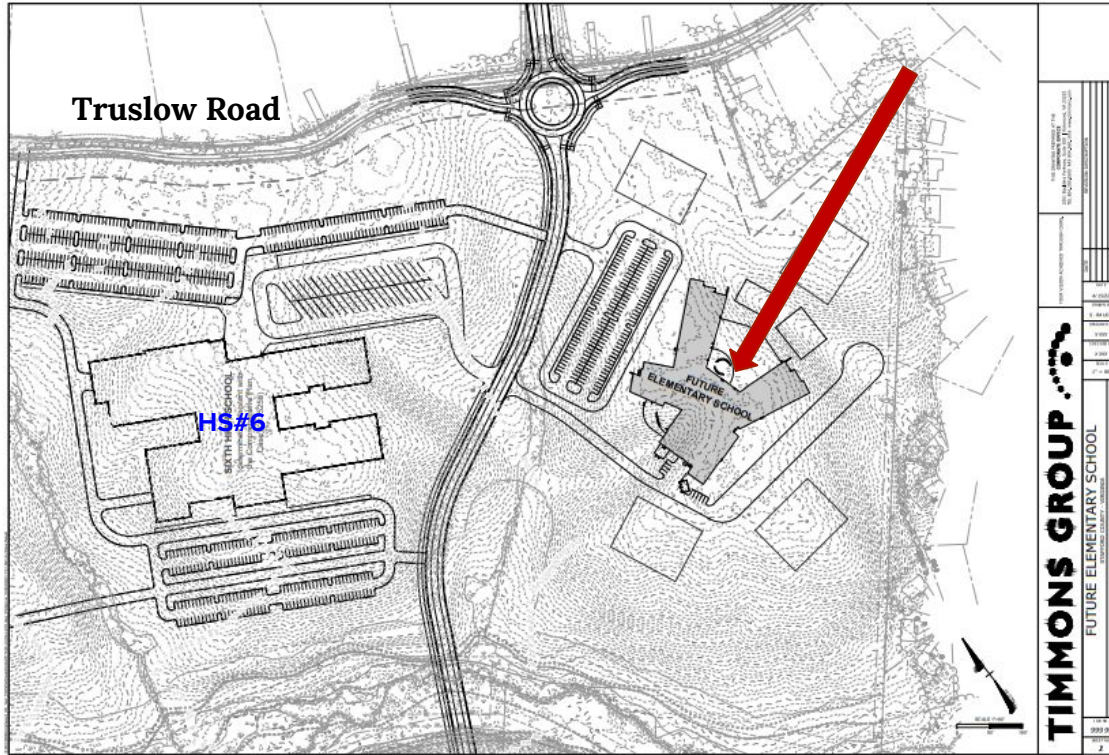
Priority Rank	Large Project	Seats Added*	Needed Opening Date	Staff Estimated Opening Cost	Project Status	Year Originally Proposed	Cost Avoidance¹
Approved	High School #6	2,150	August 2026	\$183,100,000	Land obtained Design underway	2008	-
Annual	Capital Maintenance Projects from 3R List	N/A	Annual	\$217,216,000	3R Projects completed each year	Annual	-
Overdue - 1	Elementary School #18	964	August 2026	\$58,830,000	Land TBD Prototype Design	2011	-
Overdue - 2	Elementary School #19	964	August 2026	\$61,920,000	Land TBD Prototype Design	2021	-
Overdue - 3	Hartwood Elementary Replacement	393	August 2027	\$64,069,000	Land TBD/ Prototype Design	2017	\$20,418,500
Overdue - 4	Drew Middle School Replacement	450	August 2027	\$89,900,000	Sites Identified Prototype Design	2022	\$38,286,000
Overdue - 5	Rising Star Replacement (Including Associated Programs & Additional Capacity)	212	August 2027	\$62,030,000	Sites Identified Planning Underway	2007	\$12,339,000
Overdue - 6	High School Only Bus Access Roads	N/A	August 2027	\$5,000,000	Land TBD/ Planning Underway	2022	-
Overdue - 7	Additional Fleet Services Facility	N/A	August 2027	\$11,600,000 ²	Land TBD/ Planning Underway	2007	TBD
Overdue - 8	North Stafford High School Fine Arts Wing Renovation	TBD	August 2027	\$8,360,000	Analysis update needed to add seats	2018	-



Stafford County Public Schools

Inspire | Empower | Excel

Proposed Elementary School Location



- Situated across from HS#6 on **34.7 acres**
- Design of school still under review
- Total square footage estimated to be **100,000+/- square feet**
- School will have an energy efficient and practical design
- Will serve approximately **964** Kindergarten through 5th grade students
- Primary access from **Route 17**
- School slated to open **Fall 2026**



Stafford County Public Schools

Inspire | Empower | Excel

Elementary School Prototype

- Prototype is a design that can be replicated on multiple sites
- Common practice for both public and private facilities
- The ideal prototype will:
 - Maximize classroom space and create efficient designs
 - Provide flexibility for education both now and in the future
 - Utilize affordable construction practices
 - Reduce the time of design and planning
 - Standardize maintenance and security practices
 - Reduce costs to taxpayers
 - Reflect the local community

The best schools are the ones that get built!



Stafford County Public Schools

Inspire | Empower | Excel

Timeline

Date	Event
March 2023	Final selection of A/E team and begin design
Summer 2023 - Spring 2024	Design development and construction plans
Spring 2024	Bid construction plans and select contractor
Spring/Summer 2024	Groundbreaking for Elementary School #18
Summer 2024 - Summer 2025	Establish Attendance Boundaries and Redistricting
Summer 2025	Hire Principal and support staff
Summer 2025 - Fall 2025	Select school colors and mascot
Winter/Spring 2026	Hire remaining staff for new school
Summer 2026	Ribbon cutting



Opportunities for Your Feedback

Date	Scheduled Event
Now through - April 1, 2023	Online Feedback form at www.staffordschools.net/ES18
January 18, 2023	Community Meeting#1, Rocky Run ES @6:30pm
January 30, 2023	Community Meeting#2, Gayle MS @ 6:30pm
Spring 2023	Planning Commission Public Hearing, Board Chambers, @ 6pm 1300 Courthouse Road, Stafford VA 22554
Summer and Fall 2023	Community meetings with design team to discuss design and layout
Summer 2024 through Fall 2025	Redistricting, school name, mascot, and colors



Questions

Jason Towery

Executive Director of Facilities
and Maintenance

*Department of Facilities Planning,
Design & Construction*

Email:

toweryjl@staffordschools.net

Phone: 540-658-6540

Lionel White

Director of Facilities Planning &
GIS

*Department of Facilities Planning,
Design & Construction*

Email:

whitela@staffordschools.net

Phone: 540-658-6543



Stafford County Public Schools

Inspire | Empower | Excel

Elementary School #18

Community Update



Stafford County
Public Schools

Inspire | Empower | Excel

#ElevateStafford

Community Meeting * January 30, 2023