

PrairieLand Pick up/Drop off Procedure

CARS: All vehicles will enter the front parking lot nearest Evergreen Village (SE corner of our property), pick up/drop off in the line along Safety Town all the way to the back of the gym (NW corner of our property), and exit the front parking lot nearest the bus lane (South side). Parents, please stay in your vehicle.

CAR DROP OFF 7:25-7:40: Pull forward as far as possible and **please have students ready to exit the vehicle** (with masks on) as soon as staff motion for them to exit. Please tell students to exit the right side of the vehicle and stay away from all cars when walking into the building. If staff are not present when you arrive after 7:40, you will need to bring your students to the front doors and ring the doorbell. Students cannot be dropped off prior to 7:25.

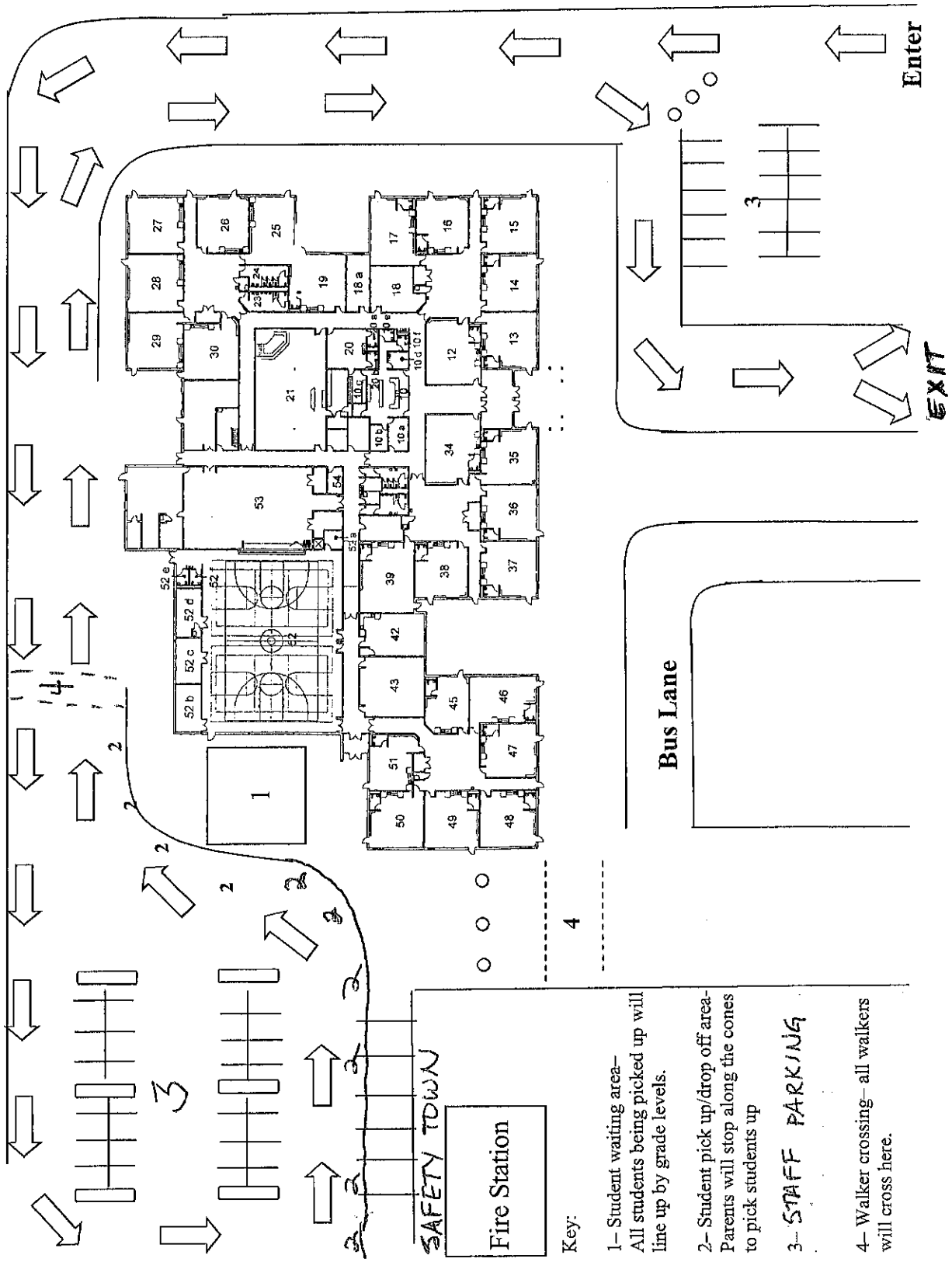
CAR PICK UP 2:30-2:45: A **sign with the names of the children you are picking up** is extremely helpful. In order to keep the line moving, if students aren't ready we will ask parents to pull into the basketball court area (North side of the gym). In case of rain/heavy snow, the students will be dismissed from the gym as parents arrive.

BUS RIDERS: Students who ride the bus will be dismissed out the front doors.

WALKERS/BIKE RIDERS: Students will cross at one of the two crosswalks (west side/Fire Station or north side/Carden Park). Parents who choose to walk with their students can drop off/meet just off PrairieLand property. Bike racks are located in the front of the school (SW corner) and students must walk their bikes while on school property. Parents, please be sure students arrive between 7:25-7:40 when staff are present to supervise.

PrairieLand Pick up/Drop off Procedure

CARDEN PARK



Key:

- 1- Student waiting area- All students being picked up will line up by grade levels.
- 2- Student pick up/drop off area- Parents will stop along the cones to pick students up
- 3- STAFF PARKING
- 4- Walker crossing- all walkers will cross here.