



Bond 2023: Room To Grow

Our Priorities

1. Provide the **best educational environment** that meets the needs of our students and staff.
2. Prepare the district for **future growth**.
3. Operate in a **fiscally responsible manner**, balancing student need with taxpayer support.



Stillwater
AREA PUBLIC SCHOOLS

Our district is projected to grow by about
1,000 students in the next 10 years

Bond
request
would do
3 things:

1

Provide more
learning
spaces for our
growing
enrollment

2

Replace
100-year-old
facilities

3

Improve safety
and security

Projects included in bond proposal:



Replacing Lake Elmo Elementary



Replacing Andersen Elementary



Expanding and remodeling Oak-Land Middle School



Improving safety and security district-wide and the high school



Stillwater
AREA PUBLIC SCHOOLS

Lake Elmo Elementary was originally built in 1920

Current capacity = 675 students



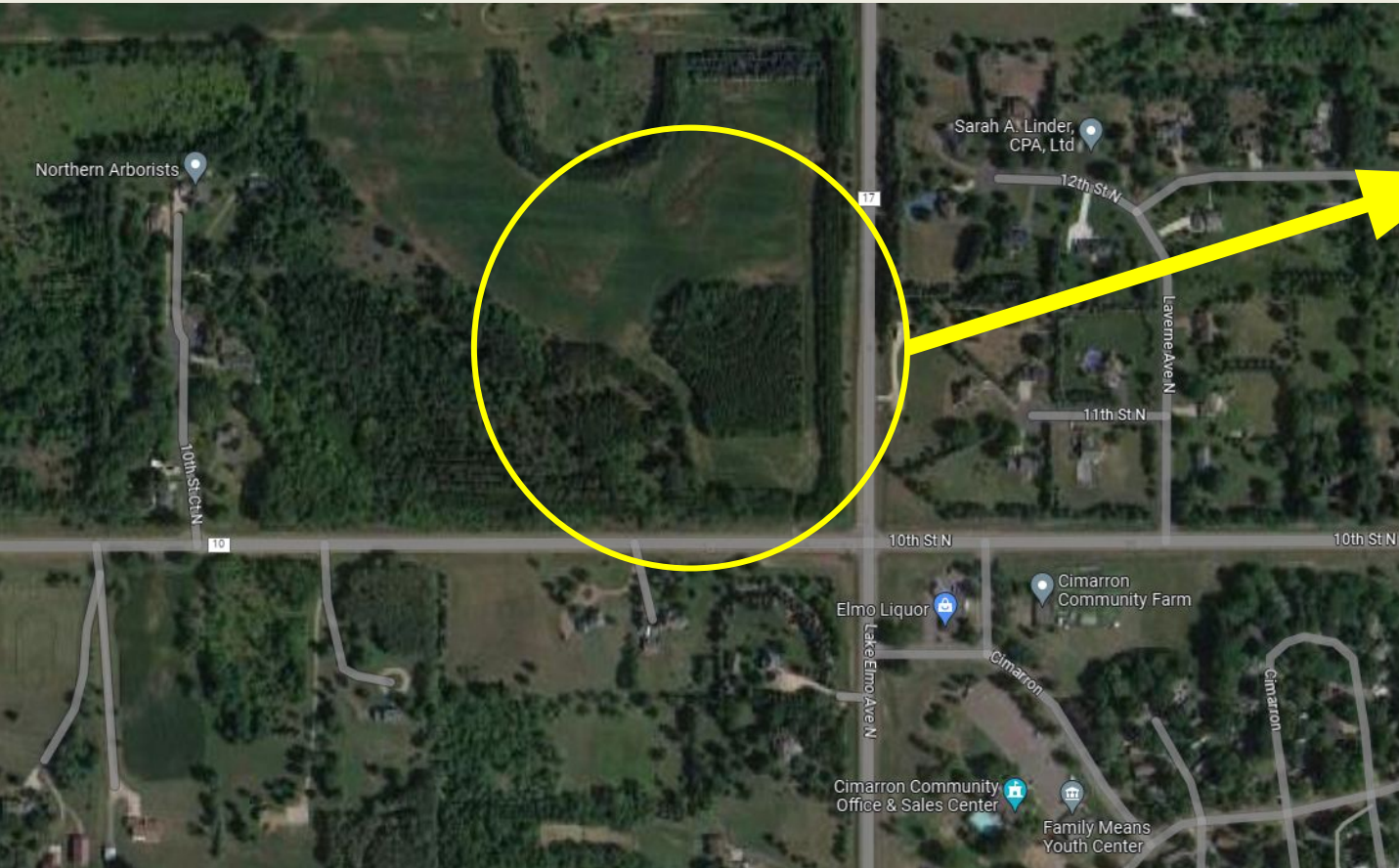
Opportunities with a new facility:

- Increased capacity to address future growth within the community (up to 1,100 students)
- Room to expand Amigos Unidos Dual Language Spanish Immersion
- Located further south; closer to population center
- Fully American Disabilities Act (ADA) accessible
- Designated specialist spaces for art, music, media, physical education
- Larger gymnasium, cafeteria and other community/gathering spaces
- Flexible learning spaces and modern learning environments
- Improved/safer traffic flow on campus and roadways



CONCEPT:
Lake Elmo Elementary
replacement

Proposed home of new Lake Elmo Elementary



47 acres

Corner of
Lake Elmo
Avenue and
10th St. N.
in Lake Elmo



Andersen Elementary
was originally built
in 1919

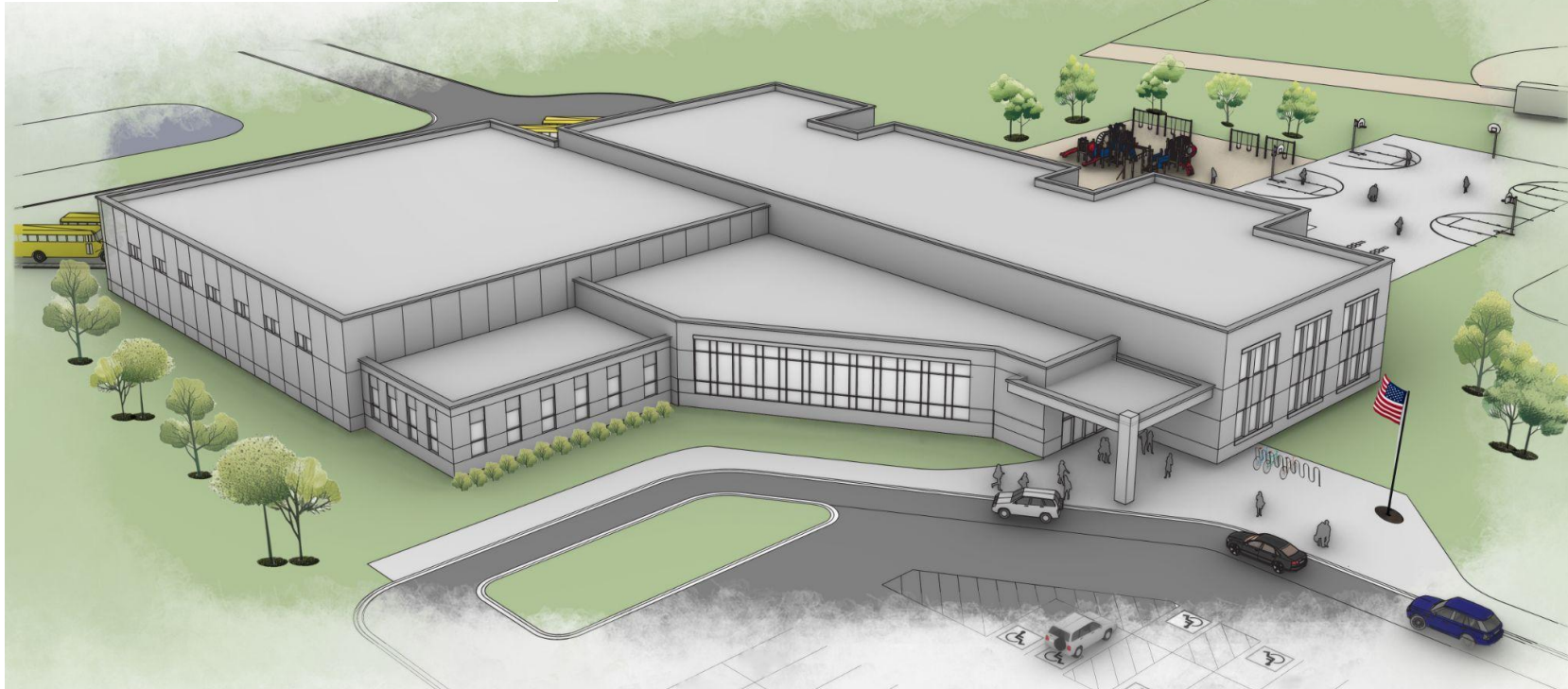
Current capacity = 375 students



Opportunities with a new facility:

- Increased capacity to address growth at Andersen, as well as relieve pressure at Afton-Lakeland (up to 600 students)
- Designated specialist spaces for art, music, media, physical education
- Flexible learning spaces and modern learning environments
- Access to green space, recreation/field spaces for community use
- Dedicated parking and improved/safer traffic flow on campus
- Staffing efficiencies and turnover of shared staff

CONCEPT: Andersen Elementary replacement



Proposed home of new Andersen Elementary

10 acres

Adjacent to Barker's
Alps Park

*Partner with city of Bayport for use of
the park's fields and green space*



SITE DIAGRAM

FOR ILLUSTRATIVE PURPOSES ONLY/ PROOF OF CONCEPT



Example of Modern Learning Spaces

Learning Commons (Media Center) at North Star Elementary, Hugo

Example of Modern Learning Spaces

Flexible classroom space at North Star Elementary, Hugo





Example of Modern Learning Spaces

Cafeteria at Brookview Elementary

Important Considerations

Minnesota Department of Education (MDE) guidelines identify an elementary school site is to be 10-15 usable acres, plus 1 acre for each 100 students of enrollment

- **Andersen Elementary School:** Per guidelines should have a 14-19 acre site
 - Currently sits on 1.4 acres
 - Playground is on 0.7 acres owned by city
- **Lake Elmo Elementary School:** Per guidelines should have 17-22 acre site
 - Currently sits on 12.8 acres



Stillwater
AREA PUBLIC SCHOOLS



Oak-Land Middle School

Current capacity = 1,095

Opportunities with addition:

- Expand building capacity to handle the increase in enrollment
- Improve the building's core functionality
 - Improve circulation
 - Appropriately sized media center
 - Creating common space in center of building
 - Improve proximity of programs in areas of the building
- Add gym space to provide adequate teaching spaces for physical education, as well as extracurricular activities and community use

Oak-Land Middle

COLOR KEY:

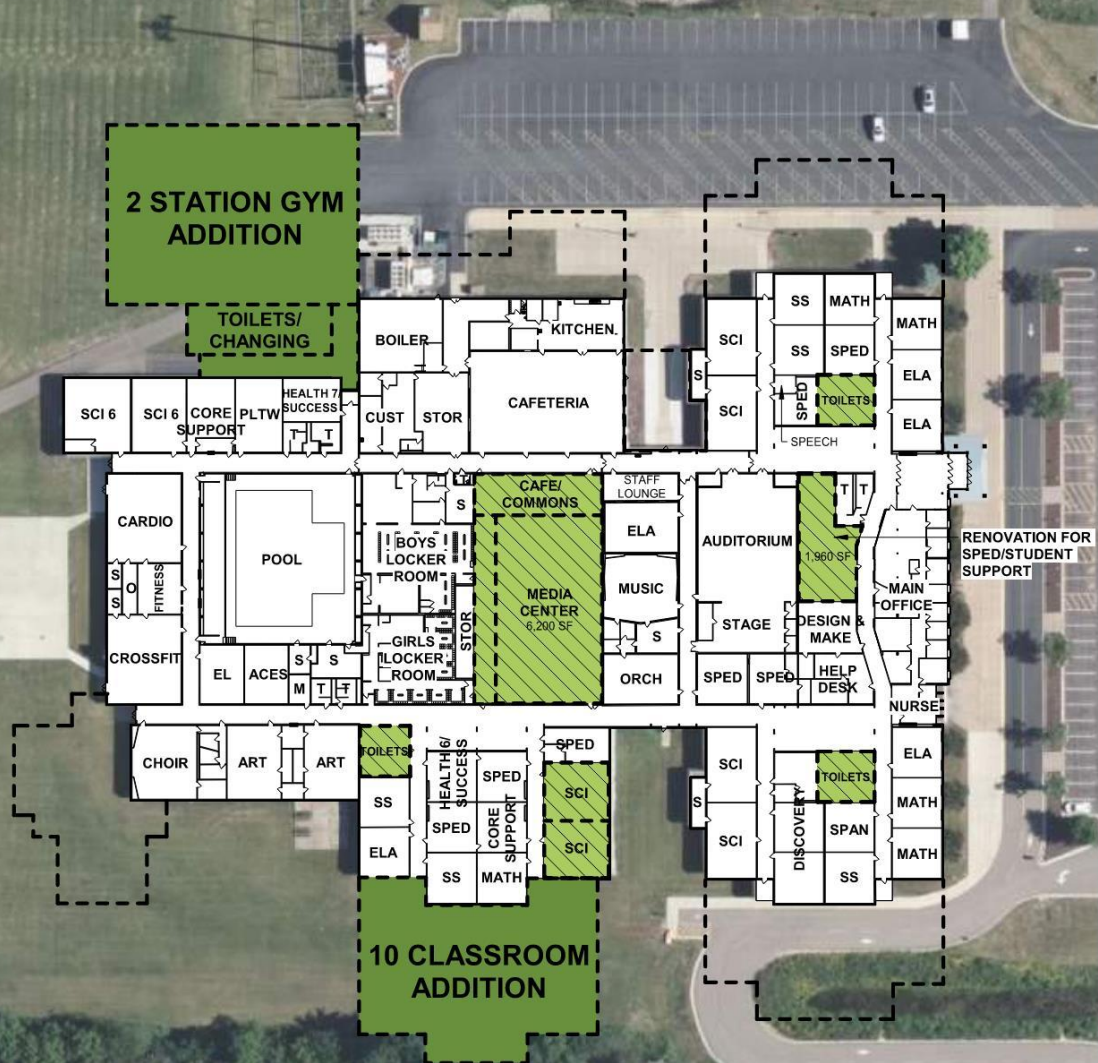
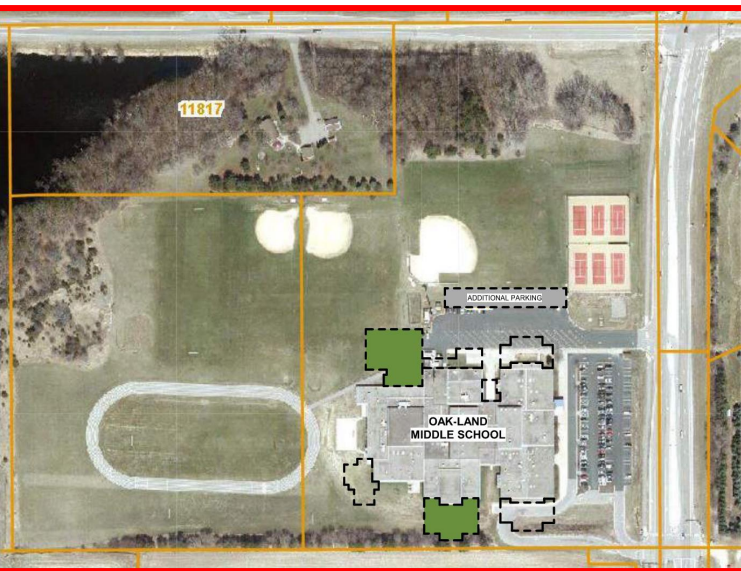


= BUILDING ADDITION



= RENOVATION OF EXISTING SPACE

--- = OUTLINE OF MASTER PLANNED ADDITION



Opportunities with remodeled entry:

- Create a larger space to meet the volume of students, staff, community that enter the building
 - Improve traffic flow
 - More space for waiting/visitors checking in
 - Meeting space within office area
- Improve security by providing for:
 - Additional supervision, backup staff



Districtwide Security Improvements

- Security strobe lights for high noise areas (music, cafeteria, gym, playground, etc.)
- Security glazing at additional points of entry and building separation (Most of district already done)



Stillwater
AREA PUBLIC SCHOOLS

Overview of Bond Request

Election Day is Nov. 7, 2023 (absentee and early voting begins Sept. 22)

Ballot Question:

- Replacing Lake Elmo Elementary School with a new building
- Replacing Andersen Elementary School with a new building
- Construction of additional classroom space and a new gymnasium at Oak-Land Middle School
- Safety and security improvements throughout district facilities, including a secured front entrance addition and remodel at Stillwater Area High School

Estimated Tax Impact of Bond

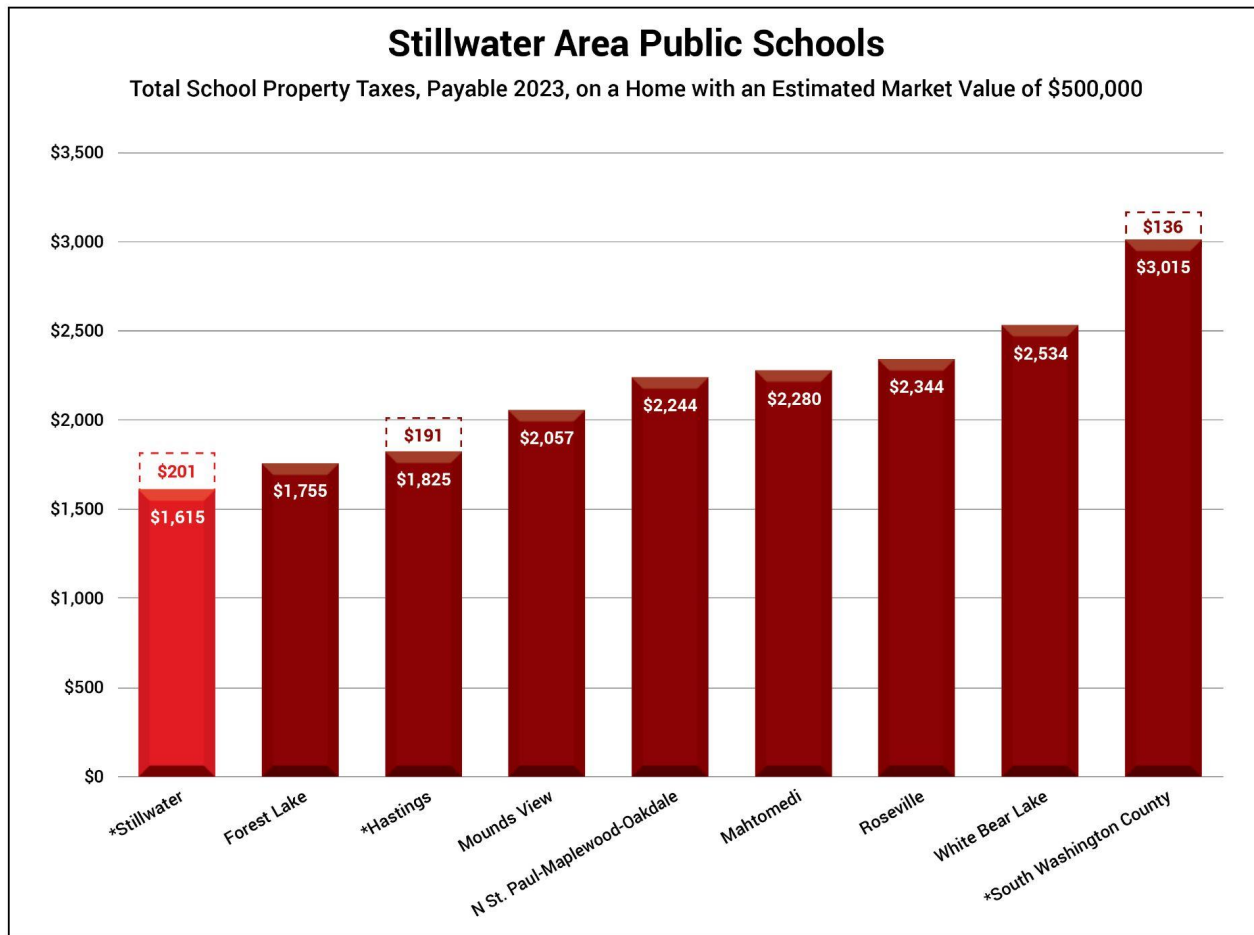


Scan the QR
code to estimate
your tax impact

Type of Property	Estimated Market Value	Estimated Change in Taxes Payable in 2024 *	
		Annual	Monthly
Residential Homestead	\$100,000	\$29	\$2
	200,000	73	6
	300,000	116	10
	400,000	160	13
	500,000	201	17
	600,000	251	21
	700,000	302	25
	800,000	352	29
	900,000	402	34
	1,000,000	452	38
Residential Non-Homestead Single Unit	\$100,000	\$40	\$3
	250,000	101	8
	500,000	201	17
	750,000	327	27
	1,000,000	452	38
Residential Non-Homestead Multi Unit and Apartments	\$250,000	\$126	\$11
	500,000	251	21
	750,000	377	31
	1,000,000	503	42
	2,000,000	1,005	84
Commercial/Industrial #	\$250,000	\$105	\$9
	500,000	228	19
	750,000	352	29
	1,000,000	475	40
	2,000,000	969	81

\$17 per
month for
median-
priced home

Stillwater Area Public School residents pay less in school taxes than those in comparable districts.



* Districts holding referendums in Nov 2023. Total projected increase if approved by voters.

Source: Pay 23 School Tax Report

What happens if the bond doesn't pass?

- Identified safety and security improvements would not be addressed.
- Projected enrollment growth would lead to significant overcrowding at Andersen, Afton-Lakeland, Lake Elmo and Oak-Land Middle School.
 - Options to address overcrowding may include higher class sizes and significant boundary adjustments - which would likely impact students in all of our elementary schools.
- We will continue to have inadequate learning spaces, operational challenges and facility maintenance needs with our two 100-year-old buildings, Andersen and Lake Elmo.



Stillwater
AREA PUBLIC SCHOOLS





**Learn
more**

stillwaterschools.org/Bond