

Annual Report 2018-2019



Cover Story

This lively motif in the school's signature blue represents the various outreach programs that drive JIS Peduli and its mission to help those in need. From school clubs dedicated to improving the education of underprivileged children, to organizations striving to empower women living in rural areas, JIS Peduli has created a caring community that aims to make our world a better place.

Contents

5

Message from Board Chairperson

Funded Projects

- 14 YUM Green Thumbs
- 16 Roshan Health
Screening Fund
- 18 ESP Riau Indigenous
Communities Service
Project



7

What is
JIS Peduli?

11

Who is
JIS Peduli?

13

Service Partners
& Clubs

22

The JIS Peduli
Fund

26

Giving to
JIS Peduli

30

How to Apply





Message from Board Chairperson

JIS Peduli was created in 2004 as a means of coordinating and evaluating the effectiveness of our services to the community. Today, it embodies the principles instilled in a JIS Komodo Dragon. It is a core pillar of a lifetime of purpose that drives our JIS community to be the best members of society that they can be.

JIS has always challenged students to be responsible world citizens and global leaders, and the very reason why choosing to create a positive impact through all our actions has become a conscious lifestyle choice.

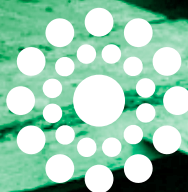
The JIS Peduli board includes the headmaster, vice headmaster, chief financial officers, representatives from each campus, a student representative, as well as the heads of our service programs. In the last four years as chair of JIS Peduli, I have had the pleasure of witnessing students as young as 13 years old delivering their service projects not only with confidence, passion and commitment, but with a level of diligence and cultural sensitivity that one would expect from a trained professional.

We thank our donors who have made it possible to encourage our students to create bigger and positive impacts in Indonesia.

JIS Peduli's approval process for the funding of proposed service activities requires our students to put forth thoughtful proposals that consider what positive impacts will result and how this can be sustainable. Not only does this help us ensure our reputation as a generous yet pragmatic member of the international community, it also requires our students to take an objective look at the service(s) they have chosen, while at the same time developing management and project development skillsets.

This school year, I would like to encourage everyone in the JIS community to be involved and leave your service footprint for us to look back upon as we continue to deliver our mission for at least the next 100 years to come.

Derice A. Sumantri
JIS Peduli Chairperson
Class of '97



What is JIS Peduli?

Strengthening our ties to Indonesia through service

JIS Peduli is the school wide service arm of JIS. It was the devastation wrought by the tsunami of 2004 that provided the impetus for the development of the organization. JIS Peduli builds on all that is good about JIS and acknowledges it's 66 plus years of giving.

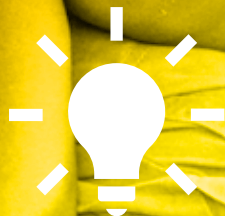
Of particular interest is how we support student-initiated projects and our service

partners. We are interested in funding "big ideas." The intention is that our support will help participants to focus on the quality of the service experience and less on fundraising activities. We have developed an application process whereby those with ideas present them at our quarterly board meetings. This annual report is a reflection of the projects JIS Peduli has supported.

Our Mission To strengthen our ties
to Indonesia through service

We Value

- Compassion
- Humility
- Tolerance
- Social justice
- Sustainable solutions



The Four Pillars



Community Projects and Engagement

Provide funding and logistical support for community projects that meet certain criteria



Disaster Relief

Coordinate JIS's response to major disasters in Indonesia



Leadership

Through its processes and protocols, model good philanthropic practices



Communication

Promote and celebrate service at JIS



KERJA
BERSAMA
BERSAMA SAMA

KERJA
BERSAMA
BERSAMA SAMA

KERJA
BERSAMA
BERSAMA SAMA



Who is JIS Peduli?

The JIS Peduli Board 2018 - 2019

The JIS Peduli Board members represent various aspects of the JIS community. They are teachers, administrators, alumni, parents and students.

President, Alumni Representative	: Derice Sumantri
Head of School	: Dr. Tarek Razik, Ed.D
Deputy Head of School	: Lauren Pool
Chief Financial Officer and Operations	: Sinta Sirait
Communications Manager	: Dyah Lestarina
High School Service Learning & CAS Coordinator	: Anne Andrews
Middle School Service Learning Coordinator	: Serena McMahon
Elementary School (Pondok Indah)	
Service Learning Coordinator	: Carla Korte
Elementary School (Pattimura)	
Service Learning Coordinator	: Jason Graham & Jeremy Fitzpatrick
Parent Representative	: Sara Bretthauer
High School Student Representative	: Cheryl Aneal Melwani
	Delbert Mear III
Middle School Student Representative	: Annika Rachmat

For more information

Website	: www.jisedu.or.id/jispeduli/
Telephone	: (021) 50989555 ext 72960



Service Partners & Clubs

Opportunities for students, faculty and the JIS community to serve humanitarian and environmental causes. Below is the list of JIS Peduli Service Partners & Clubs 2018 - 2019:

Abs-olutely Active
Amal Mulia Smile Club
Animal Welfare Club (JAAN) Club
Alternative Technology Club
Art Service Club
Badminton Service Club
Bhakti Luhur
Bust a Move
Bye Bye Plastic Bags
Code Red
Conquer Cancer Club
Cooking Connection Club
C.R.Y. Child Rights and You
Do It Yourself
DS Kids Club
Emmanuel's Club
Engineering: Off-Grid
Enigma Puzzle Club
Food of Love
Friday School
Gerakan Kepedulian Club (GK Club)
Global Education for Tomorrow (GEFT)
Global Issues Network (GIN)
Good Giving Club
Guitar Service Club
Habitat for Humanity
House of Hope
Human Rights Activists
Justice for the Innocent

Scrapbook Service Club
Soccer Service Club
KKI Microfinance Club
Kasih Mandiri Club
Marine Conservation Club
Medical Mission Club
NXT GEN (Robotics)
Plugged In
Project Earth
Puspita Community Project
Rainbow Club
Rawamangun Club
Ronald McDonald House Charities (RMHC)
Roshan Club
Science Service Club
Service Climbing Club
Smile Train
Swim for Life
Streetizens
Strings In Action
Take a Bow
Tech Service Club
Unite for Children Foundation (UCF)
Urban Gardening Club
Voice of Music
Womenesia
XSProject Library
XSProject Club
Youth Athletics Service Programme

YUM Green Thumbs

Tell us about your project?

Our proposal was to get funding for our club. We needed money so that we could transport the YUM farmers, pay for their meals when they were at JIS, give them a donation to help support their organization, and get five months worth of provisions of soil, seedlings and pest control materials. Local students from the Panti Asuhan Abigail orphanage and JIS students benefitted from this project by learning how to farm organically and sustainably. Some of the food that was harvested was taken home by the JIS students, but most was given to the Abigail students, which helped feed them. Involved in this project were seven JIS students, six Abigail students, and one JIS Teacher (Ms. Merrigan).



Did you achieve your goals?

We did achieve our goals. We wanted to learn and also teach the Abigail students how to farm organically. We learned how to make organic pest control and how to take care of plants. We also harvested many plants, which was something we were, and are still, very proud of.

What challenges did you face?

The biggest challenge was the weather. There were a few days when it was raining very heavily and on some days there was thunder. When the weather was like this, we couldn't go out to the garden. We tried to make the best of





our time by still learning about what we were supposed to but in the classroom. We also used his time to bond more with the students from Abigail. Another challenge was the language barrier because the Abigail students only spoke Indonesian and the JIS students didn't speak Indonesian. But we were able to communicate anyway because one YUM farmer spoke both English and Indonesian. Another way we communicated was by showing the Abigail students how to do the activities.



Let us know if you have any plans for the future.

We are hoping to have this club next year again and hope to get funding for that as well. We wouldn't mind completing another survey for that if needed.



15

Please tell us about your experience with the application and funding process. How could we improve?

The application process was very efficient and we weren't confused about what we needed to do. I don't think that anything needs to be improved because the process was pretty straightforward and not difficult.

How did you originally hear about JIS Peduli?

Ms. Merrigan told our club about how JIS Peduli could help us fund our project, so we presented to JIS Peduli and got our funding.

Roshan Health Screening Fund

Tell us about your project?

Recently, a student at Roshan Learning Center tested positive for Tuberculosis (TB) and as a result, classes were — and still are — canceled. Since TB is highly contagious, the Roshan staff want to have TB screenings for all of the students (pre-school through adult students) to ensure that none of them are TB positive. For the students living in shelters, the United Nations High Commissioner of Refugees (UNHCR) and Church World Service (CWS) will cover the costs.

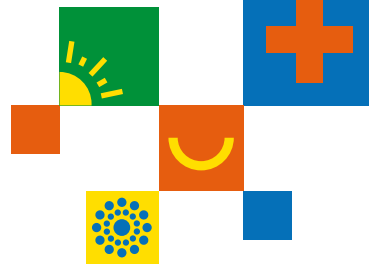
However, families and individuals from pre-school to high school (up to 18 years old) not living in shelters have to pay for the TB screening themselves.

This is a financial burden for those individuals and Roshan has used its own funds to cover the costs. For the adult students, Roshan is paying Rp 310,000 (US\$21.76) of the Rp 410,000 cost. For students from pre-school through high school, Roshan is paying the full price. In total, Roshan is spending Rp 21 million, comprising Rp 16 million for health screenings and Rp 5 million transportation of students to local clinics and hospitals.



As Roshan is using its own money set aside for programming, the funds need to be replenished as soon as possible. Therefore, our JIS Roshan club proposed this to the JIS Peduli group in the hopes that it would grant us some funds — and luckily, it did.





Let us know if you have any plans for the future.

Since I'm graduating soon, I'm not going to be able to participate in JIS Roshan. Therefore, I hope that in the coming years, the club will continue to help Roshan both academically and financially when needed.

Please tell us about your experience with the application and funding process. How could we improve?

The whole process ran very smoothly and I felt very welcome.

How did you originally hear about JIS Peduli?

My mom, Sara Bretthauer.

The students, teachers, and Roshan as a whole, benefited from this project. Due to the replenishment of its general funds, Roshan is now able to put that money toward programming.

Did you achieve your goals?

We did achieve our goals.

What challenges did you face?

Stage fright. However, we feel our presentation was well received.



ESP Riau Indigenous Communities Service Project

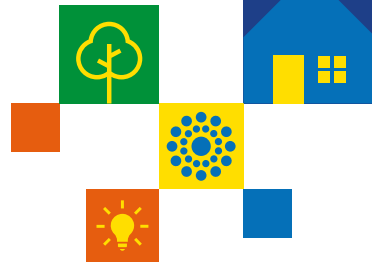
18



Tell us about your project?

This project is a part of the MS ESP Riau Islands Indigenous Communities program. It benefits isolated communities living in the Melayu/Riau Islands and changes year to year depending on the needs of the communities we visit. Twenty students and three teachers were involved with this building project. We were asked to build a staircase from the village to the elementary school.





Did you achieve your goals?

Yes. The students learned how to mix cement from scratch, use tools like shovels, wheelbarrows, hoes, etc. and pour cement into the wooden frames created to make the stairs.

What challenges did you face?

Rainy weather interfered with the work. After we had completed our work, a severe rainstorm came through and washed away the top layers of our cement before it had dried.

Let us know if you have any plans for the future.

The community service component of this specific ESP trip is an integral part of the curriculum and I hope it will be an on-going project after I leave this year.

Please tell us about your experience with the application and funding process. How could we improve?

I thought it was a great experience for the students to present to the Board.

How did you originally hear about JIS Peduli?

I've known about JIS Peduli's great work for over a decade.



Logistical Support

JIS Peduli & Service Learning

2018 - 2019 School Year

At JIS we want the student leaders of our service clubs to focus on the quality of the engagement and depth of the experience. To that end, JIS provides logistical support for service and service learning activities across all divisions and all campuses.

This support includes:

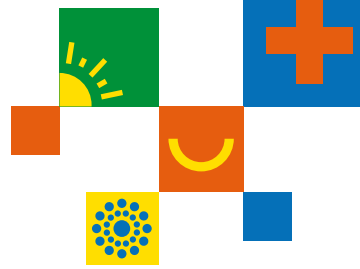
- Arranging transportation
- Materials acquisition
- Making connections to service partners
- Online and print communications
- Project funding
- Disaster relief and more

It's a big school, so it's a big job!
Just drop by on a Saturday morning
and see the line of buses headed out

on service trips, or come to the campus after 3:00 PM on weekdays (especially Tuesday) and you will see dozens (sometimes hundreds) of local children engaging in a variety of sports, fitness, creative and academic activities led by JIS students. It's a two-way street and JIS students get as much, if not more, out of the experience as anyone else.

JIS Peduli loves to support big ideas! If students find a need, whether it's building a house or facilitating a social entrepreneurship program, they know that can apply to JIS Peduli for funding. The bottom line is that JIS Peduli aims to provide the kind of support that enables good things to happen!





21

Contact Information
(021) 50989555 ext 72960
www.jisedu.or.id/jispeduli/

The JIS Peduli administrative staff are always eager to help! They are here to facilitate good ideas by making connections to the community and arranging logistics. The team supports all divisions, JIS Peduli parents and the JIS community.

The JIS Peduli Fund

Financial Summary 2017-2018 School Year

JIS students are articulate and passionate about what they do. In order to qualify for a loan or grant for their service club, they must submit a formal funding applications and present it to the JIS Peduli Board.

The fund always needs to be replenished. Any individual, organization or company that would like to donate can find information on how to do this on the next page under “Giving to JIS Peduli”.



Every year we produce an annual report so that we are accountable to our stakeholders. We believe in the valuable work of our students and service partners and see the positive impact that their efforts have on the recipients. Even more importantly, we see how this helps our students to truly live up to the JIS vision of being passionate, inquisitive and creative individuals - learning to be best for the world.

The balance of the fund is used to support student-initiated service projects. JIS students present their projects to the JIS Peduli Board.



JIS Peduli	Amount	
	IDR	USD
Opening Balance	879.036.501	\$237.554
Disbursed to Projects:		
Internal fund transfer	-100.000.000	
Yayasan Akhiruz Zaman	-46.175.000	
Roshan Learning Center	-30.210.000	
MS YUM Green Thumbs	-8.740.000	
Lombok Trip	-1.177.100	
MS/HS GK Children for FFF	-11.345.000	
MS ESP	-10.000.000	
Food & Snacks for Service Learning	-177.782.560	
Transportation for Service Learning	-652.434.120	
Annual Report	-22.044.000	
IS Peduli Event	-10.464.770	
Food & Snacks	-396.000	
Bank Charges	-115.000	
Change Currency	500.782.826	\$(35.632)
Donations received:		
PT Sodexo Indonesia	261.304.414	
Swimming Gr.9	226.101.000	
HS Admin		\$7.500
Interest earned	54.487.729	
Miscellaneous	26.553.895	\$1.806
Account Balance	877.382.815	\$211.228
Rate Rp. 14,165	\$61.940	

Giving to JIS Peduli



If you would like to support JIS Peduli, donations can be directed to the Business Office Cashier or transferred to the following bank accounts:

Beneficiary Name	: Jakarta International School Safekeeping Fund
Bank Name	: PT. Bank ANZ Indonesia
Bank Address	: ANZ Tower 8th Floor, Jl. Jend. Sudirman Kav. 33A Jakarta10220
Account No	: 38564-01-01-00001 IDR
Reference	: Sender's Name / B035261- JIS Cares



Helping Hands

SW Service Learning Community Liaison Reflections 2018-2019

JIS is dedicated to supporting the innovative ideas, passionate endeavors, and unwavering commitment of its students, teachers, and parents.

A great time to get to know the vast range of activities we plan and carry out together as a community is the Parent-Teacher Association (PTA) Community Information Day, when new parents have the chance to become acquainted with both each other and returning families.

The PTA has continued to play a tremendous role in helping JIS students with service learning projects and social causes, including through JIS Peduli.

Service Learning at JIS

High School

It is a JIS graduation requirement that all High School students participate in service activities. The students' choice and voice are essential in choosing their personal service connection and the extent of their commitment.

In 2018-19, High School led over 40 humanitarian and environmental service clubs. In addition to the regular sessions with local service partners,

there were some special highlights:

- High School Environment Day: Project Earth and the Bye-Bye Plastic Bags Clubs engaged students in interactive activities focused on critical environmental issues.
- The Living Wall: Presentations by Rachel House Foundation with the Rachel House club to inform students about palliative care.
- Hair-For-You: A joint fundraising project by the Conquer Cancer Club with British School Jakarta (BSJ) students to raise funds for the children's ward at Dharmais Hospital.
- Grant-A-Wish Foundation: In collaboration with Take-A-Bow Club, children with serious and terminal illnesses enjoyed a Frozen-themed celebration.





- Middle School & High School Strings-In-Action Concert: In collaboration with Pondok Taruna orphanage.
- Tri-M Service Concerts: Collaborative music and dance concerts with local children and service clubs.
- Annual Health Screening: High School medical clubs supported the Alfa-Omega Organization in checking the physical and dental health of 75 children from two of our partner orphanages.
- Palu Gift Boxes: The High School community donated various items (toys, clothes, personal care products) to fill 160 care packages for children impacted by the earthquake and tsunami in Palu, Central Sulawesi.
- Students participated in regular weekend mangrove planting trips with the Indonesian Mangrove Restoration Foundation (IMARF) and help build houses with Habitat for Humanity.

- Local (four days at Cipanas) and global (10 days in Tanzania) Service Trips took place during the October term break.
- LEAD Week: All Grade 10 students visited JIS service partners for two days of interactive activities.

The Highlights:

- JIS Environmental Days (September 2018)
- PIE Green Dragons with XSProjects
- High School ISTA Jakarta Festival with Sekolah Musika (November 2018)
- AMIS & Strings in Actions Pondok Taruna performance (January 2019)
- Justice for the Innocent: Chili Cook-Off
- At-Your-Service Garage Sales
- MS ISTA Jakarta Festival with KDM (April 2019)
- HS Lead Week (April 2019)
- Service Partners fairs at every IASAS championships/sports exchanges

Middle School

The Middle School Service-Learning program is designed to foster the characteristics of Responsible World Citizens through a range of outreach activities that are integrated into the Middle School curriculum. They encourage students to become involved in community service, act as stewards

of the environment, show compassion and empathy, and appreciate cultural diversity while showing courage and developing a relationship with Indonesia. We believe Service Learning should be embedded in student learning experiences through classes.

After-school and Curricular Ties Highlights

- **Cikananga Wildlife Centre**

Twice a year, 10 to 15 Middle School students volunteer for a weekend at the Cikananga Wildlife Centre. Participation is completely voluntary. They spent the weekend living at the center, cleaning cages, preparing meals and enrichment toys for the animals rescued by the center, and learned about issues facing the wildlife of Indonesia.

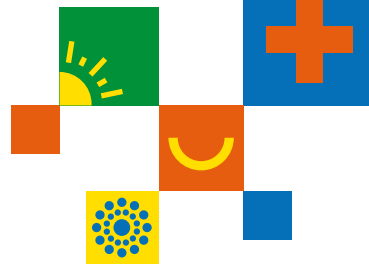


- **Grade 7 Science YUM Connection & Gardening Club**

Our Grade 7 Science program has for many years included gardening in their plants unit, recently bringing Yayasan Usaha Mulia (YUM) on board for working with students on gardening techniques and strategies, the use of farming in Indonesian culture and as a means for nurturing healthy communities. Through this connection, YUM also helped maintain a garden at JIS through with our after-school Gardening Club. The produce grown has been donated to different and used by Sodexo.

- **Gerakan Kepedulian Club**

The Middle School branch of the Gerakan Kepedulian (GK) service club operates on Tuesday each week, alternating work with GK site students and the High School GK Club. Our Middle School student volunteers planned fun activities for local GK site children and also conducted weekend visits to partner groups, where they participated in activities led by GK students. This distribution of leadership between JIS students and GK students has really improved the two groups relationship. Participating as leaders during the PTA Family Fun Fair for GK kids, as well as the Water Fun Day were



also major highlights of the year as student improved their capabilities as service club members.



• **Penguin Patrol and Green Dragons**

1. Our Penguin Patrol Club organized the recycling of paper within Middle School, which included creating and monitoring bins for paper collection in each classroom, as well as the Middle School Office.
2. The Green Dragons also focused on spreading awareness about environmental issues and leading environmental initiatives within the student body.

Elementary School

Students collaborate with the community in response to an authentic need, enabling them to learn and apply academic, social,

and personal skills that foster a lifelong ethic of service.

- **Pattimura Elementary School Tutti Fruity Day:** A food rescue program with Yayasan Emmanuel to the families of the Gulaga Community.
- **JIS Stitch It:** An annual service-learning project run and organized by Early Years students, teachers, and parents at the JIS Pattimura (PEL) campus. It aims to raise funds for children's education while giving PEL families the chance to create personalized gifts or label their belongings.

29



- **Pondok Indah Elementary School Walk-a-Thon:** Fundraising for scholarships for Yayasan Kampung Kids.

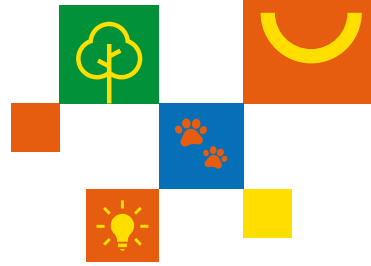
**Thank you all
for a great service year!**

How to Apply

If you would like to apply for financial support for a service project from JIS Peduli, the application form can be found on JISNet under Schoolwide/Service/JIS Peduli. Students and employees of JIS may submit applications, as well as JIS service partners. Applications by student clubs should be supported by the club advisor.

After completing the application and passing the initial screening process, the JIS Peduli Board encourages





applicants to present their ideas at one of our quarterly meetings. Generally speaking, we are looking for projects where JIS students and the JIS community will have a long-term sustained commitment. We do not support projects that do not actively engage JIS students and/or other members of the JIS community. We also do not support projects outside of Indonesia.



Applications should be submitted to the JIS Peduli Vice Chairperson no later than one week prior to a quarterly board meeting, however applications that require immediate attention can be submitted at any time where they will be circulated electronically for possible approval.

The Board may ask for more details about the project, or may make recommendations as to how the funds could be used more effectively. Recipients of funding will be asked to update the board both in writing and with images. A questionnaire will be provided.



