

# WELCOME FAMILIES!



## International Baccalaureate Middle Years Programme Parent Informational Session



# Outcomes for the evening

- Family Connections - Naviance
- What is the Middle Years Programme (MYP)?
- Why is the Middle Years Programme (MYP) beneficial for my student?
- What is the Diploma Programme (DP)?
- What is the Career Programme (CP)?



# What is Family Connections?

- Family Connection (Naviance) is a career and college planning tool
- Students use the chromebook log in to sign in
- Can be accessed from home (web-based)



# What can students do in Naviance?

- Take surveys to help you think about your interests, strengths and qualities
- Research careers and colleges
- Plan your high courses
- Identify and work on skills you need to accomplish your goals
- Track colleges where you apply
- See upcoming college Rep Visits





# What is the International Baccalaureate?

- Internationally Recognized educational programmes striving to, “develop students who will build a better world through intercultural understanding and respect” (ibo.org)
- Schools must be authorized by the IB in order to be an IB World School
- Cordova High and W.E. Mitchell Middle is one of 5,175 schools who offer the IB programmes worldwide
  - 1,835 of these schools are in the United States (665 MYP)
- Folsom Cordova offers three (3) IB Programmes
  - Middle Years Programme - required for ALL 6th - 10th graders
  - Diploma Programme - for 11th and 12th graders by application
  - Career Programme - for 11th and 12th graders by application (Patient Care)



# International Baccalaureate Mission Statement

The International Baccalaureate aims to develop inquiring, knowledgeable and caring young people who help to create a better and more peaceful world through intercultural understanding and respect.

To this end the organization works with schools, governments and international organizations to develop challenging programmes of international education and rigorous assessment.

These programmes encourage students across the world to become active, compassionate and lifelong learners who understand that other people, with their differences, can also be right.



# Learner Profile

## The Mission Statement in Action

### IB Learners Strive to Be:

- Inquirers
- Knowledgeable
- Thinkers
- Communicators
- Principled
- Open-minded
- Caring
- Risk-takers
- Balanced
- Reflective



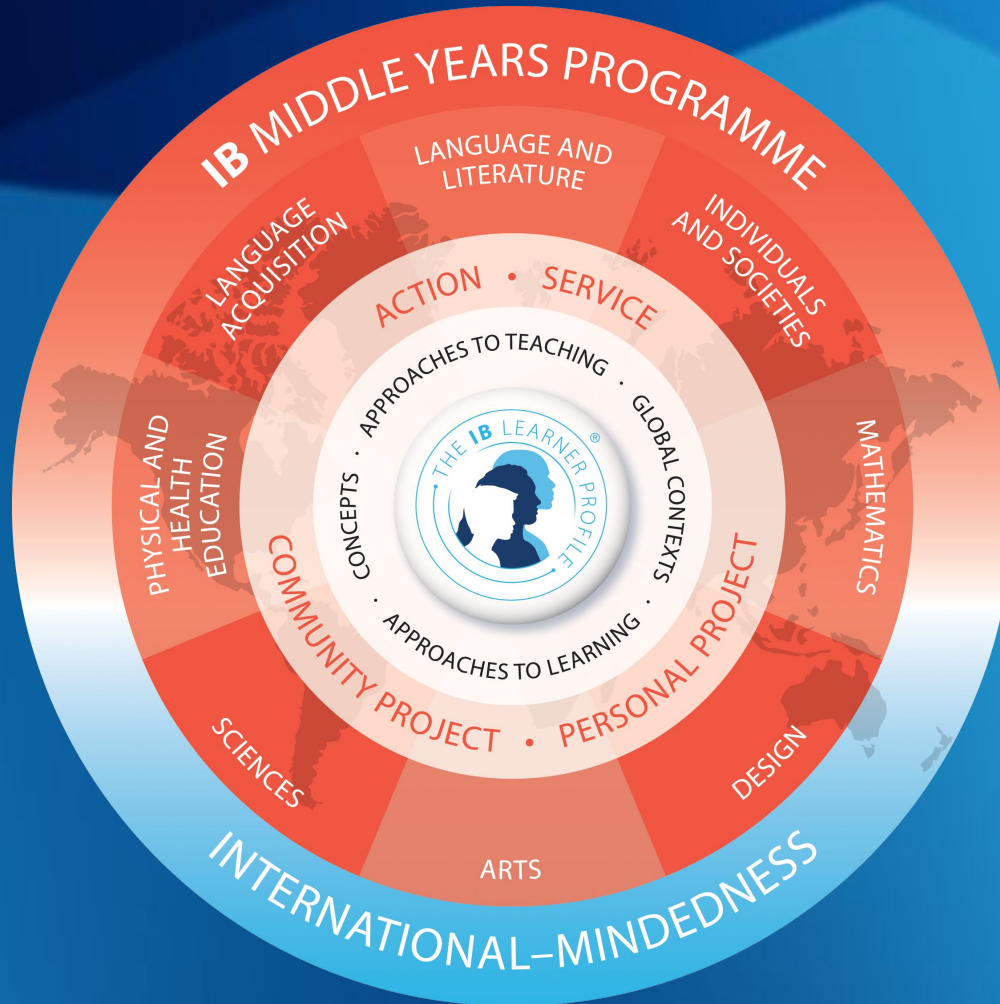
# International Baccalaureate Middle Years Programme

<http://www.ibo.org/digital-toolkit/videos/>





# MYP Programme Model



# Required Courses

W.E. Mitchell Middle School (6-8) MYP Years 1-3

- Language and Literature (English)
- Mathematics
- Sciences
- Individuals and Societies (History)
- Physical and Health Education
- Language Acquisition (Spanish or French)
- Design (through Science - NGSS)
- Arts (Visual and Performing)



# Required Courses

Cordova High School (9-10) MYP Years 4-5

Students take 6 plus an elective

- Language and Literature (English)
- Mathematics
- Sciences
- Individuals and Societies (History)
- Physical and Health Education
- Language Acquisition (Spanish or French)

Elective

- Design (Culinary, Engineering, Business, Construction)
- Arts (Visual and Performing)



# Year 5 Personal Project

- Capstone project - Sophomore Year
- Centered on student choice
- Students
  - Choose a topic, research, create a product, and write a reflective paper
- Completed in September - January, Due February 8
- Spring - Project Expo
- Incentives - certificate from IBO, pin at graduation, mention on transcript
- Google Site on CHS website



# MYP Units of Instruction

- Inquiry-based (similar to project-based)
- Grounded in key concepts with a focus on a global context
  - Example of key concept: Communication
  - Example of a global context: Identities and Relationships
- Teachers use **key concepts** to teach their **content** within a **global context**
- Ongoing and frequent formative assessments lead students to demonstrate learning through summative tasks





# MYP Assessment

Final grades are calculated based on summative assessment scores

- Summative Assessment - occurs at the end of unit of instruction. The purpose is to evaluate mastery of learning
  - Examples of summative assessments can be: Chapter Exams, Performance Tasks, Essays, Presentations, and Projects



# MYP Assessment

Formative Assessment occur after small amounts of instruction while you are making meaning of new concepts. The feedback is nearly immediate and helps you integrate new information with previous knowledge.

Formative assessments also help teachers adjust instruction to best meet the needs of our students. Formative assessments are powerful tools that can help improve your understanding.

- Examples of formative assessments can be: Class Work, Exit Tickets, Interviews, Homework, Quick Writes, Quizzes, Socratic Seminars, and Warm-Ups



# MYP Grading

<https://www.youtube.com/watch?v=Eoo4aE0jO4A>



# MYP Grading

- Teachers assess student learning based on CA state standards and according to IB Grading criteria
- Each subject area has 4 Grading Criteria and they are assigned letters: A, B, C, D
- All grades are based on a 1-8 grading rubric given to students ahead of time so they know exactly what they need to do in order to get an 8
- For example: an English essay may be graded on:

A: Analysing

B: Organising

Students on this essay will get 2 grades

A grade of (1-8) for A: Analysing AND a grade of (1-8) for B: Organizing



# Determining Final Grades (at end of quarter/semester)

- Teachers look at all the scores for each criterion and assign a best fit judgement final score for each criterion

A: Analysing

1st assessment = 5   2nd assessment = 4   Teacher's final score for A = 5

- ADD all the final scores
- Sum of all 4 scores correlates to an IB MYP International Grade and a CA Local Grade



# Final Grades

IB Number Grade	Boundaries (Totals)	Final letter grade (fall)	Final letter grade (spring)
1	1-5	D/D-/NM	D-/F
2	6-9	D+/C-	D+/C-
3	10-14	C+/C	C+/C
4	15-18	B/B-	B/B-
5	19-23	B+/B	B+/B
6	24-27	A/A-	A/A-
7	28-32	A+/A	A+/A



# Managebac

- Integrated Information System used in 4 out of every 5 IB World Schools
- All grades are inputted in Managebac - assignments are called tasks
- Mitchell - Only FINAL grades are inputted in PowerSchool (quarter/semester)
- CHS - Summative scores and FINAL grades are put in Managebac. Teachers record formatives in a variety of places - check their teacher website
- Managebac provides parents and students with much more information
  - Rubrics - why the student received the score they did
  - Copies of Assessments
  - Scores
  - Teacher Comments
- Account information emailed to the email on file
- Visit the IB>MYP Section of the website for assistance



# Diploma Programme (DP)



- 11th and 12th graders
- Known to make students competitive for and in college
- Theory of Knowledge course (TOK) focuses on “how do we know what we know” through a formal essay and presentation
- College-level research paper
- Community, Activity, Service hours allow students to see the impact they have on our world
- End of course examinations with opportunity to earn college credit (30/30)



# Career Programme (CP)



- 11th and 12th graders
- Known to make students well rounded by providing academic and career focused instruction
- Personal and Professional Skills course (PPS) focuses on fostering skills needed for the workplace
- 2-year Patient Care course
- Reflective Project focused on an ethical dilemma in the medical field
- Language Development
- Service Learning
- End of course examinations for 2 DP courses



# For Additional MYP Support

Contact:

Amy Strawn, IB Coordinator

[astrawn@fcusd.org](mailto:astrawn@fcusd.org)

