

W.E. Mitchell Middle School and Cordova High School International Baccalaureate (IB)



Middle Years Programme
(MYP)

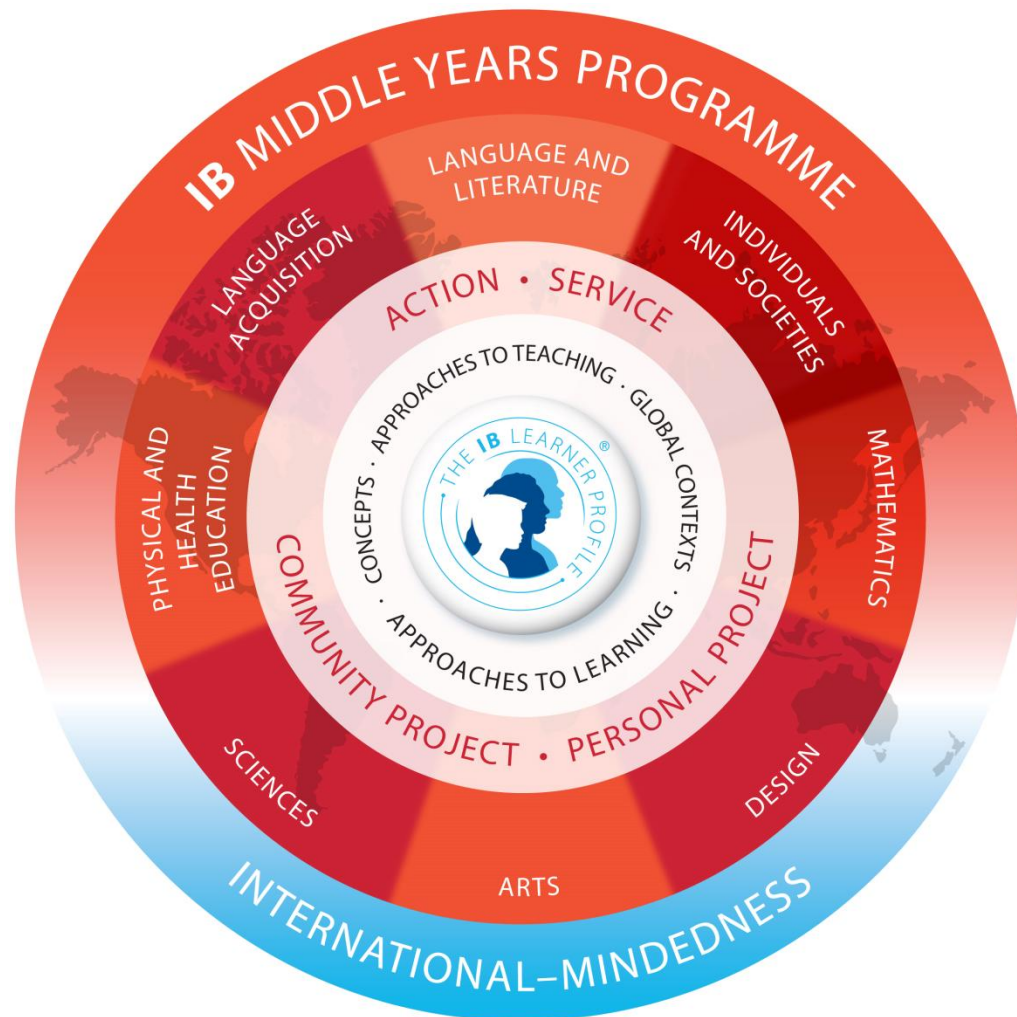
Guiding Question

How will MYP affect my student?

International Baccalaureate (IB) Mission Statement

“The International Baccalaureate aims to develop inquiring, knowledgeable and caring young people who help to create a better and more peaceful world through intercultural understanding and respect. To this end the organization works with schools, governments and international organizations to develop challenging programmes of international education and rigorous assessment. These programmes encourage students across the world to become active, compassionate and lifelong learners who understand that other people, with their differences, can also be right” (IBO.org).

A Student Centered Approach



Key Components of MYP

- Learner Profile – IB learners strive to be

Inquirers

Principled

Balanced

Knowledgeable

Open-minded

Reflective

Thinkers

Caring

Communicators

Risk takers

- Inquiry based Instruction divided into thematic units
- Project-based
- Global contexts

Identities and relationships

Scientific and technical innovation

Orientation in space and time

Globalization and sustainability

Personal and cultural expression

Fairness and development

- Approaches to Learning (ATL) – skill categories that are interconnected; support the development of study skills

Assessment in the MYP

- Formative vs. Summative
- 100% of a student's final grade is determined based on summative assessments – ie: what they actually know
- Criterion-related
- Each subject has 4 criteria
 - A:
 - B:
 - C:
 - D:

Assessment Criteria

Subject Area	A	B	C	D
Language and Literature	Analysing	Organising	Producing text	Using language
Language Acquisition	Comprehending spoken and visual text	Comprehending written and visual text	Communicating	Using language
Individuals and Societies	Knowing and understanding	Investigating	Communicating	Thinking critically
Sciences	Knowing and understanding	Inquiring and designing	Processing and evaluating	Reflecting on the impacts of science
Mathematics	Knowing and understanding	Investigating patterns	Communicating	Applying mathematics in real-world contexts

Assessment Criteria

Subject Area	A	B	C	D
Arts (visual and performing)	Knowing and understanding	Developing skills	Thinking creatively	Responding
Physical and Health Education	Knowing and understanding	Planning for Performance	Applying and Performing	Reflecting and improving performance
Design	Inquiring and analysing	Developing ideas	Creating the solution	Evaluating

Determining the Final Grade - Fall

Language and Literature

A: Analysing

5 4 = 5

B: Organising

7 6 = 7

C: Producing text

5 6 = 6

D: Using language

5 6 = 6

TOTAL 24 ... A/A-

Grade	Boundaries	Descriptor	Letter Grade (fall)	Letter grade (spring)
1	1-5	Minimal achievement	D/D-/F	D/D-/F
2	6-9	Very limited achievement, difficulty in understanding, unable to apply them even with support.	C-/D+	C-/D+
3	10-14	Limited achievement, limited understanding, only able to apply with support	C+/C	C+/C
4	15-18	Good general understanding, able to apply in normal situations, There is occasional evidence of the skills of analysis, synthesis and evaluation.	B/B-	B/B-
5	19-23	Consistent and thorough understanding, able to apply in a variety of situations, generally shows evidence of analysis, synthesis and evaluation where appropriate and occasionally demonstrates originality and insight.	B+/B	B+/B
6	24-27	Consistent and thorough understanding, able to apply in a variety of situations, Consistent evidence of analysis, synthesis and evaluation is shown where appropriate, generally demonstrates originality	A/A-	A/A-
7	28-32	Consistent and thorough understanding, able to apply almost faultlessly, consistent evidence of analysis, synthesis and evaluation is shown where appropriate, consistently demonstrates originality and insight and always produces work of high quality	A+/A	A+/A

Comments or Questions?

Monthly MYP Parent-Drop In Nights

- September 29, 6:30-7:30, CHS Library
- October 27, 6:30-7:30, Mitchell Library
- December 1, 6:30-7:30, CHS Library
- January 26, 6:30-7:30, Mitchell Library
- February 25, 6:30-7:30, CHS Library
- March 29, 6:30-7:30, CHS Library
- April 26, 6:30-7:30, Mitchell Library

W.E. Mitchell Middle Contact Information:

- Jim Huber, Principal
 - (916) 635-8460
 - jhuber@fcusd.org
- Christy Wilkerson, Vice Principal
 - (916) 635-8460
 - cwilkerson@fcusd.org
- Cindy Geistert, MYP Coordinator
 - (916) 635-8460 ext. 103
 - cgeistert@fcusd.org

Cordova High Contact Information:

- Dan Anklam, Principal
 - (916) 294-2450 ext. 810110
 - danklam@fcusd.org
- Jonathan Johnson, Vice Principal
 - (916) 294-2450
 - JGJohnson@fcusd.org
- Suzanne Borth, MYP Coordinator
 - sborth@fcusd.org
- Nancy White, MYP Personal Projects
 - nwhite@fcusd.org

Resources/References

- "International Education - The International Baccalaureate Offers High Quality Programmes of Education to a Worldwide Community of Schools." *International Education - The International Baccalaureate Offers High Quality Programmes of Education to a Worldwide Community of Schools*. International Baccalaureate, 2005. Web. 26 Nov. 2012. <<http://www.ibo.org/>>.