

# Appendix D: SFID Maps

---



PROPOSED BOUNDARY OF  
**FOLSOM CORDOVA**  
 UNIFIED SCHOOL DISTRICT  
 SCHOOL FACILITIES  
 IMPROVEMENT DISTRICT NO. 1  
 COUNTY OF SACRAMENTO, STATE OF CALIFORNIA  
 JUNE 1997  
 SHEET 1 OF 2

FILED IN THE OFFICE OF THE CLERK OF THE BOARD OF SUPERVISORS OF THE FOLSOM CORDOVA UNIFIED SCHOOL DISTRICT THIS \_\_\_\_\_ DAY OF \_\_\_\_\_, 1997.

BOBBI BEYON  
 CLERK OF THE BOARD OF EDUCATION  
 FOLSOM CORDOVA UNIFIED SCHOOL DISTRICT

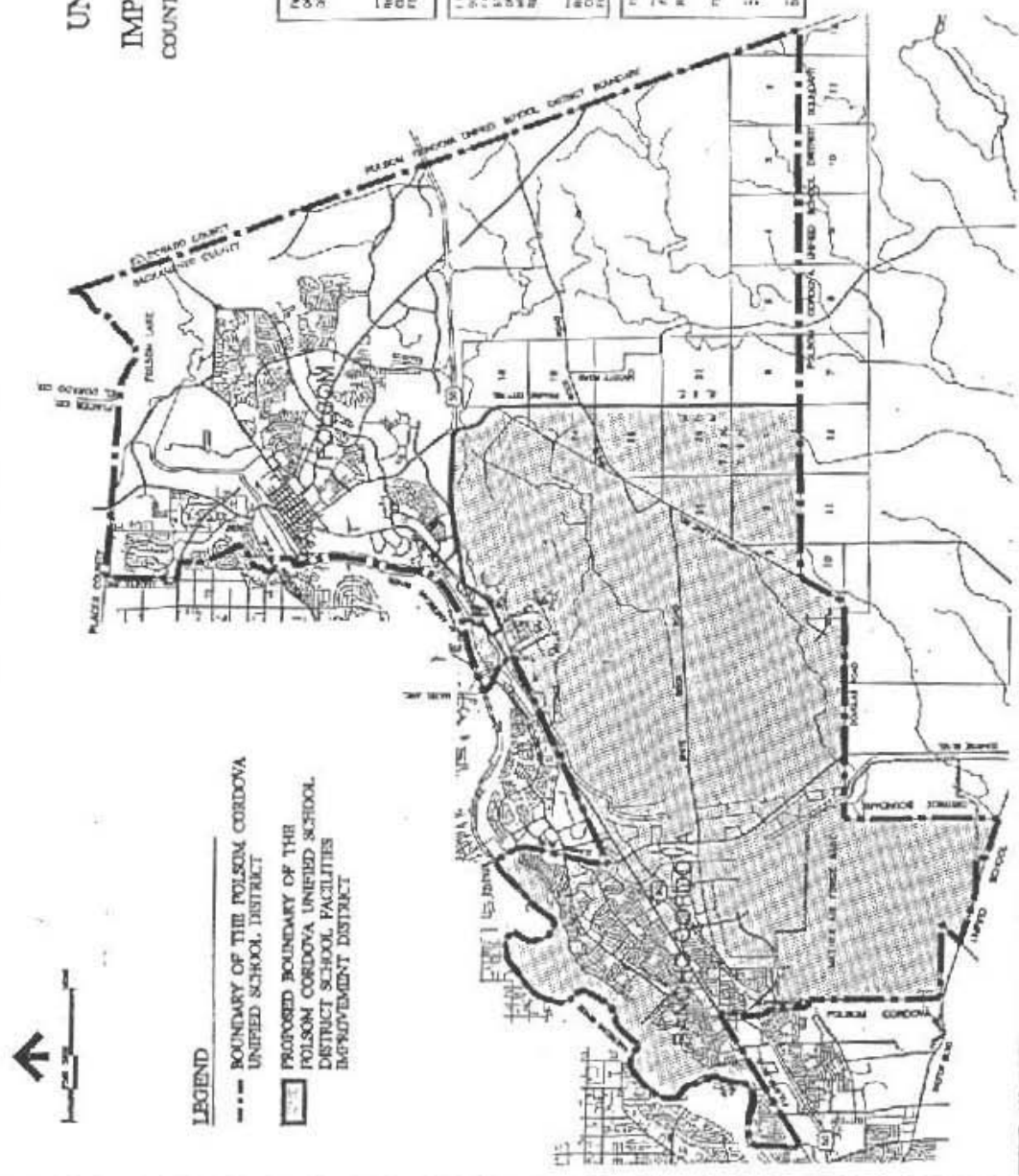
I HEREBY CERTIFY THAT THE WITHIN MAP SHOWING THE PROPOSED BOUNDARY OF THE FOLSOM CORDOVA UNIFIED SCHOOL DISTRICT SCHOOL FACILITIES IMPROVEMENT DISTRICT NO. 1, COUNTY OF SACRAMENTO, STATE OF CALIFORNIA, WAS APPROVED BY THE BOARD OF EDUCATION OF THE FOLSOM CORDOVA UNIFIED SCHOOL DISTRICT AT A REGULAR MEETING HELD ON THE \_\_\_\_\_ DAY OF \_\_\_\_\_, 1997, BY RESOLUTION NO. \_\_\_\_\_.

BOBBI BEYON  
 CLERK OF THE BOARD OF EDUCATION  
 FOLSOM CORDOVA UNIFIED SCHOOL DISTRICT

FILED THIS \_\_\_\_\_ DAY OF \_\_\_\_\_, 1997 AT THE HOUR OF \_\_\_\_\_ O'CLOCK \_\_\_\_\_ A.M. IN BOOK \_\_\_\_\_ OF MAPS OF ASSIGNMENT AND COMMUNITY FACILITIES DISTRICTS AT FOLSOM IN THE OFFICE OF THE COUNTY RECORDER IN THE COUNTY OF SACRAMENTO STATE OF CALIFORNIA.

TED \_\_\_\_\_  
 COUNTY RECORDER COUNTY OF SACRAMENTO  
 DEPUTY COUNTY RECORDER COUNTY OF SACRAMENTO

**TERRANCE E. LOWELL**  
 Surveyor & ASSOCIATES, INC.  
 4600 Highway 200, Suite 100  
 Sacramento, CA 95825  
 (916) 484-0885



PROPOSED BOUNDARY OF  
**FOLSOM CORDOVA**  
 UNIFIED SCHOOL DISTRICT  
 SCHOOL FACILITIES  
 IMPROVEMENT DISTRICT NO. 2  
 COUNTY OF SACRAMENTO, STATE OF CALIFORNIA

OCTOBER 1998  
 SHEET 1 OF 1

FILED IN THE OFFICE OF THE CLERK OF THE BOARD OF SUPERVISORS  
 OF THE FOLSOM CORDOVA UNIFIED SCHOOL DISTRICT THIS \_\_\_\_\_ DAY  
 OF \_\_\_\_\_ 1998

TERESA STANLEY  
 CLERK OF THE BOARD OF EDUCATION  
 FOLSOM CORDOVA UNIFIED SCHOOL DISTRICT

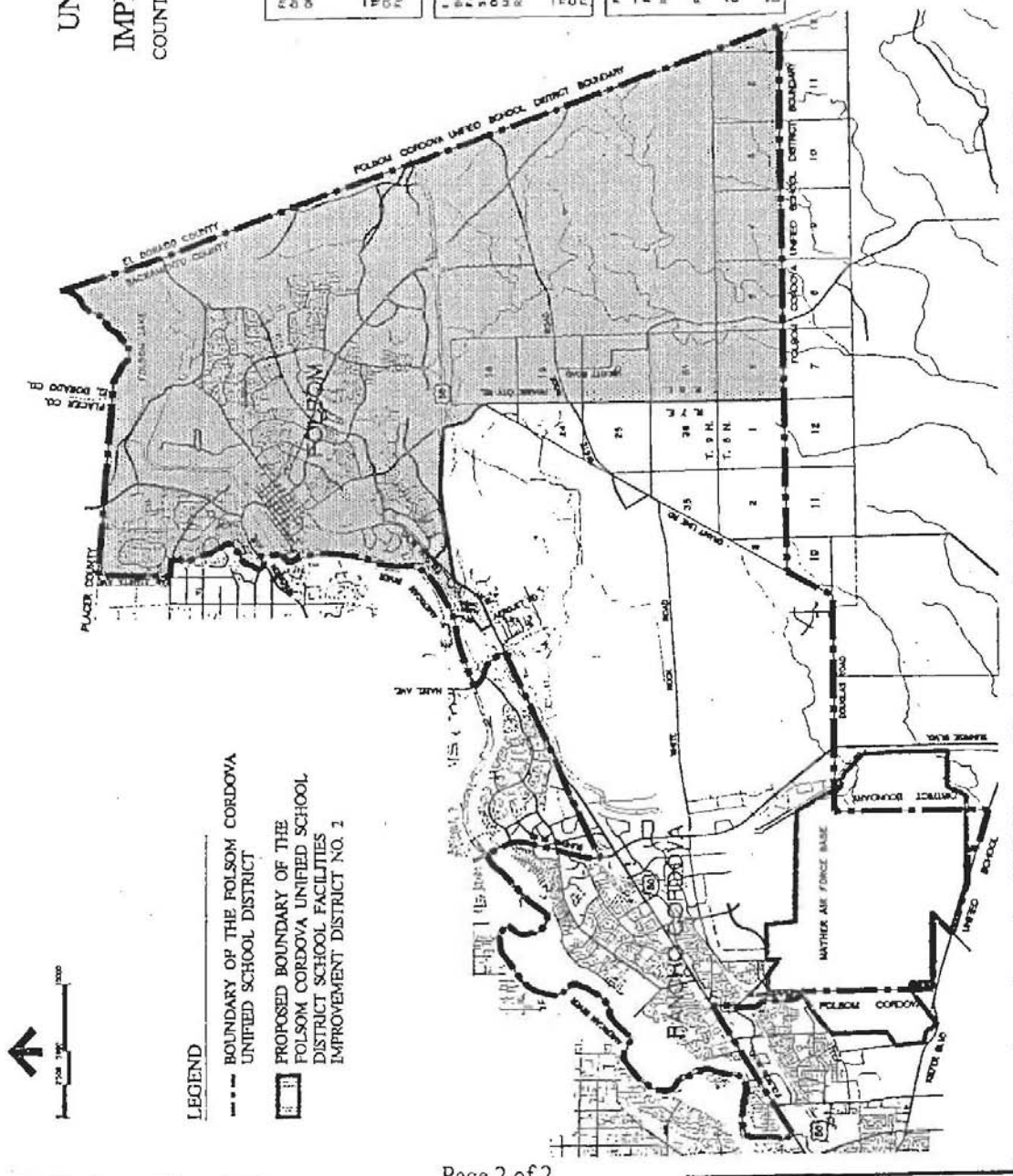
I HEREBY CERTIFY THAT THE ABOVE MAP SHOWING THE PROPOSED  
 BOUNDARY OF THE FOLSOM CORDOVA UNIFIED SCHOOL DISTRICT  
 FACILITIES IMPROVEMENT DISTRICT NO. 2, COUNTY OF SACRAMENTO,  
 STATE OF CALIFORNIA, WAS APPROVED BY THE BOARD OF EDUCATION  
 OF THE FOLSOM CORDOVA UNIFIED SCHOOL DISTRICT AT A REGULAR  
 MEETING THEREOF HELD ON THE \_\_\_\_\_ DAY OF \_\_\_\_\_ 1998, BY  
 RESOLUTION NO. \_\_\_\_\_

FILED THIS \_\_\_\_\_ DAY OF \_\_\_\_\_ 1998, AT THE HOUR OF \_\_\_\_\_ O'CLOCK  
 \_\_\_\_\_ M. P. BOOK # \_\_\_\_\_ OF MAPS OF ASSESSMENT AND GENERALITY  
 FACILITIES DISTRICTS AT PAGE \_\_\_\_\_ IN THE OFFICE OF THE COUNTY  
 RECORDER IN THE COUNTY OF SACRAMENTO, STATE OF CALIFORNIA

FILE \_\_\_\_\_

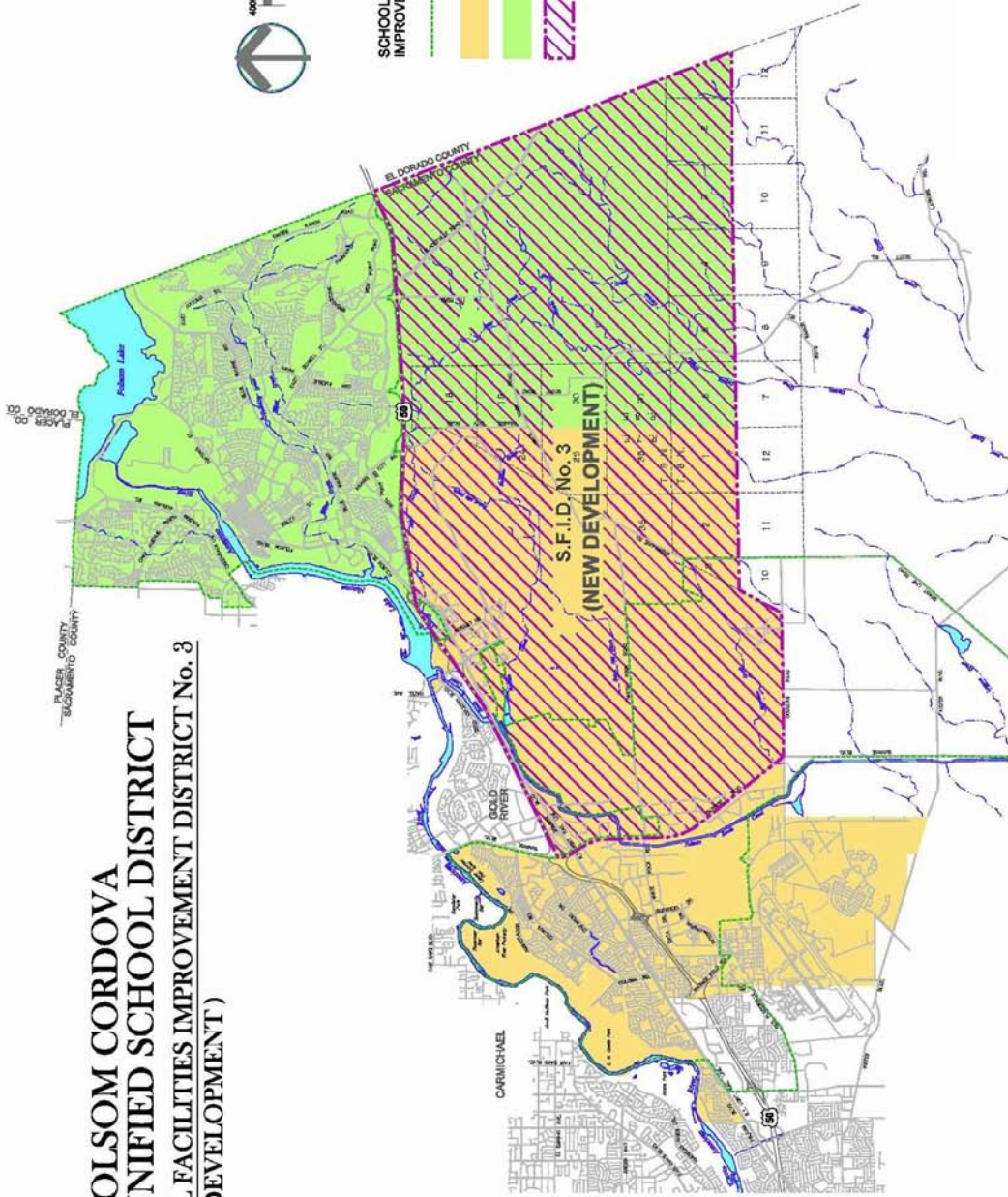
COUNTY RECORDER, COUNTY OF SACRAMENTO  
 DEPUTY COUNTY RECORDER, COUNTY OF SACRAMENTO

**TIA**  
**TERRANCE E. LOWELL**  
**& ASSOCIATES, I**  
 Engineering, Planning &  
 4525 GRANITE DRIVE, ST  
 PO. BOX 117, ROCKLIN, CA





- SCHOOL FACILITIES IMPROVEMENT DISTRICTS:**
- Folsom and Rancho Cordova City Limit Boundaries
  - Rancho Cordova Current S.F.I.D. No. 1
  - Folsom Current S.F.I.D. No. 2
  - S.F.I.D. No. 3 (New Development)

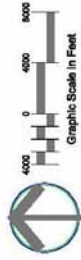


**FOLSOM CORDOVA  
UNIFIED SCHOOL DISTRICT**  
**SCHOOL FACILITIES IMPROVEMENT DISTRICT No. 3  
(NEW DEVELOPMENT)**

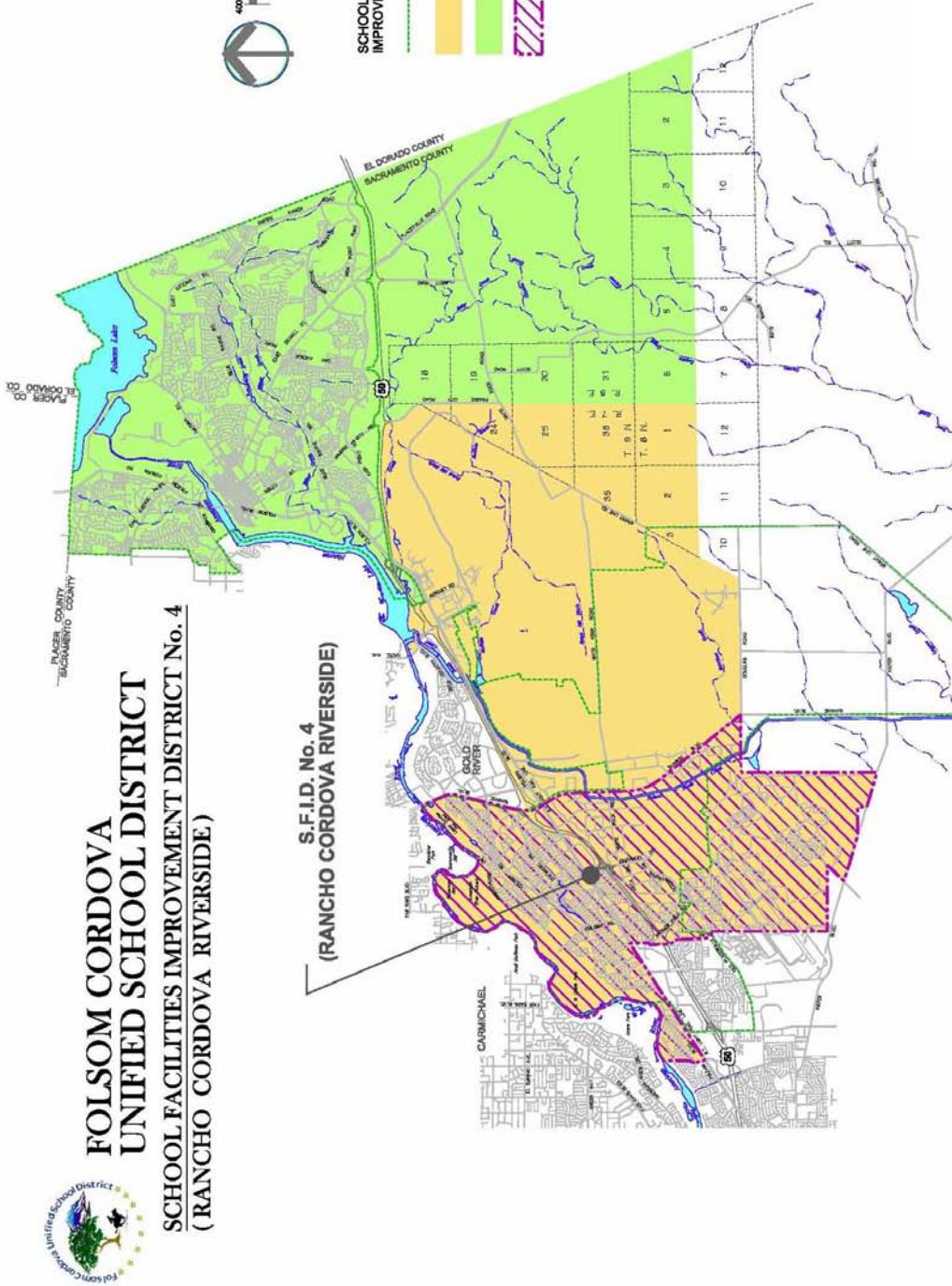




S.F.I.D.  
4



**SCHOOL FACILITIES IMPROVEMENT DISTRICTS:**  
 Folsom and Rancho Cordova  
 City Limit Boundaries  
 Rancho Cordova  
 Current S.F.I.D. No. 1  
 Folsom  
 Current S.F.I.D. No. 2  
 S.F.I.D. No. 4  
 (Rancho Cordova Riverside)



**FOLSOM CORDOVA  
 UNIFIED SCHOOL DISTRICT  
 SCHOOL FACILITIES IMPROVEMENT DISTRICT No. 4  
 (RANCHO CORDOVA RIVERSIDE)**

