



# Securing Our Future

Supporting Our Students.

Nov. 7, 2023

# Question 1: Highest Priorities

***Approximately \$5 a month on median home value***

First Question	Approximate Cost Estimate
Construct new secure entry at Park and Woodbury high schools, and Cottage Grove, Lake and Woodbury middle schools.	\$25 Million
Planned addition at East Ridge High School and renovations at Park and Woodbury high schools.	\$105 Million
Planned addition of Oltman Middle School and renovations at Woodbury Middle School.	\$30 Million

*Note: All construction costs are rough estimates.*

# What if Bond Question 1 Fails?

- Secured entrances, additions at East Ridge and Oltman, and high school renovations are put on hold.
- Overcrowding continues
  - Consider alternative scheduling and course delivery options for high schools
  - Review grade configurations at all levels
  - At this time, no changes to high school boundaries.
- Bond Question 2 also fails.
  - Attendance boundary changes at elementary schools will be implemented for the 2024-25 school year.
  - Middle school boundaries will be adjusted to keep elementary school cohorts together as much as possible.

# Question 2: Elementary School Additions and Bathroom Renovations

***Approximately \$1 a month on median home value***

Second Question	Approximate Cost Estimate
Elementary School Additions	\$31 Million
Construction of additional bathrooms at schools only containing a single set/four stalls (Crestview, Hillside, Pine Hill, Pullman and Royal Oaks elementary schools).	\$9 Million
<b>Total</b>	<b>\$40 Million</b>

*Note: All construction costs are rough estimates.*

# What if Bond Question 2 Fails?

- Instead of constructing additions at elementary schools projected to exceed capacity, attendance boundary changes would occur at the elementary level for the 2024-25 school year.
- Middle school boundaries will be adjusted to keep elementary school cohorts together as much as possible.
- Crestview, Hillside, Pine Hill, Pullman and Royal Oaks will continue with one set of bathrooms

# Boundary Change Tool



ABOUT US

ACADEMICS

SERVICES

GET INVOLVED

CONTACT US

FACILITY PLANNING

VOTE 2023

The screenshot displays the "SchoolSite Locator" web application. The title bar reads "South Washington (Question 2 fails)". On the left, a list of schools is shown with their names, addresses, and phone numbers, each followed by a "More info..." button. The schools listed are: Armstrong Elementary (PK-5), Bailey Elementary (PK-5), Central Park ECCE (EC-EC), Central Park PK (PK-PK), Cottage Grove Elementary (PK-5), Cottage Grove Middle School (6-8), and Crestview Elementary (PK-5). The map on the right shows the geographical layout of these schools and surrounding areas, with labels for various streets and landmarks. A search bar at the top of the map area contains the text "e.g. 8855 Inwood Ave S". The Davis County and MG1 logos are visible in the top right corner. The language is set to "English".

# Tax Impact of of Bond Questions 1 & 2 (\$200 Million)



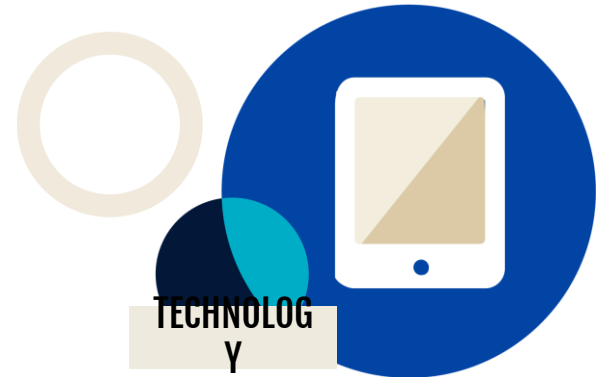
Estimated Tax Impact		
Home Value	Monthly	Annually
\$250,000	\$3	\$43
\$300,000	\$4	\$53
\$350,000	\$5	\$63
<b>\$409,000</b>	<b>\$6</b>	<b>\$75</b>
\$500,000	\$8	\$92
\$600,000	\$10	\$115
\$700,000	\$11	\$137

The median value home in the district is approximately \$409,000.

# Question 3: Technology Project Levy

## WHAT IS A CAPITAL PROJECTS LEVY?

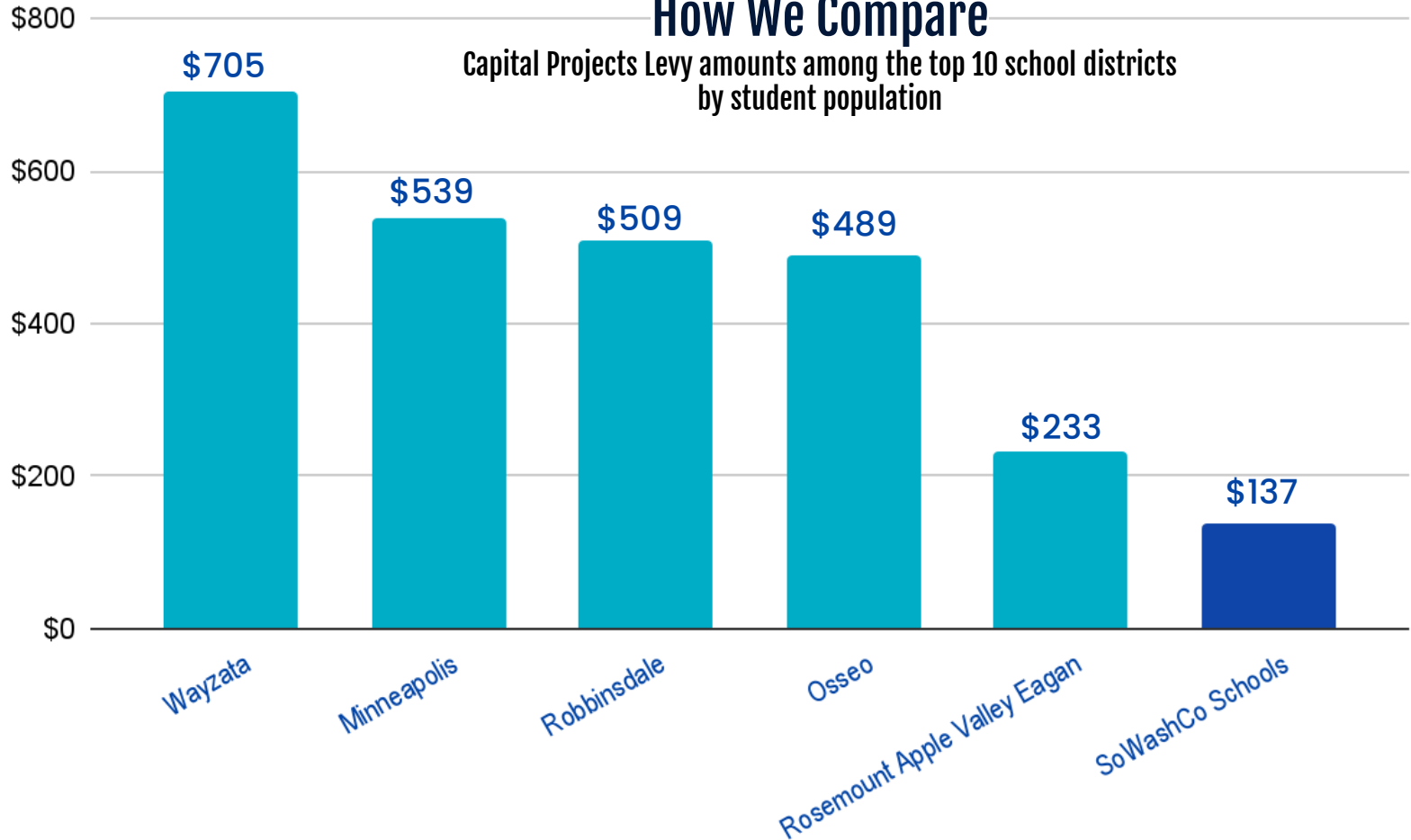
A capital projects levy provides funds for improved instructional technology, support staffing, maintenance and support for student and staff devices and enhanced technology infrastructure.





## How We Compare

Capital Projects Levy amounts among the top 10 school districts  
by student population



# Tax Impact Calculator



FAMILIES ▾ STUDENT ▾ STAFF ▾ 

ABOUT US

ACADEMICS

SERVICES

GET INVOLVED

CONTACT US

FACILITY PLANNING

VOTE 2023

LRFP Guidin

LRFP Guiding Change

Community Feedback

News and Updates

Tax Impact Calculator

Process

## Residential Homestead Property

If you own a RESIDENTIAL HOMESTEAD property, enter the Estimated Market Value below to see the estimated tax impact

### ESTIMATED MARKET VALUE

409000

*Enter only whole numbers to the nearest dollar  
(no dollar signs, commas, or decimals).*

CALCULATE

## South Washington County School's Referendum Estimated Change in Taxes Payable in 2024

Entered value: \$ 409,000

Calculated Values Below

	Question 1: Bond Referendum	Question 2: Bond Referendum	Question 3: Capital Project Levy				Total Q1, Q2 & Q3
	\$160,875,000	\$40,350,000	Revoke 1.820%	Replace 2.668%	Net Change 0.848%		
Annual*	\$ 61	\$ 14	\$ -77	\$ 113	\$ 36	Annual*	\$ 111
Monthly*	\$ 5	\$ 1	\$ -6	\$ 9	\$ 3	Monthly*	\$ 9

\* Amounts are based on school district taxes for proposed bonds and capital project levy only, and do not include tax levies for other purposes. Tax increases shown above are gross increases, not including impact of homeowner's Homestead Credit Refund ("Circuit Breaker") program. Some owners of homestead property may qualify for a refund, based on their income and total property taxes. This would decrease the net tax impact for those property owners.



# Getting the Word Out



- Article in the Pioneer Press
- Video posted online
- Statement shared at large events at our high schools
- Informational Meetings completed:
  - Cottage Grove City Council
  - Newport City Council
  - Woodbury City Council
  - Washington County Staff
  - Legislators
  - Community Groups - SoWashCo Cares
- District and School Communications
  - Schools - PTO/PTA's, other parent groups
- Staff and Family News

# Looking Forward

- Upcoming Informational Sessions
  - Seniors
  - Retired District Staff
  - Woodbury Rotary
  - East Ridge Athletic Association
  - Woodbury Chamber
  - Woodbury Equity Alliance
  - City of St. Paul Park
  - League of Women Voters
  - Early Learning Families
- District Mailing – Voting Information and Polling Locations – Oct. 13
- District Quarterly Mailing – Week of Oct. 19
- Two Community Meetings

# Visit [sowashco.org/facilityplanning](https://sowashco.org/facilityplanning)



## BONDS FOR BUILDINGS



### Question 1:

**Safety and security enhancements and expansions and renovations at secondary schools. (Approx. \$160 Million total)**

- Construct new secure entry at Park and Woodbury high schools, and Cottage Grove, Lake and Woodbury middle schools
- Planned addition at East Ridge High School and renovations at Park and Woodbury high schools
- Planned expansion of Oltman Middle School and renovations at Woodbury Middle School

### BOND QUESTION 1 DETAILS

+ Safety & Security Enhancements

+ Renovations for High Schools

+ Expansion/Renovations for Middle Schools



### Question 2:

**Addresses elementary school space at schools projected to exceed capacity; renovations for bathrooms at five elementary schools. (Approx. \$40 Million total)**

- Elementary school additions at Bailey, Grey Cloud, Pine Hill and Red Rock elementary schools
- Construction of additional bathrooms at schools only containing a single set/four stalls: Crestview, Hillside, Pine Hill, Pullman and Royal Oaks elementary schools

### BOND QUESTION 2 DETAILS

+ Elementary School Additions

+ Elementary Bathroom Renovations

+ Question 2 Contingency

The background is white and filled with numerous circles of three colors: dark blue, teal, and beige. Some circles are solid, while others are overlapping, creating a pattern of different shades and sizes. The word "Questions?" is centered in a bold, dark blue font.

**Questions?**