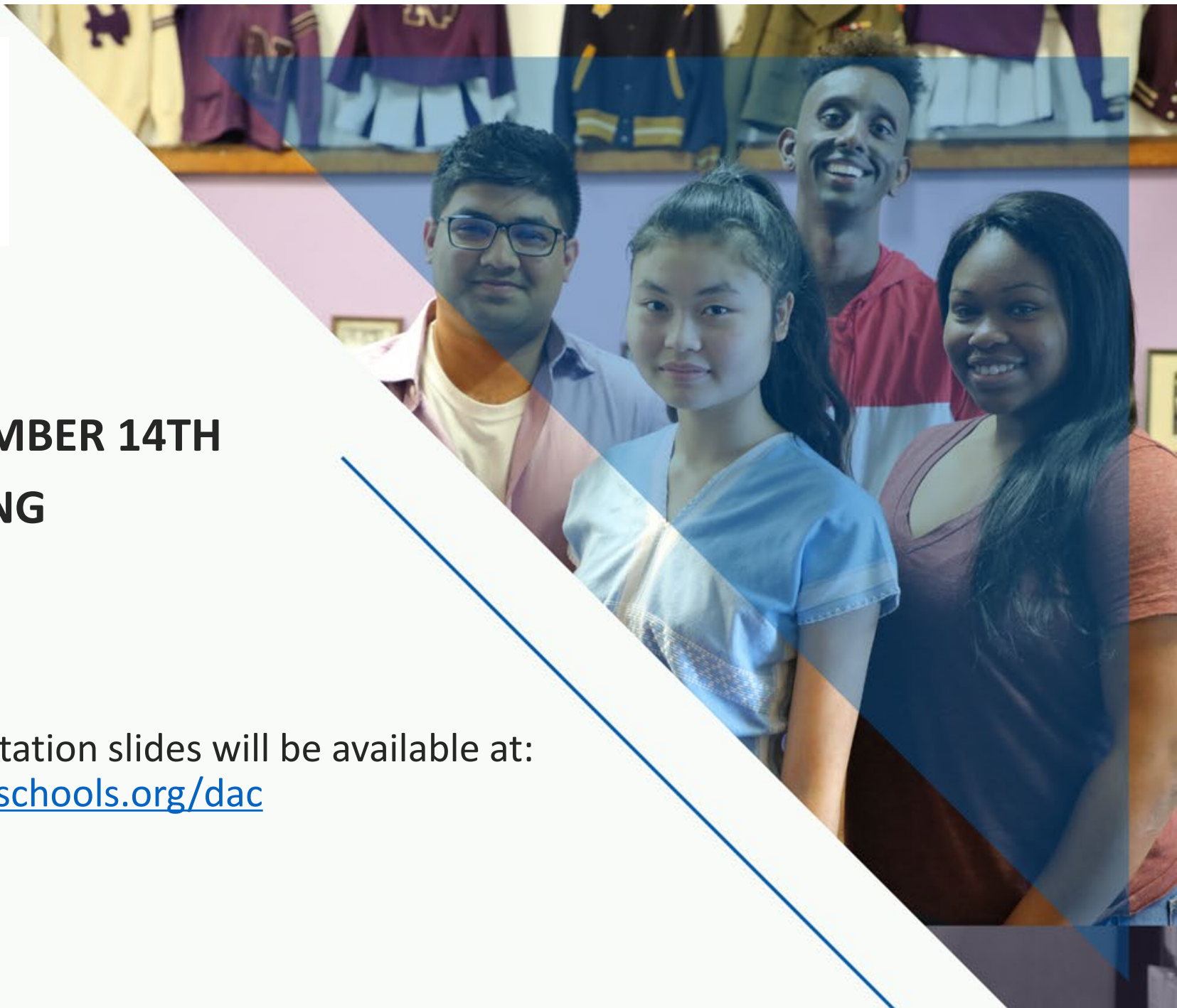




WELCOME TO THE SEPTEMBER 14TH GENERAL MEETING

Meeting recording and presentation slides will be available at:
www.kcpublicschools.org/dac





Kansas City
Public Schools

Agenda

Welcome and Introduction

Manuel Clark – DAC Chair

Presentations

Dr. Jennifer Collier – Opening Remarks

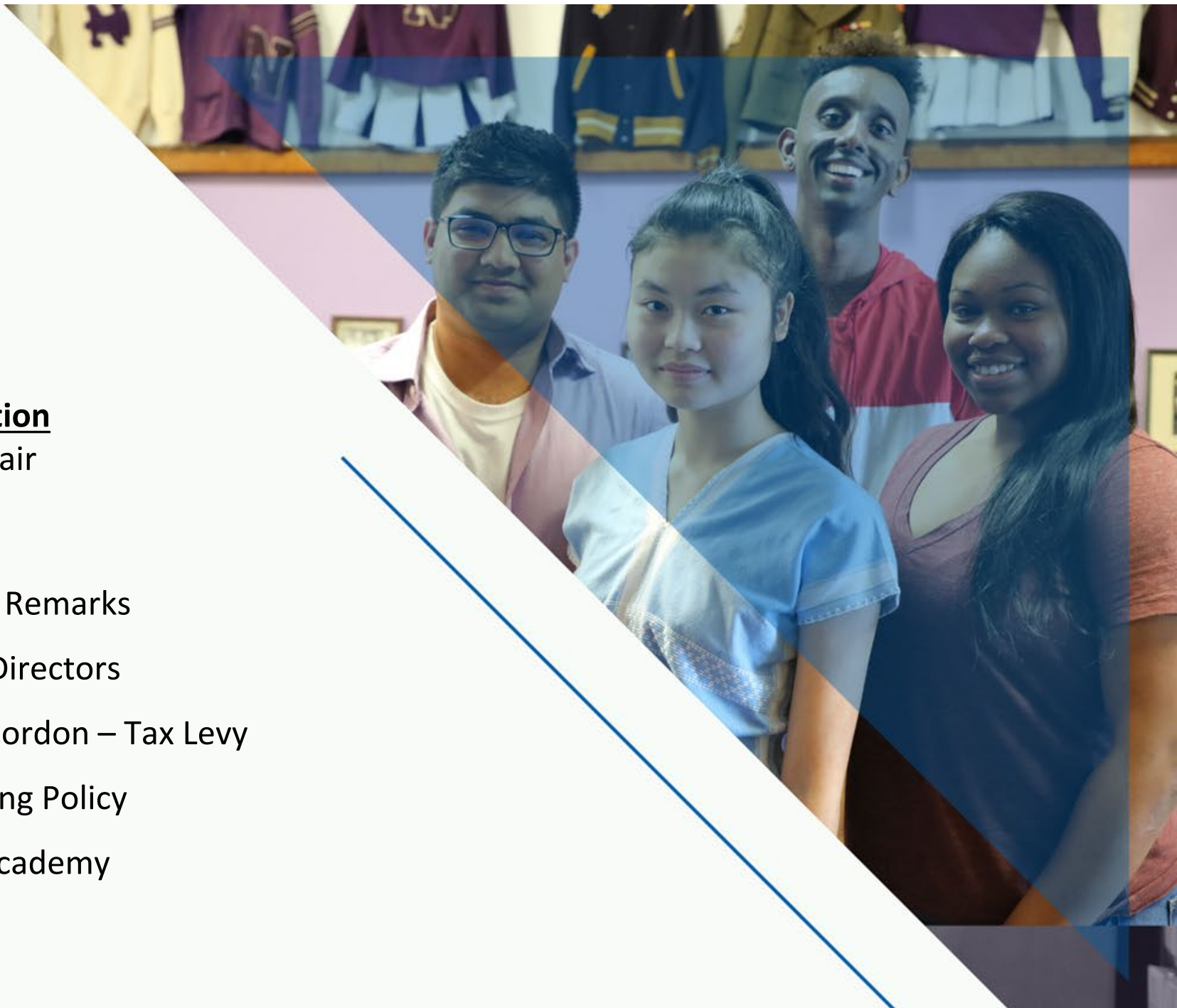
Rita Cortés – KCPS Board of Directors

Shana Long, Erin Thompson, Jordan Gordon – Tax Levy

Dr. Phillip Jones – KCPS Grading Policy

Lori Peters – Early College Academy

DAC Engagement



KANSAS CITY
PUBLIC SCHOOLS



Manuel Clark
DAC Chair





District Advisory Committee Executive Board

Junta Ejecutiva Del Comité Asesor Del Distrito

2023-2024 District Advisory Committee Executive Board Members

Miembros de la Junta Ejecutiva del Comité Asesor del Distrito

- Manuel L. Clark, Chair / **Presidente**
- Ashley Johnson, Vice Chair / **Vicepresidenta**
- Brittany D. Foley, Recording Secretary / **Secretaria de Grabación**
- Bob Rhoades, Treasurer / **Tesorero**
- Steve Burton, Parliamentarian / **Parlamentario**
- Amanda Trout, Corresponding Secretary / **Secretaria Correspondiente**
- Ibrahim Ramsey, Member-At-Large / **Miembro General**

Kansas City Public Schools

KANSAS CITY
PUBLIC SCHOOLS



Dr. Jennifer Collier
Superintendent



KANSAS CITY
PUBLIC SCHOOLS



Rita Cortés
Board of Directors



KANSAS CITY
PUBLIC SCHOOLS



Shana Long, Erin Thompson, Jordon Gordon

Taxy Levy



KANSAS CITY

PUBLIC SCHOOLS



THE TAX LEVY

District Advisory Committee

September 14, 2023

*In the spirit of mutual responsibility and accountability, we will continue
Moving Forward Together!*

HANCOCK Amendment

Tax Levies Under Article X of the Missouri Constitution

- Sections 16 to 24 (the “Hancock Amendment”) establishes highest possible levy rate that most local governments can adopt without voter approval
- Section 22
 - Political subdivisions including school districts require voter approval to increase levy above the levy in existence when Hancock was adopted in Fiscal year 1981-1982
 - Requires levy roll back if increase in assessed valuation is greater than the change in consumer price index (CPI)

History of Tax Levies in KCPS

- 1969: district voters approved tax levy of 3.75 for KCPS
- 1969 to 1980s: district voters voted down levy increases nineteen times
- 1977: Desegregation litigation (*Missouri v. Jenkins*) that lasted decades
 - After voters again defeated three ballot measures to raise levies or issue bonds, Court set levy at \$4.96 for KCPS
 - 1996 Settlement Agreement left the \$4.96 court ordered levy in place to prevent financial chaos for the district

Section 11(g)

- In April 1998, as a result of the 1996 Settlement Agreement, Missouri legislature approved proposed amendment 11(g)
- Missouri voters passed a statewide ballot measure to add Section 11(g) to Article X
 - School board of “any school district whose operating levy . . . for the 1995 tax year was established pursuant to a federal court order may establish the operating levy . . . at a rate that is lower than the court-ordered rate for the 1995 tax year”
 - KCPS Board can set a levy rate that is lower than 4.96 (4.9599) without voter approval

KCPS Levy Calculation

- Use Hancock Amendment formula to calculate baseline levy
 - If inadequate to fund district's operations,
 - Use 11(g) to set additional levy, up to total levy of \$4.9599
- Operating levy calculated under Hancock formula is never sufficient to fund KCPS operations
- Without 11(g) exception, KCPS would not have sufficient funds to operate
- Charter Schools receive funding based on KCPS assessed valuation and tax levy rate, and any decrease in 11(g) levy would negatively impact Charter school budgets as well

KCPS Levy Calculation

Hancock Levy without 11(g)		Hancock Levy with 11(g)	
Calculated Hancock Levy	2.4065	Calculated Hancock Levy	2.4065
Less: Prop C rollback	<u>0.2622</u>	Less: Prop C rollback	<u>0.2622</u>
Tax Rate:	2.1443	Tax Rate:	2.1443
Add: Article X (11g) Levy	<u>0.0000</u>	Add: Article X (11g) Levy	<u>2.8156</u>
Total Tax Rate	2.1443	Total Tax Rate	4.9599

2023 TAX LEVY

Proposed Rate for 2023

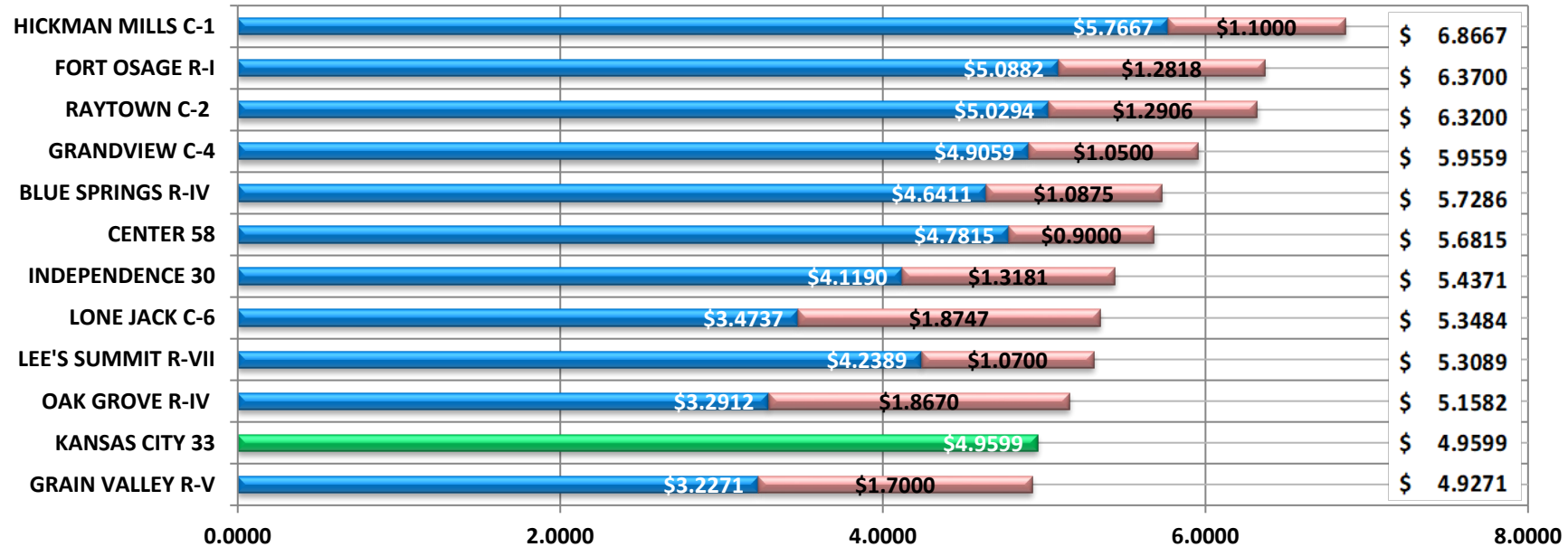
Total Tax Levy (Operating Fund) - \$4.9599

On April 7, 1998, the Missouri Constitution Article X, Section 11(g) was adopted permitting the school board of any district whose 1995 operating levy was established by a federal court, to establish a levy that is lower than the court-ordered approved levy. KCPS court-ordered levy was \$4.96. Starting FY1999 and as part of desegregation resolution to continue to support the District's operations, KCPS levy was set at \$4.9599.

KCPS tax levy has been \$4.9599 for the past 25 years. This amount has been used to fund all operating, capital projects and debt service payments.

Total Tax Levy Comparison

TY 2022 Tax Levy



	GRAIN VALLEY R-V	KANSAS CITY 33	OAK GROVE R-IV	LEE'S SUMMIT R-VII	LONE JACK C-6	INDEPENDENCE 30	CENTER 58	BLUE SPRINGS R-IV	GRANDVIEW C-4	RAYTOWN C-2	FORT OSAGE R-I	HICKMAN MILLS C-1
Operating	\$3.2271	\$4.9599	\$3.2912	\$4.2389	\$3.4737	\$4.1190	\$4.7815	\$4.6411	\$4.9059	\$5.0294	\$5.0882	\$5.7667
Debt Service	\$1.7000		\$1.8670	\$1.0700	\$1.8747	\$1.3181	\$0.9000	\$1.0875	\$1.0500	\$1.2906	\$1.2818	\$1.1000

Total Tax Levy	\$4.9271	\$4.9599	\$5.1582	\$5.3089	\$5.3484	\$5.4371	\$5.6815	\$5.7286	\$5.9559	\$6.3200	\$6.3700	\$6.8667
2022 Enrollment	4,558	14,104	1,946	17,841	768	14,604	2,530	14,800	3,767	8,041	4,809	5,155

KCPS shared local tax revenue with Charter Schools with 2022 enrollment of 13,635.

Assessed Valuation History

Fiscal Year	2021-22	2022-23	2023-24	\$ Change	% Change
Tax Year	2021	2022	2023	\$ Change	% Change
Real Property					
Residential	1,852,795,966	1,880,925,720	2,539,413,458	658,487,738	35.01%
Agricultural	52,147	50,302	53,910	3,608	7.17%
Commercial	1,413,987,761	1,405,692,961	1,818,863,428	413,170,467	29.39%
Total Real Property	3,266,835,874	3,286,668,983	4,358,330,796	1,071,661,813	32.61%
Personal Property	739,566,465	877,387,223	888,028,850	10,641,627	1.21%
Total Assessed Valuation	4,006,402,339	4,164,056,206	5,246,359,646	1,082,303,440	25.99%

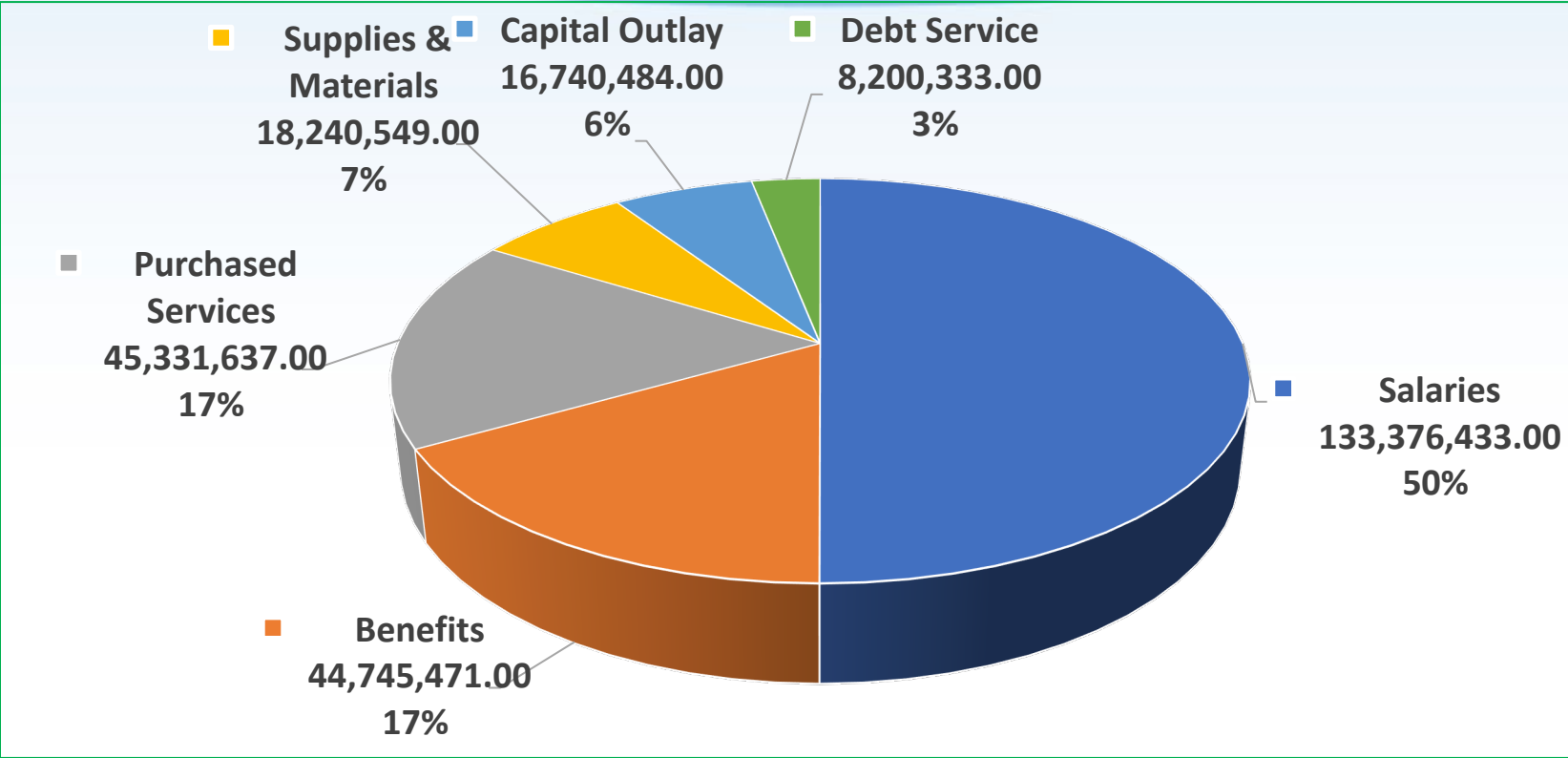
How We Set-up the Budget

<u>Kansas City Public Schools</u>		
Assessed Valuation	AV	\$5,246,359,646
Divide by	÷	100
Multiply by Tax Levy	x	\$4.9599
Property Tax @ 100%		\$260,214,192
** Projected Revenue @ 85% Collection Rate	=	\$221,182,063
Less: Jackson County Est. Retention Fees @1.7%	-	(\$3,760,095)
Projected Net Revenue	=	\$217,421,968
Budgeted Revenue @ 90% Collection Rate of Preliminary Assessed Valuation		\$221,208,496
Variance - Projected net Revenue vs. Budget		(\$3,786,528)

****** Collection rate projected to decrease due to the number of assessed valuation protests. Approximately 55,000 protested the 2023 assessments.

2023-24 Operating Expenditures

(Excluding Grants & CNS)



Total FY24 Operating Budget (excluding grants & child nutrition services) is \$266.6 million. Approximately, 83% of the total operating budget will be funded from the current assessed valuation. Tax revenue collected will fund the budget for the salaries & benefits of teachers, counselors, librarians, principals & vice principals, administrative staff, nurses, custodians, security & patrol officers, mental health support, family & community engagement, and other student support staff. It will also fund instructional services, classroom supplies & materials, utilities, building repairs & maintenance, and debt service payments.

Tax Levy 1999 vs. 2022

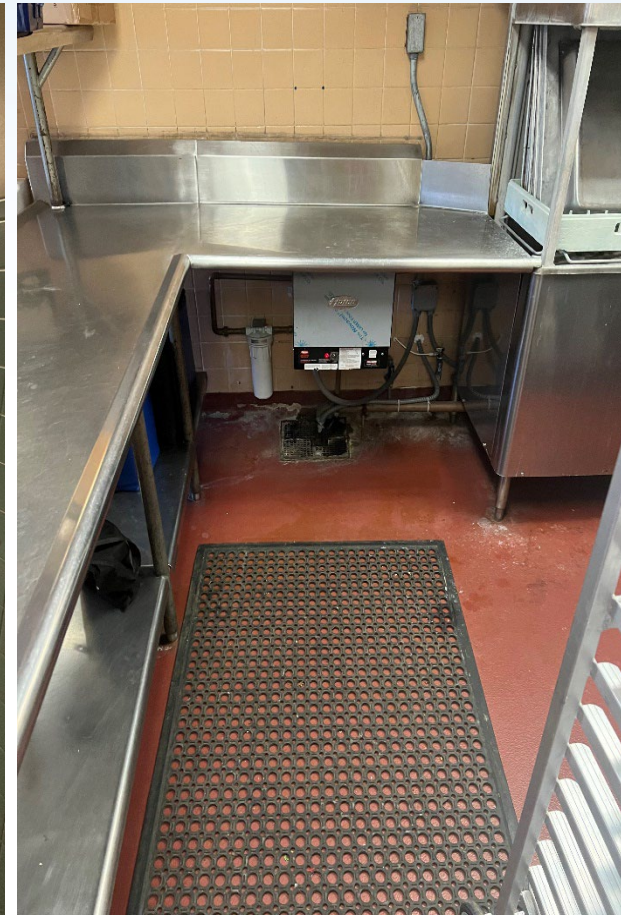
	1999 Tax Levy			2022 Tax Levy			Changed in Levy
	Operating Levy	Debt Service Levy	Total Levy	Operating Levy	Debt Service Levy	Total Levy	
HICKMAN MILLS C-1	\$4.2300	\$0.3100	\$4.5400	\$5.7667	\$1.1000	\$6.8667	\$2.3267
RAYTOWN C-2	\$3.8200	\$0.5300	\$4.3500	\$5.0294	\$1.2906	\$6.3200	\$1.9700
FORT OSAGE R-I	\$3.6700	\$0.7500	\$4.4200	\$5.0882	\$1.2818	\$6.3700	\$1.9500
CENTER 58	\$4.2500	\$0.0000	\$4.2500	\$4.7815	\$0.9000	\$5.6815	\$1.4315
OAK GROVE R-VI	\$3.1100	\$0.9000	\$4.0100	\$3.2912	\$1.8670	\$5.1582	\$1.1482
BLUE SPRINGS R-IV	\$3.6400	\$0.9600	\$4.6000	\$4.6411	\$1.0875	\$5.7286	\$1.1286
GRANDVIEW C-4	\$4.4400	\$0.5000	\$4.9400	\$4.9059	\$1.0500	\$5.9559	\$1.0159
LONE JACK C-6	\$3.1700	\$1.2000	\$4.3700	\$3.4737	\$1.8747	\$5.3484	\$0.9784
INDEPENDENCE 30	\$3.7000	\$0.7600	\$4.4600	\$4.1190	\$1.3181	\$5.4371	\$0.9771
GRAIN VALLEY R-V	\$3.3200	\$0.9500	\$4.2700	\$3.2271	\$1.7000	\$4.9271	\$0.6571
KANSAS CITY 33	\$4.9500	\$0.0000	\$4.9500	\$4.9599		\$4.9599	\$0.0099
LEE'S SUMMIT R-VII	\$4.3200	\$1.0700	\$5.3900	\$4.2389	\$1.0700	\$5.3089	-\$0.0811

DEFERRED MAINTENANCE

KCPS ELEMENTARY



KCPS ELEMENTARY



KCPS MIDDLE SCHOOL



KCPS HIGH SCHOOL



DEFERRED MAINTENANCE

1. >\$3MM per Facility
 - Complete HVAC system replacements or major upgrades in addition to other measures
2. \$1MM-\$3MM per Facility
 - Moderate HVAC upgrades (not full replacements) and tuning of existing HVAC (Retro-Commissioning) along with other measures (i.e. controls upgrades, roof replacements, etc.)
3. <\$1MM per Facility
 - Tuning of existing HVAC (Retro-Commissioning) along with other minor measures (i.e. minor HVAC upgrades, minor roof replacements, etc.)

Project Type	ESTIMATED HVAC COSTS	ESTIMATED BUILDING COSTS	ESTIMATED TOTAL DEFERRED MAINTENANCE
>\$3MM	\$118,200,000	\$272,000,000	
\$1MM - \$3MM	\$13,400,000		
<\$1MM	\$6,250,000		
TOTAL	\$137,850,000	\$272,000,000	\$409,850,000



Thank You

KANSAS CITY
PUBLIC SCHOOLS



Dr. Phillip Jones
KCPS Grading Policy



KCPS

Grading Policy

Updated July 2023

Academic Division
Department of Curriculum, Instruction
and Professional Development

Updates

- Standards Referenced
Grading Practices: Grading
Categories and Methods
- Grading Guidelines

2. Standards Referenced Grading Practices

UPDATED: Grading Categories:

- Student Engagement, Student Progress and Student Proficiency.

Grading Methods:

- *Grade Levels 2nd - 12th: grade scale changed from “**F = lower than 60%**” to “**F = 40% to 59%**”. (Excluding Montessori)

**Students will not receive a grade lower than 40% on attempted or missing assignments, assessments and activities. This adjustment will prevent students from having grade percentages that are so low, students are unable to improve their overall grade.*

Updated Grading Categories

Student Proficiency *(Previously Assessment)*

- Projects/Labs/Career and Technical Education (CTE) shop activities
- Quizzes (chapter & unit)
- Assessments (chapter, unit, quarter / sem)
- Written/ Video Reports
- Presentations

Student Progress *(Previously Classwork)*

- Classroom Assignments
- Periodic Checks of Journals/Logs/Exit Tickets

Student Engagement *(Previously Homework)*

- Homework
- Class Discussions/Participation
- Class Presentations
- Group Work
- Notebook Checks

Category	Brief Description	Grade Percentage Weights Per Quarter*
Student Proficiency	Includes all written benchmark and summative assessments given to students to be performed on an individualized basis.	50%
Student Progress	Any assignment/activity completed by the student in the classroom (excludes assessments).	40%
Student Engagement	As an extension of classroom learning, any assignment that may be given to students to be performed outside of the classroom and brought back to the teacher at a later date.	10%
Total		100%

Updated Grading Methods

Elementary (K - 1) & Montessori (CH - UE)

Each assignment will be graded on a 4 point system using the following criteria:

4 - I can show others how to do this

3 - I can do this all by myself (Students can perform the skill independently.)

2 - I need more practice (Students can perform the skill but needs more practice to be independent.)

1- I need help (Students cannot perform the skill without assistance.)

NI - Not yet introduced

Non-Montessori Grade Levels 2 - 12

- Competencies/Mastery Learning/Pass or Fail Grading/CTE
- Actual numerical grade earned for the nine weeks
- 100% is the highest grade that can be recorded.
- The lowest passing grade is 60%.

Grading scale:

A = 90 - 100

B = 80 - 89

C = 70 - 79

D = 60 - 69

F = 40*- 59

**all assignments marked as missing will receive a grade of 40% unless marked late (L) excused (E) and cheating (CH).*

3. Grading Guidelines

UPDATED: Minimum number of grades entered per reporting period and Late Work.

Updated Grading Guidelines

- **Grades K-6 (Elementary Sites):** A minimum of 1 grade per each core course every 7 business days.
- **K - 6 (Elementary Sites): Art, Music, and PE/Health, iSpark:** A minimum of 5 grades per grading period.
- **Grades 6 -12 (Middle and High School Sites):** A minimum of 12 grades per subject per quarter, with three in the category of “Student Proficiency”. At least 6 grades must be recorded and reported for the midterm progress report and eligibility progress period each nine weeks.
- **Late Work** - Work completed and turned in after a designated due date and not covered by make-up policy. Late work will be accepted up to the week prior to the last day of the grading period, such as midterm/quarter/semester.
Penalties for late work will be as follows:
 - K-6 (Elementary Sites): No penalties for late work
 - Grades 6-12 (Middle and High School Sites) students will receive a grade equal to AT MOST 70% of the grade the student would have originally earned if the assignment was turned in on the actual due date.

Questions and Wonderings

Share feedback here:



KANSAS CITY
PUBLIC SCHOOLS



Lori Peters
Early College Academy



Early College Academy

- KCPS –Early College Academy is a program dedicated to highly motivated students who earn college credits while in high school. The Early College Academy (ECA) is a partnership between Kansas City Public Schools (KCPS) Metropolitan Community College (PV) and the University of Missouri – Kansas City (UMKC).

- ECA Staff

- LaChandra Calhoun-(816) 604-5440

- Loir Peters- (816) 604-4362

- Kara McGee- (816) 604-4059

- If you have any question please contact us!



KANSAS CITY
PUBLIC SCHOOLS



Manuel L. Clark
DAC Chair



What is DAC?

The DAC addresses school issues and concerns, allows you to share ideas and solve problems cooperatively and helps advise the district's Board of Directors.

What is DAC?

The DAC is open to anyone with a personal stake (stakeholders), living within the KCPS boundaries including:

1. Parents and Family of KCPS Students
2. Alumni of KCPS Schools
3. Teachers and Students of KCPS Schools
4. Community Members in the KCPS District

What is DAC?

DACX - Executive board for DAC which consists of a Chair, Vice-Chair, Treasurer, Recording Secretary, Corresponding Secretary, Parliamentarian, and one Member At-Large.

- Required to attend monthly meetings.
- These volunteers also serve as chairs on our various committees, which meet separately.

What is DAC?

DAC Delegates – parents/caregivers who serve on the board of their local school organization and who were voted by that organization to serve as a DAC delegate.

- They are required to attend the DAC general meetings every other month.
- They get to vote.
- Most importantly, they serve as a liaison between their school and DAC's resources.

What is DAC?

Important date for DAC Delegates

DAC Delegates Special Meeting
October 17, 2023 6–7 PM
Board of Education Building

What is DAC?

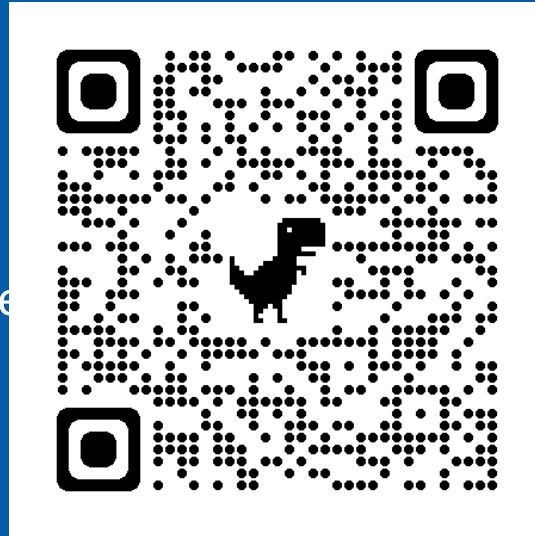
We do the work through several committees that are

OPEN TO ALL

2023-2024 DAC Committees

Standing Committees :

- Athletics & Activities
- Communications
- Membership & Engagement



Temporary Committees

- Bylaws Task Force
- Elections & Nominations

Ways to Get Involved

Parents

- Join your school's parent organization. (We can help you start one if you don't have one already)
- Become a DAC delegate to represent your school.

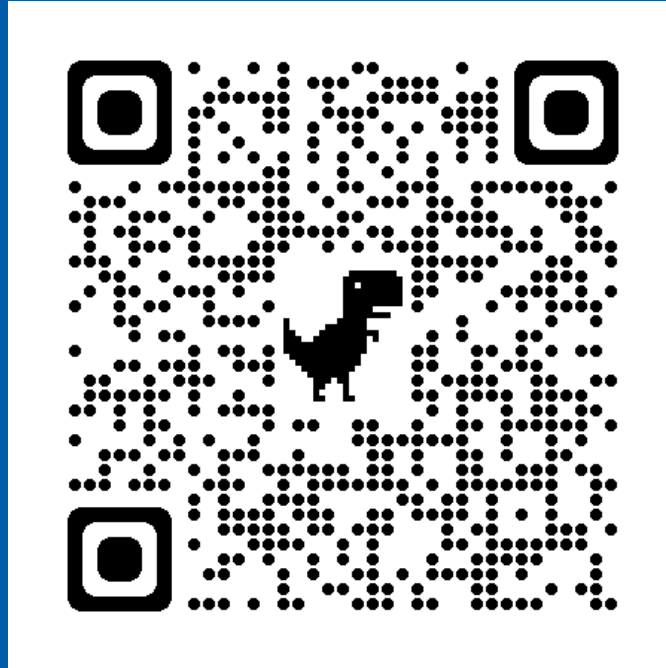
Everyone

- Join a committee that interests you and attend the meetings.
- Spread the word: share our social posts and tag a fellow parent.
- Make sure you are on the email list.

The top right corner of the slide features three parallel diagonal lines. The outermost line is white, the middle line is a thin gold color, and the innermost line is a slightly darker blue, all sloping downwards from left to right.

Literally anyone can get involved...

Questions?



Or email dac@kcpublicschools.org



Kansas City
Public Schools

Thank you!

<https://www.kcpublicschools.org/dac>