

School-to-Home Connection Instructions

Step One: Download the Lexia Reading® Student Software

1. On the computer where you wish to install the Lexia Reading software, open a web browser and navigate to <http://www.lexialearning.com/support/lexiareading/license.html>.
2. You will be brought to a page where you need to accept the Lexia Reading License Agreement. Please read and select Accept to proceed to the Lexia Reading Student Software Downloads page.
3. On this page are downloads for Windows and Macintosh systems. Click the link for the appropriate version for your computer to begin the download process. If you are prompted to Save or Run, choose to Save the download, and to place it on your desktop.
4. After the download finishes, proceed to the installation instructions.

Step Two: Installing Lexia Reading Student Software

Please make sure that your machine meets the system requirements for Lexia Reading Student Software before installation.

System Requirements

Macintosh

- Mac OS X 10.3+
- At least 256 MB of RAM
- At least 500 MB hard drive space
- Speakers or headset (headset recommended)
- 32 MB accelerated video graphics card or better

Windows

- Windows 2000, XP SP2, Vista
- At least 256 MB RAM
- At least 500 MB hard drive space
- Speakers or headset (headset recommended)
- 32 MB accelerated video graphics card or better

STUDENT SOFTWARE INSTALLATION

Click on Agree

Lexia Reading

In order to access your Lexia Reading student software download, please read and accept our license agreement terms by clicking "Agree" below.

Lexia Reading® License Agreement

LEXIA LEARNING SYSTEMS, INC.

This agreement is the complete and exclusive statement between Lexia Learning Systems, Inc. ("Lexia"), and an educational institution or other entity engaged in educational activity ("Licensee") signifying that Licensee has accepted to use or evaluate certain proprietary products of Lexia or an Authorized User duly authorized by Licensee to use such Lexia products, of the rights, obligations and responsibilities of Licensee, each Authorized User of Licensee, and Lexia with respect to the Lexia Application (as defined below).

BY USING THE LEXIA APPLICATION, OR BY AUTHORIZING THE AUTHORIZED USER TO USE THE LEXIA APPLICATION, LICENSEE OR AUTHORIZED USER, AS THE CASE MAY BE, HEREBY AGREES TO UNCONDITIONALLY ACCEPT AND AGREE TO BE BOUND BY THE TERMS AND CONDITIONS OF THIS AGREEMENT. IF LICENSEE OR AN AUTHORIZED USER DOES NOT AGREE TO THE TERMS AND CONDITIONS OF THIS AGREEMENT, LICENSEE OR THE AUTHORIZED USER, AS THE CASE MAY BE, IS PROHIBITED FROM USING THE LEXIA APPLICATION.

For good and valuable consideration, the sufficiency of which is hereby acknowledged, Licensee, each Authorized User and Lexia agree as follows:

1. Definitions. The following definitions will apply to the following terms used in this Agreement:

Lexia Reading® Student Software Downloads

For new installations, or families updating their student software v5.1 or earlier, click the appropriate "Full Download v6.0.1" link for your operating system and country.

For existing customers who are updating their student software v5.1.1, click the appropriate "Update from v5.1.1" link.

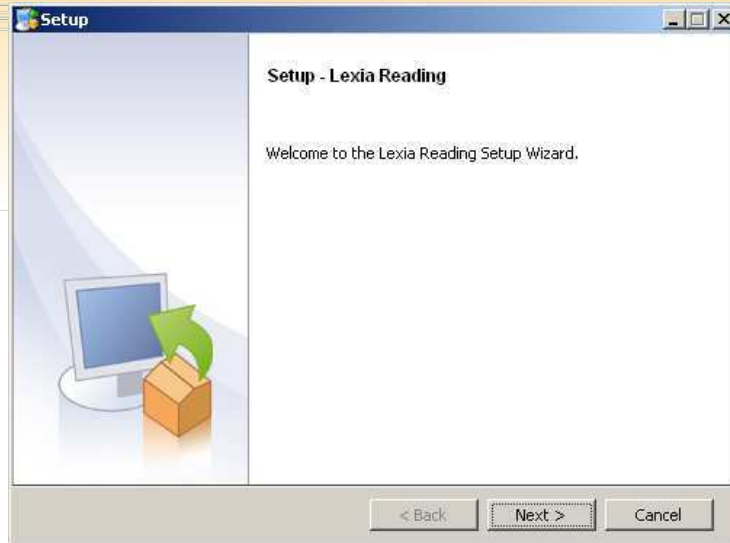
Windows 2000 (SP4)+	Macintosh OS X 10.3+
US Version <ul style="list-style-type: none">Full Download v6.0.1 (220MB, exe)Update from v5.1.1 (38.5MB, exe)	US Version <ul style="list-style-type: none">Full Download v6.0.1 (245MB, dmg)Update from v5.1.1 (43.5MB, dmg) Refer to page 7 for Mac Installation Instructions
International Version <ul style="list-style-type: none">Full Download v6.0.1 (220MB, exe)Update from v5.1.1 (38.5MB, exe)	International Version <ul style="list-style-type: none">Full Download v6.0.1 (245MB, dmg)Update from v5.1.1 (43.5MB, dmg)

~Click on the Run button to launch the installation program

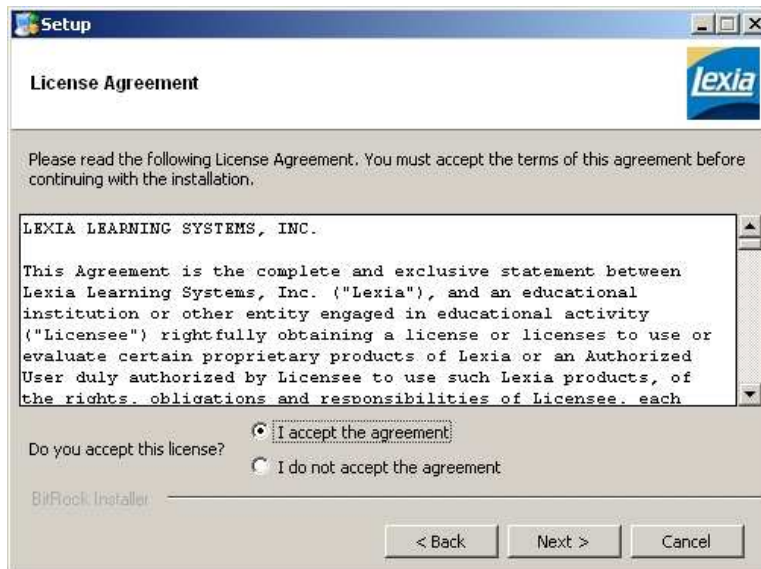


~You may receive this warning message from Windows, this is normal and it is safe to click Run again to continue with the install.





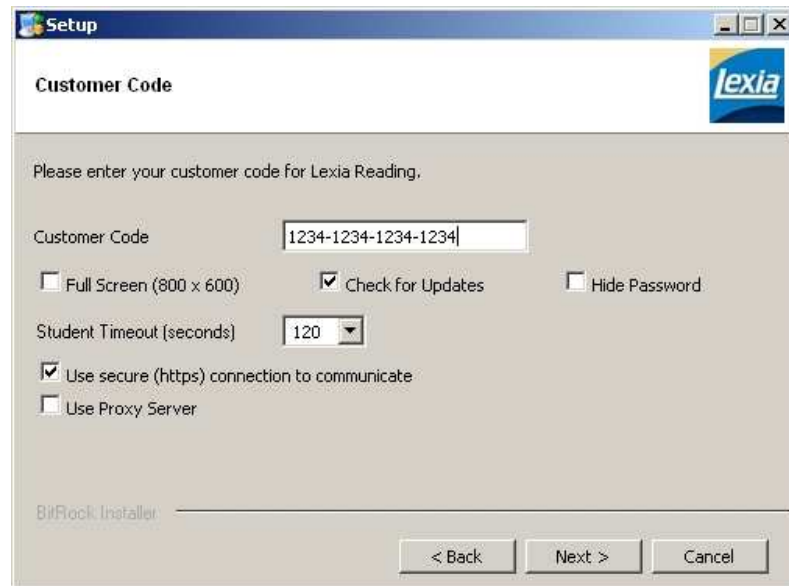
3. Click the Next button.



4. Read the terms of the license agreement, and click "I accept the agreement." If you do not accept the license agreement, the installation will not proceed. Click the Next button.

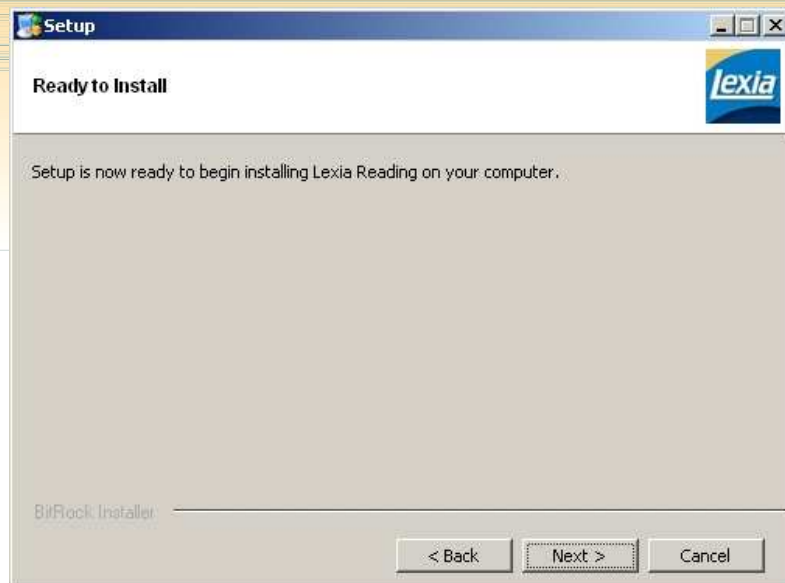


5. *Lexia Reading* will be installed into C:\Program Files\Lexia by default; this location is strongly recommended. (If you wish to select a different location click the folder and select a different location. Click the OK button to select this location) Click the Next button.

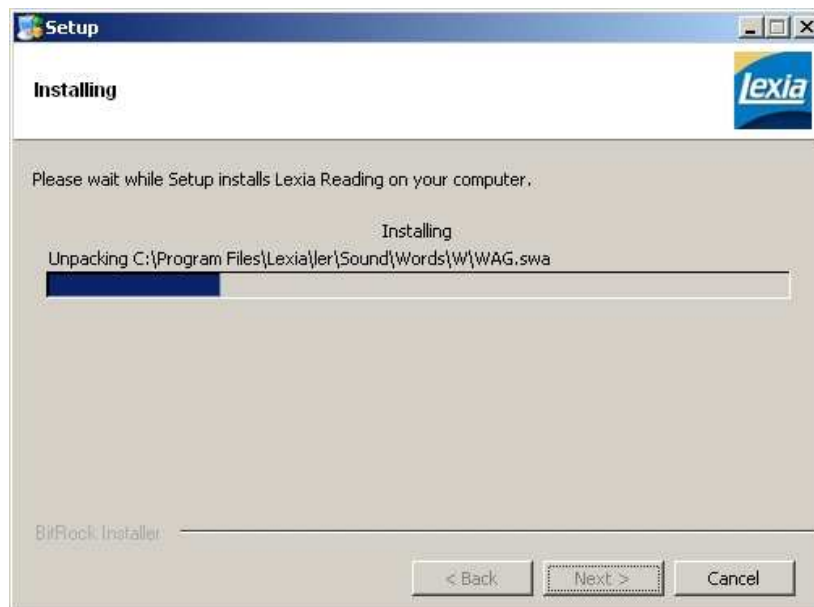


Unit 5 Customer Code – 9998-9112-3999-4240

6. Enter the Unit 5 customer code and leave the remaining as is. Click Next.



7. Setup is now ready to install *Lexia Reading* student software on the machine. Click Next to continue with the installation.



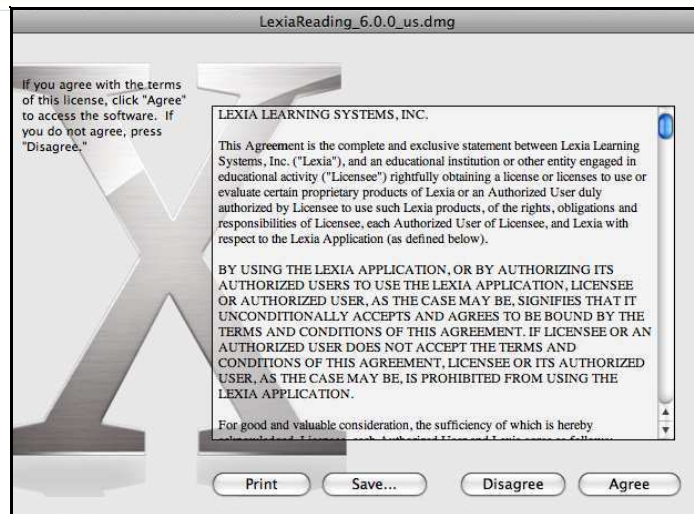
8. You will see a progress bar move across the screen as the installation proceeds. Lexia Reading will create a program group and shortcuts for the application.



9. When you see a message that installation is complete, click on the box labeled "Do you want to launch Lexia Reading now?" and click the Finish button.

MACINTOSH STUDENT SOFTWARE INSTALLATION

1. Download the Macintosh version of the student software to the Macintosh student machine you wish to install *Lexia Reading* on.

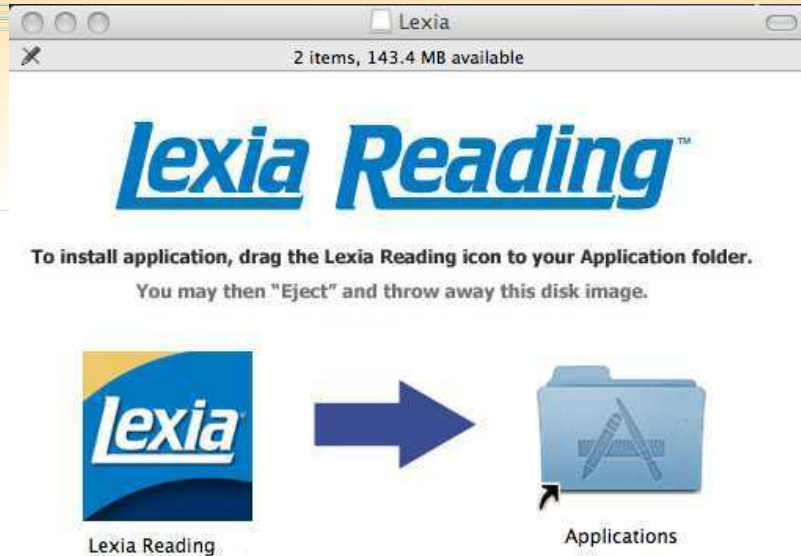


2. Read the terms of the license agreement, and click "Agree." If you do not accept the license agreement, the installation will not proceed.



3. Double-click the Lexia volume on the Desktop to open it if it does not open automatically.


Lexia Reading® Documentation



4. A window will open on the screen. Simply drag and drop the Lexia Reading (Lexia Reading UK for UK versions) icon from the left to the Applications folder on the right of the window. This will install the Lexia Reading student software as Lexia Reading (Lexia Reading UK for UK versions) under Applications.

Using Lexia Reading

1. At the login prompt, enter the student's username and optional password (leave the password field blank if there is no assigned password) and click the green login arrow.
2. Choose from the displayed Lexia Reading programs and activities. These will vary depending upon what the teacher has assigned the student.
3. To exit, continue clicking the red stop sign icon to move backwards through the screens until you exit the program.



A screenshot of a 'Student Login' dialog box. The title bar is blue with a white lock icon and the text 'Student Login'. Below the title bar, there are two text input fields. The first field is labeled 'Username:' and contains the text 'Tree1'. The second field is labeled 'Password:' and is empty. To the right of the password field is a green circular button with a white right-pointing arrow.