

Our Mission

Robbinsdale Middle School

Mission Statement

To provide a safe, positive, caring environment that helps all students develop into principled, lifelong learners and critical thinkers.

◆

Robbinsdale Cooper High School

Mission Statement

To provide a caring and vibrant community where all members are respected, we will educate students to become active, compassionate, principled, critical thinkers.

◆

Robbinsdale Area Schools'

Mission Statement

To inspire and educate all learners to develop their unique potential and positively contribute to their community: See All, Serve All, Support All!

◆

IBO Mission Statement

The International Baccalaureate aims to develop inquiring, knowledgeable and caring young people who help to create a better and more peaceful world through intercultural understanding and respect.

To this end the organization works with schools, governments and international organizations to develop challenging programmes of international education and rigorous assessment.

These programmes encourage students across the world to become active, compassionate and lifelong learners who understand that other people, with their differences, can also be right.

Robbinsdale Middle School
3730 Toledo Avenue North
Robbinsdale, MN 55422
763-504-4800

Principal:
Cedric Fuller 763-504-4801
cedric_fuller@rdale.org
MYP Coordinator:
Casey Strecker 763-504-4804
casey_strecker@rdale.org

◆

Robbinsdale Cooper High School
8230 47th Avenue North
New Hope, MN 55428
763-504-8500

Principal:
Shaunece Smith 763-504-8501
shaunece_smith@rdale.org
IB Coordinator:
Kari Christensen 763-504-8644
kari_christensen@rdale.org

◆

International Baccalaureate Organization (IBO) website:
www.ibo.org/myp

Robbinsdale Area Schools Education Services Center

4148 Winnetka Avenue North
New Hope, MN 55427
763-504-8000
www.rdale.org



International Baccalaureate Middle Years Programme

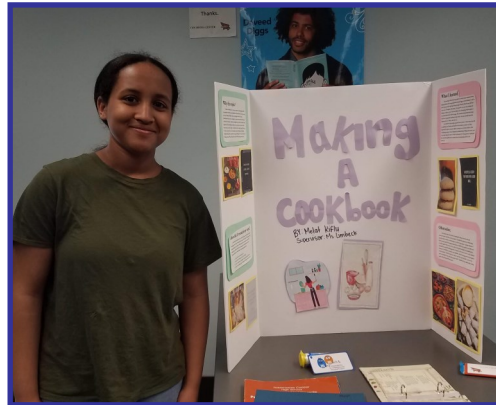
Robbinsdale Middle School & Robbinsdale Cooper High School



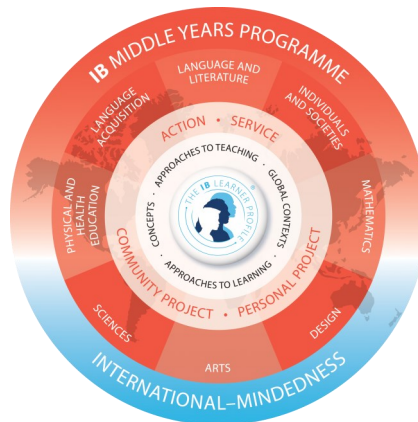
International Baccalaureate Middle Years Programme (IB MYP)

The IB MYP provides a framework of learning that encourages students to become creative, critical and reflective thinkers. The programme emphasizes intellectual challenge, encouraging students to make connections between their studies and the real world. It fosters the development of communication skills, intercultural understanding and global citizenship. The IB encourages learners to strive for a balance of the ten attributes of the Learner Profile:

- ◆ Balanced
- ◆ Open-Minded
- ◆ Communicators
- ◆ Inquirers
- ◆ Knowledgeable
- ◆ Caring
- ◆ Principled
- ◆ Reflective
- ◆ Risk-Takers



The IB MYP is a learner-centered model where students are exposed to a broad-based set of disciplines viewed through conceptualized and contextualized teaching and learning. Students are called to do community service all five years of the programme. The culminating project for the programme is the Personal Project, a research-based project of the student's choosing and mentored by a selected staff member.



International Baccalaureate Middle Years Programme (IB MYP)

- ◆ Addresses students' intellectual, social, emotional and physical well-being
- ◆ Enables students to understand the complexities of our world
- ◆ Provides students with the skills and attitudes they need to take responsible action for the future
- ◆ Ensures breadth and depth of knowledge and understanding through the eight subject areas
- ◆ Requires second language acquisition (Spanish or French) for all students
- ◆ Supports students in understanding their own culture and that of others
- ◆ Provides the opportunity for students to complete an independent project around an area of personal interest
- ◆ Requires collaboration of teachers across the grade levels
- ◆ Is school-wide at both RMS and CHS

What does IB MYP look like at RMS and CHS?

- ◆ Teachers are trained in the best practices upon which the IB MYP is based.
- ◆ Grades are based on MYP subject criteria.
- ◆ Student learning includes real-life situations.
- ◆ IB MYP unit planners are aligned to district/state standards.
- ◆ Students acquire skills necessary for