



Mountain Lakes School District

SUPERINTENDENT/ASSISTANT SUPERINTENDENT UPDATE

Monday, September 20, 2021

Covid-19 School Testing Program



Through this program, we will be able to identify COVID-19 cases quickly and early, which can help us stop an outbreak before it happens.

For parents who opt their children into the program:

- Free, regularly (weekly) asymptomatic testing
- Testing of “close contacts”
- Symptomatic testing

Who else will be tested?

- We will offer testing to everyone—all students and staff—even if they don't have symptoms of COVID-19.

How is the testing done?

- Outside vendor vetted by the state will set up “shop” in our district
- nasal swab or saliva test

Where and when is the testing done?

- Location and Time TBD

How can I be sure my child’s information will be protected?

- Sharing of information about your child will only be done for public health purposes and in accordance with applicable law and policies protecting student privacy and data.

Elementary and
Secondary School
Emergency Relief
(ESSER)



Three Phases of Funding



ESSER I

Coronavirus Aid, Relief, and Economic Security (CARES) Act

Issued: March 2020

Awarded Amount: \$33,291.00

Fund Window: by September 30, 2021



ESSER II

Coronavirus Response and Relief Supplemental Appropriations (CRRSA) Act

Issued: March 2021

Awarded Amount: \$145,482

Fund Window: by September 30, 2022



ARP ESSER

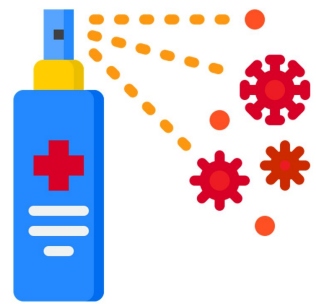
American Rescue Plan (ARP) Act

Issued: August 2021

Awarded Amount: Verifying Final Numbers*

Fund Window: by September 30, 2023

How can we use ESSER funds?



- **Preparedness and response to COVID-19**
 - Minimize the spread of COVID-19 and prepare for future outbreaks.



- **Promote Student Learning**
 - Develop learning accelerated opportunities for students.



- **Mental health support**
 - Offer supports for students and staff to address social and emotional needs.

Our Guiding Principles

- Ensure the safety of all students and staff.
- Develop a differentiated approach to ensure equitable opportunities for ALL students.
- Develop a picture of student academic readiness and social emotional readiness of ALL students.
- Ensure monies are allocated over multiple academic years for continuous learning acceleration of ALL students.

Programs In Place & Under Development

- Purchase of PPE
- Thrive Counselor
- Data Platforms: *LinkIt, Dibels, IXL*
- Learning Acceleration After School Program
(available to ALL students Grades 1-12)

State Testing: Start Strong Assessments



Start Strong Assessment: Overview

Given Across Content Areas



- English language arts (ELA) Grades 4-10
- Mathematics grades 4-8, Algebra 1, Geometry and Algebra 2.
- Science Grades 6, 9 and 12.

Standards Aligned



- Aligned to a small set of standards from the year before to help educators the level of support students need at the beginning of the school year.

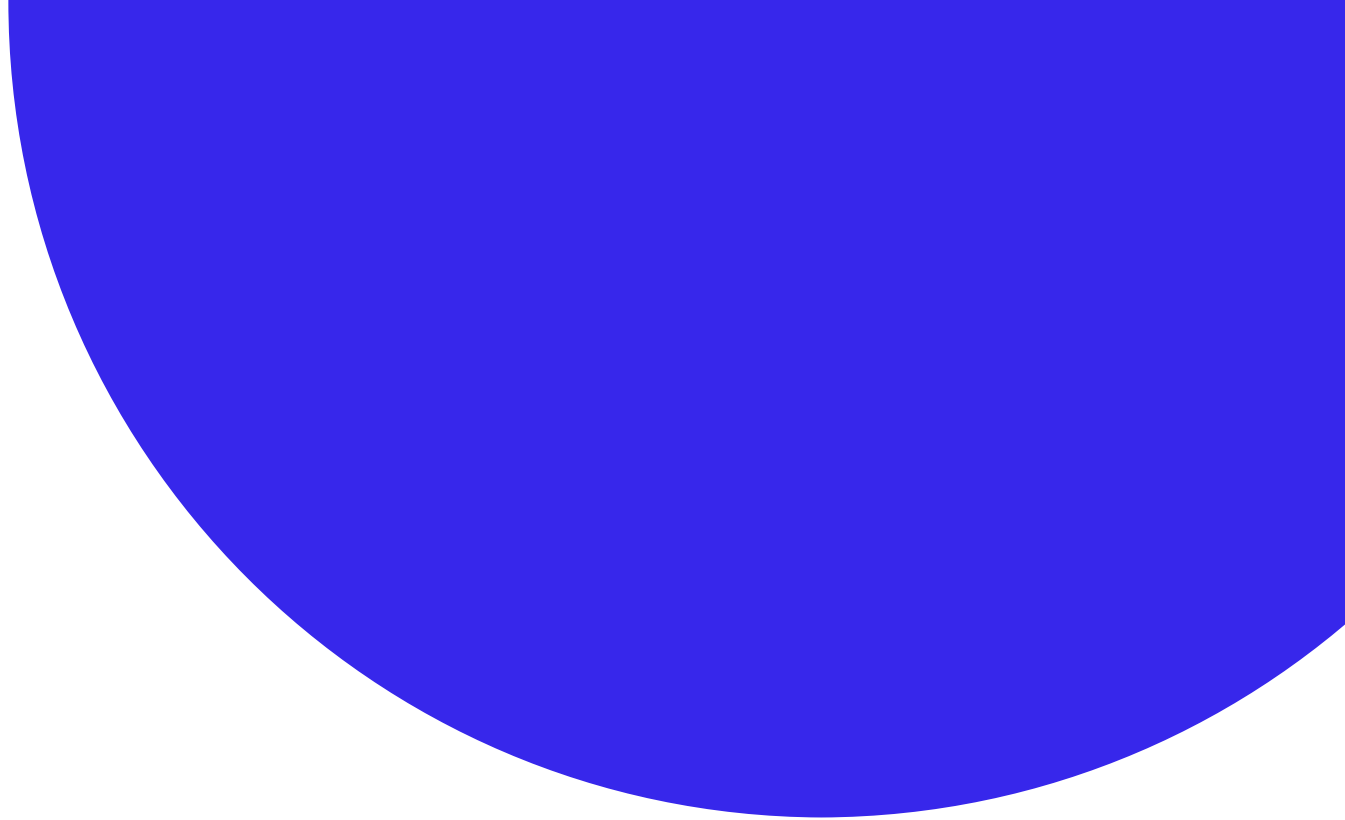

Brief



- Each test can be given in a single class period (45- 60 minutes).
- All test items are machine-scorable (no open-ended questions).
- Building principals will share schedules (October 4-22)

General Updates and Reminders





Strategic Planning Meeting Dates and Times (Location TBD):

Wednesday, October 6th; 7-9 PM

Monday, November 1st; 7-9 PM

Tuesday, December 14th; 7-9 PM

Superintendent Coffee Talks for 2021-22 **(Updated)**

Thursday, October 21st - 9:00 AM

Tuesday, December 14th - 12:00 PM **(VIRTUAL)**

Wednesday, February 9th - 7:00 PM

Wednesday, April 27th - 9:00 AM **(VIRTUAL)**

LOCATION: MLHS Media Center

COVID-19 Certification

- In an effort to ensure our school community remains vigilant against the spread of COVID-19, please complete this [form](#) certifying that you will screen your child on a daily basis for symptoms of COVID-19.
- Please keep your child home if any of the criteria on the Covid-19 Daily Screening are met.
- Submission of this screening certification is only required once for the 2021-22 school year. This certification will replace last year's daily screening COVID-19 questionnaire.