



# **2018-19 California Assessment of Student Performance and Progress (CAASPP) Board Update**

Linh Nguyen

Assistant Superintendent of Ed Services

November 7, 2019



# Strategic Plan Alignment



**Goal 1 - Next Generation Student:** We will provide rigorous, highly engaging learning opportunities that will prepare all students to be successful global learners, contributors and leaders.



**Goal 2 – Student Learning and Achievement:** Every student will achieve. We will provide and support engaging, high quality instruction that promotes active learning and achievement for all students. Achievement gaps will be eliminated.



# CAASPP

Cambrian School District

# What is CAASPP?



- **CA**lifornia **A**ssessment of **S**tudent **P**erformance and **P**rogress
- The “umbrella” of assessments in public education in California
- Smarter Balanced Assessments
  - ELA and Mathematics in grades 3 - 8 and 11
  - **CA**lifornia **A**lternate **A**ssessment (CAA) ELA and Math grades 3-8 and 11
  - **CA**lifornia **S**cience **T**est (CAST) or California Alternate Assessment (CAA) in Science in grades 5, 8, and 10
- Smarter Balanced Assessments in English Language Arts and Math include:
  - Computer Adaptive Test
  - Performance Task

# What is CAASPP?



- Student Score Reports include:
  - Growth from year to year
  - Overall performance level and results by claim area
    - ELA: Reading, Writing, Listening, Research/Inquiry
    - Math: Concepts & Procedures, Problem Solving & Modeling & Data Analysis, Communicating Reasoning
  - Information to help parents/guardians and teachers work together to improve student learning
- Scores for California Science Tests (CAST) are not yet available and will be provided in late winter



# Results

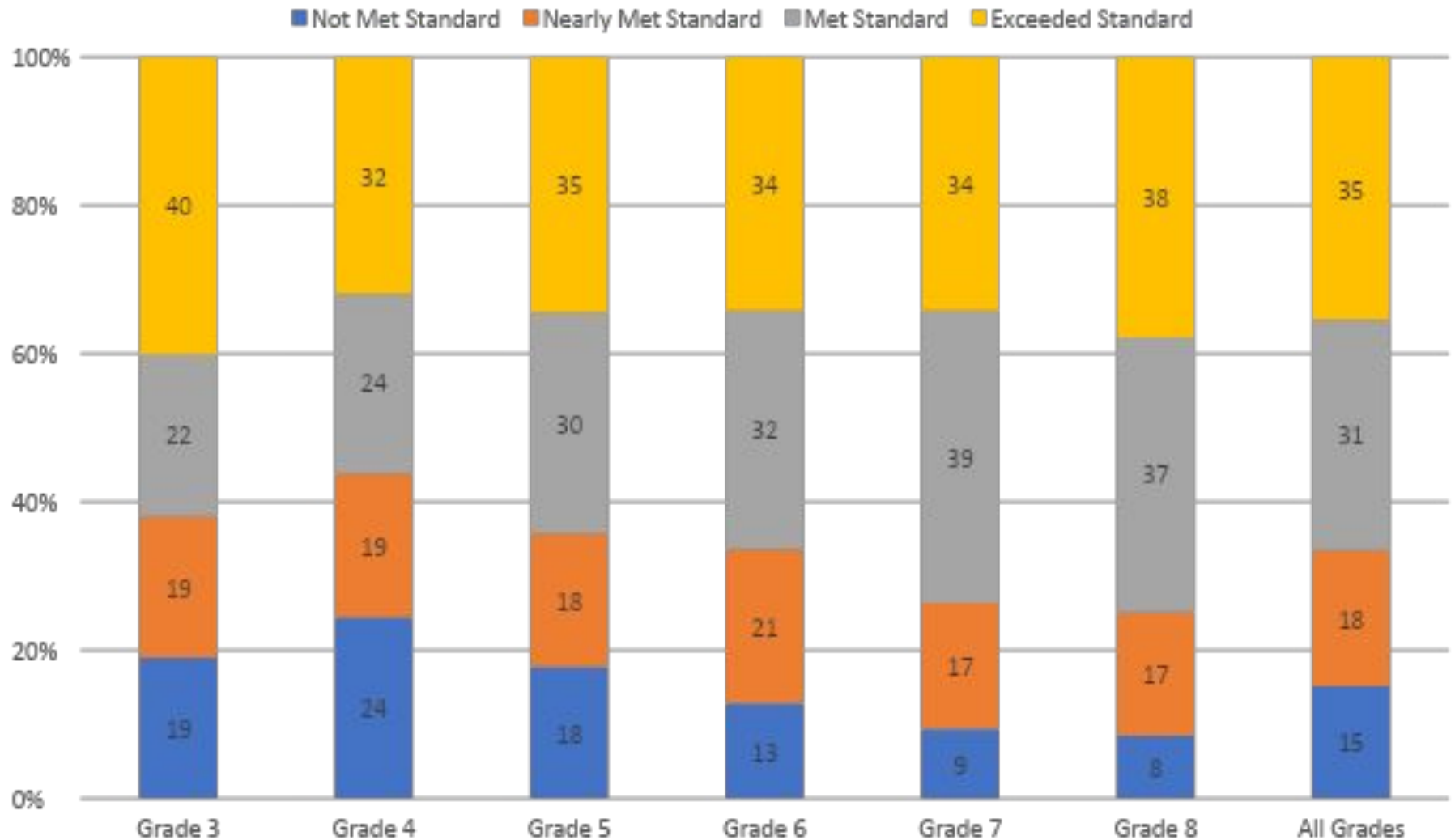
Cambrian School District



## CSD Demographic Data (Testing Grades Only)

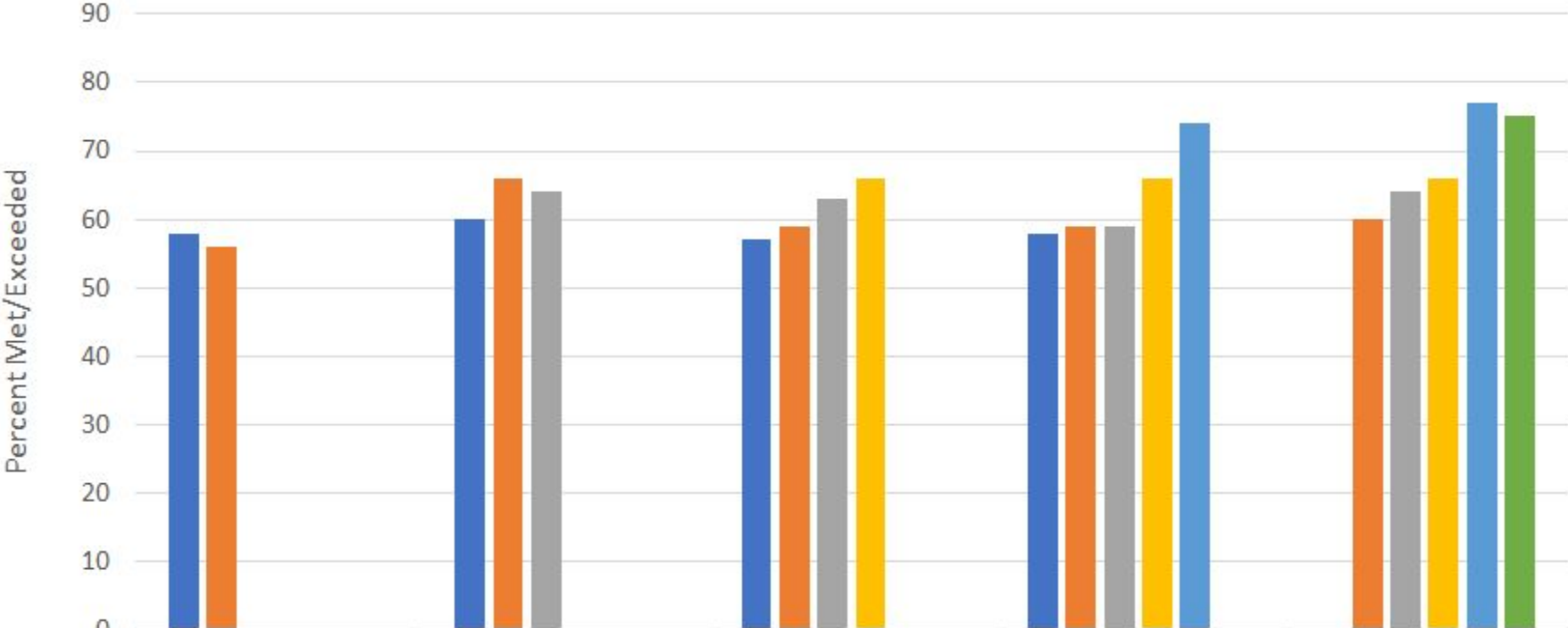
	<b>2014-15</b>	<b>2015-16</b>	<b>2016-17</b>	<b>2017-18</b>	<b>2018-19</b>
<b>English Learners</b>	280 (12%)	262 (12%)	218 (9%)	204 (9%)	205 (9%)
<b>Reclassified Fluent Proficient</b>	198 (9%)	242 (11%)	325 (14%)	371 (16%)	350 (16%)
<b>Economically Disadvantaged</b>	423 (19%)	433 (20%)	399 (17%)	461 (20%)	418 (19%)
<b>Students with Disability</b>	257 (11%)	273 (12%)	281 (12%)	310 (13%)	305 (14%)
<b>Asian</b>	382 (17%)	390 (18%)	405 (18%)	397 (17%)	403 (18%)
<b>Black/Afr. Amer.</b>	73 (3%)	67 (3%)	65 (3%)	65 (3%)	59 (3%)
<b>Filipino</b>	61 (3%)	54 (2%)	44 (2%)	38 (2%)	39 (2%)
<b>Hispanic/Latino</b>	556 (25%)	558 (25%)	568 (25%)	556 (24%)	548 (24%)
<b>White</b>	1037 (46%)	1024 (46%)	1042 (45%)	1043 (45%)	967 (43%)
<b>2 or More Races</b>	68 (3%)	100 (5%)	155 (7%)	187 (8%)	190 (8%)
<b>Total Enrollment</b>	2263	2215	2314	2302	2241

# 2019 CAASPP ELA/Literacy Achievement Level Percent Distribution by Grade Level



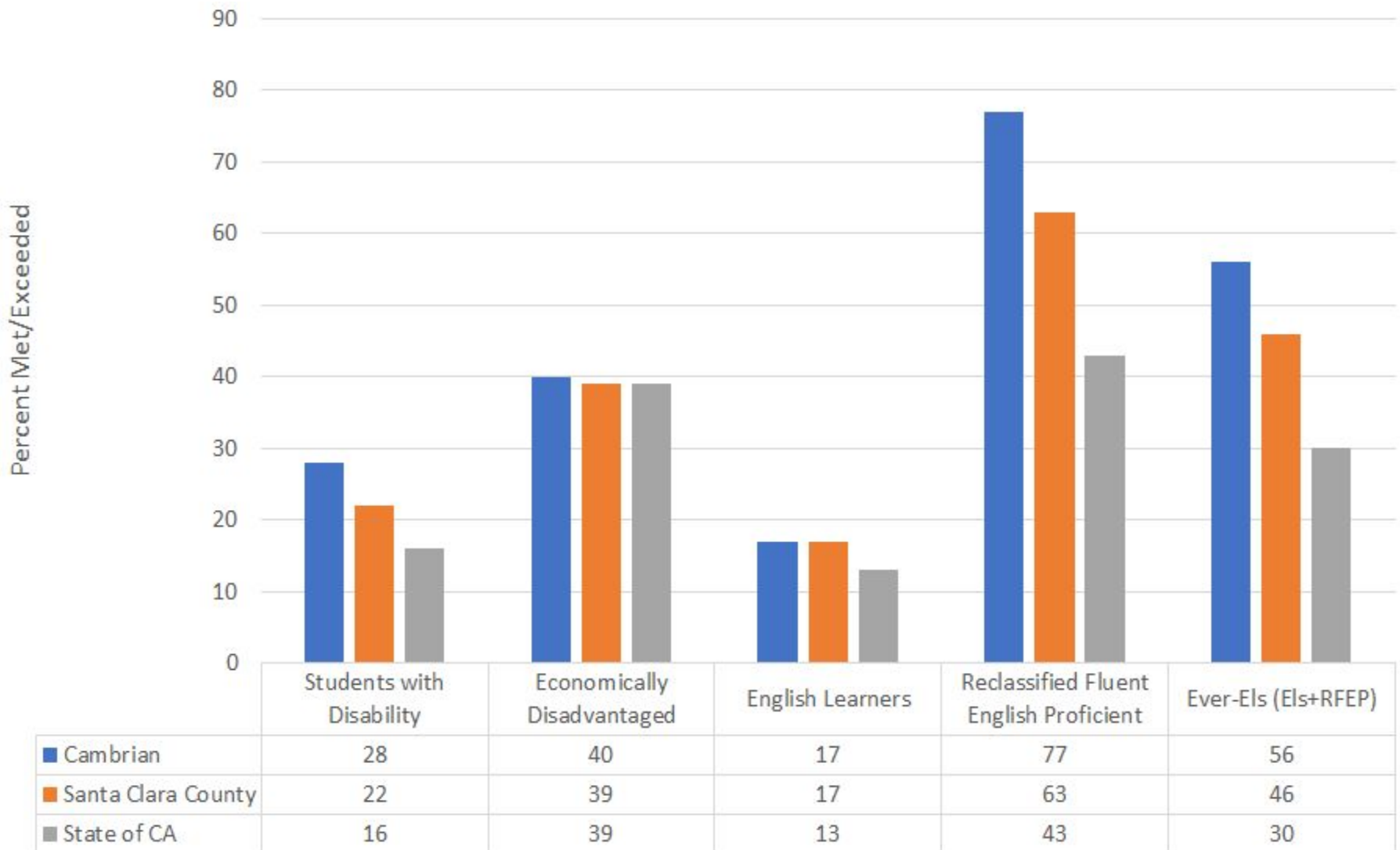


# CAASPP ELA/Literacy Cohort Change Over Time by Grade Level

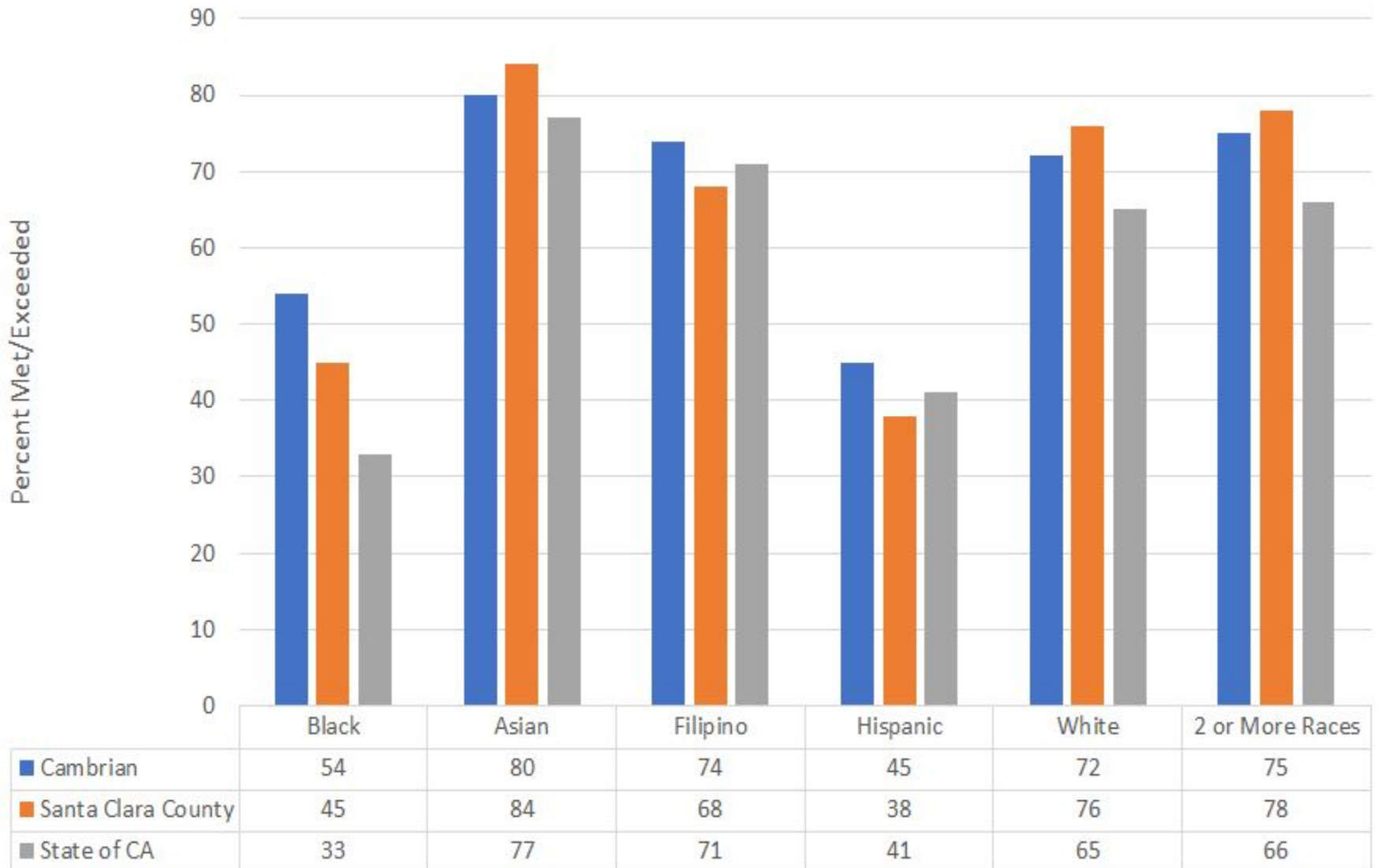


	Grade 4 (2019)	Grade 5 (2019)	Grade 6 (2019)	Grade 7 (2019)	Grade 8 (2019)
Grade 3	58	60	57	58	
Grade 4	56	66	59	59	60
Grade 5		64	63	59	64
Grade 6			66	66	66
Grade 7				74	77
Grade 8					75

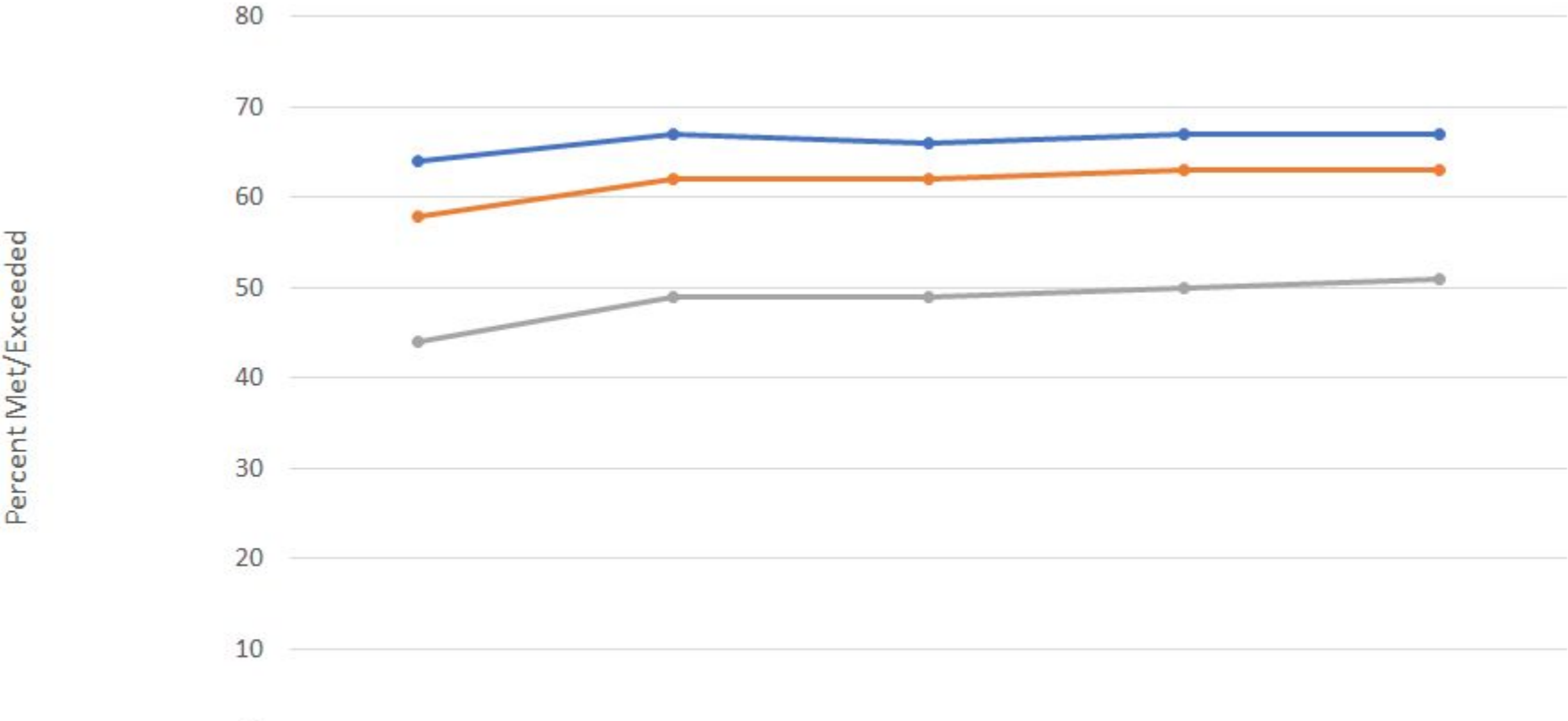
# 2019 CAASPP ELA/Literacy Cambrian, Santa Clara County, State by Program Student Groups



# 2019 CAASPP ELA/Literacy Cambrian, Santa Clara County, State by Ethnicity

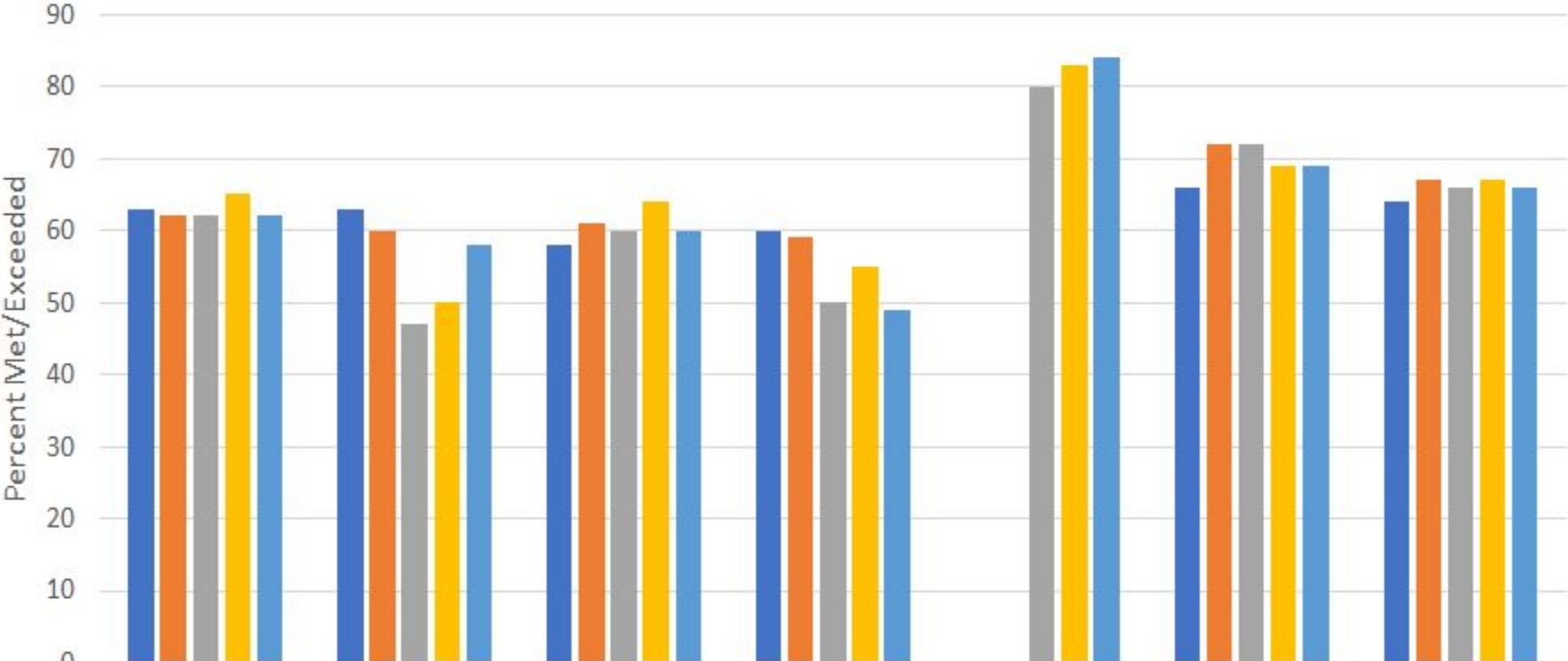


# CAASPP ELA/Literacy Change Over Time Cambrian, Santa Clara County, State



	2015	2016	2017	2018	2019
— Cambrian	64	67	66	67	67
— Santa Clara County	58	62	62	63	63
— State of CA	44	49	49	50	51

# CAASPP ELA/Literacy Change Over Time by School Site & District



	Bagby	Fammatre	Farnham	Sartorette	Steindorf	Price	All Schools
2015	63	63	58	60		66	64
2016	62	60	61	59		72	67
2017	62	47	60	50	80	72	66
2018	65	50	64	55	83	69	67
2019	62	58	60	49	84	69	66

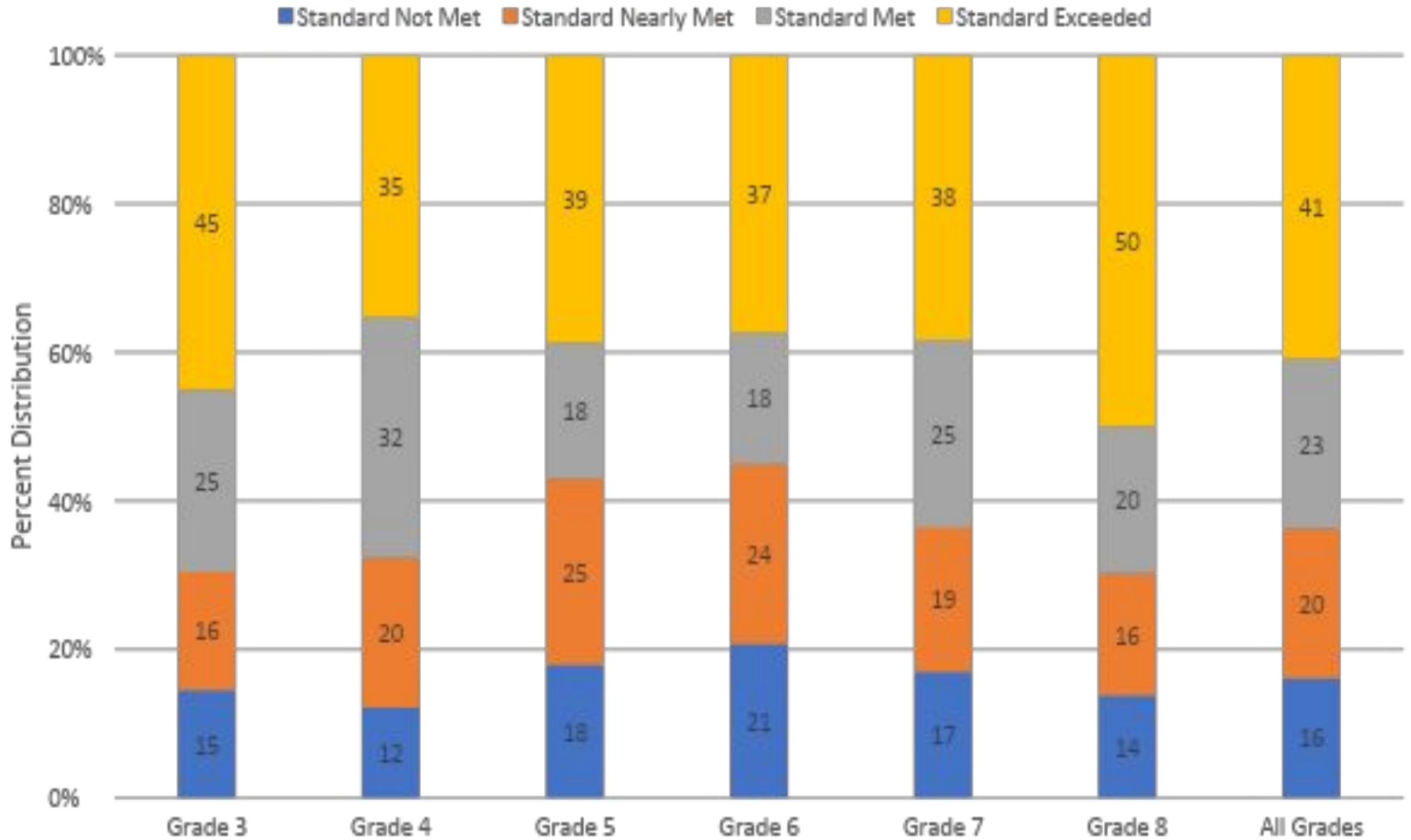
# 2019 CAASPP ELA/Literacy Highlights of District Wide Results



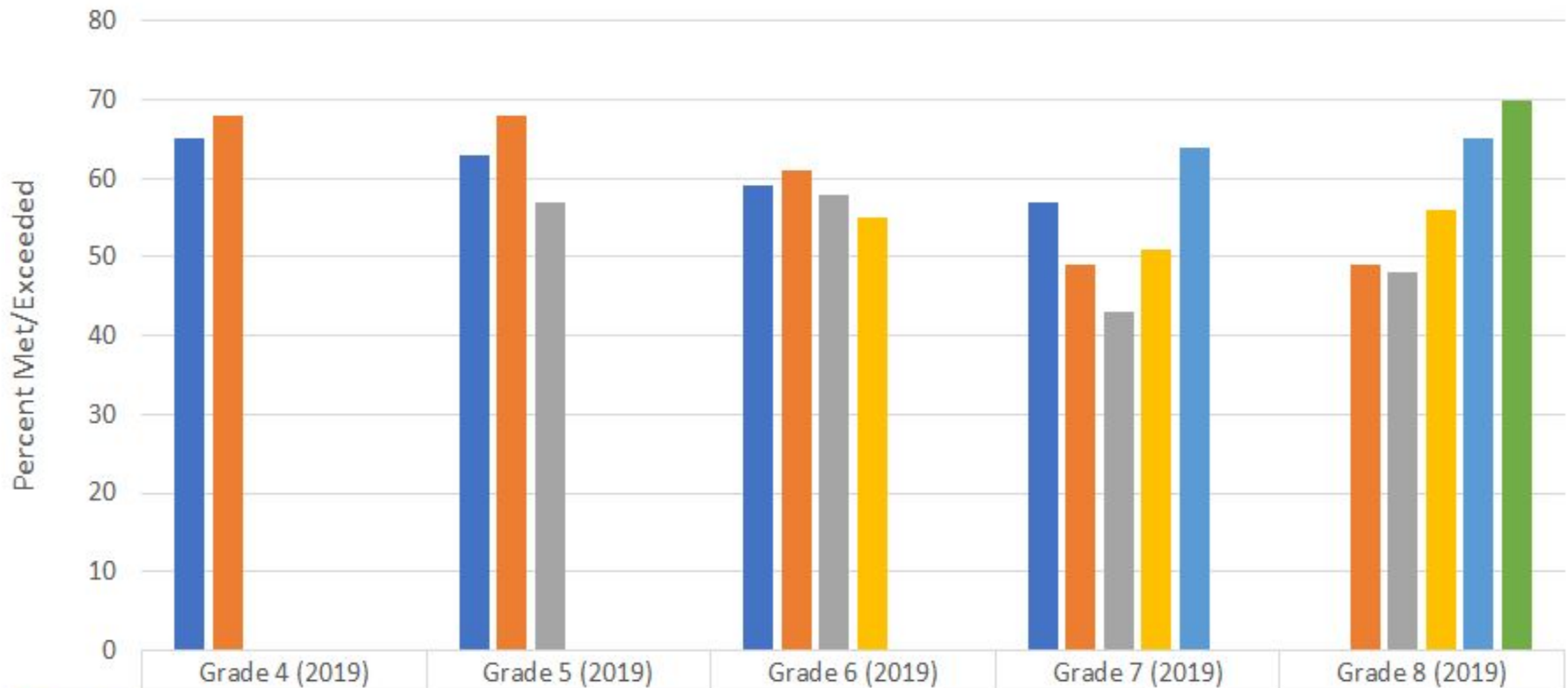
## **67% of CSD students reached the Standard Met or Standard Exceeded achievement levels compared to 63% of Santa Clara County and 51% of students statewide**

- Between 2015 & 2019, the overall percentages of CSD students meeting or exceeding standard climbed by **2.48** percentage points in ELA for all students compared to the overall percentages of their county and statewide student counterparts with a **5.03** percentage points climb and a **6.87** percentage points climb, respectively.
- With the exception of English Learners, all other program student groups met or exceeded standard at higher rates than their county and statewide counterparts on the ELA assessment.
- With the exception of Asian, White, and 2 or More Races, all other CSD's racial/ethnic student groups met or exceeded standard at a higher rates than their county's counterparts on the ELA assessment.
- However, the overall percentages of CSD's students met or exceeded standards at higher rates than their county and statewide counterparts in the ELA assessment between 2015 & 2019.
- The largest grade-level gains in terms of students meeting or exceeding standard over the two prior years' grade levels occurred at gr. 7 (74% for gr. 7 in 2019 vs. 66% for gr. 6 in 2018 & 59% for gr. 5 in 2017).
- For students in grade 8, since SBA has been operational, based on the grade-level gains achieved over the last five years (60% for gr. 4 in 2015 vs. 75% for gr. 8 in 2019), the 15 percentage gains may be evident that the vertically calibrated growth model is working.

# 2019 CAASPP Mathematics Achievement Level Percent Distribution by Grade Level



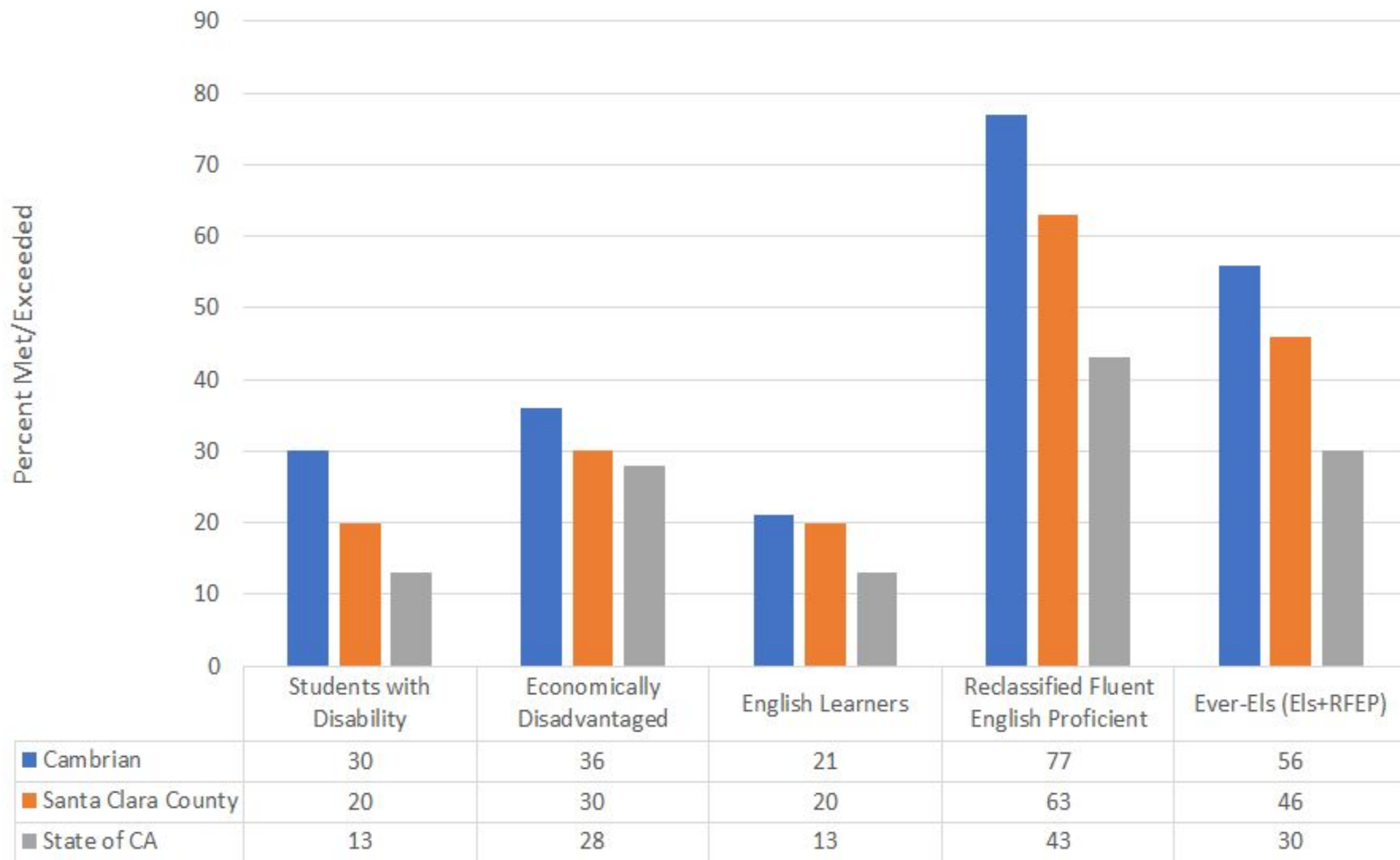
# CAASPP Mathematics Cohort Change Over Time by Grade Level



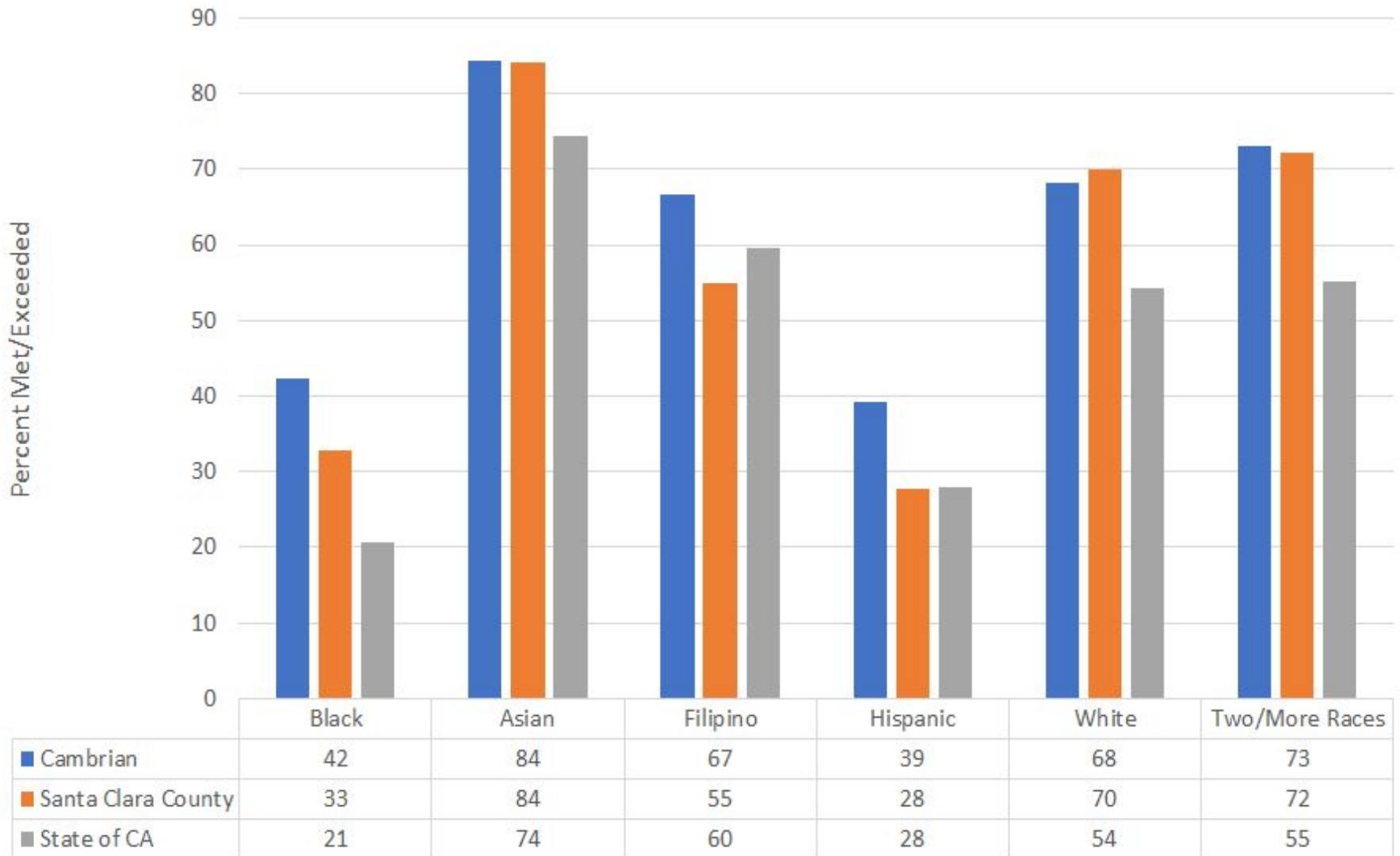
	Grade 4 (2019)	Grade 5 (2019)	Grade 6 (2019)	Grade 7 (2019)	Grade 8 (2019)
Grade 3	65	63	59	57	
Grade 4	68	68	61	49	49
Grade 5		57	58	43	48
Grade 6			55	51	56
Grade 7				64	65
Grade 8					70



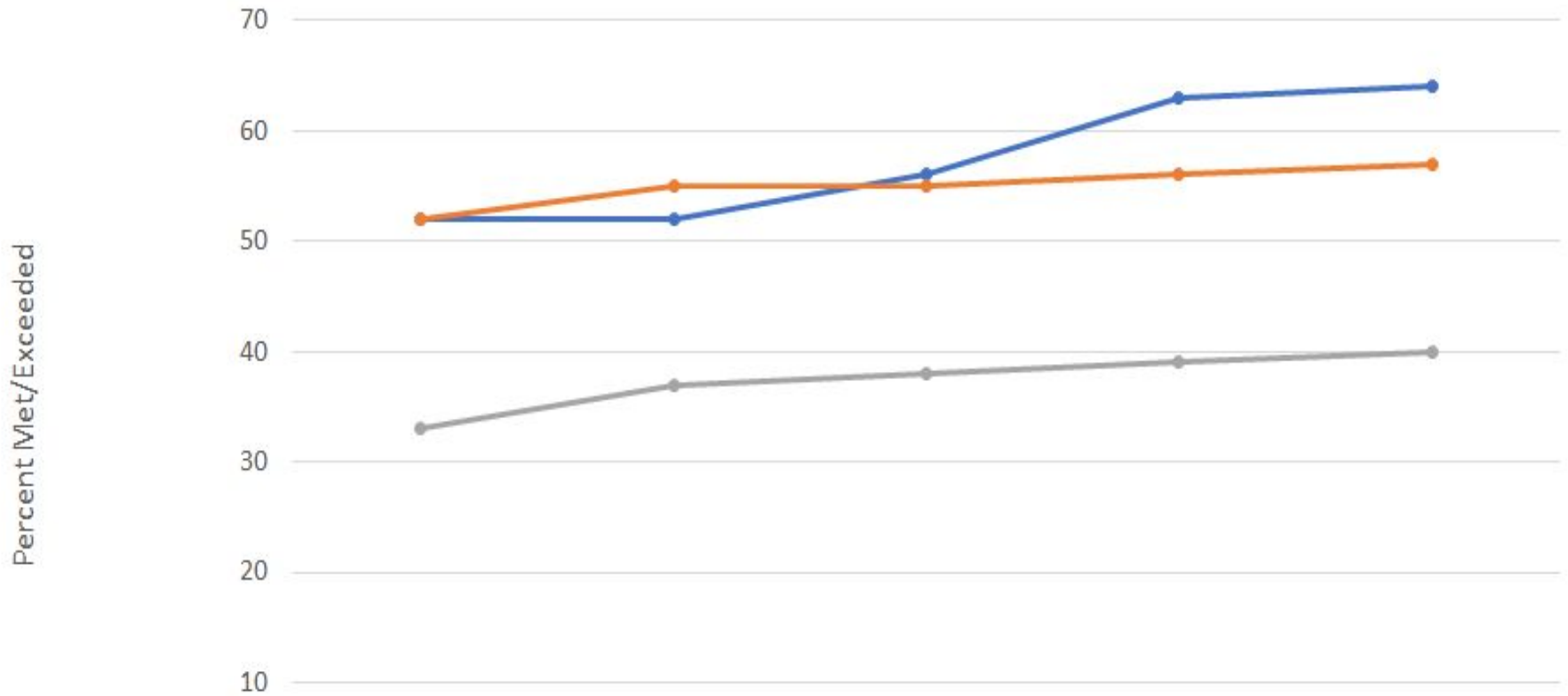
# 2019 CAASPP Mathematics Cambrian, Santa Clara County, State by Program Student Groups



# 2019 CAASPP Mathematics Cambrian, Santa Clara County, State by Ethnicity

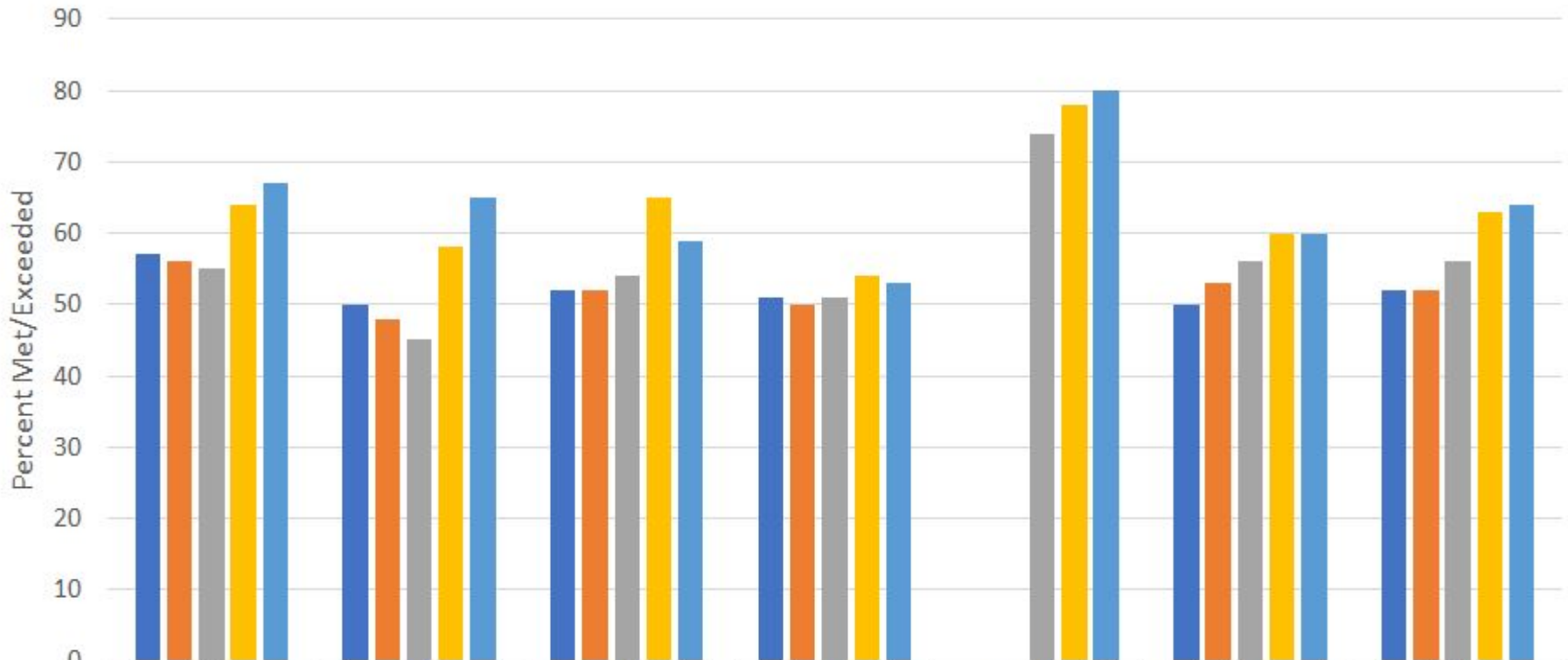


# CAASPP Mathematics Change Over Time Cambrian SD, Santa Clara County, State



	2015	2016	2017	2018	2019
— Cambrian	52	52	56	63	64
— Santa Clara County	52	55	55	56	57
— State of CA	33	37	38	39	40

# CAASPP Mathematics Change Over Time by School Site & District



	Bagby	Fammatre	Farnham	Sartorette	Steindorf	Price	All Schools
2015	57	50	52	51		50	52
2016	56	48	52	50		53	52
2017	55	45	54	51	74	56	56
2018	64	58	65	54	78	60	63
2019	67	65	59	53	80	60	64

# 2019 CAASPP Mathematics Highlights of District Wide Results



## **64% of CSD students reached the Standard Met or Standard Exceeded achievement levels students compared to 57% of Santa Clara County and 40% of students statewide**

- Between 2015 and 2019, the overall percentages of CSD students meeting or exceeding standard climbed by **12** percentage points in math for all students. All CSD students met or exceeded standards at higher rates than their County and statewide counterparts in the math assessment.
- There is substantial achievement gaps between program student groups compared to all students. However, all CSD's program student groups met or exceeded standard at higher rates than their county and statewide counterparts on the Math assessment.
- With the exception of White student group, all other CSD's racial/ethnic student groups met or exceeded standard at a higher rates than their county and statewide counterparts on the Math assessment.
- With the exception of 2016, between 2015 and 2019, all CSD students met or exceeded standard at a higher rates than their county and statewide counterparts on the math assessment.
- The largest grade-level gains in terms of students meeting or exceeding standard over the two prior years' grade levels occurred at grade 7 (64% for grade 7 in 2019 vs. 51% for grade 6 in 2018 and 43% for grade 5 in 2017). Coincidentally, the largest grade-level losses in terms of students meeting or exceeding standard over the two prior years' grade levels occurred with same cohort (43% for grade 5 in 2017 vs. 49% for grade 4 in 2016 and 57% for grade 3 in 2015).



# Next Steps

Cambrian School District

# Actions with Results



- Implementing the Multi-tiered System of Supports
- “Collective Teacher Efficacy”
  - Professional Learning Communities
  - Data Analysis and SMART Goals
- Data-driven instructional & curriculum decision making
  - Ongoing formative assessment in ELA & Math
  - High impact instruction
  - Curriculum aligned to state standards, with a focus on the new ELA/ELD curriculum for Tk-5 and 6-8
- Focus Targeted Instruction
  - Specific Areas (Claims) in ELA/Literacy & Math
  - Specific target student groups - close the achievement gap
  - Tier II & ELD Instructional Support
- Developing “Assessment Capable Learners”
- Providing Additional & Extended Learning Opportunities for All student