



WAUNAKEE COMMUNITY SCHOOL DISTRICT DESIGN AND CONSTRUCTION UPDATE

WORKING TOGETHER for a STRONG FUTURE



Vol. 05 | SEPTEMBER 2023

During the month of August, members of the Waunakee Community School District Board of Education paid a special visit to the new Heritage Elementary School site to review the ongoing construction progress. Now, we are excited to share this remarkable progress with all of you!

The dedicated craftworkers have been hard at work this summer to bring Heritage Elementary school to life. Foundation work, including footings, interior pads, and foundation walls, is nearing completion. Masonry fire walls and the elevator shafts, are finished. Underground plumbing and electrical work wrapped up in early September. In the fourth grade classrooms, structural steel and metal decking have been installed with exterior framing in progress, marking significant milestones within the project.

The design process has continued throughout the summer. The main entrance and library will feature columns designed to resemble branches, gracefully angling upward. Each grade level boasts a unique color palette, all of which tie into the overarching theme for the school. To offer you a sneak peek, preview some of the color palettes below!



UPCOMING MILESTONES



**Main entrance
masonry and steel**



**Slab over metal deck at
4th grade classrooms**



**Roofing to begin toward
the end of September**



**Complete all slab
on grade pouring**

DID YOU KNOW?

The elementary school will use geothermal energy to help heat and cool the building. There are 77 new wells being dug and each well runs 500 feet into the earth.

For questions about the facilities design/construction process:

www.waunakee.k12.wi.us/community/fall-2022-referendum

wcsd_fall2022@waunakee.k12.wi.us

608.849.2000 - ext. 8491



VOGEL
BROS. BUILDING CO.



WAUNAKEE COMMUNITY SCHOOL DISTRICT DESIGN AND CONSTRUCTION UPDATE



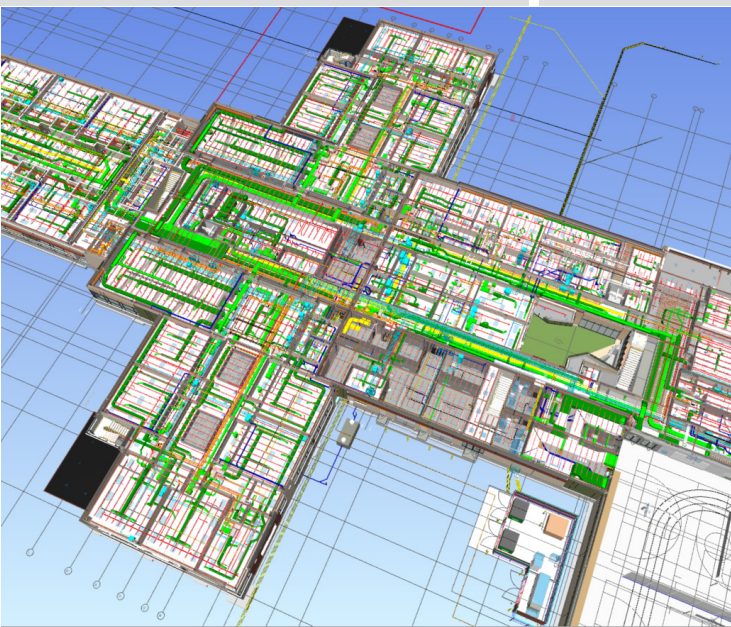
Full Masonry Wall



4th Grade Classrooms



Exterior Framing



BIM MODELING

Virtual design and construction through Building Information Modeling (BIM) allows customers and team members of a project to view the digital and functional characteristics of a building before it is built. Some of the ways BIM is used at Heritage Elementary School include:

- building frame
- exterior and interior walls
- visual walkthrough of space
- constructability review
- MEPF coordination

Only virtual engineering tools like BIM can give you a sneak peek at what your project may look like.

LOCAL PARTNER SPOTLIGHT

Endres Manufacturing is a family owned, 4th generation run AISC Certified, WBE Certified, Steel Manufacturing Company, located in Waunakee. Endres Manufacturing has the ability to handle a wide variety of projects from stadiums to schools to steel beams for individual home builders. They are specialists in decorative railings and have the ability to weld most grades and types of metals depending on the project needs.

Endres Manufacturing employees visited the jobsite in August. They were able to see the parts they manufactured and where they were being installed at the jobsite. They supplied 650 tons of structural steel, 275 tons of joist, 160,000 sf of metal deck, 5 steel stairs, and 1,000 LF of railings.

Thank you to the Endres team for their hard work!



For questions about the facilities design/construction process:

www.waunakee.k12.wi.us/community/fall-2022-referendum

wcsd_fall2022@waunakee.k12.wi.us

608.849.2000 - ext. 8491



VOGEL
BROS. BUILDING CO.