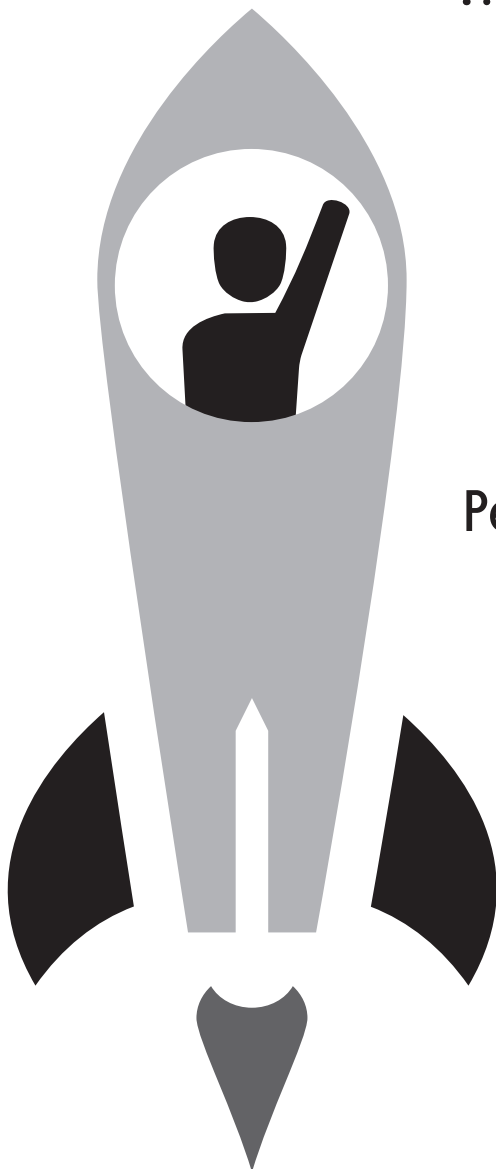


Reaching for the **FUTURE**

.....
From School to Adult Life



A Resource Guide for
People with Disabilities

Eleventh Edition

Transition Planning is a process that begins in middle school to develop a plan for students to achieve more rewarding adult lives. This guide provides resource information for people with disabilities. It lists Rockland County agencies that provide direct services or information in the areas indicated. This guide is an invaluable resource for individuals with disabilities, parents, school personnel, and adult service providers addressing the issues of transition.*

The Rockland Transition Consortium was organized at the beginning of the 1991-1992 school year to develop a reference guide to help in the transition process. This edition was prepared by members of the Rockland Transition Consortium to provide a useful tool in transition planning. For information about the Rockland Transition Consortium, contact Mary Ellen Urinyi or Dawn Kitz at Rockland BOCES at (845) 627-4790.

For a complete listing of agencies listed in this guide, please see the back pages of the guide.

ROCKLAND COUNTY SCHOOL DISTRICTS

For information, contact the appropriate Special Education or Pupil Personnel Office at the numbers listed below and ask for the person who handles transition planning:

DISTRICT CONTACTS

Clarkstown.....	(845) 639-6482.....	www.ccsd.edu
East Ramapo.....	(845) 577-6040.....	www.ercsd.org
Nanuet.....	(845) 627-9817.....	www.nanuetsd.org
North Rockland.....	(845) 942-3430.....	www.northrockland.org
Nyack.....	(845) 353-7046.....	www.nyackschools.org
Pearl River.....	(845) 620-3939.....	www.pearlriver.org
Rockland BOCES.....	(845) 627-4790.....	www.rocklandboces.org
South Orangetown.....	(845) 680-1025.....	www.socsd.org
Suffern Central.....	(845) 357-7783.....	www.sufferncentral.org

***NOTE: Inclusion in this guide does not constitute an endorsement as to the quality of the services listed. Please note that there may be a charge and/or eligibility requirements for some services.**

■ TABLE OF CONTENTS

Advocacy/Legal Assistance	2
Assistive Technology	3
Care Management	4
Education, Training, & Employment	5
Financial Assistance/Medical Insurance	6
Guardianship/Supported Decision-Making	7
Information/Referral	7
Medical, Mental Health, & Counseling	8-9
Recreation & Leisure	10
Residential & Respite	11
Self-Help/Support Groups	12-13
Transportation	14
List of Agencies Appearing in This Guide	15-21

ROCKLAND COUNTY ACCESS & FUNCTIONAL NEEDS REGISTRY:

Registry for people with disabilities or in need of assistance in the event of an emergency:

- www.rocklandregisters.com
 - Rockland County Department of Fire and Emergency Services
(www.rocklandgov.com or 845-364-8800)
 - BRIDGES (www.bridgesrc.org or 845-624-1366)
 - Hudson Valley 211 Call Center (211)
-

■ ADVOCACY/LEGAL ASSISTANCE

Individuals with disabilities can obtain assistance to clarify and secure their rights through both advocacy groups and legal organizations. If an individual needs assistance with their goals or plans, they can reach out to one of these agencies to answer questions or provide advice.

Advocacy Assistance	ACCES-VR (Adult Career and Continuing Education Services-Vocational Rehabilitation).....	(845) 426-5410
	American Heart Association	(800) 242-8721
	BRIDGES.....	(845) 624-1366
	Capabilities Partnership	(845) 627-0627
	Center for Safety and Change.....	(845) 634-3391
	Disability Rights New York.....	(800) 993-8982
	Haitian-American Cultural and Social Organization, Inc.....	(845) 352-5897
	JCK Foundation.....	(914) 400-8179
	Lighthouse International.....	(800) 829-0500
	Mental Health Association of Rockland County	(845) 267-2172
	NAMI-ROCKLAND	(845) 359-8787
	NY Association Psychiatric Rehabilitation Services.....	(518) 436-0008
	NY Connects	(845) 364-3444
	NYS Commission for the Blind (NYSCB).....	(914) 993-5370
	Onward Recovery.....	(845) 565-1162
	Partnership for Safe & Healthy Youth.....	(845) 405-4180
	Planned Parenthood of Hudson/Peconic.....	(845) 426-7577
	Rockland Council on Alcoholism and Other Drug Dependencies, Inc.....	(845) 215-9788
	Rockland County Department of Social Services (DSS)-Adult Services	(845) 364-3568
	Rockland County Office for People with Disabilities.....	(845) 364-3980
	Rockland Jewish Family Services.....	(845) 354-2121
	SANYS	(845) 707-9923
	The Arc Rockland	(845) 267-2500
	TOUCH.....	(845) 268-8023
	Volunteer Counseling Services, Inc. (VCS).....	(845) 634-5729
	Westchester Institute for Human Development-Community Support Network.....	(914) 493-8150
	Westchester Independent Living Center	(914) 682-3926

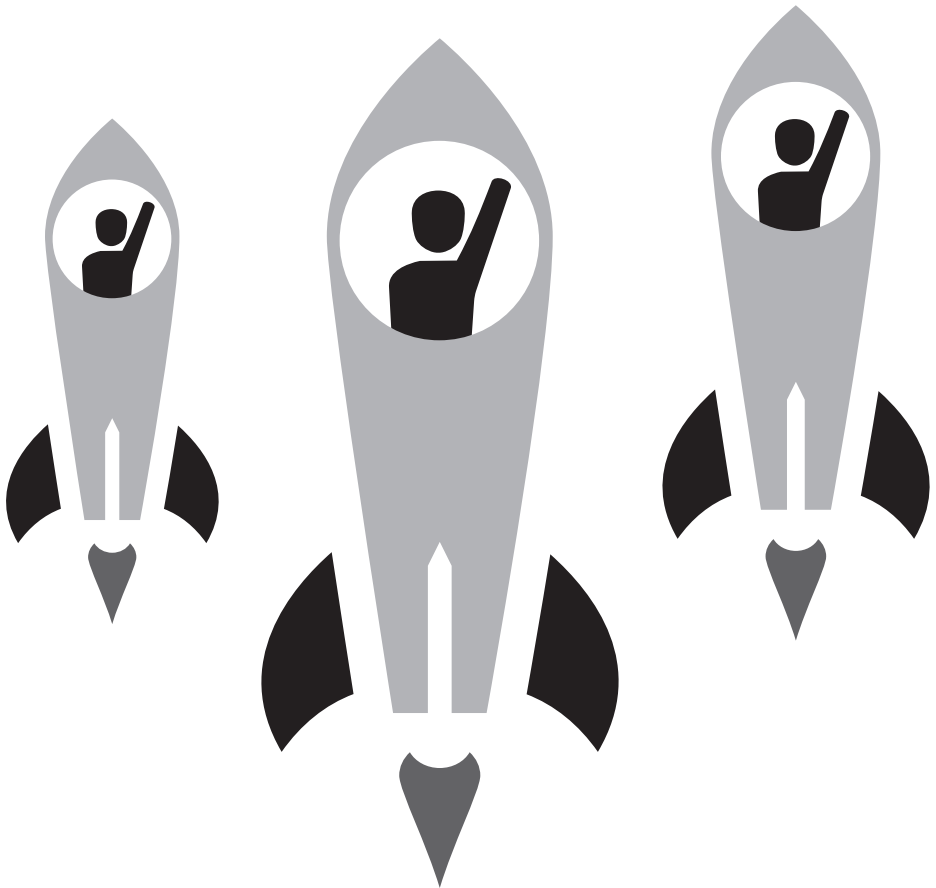
Legal Assistance	Center for Safety and Change.....	(845) 634-3391
	Legal Aid Society of Rockland County, Inc.....	(845) 634-3627
	Legal Services of the Hudson Valley	(845) 476-3821, x180
	Rockland County Department of Social Services-Child Protective Services.....	(845) 364-3512
	Rockland County Human Rights Commission	(845) 364-3886
	Rockland County Probation Department - PINS (Persons in Need of Supervision)	(845) 638-5544
	Rockland County Public Defender's Office.....	(845) 638-5660

ALL MEN, REGARDLESS OF DISABILITY, MUST REGISTER WITH SELECTIVE SERVICE AT AGE 18. YOU CAN REGISTER ONLINE AT WWW.SSS.GOV OR FORMS ARE AVAILABLE AT LOCAL POST OFFICES.

■ ASSISTIVE TECHNOLOGY

Assistive Technology is the use of a device that is used to increase, maintain, or improve the functional capabilities of individuals with disabilities. Evaluations for appropriate assistive technology equipment may be obtained through the following agencies:

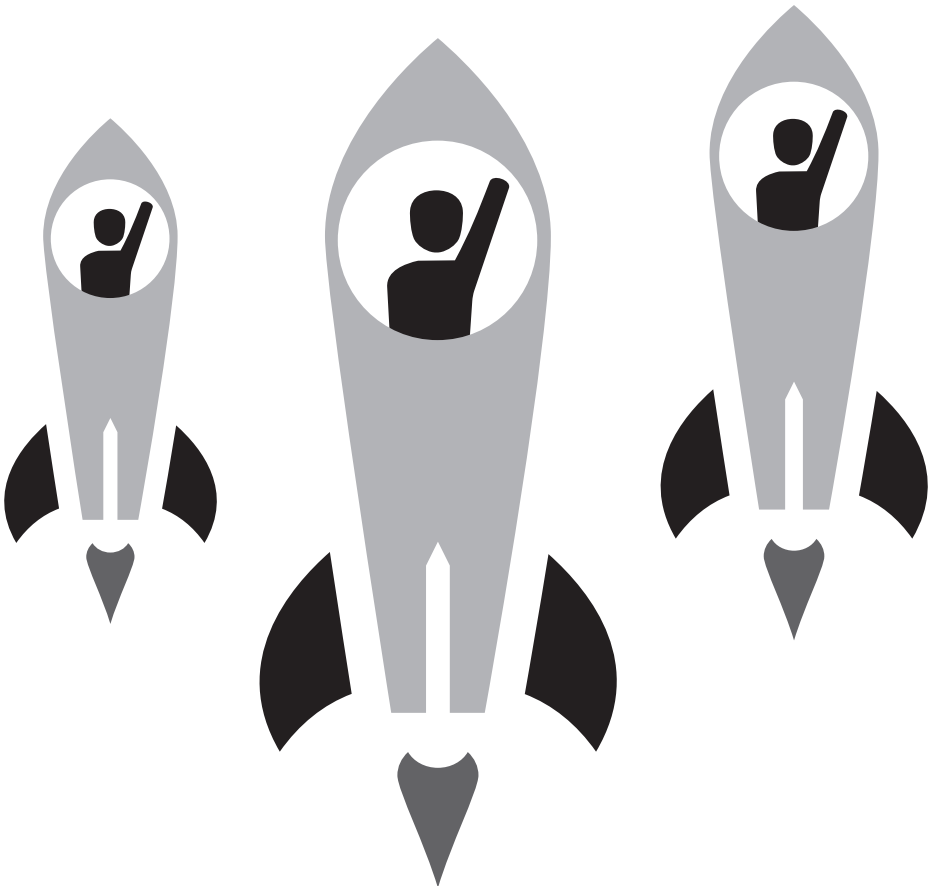
ACCES-VR (Adult Career and Continuing Education Services-Vocational Rehabilitation)	(845) 426-5410
Hamaspik of Rockland County.....	(845) 356-8400
Helen Hayes Hospital-Center for Rehabilitation Technology.....	(888) 70-REHAB
Jawonio, Inc.....	(845) 708-2000
Lighthouse International.....	(800) 829-0500
NYS Commission for the Blind (NYSCB).....	(914) 993-5370
NYS Office for People with Developmental Disabilities (OPWDD/Hudson Valley).....	(845) 947-6390
Rockland BOCES	(845) 627-4790
Westchester Institute for Human Development.....	(914) 493-8150



CARE MANAGEMENT

Care Management is the coordination of services and supports for individuals through Medicaid/Medicare. This can be provided through agencies, Health Homes, and Care Coordination Organizations. These organizations can be tailored to meet the needs of individuals with disabilities.

Care Coordination Enrollment Contact Information (Lower Hudson Valley):	Advanced Care Alliance	(833) 692-2269
	Care Design NY	(518) 816-3724
	Life Plan CCO NY, LLC.....	(315) 565-2612
	Tri-County Care.....	(844) 504-8400
Health Homes and Agencies:	Catholic Charities Community Services.....	(845) 942-5791
	Children's Health Home of Upstate NY.....	(855) 209-1142
	Partners Health Plan.....	(855) 747-5483
	Rockland County Department of Health.....	(845) 364-2512
	Rockland Jewish Family Service.....	(845) 354-2121
TOUCH.....	(845) 268-8023	



EDUCATION, TRAINING, & EMPLOYMENT

As students with disabilities move into the transitional phase of their high school years, they may be referred to ACCES-VR or NYSCB for further vocational services. These services include, but are not limited to, vocational assessment, career counseling, job training and placement, and further education. Additional information about transition planning and adult vocational services is available from the school districts, the Committee on Special Education, or the adult services providers.

Funding agencies for some services are:

ACCES-VR (Adult Career and Continuing Education Services-Vocational Rehabilitation)	(845) 426-5410
NYS Commission for the Blind (NYSCB)	(914) 993-5370
NYS Office for People with Developmental Disabilities (OPWDD/Hudson Valley)	(845) 947-6390

Colleges

In addition to degree programs, local colleges offer a variety of certificate and other non-degree programs. These schools may have staff specifically assigned to help students with disabilities. For more information, contact either the Office of Accessibility/Disability Services or the Office of Admissions at the school. Think College has a list of Inclusive Higher Education experiences on their website.

Dominican College.....	(845) 359-7800
Rockland Community College.....	(845) 574-4000
St. Thomas Aquinas-Pathways Program.....	(845) 398-4100
Successful Learning Center (*non-credit bearing college experience classes for people with disabilities).....	(845) 662-1322
SUNY Empire State College	(845) 517-1294
Think College.....	www.thinkcollege.net
Westchester Community College	(917) 606-6600

Community Agencies

may provide Community Habilitation, Day Habilitation, Care Coordination, Pre-Vocational Training, Supported Employment, Supported Education.

Abbott House	(914) 591-7300	Mental Health Assoc. of Rockland County.....	(845) 267-2172
Another Step.....	(845) 268-8200	NAMI-Rockland.....	(845) 359-8787
Association for the Visually Impaired.....	(845) 574-4950	St. Dominic's Family Services.....	(845) 359-3400
BRIDGES.....	(845) 624-1366	SHARE 24/7	(845) 354-3233
Camp Venture	(845) 624-3860	Summit School/ Children's Residence	(845) 358-7772
Capabilities Partnership, Inc.....	(845) 627-0627	The Arc Rockland	(845) 267-2500
Center for Human Development & Family Services.....	(845) 675-7979	Westchester Institute for Human Development-Community Support Network.....	(914) 493-8150
Hamaspik of Rockland County	(845) 356-8400	YAI.....	(845) 358-5700
Jawonio, Inc.....	(845) 708-2000	Yedei Chesed.....	(845) 425-0887
Lighthouse International... (800) 829-0500			

Public Agencies

ACCES-VR (Adult Career and Continuing Education Services-Vocational Rehabilitation).....	(845) 426-5410
BRIDGES.....	(845) 624-1366
NYS Commission for the Blind (NYSCB).....	(914) 993-5370
NYS Department of Labor/Job Service Division.....	(845) 356-5100, x125
NYS Office for People with Developmental Disabilities (OPWDD/Hudson Valley)	(845) 947-6390
Rockland BOCES	(845) 627-4700
Rockland Community Development Council, Inc.....	(845) 352-1400
Rockland County Career Center, Adult & Youth Services.....	(845) 348-3500
Rockland County Department of Mental Health.....	(845) 364-2150
Rockland County Department of Social Services Employment Unit.....	(845) 364-3143

FINANCIAL ASSISTANCE/MEDICAL INSURANCE

Various types of benefits and financial assistance are available from state and local agencies.

Medical Insurance	Medicaid (for people with disabilities or people aged 65 and over).....	(845) 364-3040
	NYS of Health.....	(855) 355-3394

NYS Department of Labor	Unemployment Benefits	(888) 209-8124
--------------------------------	-----------------------------	----------------

Private/Non-Profit Agencies	American Red Cross.....	(845) 358-0833
These agencies will, on occasion, provide temporary help for those in need:	Catholic Charities Community Services	(845) 942-5791
	Haitian-American Cultural and Social Organization	(845) 352-5897
	People to People	(845) 623-4900
	Rockland Community Development Council.....	(845) 352-1400, x3814
	Salvation Army.....	(845) 352-9577
	United Way of Rockland.....	(845) 358-8929

Rockland County Department of Health WIC (Woman, Infants and Children)	WIC (Women, Infants and Children)	(845) 364-2577
A supplemental food program for pregnant and nursing mothers, infants and children under five years of age.		

Rockland County Department of Social Services	Home Energy Assistance Program (HEAP).....	(845) 364-3480
	Medicaid	(845) 364-3040
	SNAP-Supplemental Nutrition Assistance Program (Formerly Food Stamps).....	(845) 364-3100

Social Security Administration (SSA)	Social Security Disability Benefits (SSD).....	(800) 772-1213
administers two types of disability benefit programs	Supplemental Security Income (SSI)	(800) 772-1213
	Local SSA Office	(866) 755-4334

Benefits Advisement:	BRIDGES.....	(845) 624-1366
	Legal Services of the Hudson Valley	(914) 949-1305, x162

GUARDIANSHIP/SUPPORTED DECISION-MAKING

Guardianship is the outcome of a legal process which designates a parent, another individual, or organization to act on behalf of an individual who may be unable to manage his/her affairs without assistance, beginning at age 18. There are different types of guardianship and supported decision-making that vary based on the level of authority for the responsible party.

To find out more about guardianship/supported decision-making contact an attorney or the following agencies:	BRIDGES.....	(845) 624-1366
	Legal Aid Society of Rockland, Inc.	(845) 634-3627
	Legal Services of the Hudson Valley	(845) 476-3831
	The Arc Rockland	(845) 267-2500
	Volunteer Counseling Services, Inc. (VCS)	(845) 634-5729

HUDSON VALLEY 211: UNITED WAY'S 2-1-1 HELPLINE IS A FREE, CONFIDENTIAL, MULTILINGUAL SERVICE TO ASSIST THE PUBLIC IN FINDING THE ANSWERS TO A VARIETY OF HEALTH AND HUMAN SERVICES RELATED QUESTIONS. IT IS OPEN 365 DAYS A YEAR. DIAL 211.

INFORMATION/REFERRAL

There are many agencies that provide information, answer questions, and direct an individual with a disability to the appropriate agency for service.

Abbott House	(914) 591-7300	Partnership for Safe & Healthy Youth.....	(845) 405-4180
ACCES-VR (Adult Career and Continuing Education Services-Vocational Rehabilitation)	(845) 426-5410	Planned Parenthood of Hudson/Peconic.....	(845) 426-7577
Alanon.....	(845) 727-2050	Regional Partnership Center.....	(914) 248-2289
American Cancer Society.....	(800) 227-2345	Rockland Council on Alcoholism and Other Drug Dependencies.....	(845) 215-9788
American Heart Association.....	(845) 369-1320	Rockland County Career Center, Adult & Youth Services.....	(845) 348-3500
American Red Cross.....	(203) 869-8444	Rockland County Department of Health.....	(845) 364-2512
Association for the Visually Impaired.....	(845) 574-4950	Rockland County Department of Mental Health... (845) 364-2150	
BRIDGES.....	(845) 624-1366	Rockland County D.S.S. Adult Protective Services (Referrals)	(845) 364-2020, (845) 364-3571
Camp Venture.....	(845) 624-3860	Rockland County Office for People with Disabilities.....	(845) 364-3980
Capabilities Partnership	(845) 627-0627	Russell E. Blaisdell Center-Addiction Treatment Center.....	(845) 359-8500
Catholic Charities Community Services.....	(845) 942-5791	Self-Help Clearinghouse of the Mental Health Association.....	(845) 267-2172
Center for Safety and Change.....	(845) 634-3391	Social Security (Rockland Office)	(866) 755-4334
Crystal Run Village, Inc.....	(845) 695-2551	The Arc Rockland	(845) 267-2500
Haitian-American Cultural and Social Organization.....	(845) 352-5897	TOUCH.....	(845) 268-8023
Hamaspek of Rockland County.....	(845) 356-8400	United Way of Rockland	(845) 358-8929
Hudson Valley Region 211	211	Volunteer Counseling Service, Inc. (VCS)	(845) 634-5729
Jawonio, Inc.....	(845) 708-2000	Westchester Independent Living Center	(914) 682-3926
Lighthouse International.....	(800) 829-0500	Westchester Institute for Human Development-Community Support Network.....	(914) 493-8150
Lower Hudson Regional Partnership Center.....	(914) 248-2289	Yachad/National Jewish Council for Disabilities.....	(212) 613-8229
Mental Health Association of Rockland County	(845) 267-2172	YAI.....	(845) 358-5700
NAMI-Rockland.....	(845) 359-8787	Yedei Chesed	(845) 425-0887
NY Connects.....	(845) 364-3444		
NYS Commission for the Blind (NYSCB)	(914) 993-5370		
NYS Office for People with Developmental Disabilities (OPWDD/Hudson Valley).....	(845) 947-6390		

MEDICAL, MENTAL HEALTH, & COUNSELING

Individuals with medical and mental health concerns may seek assistance from hospitals, out-patient clinics, and agencies addressing specific needs. Counseling on an individual or group basis can be provided by a professionally trained person (social worker, counselor, or psychologist) or by someone sharing a common concern (self-help or peer counseling).

IN AN EMERGENCY, CONTACT 911.

Clinics	Arc Health Resources (The Arc Rockland).....	(845) 267-0110
	Community Medical and Dental.....	(845) 352-6800
	Cornerstone Family Health Center at Jawonio.....	(845) 999-3060
	Hamaspik Theragen/NYSHA.....	(845) 655-0600
	Hudson River Health Care (Haverstraw).....	(845) 429-4499
	(Spring Valley).....	(845) 573-9860
	Jawonio.....	(845) 708-2000
	Refuah Health Center.....	(845) 354-9300
	Rockland County Public Health Clinics.....	(845) 364-2512
	Westchester Institute for Human Development.....	(914) 493-8150

Crisis Services	Behavioral Health Response Team (Emergency Mental Health Mobile Crisis Intervention).....	(845) 517-0400, (845) 255-2478
	NY Start (OPWDD Crisis Response and Prevention Program).....	(844) 782-7880
	The Sanctuary (temporary housing for teens).....	(888) 997-1583

Family Assistance	American Red Cross.....	(203) 869-8444
	BRIDGES.....	(845) 624-1366
	Capabilities Partnership.....	(845) 627-0627
	Catholic Charities Community Services.....	(845) 942-5791
	Center for Safety and Change.....	(845) 634-3391
	Haitian-American Cultural and Social Organization.....	(845) 352-5897
	Hamaspik Theragen/NYSHA.....	(845) 655-0600
	Mental Health Association of Rockland.....	(845) 267-2172
	NAMI-Rockland.....	(845) 359-8787
	Partnership for Safe & Healthy Youth.....	(845) 405-4180
	Planned Parenthood of Hudson/Peconic.....	(845) 426-7577
	Rockland County Department of Health WIC (Women, Infants & Children).....	(845) 364-2577
	Rockland Jewish Family Services.....	(845) 354-2121
	TOUCH.....	(845) 268-8023
	Volunteer Counseling Services, Inc.....	(845) 634-5729
	Yedei Chesed.....	(845) 425-0887

Gender and Sexuality	CANDLE Youth Pride.....	(845) 634-6677
The following organizations and agencies provide resources for individuals on the gender and sexuality spectrums and their families. Services offered include advocacy, counseling, support groups, recreation, housing, crisis intervention, medical counseling, information, and education.	Center Lane.....	(914) 423-0610
	GLSEN Hudson Valley.....	(914) 962-7888
	Outcasting (NPR for LGBTQIA+ youth).....	(914) 674-0900
	Rockland County Pride Center.....	(845) 353-6300
	Rockland PFLAG.....	(845) 202-1620
	The LOFT.....	(914) 948-2932
	Trevor Support Center.....	(866) 488-7386

HIV Screening	Hudson Valley Community Services (HVCS).....	(845) 356-0570
	Planned Parenthood of Hudson/Peconic.....	(845) 426-7577
	Rockland County Department of Health/Infectious Disease.....	(845) 364-2570

MEDICAL, MENTAL HEALTH, & COUNSELING (continued)

Hospitals	CLUE - Rockland Hospital Guild	(845) 680-6226
	Four Winds Hospital.....	(914) 763-8151
	Good Samaritan Hospital.....	(845) 368-5000
	Helen Hayes Hospital.....	(888) 70-REHAB
	Montefiore Nyack Hospital	(845) 348-2000
	Rockland Children's Psychiatric Center.....	(845) 680-4080
	Rockland Psychiatric Center	(845) 359-1000

Information and Referral	BRIDGES.....	(845) 624-1366
	Capabilities Partnership	(845) 627-0627
	Hudson Valley Region 211.....	211
	Mental Health Association of Rockland	(845) 267-2172
	Partnership for Safe & Healthy Youth.....	(845) 405-4180
	Rockland County Department of Mental Health.....	(845) 364-2150

Mental Health and Substance Abuse Services	Alanon.....	(845) 727-2050
	BRIDGES.....	(845) 624-1366
	CANDLE (Community Awareness Network for a Drug-Free Life & Environment).....	(845) 634-6677
	Hamaspik of Rockland County.....	(845) 356-8400
	Hudson Valley Community Services (HVCS)	(845) 356-0570
	Jawonio, Inc.....	(845) 708-2000
	JCK Foundation.....	(914) 400-8179
	Lexington Medical Services.....	(212) 752-4345
	Mental Health Association of Rockland County-Recovery Services	(845) 267-2172
	Mental Health Association of Westchester	(914) 345-0700, x7350
	NAMI-Rockland.....	(845) 359-8787
	Nathan Kline Institute for Psychiatric Research	(845) 398-2184
	Nyack Hospital.....	(845) 348-2073
	Rockland Children's Psychiatric Center.....	(845) 680-4080
	Rockland Council of Alcoholism and Other Drug Dependence (RCADD)	(845) 215-9788
	Rockland County Department of Health.....	(845) 364-2516
	Rockland County Department of Mental Health.....	(845) 364-2150
	Rockland Psychiatric Center	(845) 359-1000
	Russell E. Blaisdell Addiction Treatment Center	(845) 359-8500
	Samaritan Daytop Village	(845) 353-2730
	Suicide Prevention Coalition of Rockland.....	(845) 364-2399

Vocational Rehabilitation Services	ACCES-VR (Adult Career and Continuing Education Services-Vocational Rehabilitation)	(845) 426-5410
	Another Step.....	(845) 268-8200
	Association for the Visually Impaired.....	(845) 574-4950
	BRIDGES.....	(845) 624-1366
	Camp Venture.....	(845) 624-3860
	Capabilities Partnership, Inc.	(845) 627-0627
	Hamaspik of Rockland County.....	(845) 356-8400
	Jawonio, Inc.....	(845) 708-2000
	Lighthouse International.....	(800) 829-0500
	Mental Health Association of Rockland	(845) 267-2172
	NYS Commission for the Blind.....	(914) 993-5370
	Rockland County Career Center, Adult & Youth Services.....	(845) 348-3500
	Rockland County Department of Mental Health.....	(845) 364-2150
	Rockland County Department of Social Services-Employment Unit	(845) 364-3143
	The Arc Rockland	(845) 267-2500

24 HOUR SUICIDE CRISIS HOTLINE (800) 273-8255 OR TEXT GOT5 TO 741741

RECREATION & LEISURE

Recreational activities provide opportunities for social development and a more active lifestyle. Some organizations are utilized exclusively by people with disabilities, others by the general public.

General Public Agencies	Big Brothers/Big Sisters of Rockland County	(845) 634-2199
	Girl Scouts Heart of the Hudson	(845) 638-0438
	Hudson Valley Council of the Boy Scouts of America	(845) 564-4210
	JCC- Rockland	(845) 362-4400
	Palisades Interstate Park Comm.-Rockland Lake State Park.....	(845) 268-3020
	Partnership for Safe & Healthy Youth	(845) 405-4180
	Rockland Conservatory of Music	(845) 356-1522
	Rockland YMCA	(845) 358-0245
	Town of Clarkstown Parks & Recreation	(845) 639-6200
	Town of Haverstraw Parks & Recreation.....	(845) 429-2200
	Town of Orangetown Parks & Recreation	(845) 359-6503
	Town of Ramapo Parks & Recreation.....	(845) 357-6100
	Town of Stony Point.....	(845) 947-5261
	Village of Spring Valley Parks & Recreation	(845) 352-2005

Organizations for People with Disabilities	BRIDGES.....	(845) 624-1366
	Buddy Ball.....	(845) 398-1900
	Camp Venture Inc.	(845) 624-3860
	Capabilities Partnership, Inc.	(845) 627-0627
	Challenger Little League	(845) 499-0643
	COPS Barn.....	(845) 623-2677
	Hamaspik of Rockland County.....	(845) 356-8400
	Infinity Equine Therapy	(845) 620-3720
	Jawonio, Inc.....	(845) 708-2000
	MarbleJam Kids	(201) 497-6512
	Mental Health Association of Rockland	(845) 267-2172
	Music For Life	(845) 642-0859
	NY Special Olympics.....	(845) 765-2497
	NYS Brain Injury Association at Helen Hayes Hospital	(888) 70-REHAB
	NYS Commission for the Blind.....	(914) 993-5370
	NYS Office for People with Developmental Disabilities (OPWDD/Hudson Valley)	(845) 947-6390
	Special Olympics	(518) 388-0790
	The Arc Rockland	(845) 267-2500
	The Friendship Circle.....	(845) 368-1889
	TOUCH	(845) 268-8023
	VISIONS Center on Blindness	(845) 354-3003
	Winslow Therapeutic Riding Center	(845) 986-6686
	YAI.....	(845) 358-5700

RESIDENTIAL & RESPITE

Residential

There are various residential options available in the community for individuals with disabilities. The selection of an option is based on the extent of support the individual needs in the community. Help with the selection process may be found at these agencies. There are eligibility requirements.

Abbott House	(914) 591-7300
Another Step.....	(845) 268-8200
Camp Venture Inc.	(845) 624-3860
Center for Safety and Change (formerly Rockland Family Shelter)	
Emergency Shelter	(845) 634-3391
CLUE - Rockland Hospital Guild	(845) 680-6226
Crystal Run Village, Inc.....	(845) 695-2551
Hamaspik of Rockland County.....	(845) 356-8400
Jawonio, Inc.....	(845) 708-2000
Loeb House.....	(845) 735-0515
Mental Health Association of Rockland County	(845) 267-2172
NYS Office for People with Developmental Disabilities (OPWDD/Hudson Valley).....	(845) 947-6390
Open Arms, Inc. (Men's residence)	(845) 429-9514
Open Arms, Inc. (Women's residence).....	(845) 271-3787
Rockland County Dept. of Social Services (DSS)	
Emergency Family Shelter	(845) 364-2907
St. Dominic's Family Services.....	(845) 359-3400
Summit School/Summit Children's Residence Center.....	(845) 358-7772
The Arc Rockland	(845) 267-2500
The Sanctuary (temporary shelter for teens).....	(888) 997-1583
YAI.....	(845) 358-5700
Yedei Chesed	(845) 425-0887

Respite

Respite services provide support to families who need occasional assistance with caring for an individual with disabilities. Such services may be provided either at home or at an outside facility for a day, overnight, or a weekend. There are eligibility requirements.

Another Step.....	(845) 268-8200
Camp Venture Inc.	(845) 624-3860
Childcare Resources of Rockland.....	(845) 425-0009
Crystal Run Village, Inc.....	(845) 695-6009
Haitian-American Cultural and Social Organization, Inc.	(845) 352-5897
Hamaspik of Rockland County.....	(845) 356-8400
Jawonio, Inc.....	(845) 708-2000
Loeb House.....	(845) 735-0515
Mental Health Association of Rockland County	(845) 267-2172
NY Foundling	(212) 633-9300
NYS Office for People with Developmental Disabilities (OPWDD/Hudson Valley).....	(845) 947-6390
St. Dominic's Family Services.....	(845) 359-3400
SHARE 24/7.....	(845) 354-3233
The Arc Rockland	(845) 267-2500
YAI.....	(845) 358-5700
Yedei Chesed	(845) 425-0887

SELF-HELP/SUPPORT GROUPS

Self-Help Groups provide information, emotional support, and an opportunity for creative problem solving for individuals with common concerns. Groups may be started and run by individuals or organizations. Most groups are free and some charge a fee. National and local Self-Help Clearinghouses keep an up-to-date list of self-help groups. In Rockland, the Clearinghouse is run by the Mental Health Association (MHA). MHA also has information on how to start a group, as well as training for potential group leaders. 211 also has information on many types of Support Groups not listed below.

211	www.hudson211.org or call 211
MHA (Rockland Self-Help Clearinghouse)	(845) 267-2172, x422
National Clearinghouse	(212) 817-1822

Further information is available about:

A.I.D.S. and HIV	Hudson Valley Community Services (HVCS)	(845) 356-0570
Alcoholism/Drug Addiction	Alanon	(845) 727-2050
	Alateen	(845) 727-2050
	Alcoholics Anonymous	(845) 352-1112
	Narcotics Anonymous	(845) 358-1297
Amputee Support	Helen Hayes Hospital	(845) 786-4000
Anger Management	Westchester Independent Living Center	(914) 682-3926
Aspergers/High Functioning Autism	Rockland Jewish Family Service	(845) 354-2121
Asperger's Syndrome (Family Support)	The Arc Westchester	(914) 528-3871
Attention Deficit Disorder	CHADD	(800) 233-4050
Autism Youth Support Group	BRIDGES	(845) 624-1366
Bereavement Support	The Compassionate Friends	(845) 634-2187
	Rockland Jewish Family Service	(845) 354-2121
	United Hospice of Rockland	(845) 634-4974
Bereavement Support (Loss of a Child)	The Marian Shrine	(845) 492-6709
Brain Injury	Helen Hayes Hospital	(845) 786-4044
Cancer	American Cancer Society	(800) 227-2345
Cardiac	Helen Hayes Hospital-Heart Club/American Heart Association	(845) 786-4000
Caregivers Group	Helen Hayes Hospital	(845) 786-4000
Cerebral Palsy	ADAPT Community Network	(212) 683-6700
Depression/Bi-Polar Support	Depression and Bi-Polar Support Alliance	(845) 422-2084
Developmental/Intellectual Disabilities	NYS Office for People with Developmental Disabilities (OPWDD/Hudson Valley)	(845) 947-6390
Diabetes	American Diabetes Association	(212) 725-4925, x3435
	Good Samaritan Hospital	(845) 368-5935
	Juvenile Diabetes Association	(914) 686-7700
Domestic Violence	Center for Safety and Change	(845) 634-3391
Drug Addiction	Good Samaritan Hospital	(845) 368-5242
Drug & Alcohol Addiction	Samaritan Daytop Village	(845) 353-2730
Eating Disorders	Rockland Jewish Family Service	(845) 354-2121

■ SELF-HELP/SUPPORT GROUPS (continued)

Epilepsy/Traumatic Brain Injury	Capabilities Partnership	(845) 627-0627
Gender and Sexuality	CANDLE Youth Pride	(845) 634-6677
	Rockland Pride Center	(845) 353-6300
Gender and Sexuality (families).....	Rockland PFLAG.....	(845) 202-1620
Heart.....	American Heart Association	(800) 242-8721
Learning Disabilities	YAI.....	(845) 358-5700
Lupus	Lupus Foundation.....	(973) 379-3226
Lyme Disease	Lyme Disease Helpline.....	(800) 366-6611
Mental Health	Mental Health Association of Rockland	(845) 267-2172
Mental Health (Individuals and Families).....	NAMI-Rockland.....	(845) 359-8787
	Partnership for Safe & Healthy Youth.....	(845) 405-4181
Mental Health/Recovery.....	Westchester Independent Living Center	(914) 682-3926
Multiple Sclerosis	National Multiple Sclerosis Society	(800) 344-4867
Muscular Dystrophy	Muscular Dystrophy Association.....	(800) 572-1717
Organ Transplant.....	Good Samaritan Hospital	(845) 353-3062
Osteoporosis.....	Helen Hayes Hospital	(845) 786-4772
Peer Counseling Groups	BRIDGES.....	(845) 624-1366
Pulmonary.....	Helen Hayes Hospital.....	(845) 786-4200
Rare Diseases	Office of Rare Diseases	(888) 205-2311
Rett Syndrome.....	International Rett Syndrome Foundation	(513) 874-3020
Self-Advocacy.....	Self-Advocacy Association in NYS (SANYS)	
	Westchester Institute for Human Development (WIHD).....	(914) 496-8150
Sexual Assault, Teen Dating Violence, Domestic Violence	Center for Safety and Change.....	(845) 634-3391
Siblings (5-12 year olds that have a sibling with a disability).....	The Arc Rockland	(845) 267-2500
Social Skills (older teens/adults).....	Westchester Independent Living Center	(914) 682-3926
Spinal Cord Injury.....	Helen Hayes Hospital.....	(845) 786-4950
Stroke Club.....	Helen Hayes Hospital.....	(845) 786-4200
Student Advocacy	Volunteer Counseling Service Inc. (VCS).....	(845) 634-5729
Suicide Prevention	Suicide Prevention Coalition of Rockland.....	(845) 364-2399
Survivors of Suicide (those who have lost someone to suicide).....	Mental Health Association of Rockland	(845) 267-2172
Visual Impairments	Association for the Visually Impaired	(845) 574-4950
	Lighthouse International	(800) 829-0500
	NYS Commission for the Blind (NYSCB).....	(914) 993-5370
	VISIONS Center on Blindness	(845) 354-3003

HUDSON VALLEY 211: UNITED WAY'S 2-1-1 HELPLINE IS A FREE, CONFIDENTIAL, MULTILINGUAL SERVICE TO ASSIST THE PUBLIC IN FINDING THE ANSWERS TO A VARIETY OF HEALTH AND HUMAN SERVICES RELATED QUESTIONS. IT IS OPEN 365 DAYS A YEAR. DIAL 211.

TRANSPORTATION

Rockland County residents with disabilities have access to various forms of public transportation. In addition, there is a para-transit bus service, T.R.I.P.S., which provides round trip transportation to doctors' offices, jobs, shopping, and recreation for individuals with disabilities. Individuals must meet eligibility requirements and there is a fee for this service.

Amtrak	(800) 872-7245
Clarkstown Mini Trans	(845) 623-0667
Haverstraw Ferry	(201) 902-8700
Hudson Link.....	(844) 822-8920
Metro North.....	(718) 330-3000
Rockland Coaches Coach USA	(845) 356-0877
Rockland County Department of Public Transportation.....	(845) 364-2064
Rockland County T.R.I.P.S. (reservations must be made in advance).....	(845) 364-TRIP
TOR (Transport of Rockland).....	(845) 364-3333

Driver's License Department of Motor Vehicles..... (718) 477-4820

To obtain a driving permit, driver's license, non-driver photo identification card, or information contact:

Driver Training ACCES-VR (Adult Career and Continuing Education Services-Vocational Rehabilitation)..... (845) 426-5410
 Individuals with disabilities who may need specialized driver training can be evaluated at Helen Hayes Hospital. Charges for training may be covered by Medicaid, or by ACCES-VR, for those who qualify.
 Burke Rehabilitation Hospital (914) 597-2187
 Helen Hayes Hospital.....(888) 70-REHAB

Reduced Fare Cards BRIDGES.....(845) 624-1366

Reduced fare cards for some transportation services may be obtained from:
 Rockland County Department of Public Transportation.....(845) 364-3434

Travel Training ACCES-VR (Adult Career and Continuing Education Services-Vocational Rehabilitation)..... (845) 426-5410
 Some individuals with disabilities may need assistance in learning how to travel independently.
 Association for the Visually Impaired..... (845) 574-4950
 BRIDGES.....(845) 624-1366
 NYS Commission for the Blind (NYSCB).....(914) 993-5370

■ LIST OF AGENCIES APPEARING IN THIS GUIDE

Abbott House

100 North Broadway
Irvington, NY 10533
(914) 591-7300
www.abbotthouse.net

ACCES-VR (Adult Career and Continuing Education Services-Vocational Rehabilitation)

15 Perlman Drive, 2nd Floor
Pascack Plaza
Spring Valley, NY 10977
(845) 426-5410
www.acces.nysed.gov/vr

Advance Care Alliance of NY Inc.

500 7th Ave., 8th Floor
New York, NY 10018
(833) 692-2269
www.advancecarealliance.org

Alanon

PO Box 127
Thiells, NY 10984
(845) 727-2050
www.rockland-al-anon.org

Alateen-Alanon

P.O. Box 127
Thiells, NY 10984
(845) 727-2050
www.rockland-al-anon.org

American Cancer Society

38 Richards Avenue
Norwalk, CT 06854
(800) 227-2345
www.cancer.org

American Diabetes Association

333 Seventh Avenue, 17th Floor
New York, NY 10001
(212) 725-4925, x3435
www.diabetes.org

American Heart Association

2 Lion Place
White Plains, NY 10601
(914) 397-8858
www.heart.org/HEARTORG/

American Red Cross

99 Indian Field Road
Greenwich, CT 06830
(203) 869-8444
www.redcross.org

Another Step

706 Executive Blvd., #E
Valley Cottage, NY 10989
(845) 268-8200
www.anotherstep.org

Association for the Visually Impaired

260 Old Nyack Turnpike
Spring Valley, NY 10977
(845) 574-4950
www.avieyes.org

Behavioral Health Response Team (BHRT)

(845) 517-0400

Big Brothers/Big Sisters of Rockland County

65 N. Main Street
New City, NY 10956
(845) 634-2199
www.bbbsofrc.com

BRIDGES (formerly Rockland Independent Living Center)

2290 Palisades Center Drive
2nd Floor
West Nyack, NY 10994
(845) 624-1366
www.bridgesrc.org

Buddy Ball Sports

175 Old Orangeburg Road
Orangeburg, NY 10962
(845) 398-1900
www.buddyballsports.org

Burke Rehabilitation Hospital

785 Mamaroneck Avenue
White Plains, NY 10605
(914) 597-2500
www.burke.org

Camp Venture, Inc.

25 Smith Street, Suite 501
Nanuet, NY 10954
(845) 624-3860
www.venturerockland.org

CANDLE (Community Awareness Network for a Drug-Free Life & Environment)

120 North Main Street, Suite 301
New City, NY 10956
(845) 634-6677
www.candlerockland.org

CANDLE Youth Pride

120 North Main Street, Suite 301
New City, NY 10956
(845) 634-6677
www.candlerockland.org

Capabilities Partnership, Inc./Epilepsy Society of Southern NY

450 West Nyack Road, Suite 9
West Nyack, NY 10994
(845) 627-0627
www.learnaboutepilepsy.com

Care Design NY

86 Main Street, 3rd Floor
Yonkers, NY 10701
(518) 948-9099
www.caredesignny.org

Catholic Charities Community Services of Rockland

78 Hudson Avenue
Haverstraw, NY 10927
(845) 942-5791
www.ccsrockland.org

Center for Human Development and Family Services (CHDFS, Inc.)

1 Blue Hill Plaza, 1st Floor
Pearl River, NY 10965
(845) 203-8555
www.chdfslhv.org

Center for Safety and Change (formerly Rockland Family Shelter)

9 Johnsons Lane
New City, NY 10956
(845) 634-3391
Hotline: (845) 634-3344
www.centerforsafetyandchange.org

Center Lane - WCJS

30 South Broadway, 6th Floor
Yonkers, NY 10701
(914) 423-0610
www.centerlane@wjcs.com

Cerebral Palsy Guide

1073 Willa Springs Drive
Suite 2006
Winter Springs, FL 32708
(855) 337-5531
www.cerebralpalsyguide.com

Challenger Little League

www.littleleague.org/play-little-league/challenger

Childcare Resources of Rockland

235 N. Main Street, Suite 11
Spring Valley, NY 10977
(845) 425-0009
www.childcarerockland.org

Children's Health Home of Upstate New York

(855) 209-1142
www.ChildrensHealthHome.com

CLUE-Rockland Hospital Guild

2 Irving Way
Orangeburg, NY 10962
(845) 680-6226
http://rocklandguild.org/

COPS Barn (Children of Promise Stable)

135 Convent Road
Nanuet, NY 10954
(845) 623-2677
www.copsbarn.org

Cornerstone Family Healthcare at Jawonio

260 North Little Tor Road
New City, NY 10956
(845) 999-3060
www.cornerstonefamilyhealth-care.org

Crystal Run Village, Inc.

420 Schutt Road Extension
Middletown, NY 10940
(845) 692-4444
www.crvl.org

Department of Motor Vehicles (DMV)

50 Samsondale Plaza
West Haverstraw, NY 10993
(718) 477-4820
https://dmv.ny.gov

Disability Rights New York

725 Broadway, Suite 450
Albany, NY 12207
(800) 993-8982
www.drny.org

Dominican College

470 Western Highway
Orangeburg, NY 10962
(845) 359-7800
www.dc.edu

Four Winds Hospital (Westchester)

800 Cross River Road
Katonah, NY 10536
(800) 528-6624
(914) 763-8151
www.fourwindshospital.com

Girl Scouts Heart of the Hudson

87 Maple Avenue
New City, NY 10956
(845) 638-0438
www.girlscoutshh.org

GLSEN Hudson Valley

P.O. Box 604
Yorktown Heights, NY 10598
(914) 962-7888
www.glsen.org/hudsonvalley

Good Samaritan Hospital

255 Lafayette Avenue
Suffern, NY 10901
(845) 368-5000
www.goodsamhosp.org

Haitian-American Cultural & Social Organization, Inc. (HACSO)

24 West Street
Spring Valley, NY 10977
(845) 352-5897
www.hacso.org

Hamaspik of Rockland County

58 Rt. 59, Suite #1
Monsey, NY 10952
(845) 356-8400
www.hamaspikrockland.org

Hamaspik Theragen/NYSHA, Inc.

58 Route 59
Monsey, NY 10952
(845) 655-0600
www.hamaspiktheragen.org

Helen Hayes Hospital

Route 9W
West Haverstraw, NY 10993
(888) 70-REHAB
www.helenhayeshospital.org

Hudson River Health Care

Various locations
throughout the county
(845) 770-9980
www.hrhcare.org

Hudson Valley Community Services (HVCS)

72 Route 59 East
Spring Valley, NY 10977
(845) 356-0570
www.hudsonvalleycs.org

Hudson Valley Council of the Boy Scouts of America (BSA)

6 Jeanne Drive
Newburgh, NY 12550
(845) 564-4210
www.hudsonvalleyscouting.org

Hudson Valley Region 211

Phone: 211
www.hudson211.org

Infinity Equine Therapy

68A Sickletown Road
Orangeburg, NY 10962
(845) 620-3720
www.infinityequine.org

Jawonio, Inc.

260 North Little Tor Rd.
New City, NY 10956
(888) 320-4295
(845) 708-2000
www.jawonio.org

JCC Rockland

450 West Nyack Road
West Nyack, NY 10994
(845) 362-4400
www.jccofrockland.org

JCK Foundation

205 Clinton Avenue
Dobbs Ferry, NY 10522
(914) 400-8179
www.jckfoundation.org

Legal Aid Society of Rockland County, Inc.

2 Congers Road
New City, NY 10956
(845) 634-3627, x180
www.legalaidrockland.org

Legal Services of the Hudson Valley

7A Perlman Drive, 2nd Floor
Spring Valley, NY 10977
(845) 476-3831
www.lshv.org

Life Plan CCO NY, LLC

258 Genesee St., Suite 601
Utica, NY 13502
(315) 565-2612
www.lifeplanccony.com

Lighthouse Guild

250 West 64th Street
New York, NY 10023
(800) 284-4422
www.lighthouseguild.org

Loeb House, Inc.

1 Blue Hill Plaza, #1648
Pearl River, NY 10965
(845) 735-0515
www.loebhouse.org

Lower Hudson Regional Partnership Center

200 BOCES Drive
Yorktown Heights, NY 10598
(914) 248-2289
https://rsetasc.pnwboces.org

MarbleJam Kids

214 State Street, Suite 204
Hackensack, NJ 07601
(201) 497-6512
www.marblejamkids.org

Mental Health Association of Rockland County, Inc.

140 Route 303
Valley Cottage, NY 10989
(845) 267-2172
www.mharockland.org

Montefiore Nyack Hospital

160 North Midland Avenue
Nyack, NY 10960
(845) 348-2000
www.montefiorenyack.org

Music For Life

117 Depew Avenue
Nyack, NY 10960
(845) 642-0859
www.musicforlife.co

NAMI-Rockland

140 Old Orangeburg Road
Bldg. 57, Room C102
Orangeburg, NY 10962
(845) 359-8787
www.namirockland.org

Nathan Kline Institute for Psychiatric Research

140 Old Orangeburg Road
Orangeburg, NY 10962
(845) 398-5500
www.nki.rfmh.org

National Multiple Sclerosis Society

733 Third Avenue, 3rd Floor
New York, NY 10017
(800) 344-4867
www.nationalmssociety.org

National Self-Help Clearinghouse

365 5th Ave, Suite 3300
New York, NY 10016
(800) 367-6274
www.selfhelp.org

NY Connects

50 Sanatorium Road
Pomona, NY 10970
(845) 364-3444
www.nyconnects.ny.gov

NY Special Olympics

1207 Route 9, Suite 1C
Wappingers Falls, NY 12590
(845) 765-2497
www.specialolympics.org

NY START Crisis Prevention & Response (through OPWDD)

44 Holland Avenue
Albany, NY 12229
(844) 782-7880
www.opwdd.ny.gov/ny-start

NYS Brain Injury Association

4 Pine West Plaza, Suite 402
Albany, NY 12205
(518) 459-7911
www.bianys.org

NYS Commission for the Blind (NYSCB)

117 East Stevens Avenue, Suite 300
Valhalla, NY 10595
(914) 993-5370
www.ocfs.ny.gov

NYS Department of Labor

37 Broad Street
Haverstraw, NY 10927
(845) 406-6450
www.labor.ny.gov

NYS Office for People with Developmental Disabilities Hudson Valley Regional Office (OPWDD)

PO Box 470
9 Wilbur Road
Thiells, NY 10984
(845) 947-6390
www.opwdd.ny.gov

Palisades Interstate Park Commission

Administration Bldg.
Bear Mountain, NY 10911
(845) 786-2701
www.palisadesparks.org

Partnership for Safe & Healthy Youth

131 North Midland Avenue
Nyack, NY 10960
(845) 405-4180
www.rocklandboces.org

People to People

121 West Nyack Road
Nanuet, NY 10954
(845) 623-4900
www.peopletopeopleinc.org

PHP Partners Health Plan

655 Third Avenue, 2nd Floor
New York, NY 10017
(855) 747-5483
www.phpcares.org

Planned Parenthood of Hudson/Peconic

Spring Valley Health Center
25 Perlman Drive
Spring Valley, NY 10977
(845) 426-7577
www.plannedparenthood.org

Rockland BOCES Adult Education and Business Services

131 North Midland Avenue
Nyack, NY 10960
(845) 348-3500, x3591
www.rocklandboces.org

Rockland BOCES Career and Technical Education Center

65 Parrott Road
West Nyack, NY 10994
(845) 627-4770
www.rocklandboces.org

Rockland BOCES Student Services

65 Parrott Road
West Nyack, NY 10994
(845) 627-4790
www.rocklandboces.org

Rockland Children's Psychiatric Center

2 First Avenue
Orangeburg, NY 10962
(845) 680-4000
<http://www.omh.state.ny.us/omhweb/facilities/rcpc>

Rockland Community College

145 College Road
Suffern, NY 10901
(845) 574-4000
(845) 574-4541 (Accessibility Services office)
www.sunyrockland.edu

Rockland Community Development Council, Inc.

22 Main Street
Monsey, NY 10952
(845) 352-1400
www.rocklanddc.org

Rockland Conservatory of Music

45 South Main Street
Pearl River, NY 10965
(845) 356-1522
www.rocklandconservatory.org

Rockland Council on Alcoholism and other Drug Dependence, Inc.

25 Smith Street, Suite 101
Nanuet, NY 10954
(845) 215-9788
www.rcadd.org

Rockland County Career Center Adult Services Rockland BOCES

131 North Midland Avenue
Nyack, NY 10960
(845) 348-3500
www.rocklandboces.org

Youth Connections Rockland BOCES

131 North Midland Avenue
Nyack, NY 10960
(845) 348-3500, x3
www.rocklandboces.org/
youth-connections/

Rockland County Department of Health

Sanatorium Road, Bldg. D
Pomona, NY 10970
(845) 364-2512 (Administration)
(845) 364-2520 (Public Health Clinic)
(845) 364-2577 (WIC - Women, Infants, & Children)
www.rocklandgov.com/
departments/health

Rockland County Department of Mental Health

50 Sanatorium Road, Bldg. F
Pomona, NY 10970
(845) 364-2378
www.rocklandgov.com/
departments/mental-health

**Rockland County
Department of Social Services**

Robert Yeager Health Center
Sanatorium Road Bldg. L
Pomona, NY 10970
(845) 364-2000

Adult Protective Services-Bldg. C
(845) 364-3571

Child Protective Services-Bldg. C
(845) 364-3512
(800) 342-3720 (Reporter Hotline)

Employment Unit-Bldg. L
(845) 364-3143
[www.rocklandgov.com/
departments/social-services/](http://www.rocklandgov.com/departments/social-services/)

**Rockland County Department
of Transportation**

50 Sanatorium Road
Pomona, NY 10970
(845) 364-3333 (TOR & TZ Express)
(845) 364-8747 (T.R.I.P.S.)
(845) 364-2108
(Taxi Voucher Program)
(845) 364-3333
(Senior Discount Program)
[www.rocklandgov.com/
departments/public-transportation](http://www.rocklandgov.com/departments/public-transportation)

**Rockland County
Human Rights Commission**

50 Sanatorium Road, Bldg. G
Pomona, NY 10970
(845) 364-3886
[www.rocklandgov.com/
departments/human-rights](http://www.rocklandgov.com/departments/human-rights)

**Rockland County Office for
People with Disabilities**

50 Sanatorium Road
Bldg. A, 6th Floor/Room 629
Pomona, NY 10970
(845) 364-3980
[http://rocklandgov.com/
programs-and-services-for-
people-with-disabilities/](http://rocklandgov.com/programs-and-services-for-people-with-disabilities/)

Rockland County Pride Center

28 S. Franklin St. (entrance on
Jackson Avenue)
Nyack, NY 10960

Mailing Address: PO Box 505,
Nyack, NY 10960
(845) 353-6300
www.rocklandpridecenter.org

**Rockland County Probation
Dept. PINS**

11 New Hempstead Road
New City, NY 10956
(845) 638-5544
[http://rocklandgov.com/
departments/probation/](http://rocklandgov.com/departments/probation/)

**Rockland County Public
Defender**

11 New Hempstead Road
New City, NY 10956
(845) 638-5660
[www.rocklandgov.com/
departments/public-defender](http://www.rocklandgov.com/departments/public-defender)

Rockland Jewish Family Service

450 West Nyack Road, Suite 2
West Nyack, NY 10994
(845) 354-2121, x140
www.rjfs.org/

Rockland PFLAG

P.O. Box 653
Palisades, NY 10964
(845) 202-1620
www.rocklandpflag.org

Rockland Psychiatric Center

140 Old Orangeburg Road
Orangeburg, NY 10962
(845) 359-1000
[www.omh.ny.gov/omhweb/
facilities/rppc](http://www.omh.ny.gov/omhweb/facilities/rppc)

Rockland YMCA

35 South Broadway
Nyack, NY 10960
(845) 358-0245
www.rocklandymca.org

**Russell E. Blaisdell Addiction
Treatment Center**

140 Old Orangeburg Road
Orangeburg, NY 10962
(845) 359-8500
[www.oasas.ny.gov/location/
russell-e-blaisdell-addiction-
treatment-center](http://www.oasas.ny.gov/location/russell-e-blaisdell-addiction-treatment-center)

Salvation Army

179 North Main Street
Spring Valley, NY 10977
(845) 352-9577
www.newyork.salvationarmy.org

Samaritan Daytop Village

620 Route 303
Blauvelt, NY 10913
(800) 232-9867 (hotline)
(845) 353-2730
www.samaritanvillage.org

**Self-Advocacy Association
of NYS (SANYS)**

25 Beaver Street, 4th Floor
New York, NY 10004
(914) 495-4475
www.sanys.org

**Self-Help Clearinghouse of
Mental Health Association**

140 Route 303
Valley Cottage, NY 10989
(845) 267-2172, x22
[www.mharockland.org/
self-help-resources/](http://www.mharockland.org/self-help-resources/)

SHARE 24/7

286 North Main Street
Spring Valley, NY 10977
(845) 354-3233
www.chesed247.org

Social Security Administration

240 West Nyack Road
West Nyack, NY 10994
(866) 755-4334
www.ssa.gov

Special Olympics

1207 Route 9, Suite 1C
Wappingers Falls, NY 12590
(518) 388-0790
www.specialolympicsny.org

St. Dominic's Family Services

500 Western Highway
Blauvelt, NY 10913
(845) 359-3400
www.sdfs.org

**St. Thomas Aquinas College
Pathways Program**

125 Route 340
Sparkill, NY 10976
(845) 398-4230
www.stac.edu/special-programs/pathways-program

Successful Learning Center

2 Lake Street
Monroe, NY 10950
(845) 662-1322
www.access2college.com

**Summit School/Summit
Children's Residence Center**

339 North Broadway
Nyack, NY 10960
(845) 358-7772
www.summitnyack.com

SUNY Empire State College

210 N. Central Avenue
Hartsdale, NY 10530
(800) 847-3000
www.esc.edu

The Arc Rockland

25 Hemlock Drive
Congers, NY 10920
(845) 267-2500
www.arcofrockland.org

The Friendship Circle

350 Haverstraw Road
Montebello, NY 10901
(845) 368-1889
www.rocklandfriendship.com

The LOFT

252 Bryant Avenue
White Plains, NY 10605
(914) 948-2932
www.loftgaycenter.org

The NY Foundling

6 Duryea Lane
Nanuet, NY 10954
(917) 485-7866
www.nyfoundling.org

**The Trevor Project (Crisis
Intervention & Suicide
Prevention for LGBTQ+ Youth)**

(866) 488-7386
www.thetrevorproject.org

Think College

(College search options
for people with developmental
disabilities)
www.thinkcollege.net

**TOUCH-Together Our
Unity Can Heal**

209 Route 9W North
Congers, NY 10920
(845) 268-8023
www.touchny.org

**Town of Clarkstown
Parks and Recreation**

31 Zukor Road
New City, NY 10956
(845) 639-6200
[www.town.clarkstown.ny.us/
town_hall/recreation_parks](http://www.town.clarkstown.ny.us/town_hall/recreation_parks)

**Town of Haverstraw
Parks & Recreation**

1 Rosman Road
Garnerville, NY 10923
(845) 429-2200
[www.townofhaverstraw.org/
parks.html](http://www.townofhaverstraw.org/parks.html)

**Town of Orangetown
Parks & Recreation**

81 Hunt Road
Orangeburg, NY 10962
(845) 359-6503
[www.orangetown.com/
parks-and-recreation-office/](http://www.orangetown.com/parks-and-recreation-office/)

**Town of Ramapo
Parks & Recreation**

3 Palisades Credit Union
Park Drive
Pomona, NY 10970
(845) 357-6100
www.ramapoparks.org

**Town of Stony Point
Parks & Recreation**

5 Clubhouse Lane
Stony Point, NY 10980
(845) 947-5261
[www.townofstonypoint.org/
recreation-department](http://www.townofstonypoint.org/recreation-department)

Tri County Care

829 E. 15th Street
Brooklyn, NY 11230
(844) 504-8400
www.tricountycare.org

**United Way Hudson Valley
Regional 2-1-1** (2-1-1 is a free,
confidential, multilingual health
and human services helpline
that easily links people to the
services they need)

336 Central Park Avenue
White Plains, NY 10606
(800) 899-1479
or call 211
www.hudson211.org

**Village of Spring Valley
Parks & Recreation**

200 North Main Street
Spring Valley, NY 10977
(845) 352-1100
www.villagespringvalley.org

VISIONS - Center on Blindness

111 Summit Park Road
Spring Valley, NY 10977
(845) 354-3003
www.visionsvcb.org

Volunteer Counseling Service, Inc.

77 South Main Street
New City, NY 10956
(845) 634-5729
www.vcs-inc.org

Westchester Community College

75 Grasslands Road
Valhalla, NY 10595
(914) 606-6600
www.sunywcc.edu

Westchester Independent Living Center

10 County Center Drive
White Plains, NY 10607
(914) 682-3926
www.wilc.org

Westchester Institute for Human Development

Cedarwood Hall (20 Plaza West)
Valhalla, NY 10595
(914) 493-8150
www.wihd.org

Westchester Institute for Human Development-Community Support Network

Cedarwood Hall
Valhalla, NY 10595
(914) 493-7665
www.wihdcsn.org

Winslow Therapeutic Riding Center

1433 Route 17A
Warwick, NY 10990
(845) 986-6686
www.winslow.org

Yachad, National Jewish Council for Disabilities

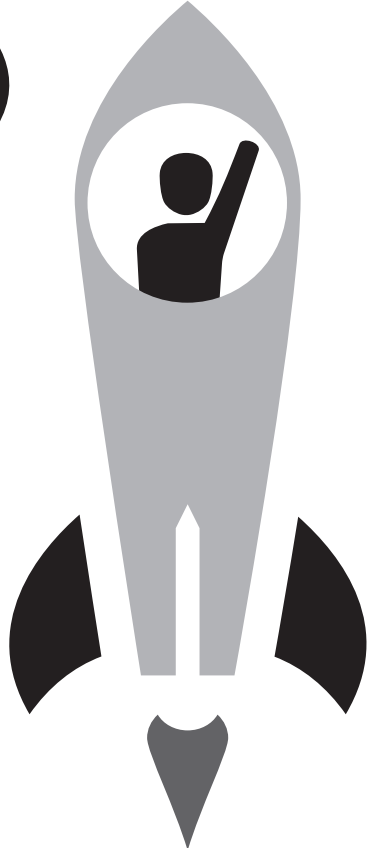
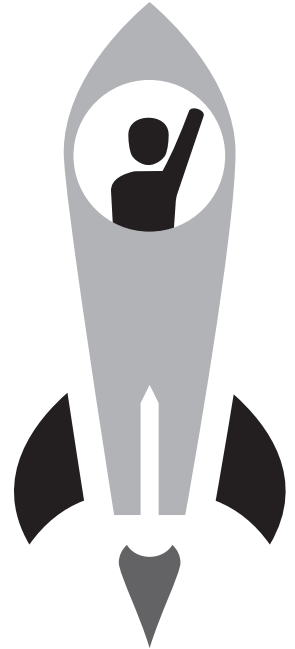
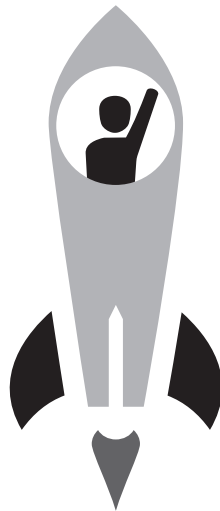
11 Broadway, 13th Floor
New York, NY 10007
(212) 613-8229
www.yachad.org

YAI

345 North Main Street, 2nd Floor
New City, NY 10956
(845) 358-5700
www.yai.org

Yedei Chesed

48 Scotland Hill Road
Chestnut Ridge, NY 10977
(845) 425-0887
www.yedeichesed.org



REACHING for the FUTURE is made possible through
the support of the following organizations and businesses:



Rockland Transition Consortium

The Consortium consists of representatives from Rockland County School Districts, public agencies, non-profit organizations, and colleges who are committed to providing a smooth transition for individuals with disabilities from school to work and/or post-secondary programs, children's services to adult services, and home to the community at large. For information, contact Mary Ellen Urinyi or Dawn Kitz (627-4790) at Rockland BOCES.

Rockland BOCES Student Services partners with



families, school districts, community-based organizations, and county agencies to produce outstanding educational outcomes for children with special needs at all levels of ability. Programs are open to students residing in Rockland and neighboring counties in New York and New Jersey.

Orange and Rockland Utilities, Inc.

supports community-based organizations and programs that enhance the quality of life in the communities we serve. O&R's philosophy regarding its contributions to community organizations is based on the belief that such contributions should directly benefit customers in O&R's service territory, with a particular emphasis on organizations and programs that are broad-based in terms of the population served.



Orange & Rockland

The National Council of Jewish Women (NCJW) is

a grassroots organization of volunteers and advocates who turn progressive ideals into action. Inspired by Jewish values, NCJW strives for social justice by improving the quality of life for women, children, and families by safeguarding individual rights and freedoms.



National Council of Jewish Women
Rockland Section

The Rockland Employment



Network

network is a group of public, not for profit, and private human services providers, who work together planning targeted activities to raise awareness and involvement in securing appropriate employment opportunities for individuals with disabilities.

The Successful Learning

Center is an inclusive community program which provides collegiate based classes for nontraditional learners. Our students value learning and want to continue to learn. The SLC welcomes students of varying abilities such as individuals with visual or hearing impairments, spinal cord injuries, Down Syndrome, Autism, Traumatic Brain Injury, speech and language disabilities, disabled veterans, and stroke survivors. The SLC does not just serve individuals with developmental disabilities, but all students interested in continuing their education within the community. OPWDD eligibility not required.



NOTICE OF NONDISCRIMINATION

Rockland BOCES does not discriminate on the basis of an individual's actual or perceived race, color, religion, creed, ethnicity, national origin, citizenship status, age, marital status, partnership status, disability, predisposing genetic characteristics, sexual orientation, reproductive rights decisions, gender (sex), gender identity, military status, veteran status, domestic violence victim status or political affiliation, and additionally does not discriminate against students on the basis of weight, gender identity, gender expression, and religious practices or any other basis prohibited by New York State and/or federal non-discrimination laws in employment or its programs and activities. Rockland BOCES provides equal access to the Boy Scouts and other designated youth organizations. Inquiries regarding Rockland BOCES non-discrimination policies or procedures should be directed to either:

1.) Yasmin Helou-Caré, Ph.D., Executive Director of Human Resources
Civil Rights Compliance Officer
Rockland BOCES
65 Parrott Road, West Nyack, NY 10994
(845) 627-4729
rbcompliance@rboces.org

2.) United States Department of Education, Office of Civil Rights