

# DEXTER SOUTHFIELD



20 Newton Street  
Brookline, MA 02445  
[www.dextersouthfield.org](http://www.dextersouthfield.org)  
(617) 522-5544  
CEEB code: 220262

**Todd Vincent**  
*Head of School*  
[tvincen@dextersouthfield.org](mailto:tvincen@dextersouthfield.org)

**Brian LaRochelle**  
*Director of College Counseling*  
[blarochelle@dextersouthfield.org](mailto:blarochelle@dextersouthfield.org)

**Allison Ranz**  
*Associate Director of  
College Counseling*  
[aranz@dextersouthfield.org](mailto:aranz@dextersouthfield.org)

**Jane Croke**  
*Associate Director of  
College Counseling*  
[jcroke@dextersouthfield.org](mailto:jcroke@dextersouthfield.org)

**Kate Brown**  
*Assistant Director of  
College Counseling*  
[kbrown@dextersouthfield.org](mailto:kbrown@dextersouthfield.org)

**Casey Bobo**  
*Vice President of Strategic Planning*  
[cbobo@dextersouthfield.org](mailto:cbobo@dextersouthfield.org)

**Lindsey Cunningham**  
*College Counseling Office Manager*  
[lcunningham@dextersouthfield.org](mailto:lcunningham@dextersouthfield.org)

## “Our Best Today, Better Tomorrow” School Profile 2023-2024

**Dexter Southfield** is an independent, college-preparatory, coeducational day school. Dexter School (founded in 1926) and Southfield School (founded in 1992) merged in 2013.

### SCHOOL OVERVIEW

<b>Grades</b>	PreK through Class 12
<b>Enrollment</b>	1,076 students
<b>Upper School Enrollment</b>	441 students
<b>Graduates Attending College</b>	100% matriculate to four-year colleges
<b>Communities Represented</b>	100
<b>Percentage of Upper School Students Awarded Financial Aid</b>	37%
<b>Collegiate Athletes</b>	36 students from the Class of 2023 (35%) participate in collegiate athletics
<b>School Memberships &amp; Accreditation</b>	NAIS, AISNE, NACAC, BISCCA, ACCIS New England Association of Schools and Colleges

### ACADEMIC PROGRAM

<b>2023-2024 Course Catalog</b>	<a href="http://dextersouthfield.org/course-catalog">dextersouthfield.org/course-catalog</a>
<b>Course Expectations</b>	5 academic courses per semester
<b>AP Courses</b>	19 courses *Enrolling in 3 or more AP courses requires approval.
<b>Honors Courses</b>	40 courses
<b>Class Rank</b>	Students are not ranked.
<b>Reporting Discipline</b>	The School does not disclose student discipline to colleges unless the School decides that a student's standing at Dexter Southfield is in doubt because of the student's actions.
<b>The Cum Laude Society</b>	Induction for Class 12 students is in the fall and spring and is based on scholarship, character, and devotion to excellence.

## CLASS OF 2024

CLASS 12  
99 students

HIGHEST WEIGHTED GPA  
5.04

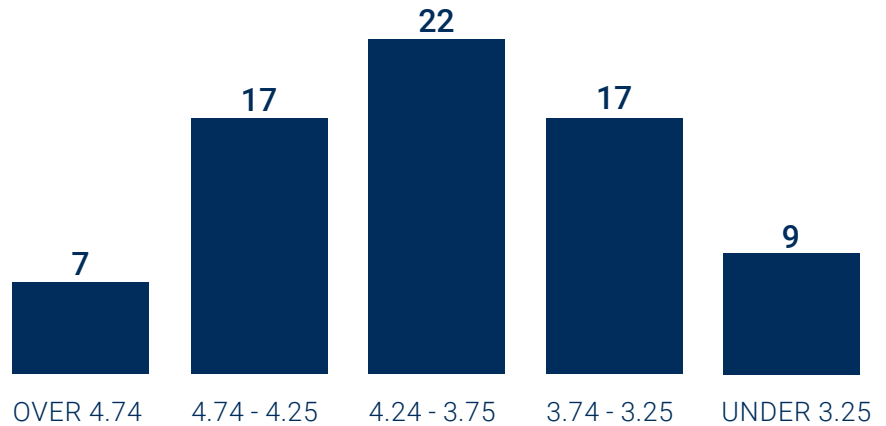
## GPA GRADING SCALE

A student's cumulative unweighted GPA is inclusive of all academic course grades earned through the last completed school year. **The end-of-year GPA is given one additional point for Honors and AP courses.** *Individual grades are not weighted.*

GPA GRADING SCALE			
LETTER GRADE	NUMBER VALUE	LETTER GRADE	NUMBER VALUE
A+	(4.30+)	C+	(2.30-2.69)
A	(4.00-4.29)	C	(2.00-2.29)
A-	(3.70-3.99)	C-	(1.70-1.99)
B+	(3.30-3.69)	D+	(1.30-1.69)
B	(3.00-3.29)	D	(1.00-1.29)
B-	(2.70-2.99)	D-	(0.70-0.99)

## CLASS OF 2024 WEIGHTED GPA DISTRIBUTION

# OF STUDENTS (ONLY THOSE ATTENDING 3+ YEARS)



## HONORS & HIGH HONORS DISTINCTIONS

Awarded at the end of Semester I and Semester II.

- **Academic Honors:** Students who earn a weighted GPA of 3.7 (A-) or above and have no grade lower than a B- for their courses will receive the distinction of Academic Honors.
- **Academic High Honors:** Students who earn a weighted GPA of 3.7 (A-) or above and have no grade lower than an A- for their courses will receive the distinction of Academic High Honors.

## GRADUATION REQUIREMENTS

- **Public Speaking:** Students learn to speak and write effectively by preparing and delivering an annual public address to fellow students, faculty, and administrators.
- **Community Service:** All students must complete at least 40 hours of community service prior to graduation.
- **Senior Independent Learning Experience:** In May, seniors explore passions or new areas of interest through real-world experiences. Students are required to complete 90 hours of supervised activity, reflect about their experience, and present to a panel of peers and faculty to showcase their culmination of work.



DEXTER SOUTHFIELD

**MOST RIGOROUS COURSES OFFERED BY GRADE (HONORS AND AP COURSES ONLY)**

DEPARTMENT	CLASS 9	CLASS 10	CLASS 11	CLASS 12
<b>ENGLISH</b> 4 Years	Literary Study Honors	Individual in Society Honors	› American Literature Honors › <b>AP English Language and Composition</b>	› <b>AP English Literature and Composition</b> › Modernism: A Culture Honors › Ethical Philosophy Honors Seminar › Rise of Gothic and Horror in Literature Honors › World Literature Honors
<b>HISTORY</b> 3 Years with US History	Ancient World History Honors	Modern World History Honors	› <b>AP US History</b> › US History Honors	› <b>AP Art History</b> › <b>AP Economics</b> › <b>AP Comparative Government and Politics</b> › <b>AP Human Geography</b> › Constitutional Law Honors › Economics Honors › Today's China & Japan Honors › Understanding 9/11 Honors
<b>MATH &amp; COMPUTER SCIENCE</b> 3 Years with Algebra II	› Algebra II Honors › Geometry Honors		› Pre-Calculus Honors › <b>AP Statistics</b> › <b>AP Calculus AB</b> › <b>AP Calculus BC</b> › Advanced Math Topics Honors (post AP) › Calculus Honors › <b>AP Computer Science</b>	
<b>LANGUAGE</b> 3 Levels	› French II, III, IV, V Honors › <b>AP French Language and Culture</b> › Latin II, III Honors › Latin Literature Honors I		› Latin Literature Honors II › Spanish II, III, IV, V Honors › <b>AP Spanish Language and Culture</b> › <b>AP Spanish Literature</b>	
<b>LAB SCIENCE</b> 3 Years	Biology Honors	Chemistry Honors	Physics Honors	› <b>AP Biology</b> › <b>AP Chemistry</b> › <b>AP Environmental Science</b> › <b>AP Physics Mechanics</b> › MEDscience Honors › MEDscience Lab Honors › Immunology Honors
<b>VISUAL &amp; PERFORMING ARTS</b> 3 Semesters	› <b>AP Studio Art</b> › Advanced Studio Art Honors › Portfolio Prep Honors			

**MEDscience Honors:** MEDscience combines hands-on clinical cases and classroom lessons. Students travel to Harvard Medical School weekly and participate in ER-simulated case studies. Entry to the program is competitive for Class 12 students.

[Click here](#) to view the 2023-2024 Course Catalog



## Five-Year College Matriculation (Classes 2019-2023)

Dexter Southfield graduates have matriculated to the following colleges and universities over the past five years.

### Ten or more DXSF graduates enrolled:

Boston College  
Boston University  
College of the Holy Cross  
Syracuse University  
Trinity College  
Tufts University  
Union College

### Five or more DXSF graduates enrolled:

Babson College  
Bentley University  
Bucknell University  
Colby College  
Colgate University  
Elon University  
Hamilton College  
Harvard College  
Northeastern University  
Providence College  
St. Lawrence University  
Santa Clara University  
Tulane University  
UMass Amherst  
University of Miami  
University of Michigan  
University of Vermont  
Wesleyan University

### At least one DXSF graduate enrolled:

American University  
Amherst College  
Anna Maria College  
Arizona State University  
Assumption University  
Bates College  
Belmont University  
Bowdoin College  
Brandeis University  
Brown University  
Carleton College  
Case Western Reserve University  
The Catholic University of America  
The Citadel: Military College of SC  
Clark University  
Clemson University  
College of Charleston  
Colorado College  
Columbia University  
Connecticut College  
Cornell University

Dartmouth College  
Davidson College  
Duke University  
East Carolina University  
Emerson College  
Endicott College  
**Fairfield University**  
Flagler College  
**Florida Atlantic University**  
Fordham University  
Furman University  
Georgetown University  
**George Washington University**  
Hobart and William Smith Colleges  
Ithaca College  
Indiana University Bloomington  
Kalamazoo College  
Kenyon College  
**Lehigh University**  
**Loyola Marymount University**  
Loyola University Maryland  
Massachusetts Bay Community College  
**Massachusetts Institute of Technology**  
**Merrimack College**  
Michigan State University  
**Middlebury College**  
**Missouri State University**  
Murray State University  
Newcastle University  
**New York University**  
**Northwestern University**  
**The Ohio State University**  
Ohio Wesleyan University  
Old Dominion University  
Olin College of Engineering  
Quinnipiac University  
Rensselaer Polytechnic Institute  
Rhodes College  
Rice University  
Roger Williams University  
Rollins College  
**Sacred Heart University**  
**Saint Anselm College**  
Saint Joseph's University  
Saint Louis University  
**Saint Michael's College**  
San Diego State University  
**San Jacinto College**  
Sarah Lawrence College  
Savannah College of Art & Design  
Simmons University

**Skidmore College**  
Southern Methodist University  
Southern New Hampshire University  
**Stanford University**  
Stevenson University  
Suffolk University  
**Temple University**  
**Texas Christian University**  
University of Alabama  
University of California, Berkeley  
University of California, Santa Barbara  
**United States Coast Guard Academy**  
University College Dublin  
**University of Chicago**  
University of Colorado Boulder  
University of Connecticut  
**University of Delaware**  
**University of Denver**  
UMass Dartmouth  
University of Illinois Urbana-Champaign  
University of Limerick  
**UMass Lowell**  
University of Mississippi  
University of New England  
University of New Hampshire  
**University of New Haven**  
University of Notre Dame  
University of Pennsylvania  
University of Richmond  
**University of Rochester**  
University of Southern California  
**University of St. Andrews**  
University of Tennessee-Knoxville  
University of Texas at Austin  
**University of Virginia**  
**University of Wisconsin-Madison**  
Vanderbilt University  
Vassar College  
**Villanova University**  
**Virginia Tech**  
Wagner College  
Wake Forest University  
**Washington University in St. Louis**  
Wentworth Institute of Technology  
West Virginia University  
Wheaton College (IL)  
Wheaton College (MA)  
Worcester Polytechnic Institute  
**Xavier University**  
Yale University