

A photograph of a male teacher with glasses leaning over a desk, smiling and looking at two young students. The students, a girl with curly hair and a girl with long hair, are focused on writing in a spiral notebook. The image is overlaid with a semi-transparent grey filter and white geometric line patterns on the left side.

Bedford City School District Planning Committee Meeting #3

December 7th, 2022





Agenda

1. Welcome
2. Guiding Principles Exercise
3. Recap of Last Session
4. Presentation
5. Master Planning Building Blocks
6. Next Steps
7. Q+A

A photograph of multiple hands of various skin tones stacked together in a circular formation on a light-colored surface. The hands are positioned with palms facing down, creating a sense of unity and teamwork. The image is overlaid with a semi-transparent green filter.

Guiding Principles

a set of moral values that establishes a framework for expected behavior and decision-making

Our Guiding Principles

2022



Our District's Educational Environments:

Will be welcoming,
safe, inclusive and
accessible

Will provide enhanced
learning environments
to support each
student as a whole
child

Will be attainable,
energy efficient and
sustainable on a
holistic level

Will provide a
connection to and from
all four of our
communities

Recap of Last Session



Career Tech + Partnerships

Questions:

1. What other ***partnerships*** would you like to explore in our new facilities?
2. What do you see as the ***careers of the future*** for our students?

Enrollment + Elementary Schools

Questions:

1. What do you think are the ***main reasons*** children within the district attend private or charter schools instead of Bedford City Schools?
2. What does a '***consolidated elementary school master plan***' mean/look like to you?

Career Tech + Partnerships



Enrollment + Elementary Schools



Career Tech + Partnerships

What other ***partnerships*** would you like to explore in our new facilities?

- Desire to bring career tech programming and partnerships back to the district
- Provide more job training + internship opportunities
- Building to be multi-use for community programming/courses and an early college wing
- Other offerings
 - CTAG or Certifications/College Credits
 - Non-traditional pathways to college/career
- Other partnerships to explore:
 - ThermoFisher
 - Art of Beauty
 - MetroHealth
 - Petitti
 - ISSA
 - ISC
 - Villages/Cities
 - Universities/Colleges
 - Metroparks/Bedford Parks + Rec
 - Library

Career Tech + Partnerships

What do you see as the ***careers of the future*** for our students?

- Current Careers: Cosmetology, Construction, Nursing
- Future Careers: Infrastructure IT
- Desire for these programs in the future:
 - Agriculture/Horticulture
 - Adult Education
 - Fine Arts
 - CDL
 - Pipefitting
 - Welding
 - Electrical

Questions we heard:

What is our current funding and participation in our current programs?

What internship opportunities currently exist?

Enrollment + Elementary Schools

What does a '**consolidated elementary school master plan**' mean/look like to you?

- A **safe** space
- **Relationships + consistency**
- Campus setting?
- **Community** connection
- Marketing/**telling our story** of what we do well
- **Prefer grade banding** to allow collaboration between teachers and equity for students



Enrollment + Elementary Schools

What do you think are the **main reasons** children within the district attend private or charter schools instead of Bedford City Schools?

- Word of mouth
- Safety, Fights
- Scores
- Property values
- School choice/types and more freedom/flexibility elsewhere
- STEM options, other program options
- Resources for education
- Environment, facilities
- Food choices, dress code
- Communication

Questions we heard:

What programs have been put into place in the past year or so that may be addressing why students have left the district in the past?

Can we fit our elementary/middle students onto one site for a campus setting?

Presentation



Programming added in the past 1-2 years



SEL Interventionist

Intramural programming

Tutoring programming (Sylvan & NorthCoast)

Gifted and Talented programming

Hired an EL facilitator to facilitate our EL programming

Home Libraries

Expanded Preschool

Early Intervention Services

Credit Recovery Programming at the High School

Opened Excel Tech School

Leveraged federal funding to increase math, reading and data nights

Facilitated our Business Advisory Meeting

Revised our course of study manual

Arts academy after school programming for grades 3-8

One-on-one summer music lessons

Cleveland Cavs academy

Students of Excellence program

Student interest surveys to establish courses

Dads on Duty

Watchdogs Dads

SOAR programming

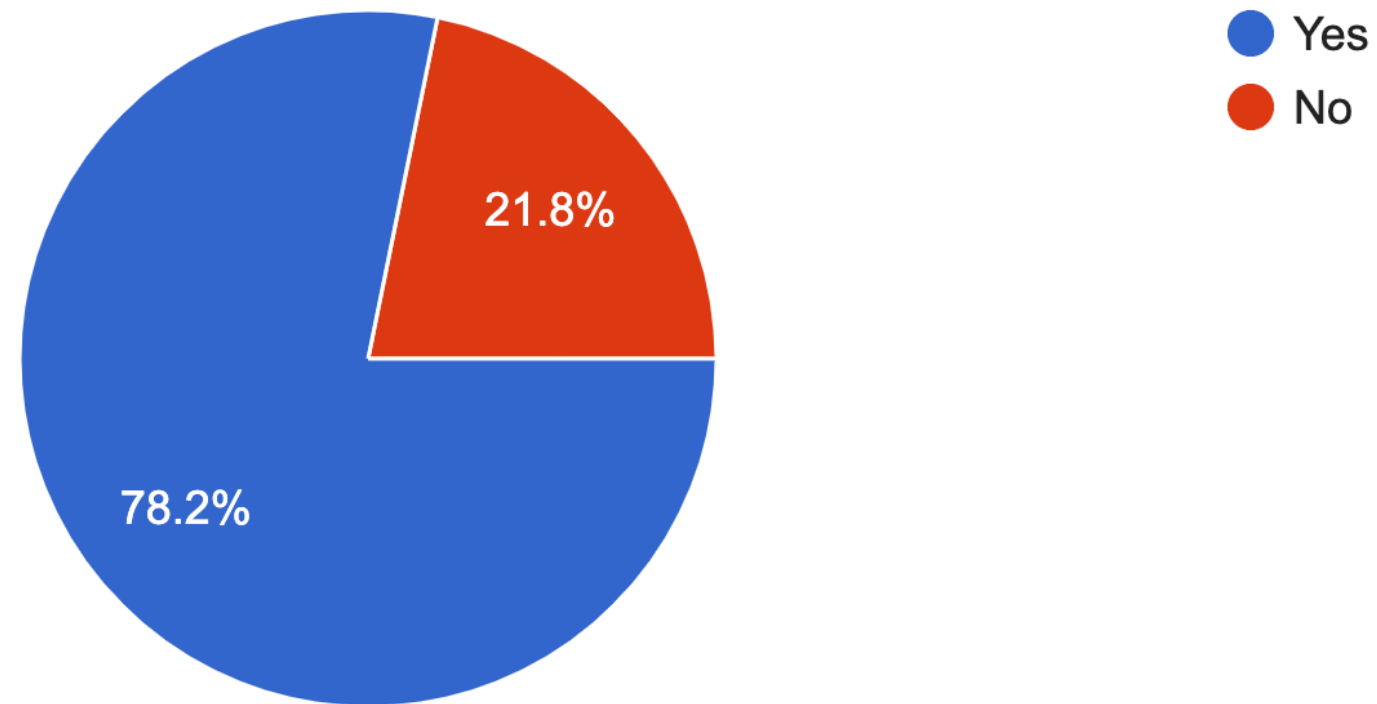
Autumn Festival (Family Engagement Event)

Education Equity Group (EGG)

CTE Survey Data Results from BHS Students

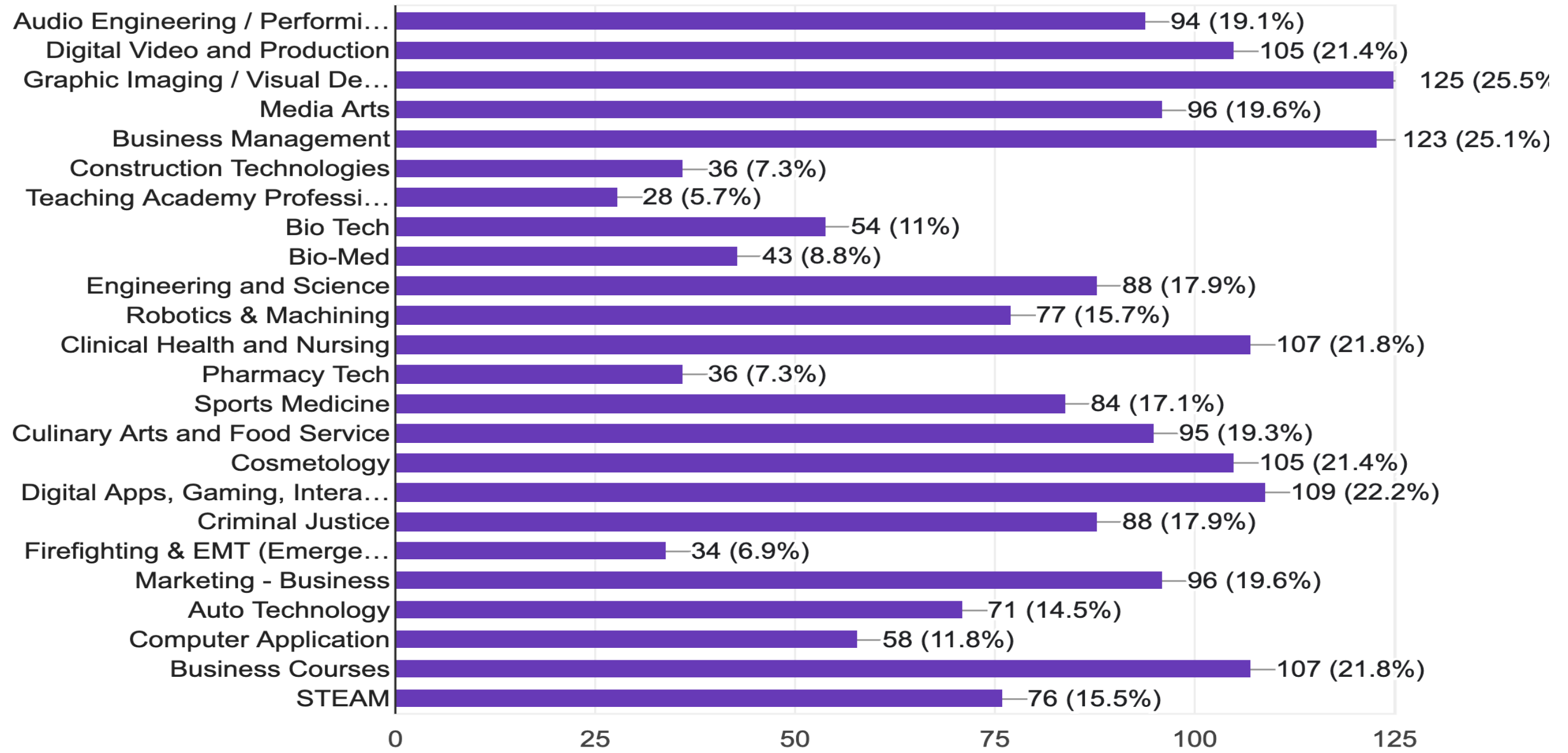
If provided an opportunity to take a CTE course here at Bedford, would you?

491 responses



Please choose all programs that you are interested in.

491 responses



CTE Enrollment Per Program (Consortium)

Location	Program	Juniors	Seniors
CH/UH	Audio Engineering	1	0
CH/UH	Pharmacy Tech	2	0
CH/UH	Cosmetology	3	0
CH/UH	Engineering & Science Tech.	1	0
CH/UH	Exercise Science & Sports	0	1
Maple Heights	Cosmetology	4	6
Maple Heights	Criminal Justice	4	0
Maple Heights	Construction	4	2
Maple Heights	Teacher Academy	1	0
Shaker Heights	Engineering	7	1
Warrensville Heights	Culinary	3	0
Warrensville Heights	Fire/EMT	1	0
Warrensville Heights	Graphic Imaging/Visual Design	1	1
Total		32	11

CTE Enrollment Per Program (at Bedford City Schools)

Location	Program	Total Students
BHS	Health Science & Technology	11
BHS	Medical Terminology	11
BHS	Patient Centered Care	11
BHS	Mental Health	12
BHS	Anatomy/Physiology	3
BHS	Biochemistry/Cell Biology	2
BHS	Biochemistry of Health	3
BHS	Biotech Health/Diseases	3
BHS	Auto Tech Experience	0
BHS	Maintenance	17
BHS	Steering, Suspension & Brakes	17
BHS	Electrical Systems	3
BHS	Engineer Performance	3
BHS	Information Technology	23
BHS	Game Design	18
BHS	Computer Animation Interactive App Development	10
BHS	Business Foundations	44
BHS	Fundamentals of Business & Administrative Services	63
BHS	Office Management	19
BHS	Personal Finance	82
BHS	Computer Apps	25
BHS	Marketing Application	21
BHS	Digital Marketing & Mgt	9
BHS	Strategic Entrepreneurship	10
BHS	Employability in Marketplace	95
BHS	International Business	7
Heskett	Computer Apps	58
Heskett	Business Foundations	47
Total		627

A diverse group of approximately 15 professionals of various ages and ethnicities are posed together in a bright, minimalist setting. They are dressed in a variety of work-related attire, including medical scrubs, a lab coat, business suits, and construction gear like a hard hat and safety vest. The group is arranged in a loose cluster, with some individuals holding documents or equipment, conveying a sense of collaborative teamwork across different sectors.

Employability in the Marketplace

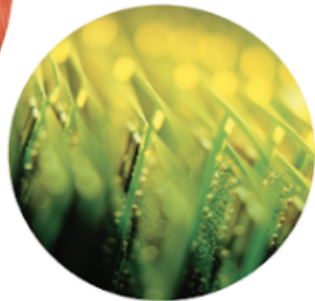
ODE Requirements



Career Awareness

Elementary Grades (K-5)

Students become familiar with careers through learning that connects classroom instruction to future work. Career awareness strategies show students various types of careers and stimulate interest in future work.



Career Exploration

Middle Grades (6-8)

Students explore their career interests through embedded activities. Career exploration strategies are opportunities for students to discover work environments and understand the various aspects of the workplace. Strategies include tools and instruments that help students understand and appreciate their strengths and interests. Students start plans for their future with career information and postsecondary education data. Plans include course selection and planning as well as career aspirations and goals.

Career Planning

High School (9-12)

Students continue career exploration while focusing on career planning. Activities provide advanced experiences that offer hands-on opportunities in a workplace. Career planning strategies focus on making clear links between career options and educational decisions. Students develop the skills to revisit previous exploration and planning strategies as they face career changes throughout life.

Redefining the Goal of Education

[Redefining the Goal of Education](#)



Career Tech: Square Footage, Cost and Funding Implications



Different grant and/or funding opportunities exist and may become available to us in different ways depending on our participation within the consortium

The OFCC will offer a baseline of co-funded square footage based upon our current career tech enrollment

9,073 co-funded square feet
\$3.62 M budget

Board of Education and dedicated BCSD team working through these programming and offering implications as ***curriculum, partnerships and future planning are all affected.***

To move forward, ***this committee can best plan to maximize co-funded and co-utilized spaces in our new master plan,*** and plan for any future connections that may become possible.

Master Planning Building Blocks

Utilization of existing sites and impact of those sites on community support for this project



Site Size Guidelines

School Configuration	OFCC Recommended Site Size
Elementary School	10 acres + 1 acre per 100 students
Middle School	20 acres + 1 acre per 100 students
High School	35 acres + 1 acre per 100 students
K-12 School	40 acres + 1 acre per 100 students
K-8 School	20 acres + 1 acre per 100 students
6-12 School	35 acres + 1 acre per 100 students
Career Tech + High School	35 acres + 1 acre per 100 students

In Urban areas, it may be necessary to reduce the size of the school site due to numerous existing and future development factors.

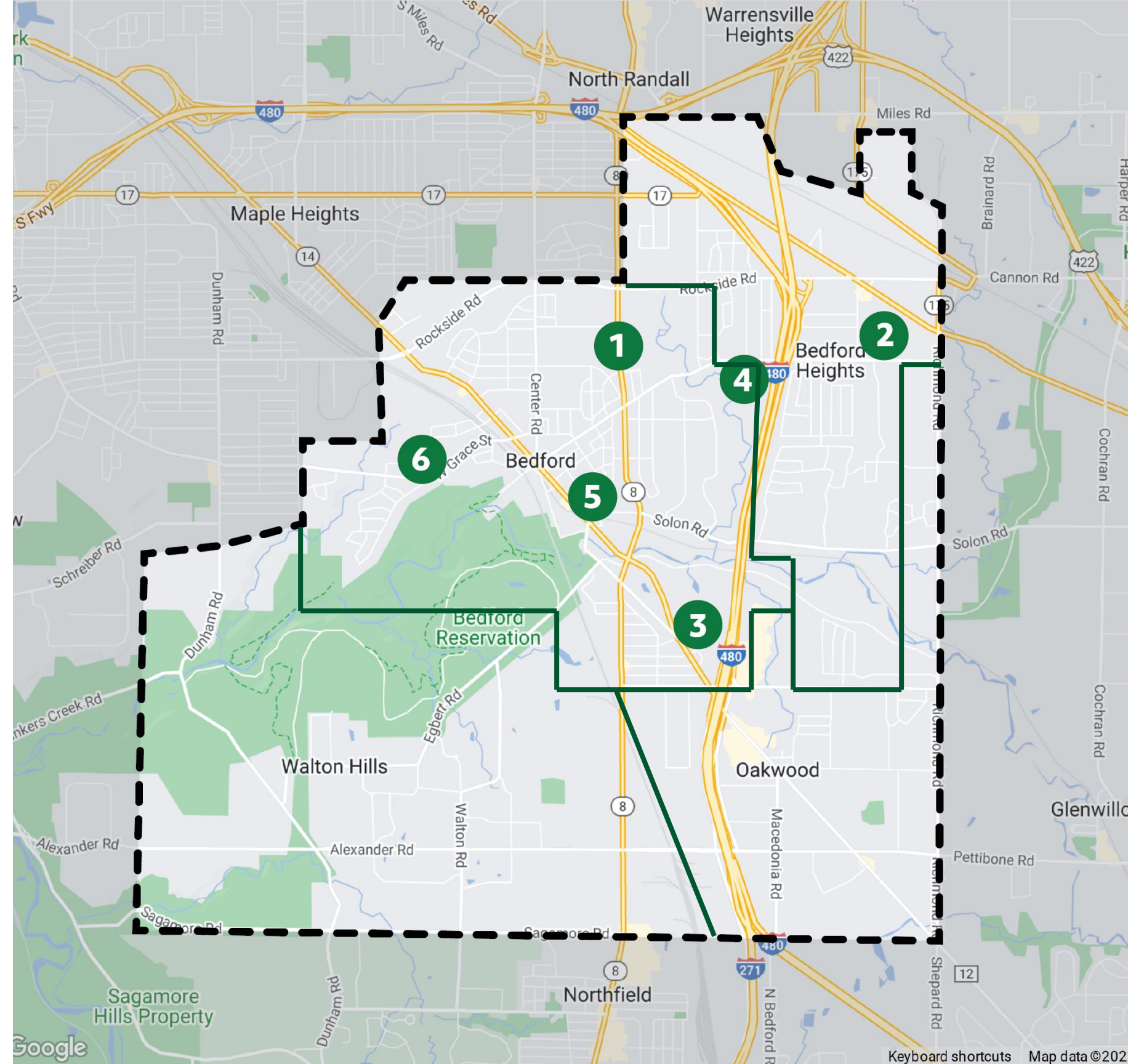
- Decrease the footprint percentages from the ideal target sizes identified in the Proposed Building Footprint chart in paragraph D that follows.
- Decrease the amount of visitor and staff parking to be provided.
- Decrease the amount of student parking provided.
- Decrease the amount of mechanical yard space to be provided.
- Delete the bus drop-off and parent drop-off areas and provide a curbside service only.
- Reduce/decrease the size/number of playfields/playgrounds to be provided.

Site Size Requirements for BCSD Enrollment Projections

School Configuration	OFCC Recommended Site Size
New PK-2	17 acres
New 3-5	17 acres
New 6-8	26 acres
New 9-12 + CT	44 acres
New 6-12 School + CT	48 acres
New 7-12 School + CT	46 acres

Existing Buildings

1. Bedford High School
2. Heskett Middle School
3. Carylwood Intermediate
4. Columbus Intermediate
5. Central Primary
6. Glendale Primary



Existing Buildings



Bedford High School



Heskett Middle School



Carylwood Intermediate School



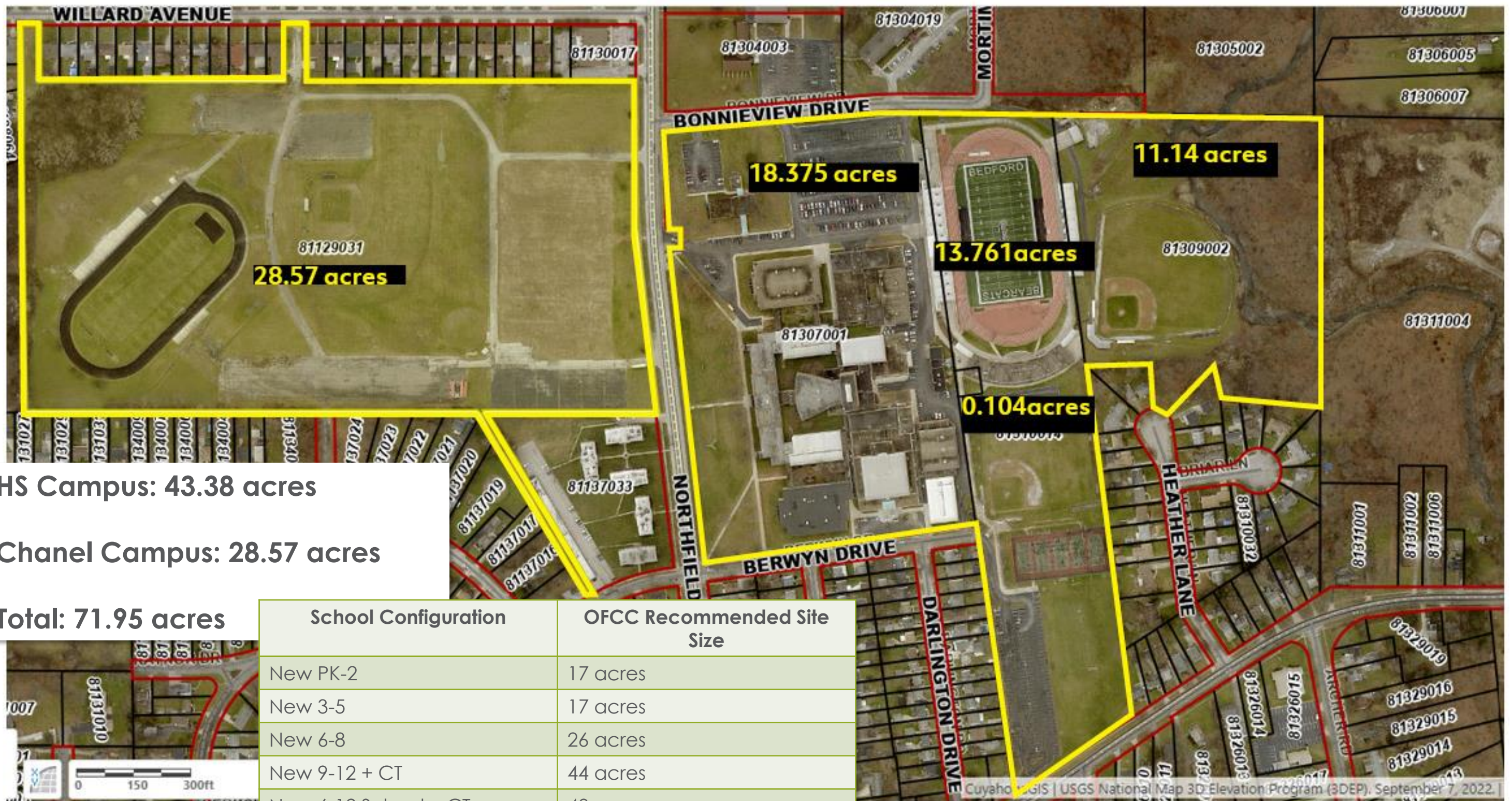
Columbus Intermediate School



Central Primary School



Glendale Primary School



HS Campus: 43.38 acres

Chanel Campus: 28.57 acres

Total: 71.95 acres

School Configuration	OFCC Recommended Site Size
New PK-2	17 acres
New 3-5	17 acres
New 6-8	26 acres
New 9-12 + CT	44 acres
New 6-12 School + CT	48 acres
New 7-12 School + CT	46 acres

28.94 acres

School Configuration	OFCC Recom. Site Size
New PK-2	17 acres
New 3-5	17 acres
New 6-8	26 acres
New 9-12 + CT	44 acres
New 6-12 School + CT	48 acres
New 7-12 School + CT	46 acres



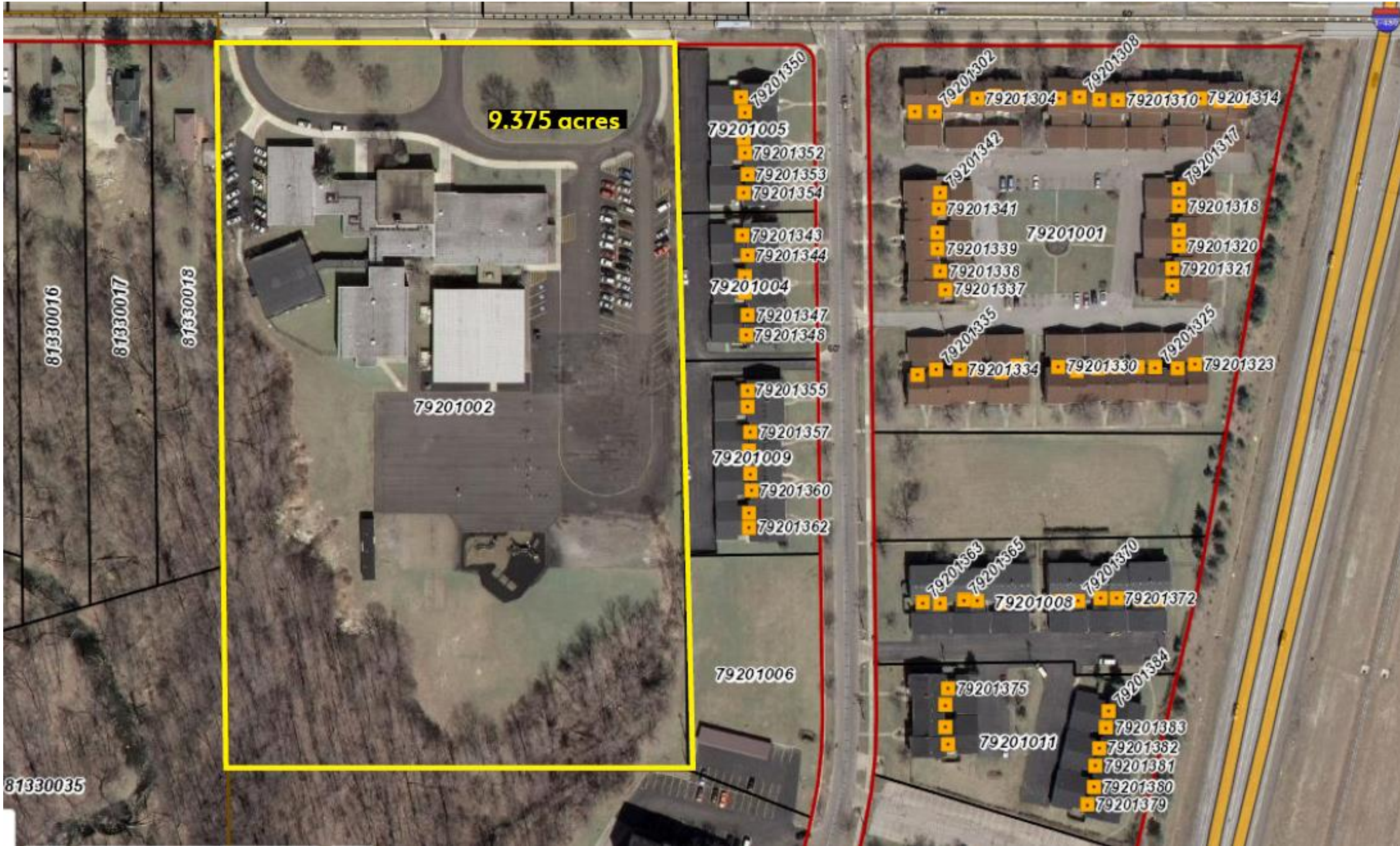
Carylwood
Intermediate

4.82 acres



Columbus
Intermediate

9.375 acres



Central
Primary

4.89 acres



Glendale
Primary

4.74 acres



Next Steps

1. OFCC Base Plans
2. Master Plan Option Discussion
3. Review Funding and Costs
4. Locally Funded Initiatives Presentation/Discussion
5. Defining Priorities



Q&A

