



District English Learner Advisory Committee (DELAC)

Educational Services
October 9, 2020
9-10 AM

Agenda

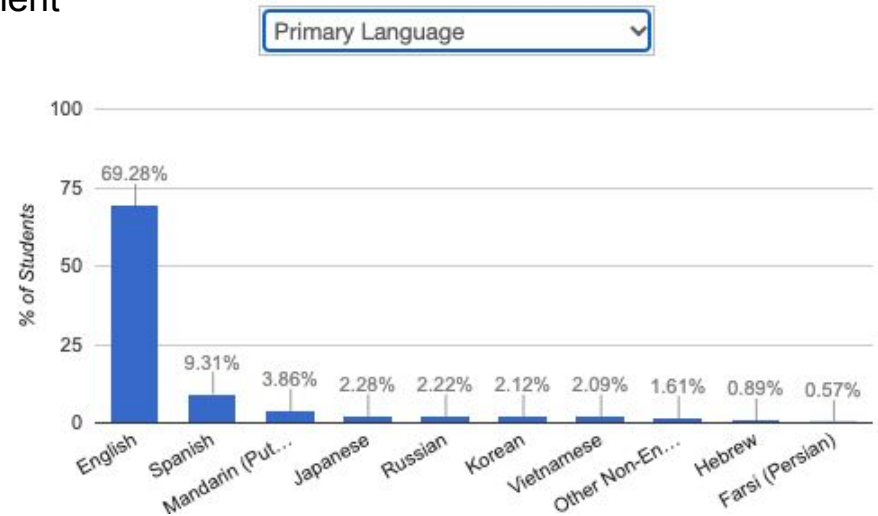
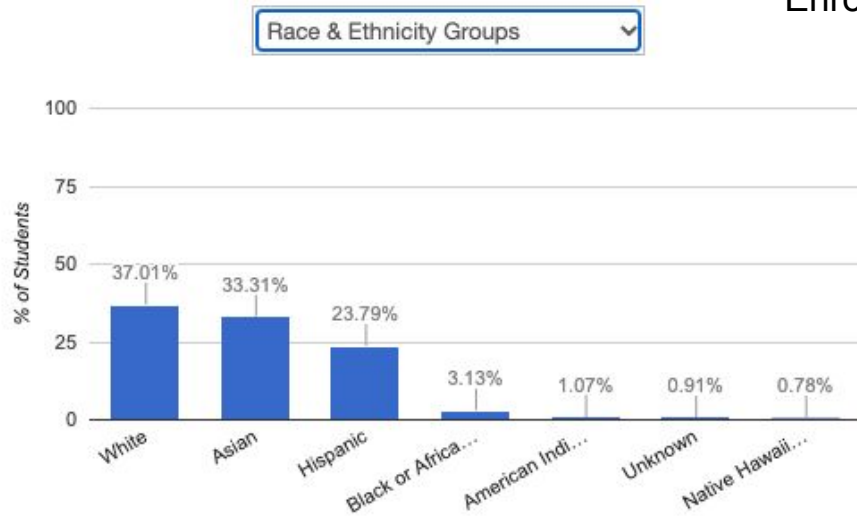
- Welcome
- Updates
- Consolidated Application 2020-21
- English Learner Program & Services
- Learning Continuity & Attendance Plan
- Parent Engagement
- Next Steps
- Resources

Updates

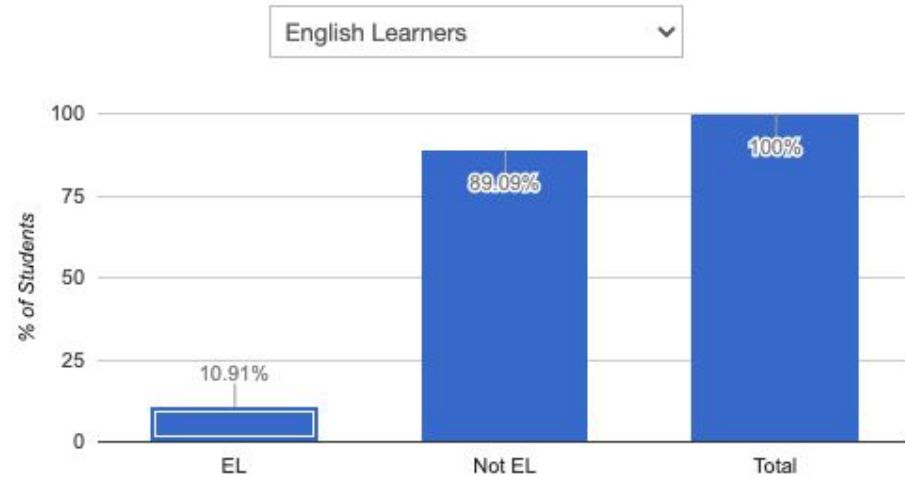
- ELPAC Testing
 - Initial
 - 45-day Extension - November 6 to complete without penalty
 - New Online Test
 - Remote administration
 - 110 students from all 6 sites
 - Summative
 - 2019-20 Fall Summative (only completed 4 sites before school closure)
 - 2019-20 Make-up (suspended)
 - 2020-21 Fall (new online assessment)
- Reclassification 2020-21
 - Students with ELPAC Level 4 who completed the 2019-20 Summative ELPAC - TBD
 - Potentially 40 students in grades 6-8

By the Numbers - Race/Ethnicity & Primary Language

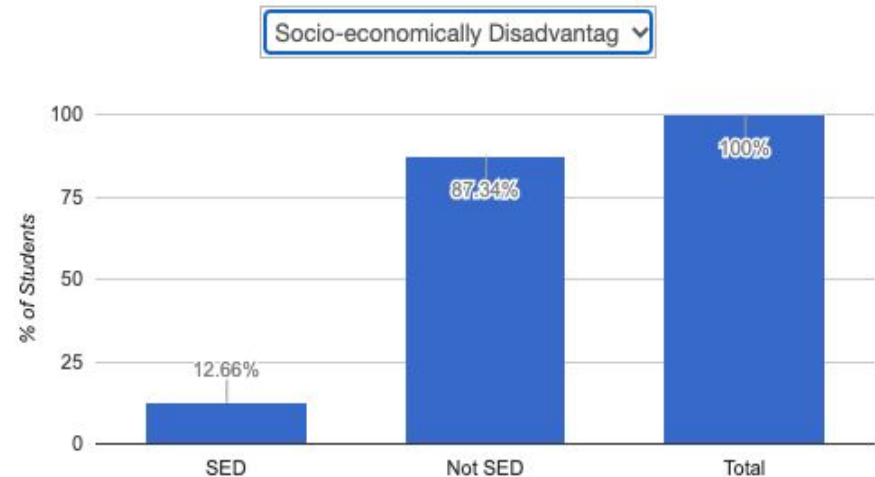
3191
Total
Enrollment



By the Numbers - English Learners & Low-Income



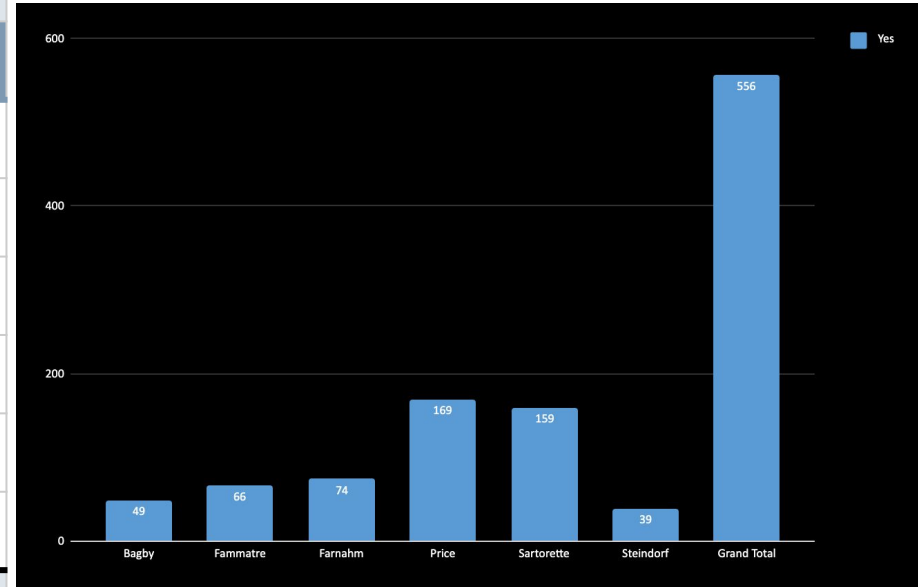
348/10.9%



404/12.6%

By the Numbers - Unduplicated Pupil Count

Student Count by Unduplicated	Unduplicated	
School	Yes	Grand Total
Bagby	49	49
Fammatre	66	66
Farnham	74	74
Price	169	169
Sartorette	159	159
Steindorf	39	39
District Total	556	556



17%

Consolidated Application 2020-21

- Application for Categorical Programs for Increased & Improved Services
 - Title I, Part A (Basic Grant) -
 - Targeted Assistance Title I Programs
 - Priority to Low-income Students & Foster/Homeless Youth
 - Parent Education/Engagement
 - Targeted Staff Professional Development
 - Title II, Part A (Supporting Effective Instruction)
 - Staff Professional Development
 - Title III English Learner & Immigrant
 - English Learner/Immigrant Program & Services
 - Parent Education/Engagement
 - Title IV, Part A (Student Support)
 - Additional Instructional Support or Enrichment

ConApp Projected Funding for 2020-21

Program	Title	Projected Allocation
Title I	Basic Services	\$ 87,000
Title II	Educator Quality	\$ 35,000
Title III	Immigrant	\$ 13,000
Title III	English Learner	\$ 35,000
Title IV	Student Support	\$10,000

NOTE: Pending legislative action to approve and release funds.

Supplemental Programs & Services

- Instructional Coaching and professional development for staff
- Academic support – school hours, before/after school, intersession, summer school
- Small group instruction
- Push in/Pull additional academic support during regular day
- Mental health & counseling services
- Supplemental curriculum/learning materials
- Personnel costs for crisis intervention, family support, academic intervention
- Services that address barriers to learning – homelessness, ELLs, foster youth, economically disadvantaged students

Learning Continuity & Attendance Plan 2020-21

Increased and Improved Services for English Learners

Access	<ul style="list-style-type: none">● Device and connectivity access are being applied across the entire district, but are primarily intended to provide access for English learners, low-income, and foster/homeless students who may not have full access at home.● Wi-Fi hotspots are also being provided as needed.
Engagement	<ul style="list-style-type: none">● Targeted outreach is occurring through Educational Services & Student Services Team to support our English learners, low-income, and foster/homeless youth students.● On case-by-case basis, staff is calling individual families and making home visits as needed.
Services	<ul style="list-style-type: none">● Teachers on Special Assignment providing support for the Virtual School Program, assessment, coordinating ELD and Tier II Services, classroom teacher support, professional development, and curriculum support.● Counseling Services at all sites● Language Line Translation/Interpreting Services

Addressing Learning Loss

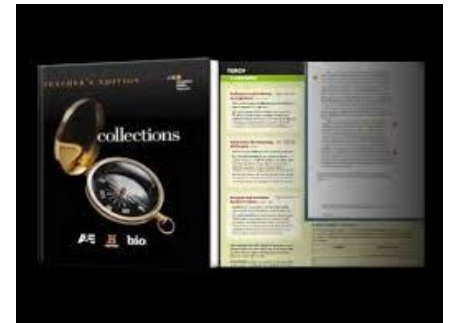
Primary means of addressing learning loss and accelerating learning for students will be the tiered instruction delivered through **synchronous(live) instructional** time.

Tier 1	All students will receive standards-aligned instruction focused on priority standard clusters.
Tier 2	Supports will be provided primarily through synchronous, small-group instruction that is targeted to identified student needs.
Tier 3	Students who require even more intensive support will be provided 1 on 1 instruction through individual sessions.

Integrated and Designated English Language Development

Core English Language Arts/English Language Development Program

- State Framework
 - Alignment of ELA and ELD Standards
 - Integrated & Designated ELD
- Elementary - Benchmark Advanced
 - Board Adopted 2018-19
 - 2019-20: First Year of Implementation
 - 2020-21: Second Year of Implementation
- Middle School - HMH Collections
 - Board Adopted in 2019-20
 - Mid-year Year Implementation 2019-20
 - 2020-21: Initial Implementation

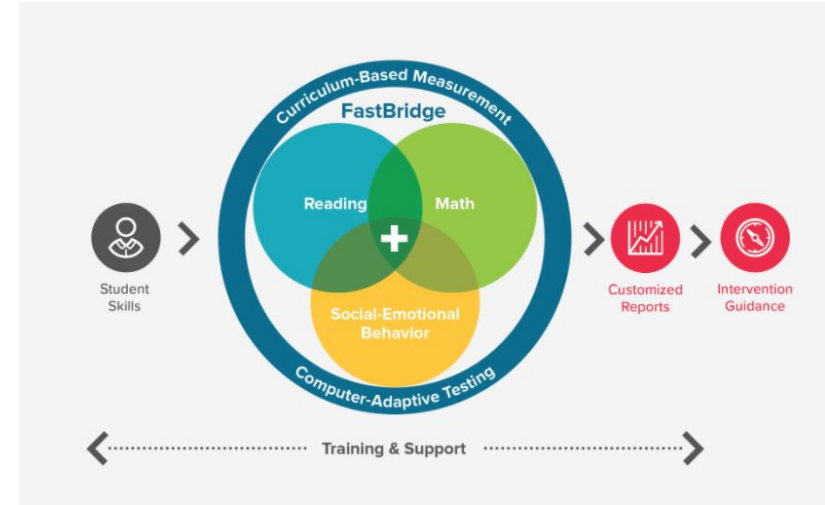


Addressing Learning Loss

Starting with Assessment

CSD Comprehensive Assessment Plan 2020-21

- English Language Proficiency Assessment for California
 - Initial & Summative
- FastBridge Assessment Suite
 - ELA & Math Screening
 - Curriculum Based Measurement (CBM)
 - Social Emotional Learning Screening
 - earlyReading & earlyMath Screening (TK-K) in 2021-2022



Addressing Learning Loss

Targeted Services

- Leveled Literacy Intervention (LLI) - Elementary (1-5)
 - Remote small group intensive reading intervention
 - Priority on students with “high risk”
 - Target date - October 26
- FastForward Reading - Middle School (6-8)
 - ELD Block
 - ELs with ELPAC Levels 1 & 2

Additional Supplemental Programs

- Imagine Learning Language & Literacy & Imagine Math
 - TK-5 (All students) & 6-8 (Students with Special Needs)

Additional Program Options to Consider

Joy School English



- [Quick Introduction](#)
- Focused on Oral English Language Development
- TK-K
- English Learners Only
- Looking to pilot the program
- Estimated Cost: \$150/student (\$15K annual)
- Title III Funds

Grammar Gallery

- [Quick Introduction](#)
- [Language and Grade Levels](#)
- TK-8
- English Learners
- Estimated Cost
 - \$5K/Annual
- Title III Funds

Grammar Gallery At-A-Glance

What is it?

- A state-of-the-art grammar program delivered via the Internet and aligned to the Common Core Standards
- A research-based core or supplemental program

Who is the target audience?

- Students in grades K-12, especially English learners

What does it do?

- Provides teachers and students with hundreds of structured language practice resources, including a wide range of reading and writing instructional materials

What are the technology requirements?

- Computer and access to the Internet
- Perfect for both high tech (iPads, interactive whiteboards) and low tech (overhead projector, printed copies) contexts



Parent Engagement



- English Learner Parent Information Night - Nov/Dec
- EL Parent Survey - Nov
 - EL Programs & Services
 - Parent Language Group Network
- Parent Workshops/Webinars
 - **October 14th - Supporting Families in Distance Learning**
 - 6:30-7p - Technology Support and Info. for Parents
 - 7:30-8p - Helping Students Help Themselves
 - **October 26th - Screenager Live Webcast**
 - 7-8:30p
- [Language Line Services](#)
- [Project Cornerstone](#)
 - [Parent Education](#); [Asset Building Champions](#); [Los Dichos](#)

Next Steps

- Complete initial ELPAC testing
- Reclassification Process
- Continue to provide PD for staff on new ELA/ELD Curriculum, especially on integrated & designated ELD - Tier 1 Instruction
 - Distance Learning
 - In-person
- Assess current programs & services
 - Determine what additional improved or increased services is needed
- Engage/Involve Parents
- New Local Control Accountability Plan Development Process for 2021-2022



[DELAC Input, Feedback, Suggestion and/or Question Form](#)

Next DELAC Meeting
December 4, 2020
9-10 AM



Resources

- CSD English Learner Program Website - <https://www.cambriansd.org/Page/3588>
- CA English Learner Website - <https://www.cde.ca.gov/sp/el/>
- CSD Language Program Information - <https://www.cambriansd.org/Page/3486>
 - Biliteracy Pathway Awards Program - <https://www.cambriansd.org/Page/3386>