

---

**Fairbanks North Star Borough School District**

**Student Assessment Results**  
**for the Fairbanks North Star Borough**  
**School District**

**2013-14 School Year**

**Prepared by:**  
**Ellis Ott, Ph.D., Research Associate**  
**Research & Accountability Department**

**September 16, 2014**



## TABLE OF CONTENTS

Executive Summary .....	<u>ii</u>
Introduction .....	<u>1</u>
Alaska School Performance Index .....	<u>2</u>
Alaska Standards Based Assessment Results .....	<u>3</u>
2014 Proficiency Rates by Grade Level.....	<u>3</u>
Comparison of Results from 2005 to 2014 .....	<u>4</u>
Results by Demographic .....	<u>8</u>
TerraNova Achievement Test Results .....	<u>13</u>
2014 Average NCE Scores by Grade Level.....	<u>13</u>
Comparison of Results from 2005 to 2014 .....	<u>14</u>
High School Graduation Qualifying Exam Results .....	<u>18</u>
Comparison of Results from 2007 to 2014 .....	<u>18</u>
Results by Demographic .....	<u>20</u>
WorkKeys Results .....	<u>21</u>
Comparison of Results from 2012 to 2014 .....	<u>22</u>
Results by Demographic .....	<u>22</u>
Conclusion .....	<u>25</u>
Appendix –Standards Based Assessment Data Tables	

## **EXECUTIVE SUMMARY**

This report presents district level results of the Alaska Standards Based Assessments (SBAs), Alaska High School Graduation Qualifying Exam (HSGQE), WorkKeys, and TerraNova taken by Fairbanks North Star Borough School District students during the 2013-14 school year. School level results are available in each school's Report Card to the Public. These are available from the district's Research and Accountability Department and will also be posted on the district's website at:

<http://www.k12northstar.org/departments/research/report-cards-public>.

### **Notable General Facts:**

- About 98% of district students were enrolled in 3-5 star rated schools.
- On average, students in the district outperform students in the state and nation on standardized assessments.
- District students show smaller SBA achievement gaps than students in the state.
- About 64% of students passed all three sections of the HSGQE on their first attempt in 10<sup>th</sup> grade.
- About 83% of 11<sup>th</sup> grade students acquired at least a “bronze” certificate on WorkKeys.

## **INTRODUCTION**

The four types of assessments included in this report are the Standards Based Assessments (SBAs), High School Graduation Qualifying Exam (HSGQE), WorkKeys, and TerraNova.

The SBAs and the HSGQE are tests in Reading, Writing, and Math that were developed specifically for Alaska's students (grades 3-10). Since 2009, SBAs have had the additional subject of Science in grades 4, 8, and 10. Before the 2014-15 school year, students were required to pass all three sections of the HSGQE (Reading, Writing, and Math), in addition to meeting district graduation requirements, to obtain a high school diploma. With the passing of Senate Bill 278, signed by Governor Parnell on May 13, 2014, the HSGQE was repealed. Beginning in 2014-15, taking the SAT, ACT, or WorkKeys assessments will be required for high school graduation. Also, the SBAs will be replaced with an online assessment aligned to new Alaska performance standards adopted by regulation in June 2012. The 2013-14 results for the SBA and HSGQE are reported in terms of percent Proficient (SBA) and percent Passing (HSGQE).

WorkKeys is a career readiness assessment for students in grades 11-12 (in 2013-14, mandatory for grade 11 and optional for grade 12) in the subjects of Reading for Information, Locating Information, and Applied Math. Students may receive career readiness certificates depending on their performance: bronze, silver, gold, and platinum. ACT, the developer of WorkKeys, profiled 10,000 jobs and identified the necessary scores to be successful in each job. According to ACT's profile of 10,000 jobs, a Platinum, Gold, Silver, and Bronze certificate reflect that the examinee has necessary foundational skills for 95%, 90%, 65%, and 35% of jobs, respectively.

The TerraNova tests are nationally normed standardized tests that cover skills in Reading, Language, Math, Social Studies, Science, and Spelling (grades 5 & 7). Results are reported in terms of Normal Curve Equivalent scores (NCEs fit on a normal bell-shaped curve centered at 50, with a standard deviation of 21.06). An NCE converts a national percentile rank (NPR) to a more

statistically sound measure that can be averaged and compared over time. Scores above 50 indicate above average performance and scores below 50 indicate below average performance.

In September 2012, Alaska implemented a new accountability system for public schools based on a flexibility waiver from the federal Elementary and Secondary Education Act (ESEA). The new system has been named the Alaska School Performance Index (ASPI). Schools are assigned a score from 0-100 and a star rating from 1 to 5.

More information and results from Alaska's assessment system are available from the State of Alaska's Department of Education and Early Development at: <http://www.eed.state.ak.us>.

### **ALASKA SCHOOL PERFORMANCE INDEX**

For the determination of the ASPI in 2013-2014, each school is assigned a score from 0-100 and a star rating from 1 to 5 using academic achievement and growth (SBAs), attendance rates, graduation rates, college and career readiness (ACT, SAT, WorkKeys), and participation in testing (SBAs and WorkKeys). Schools with students in both grade spans of K-8 and 9-12 have scores weighted relative to the proportion of students in each grade span.

Below is a summary of ASPI results for the Fairbanks North Star Borough School District schools:

- 1, 2, 8, 19, and 5 schools received ratings of 1, 2, 3, 4, and 5 stars, respectively.
- 98% of district students were enrolled in 3-5 star rated schools.
- 69% of schools received 4-5 star ratings.
- District schools averaged 85.3 points, which would be a 4-star rating.

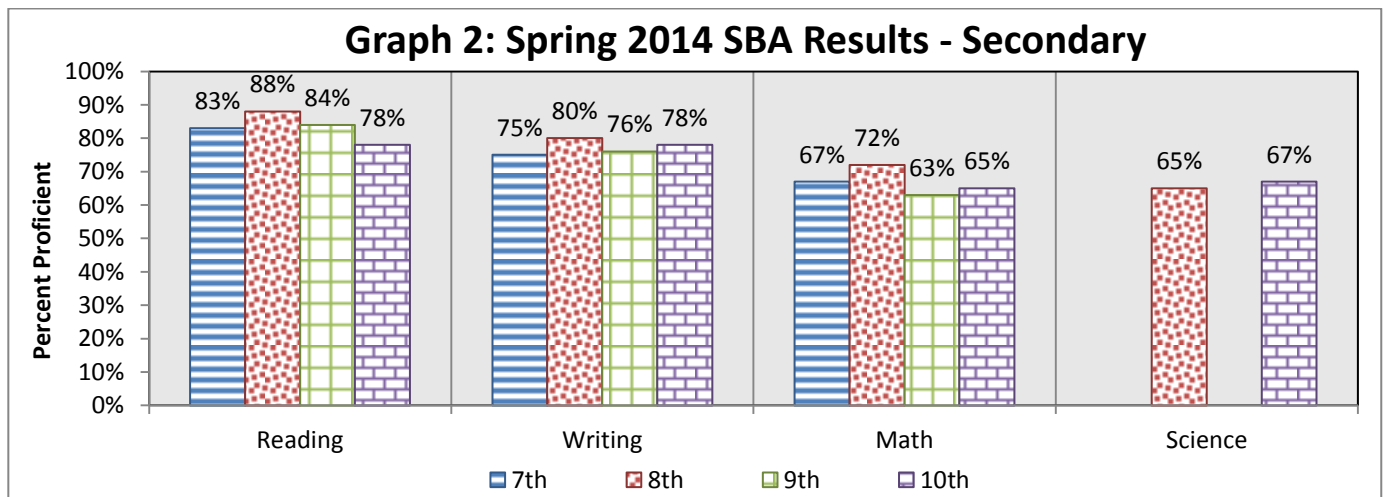
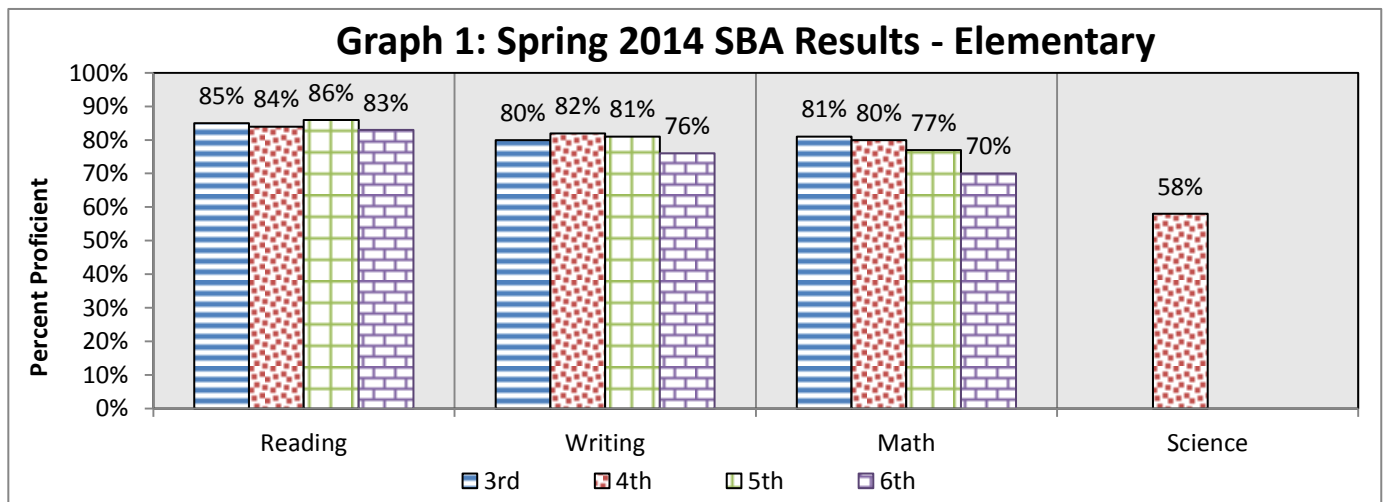
## ALASKA STANDARDS BASED ASSESSMENT RESULTS

Spring 2014 SBA results for all students (grades 3-10):

- 84%, 78%, and 72% of students Proficient in Reading, Writing, and Math, respectively.
- 63% of students Proficient in Science (grades 4, 8, and 10).

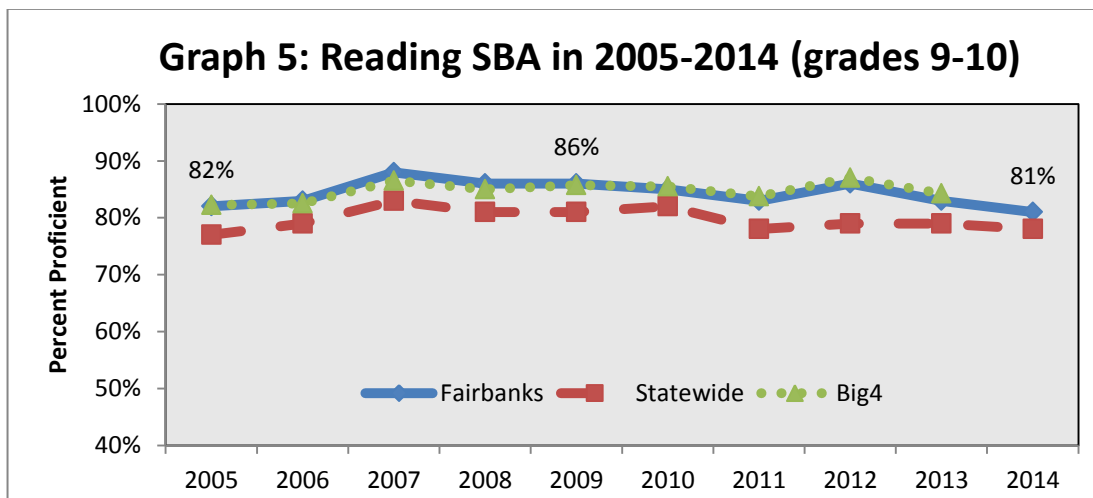
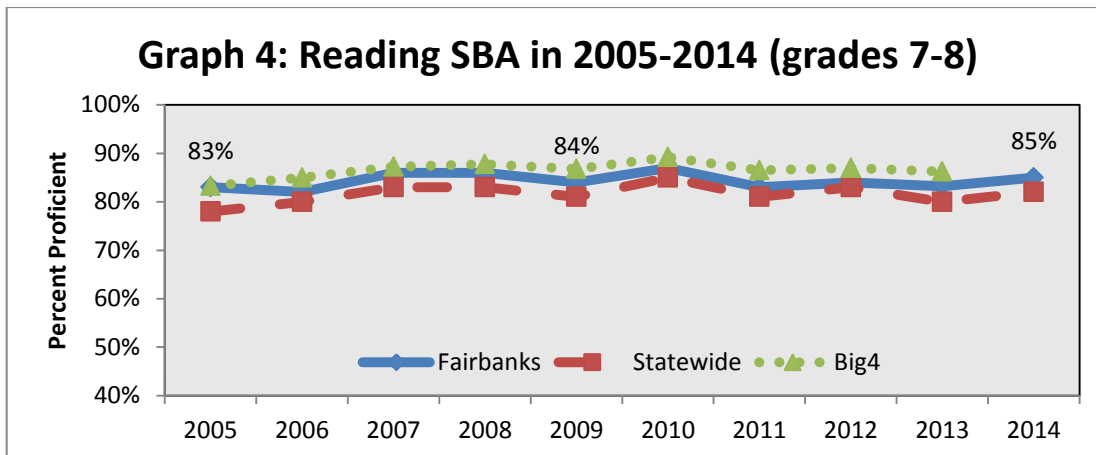
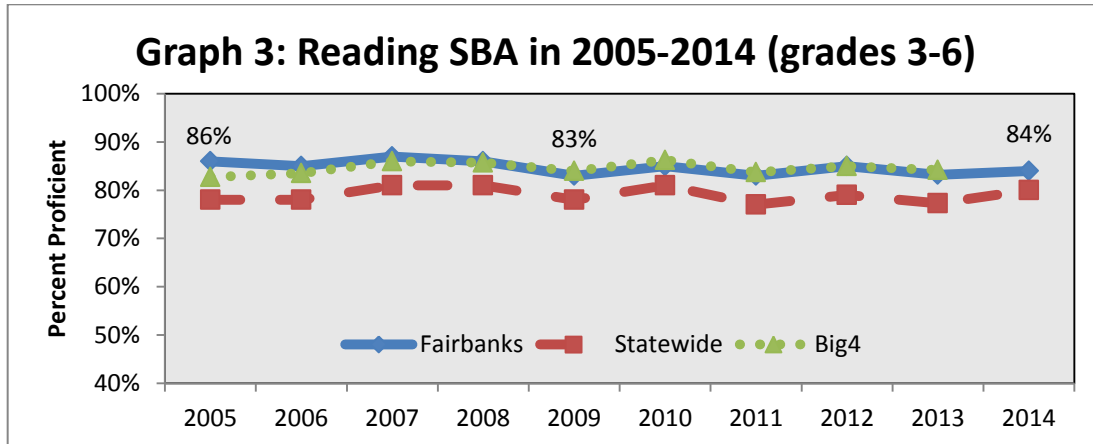
### 2014 PROFICIENCY RATES BY GRADE LEVEL

The bar graphs that follow provide a summary of the percent of students Proficient by grade level.

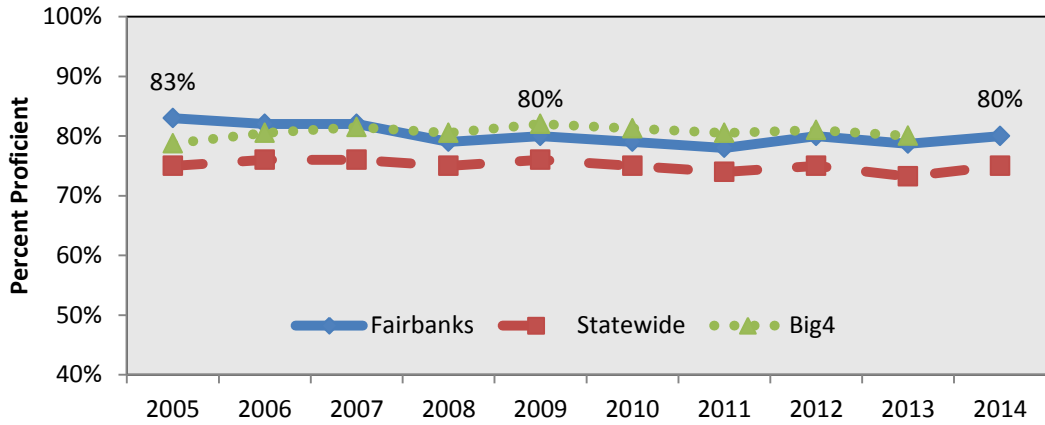


## COMPARISON OF RESULTS FROM 2005 TO 2014

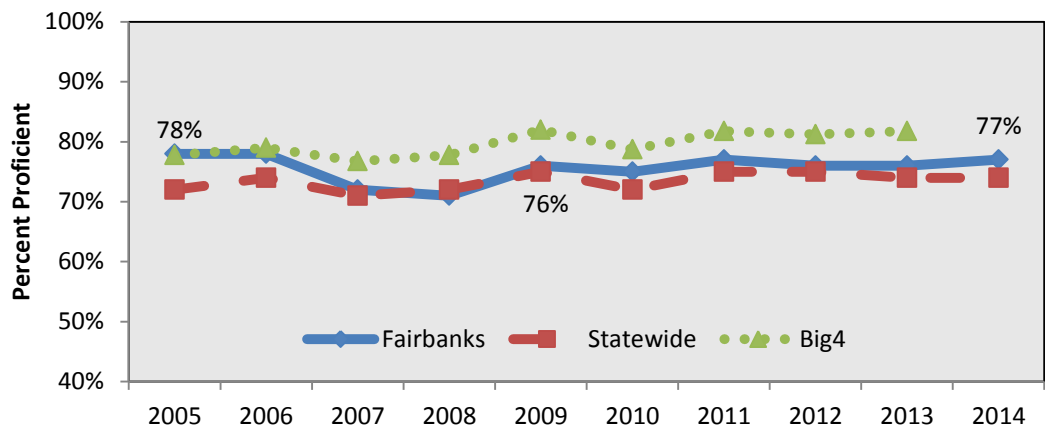
Graphs 3-14 provide proficiency rates by each grade span (Elementary, Middle, and High School) from 2005 to 2014 for all four subject areas: Reading, Writing, Math, and Science. Statewide and “Big 4” (Anchorage, Juneau, Kenai, Mat-Su) results are also included.



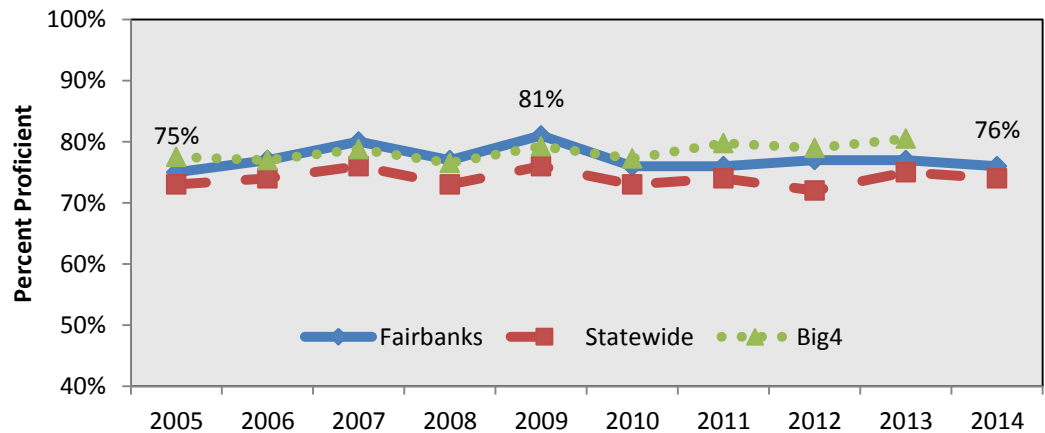
**Graph 6: Writing SBA in 2005-2014 (grades 3-6)**



**Graph 7: Writing SBA in 2005-2014 (grades 7-8)**

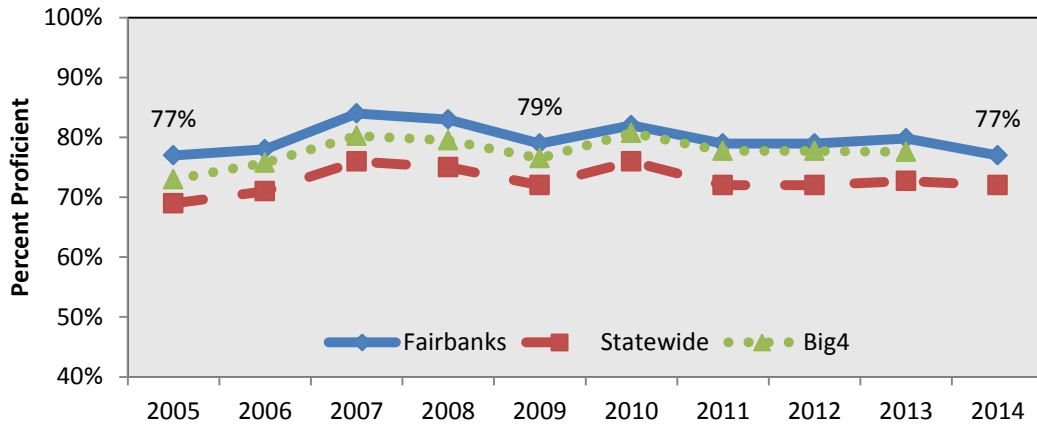


**Graph 8: Writing SBA in 2005-2014 (grades 9-10)**

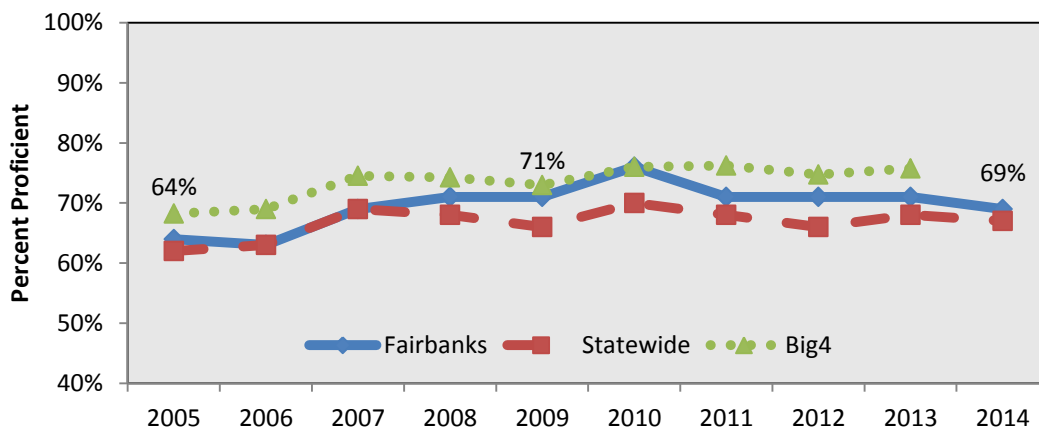




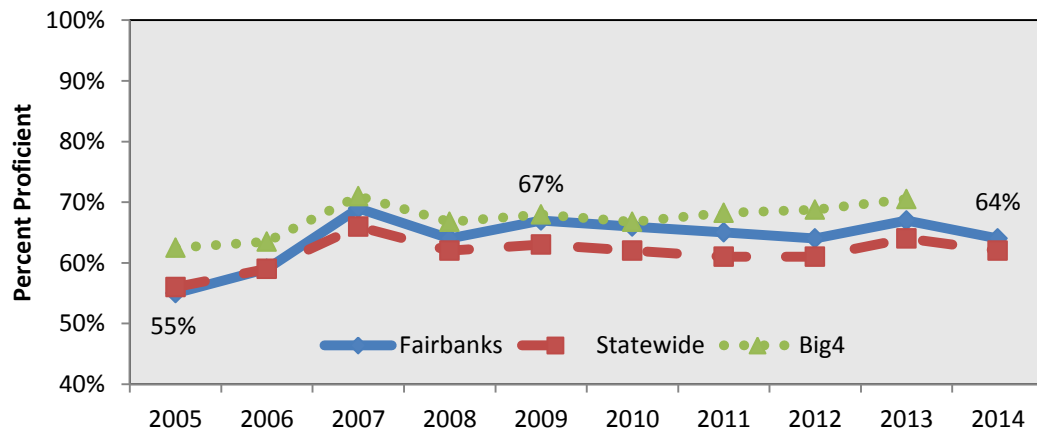
**Graph 9: Math SBA in 2005-2014 (grades 3-6)**



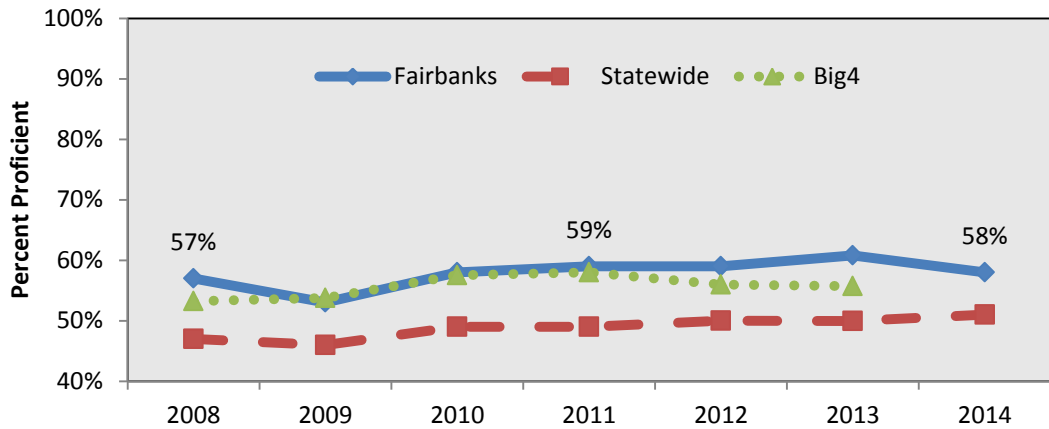
**Graph 10: Math SBA in 2005-2014 (grades 7-8)**



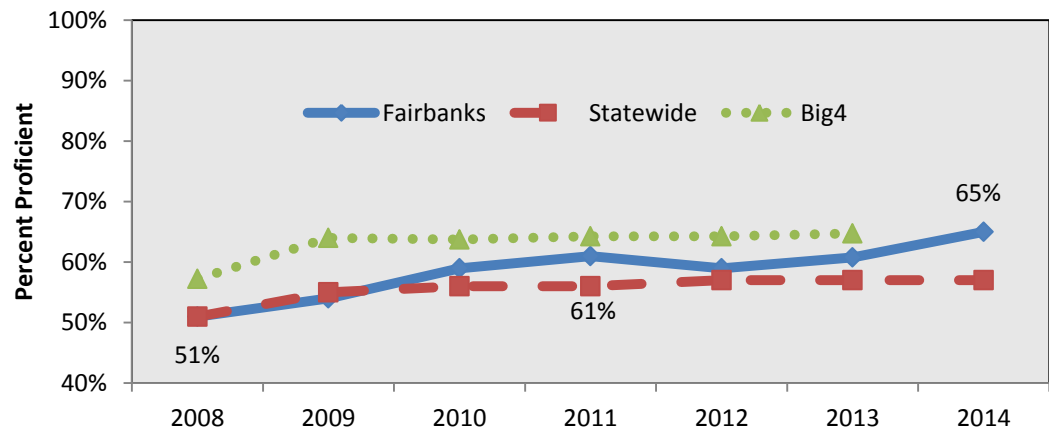
**Graph 11: Math SBA in 2005-2014 (grades 9-10)**



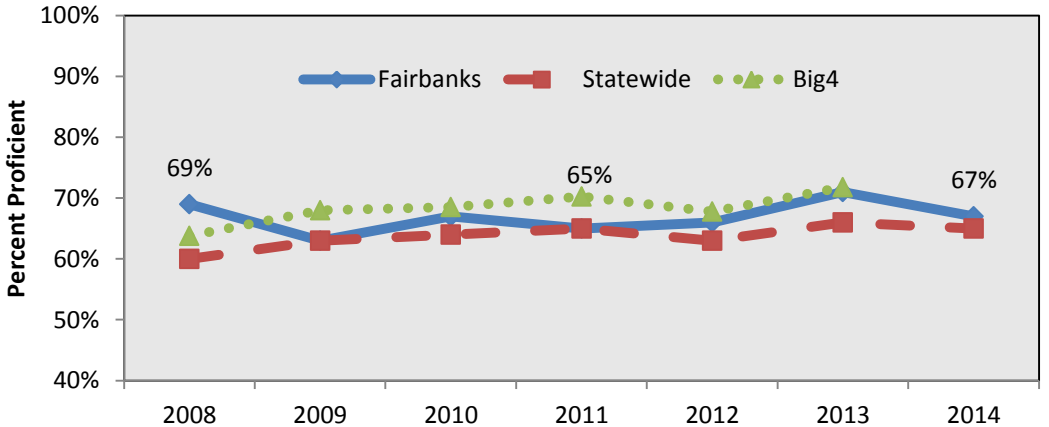
**Graph 12: Science SBA in 2008-2014 (grade 4)**



**Graph 13: Science SBA in 2008-2014 (grade 8)**



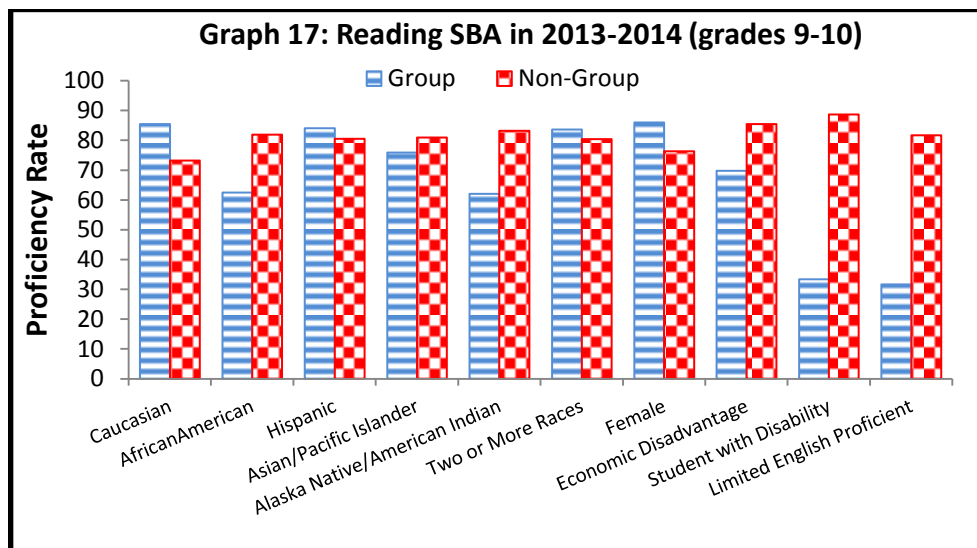
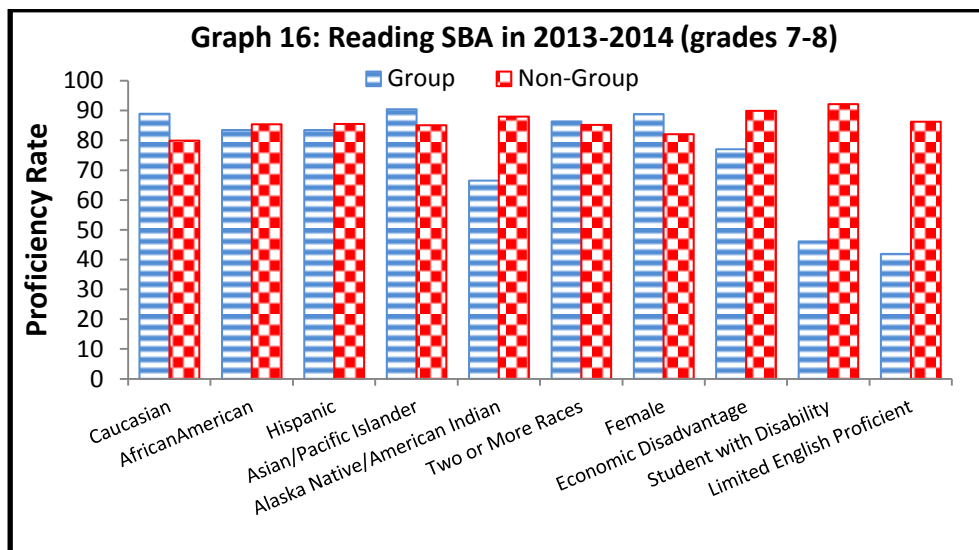
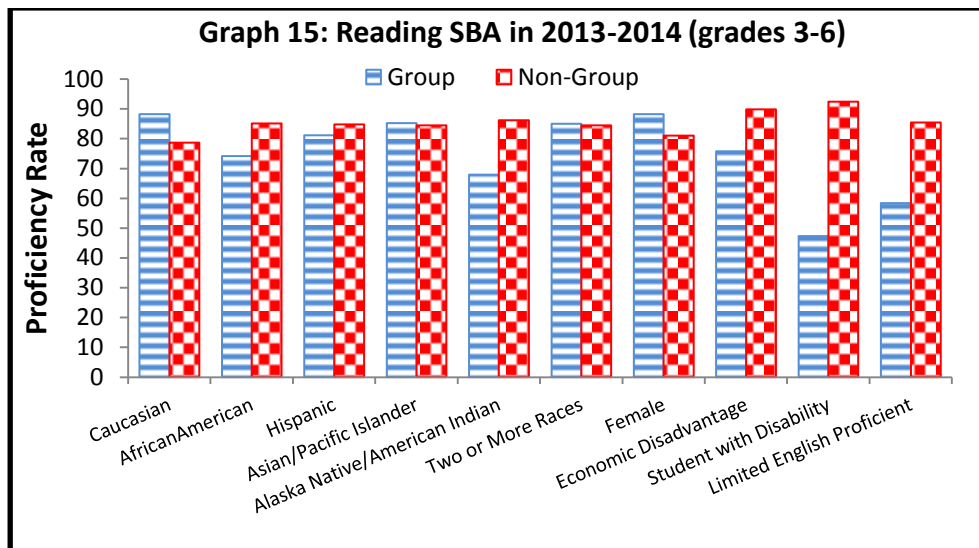
**Graph 14: Science SBA in 2008-2014 (grade 10)**

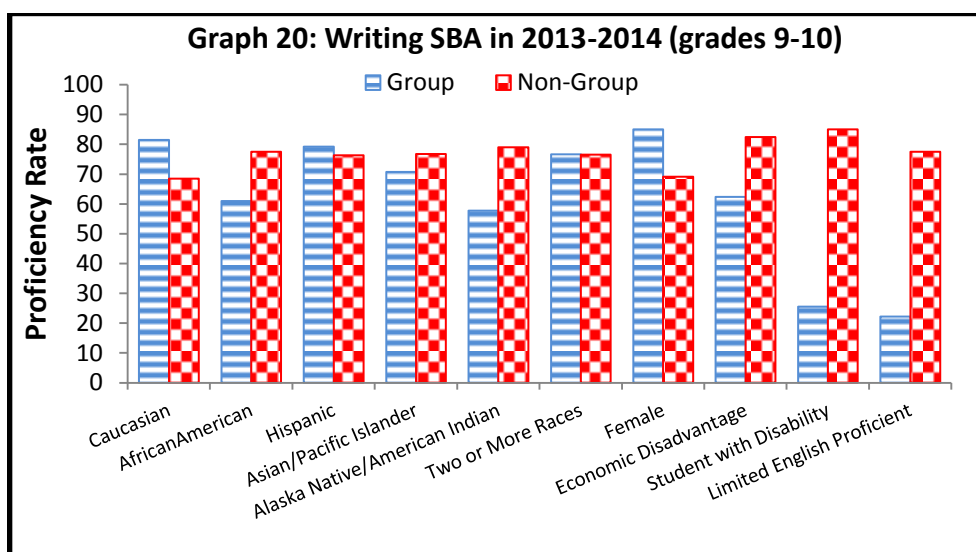
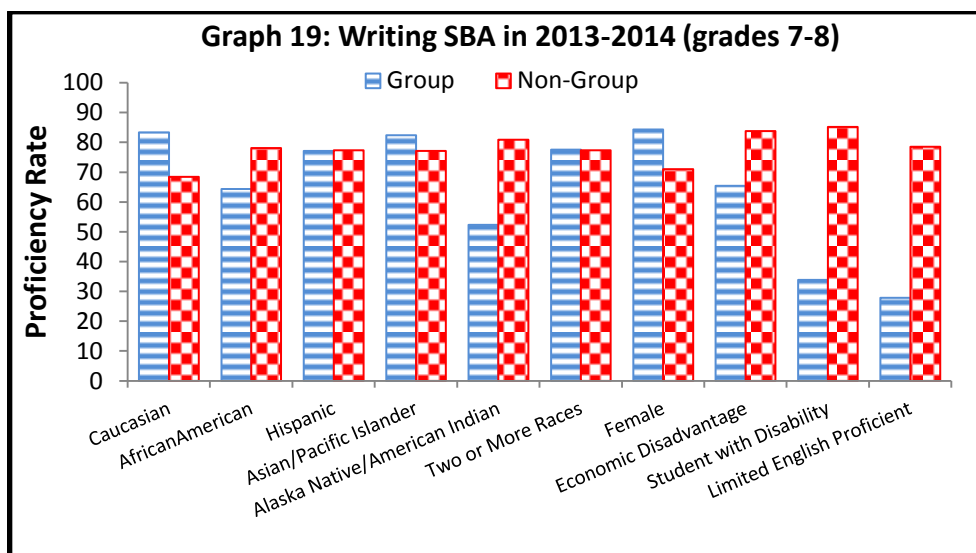
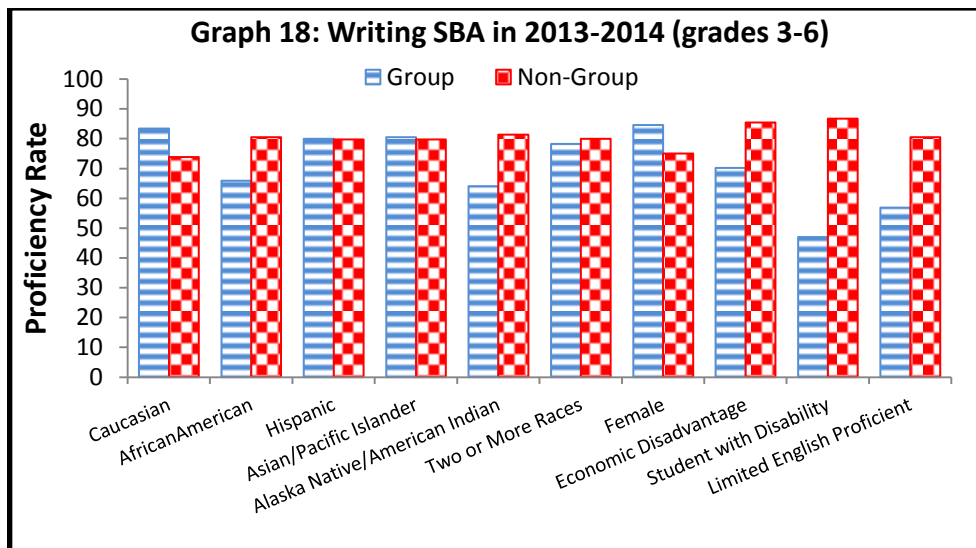


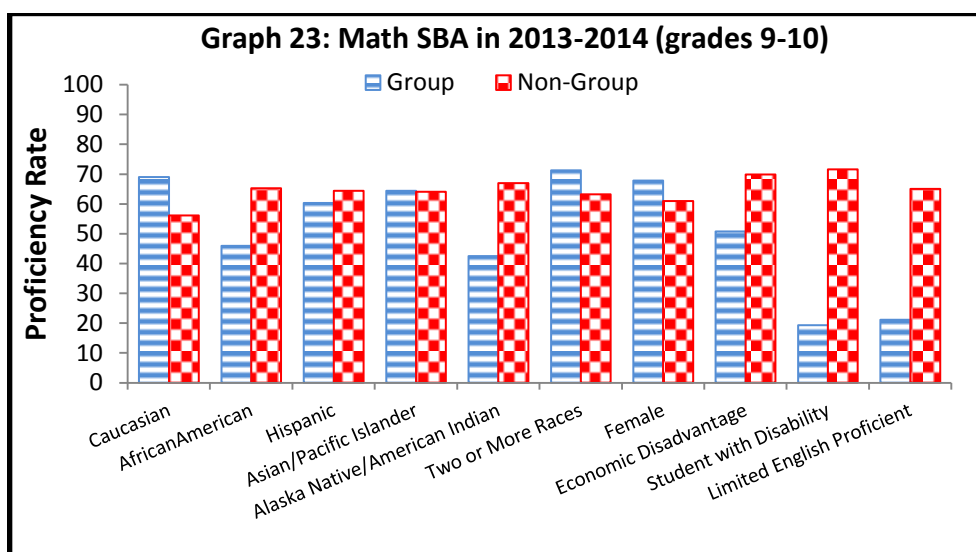
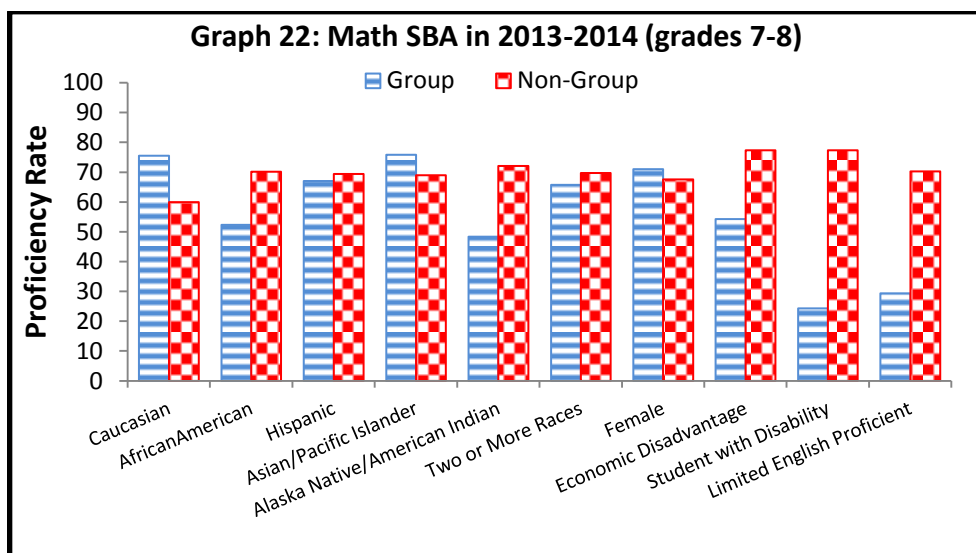
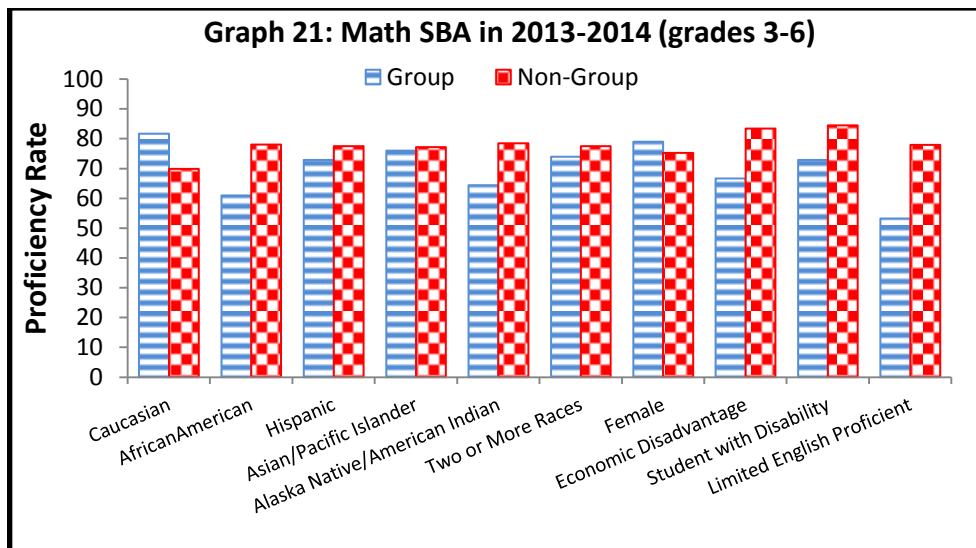
## **RESULTS BY DEMOGRAPHIC**

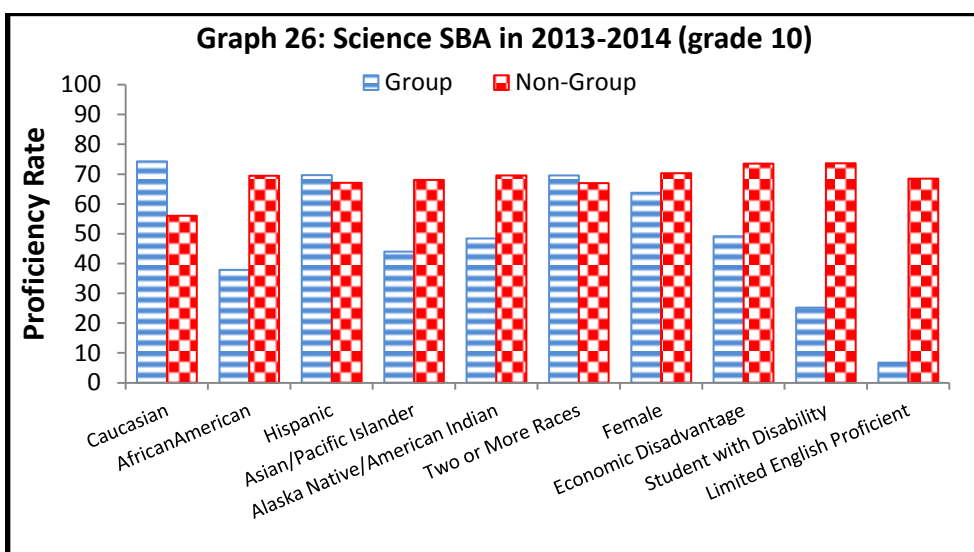
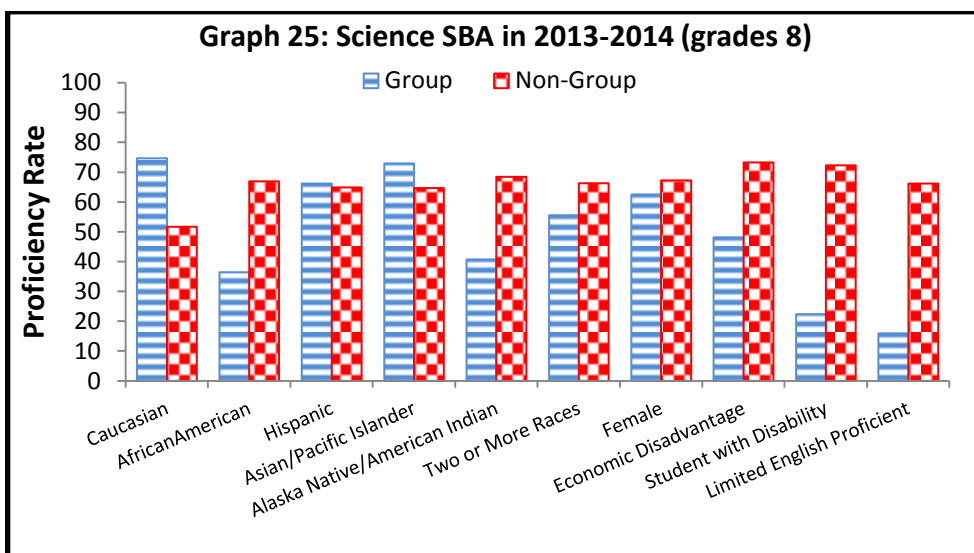
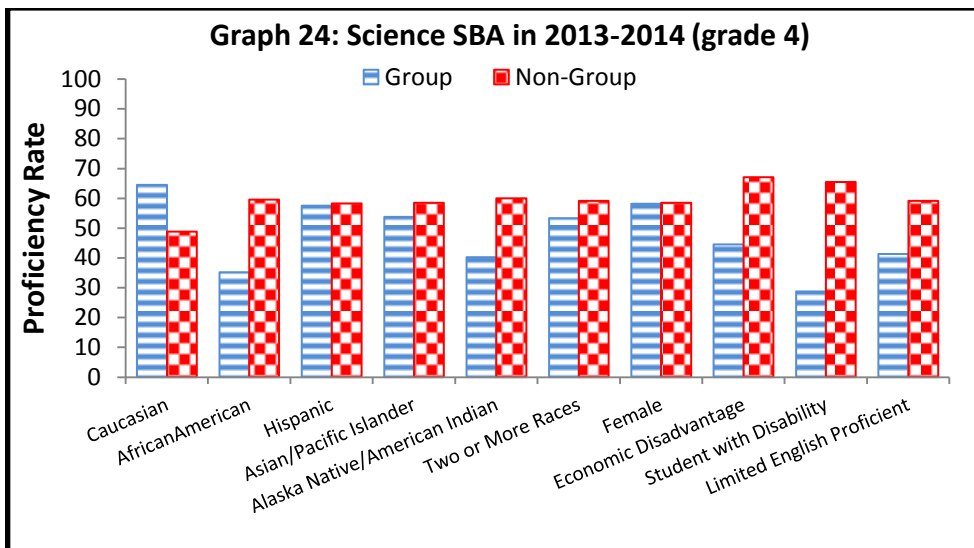
Graphs 15-26 provide Reading, Writing, Math, and Science 2013-2014 proficiency rates within each grade span (3-6, 7-8, and 9-10) by ethnicity, economic status, disability, English proficiency, and gender. In the graphs, the term “group” includes all students that belong to the reference group and “non-group” includes all students that do not belong to the reference group. For example, the “non-group” for females is males. The size of proficiency rate gaps can be described as fairly small, small, medium, or large (less than 5, 5-10, 10-20, and greater than 20 percentage points of difference, respectively):

- Fairly small proficiency rate gaps were prominent with the groups of Hispanic, Asian, Two or More Races, and Females (in Math and Science).
- Small proficiency rate gaps were shown with the groups of Females (in Reading and Writing), Caucasian, and African American.
- Medium proficiency rate gaps were shown with the groups of Economic Disadvantage and Alaska Native/American Indian.
- Large proficiency rate gaps were shown with the groups of Limited English Proficient and Students with Disabilities.









## **TERRANOVA ACHIEVEMENT TEST RESULTS**

Students in the 5<sup>th</sup> and 7<sup>th</sup> grades took the TerraNova tests in February of 2013 and received scores in Reading, Language, Math, Social Studies, Science, and Spelling. The scores are used to compare the skill levels of district students with students across the nation.

### **2014 AVERAGE NCE SCORES BY GRADE LEVEL**

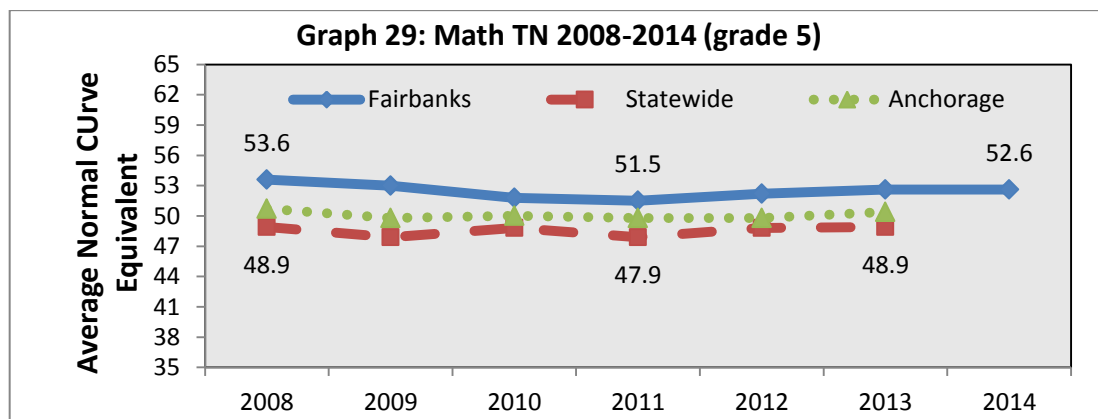
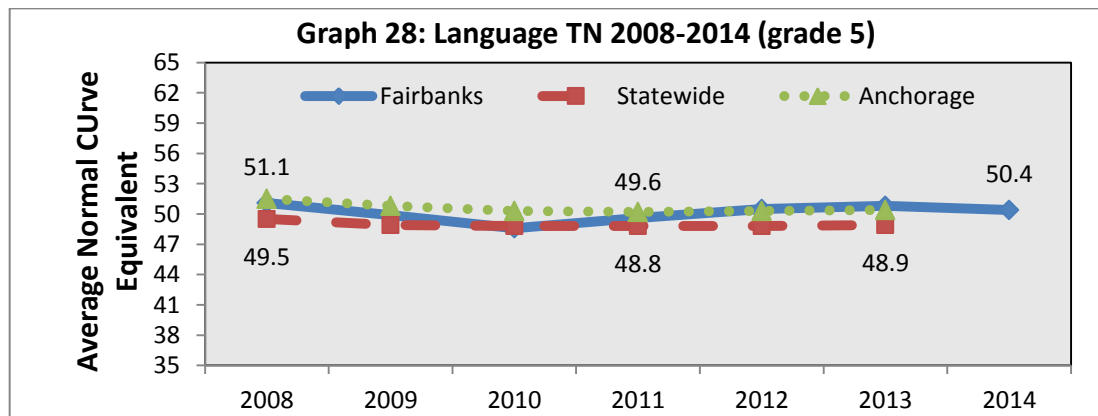
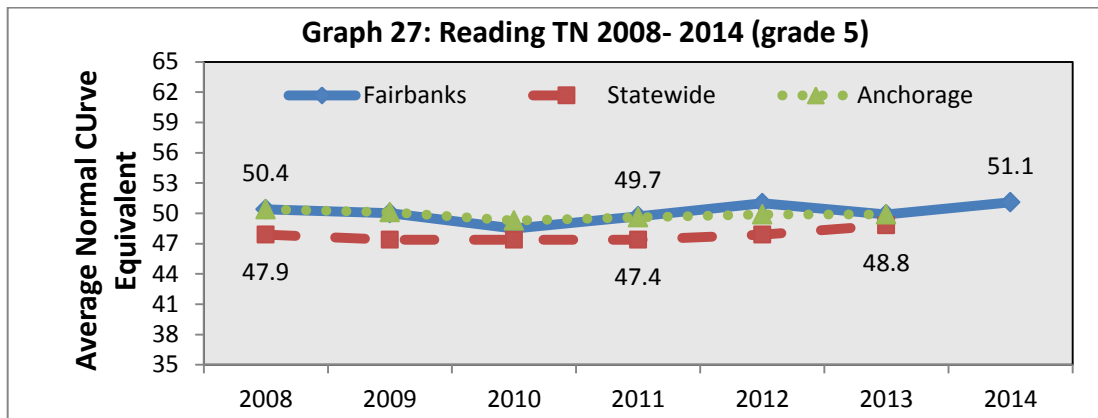
Results shown in Table 1 below are reported in terms of Normal Curve Equivalent (NCE) values. With few exceptions, district students scored at or higher than the national average (NCE above 50) in every subtest and grade.

<b>Table 1: TerraNova February 2014</b>		
<b>Fairbanks North Star Borough School District Students: 5<sup>th</sup> &amp; 7<sup>th</sup> Grade</b>		<b>Average NCE</b>
<b>Subtest:</b>	<b>GRADE</b>	
	<b>5</b>	<b>7</b>
Reading	51	56
Vocabulary	54	52
Reading Composite	53	55
Language	50	55
Language Mechanics	48	53
Language Composite	49	54
Mathematics	53	55
Math Computation	54	55
Math Composite	54	56
Science	52	53
Social Studies	49	53
Spelling	50	50

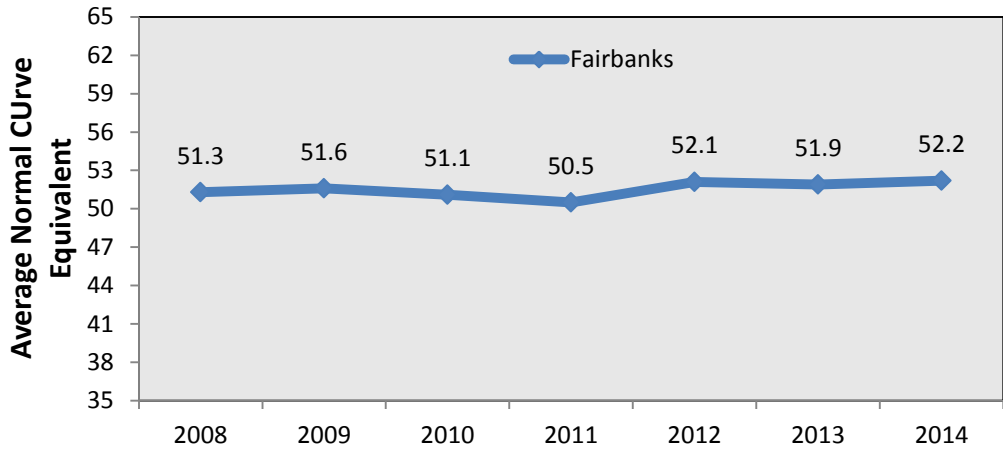


## COMPARISON OF SCORES FROM 2005 TO 2014

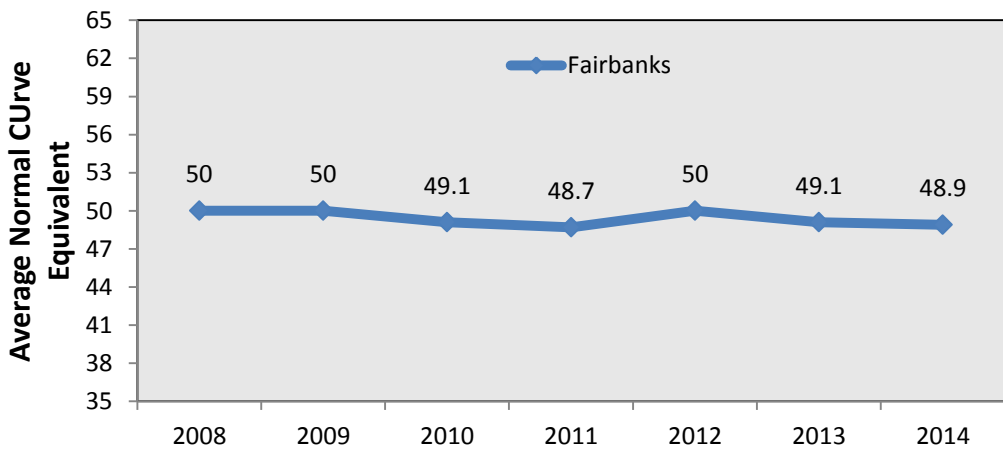
Graphs 27-38 provide TerraNova results from 2005 to 2014 for grades 5 & 7 in Reading, Language, and Mathematics, Science, Social Studies, and Spelling. Statewide and Anchorage results are only available for the subjects of Reading, Language, and Mathematics.



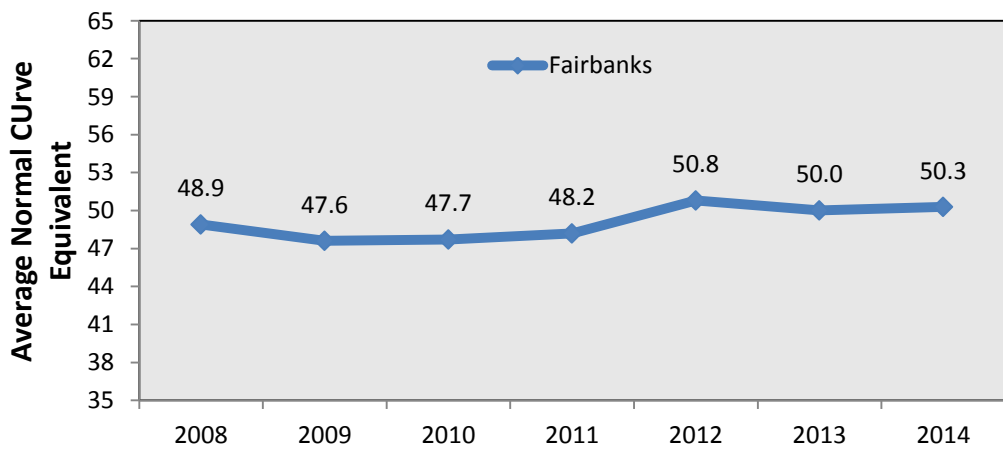
**Graph 30: Science TN 2008-2014 (grade 5)**



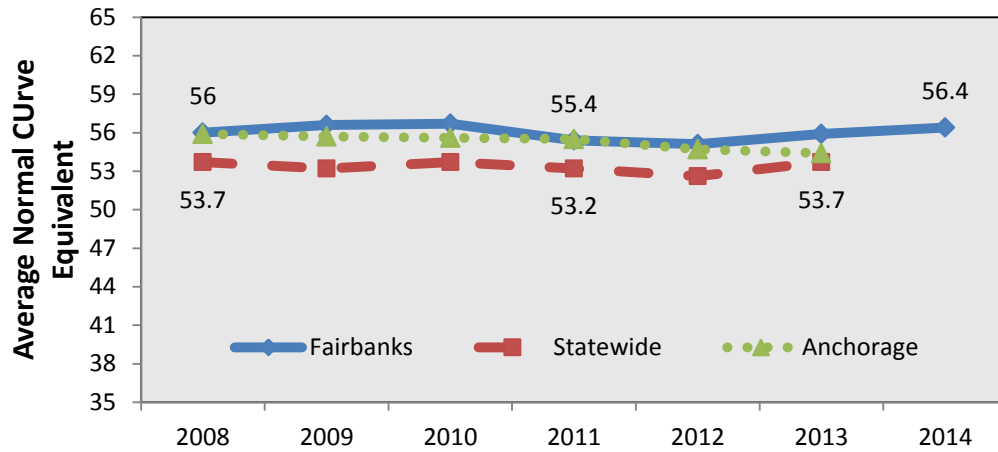
**Graph 31: Social Studies TN 2008-2014 (grade 5)**



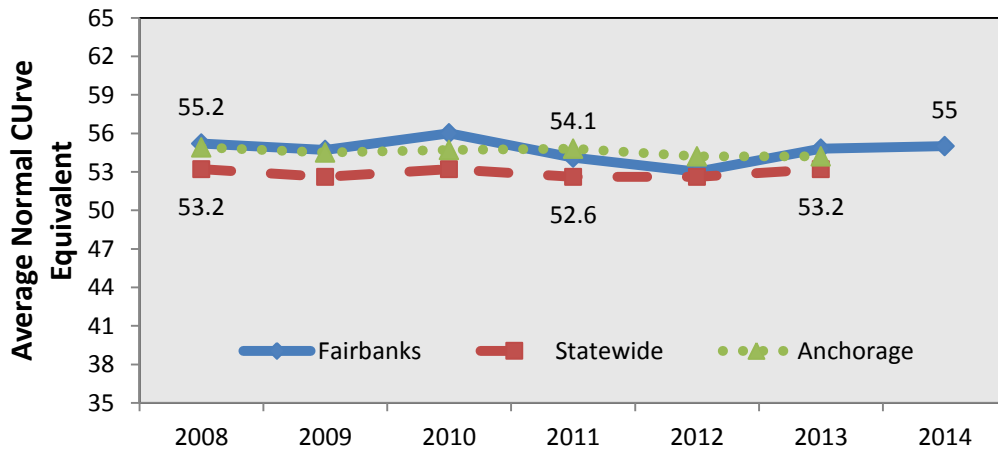
**Graph 32: Spelling TN 2008-2014 (grade 5)**



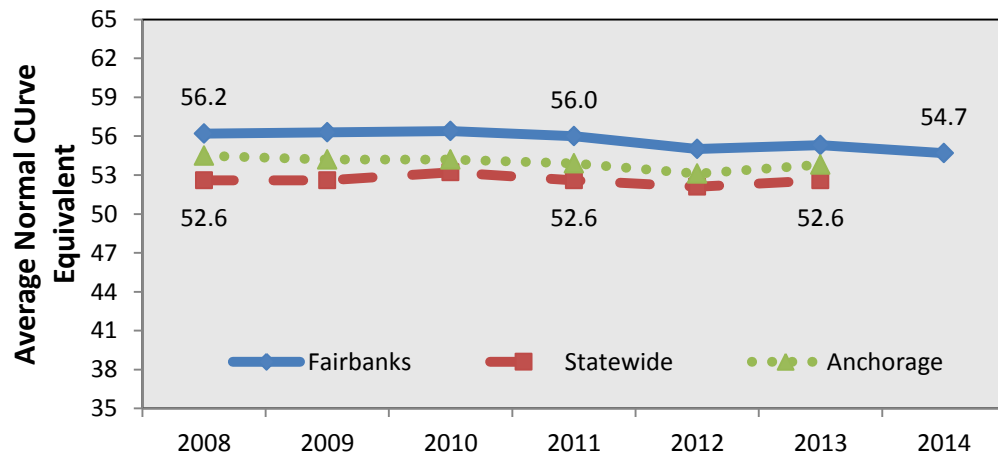
**Graph 33: Reading TN 2008-2014 (grade 7)**



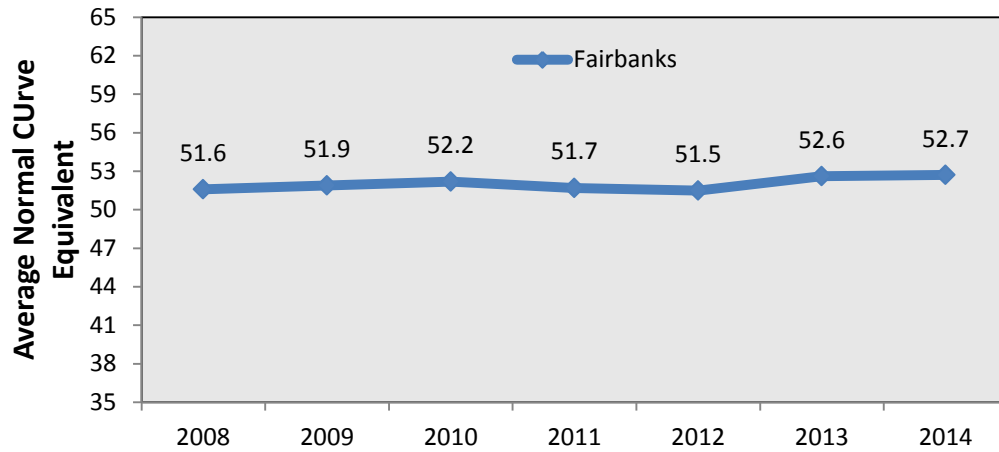
**Graph 34: Language TN 2008-2014 (grade 7)**



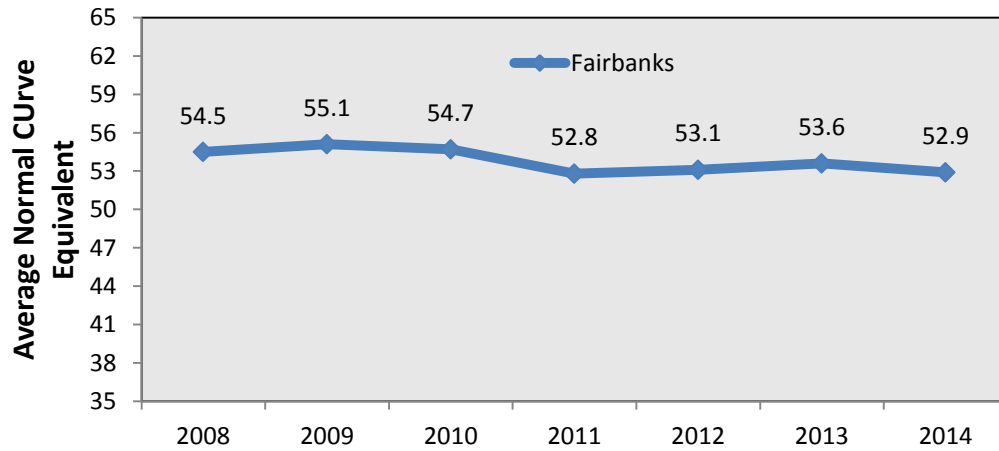
**Graph 35: Math TN 2008-2014 (grade 7)**



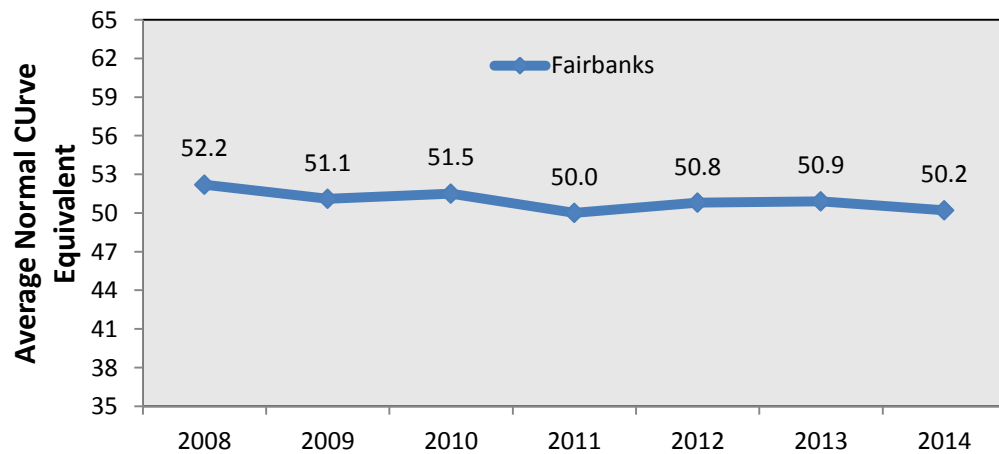
**Graph 36: Science TN 2008-2014 (grade 7)**



**Grah 37: Social Studies TN 2008-2014 (grade 7)**



**Graph 38: Spelling TN 2008-2014 (grade 7)**



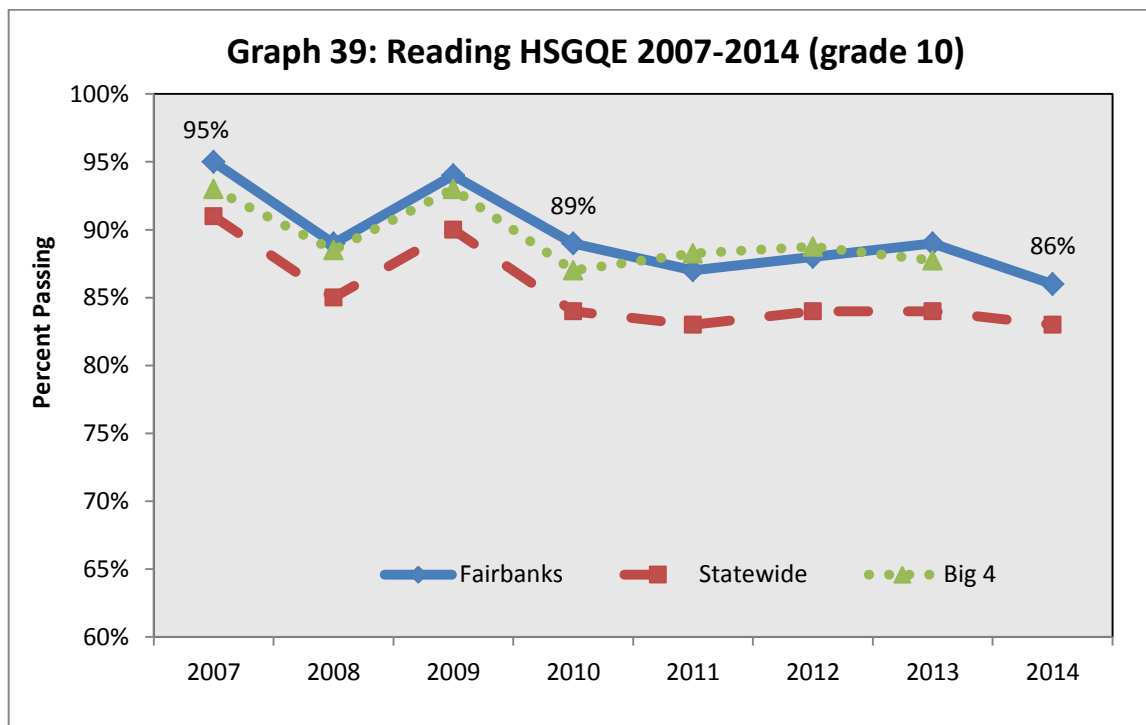
## **HIGH SCHOOL GRADUATION QUALIFYING EXAM RESULTS**

Table 2 indicates the rate of passing the Spring 2014 HSGQE for grades 10-12 in Reading, Writing, and Math.

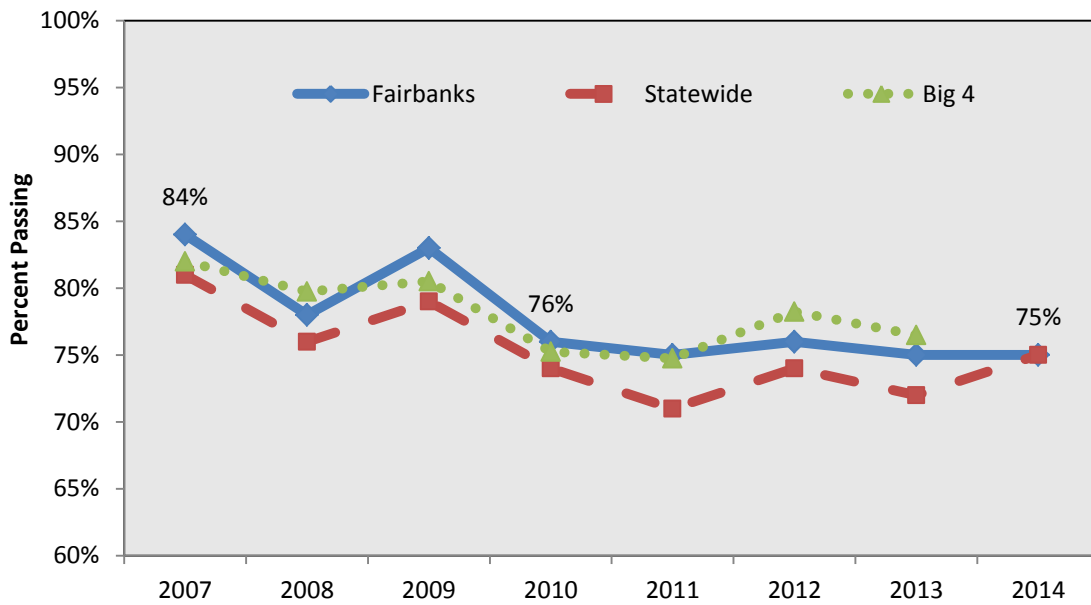
<b>Table 2: Spring 2014 HSGQE Pass Rates</b>						
	<b>Reading</b>		<b>Writing</b>		<b>Math</b>	
	<b># Tested</b>	<b>% Passing</b>	<b># Tested</b>	<b>% Passing</b>	<b># Tested</b>	<b>% Passing</b>
<b>10<sup>th</sup></b>	912	86%	912	75%	906	76%
<b>RETEST</b>						
<b>11<sup>th</sup></b>	71	63%	101	54%	110	44%
<b>12<sup>th</sup></b>	21	71%	34	47%	40	63%

### **COMPARISON OF RESULTS FROM 2007 TO 2014**

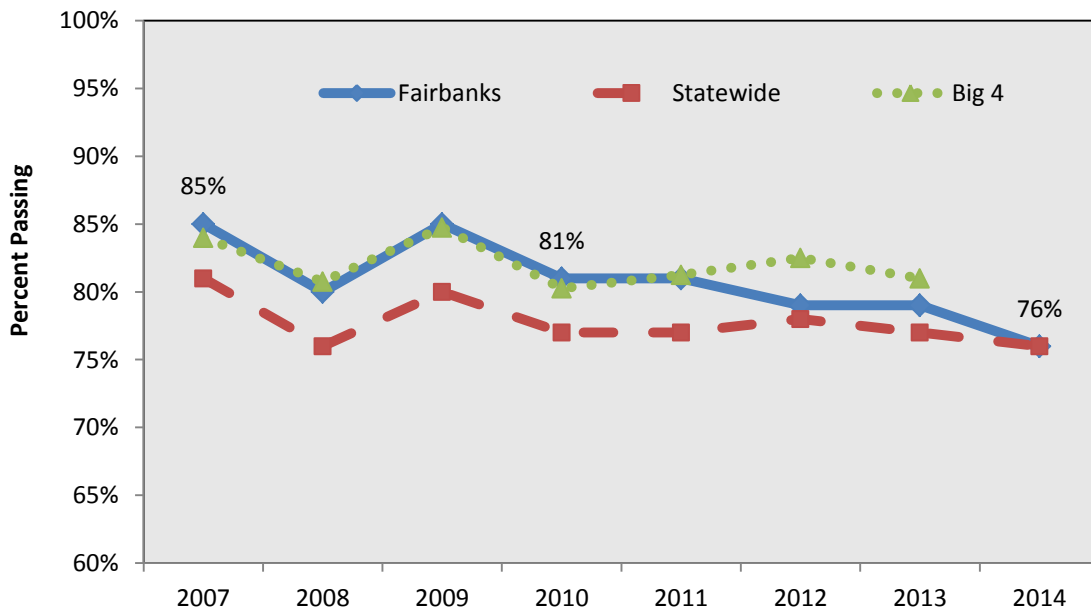
Graphs 39-41 indicate the HSGQE Pass Rate (grade 10) for the district versus the state and “Big Four” (Anchorage, Juneau, Kenai, and Mat-Su) in Reading, Writing, and Math from 2006-07 to 2013-14.



**Graph 40: Writing HSGQE 2007-2014 (grade 10)**

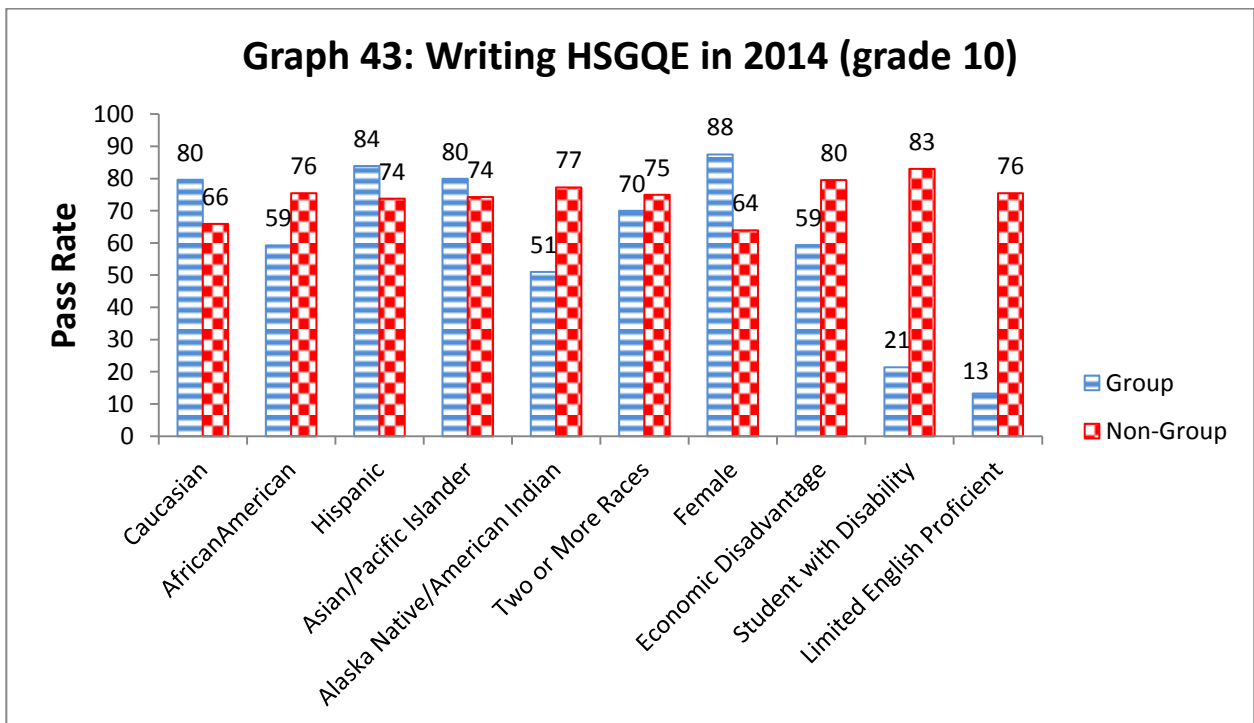
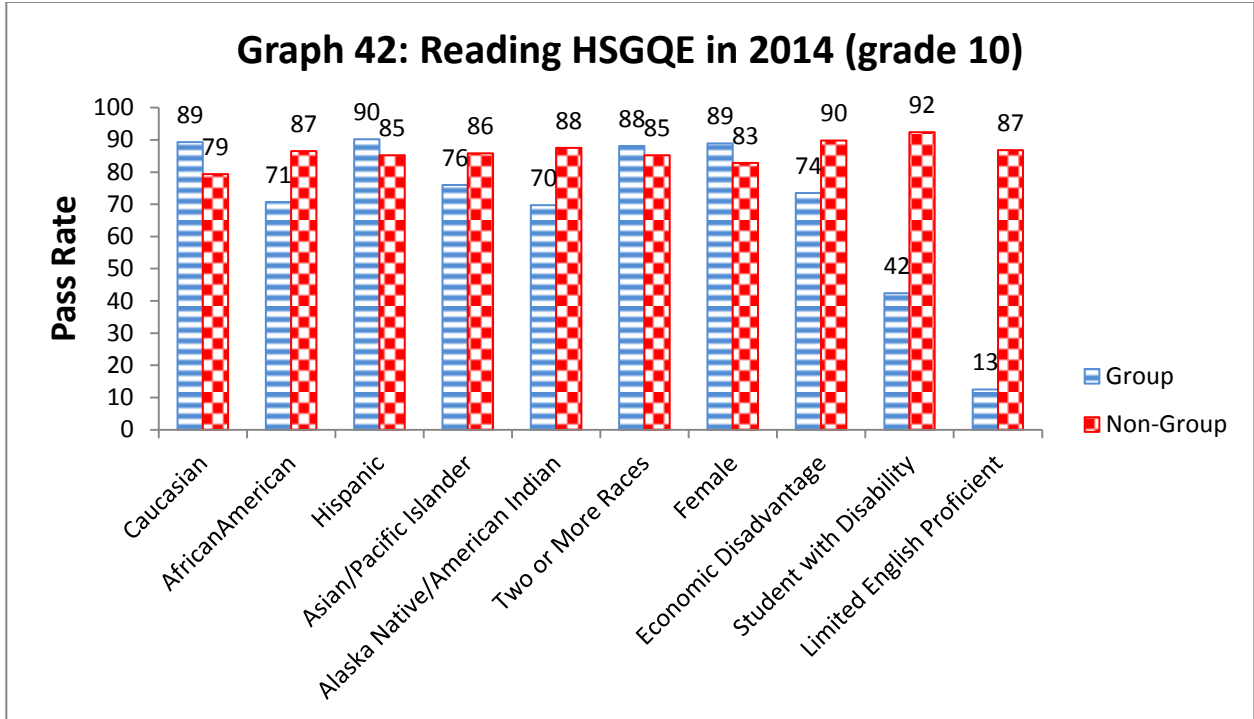


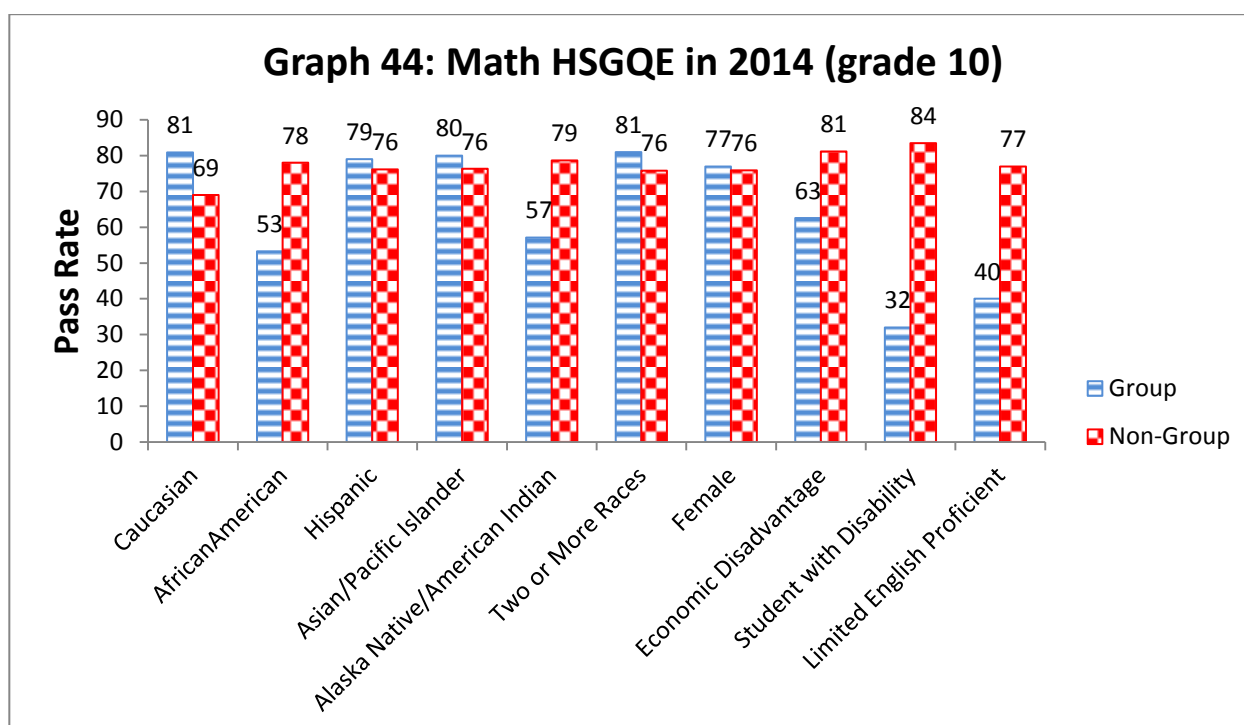
**Graph 41: Math HSGQE 2007-2014 (grade 10)**



## **RESULTS BY DEMOGRAPHIC**

Graphs 42-44 display the Spring 2014 HSGQE 10<sup>th</sup> grade pass rates in Reading, Writing, and Math by ethnicity, gender, economic status, disability, and English proficiency.





## **WORKKEYS RESULTS**

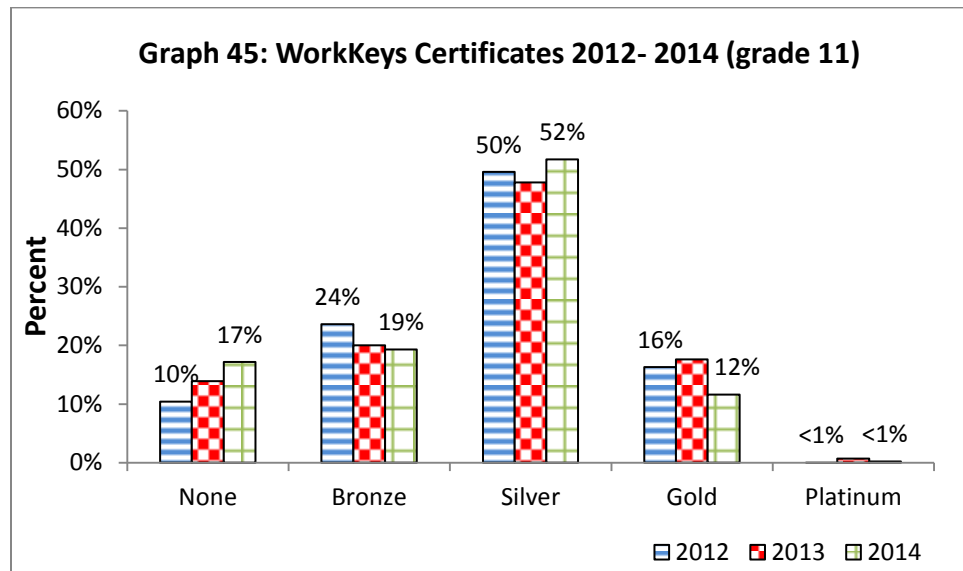
Table 3 indicates the Fall 2013 WorkKeys scores for grade 11 in Reading for Information (RfI), Locating Information (LI), and Applied Math (AM). All three tests yielding scores of at least 3, 4, 5, and 6, lead to a bronze, silver, gold, and platinum certificate, respectively. Scoring a "3" in one of the subtests, or acquiring a bronze certificate will be referred to as "passing."

<b>Table 3: Fall 2013 WorkKeys Rates in Each Level</b>							
	<b># Tested</b>	<b>% Less Than 3</b>	<b>% "3"</b>	<b>% "4"</b>	<b>% "5"</b>	<b>% "6-7"</b>	<b>% 3 or Higher</b>
<b>Reading for Information</b>	851	2.8%	3.4%	31.7%	41.1%	20.9%	97.2%
<b>Locating Information</b>	853	6.2%	16.1%	64.2%	13.2%	0.2%	93.8%
<b>Applied Math</b>	844	7.7%	13.0%	23.7%	29.4%	26.2%	92.3%
	<b># Tested</b>	<b>% None</b>	<b>% Bronze</b>	<b>% Silver</b>	<b>% Gold</b>	<b>% Platinum</b>	<b>% Bronze or Better</b>
<b>Total Result</b>	874	17.2%	19.3%	51.7%	11.6%	0.2%	82.8%



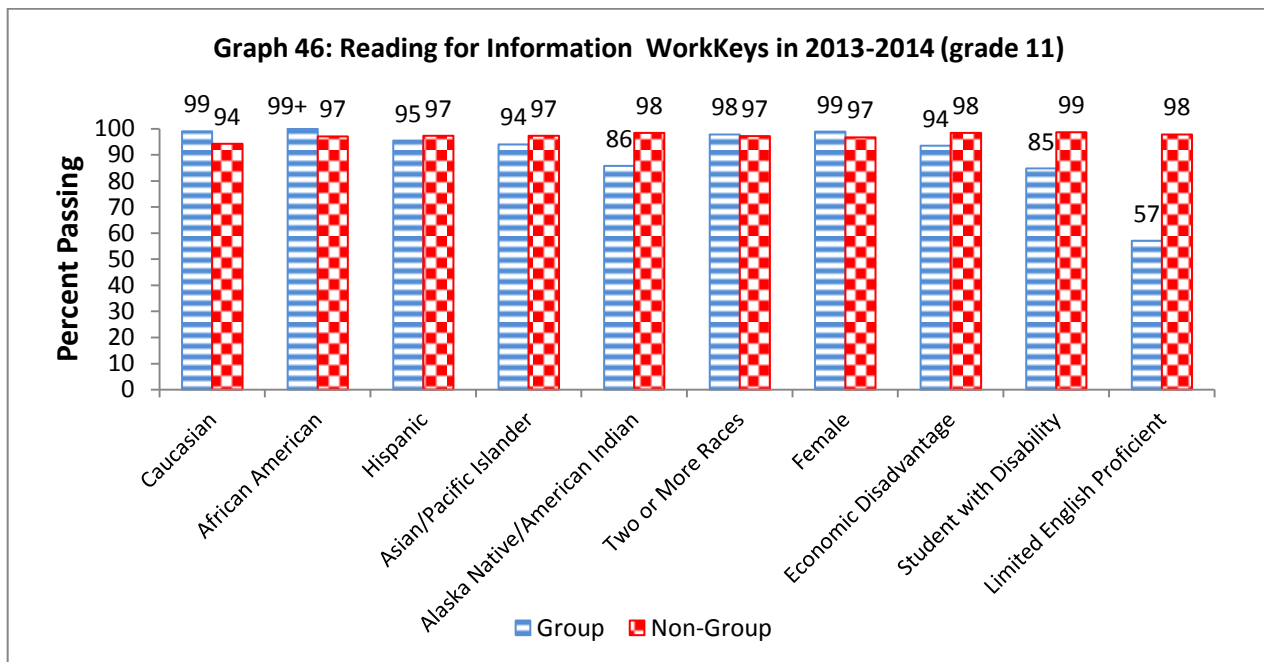
## COMPARISON OF RESULTS FROM 2012 TO 2014

Graph 45 indicates the certificate rates (grade 11) for the district from 2011-12 to 2013-14.

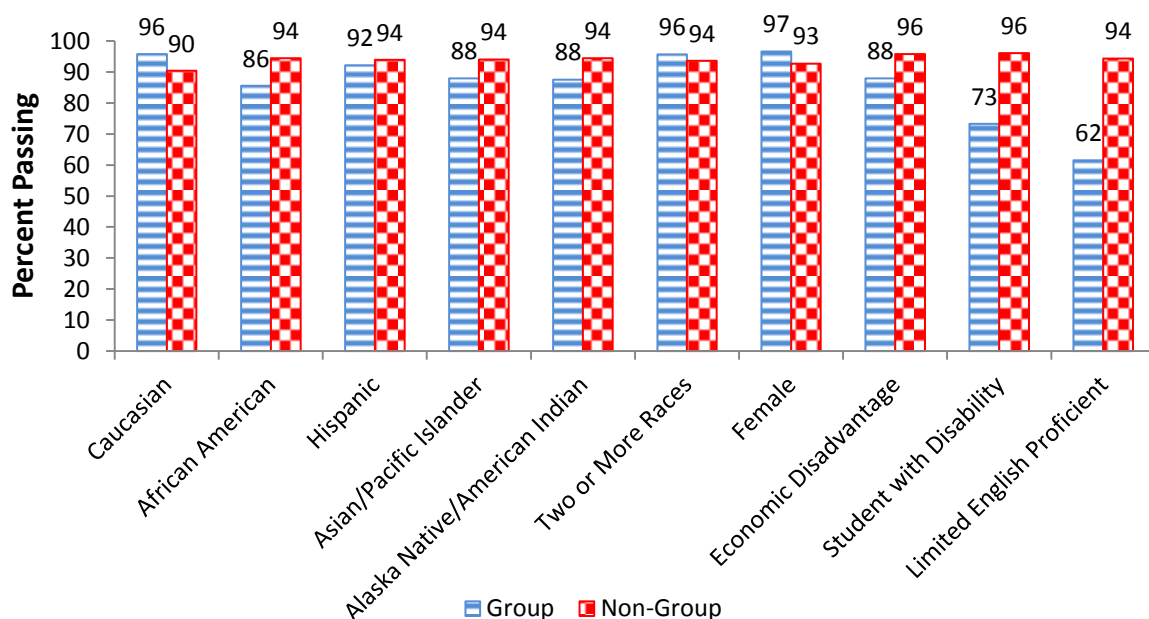


## RESULTS BY DEMOGRAPHIC

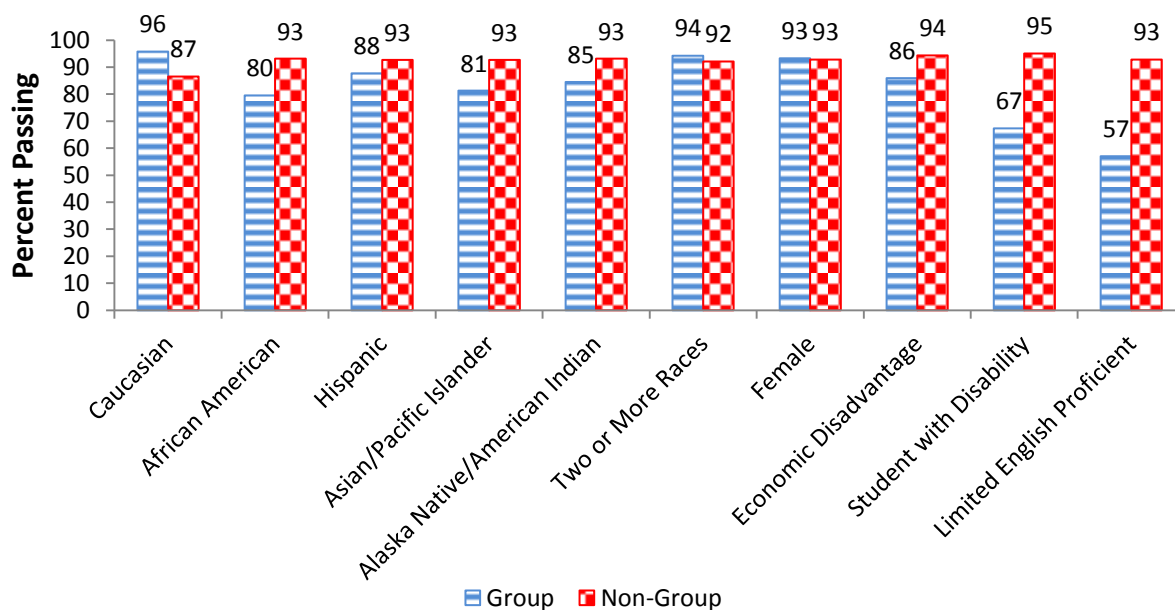
Graphs 46-49 indicate the 2013-2014 WorkKeys pass rate for grade 11 in Reading for Information, Locating Information, Applied Math, and Total Result by ethnicity, gender, economic status, disability, and English proficiency.



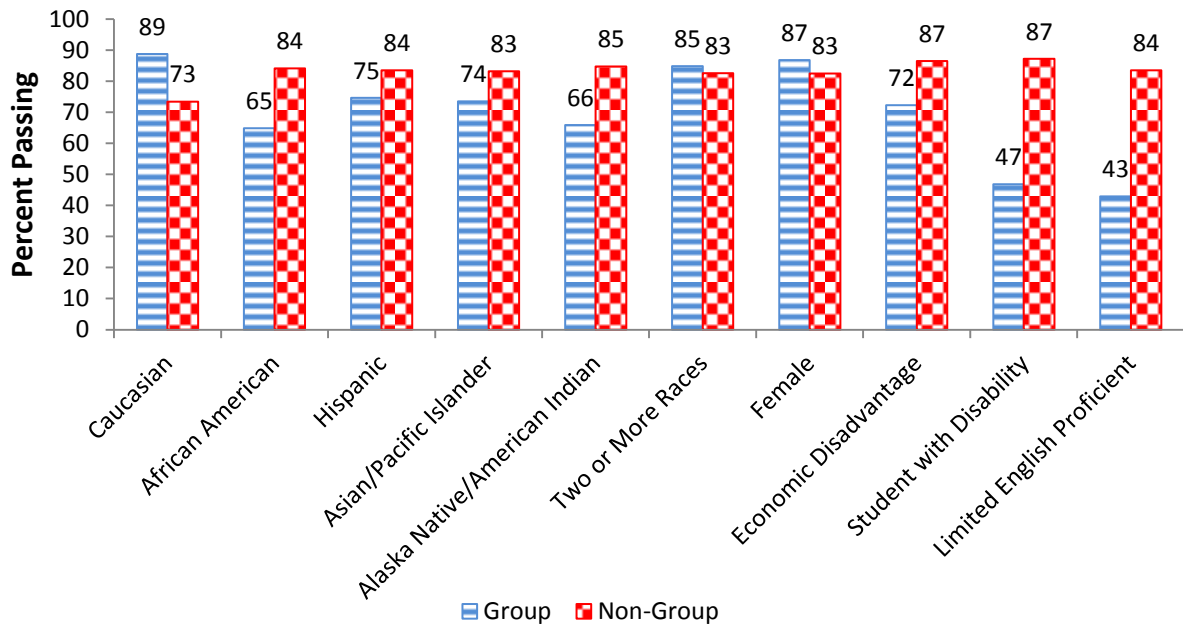
**Graph 47: Locating Information WorkKeys in 2013-2014 (grade 11)**



**Graph 48: Applied Math WorkKeys in 2013-2014 (grade 11)**



**Graph 49: Total Result WorkKeys in 2013-2014 (grade 11)**



## **CONCLUSION**

To summarize the findings of this report, consider the following questions:

### **1. How does the district perform relative to State targets?**

Using the Alaska School Performance Index, district schools averaged 85.3 points, which would be equivalent to a 4-star rating. 69% of schools received a 4 or 5 star rating.

### **2. How does the district perform relative to the state, nation, and “Big Four” (Anchorage, Juneau, Kenai, Mat-Su)?**

For most assessments, district students outperform state students, and are competitive with “Big Four” and national students. On the SBAs, district results are better than for the state in every subject (Reading, Writing, Math, and Science), and similar to the “Big Four” results with the exception of Middle School (grades 7-8) where the district shows lower scores. For the TerraNova and HSGQE, district results are better than the state and similar to the “Big Four” results (and competitive with the nation for the TerraNova).

### **3. How does the district perform over time?**

For the SBAs, most trends were statistically significant, positive, and “fairly small” in size, with the exception of Middle School Reading, Math, and Science (“small” positive trend). For the TerraNova, there were no statistically significant trends, with the exception of three “small” trends: 7<sup>th</sup> grade Math and Social Studies (negative) and 5<sup>th</sup> grade spelling (positive).

#### **4. How does the district perform relative to achievement gaps?**

Achievement gaps vary by ethnicity, gender, economic status, disability, and English proficiency across the SBAs, HSGQE, and WorkKeys. A general trend for achievement gaps amongst the assessments was shown for the groups:

- Fairly Small achievement gaps with the groups of Hispanic, Asian, Two or More Races, and Females (in Math and Science).
- Small achievement gaps were shown with the groups of Females (in Reading and Writing), Caucasian, and African American.
- Medium achievement gaps were shown with the groups of Economic Disadvantage and Alaska Native/American Indian.
- Large achievement gaps were shown with the groups of Students with Disabilities and Limited English Proficient.

In summary, the district consistently performs well versus the state, is competitive with the “Big Four” and nation, and most schools acquired a 4 or 5 star rating. Statistically significant linear trends tend to be fairly small and positive. Achievement gaps range from “fairly small” to “large” in size, but tend to be smaller in this district than in the state.

**Appendix:**

**Alaska Standards Based Assessment**

**Data Tables**

**2013-14 School Year**

- Data table retrieved from Alaska Department of Education and Early Development.
- Data may be suppressed to protect individual confidentiality.
- Data include mean scale scores and proficiency rates on the SBAs for students in each grade level by gender, ethnicity, economic status, disability, English proficiency, and migrant status in the Fairbanks North Star Borough School District and the state of Alaska.



Alaska Student Assessments  
Standards Based Assessment  
Summary Report - Grade 3

Group	Year	Reading			Writing			Mathematics		
		Number Tested	Mean Scale Score	% Advanced/ Proficient	Number Tested	Mean Scale Score	% Advanced/ Proficient	Number Tested	Mean Scale Score	% Advanced/ Proficient
State	2014	9586	378	81.5	9614	364	76.7	9607	361	75.2
Female	2014	4694	386	84.1	4706	377	80.9	4699	361	75.3
Male	2014	4892	370	79.0	4908	351	72.7	4908	361	75.1
African American	2014	313	360	77.3	315	346	69.5	316	334	63.3
Alaska Native/Am. Indian	2014	2236	329	61.6	2242	315	54.1	2235	314	54.0
Asian/Pacific Islander	2014	824	369	84.1	825	366	80.0	831	352	72.4
Caucasian	2014	4666	402	89.3	4680	387	85.7	4673	387	85.5
Hispanic	2014	660	377	85.8	663	368	83.0	666	358	77.8
Two or More Races	2014	887	386	86.5	889	370	80.8	886	363	79.1
Low Income	2014	4857	352	73.1	4872	340	67.7	4872	334	65.3
Not Low Income	2014	4729	404	90.1	4742	389	86.0	4735	388	85.4
Students with Disabilities	2014	1427	320	54.3	1436	314	54.4	1434	314	54.3
Students without Disabilities	2014	8159	388	86.3	8178	373	80.6	8173	369	78.9
LEP students	2014	1560	319	58.0	1566	312	53.8	1570	303	48.0
Not LEP students	2014	8026	389	86.1	8048	374	81.2	8037	372	80.5
Migrant students	2014	761	354	71.7	760	342	67.9	758	342	68.1
Not Migrant students	2014	8825	380	82.4	8854	366	77.5	8849	362	75.7
Fairbanks North Star Borough Schools (16)	2014	1053	384	85.1	1053	369	80.2	1050	372	81.1
Female	2014	530	390	88.9	531	380	83.8	530	373	82.1
Male	2014	523	378	81.3	522	358	76.4	520	372	80.2
African American	2014	50	348	74.0	50	328	62.0	50	324	62.0
Alaska Native/Am. Indian	2014	102	349	77.5	102	335	66.7	102	340	72.5
Asian/Pacific Islander	2014	36	368	77.8	36	363	72.2	35	366	71.4
Caucasian	2014	642	396	87.9	642	381	84.4	640	386	86.4
Hispanic	2014	90	371	83.3	90	360	80.0	90	359	78.9
Two or More Races	2014	133	380	85.0	133	363	78.9	133	358	73.7
Low Income	2014	397	357	77.1	397	342	71.8	395	345	71.6
Not Low Income	2014	656	401	89.9	656	386	85.2	655	389	86.9
Students with Disabilities	2014	188	319	53.2	188	310	49.5	186	319	54.8
Students without Disabilities	2014	865	398	92.0	865	382	86.8	864	384	86.8
LEP students	2014	47	319	59.6	47	317	46.8	47	318	48.9
Not LEP students	2014	1006	387	86.3	1006	372	81.7	1003	375	82.7
Migrant students	2014	30	353	70.0	30	346	66.7	30	359	83.3
Not Migrant students	2014	1023	385	85.5	1023	370	80.5	1020	373	81.1

Alaska Student Assessments  
Standards Based Assessment  
Summary Report - Grade 4

Group	Year	Reading				Writing				Mathematics				Science			
		Number Tested	Mean Scale Score	Advanced/ Proficient		Number Tested	Mean Scale Score	Advanced/ Proficient		Number Tested	Mean Scale Score	Advanced/ Proficient		Number Tested	Mean Scale Score	Advanced/ Proficient	
				N	%			N	%			N	%			N	%
State	2014	9485	374	7425	78.3	9476	371	7287	76.9	9463	355	7024	74.2	9216	300	4681	50.8
Female	2014	4677	384	3806	81.4	4668	388	3840	82.3	4657	357	3567	76.6	4544	300	2299	50.6
Male	2014	4808	364	3619	75.3	4808	353	3447	71.7	4806	354	3457	71.9	4672	300	2382	51.0
African American	2014	316	351	232	73.4	316	351	226	71.5	319	331	206	64.6	313	279	112	35.8
Alaska Native/Am. Indian	2014	2130	320	1156	54.3	2134	312	1127	52.8	2129	313	1166	54.8	2083	255	516	24.8
Asian/Pacific Islander	2014	809	358	614	75.9	807	367	634	78.6	808	350	608	75.2	790	280	269	34.1
Caucasian	2014	4699	402	4170	88.7	4695	398	4068	86.6	4681	377	3881	82.9	4550	325	3018	66.3
Hispanic	2014	609	370	492	80.8	607	372	488	80.4	608	349	445	73.2	595	296	284	47.7
Two or More Races	2014	922	380	761	82.5	917	377	744	81.1	918	360	718	78.2	885	307	482	54.5
Low Income	2014	4772	344	3215	67.4	4763	340	3159	66.3	4772	329	3055	64.0	4684	275	1623	34.6
Not Low Income	2014	4713	405	4210	89.3	4713	401	4128	87.6	4691	382	3969	84.6	4532	327	3058	67.5
Students with Disabilities	2014	1527	311	759	49.7	1532	309	806	52.6	1534	300	732	47.7	1495	264	389	26.0
Students without Disabilities	2014	7958	386	6666	83.8	7944	382	6481	81.6	7929	366	6292	79.4	7721	307	4292	55.6
LEP students	2014	1342	293	547	40.8	1339	293	589	44.0	1343	293	621	46.2	1321	234	146	11.1
Not LEP students	2014	8143	387	6878	84.5	8137	383	6698	82.3	8120	366	6403	78.9	7895	311	4535	57.4
Migrant students	2014	740	342	487	65.8	739	336	474	64.1	739	335	486	65.8	735	273	260	35.4
Not Migrant students	2014	8745	377	6938	79.3	8737	373	6813	78.0	8724	357	6538	74.9	8481	303	4421	52.1
Fairbanks North Star Borough Schools (16)	2014	1071	384	901	84.1	1068	379	873	81.7	1067	367	851	79.8	1039	313	606	58.3
Female	2014	522	392	458	87.7	520	396	455	87.5	521	371	427	82.0	507	314	295	58.2
Male	2014	549	376	443	80.7	548	362	418	76.3	546	364	424	77.7	532	313	311	58.5
African American	2014	54	345	41	75.9	54	343	39	72.2	54	331	33	61.1	54	281	19	35.2
Alaska Native/Am. Indian	2014	96	337	61	63.5	96	336	66	68.8	96	337	67	69.8	93	280	38	40.9
Asian/Pacific Islander	2014	41	375	34	82.9	41	373	34	82.9	42	365	34	81.0	41	300	22	53.7
Caucasian	2014	646	397	566	87.6	643	391	543	84.4	642	378	530	82.6	627	325	405	64.6
Hispanic	2014	75	382	66	88.0	75	376	65	86.7	75	362	61	81.3	73	305	42	57.5
Two or More Races	2014	159	376	133	83.6	159	369	126	79.2	158	356	126	79.7	151	305	80	53.0
Low Income	2014	417	358	320	76.7	415	351	304	73.3	417	342	294	70.5	404	289	179	44.3
Not Low Income	2014	654	401	581	88.8	653	397	569	87.1	650	383	557	85.7	635	329	427	67.2
Students with Disabilities	2014	229	322	128	55.9	229	319	132	57.6	229	314	122	53.3	224	271	70	31.3
Students without Disabilities	2014	842	401	773	91.8	839	395	741	88.3	838	382	729	87.0	815	325	536	65.8
LEP students	2014	43	339	30	69.8	43	349	33	76.7	44	333	29	65.9	44	280	18	40.9
Not LEP students	2014	1028	386	871	84.7	1025	380	840	82.0	1023	369	822	80.4	995	315	588	59.1
Migrant students	2014	27	348	18	66.7	27	348	20	74.1	26	340	18	69.2	26	282	11	42.3
Not Migrant students	2014	1044	385	883	84.6	1041	380	853	81.9	1041	368	833	80.0	1013	314	595	58.7



Alaska Student Assessments  
Standards Based Assessment  
Summary Report - Grade 5

Group	Year	Reading				Writing				Mathematics			
		Number Tested	Mean Scale Score	Advanced/ Proficient		Number Tested	Mean Scale Score	Advanced/ Proficient		Number Tested	Mean Scale Score	Advanced/ Proficient	
				N	%			N	%			N	%
State	2014	9277	374	7521	81.1	9262	366	7113	76.8	9285	349	6546	70.5
Female	2014	4491	383	3805	84.7	4481	383	3657	81.6	4486	351	3228	72.0
Male	2014	4786	365	3716	77.6	4781	351	3456	72.3	4799	346	3318	69.1
African American	2014	306	357	235	76.8	305	354	227	74.4	308	324	181	58.8
Alaska Native/Am. Indian	2014	2084	323	1190	57.1	2080	310	1093	52.5	2087	304	984	47.1
Asian/Pacific Islander	2014	841	365	684	81.3	842	369	669	79.5	842	351	622	73.9
Caucasian	2014	4671	399	4240	90.8	4656	391	4019	86.3	4664	371	3777	81.0
Hispanic	2014	582	378	494	84.9	586	372	480	81.9	587	344	413	70.4
Two or More Races	2014	793	377	678	85.5	793	366	625	78.8	797	347	569	71.4
Low Income	2014	4607	347	3286	71.3	4612	338	3060	66.3	4622	322	2728	59.0
Not Low Income	2014	4670	401	4235	90.7	4650	395	4053	87.2	4663	375	3818	81.9
Students with Disabilities	2014	1447	315	770	53.2	1446	306	744	51.5	1452	293	585	40.3
Students without Disabilities	2014	7830	385	6751	86.2	7816	378	6369	81.5	7833	359	5961	76.1
LEP students	2014	1031	287	384	37.2	1035	276	368	35.6	1044	276	325	31.1
Not LEP students	2014	8246	385	7137	86.6	8227	378	6745	82.0	8241	358	6221	75.5
Migrant students	2014	775	347	532	68.6	775	339	501	64.6	775	330	485	62.6
Not Migrant students	2014	8502	377	6989	82.2	8487	369	6612	77.9	8510	351	6061	71.2
Fairbanks North Star Borough Schools (16)	2014	1082	382	929	85.9	1078	375	873	81.0	1081	363	831	76.9
Female	2014	524	389	467	89.1	522	389	438	83.9	522	362	401	76.8
Male	2014	558	375	462	82.8	556	362	435	78.2	559	364	430	76.9
African American	2014	49	360	38	77.6	49	352	37	75.5	49	347	34	69.4
Alaska Native/Am. Indian	2014	98	342	70	71.4	98	339	68	69.4	98	333	62	63.3
Asian/Pacific Islander	2014	40	394	37	92.5	40	404	35	87.5	41	370	33	80.5
Caucasian	2014	677	391	602	88.9	673	383	564	83.8	673	372	549	81.6
Hispanic	2014	91	366	71	78.0	90	366	71	78.9	91	352	60	65.9
Two or More Races	2014	127	382	111	87.4	128	371	98	76.6	129	353	93	72.1
Low Income	2014	408	354	314	77.0	407	346	295	72.5	408	333	267	65.4
Not Low Income	2014	674	398	615	91.2	671	393	578	86.1	673	381	564	83.8
Students with Disabilities	2014	200	315	107	53.5	201	312	107	53.2	201	304	88	43.8
Students without Disabilities	2014	882	397	822	93.2	877	390	766	87.3	880	376	743	84.4
LEP students	2014	28	306	14	50.0	28	310	17	60.7	29	296	14	48.3
Not LEP students	2014	1054	384	915	86.8	1050	377	856	81.5	1052	365	817	77.7
Migrant students	2014	31	342	22	71.0	31	337	20	64.5	31	331	20	64.5
Not Migrant students	2014	1051	383	907	86.3	1047	376	853	81.5	1050	364	811	77.2

Alaska Student Assessments  
Standards Based Assessment  
Summary Report - Grade 6

Group	Year	Reading				Writing				Mathematics			
		Number Tested	Mean Scale Score	Advanced/ Proficient		Number Tested	Mean Scale Score	Advanced/ Proficient		Number Tested	Mean Scale Score	Advanced/ Proficient	
				N	%			N	%			N	%
State	2014	9212	362	7196	78.1	9201	350	6474	70.4	9214	345	6202	67.3
Female	2014	4494	373	3706	82.5	4484	368	3460	77.2	4496	346	3106	69.1
Male	2014	4718	353	3490	74.0	4717	333	3014	63.9	4718	344	3096	65.6
African American	2014	351	349	268	76.4	351	337	241	68.7	348	323	203	58.3
Alaska Native/Am. Indian	2014	2107	313	1113	52.8	2108	292	912	43.3	2116	302	977	46.2
Asian/Pacific Islander	2014	818	358	641	78.4	819	350	587	71.7	816	348	558	68.4
Caucasian	2014	4464	388	3992	89.4	4455	377	3646	81.8	4460	366	3458	77.5
Hispanic	2014	634	358	491	77.4	631	348	452	71.6	635	336	413	65.0
Two or More Races	2014	838	366	691	82.5	837	359	636	76.0	839	354	593	70.7
Low Income	2014	4590	334	3082	66.7	4590	317	2613	56.9	4598	317	2499	54.3
Not Low Income	2014	4622	390	4134	89.4	4611	383	3861	83.7	4616	373	3703	80.2
Students with Disabilities	2014	1450	301	672	46.3	1449	280	539	37.2	1455	281	480	33.0
Students without Disabilities	2014	7762	374	6524	84.1	7752	363	5935	76.6	7759	357	5722	73.7
LEP students	2014	972	271	231	23.8	972	249	191	19.7	978	263	223	22.8
Not LEP students	2014	8240	373	6965	84.5	8229	362	6283	76.4	8236	355	5979	72.6
Migrant students	2014	784	332	504	64.3	786	318	450	57.3	783	326	462	59.0
Not Migrant students	2014	8428	365	6892	79.4	8415	353	6024	71.6	8431	347	5740	68.1
Fairbanks North Star Borough Schools (16)	2014	977	369	807	82.6	976	360	736	75.4	979	354	685	70.0
Female	2014	453	381	394	87.0	451	383	375	83.1	454	361	339	74.7
Male	2014	524	359	413	78.8	525	341	361	68.8	525	349	346	65.9
African American	2014	67	339	47	70.1	67	316	38	56.7	67	318	36	53.7
Alaska Native/Am. Indian	2014	88	325	51	58.0	87	311	44	50.6	87	316	44	50.6
Asian/Pacific Islander	2014	32	377	28	87.5	32	373	25	78.1	32	369	22	68.8
Caucasian	2014	585	382	516	88.2	585	374	472	80.7	586	367	443	75.6
Hispanic	2014	93	355	71	76.3	93	348	70	75.3	95	336	64	67.4
Two or More Races	2014	112	366	94	83.9	112	361	87	77.7	112	351	76	67.9
Low Income	2014	344	340	244	70.9	345	328	214	62.0	347	326	198	57.1
Not Low Income	2014	633	385	563	88.9	631	378	522	82.7	632	370	487	77.1
Students with Disabilities	2014	170	303	77	45.3	171	290	68	39.8	172	287	58	33.7
Students without Disabilities	2014	807	383	730	90.5	805	375	668	83.0	807	368	627	77.7
LEP students	2014	15	260	4	26.7	15	255	2	13.3	17	267	5	29.4
Not LEP students	2014	962	371	803	83.5	961	362	734	76.4	962	356	680	70.7
Migrant students	2014	30	340	20	66.7	30	317	16	53.3	30	322	16	53.3
Not Migrant students	2014	947	370	787	83.1	946	362	720	76.1	949	355	669	70.5

Alaska Student Assessments  
Standards Based Assessment  
Summary Report - Grade 7

Group	Year	Reading				Writing				Mathematics			
		Number Tested	Mean Scale Score	Advanced/ Proficient		Number Tested	Mean Scale Score	Advanced/ Proficient		Number Tested	Mean Scale Score	Advanced/ Proficient	
				N	%			N	%			N	%
State	2014	9419	377	7659	81.3	9417	351	6863	72.9	9434	341	6214	65.9
Female	2014	4533	388	3869	85.4	4532	368	3642	80.4	4540	345	3116	68.6
Male	2014	4886	367	3790	77.6	4885	334	3221	65.9	4894	338	3098	63.3
African American	2014	304	354	235	77.3	303	332	201	66.3	308	306	155	50.3
Alaska Native/Am. Indian	2014	2203	324	1285	58.3	2211	301	1028	46.5	2211	297	974	44.1
Asian/Pacific Islander	2014	897	364	710	79.2	898	347	659	73.4	901	337	586	65.0
Caucasian	2014	4628	405	4250	91.8	4619	375	3896	84.3	4620	366	3576	77.4
Hispanic	2014	592	378	495	83.6	588	353	456	77.6	594	336	386	65.0
Two or More Races	2014	795	384	684	86.0	798	356	623	78.1	800	343	537	67.1
Low Income	2014	4455	348	3157	70.9	4466	323	2698	60.4	4475	312	2347	52.4
Not Low Income	2014	4964	403	4502	90.7	4951	376	4165	84.1	4959	368	3867	78.0
Students with Disabilities	2014	1357	309	655	48.3	1365	285	508	37.2	1371	274	387	28.2
Students without Disabilities	2014	8062	389	7004	86.9	8052	362	6355	78.9	8063	353	5827	72.3
LEP students	2014	1006	280	326	32.4	1013	264	223	22.0	1023	258	214	20.9
Not LEP students	2014	8413	389	7333	87.2	8404	361	6640	79.0	8411	351	6000	71.3
Migrant students	2014	793	345	552	69.6	793	322	466	58.8	794	317	434	54.7
Not Migrant students	2014	8626	380	7107	82.4	8624	353	6397	74.2	8640	344	5780	66.9
Fairbanks North Star Borough Schools (16)	2014	970	378	805	83.0	972	352	726	74.7	981	342	654	66.7
Female	2014	462	389	401	86.8	462	371	383	82.9	466	344	324	69.5
Male	2014	508	368	404	79.5	510	336	343	67.3	515	340	330	64.1
African American	2014	40	337	33	82.5	40	319	24	60.0	42	309	21	50.0
Alaska Native/Am. Indian	2014	108	332	69	63.9	111	303	53	47.7	112	299	50	44.6
Asian/Pacific Islander	2014	40	377	35	87.5	40	363	32	80.0	42	358	31	73.8
Caucasian	2014	603	390	523	86.7	603	366	483	80.1	602	355	439	72.9
Hispanic	2014	65	377	54	83.1	64	350	49	76.6	68	332	43	63.2
Two or More Races	2014	114	372	91	79.8	114	338	85	74.6	115	330	70	60.9
Low Income	2014	347	355	260	74.9	351	328	220	62.7	359	314	190	52.9
Not Low Income	2014	623	391	545	87.5	621	366	506	81.5	622	359	464	74.6
Students with Disabilities	2014	152	301	62	40.8	159	280	53	33.3	162	268	41	25.3
Students without Disabilities	2014	818	392	743	90.8	813	367	673	82.8	819	357	613	74.8
LEP students	2014	21	271	6	28.6	21	266	6	28.6	26	257	6	23.1
Not LEP students	2014	949	380	799	84.2	951	354	720	75.7	955	345	648	67.9
Migrant students	2014	34	353	29	85.3	34	329	22	64.7	34	307	18	52.9
Not Migrant students	2014	936	379	776	82.9	938	353	704	75.1	947	343	636	67.2



Alaska Student Assessments  
Standards Based Assessment  
Summary Report - Grade 8

Group	Year	Reading				Writing				Mathematics				Science			
		Number Tested	Mean Scale Score	Advanced/ Proficient		Number Tested	Mean Scale Score	Advanced/ Proficient		Number Tested	Mean Scale Score	Advanced/ Proficient		Number Tested	Mean Scale Score	Advanced/ Proficient	
				N	%			N	%			N	%			N	%
State	2014	9324	382	7787	83.5	9301	358	7039	75.7	9330	339	6370	68.3	9152	309	5246	57.3
Female	2014	4522	391	3942	87.2	4520	376	3728	82.5	4531	340	3159	69.7	4451	306	2481	55.7
Male	2014	4802	372	3845	80.1	4781	341	3311	69.3	4799	338	3211	66.9	4701	312	2765	58.8
African American	2014	346	347	252	72.8	345	328	218	63.2	347	296	164	47.3	348	278	120	34.5
Alaska Native/Am. Indian	2014	2170	339	1427	65.8	2170	311	1141	52.6	2170	302	1046	48.2	2133	269	697	32.7
Asian/Pacific Islander	2014	851	373	701	82.4	850	362	672	79.1	859	337	590	68.7	853	298	431	50.5
Caucasian	2014	4549	408	4211	92.6	4538	383	3929	86.6	4542	364	3644	80.2	4424	333	3219	72.8
Hispanic	2014	652	369	540	82.8	648	350	491	75.8	653	322	404	61.9	645	299	334	51.8
Two or More Races	2014	756	383	656	86.8	750	361	588	78.4	759	341	522	68.8	749	314	445	59.4
Low Income	2014	4342	352	3197	73.6	4329	328	2754	63.6	4346	312	2388	54.9	4270	283	1744	40.8
Not Low Income	2014	4982	407	4590	92.1	4972	384	4285	86.2	4984	363	3982	79.9	4882	332	3502	71.7
Students with Disabilities	2014	1331	309	656	49.3	1312	282	475	36.2	1326	268	383	28.9	1292	251	276	21.4
Students without Disabilities	2014	7993	394	7131	89.2	7989	371	6564	82.2	8004	351	5987	74.8	7860	318	4970	63.2
LEP students	2014	866	286	307	35.5	861	267	215	25.0	873	255	171	19.6	860	224	55	6.4
Not LEP students	2014	8458	391	7480	88.4	8440	367	6824	80.9	8457	348	6199	73.3	8292	318	5191	62.6
Migrant students	2014	790	354	593	75.1	786	331	503	64.0	790	319	468	59.2	784	287	329	42.0
Not Migrant students	2014	8534	384	7194	84.3	8515	361	6536	76.8	8540	341	5902	69.1	8368	311	4917	58.8
Fairbanks North Star Borough Schools (16)	2014	1015	389	890	87.7	1009	366	808	80.1	1014	345	728	71.8	996	318	647	65.0
Female	2014	498	397	452	90.8	497	381	425	85.5	500	344	362	72.4	491	314	307	62.5
Male	2014	517	383	438	84.7	512	351	383	74.8	514	347	366	71.2	505	322	340	67.3
African American	2014	63	356	53	84.1	64	337	43	67.2	63	305	34	54.0	63	282	23	36.5
Alaska Native/Am. Indian	2014	133	340	92	69.2	131	310	74	56.5	131	301	68	51.9	125	279	51	40.8
Asian/Pacific Islander	2014	34	393	32	94.1	34	387	29	85.3	37	357	29	78.4	37	317	27	73.0
Caucasian	2014	582	406	532	91.4	581	382	504	86.7	583	360	456	78.2	574	333	429	74.7
Hispanic	2014	74	380	62	83.8	72	359	56	77.8	72	332	51	70.8	71	303	47	66.2
Two or More Races	2014	129	388	119	92.2	127	364	102	80.3	128	347	90	70.3	126	312	70	55.6
Low Income	2014	341	359	269	78.9	338	332	230	68.0	339	312	189	55.8	330	291	159	48.2
Not Low Income	2014	674	405	621	92.1	671	384	578	86.1	675	362	539	79.9	666	331	488	73.3
Students with Disabilities	2014	168	318	94	56.0	165	289	68	41.2	166	277	54	32.5	161	258	43	26.7
Students without Disabilities	2014	847	404	796	94.0	844	381	740	87.7	848	358	674	79.5	835	329	604	72.3
LEP students	2014	22	303	12	54.5	22	283	6	27.3	25	282	9	36.0	25	234	4	16.0
Not LEP students	2014	993	391	878	88.4	987	368	802	81.3	989	347	719	72.7	971	320	643	66.2
Migrant students	2014	37	364	30	81.1	34	339	24	70.6	34	313	21	61.8	35	297	18	51.4
Not Migrant students	2014	978	390	860	87.9	975	367	784	80.4	980	346	707	72.1	961	319	629	65.5

Alaska Student Assessments  
Standards Based Assessment  
Summary Report - Grade 9

Group	Year	Reading				Writing				Mathematics			
		Number Tested	Mean Scale Score	Advanced/ Proficient		Number Tested	Mean Scale Score	Advanced/ Proficient		Number Tested	Mean Scale Score	Advanced/ Proficient	
				N	%			N	%			N	%
State	2014	9319	370	7550	81.0	9290	353	6769	72.9	9302	330	5720	61.5
Female	2014	4474	379	3826	85.5	4459	370	3572	80.1	4463	333	2839	63.6
Male	2014	4845	361	3724	76.9	4831	337	3197	66.2	4839	327	2881	59.5
African American	2014	325	346	243	74.8	323	330	208	64.4	324	298	138	42.6
Alaska Native/Am. Indian	2014	2187	324	1333	61.0	2166	306	1086	50.1	2179	292	897	41.2
Asian/Pacific Islander	2014	864	355	668	77.3	860	344	604	70.2	865	329	528	61.0
Caucasian	2014	4620	396	4209	91.1	4617	378	3888	84.2	4608	352	3369	73.1
Hispanic	2014	628	365	514	81.8	625	349	458	73.3	628	317	358	57.0
Two or More Races	2014	695	372	583	83.9	699	353	525	75.1	698	328	430	61.6
Low Income	2014	4142	339	2880	69.5	4122	321	2420	58.7	4131	301	1904	46.1
Not Low Income	2014	5177	394	4670	90.2	5168	378	4349	84.2	5171	353	3816	73.8
Students with Disabilities	2014	1274	301	586	46.0	1266	276	393	31.0	1272	262	300	23.6
Students without Disabilities	2014	8045	381	6964	86.6	8024	385	6376	79.5	8030	341	5420	67.5
LEP students	2014	940	281	317	33.7	928	263	183	19.7	939	255	162	17.3
Not LEP students	2014	8379	380	7233	86.3	8362	363	6586	78.8	8363	338	5558	66.5
Migrant students	2014	793	342	562	70.9	785	325	477	60.8	791	311	423	53.5
Not Migrant students	2014	8526	372	6988	82.0	8505	355	6292	74.0	8511	331	5297	62.2
Fairbanks North Star Borough Schools (16)	2014	989	372	826	83.5	981	358	741	75.5	983	331	621	63.2
Female	2014	473	380	422	89.2	473	373	389	82.2	473	334	315	66.6
Male	2014	516	365	404	78.3	508	344	352	69.3	510	327	306	60.0
African American	2014	51	344	37	72.5	51	331	31	60.8	51	304	24	47.1
Alaska Native/Am. Indian	2014	122	334	83	68.0	120	314	71	59.2	121	296	51	42.1
Asian/Pacific Islander	2014	33	362	27	81.8	33	351	23	69.7	34	338	22	64.7
Caucasian	2014	613	384	532	86.8	609	372	493	81.0	608	340	412	67.8
Hispanic	2014	64	359	53	82.8	63	339	44	69.8	64	318	37	57.8
Two or More Races	2014	106	374	94	88.7	105	354	79	75.2	105	335	75	71.4
Low Income	2014	330	347	248	75.2	326	327	204	62.6	327	305	168	51.4
Not Low Income	2014	659	385	578	87.7	655	373	537	82.0	656	343	453	69.1
Students with Disabilities	2014	158	300	67	42.4	158	272	41	25.9	158	261	33	20.9
Students without Disabilities	2014	831	386	759	91.3	823	374	700	85.1	825	344	588	71.3
LEP students	2014	22	299	11	50.0	21	278	6	28.6	23	278	6	26.1
Not LEP students	2014	967	374	815	84.3	960	360	735	76.6	960	332	615	64.1
Migrant students	2014	37	343	29	78.4	36	329	24	66.7	37	317	22	59.5
Not Migrant students	2014	952	373	797	83.7	945	359	717	75.9	946	331	599	63.3

Alaska Student Assessments  
Standards Based Assessment  
Summary Report - Grade 10

Group	Year	Reading				Writing				Mathematics				Science			
		Number Tested	Mean Scale Score	Advanced/ Proficient		Number Tested	Mean Scale Score	Advanced/ Proficient		Number Tested	Mean Scale Score	Advanced/ Proficient		Number Tested	Mean Scale Score	Advanced/ Proficient	
				N	%			N	%			N	%			N	%
State	2014	8591	347	6470	75.3	8583	349	6512	75.9	8569	327	5474	63.9	8255	327	5385	65.2
Female	2014	4249	354	3341	78.6	4250	365	3533	83.1	4252	327	2754	64.8	4098	323	2598	63.4
Male	2014	4342	341	3129	72.1	4333	333	2979	68.8	4317	328	2720	63.0	4157	331	2787	67.0
African American	2014	298	321	189	63.4	298	326	198	66.4	300	294	143	47.7	294	292	134	45.6
Alaska Native/Am. Indian	2014	1938	309	1069	55.2	1936	312	1097	56.7	1935	294	870	45.0	1872	293	848	45.3
Asian/Pacific Islander	2014	798	325	522	65.4	796	338	568	71.4	795	321	470	59.1	786	303	389	49.5
Caucasian	2014	4404	371	3816	86.6	4404	370	3764	85.5	4388	348	3293	75.0	4191	350	3296	78.6
Hispanic	2014	561	340	424	75.6	559	343	421	75.3	562	316	331	58.9	539	320	336	62.3
Two or More Races	2014	592	345	450	76.0	590	347	464	78.6	589	324	367	62.3	573	325	382	66.7
Low Income	2014	3589	320	2218	61.8	3585	321	2244	62.9	3565	301	1769	49.6	3442	300	1692	49.2
Not Low Income	2014	5002	367	4252	85.0	5018	369	4268	85.1	5004	346	3705	74.0	4813	346	3693	76.7
Students with Disabilities	2014	968	274	320	33.1	966	271	298	30.8	956	258	208	21.8	915	264	248	27.1
Students without Disabilities	2014	7623	357	6150	80.7	7617	359	6214	81.6	7613	336	5266	69.2	7340	335	5137	70.0
LEP students	2014	708	256	120	16.9	698	265	155	22.2	706	252	126	17.8	684	242	70	10.2
Not LEP students	2014	7883	355	6350	80.6	7885	357	6357	80.6	7863	334	5348	68.0	7571	335	5315	70.2
Migrant students	2014	674	324	436	64.7	674	326	434	64.4	665	307	366	55.0	652	303	331	50.8
Not Migrant students	2014	7917	349	6034	76.2	7909	351	6078	76.8	7904	329	5108	64.6	7603	329	5054	66.5
Fairbanks North Star Borough Schools (16)	2014	910	352	708	77.8	911	352	706	77.5	905	328	589	65.1	856	332	576	67.3
Female	2014	404	358	332	82.2	406	373	358	88.2	403	328	279	69.2	388	326	247	63.7
Male	2014	506	347	376	74.3	505	334	348	68.9	502	328	310	61.8	468	337	329	70.3
African American	2014	58	315	31	53.4	59	329	36	61.0	60	291	27	45.0	58	284	22	37.9
Alaska Native/Am. Indian	2014	98	313	54	55.1	100	313	56	56.0	98	296	42	42.9	91	298	44	48.4
Asian/Pacific Islander	2014	25	322	17	68.0	25	332	18	72.0	25	326	16	64.0	25	309	11	44.0
Caucasian	2014	567	363	475	83.8	565	362	463	81.9	560	337	394	70.4	531	344	394	74.2
Hispanic	2014	61	357	52	85.2	62	355	55	88.7	62	327	39	62.9	56	335	39	69.6
Two or More Races	2014	101	352	79	78.2	100	351	78	78.0	100	337	71	71.0	95	333	66	69.5
Low Income	2014	236	325	148	62.7	233	320	145	62.2	234	302	117	50.0	218	303	107	49.1
Not Low Income	2014	674	362	560	83.1	678	363	561	82.7	671	338	472	70.3	638	342	469	73.5
Students with Disabilities	2014	115	267	30	26.1	116	265	30	25.9	115	251	19	16.5	101	252	25	24.8
Students without Disabilities	2014	795	364	678	85.3	795	364	676	85.0	790	340	570	72.2	755	343	551	73.0
LEP students	2014	15	246	*	< 20	15	250	2	13.3	15	258	2	13.3	15	232	*	< 20
Not LEP students	2014	895	354	707	79.0	896	353	704	78.6	890	329	587	66.0	841	334	575	68.4
Migrant students	2014	23	337	14	60.9	24	339	16	66.7	24	328	15	62.5	24	301	12	50.0
Not Migrant students	2014	887	352	694	78.2	887	352	690	77.8	881	328	574	65.2	832	333	564	67.8