



Junior Year: Preparing for a Pathway

Junior Parent/Guardian Information Night
September 14, 2023

Wildcat Foundation



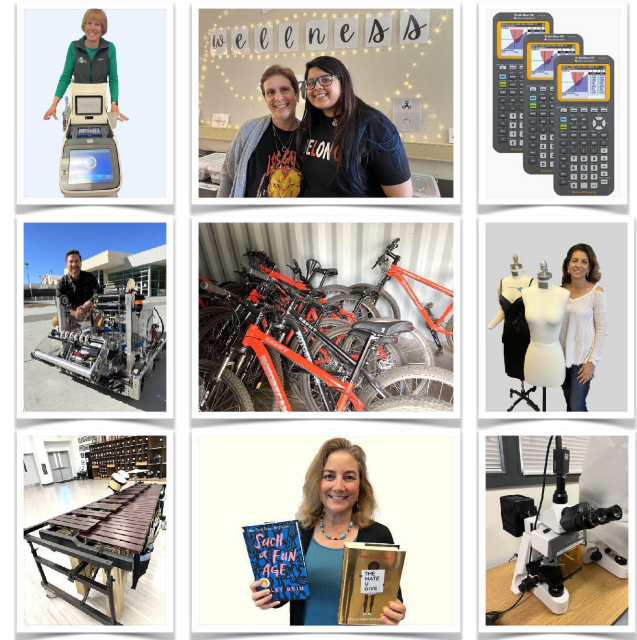
LOS GATOS HIGH SCHOOL
**WILDCAT
FOUNDATION**

Your contribution boosts:










- ▶ Academics
- ▶ Technology
- ▶ Electives
- ▶ Wellness
- ▶ Community

Every student benefits!

Your Wildcat Foundation donation
also funds the LGHS Home & School Club

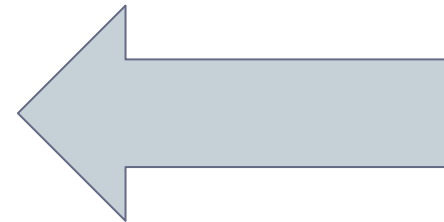
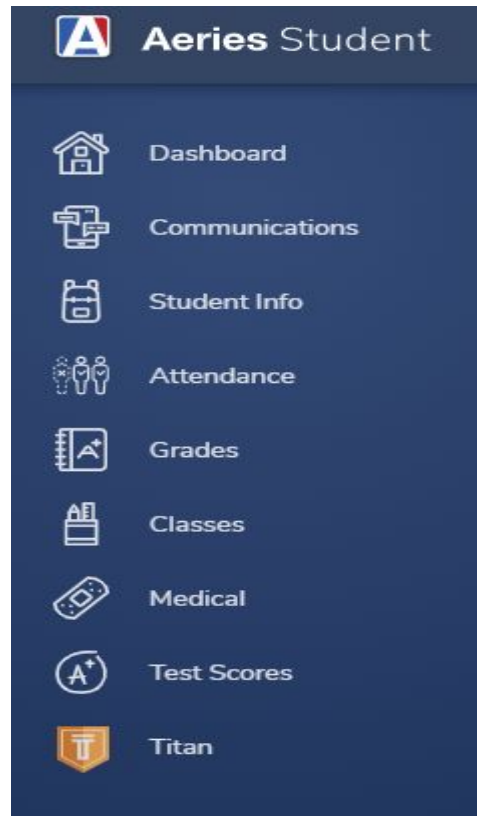


Administration and Support

House 1 9 th Grade	House 1 11 th Grade	House 2 10 th Grade	House 3 12 th Grade	Principal
Allison Stits Assistant Principal  astits@lgsuhd.org (408) 354-2730 x333	Amy Drolette Assistant Principal  adrolette@lgsuhd.org (408) 354-2730 x213	David Poetzinger Assistant Principal  dpoetzinger@lgsuhd.org (408) 354-2730 x360	Kristina Grasty Assistant Principal  kgrasty@lgsuhd.org (408) 354-2730 x386	Kevin Buchanan Principal  kbuchanan@lgsuhd.org (408) 354-2730 x212
Jennifer Blomquist Administrative Assistant  jblomquist@lgsuhd.org (408) 354-2730 x221		Stacey Caro Administrative Assistant  scaro@lgsuhd.org (408) 354-2730 x227	Cathi Miezio Administrative Assistant  cmiezio@lgsuhd.org (408) 354-2730 x271	Cathy Sanchez Principal's Assistant  csanchez@lgsuhd.org (408) 354-2730 x214

School Information

- ParentSquare – primary distribution
 - An add-on to Aeries
 - Please make sure you are subscribed



School Counselors



Farah Manganello

A-C



Louis Rich

D-Ha



Laressa Mead

Hb-L



Rory McKee

M-P



Sarah Pereira

Q-S



Kassandra Cochran

T-Z

OVERVIEW

- Junior Year – Expectations for the second half of high school
- Post High School Research and Planning
- Overview of Higher Education Systems and Options
- Next Steps

Junior Year

- Increased Workload
- Additional Testing – A changing landscape
- School Type/Major/Career Search
- Personal Interests and Extracurricular Participation Deepen and Broaden
- Increased Independence and Responsibility

Priorities for Junior Year

- Fulfill graduation and college entrance requirements
- Nurture intellectual curiosity, self-discipline and study habits for the future
- Deepen involvement & connection
- Reflect on non-school areas of growth that are important factors toward independence
 - Concrete steps toward self-management and less reliance on the adults in one's life to complete these



Higher Education Systems

California Community College (CCC)

■ 116 CCCs

- Local Examples:
 - West Valley, Mission, Foothill, De Anza, Evergreen Valley, San Jose City, Cabrillo



■ 2+2 Transfer Program

- Fulfill general education/lower division transfer requirements
- Associate Degree for Transfer (ADT) → CSU
 - <https://www2.calstate.edu/apply/transfer/Pages/ccc-associate-degree-for-transfer.aspx>
- Transfer Admission Guarantee (TAG) → UC (six of nine UC campuses)
 - <https://admission.universityofcalifornia.edu/admission-requirements/transfer-requirements/uc-transfer-programs/transfer-admission-guarantee-tag.html>

■ Career Degrees and Certificates – Degree programs include general education coursework; certificates typically do not

- Parks Management, Automotive Technology, Culinary Arts

California State University (CSU)

- Examples:
 - San Jose State University
 - San Diego State University
 - Cal Poly San Luis Obispo
- 23 Campuses
 - Admission based on:
 - A-G Coursework, 9th-12th
 - A-G GPA, 10th-11th
 - As of March 2022, the SAT and ACT have been removed from the undergraduate admissions process
 - https://www2.calstate.edu/apply/freshman/getting_into_the_csu/pages/admission-requirements.aspx#agCoursesScroll



University of California (UC)

■ Examples:

- UC Irvine
- UC Merced
- UC Santa Cruz

■ 9 Undergraduate Campuses

■ Admission based on Comprehensive Review

- A-G Curriculum, grades 9-12
- A-G GPA, grades 10-11
- Quality of the senior year academic program
- Special talents, achievements, and/or awards in a particular field
- For more information regarding Comprehensive Review, please visit <https://admission.universityofcalifornia.edu/counselors/preparing-freshman-students/comprehensive-review.html>
- *SAT/ACT – The UC is a test-blind system; scores are not used when making admissions decisions or awarding scholarships

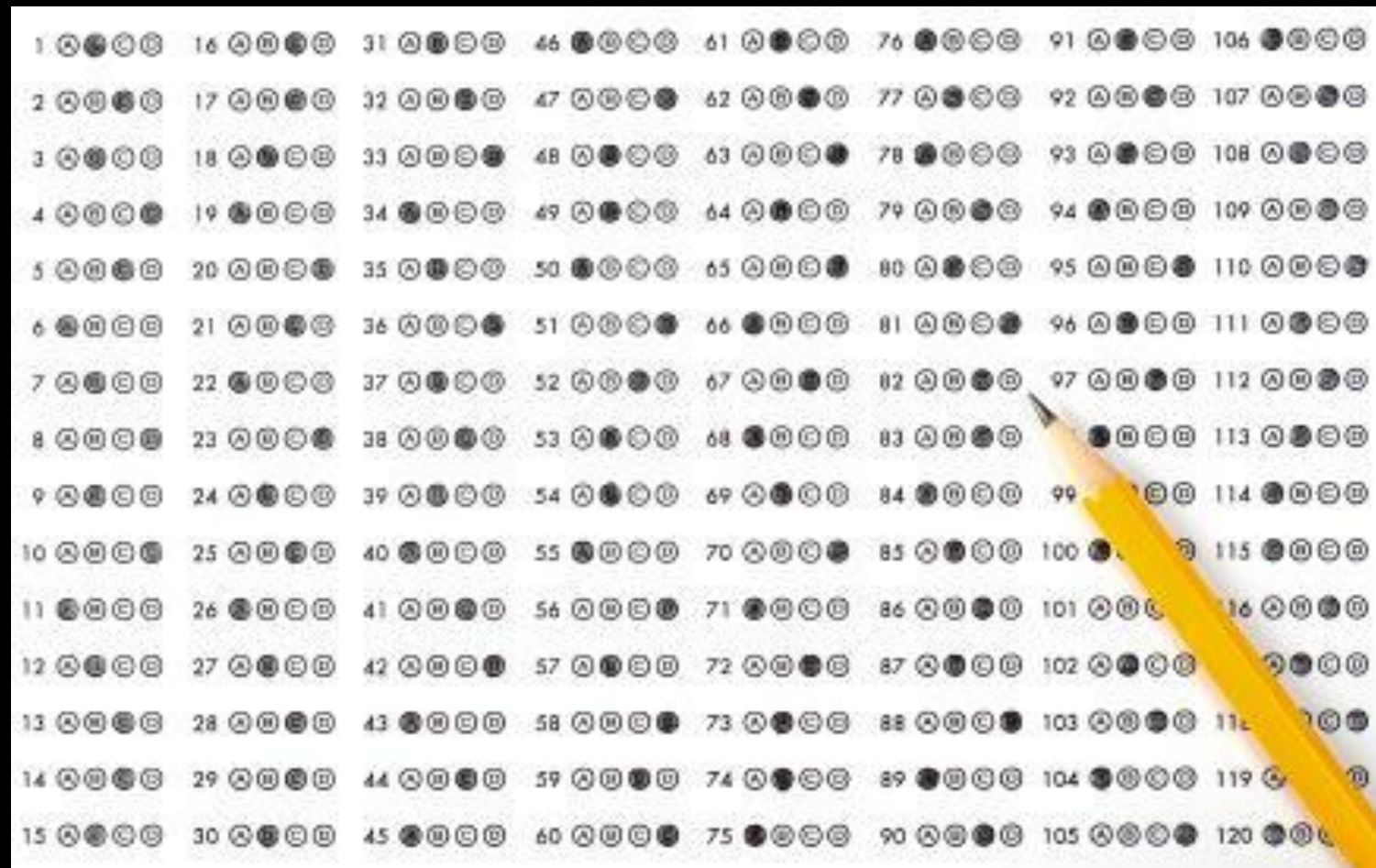


Out-of-State Public Universities

- Examples:
 - Oregon State University
 - University of Arizona
- 1,500+ out-of-state public colleges/universities
 - Each establishes its own rules for eligibility and admission
- Admission generally based on:
 - Academic course requirements across core subject areas
 - Rigor and advanced level of study within a college prep curriculum
 - Academic GPA
 - Essay(s) – some will require, others will not
 - Letters of recommendation are generally not required
 - SAT/ACT* - most colleges are test optional and some are test blind; applicants must check the test requirement for each college or university they plan to apply to

Private Colleges/Universities

- Examples:
 - Santa Clara University
 - Boston University
- 1,500+ private colleges/universities
 - Each establishes its own rules for eligibility and admission
- Admission generally based on:
 - Academic program and rigor
 - GPA – may be cumulative or limited to grades 10-11
 - Essays and supplemental writing tasks
 - Extracurricular activities, employment, school/community involvement, and other non-academic factors
 - Teacher evaluation/letter of recommendation
 - Counselor report/letter of recommendation
 - SAT/ACT – Important for students to verify if a college is test optional or test blind; some may require a score



Entrance Tests

PSAT

- Administered Saturday, October 14 at LGHS
- Formal practice opportunity for SAT
- Now digital (more information ahead!)
- Results used to determine National Merit Scholarship awards – 11th grade sitting only
- The exam is now 2 hours, 14 minutes and mirrors the number of questions and time limit of the revised, digital SAT (March 2024)
- <https://satsuite.collegeboard.org/psat-nmsqt/whats-on-the-test>

SAT – Shift to Digital

■ Digital SAT

- Beginning this spring (March 2024), the SAT will change to a digital format administration only
- The exam will be divided into two sections – Reading & Writing and Math
- The test will consist of 98 questions with a 2 hour, 14 minute time limit
- Each section is divided into two modules, with an adaptive format. The first module contains a mix of easy, medium and hard questions. The second module will adapt the question difficulty based on performance within the first.
- <https://satsuite.collegeboard.org/sat/whats-on-the-test>

SAT – Shift to Digital, Continued

■ Test Overview

Table 7. Digital SAT Suite: Overall Test Specifications.

Characteristic	Reading and Writing (RW) Section	Math Section
Administration	Two-stage adaptive test design: one Reading and Writing section administered via two separately timed modules	Two-stage adaptive test design: one Math section administered via two separately timed modules
Test length (number of operational and pretest questions)	1st module: 25 operational questions and 2 pretest questions 2nd module: 25 operational questions and 2 pretest questions	1st module: 20 operational questions and 2 pretest questions 2nd module: 20 operational questions and 2 pretest questions
Time per module	1st module: 32 minutes 2nd module: 32 minutes	1st module: 35 minutes 2nd module: 35 minutes
Total number of questions	54 questions	44 questions
Total time allotted	64 minutes	70 minutes
Average time per question	1.19 minutes	1.59 minutes

ACT

- Similar to the SAT in purpose, different in design
- Divided into four sections with an optional fifth (writing test)
 - English – revising and editing texts and essays
 - Math – high school mathematics through beginning pre-calculus
 - Reading – comprehension and logical decision-making
 - Science – interpretation, analysis and reasoning
- 2 hours, 55 minutes, plus optional 40 minute writing section

College Entrance Testing

- Thoughts to consider
 - Most colleges and universities are now test-blind or test-optional
 - LGHS students often test according to a traditional timeline but are selective in the scores they submit
 - The UCs and CSUs are two of the most prominent test-blind systems – they do not consider scores in making admissions decisions
 - Overall, fewer LGHS students are testing, students take the SAT and ACT fewer times, and our system destination percentages remain largely the same the past four years



Post High School Planning Resources

Naviance

student.naviance.com/lghs

Our Counseling Office Information Hub

- Student Data – Imported from Aeries and College Board/ACT
- Powerful College Search Engines – SuperMatch and Advanced College Search
- Self-Discovery Assessments – for personality, career and overall strengths
- Application Management – Colleges I'm Thinking About and Colleges I'm Applying To, for prospective and actual application lists

Naviance – College Research

The screenshot displays the Naviance College Research interface. At the top, a navigation bar includes tabs for Home, Self-Discovery, Careers, Colleges (which is active), and Planner. A heart icon is located in the top right corner. A dropdown menu is open under the 'Colleges' tab, showing options like College Home, Find Your fit, SuperMatch College Search, College Match, College Events, Scattergrams, Advanced College Search, College Lookup, Research Colleges, Colleges I'm Thinking About, College Visits, College Compare, College Resources, Acceptance History, College Maps, Apply to College, Colleges I'm Applying to, and Test Scores. Below the navigation bar, there's a section titled 'Plan for life after high school and select the path that will lead to future success.' with a 'Select Path' button. To the right, there's a 'Naviance' section with a message and a 'My School' section with a message. Below these, there's a 'What's New' section with three items: Fairfield University, Southern Methodist University, and United States Air Force Academy, each with a date and time and a 'more info' link. At the bottom, there's a 'Top Knowledge Sets' section with a folder icon and a button 'Explore and Favorite Careers'.

Home Self-Discovery Careers **Colleges** Planner

College Home

Find Your fit

- SuperMatch College Search
- College Match
- College Events
- Scattergrams
- Advanced College Search
- College Lookup

Research Colleges

- Colleges I'm Thinking About
- College Visits
- College Compare
- College Resources
- Acceptance History
- College Maps

Apply to College

- Colleges I'm Applying to
- Test Scores

Naviance

message is available at this time

My School

to overdue or upcoming to see what's next or c

Plan for life after high school and select the path that will lead to future success.

Select Path

What's New

- Fairfield University will be visiting you on 2:25 pm [more info](#)
- Southern Methodist University will be visiting you on 7th, 2023 at 10:00 am [more info](#)
- United States Air Force Academy will be visiting you on 7th, 2023 at 12:15 pm [more info](#)

Top Knowledge Sets


Explore and favorite careers to discover the knowledge areas you'll need to succeed.

Explore and Favorite Careers


Careers

Naviance - College Info



Loyola Marymount University 
Los Angeles, CA, United States
lmu.edu

[Virtual Tour](#)[Communicate ▾](#)[Apply Online](#)[Learn More ▾](#)[Overview](#)[Studies](#)[Student Life](#)[Admissions](#)[Costs](#)

AVERAGE NET PRICE 

\$32,730

Family Income

\$0 - \$30k ▾

[More about Cost & Aid](#)

GRADUATION RATE 

74%

4 Year

6 Year

[More about learning environment](#)

ACCEPTANCE RATE 

47%

[Check out Scattergrams to see how this relates to you](#)

NEXT DEADLINE

October

15

Spring 2024 Term

Regular Decision Deadline

Loyola Marymount University

Virtual Tour

Communicate ▼

[Apply Online](#)

Learn

Overview

Studies

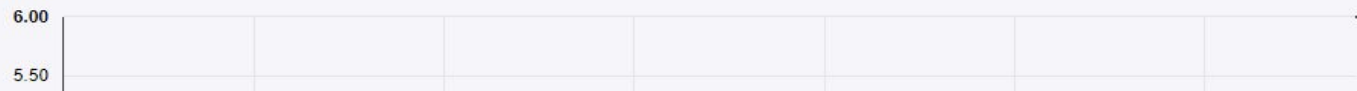
Student Life

Admissions

Costs

Year	Enrolled	Accepted	Applied
2023	18	25	48
2022	7	25	72
2021	5	17	48
2020	26	26	55
2019	21	21	63
2018	5	24	56

Comparing Weighted GPA with SAT (1600) and ☐ applied test optional



Naviance – College Research

SuperMatch College Search

||| Choose Fit Criteria

Location

Academics

Admission

Student Life

Diversity

Institution Characteristics

Cost

Athletics

Resources

Groups

Your Fit Criteria

Saved Searches [Choose one](#) ▼

5 selected criteria

To refine your results, use the arrows to move your criteria into the "Must Have" and "Nice to Have" boxes.

Must Have

✕ Location [13] →

✕ Major [Any] →

✕ Institution Type →

✕ Gender Concentration [1] →

✕ Offers Study Abroad →

Nice to Have

A *Nice to Have* is anything that's important to you, but isn't an absolute must have.

Your Results

Your results include **134 institutions** that are both an [academic match](#) ¹ and also match all the criteria selected above.

Fit Score ¹

Academic
Match ¹

Highlights ▼

Cost ▼

Naviance – College Visits

College Visits



Search for colleges

SEPTEMBER

Wed 06

02:25PM

Fairfield University

📍 Career Center

0/20 seats are taken.

DEADLINE PASSED

[View Details](#)

SEPTEMBER

Thu 07

10:00AM

Southern Methodist University

📍 Career Center

2/20 seats are taken.

REGISTER BY Thursday, Sep 7 2023, 09:00AM

[View Details](#)

SEPTEMBER

Thu 07

12:15PM

United States Air Force

Academy

📍 Career Center

0/20 seats are taken.

REGISTER BY Thursday, Sep 7 2023, 11:15AM

[View Details](#)

SEPTEMBER

Fri 08

The George Washington

University

REGISTER BY Friday, Sep 8 2023, 09:00AM



Naviance – Self-Discovery Suite

Self Discovery

Let's get started.

It looks like you haven't done any assessments yet. By taking Naviance assessments you'll get to know yourself better.

Here are assessments that are available for you to take now.

AchieveWorks Intelligences®



Intelligence comes in many forms. AchieveWorks Intelligences® helps you uncover your different intelligences and how to leverage them.

[Start Assessment](#)

AchieveWorks Learning and Productivity®



Discover your sensory, environmental and mindset preferences to help develop and adjust your study practices.

[Start Assessment](#)

AchieveWorks Personality®



AchieveWorks Personality® helps you identify your personality type by asking you to choose scenarios that best represent how you behave in real life.

[Start Assessment](#)

Career Cluster Finder



The Career Cluster Finder helps you identify your interests and discover career clusters that contain careers that might interest you.

[Start Assessment](#)

Career Interest Profiler



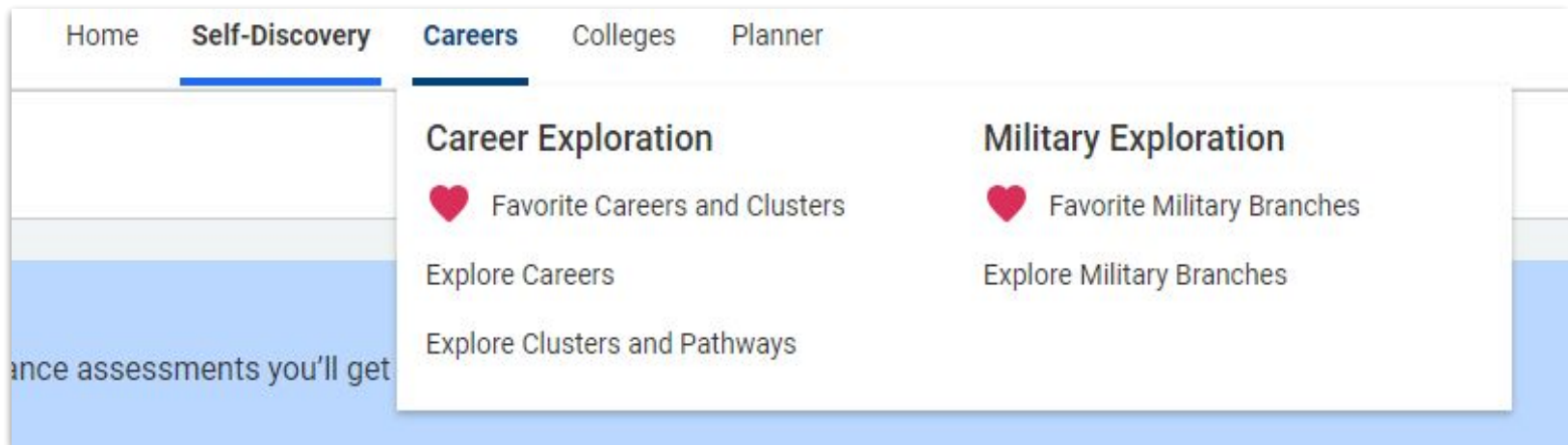
The Career Interest Profiler captures your interests to help identify your personality traits and suggests careers based on the U.S. Department of Labor's data.

Strengths Explorer®



Strengths Explorer® helps you identify your key strengths that you can use as you proceed on your college, career and life readiness journey.

Naviance – Explore Careers, Simple Search



Naviance – Explore Careers, Clusters and Pathways Search

The screenshot displays the Naviance website interface. At the top, the Naviance logo is on the left, and navigation links for Home, Self-Discovery, Careers (highlighted), Colleges, and Planner are in the center. On the right, there are icons for a heart, an envelope, a question mark, a user profile (LM), and a globe (EN), followed by a Log Out button.

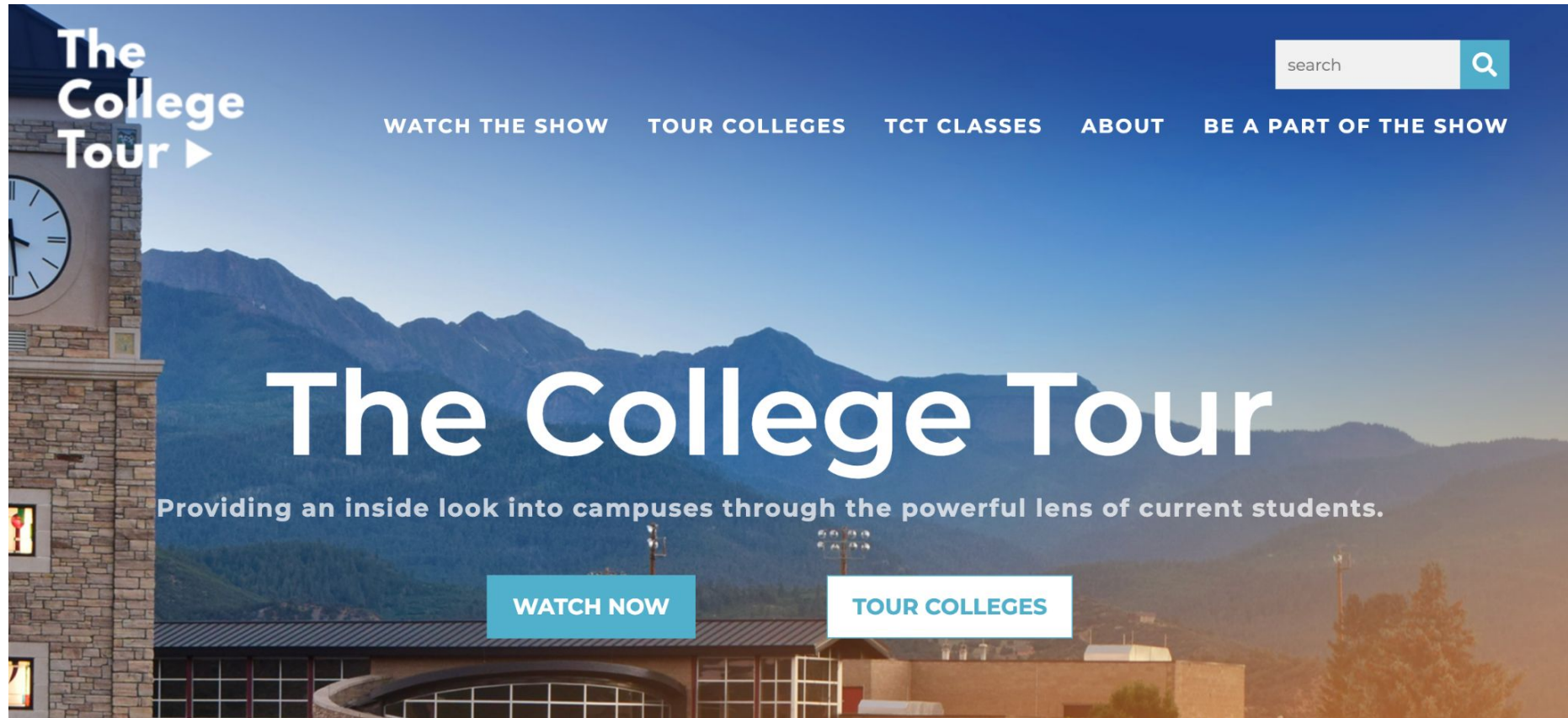
Below the navigation bar, the 'Explore Careers' section is active. A dropdown menu is open, showing three main categories: Career Exploration, Military Exploration, and Experiential Exploration. Under Career Exploration, there are links for 'Favorite Careers and Clusters', 'Explore Careers', and 'Explore Clusters and Pathways' (which is highlighted). Under Military Exploration, there are links for 'Favorite Military Branches' and 'Explore Military Branches'. Under Experiential Exploration, there is a link for 'Explore Roadtrip Nation Videos'.

Below the dropdown menu, a list of career clusters is displayed, each preceded by a right-pointing chevron (>):

- Agriculture, Food and Natural Resources
- Architecture and Construction
- Arts, Audio/Video Technology and Communications
- Business Management and Administration
- Education and Training
- Finance
- Government and Public Administration

In the bottom right corner, there is a circular profile icon with a red notification badge showing the number 13.

College Exploration Resource



<https://www.thecollegegetour.com/>

(Also a series on Amazon Prime Video)



The Planning Process

Planning for Post High School Options: Finding the Best Fit

- Know oneself – reflect on the factors that are most important to YOU as a student and individual
- Identify the most important criteria
 - For LGHS students, common criteria are location, cost, extracurricular opportunities, and majors available; yours should be your own
- Research colleges – via Naviance and other search tools
- Form a list of potential options by late April or early May
 - A personalized range of likely, probable, and stretch
- Take advantage of opportunities to visit colleges, in-person and remotely, as well attending rep visits to LGHS
 - For a complete list of college rep visits for the fall, please visit Naviance. Once logged in, check the “Colleges” tab and click “College Visits”

What Students Should Do

- Strive to earn the best grades possible in a best-suited curriculum
- Continue to pursue areas of interest and create depth within (quality and continuation)
 - Certainly not too late to try something new
- Discuss post-high-school plans with parents and other adults
- Begin to explore options, visit campuses, and outline goals
- Seek to strengthen self-advocacy skills, and become more independent in non-academic life skill factors

How Parents Can Help

- Stay up-to-date on school information
 - ParentSquare email messages
 - Website: www.lghs.net
 - Counseling Newsletter
- Remain aware of academic progress through Canvas and Aeries
- Discuss college and post-high-school planning, as well as factors in financing higher education in a healthy, positive tone
 - Be realistic
 - Keep discussions open and honest
- Help students prepare for independence, perhaps setting goals in a few key areas (i.e., organization, time management, sleep management)

The Year Ahead

- Fall Semester:
 - College-planning sessions:
 - Awareness of College Systems
 - Terminology (e.g., CSU, EA, Common App, etc.)
 - College Searches in Naviance
 - College Information Night - Date and Format TBD
- Spring Semester:
 - Help ensure students are on track for graduation and post-high school goals
 - Monitor appropriate course placement
 - Meet individually with students
 - College Application Processes
- Year-Long:
 - Meet with our College & Career Coordinator for extra assistance and ideas :)



Thank You for Joining!

