

HUSD

PARENT-LED, SCHOOL, &
DISTRICT COMMITTEES

Princess Ehiorobo & Julieta Martinez

ABOUT US

Princess Ehiorobo

- HUSD Parent Ambassador
- Involved in various HUSD communities for more than 10 years, AASAI, SSC, PTA, SBDM, etc.

Julieta Martinez

- As a parent, I have been volunteering with HUSD for 19 years in different capacities.
- My children went to Bowman, Bret Harte middle and Hayward High school.
- I have had the opportunity to be HUSD Parent Ambassador lead as well, and Promotora lead for a Local Health Center for many years, which has helped me build strong relationships within our community.
- I emigrated from Mexico 23 years ago and I identify myself as an English Learner.

Objectives

- TO FAMILIARIZE PARENTS/GUARDIANS WITH VARIOUS PARENT, SCHOOL, AND DISTRICT-LED COMMITTEES
- TO ENCOURAGE PARENTS/GUARDIANS TO PARTICIPATE IN THE VARIOUS COMMITTEES
- TO IDENTIFY THE SIGNIFICANCES OF EACH COMMITTEE

SCHOOL SITE COUNCIL

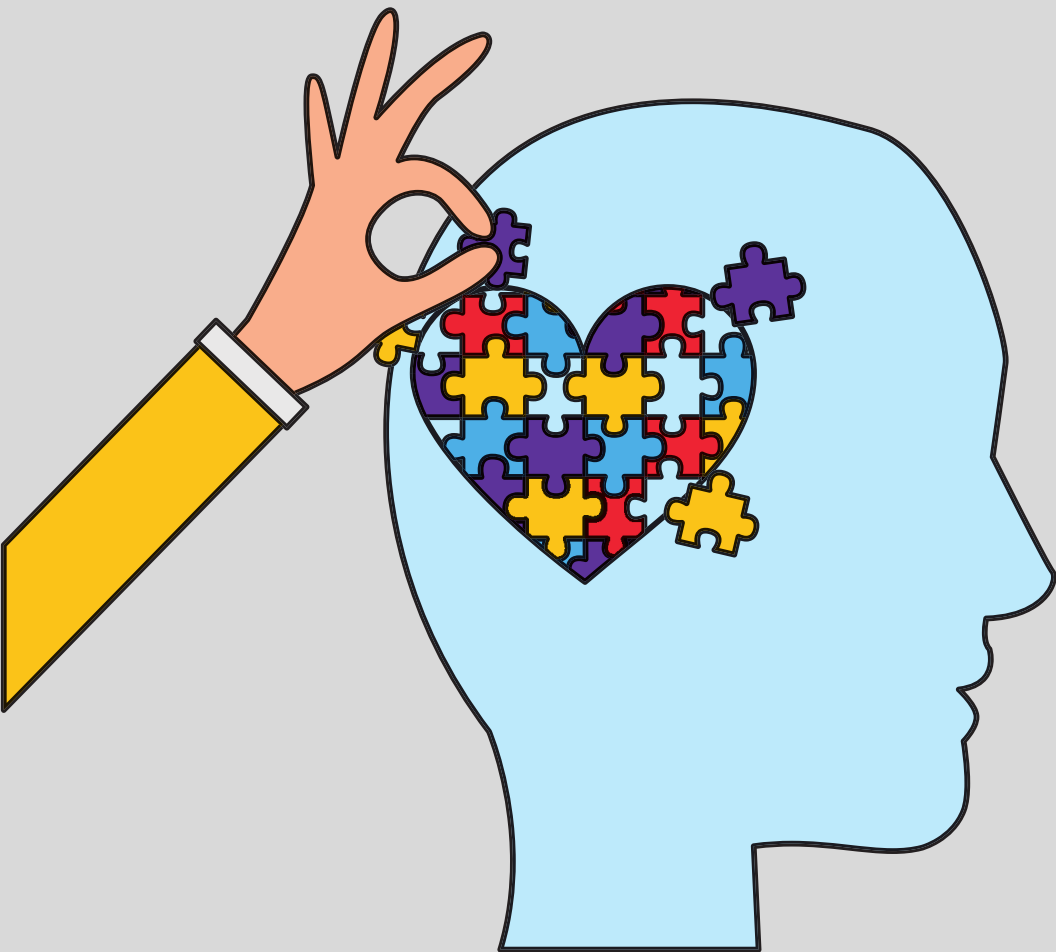
The school's governing committee determines the best use of state LCFF and federal Title 1 funds for all students.

WHO TO CONTACT: SITE ADMINISTRATOR/ PRINCIPAL



SPECIAL EDUCATION TOWN HALL MEETINGS

Special education is designed for students with disabilities, such as those with autism, and includes specialized educational services and classes. It involves parent participation, but is not a committee or council.



AFRICAN AMERICAN STUDENT ACHIEVEMENT INITIATIVE



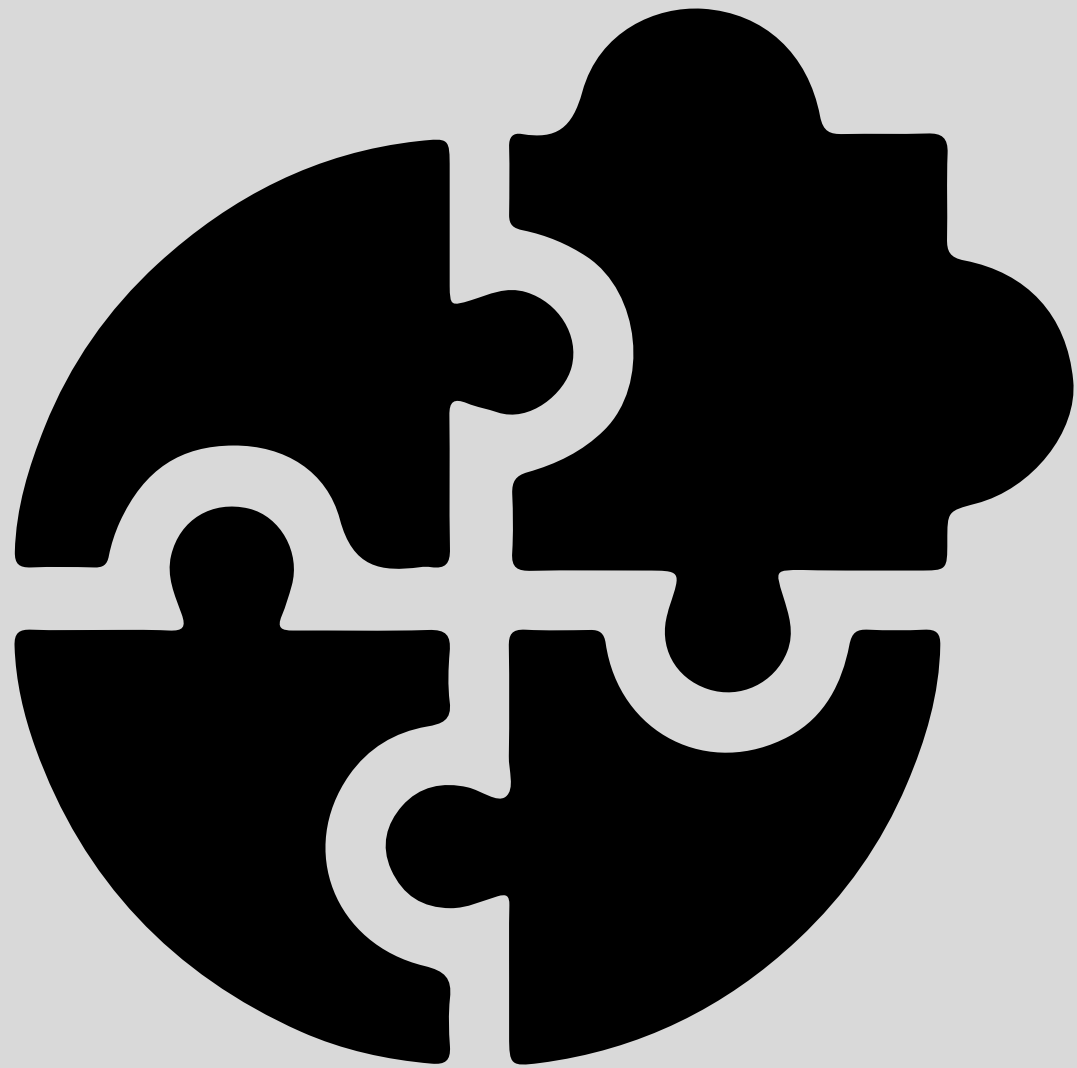
This is aimed at meeting the wants and needs of AFRICAN-AMERICAN students. Unfortunately, AFRICAN-AMERICAN students are still performing at the lowest level in the school district. The AASAI district parent leadership team, known as DPLT, is available to help. The team meets on the third Thursday of every month from 6pm to 8pm at the parent hub.

SITE BASED DECISION MAKING



As the title suggests, this text discusses the importance of decision-making and how it ensures that school staff, parents, and students can collaborate and determine the best course of action for their schools.

LOCAL CURRICULUM COUNCIL



A committee, consisting of staff and parents, discusses curriculum standards and instructional strategies to support students.

DISTRICT ADVISORY COMMITTEE



Is a broad committee that serves the community at large. It comprises of members of the city of Hayward, the superintendent, staff, classified personnel, parents, students and members of the community.

PARENT ADVISORY COMMITTEE



The Board of Education requested community engagement in developing plans for student academic success. The Parent Advisory Committee was included in the process.

SAFETY COMMITTEE

A committee discusses safety issues and provides recommendations for school sites, including the District Safety Committee.



PARENT TEACHER ASSOCIATION
PARENT TEACHER ORGANIZATION
PARENT TEACHER STUDENT ASSOCIATION



- PTA is linked at the National Level
- PTO is linked locally. It's more like a group and has different policies when compared to PTA/PTSA
- PTSA encourages student involvement and leadership

ENGLISH LEARNER ADVISORY COMMITTEE



Is a committee for parents/guardians whose language is English as second language. The role of the ELAC is to give assistance to parents/guardians. There is the District English Learner Advisory Committee which consists of parents, staff and community members who come together to advise district personnel on English learner programs and services.

PARENT AMBASSADOR



A parent ambassador is a liaison between the school district and the community. They are parents or guardians of students who volunteer at school events such as back to school night, open house, and other district events.

ASIAN & PACIFIC ISLANDER COMMUNITY INITIATIVE



This is a new committee that began September 6 at the Parent Hub from 5.30pm This initiative includes the Asian Americans, Native Hawaiians and Pacific Islanders. This initiative is to promote relationships among one another and also advocate for parents/guardians and students. This is to promote leadership as well.

COMMUNITY SCHOOLS

A community school is any school serving pre-kindergarten through high school students using a “whole-child “ approach, with “an integrated focus on academics, health and social services, youth and community development and community engagement “as quoted by the coalition of community schools.



Questions?
