

2023-2024

USD Budget Profile



NEWTON

PUBLIC SCHOOLS

Order of Contents

- Budget General Information (characteristics of district)
- Supplemental Information for Tables in *Summary of Expenditures*
- KSDE Website Information Available
- Summary of Expenditures (Sumexpen.xlsx)

2023-2024 Budget General Information

USD #: 373

Introduction

Newton Unified School District 373 serves approximately 3,000 Pre-Kindergarten through 12th grade students in Harvey County. District attendance centers include an early education center, four elementary schools, a 5/6 grade center, one middle school one alternative school (7-12) and on high school. Newton USD 373 works cooperatively with St. Mary's School to provide art, music and physical education, as well as media services, instructional support for English Language Learners and special education students, and reading support services. USD 373 is the sponsoring district for the Harvey County Special Education Cooperative, which serves over 900 special needs students in Newton, Halstead and Hesston. Some students receive educational services at Prairie View through contracted services.

Board Members

Mallory Morton, President
Melissa Schreiber, Vice President
Luke Edwards
Brenna Haines

Andy Ortiz
Dayna Steinmetz
Matt Treaster

Board members may be contacted via email through the [district website](#).

Key Staff

Superintendent:	Fred Van Ranken
Assistant Superintendent:	Sheila Wendling
Board Clerk:	Joni Jantz
Director of Business Services: & Human Resources	Jane Nichols
Director of Special Education:	Reagan Seidl
Director of Technology:	Brenda Lampman Thompson

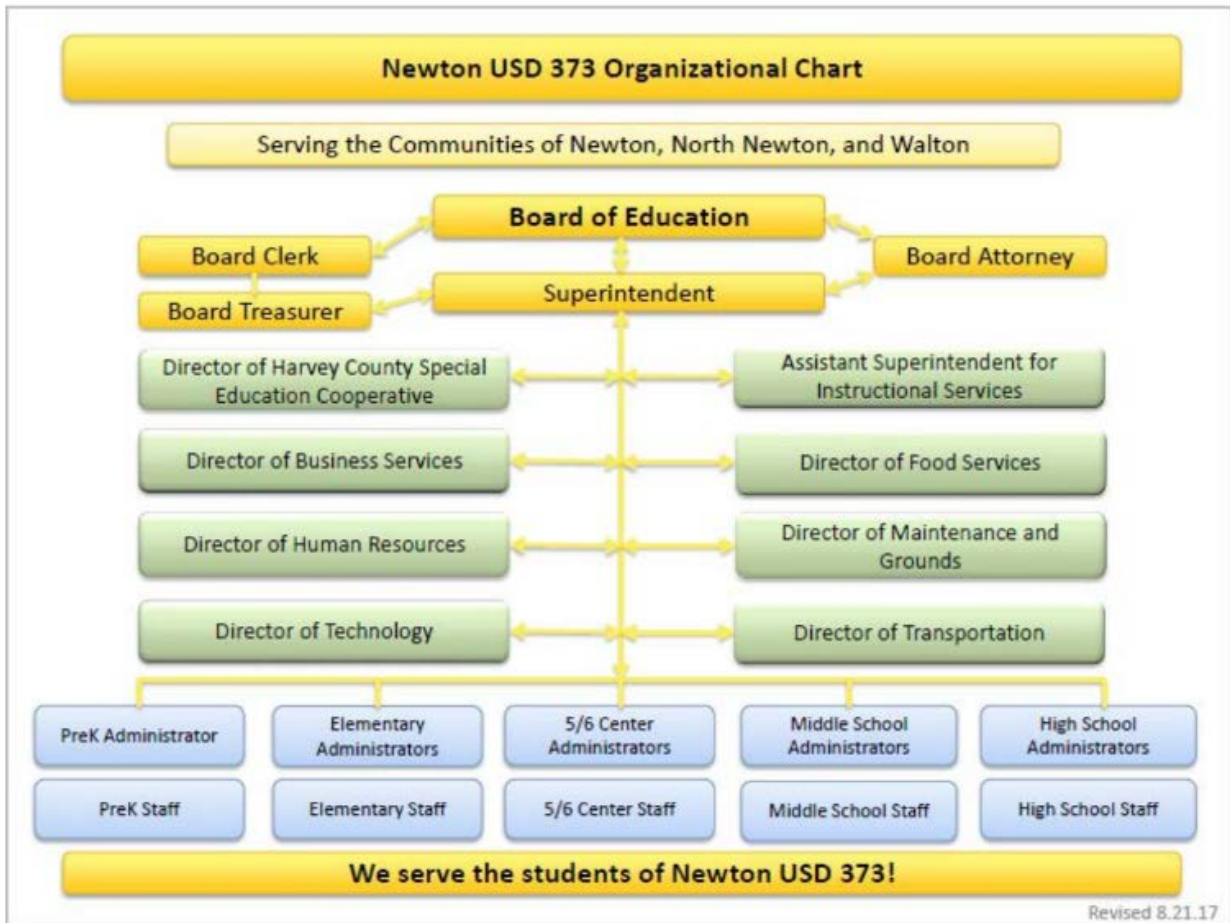
Newton USD Mission

The mission of the Newton School Community is to prepare and empower our students to be contributing participants in a changing world.

USD 373 District Belief Statement

We believe that:

- The educational needs of each student must be met.
- The needs of students must drive decision-making.
- Education is an active partnership involving students, families, schools and community.
- Motivation, opportunity and effort are critical to success.
- High expectations foster quality performance.
- The right to education conveys both privilege and responsibility.



The District's Accomplishments and Challenges

Accomplishments:

- Newton High School interrelated special education teacher Brian Skinner names Kansas Teacher of the Year. Mr. Skinner represented USD 373 at the state and national level, even getting to visit the White House and meet the president and first lady.
- Athletic Director Brian Becker was named the Kansas Interscholastic Athletic Administrators Association Athletic Director of the Year – Division 1.
- Slate Creek Elementary received the Kansas State Department of Education's "Challenge Award" for achievement and uncommon accomplishments based on Kansas Assessment results in math and reading, graduation rates, chronic absenteeism rates and the socio-economic status of that take the test.
- Two teachers (Laurie Behymer of Opportunity Academy and Chandler Ochoa, Spanish teacher at Newton High School) received KAKE's Golden Apple award.
- All 2022-23 elementary school locations were honored with "Distinct Launch" by Project Lead the Way.

Challenges:

- Staffing issues across the district with certified and classified positions.
- Declining enrollment which has led to decreased relative funding from the state.
- Lack of educational alternatives for the district, especially in grades 5-12.
- Need to further define curriculum and assessment in all curricular areas within the district to ensure consistency.

Supplemental Information for the Following Tables

1. Summary of Total Expenditures by Function (All Funds)
2. Summary of General Fund Expenditures by Function
3. Summary of Supplemental General Fund Expenditures by Function
4. Summary of General and Supplemental General Fund Expenditures by Function
5. Summary of Special Education Fund by Function
6. Instruction Expenditures (1000)
7. Student Support Expenditures (2100)
8. Instructional Support Expenditures (2200)
9. General Administration Expenditures (2300)
10. School Administration Expenditures (2400)
11. Central Services Expenditures (2500)
12. Operations and Maintenance Expenditures (2600)
13. Transportation Expenditures (2700)
14. Other Support Services Expenditures (2900)
15. Food Service Expenditures (3100)
16. Community Services Operations (3300)
17. Capital Improvements (4000)
18. Debt Services (5100)
19. Miscellaneous Information – Transfers (5200)
20. Miscellaneous Information Unencumbered Cash Balance by Fund
21. Reserve Funds Unencumbered Cash Balance
22. Other Information – Enrollment Information
23. Miscellaneous Information Mill Rates by Fund
24. Other Information – Assessed Valuation and Bonded Indebtedness

Note: FTE is the audited enrollment 9/20 and 2/20 (if applicable) and estimated for the budget year, which includes preschool-aged at-risk and virtual enrollment. Enrollment does not include non-funded preschool. Beginning 2017-18, full-day Kindergarten is 1.0 FTE. This information is used for calculating Amount Per Pupil for Sumexpen.xlsx and Budget At A Glance (BAG).

KSDE Website Information Available

K-12 Statistics (Building, District or State Totals) Report Generator:

https://datacentral.ksde.org/report_gen.aspx

- Attendance / Enrollment Reports
- Staff Reports
- Graduates / Dropouts Reports
- Crime / Violence Reports

School Finance Reports (Data Central) website below:

<https://datacentral.ksde.org/default.aspx>

- Assessed Valuation
- Cash Balances
- Headcount Enrollment
- Mill Levies
- Personnel (Certified/Non-Certified)
- Salary Reports

Kansas Building Report Card website below:

<http://ksreportcard.ksde.org/>

- Attendance Rate
- Graduation Rate
- Dropout Rate
- School Violence
- Assessments
 - Reading
 - Mathematics
 - Writing
- Graduates Passing Adv. Science Courses
- Graduates Passing Adv. Math Courses

Accountability Reports website below:

<https://datacentral.ksde.org/accountability.aspx>

- Performance Accountability Reports
- Financial Accountability Reports
- Longitudinal Achievement Reports