

DWG: F:\projects\015-1955-d\40-design\AutoCAD\final plans\Sheets\TLCM\Final Plans\Network Extension Cover.dwg  
DATE: Sep 21, 2023 7:07am XREFS: USER: jflickner



NOT TO SCALE

olson

7301 West 133rd Street, Suite 200  
Overland Park, KS 66213-4750  
TEL 913.381.1170  
FAX 913.381.1174  
www.disson.com


**E Stamp & Approval**  
CLARENCE R. GASTINEAU  
MO. NO. PE-2008025192

COVER SHEET I	
SUPPORT SERVICES NORTH RING NETWORK EXTENSION	
PARKVILLE, MO	2023

Drawn by: \_\_\_\_\_ SPM  
 Checked by: \_\_\_\_\_ DAH  
 Approved by: \_\_\_\_\_ CRG  
 Project no.: \_\_\_\_\_ project no.: \_\_\_\_\_  
 Drawing no.: \_\_\_\_\_  
 Date: 9/21/2023

SHEET  
1 OF 35

### LEGEND-KEY

	UTILITY POLE		GAS
	UTILITY MANHOLE		WATER
	UTILITY HANDHOLE		TELEPHONE
	TELEPHONE PED - CROSS BOX		ELECTRIC
	EXISTING MANHOLE		SANITARY SEWER (SEW)
	EXISTING HANDHOLE		STORM SEWER
	EXISTING COIL		FENCE
	EXISTING AERIAL COIL		CABLE TV
	EXISTING DOWN GUY		STEAM
	EXISTING SPLICE POINT		OIL
	TREE		UNKNOWN UTILITY
	PROPOSED MANHOLE		RIGHT OF WAY
	PROPOSED HANDHOLE		EDGE OF PAVEMENT
	PROPOSED COIL		UTILITY EASEMENT
	PROPOSED AERIAL COIL		MODOT UTILITY CORRIDOR
	PROPOSED DOWN GUY		EXISTING CONDUIT
	PROPOSED SPLICE POINT		EXISTING AERIAL FIBER
	PROPOSED FIBER DISTRIBUTION PANEL		EXISTING STRAND
	PROPOSED BORE PIT		PROPOSED CONDUIT
	PROPOSED PULL BOX		PROPOSED AERIAL FIBER
R/L	PROPOSED RUNNING LINE		PROPOSED STRAND
F/L	FLOW LINE		
FOC	FIBER OPTIC CABLE		
EOP	EDGE OF PAVEMENT		
	CUT & RESTORE CONC./ASPH.		
	INLET		
	INLET GRATE		

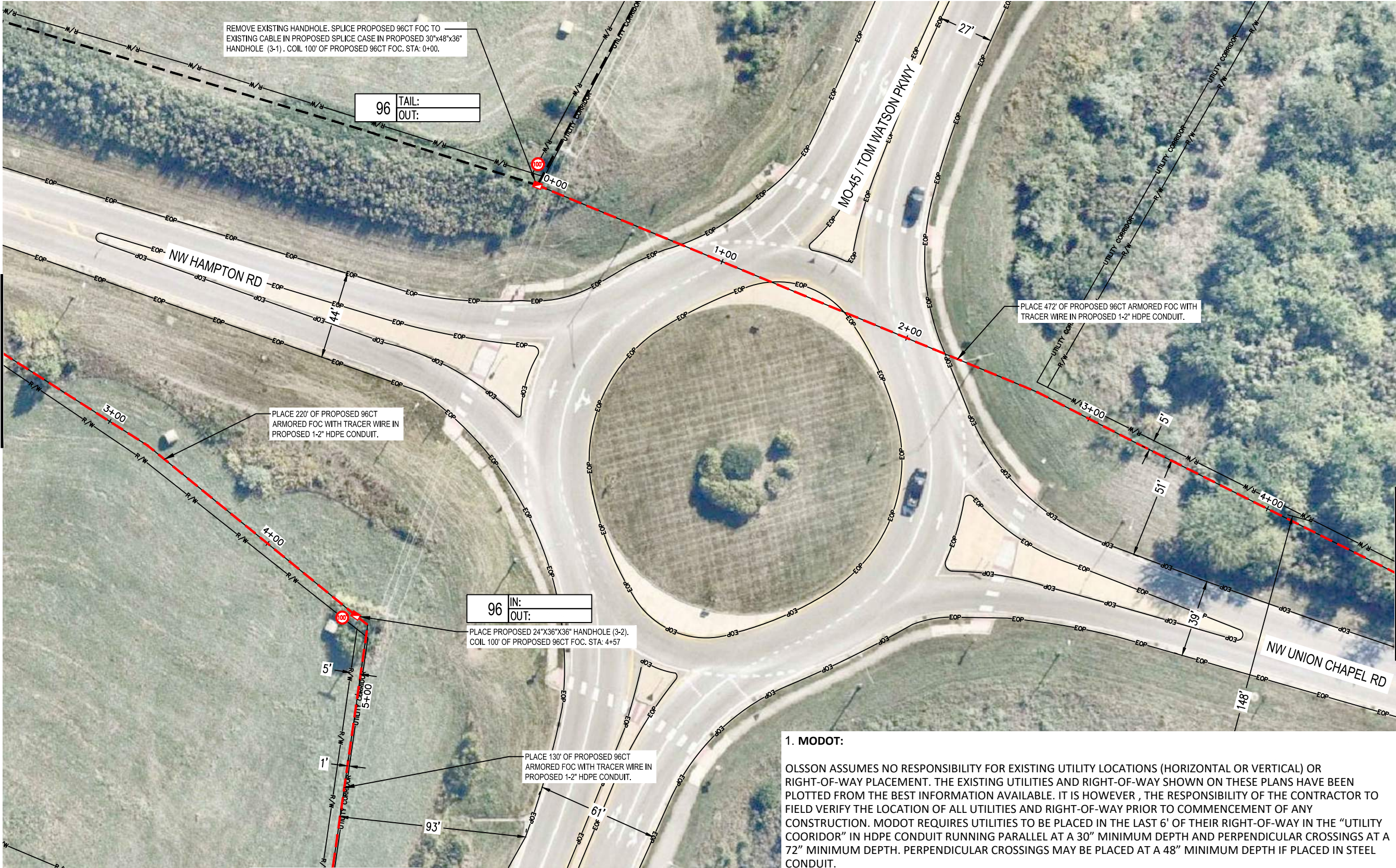
1. CONTRACTOR MUST OBTAIN LOCATES PRIOR TO ANY TYPE OF EXCAVATION.
2. CONTRACTOR IS RESPONSIBLE FOR OBTAINING THE NECESSARY REQUIRED PERMITS PERTAINING TO ALL ASPECTS OF THE PROJECT AND MUST HAVE THE APPROPRIATE PERMITS AT THE JOB SITE.
3. ALL CABLE WILL BE PLACED AT STANDARD MINIMUM DEPTH OF 36" IN UNPAVED AREAS AND 48" MINIMUM BELOW STREETS AT ALL TIMES, UNLESS OTHERWISE NOTED IN THE PLANS.
4. ANY LANDSCAPING WILL BE REPLACED TO EQUAL OR BETTER THAN THAT WHICH EXISTED PRIOR TO WORK.
5. PROJECT SITE WILL BE PROPERLY SECURED PRIOR TO THE END OF EACH DAY.
6. ALL WORK IS TO BE IN ACCORDANCE WITH AUTHORITIES HAVING JURISDICTION IN THE WORK ZONE.
7. CONTRACTORS ARE ADVISED TO CONTACT PHSD FOR ANY ADDITIONAL INFORMATION OR CLARIFICATION CONCERNING SCOPE OF WORK OR THE REQUIREMENTS NECESSARY FOR PROJECT COMPLETION.
8. ANY FIELD ADJUSTMENTS TO THE PROPOSED PLAN MUST BE APPROVED BY AN APPROPRIATE PHSD REPRESENTATIVE.
9. BEFORE CONSTRUCTION BEGINS, CONTRACTOR SHALL TAKE THE APPROPRIATE PRECAUTIONS TO AVOID ANY POTENTIAL OBSTRUCTIONS PRIOR TO PROCEEDING WITH WORK.
10. OLSSON ASSUMES NO RESPONSIBILITY FOR EXISTING UTILITY LOCATIONS (HORIZONTAL OR VERTICAL) OR RIGHT-OF-WAY LOCATION. THE EXISTING UTILITIES AND RIGHT-OF-WAY SHOWN ON THESE PLANS HAVE BEEN PLOTTED FROM THE BEST INFORMATION AVAILABLE. IT IS HOWEVER, THE RESPONSIBILITY OF THE CONTRACTOR TO FIELD VERIFY THE LOCATION OF ALL UTILITIES AND RIGHT-OF-WAY PRIOR TO COMMENCEMENT OF ANY CONSTRUCTION.
11. MODOT: OLSSON ASSUMES NO RESPONSIBILITY FOR EXISTING UTILITY LOCATIONS (HORIZONTAL OR VERTICAL) OR RIGHT-OF-WAY PLACEMENT. THE EXISTING UTILITIES AND RIGHT-OF-WAY SHOWN ON THESE PLANS HAVE BEEN PLOTTED FROM THE BEST INFORMATION AVAILABLE. IT IS HOWEVER, THE RESPONSIBILITY OF THE CONTRACTOR TO FIELD VERIFY THE LOCATION OF ALL UTILITIES AND RIGHT-OF-WAY PRIOR TO COMMENCEMENT OF ANY CONSTRUCTION. MODOT REQUIRES UTILITIES TO BE PLACED IN THE LAST 6' OF THEIR RIGHT-OF-WAY IN THE "UTILITY COORIDOR" IN HDPE CONDUIT RUNNING PARALLEL AT A 30" MINIMUM DEPTH AND PERPENDICULAR CROSSINGS AT A 72" MINIMUM DEPTH. PERPENDICULAR CROSSINGS MAY BE PLACED AT A 48" MINIMUM DEPTH IF PLACED IN STEEL CONDUIT.





DWG: F:\projects\015-1955-d\40-design\AutoCAD\final plans\Network Extension Final 1.dwg USER: jflickner  
DATE: Sep 21, 2023 7:08am XREFS: Alignment Sheets NetExt\_Base\_3 D15-1955\_MO\_GISMS S-Route Alignment N-Route Alignment D15-1955\_NetExt\_ROW

MATCH TO SHEET 13

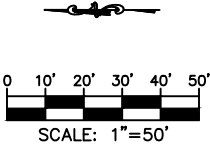


MATCH TO SHEET 14

SHEET QUANTITIES			
ITEM	ITEM DESCRIPTION	UNITS	QUANTITY
1.	SUPPLY & INSTALL 1-2" HDPE DUCT	LF	822
2.	SUPPLY & INSTALL TRACER WIRE	LF	822
3.	INSTALL 96CT ARMORED FIBER OPTIC CABLE - UNDERGROUND	LF	1022
4.	SUPPLY & INSTALL UNDERGROUND SPLICE ENCLOSURE	EACH	1
5.	SUPPLY & INSTALL 30"X48"X36" HANDHOLE	EACH	1
6.	SUPPLY & INSTALL 24"X36"X36" HANDHOLE	EACH	1

1. MODOT:

OLSSON ASSUMES NO RESPONSIBILITY FOR EXISTING UTILITY LOCATIONS (HORIZONTAL OR VERTICAL) OR RIGHT-OF-WAY PLACEMENT. THE EXISTING UTILITIES AND RIGHT-OF-WAY SHOWN ON THESE PLANS HAVE BEEN PLOTTED FROM THE BEST INFORMATION AVAILABLE. IT IS HOWEVER, THE RESPONSIBILITY OF THE CONTRACTOR TO FIELD VERIFY THE LOCATION OF ALL UTILITIES AND RIGHT-OF-WAY PRIOR TO COMMENCEMENT OF ANY CONSTRUCTION. MODOT REQUIRES UTILITIES TO BE PLACED IN THE LAST 6' OF THEIR RIGHT-OF-WAY IN THE "UTILITY COORIDOR" IN HDPE CONDUIT RUNNING PARALLEL AT A 30" MINIMUM DEPTH AND PERPENDICULAR CROSSINGS AT A 72" MINIMUM DEPTH. PERPENDICULAR CROSSINGS MAY BE PLACED AT A 48" MINIMUM DEPTH IF PLACED IN STEEL CONDUIT.



MATCH TO SHEET 4

7301 West 133rd Street, Suite 200  
Overland Park, KS 66213-4750  
TEL 913.381.1170 www.olsson.com

PE Stamp & Approval

REV. NO.	DATE	REVISIONS DESCRIPTION

PROJECT SHEET

SUPPORT SERVICES NORTH RING NETWORK EXTENSION

PARKVILLE, MO

drawn by: SPM  
checked by: JMC  
approved by: ENG  
project no.:  
drawing no.:

SHEET

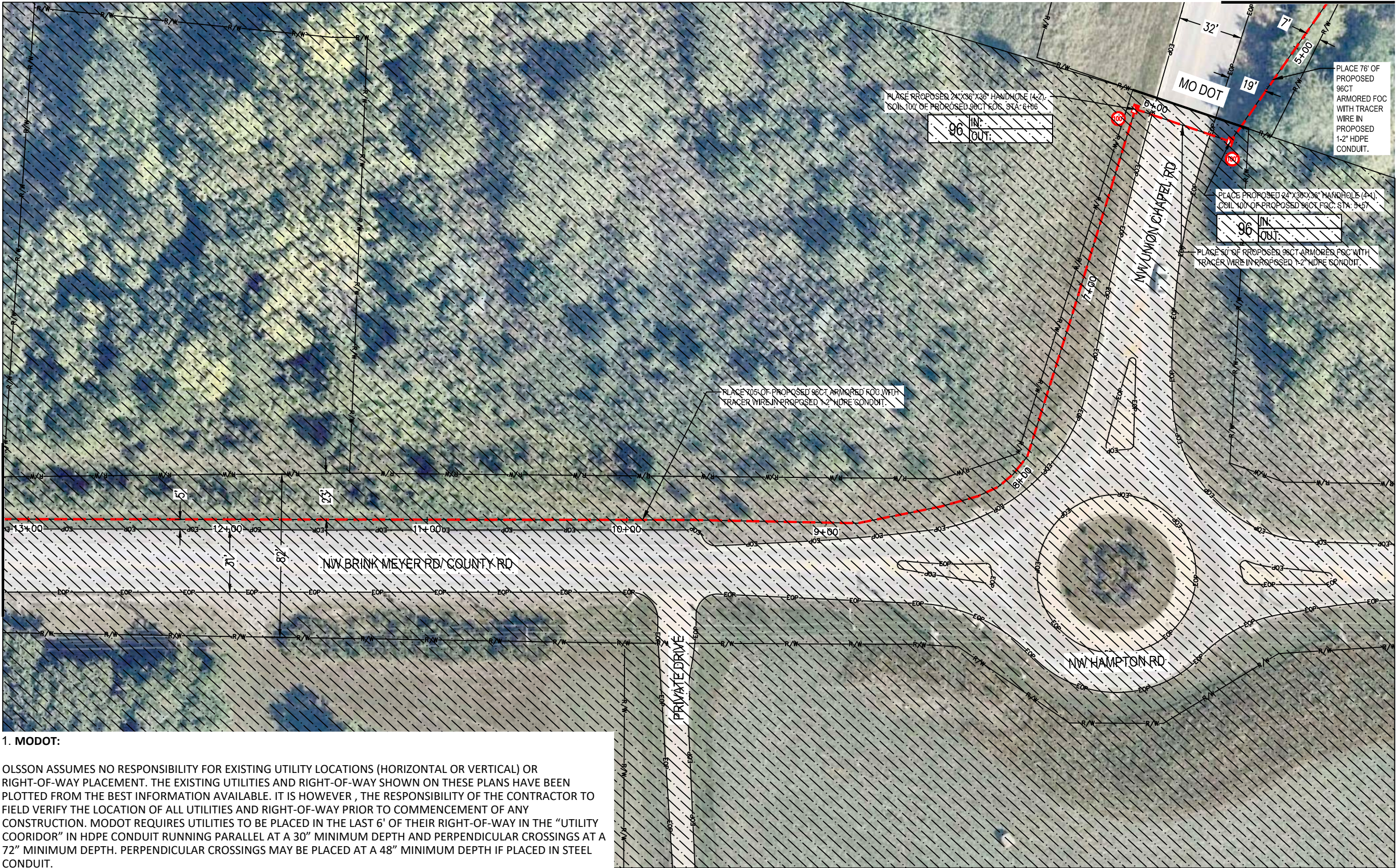
3 of 35

2023

REVISIONS



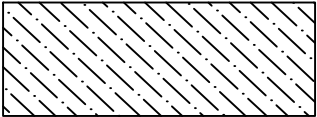
MATCH TO SHEET 5



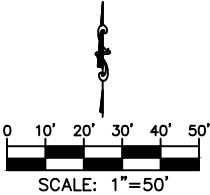
1. MODOT:

OLSSON ASSUMES NO RESPONSIBILITY FOR EXISTING UTILITY LOCATIONS (HORIZONTAL OR VERTICAL) OR RIGHT-OF-WAY PLACEMENT. THE EXISTING UTILITIES AND RIGHT-OF-WAY SHOWN ON THESE PLANS HAVE BEEN PLOTTED FROM THE BEST INFORMATION AVAILABLE. IT IS HOWEVER, THE RESPONSIBILITY OF THE CONTRACTOR TO FIELD VERIFY THE LOCATION OF ALL UTILITIES AND RIGHT-OF-WAY PRIOR TO COMMENCEMENT OF ANY CONSTRUCTION. MODOT REQUIRES UTILITIES TO BE PLACED IN THE LAST 6' OF THEIR RIGHT-OF-WAY IN THE "UTILITY COORIDOR" IN HDPE CONDUIT RUNNING PARALLEL AT A 30" MINIMUM DEPTH AND PERPENDICULAR CROSSINGS AT A 72" MINIMUM DEPTH. PERPENDICULAR CROSSINGS MAY BE PLACED AT A 48" MINIMUM DEPTH IF PLACED IN STEEL CONDUIT.

SHEET QUANTITIES			
ITEM	ITEM DESCRIPTION	UNITS	QUANTITY
1.	SUPPLY & INSTALL 1-2" HDPE DUCT	LF	76
2.	SUPPLY & INSTALL TRACER WIRE	LF	76
3.	INSTALL 96CT ARMORED FIBER OPTIC CABLE - UNDERGROUND	LF	76



HATCH AREA IS PART OF UG PERMIT #1



PROJECT SHEET

SUPPORT SERVICES NORTH RING NETWORK EXTENSION

PARKVILLE, MO

2023

REVISIONS

drawn by: CAS

checked by: JMC

approved by: ENG

project no.:

drawing no.:

SHEET

4 of 35

olsson

7301 West 133rd Street, Suite 200  
Overland Park, KS 66213-4750  
TEL 913.381.1170 www.olsson.com

PE Stamp & Approval

REVISIONS DESCRIPTION

DATE

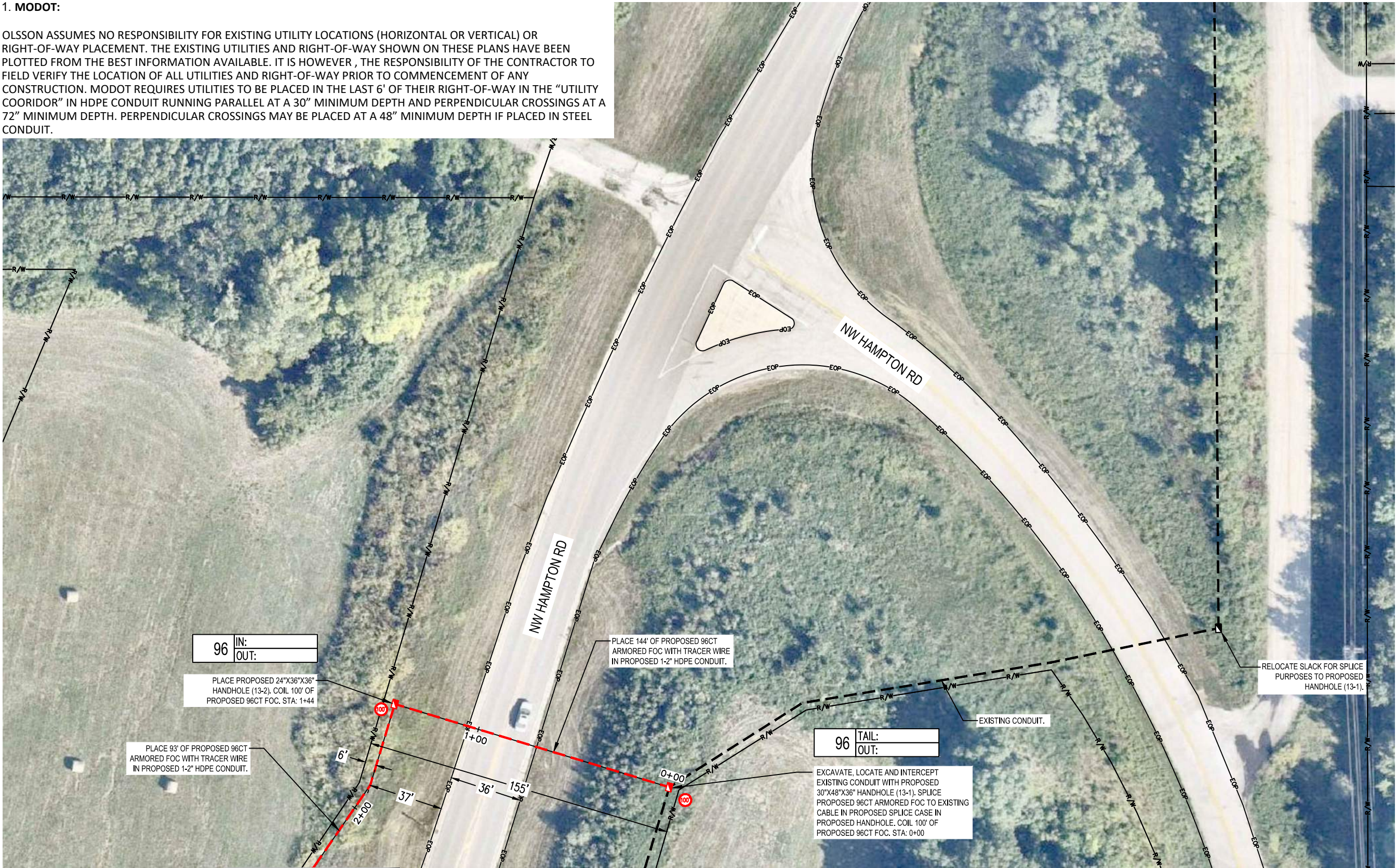
REV. NO.



DWG: F:\projects\015-1955-d\40-design\AutoCAD\final plans\Network Extension Final 2.dwg      USER: jflickner      NetExt\_Base\_2      D15-1955\_NetExt\_ROW  
DATE: Sep 21, 2023 7:08am      XREFs: Alignment Sheets      NetExt\_Base\_1      D15-1955\_MO\_GISMS      N-Route Alignment      S-Route Alignment

1. MODOT:

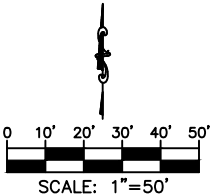
OLSSON ASSUMES NO RESPONSIBILITY FOR EXISTING UTILITY LOCATIONS (HORIZONTAL OR VERTICAL) OR RIGHT-OF-WAY PLACEMENT. THE EXISTING UTILITIES AND RIGHT-OF-WAY SHOWN ON THESE PLANS HAVE BEEN PLOTTED FROM THE BEST INFORMATION AVAILABLE. IT IS HOWEVER , THE RESPONSIBILITY OF THE CONTRACTOR TO FIELD VERIFY THE LOCATION OF ALL UTILITIES AND RIGHT-OF-WAY PRIOR TO COMMENCEMENT OF ANY CONSTRUCTION. MODOT REQUIRES UTILITIES TO BE PLACED IN THE LAST 6' OF THEIR RIGHT-OF-WAY IN THE "UTILITY COORIDOR" IN HDPE CONDUIT RUNNING PARALLEL AT A 30" MINIMUM DEPTH AND PERPENDICULAR CROSSINGS AT A 72" MINIMUM DEPTH. PERPENDICULAR CROSSINGS MAY BE PLACED AT A 48" MINIMUM DEPTH IF PLACED IN STEEL CONDUIT.



MATCH TO SHEET 14

SHEET QUANTITIES

ITEM	ITEM DESCRIPTION	UNITS	QUANTITY
1.	SUPPLY & INSTALL 1-2" HDPE DUCT	LF	237
2.	SUPPLY & INSTALL TRACER WIRE	LF	237
3.	INSTALL 96CT ARMORED FIBER OPTIC CABLE - UNDERGROUND	LF	437
4.	SUPPLY & INSTALL 30"X48"X36" HANDHOLE	EACH	1
5.	SUPPLY & INSTALL 24"X36"X36" HANDHOLE	EACH	1



olsson

7301 West 133rd Street, Suite 200  
Overland Park, KS 66213-4760  
TEL 913.381.1170      www.olsson.com

PE Stamp & Approval

REV.

DATE

PROJECT SHEET

SUPPORT SERVICES NORTH RING  
NETWORK EXTENSION

2023

PARKVILLE, MO

REVISIONS

drawn by: CAS  
checked by: JMC  
approved by: ENG  
project no.:  
drawing no.:

SHEET

13 of 35







USER: jflickner S-

MATCH TO SHEET 16



SHEET QUANTITIES			
ITEM	ITEM DESCRIPTION	UNITS	QUANTITY
1.	SUPPLY & INSTALL 1.2" HDPE DUCT	LF	782
2.	SUPPLY & INSTALL TRACER WIRE	LF	782
3.	SUPPLY & INSTALL 24"X36"X36" HANDHOLE	EACH	1
4.	INSTALL 96CT ARMORED FIBER OPTIC CABLE - UNDERGROUND	LF	882

## 1. MODOT:

OLSSON ASSUMES NO RESPONSIBILITY FOR EXISTING UTILITY LOCATIONS (HORIZONTAL OR VERTICAL) OR RIGHT-OF-WAY PLACEMENT. THE EXISTING UTILITIES AND RIGHT-OF-WAY SHOWN ON THESE PLANS HAVE BEEN PLOTTED FROM THE BEST INFORMATION AVAILABLE. IT IS HOWEVER, THE RESPONSIBILITY OF THE CONTRACTOR TO FIELD VERIFY THE LOCATION OF ALL UTILITIES AND RIGHT-OF-WAY PRIOR TO COMMENCEMENT OF ANY CONSTRUCTION. MODOT REQUIRES UTILITIES TO BE PLACED IN THE LAST 6' OF THEIR RIGHT-OF-WAY IN THE "UTILITY COORDINOR" IN HDPE CONDUIT RUNNING PARALLEL AT A 30" MINIMUM DEPTH AND PERPENDICULAR CROSSINGS AT A 72" MINIMUM DEPTH. PERPENDICULAR CROSSINGS MAY BE PLACED AT A 48" MINIMUM DEPTH IF PLACED IN STEEL CONDUIT.

MATCH TO SHEET 14

# PROJECT SHEET

# SUPPORT SERVICES NORTH RING NETWORK EXTENSION

PARKVILLE, MO

[illegible]

## REVISIONS

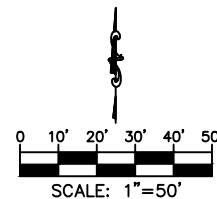
PE Stamp &amp; Approval

**olson**

7301 West 133rd Street, Suite 200  
Overland Park, KS 66213-4750  
TEL 913.381.1170 [www.olsson.com](http://www.olsson.com)

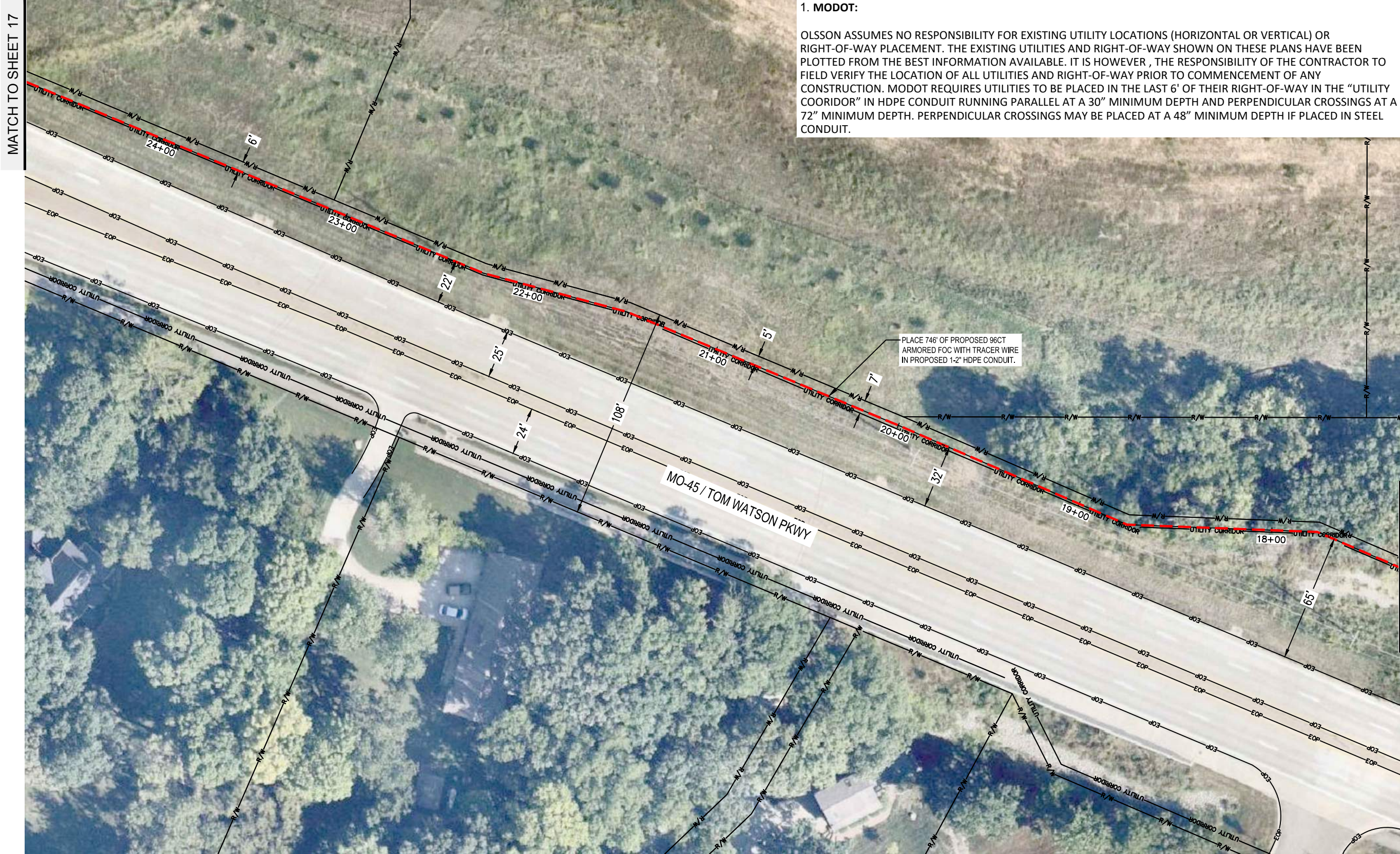


Know what's **below**.  
**Call** before you dig.





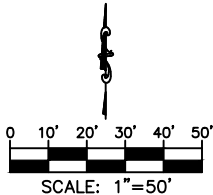
DWG: F:\projects\015-1955-d\40-design\AutoCAD\final plans\Network Extension Final 2.dwg USER: jflickner  
DATE: Sep 21, 2023 7:08am XREFs: Alignment Sheets NetExt\_Base\_1 D15-1955\_MO\_GISMS N-Route Alignment S-Route Alignment NetExt\_Base\_2 D15-1955\_NetExt\_ROW



1. MODOT:

OLSSON ASSUMES NO RESPONSIBILITY FOR EXISTING UTILITY LOCATIONS (HORIZONTAL OR VERTICAL) OR RIGHT-OF-WAY PLACEMENT. THE EXISTING UTILITIES AND RIGHT-OF-WAY SHOWN ON THESE PLANS HAVE BEEN PLOTTED FROM THE BEST INFORMATION AVAILABLE. IT IS HOWEVER , THE RESPONSIBILITY OF THE CONTRACTOR TO FIELD VERIFY THE LOCATION OF ALL UTILITIES AND RIGHT-OF-WAY PRIOR TO COMMENCEMENT OF ANY CONSTRUCTION. MODOT REQUIRES UTILITIES TO BE PLACED IN THE LAST 6' OF THEIR RIGHT-OF-WAY IN THE "UTILITY COORIDOR" IN HDPE CONDUIT RUNNING PARALLEL AT A 30" MINIMUM DEPTH AND PERPENDICULAR CROSSINGS AT A 72" MINIMUM DEPTH. PERPENDICULAR CROSSINGS MAY BE PLACED AT A 48" MINIMUM DEPTH IF PLACED IN STEEL CONDUIT.

SHEET QUANTITIES			
ITEM	ITEM DESCRIPTION	UNITS	QUANTITY
1.	SUPPLY & INSTALL 1-2" HDPE DUCT	LF	746
2.	SUPPLY & INSTALL TRACER WIRE	LF	746
3.	INSTALL 96CT ARMORED FIBER OPTIC CABLE - UNDERGROUND	LF	746



MATCH TO SHEET 15

MATCH TO SHEET 17

7301 West 133rd Street, Suite 200  
Overland Park, KS 66213-4760  
TEL 913.381.1170 www.olsson.com

PE Stamp & Approval				
PROJECT SHEET	SUPPORT SERVICES NORTH RING NETWORK EXTENSION	REV.	NO.	
			DATE	
			REVISIONS DESCRIPTION	
PARKVILLE, MO		2023	REVISIONS	
SHEET		16 of	35	

drawn by: CAS

checked by: JMC

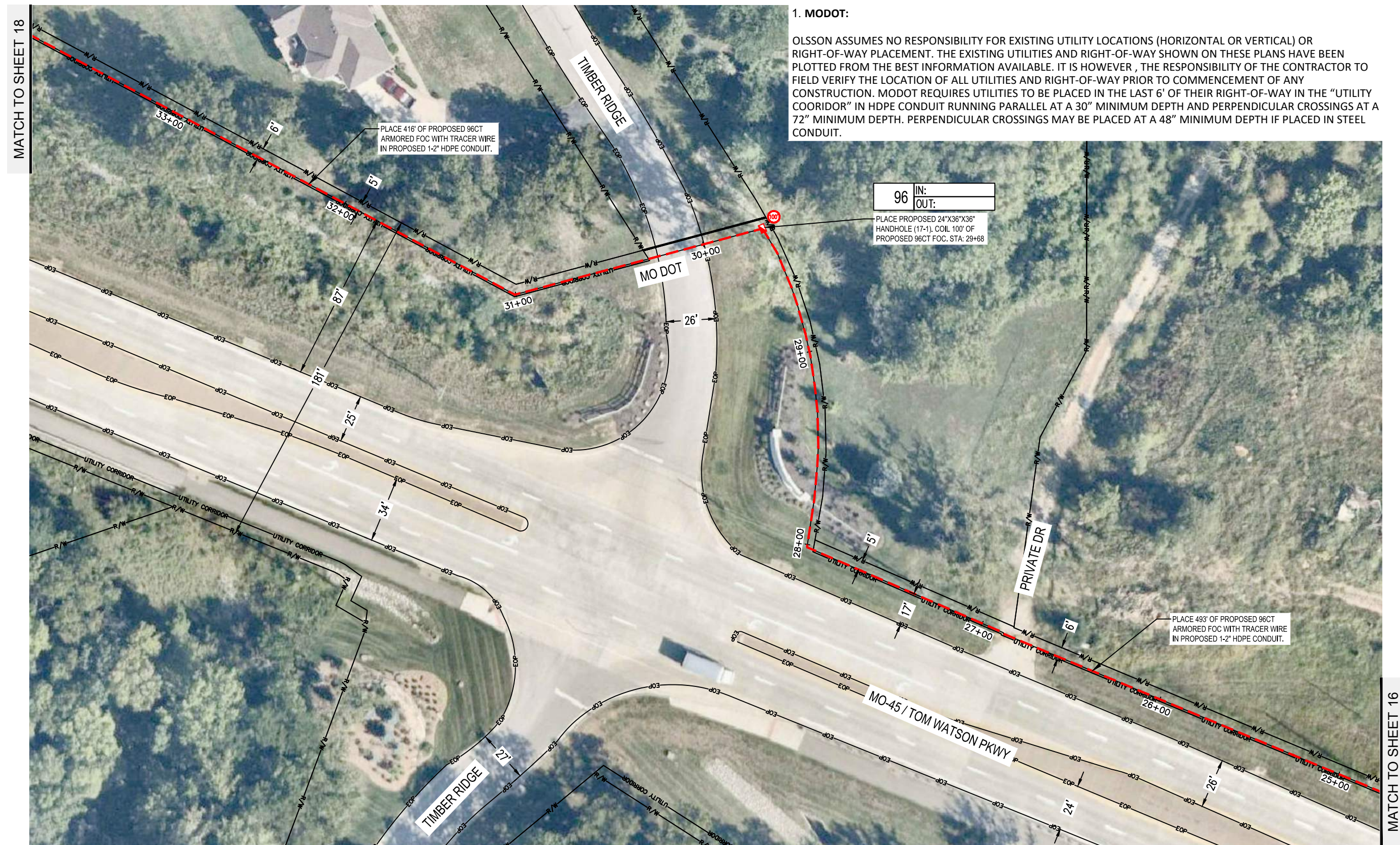
approved by: ENG

project no.:

drawing no.:



DWG: F:\projects\015-1955-d\40-design\AutoCAD\final plans\Sheets\TLCM\Final Plans\Network Extension Final 2.dwg USER: jflckner  
DATE: Sep 21, 2023 7:08am XREFS: Alignment Sheets NetExt\_Base\_1 D15-1955\_MO\_GISMS N-Route Alignment S-Route Alignment NetExt\_Base\_2 D15-1955\_NetExt\_ROW



SHEET QUANTITIES			
ITEM	ITEM DESCRIPTION	UNITS	QUANTITY
1.	SUPPLY & INSTALL 1-2" HDPE DUCT	LF	909
2.	SUPPLY & INSTALL TRACER WIRE	LF	909
3.	SUPPLY & INSTALL 24"X36"X36" HANDHOLE	EACH	1
4.	INSTALL 96CT ARMORED FIBER OPTIC CABLE - UNDERGROUND	LF	1009

### 1. MODOT:

OLSSON ASSUMES NO RESPONSIBILITY FOR EXISTING UTILITY LOCATIONS (HORIZONTAL OR VERTICAL) OR RIGHT-OF-WAY PLACEMENT. THE EXISTING UTILITIES AND RIGHT-OF-WAY SHOWN ON THESE PLANS HAVE BEEN PLOTTED FROM THE BEST INFORMATION AVAILABLE. IT IS HOWEVER, THE RESPONSIBILITY OF THE CONTRACTOR TO FIELD VERIFY THE LOCATION OF ALL UTILITIES AND RIGHT-OF-WAY PRIOR TO COMMENCEMENT OF ANY CONSTRUCTION. MODOT REQUIRES UTILITIES TO BE PLACED IN THE LAST 6' OF THEIR RIGHT-OF-WAY IN THE "UTILITY COORIDOR" IN HDPE CONDUIT RUNNING PARALLEL AT A 30" MINIMUM DEPTH AND PERPENDICULAR CROSSINGS AT A 72" MINIMUM DEPTH. PERPENDICULAR CROSSINGS MAY BE PLACED AT A 48" MINIMUM DEPTH IF PLACED IN STEEL CONDUIT.

**olsson**

7301 West 133rd Street, Suite 200  
Overland Park, KS 66213-4750  
TEL 913.381.1170 [www.dlsson.com](http://www.dlsson.com)

PE Stamp &amp; Approval

[illegible]

PROJECT SHEET

# SUPPORT SERVICES NORTH RING NETWORK EXTENSION

PARKVILLE, MO

DEVISIONS

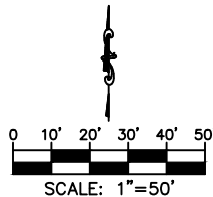
2023

drawn by: CAS  
checked by: JMC  
approved by: ENG  
project no.: \_\_\_\_\_  
drawing no.: \_\_\_\_\_

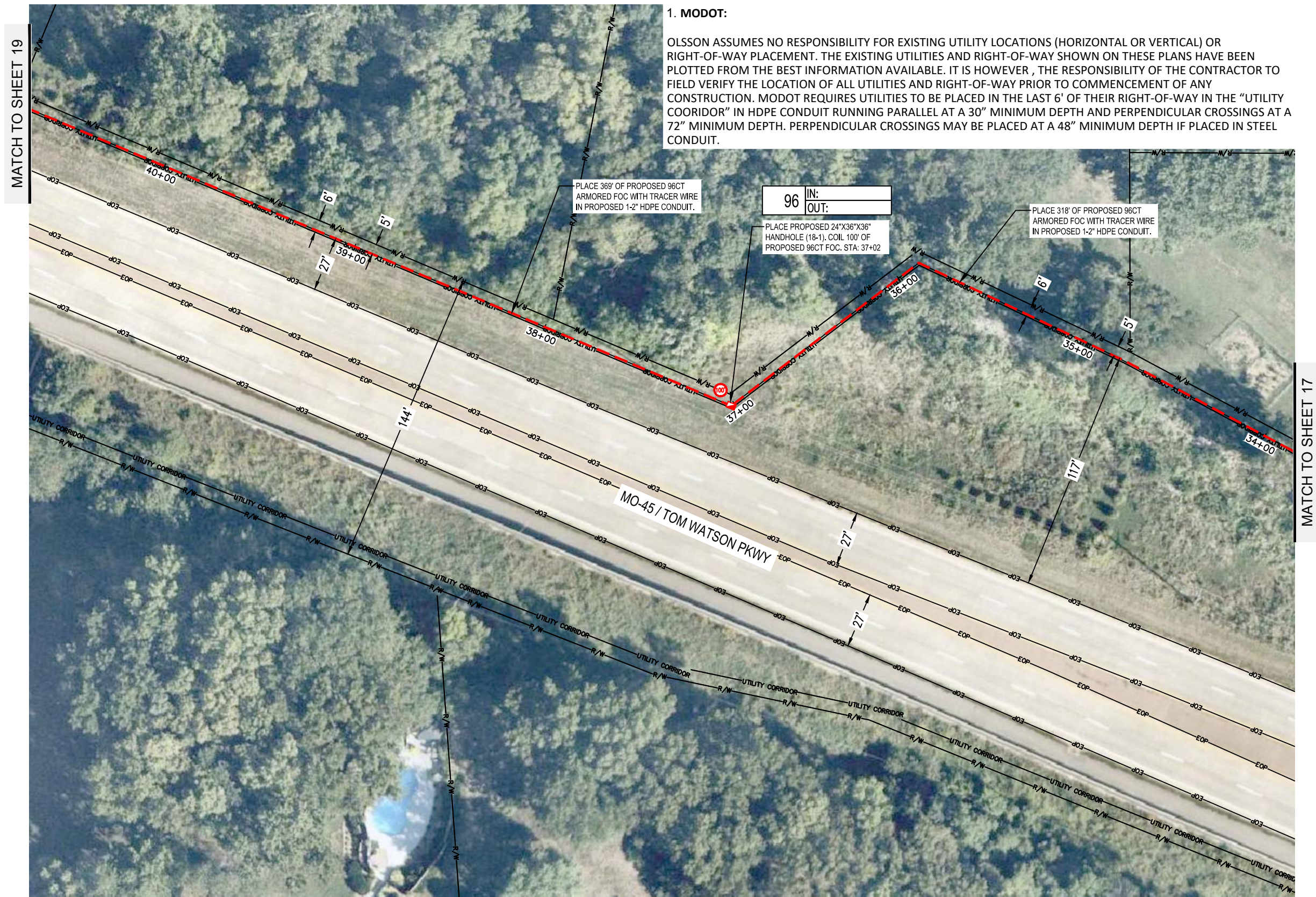
SHEET  
7 of



Know what's **below**.  
**Call** before you dig.







SHEET QUANTITIES			
ITEM	ITEM DESCRIPTION	UNITS	QUANTITY
1.	SUPPLY & INSTALL 1-2" HDPE DUCT	LF	687
2.	SUPPLY & INSTALL TRACER WIRE	LF	687
3.	SUPPLY & INSTALL 24"X36"X36" HANDHOLE	EACH	1
4.	INSTALL 96CT ARMORED FIBER OPTIC CABLE - UNDERGROUND	LF	787

### 1. MODOT:

OLSSON ASSUMES NO RESPONSIBILITY FOR EXISTING UTILITY LOCATIONS (HORIZONTAL OR VERTICAL) OR RIGHT-OF-WAY PLACEMENT. THE EXISTING UTILITIES AND RIGHT-OF-WAY SHOWN ON THESE PLANS HAVE BEEN PLOTTED FROM THE BEST INFORMATION AVAILABLE. IT IS HOWEVER, THE RESPONSIBILITY OF THE CONTRACTOR TO FIELD VERIFY THE LOCATION OF ALL UTILITIES AND RIGHT-OF-WAY PRIOR TO COMMENCEMENT OF ANY CONSTRUCTION. MODOT REQUIRES UTILITIES TO BE PLACED IN THE LAST 6' OF THEIR RIGHT-OF-WAY IN THE "UTILITY CORRIDOR" IN HDPE CONDUIT RUNNING PARALLEL AT A 30" MINIMUM DEPTH AND PERPENDICULAR CROSSINGS AT A 72" MINIMUM DEPTH. PERPENDICULAR CROSSINGS MAY BE PLACED AT A 48" MINIMUM DEPTH IF PLACED IN STEEL CONDUIT.

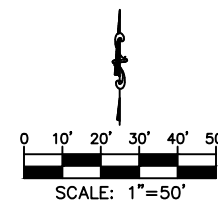
PLACE 369' OF PROPOSED 96CT  
ARMORED FOC WITH TRACER WIRE  
IN PROPOSED 1-2" HDPE CONDUIT.

96	IN:
	OUT:

PLACE PROPOSED 24"X36"X36"  
HANDHOLE (18-1). COIL 100' OF  
PROPOSED 96CT FOC. STA: 37+02

—PLACE 318' OF PROPOSED 96CT  
ARMORED FOC WITH TRACER WIRE  
IN PROPOSED 1-2" HDPE CONDUIT.

MATCH TO SHEET 17



**olsson**

7301 West 133rd Street, Suite 200  
Overland Park, KS 66213-4750  
TEL 913.381.1170 [www.dlsson.com](http://www.dlsson.com)

PE Stamp &amp; Approval

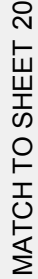
[illegible]

PROJECT SHEET	
SUPPORT SERVICES NORTH RING NETWORK EXTENSION	
PARKVILLE, MO	2023

drawn by: CAS  
checked by: JMC  
approved by: ENG  
project no.: \_\_\_\_\_  
drawing no.: \_\_\_\_\_

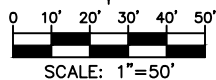
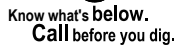
SHEET  
18 of 35





## SHEET QUANTITIES

OLSSON ASSUMES NO RESPONSIBILITY FOR EXISTING UTILITY LOCATIONS (HORIZONTAL OR VERTICAL) OR RIGHT-OF-WAY PLACEMENT. THE EXISTING UTILITIES AND RIGHT-OF-WAY SHOWN ON THESE PLANS HAVE BEEN PLOTTED FROM THE BEST INFORMATION AVAILABLE. IT IS HOWEVER, THE RESPONSIBILITY OF THE CONTRACTOR TO FIELD VERIFY THE LOCATION OF ALL UTILITIES AND RIGHT-OF-WAY PRIOR TO COMMENCEMENT OF ANY CONSTRUCTION. MODOT REQUIRES UTILITIES TO BE PLACED IN THE LAST 6' OF THEIR RIGHT-OF-WAY IN THE "UTILITY CORRIDOR" IN HDPE CONDUIT RUNNING PARALLEL AT A 30" MINIMUM DEPTH AND PERPENDICULAR CROSSINGS AT A 72" MINIMUM DEPTH. PERPENDICULAR CROSSINGS MAY BE PLACED AT A 48" MINIMUM DEPTH IF PLACED IN STEEL CONDUIT.



**MATCH TO SHEET 18**

# PROJECT SHEET

## SUPPORT SERVICES NORTH RING NETWORK EXTENSION

PARKVILLE, MO

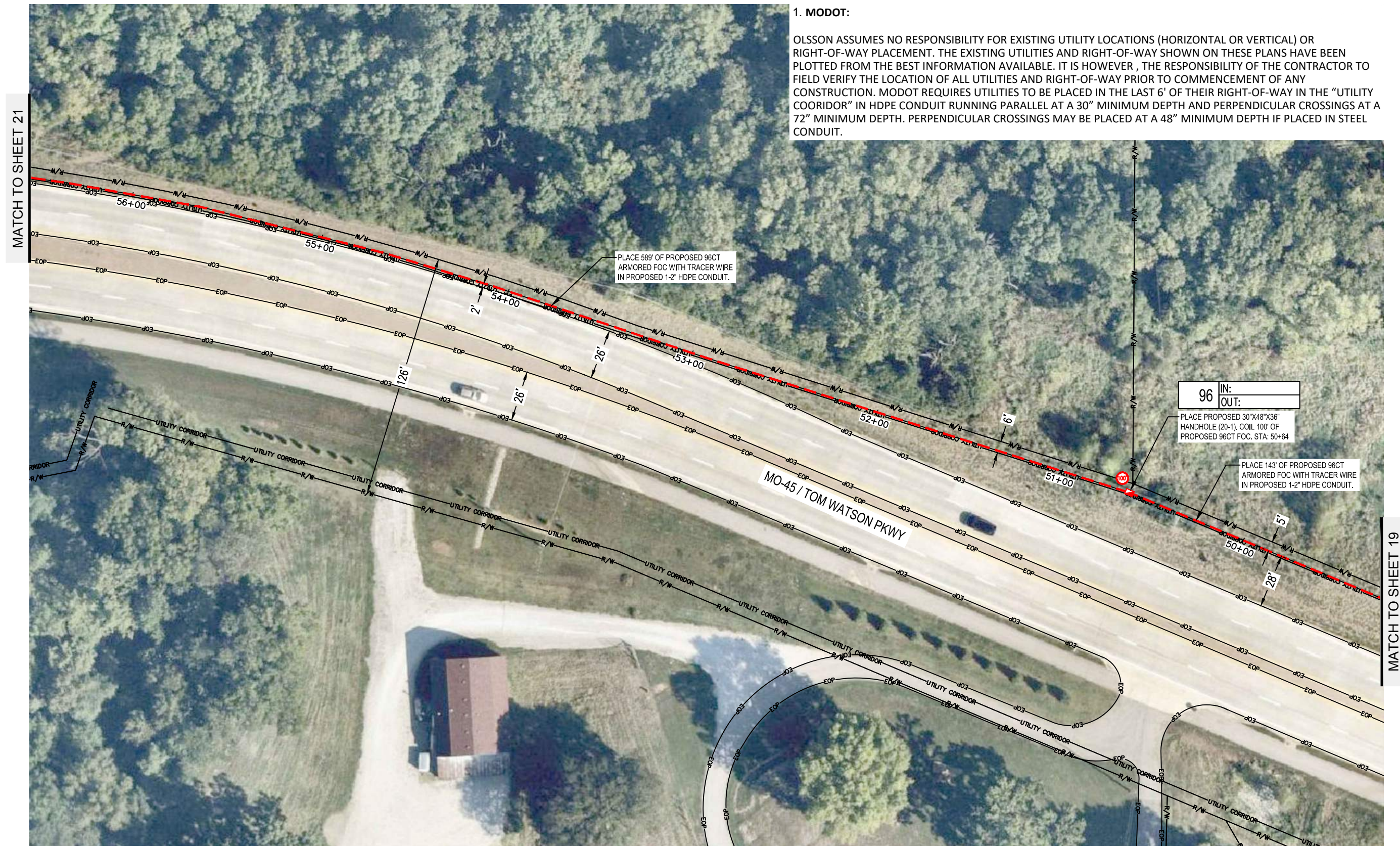
REVISIONS DESCRIPTION

PE Stamp &amp; Approval

oslo



DWG: F:\projects\015-1955-d\40-design\AutoCAD\final plans\Sheets\TLCM\Final Plans\Network Extension Final 2.dwg USER: jffickner  
DATE: Sep 21, 2023 7:08am XREFS: Alignment Sheets NetExt\_Base\_1 D15-1955\_WO\_GISMS N-Route Alignment S-Route Alignment NetExt\_Base\_2 D15-1955\_NetExt\_ROW



SHEET QUANTITIES			
ITEM	ITEM DESCRIPTION	UNITS	QUANTITY
1.	SUPPLY & INSTALL 1-2" HDPE DUCT	LF	732
2.	SUPPLY & INSTALL TRACER WIRE	LF	732
3.	SUPPLY & INSTALL 30"X48"X36" HANDHOLE	EACH	1
4.	INSTALL 96CT ARMORED FIBER OPTIC CABLE - UNDERGROUND	LF	832

## 1. MODOT:

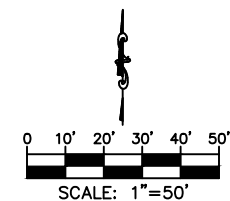
OLSSON ASSUMES NO RESPONSIBILITY FOR EXISTING UTILITY LOCATIONS (HORIZONTAL OR VERTICAL) OR RIGHT-OF-WAY PLACEMENT. THE EXISTING UTILITIES AND RIGHT-OF-WAY SHOWN ON THESE PLANS HAVE BEEN PLOTTED FROM THE BEST INFORMATION AVAILABLE. IT IS HOWEVER, THE RESPONSIBILITY OF THE CONTRACTOR TO FIELD VERIFY THE LOCATION OF ALL UTILITIES AND RIGHT-OF-WAY PRIOR TO COMMENCEMENT OF ANY CONSTRUCTION. MODOT REQUIRES UTILITIES TO BE PLACED IN THE LAST 6' OF THEIR RIGHT-OF-WAY IN THE "UTILITY CORRIDOR" IN HDPE CONDUIT RUNNING PARALLEL AT A 30" MINIMUM DEPTH AND PERPENDICULAR CROSSINGS AT A 72" MINIMUM DEPTH. PERPENDICULAR CROSSINGS MAY BE PLACED AT A 48" MINIMUM DEPTH IF PLACED IN STEEL CONDUIT.


96	IN:
	OUT:

— PLACE PROPOSED 30"X48"X36"  
HANDHOLE (20-1). COIL 100' OF  
PROPOSED 96CT FOC. STA: 50+64

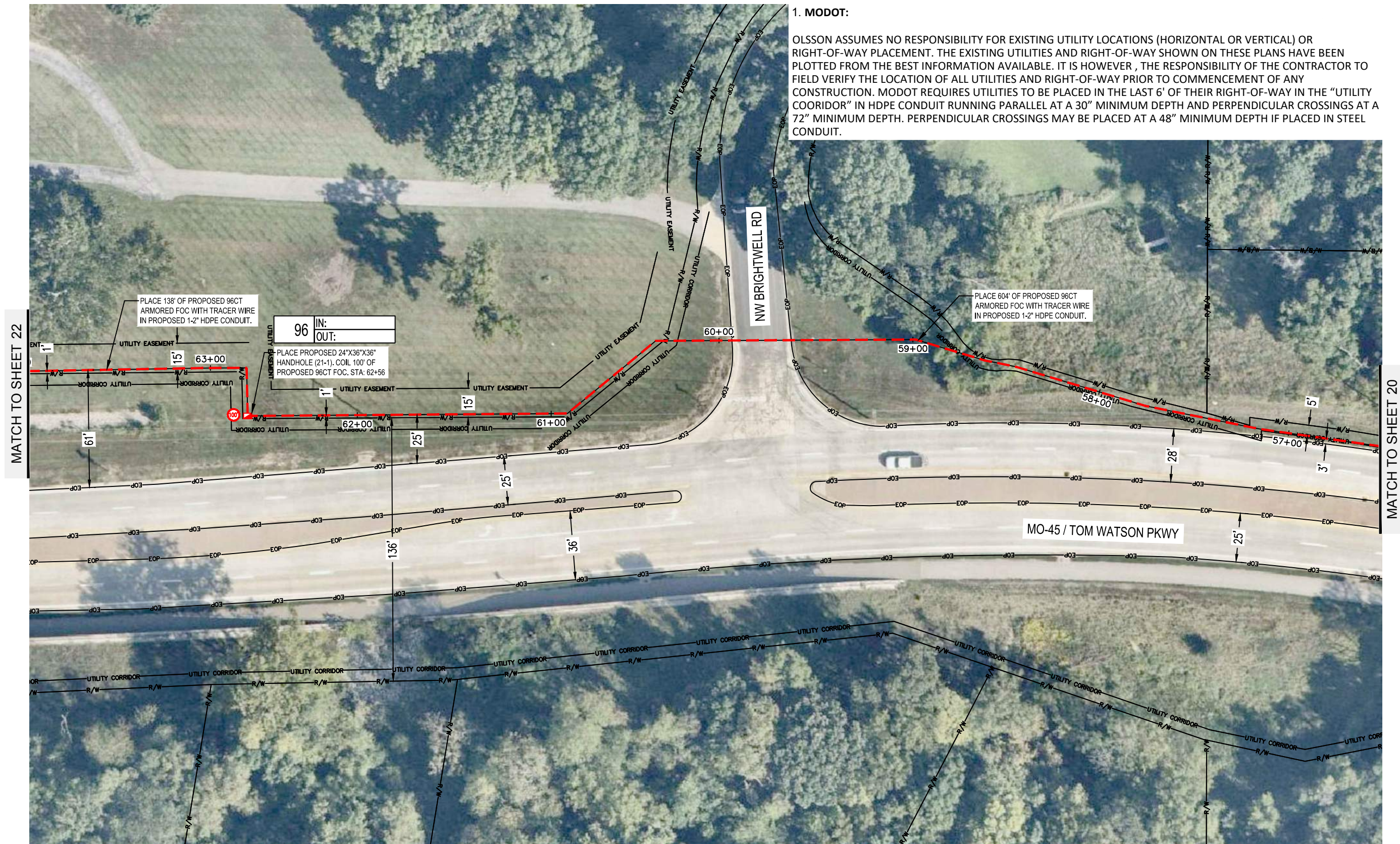
— PLACE 143' OF PROPOSED 96CT  
ARMORED FOC WITH TRACER WIRE  
IN PROPOSED 1-2" HDPE CONDUIT.

MATCH TO SHEET 19



<div style="text-align: right;">  </div>					
7301 West 133rd Street, Suite 200 Overland Park, KS 66213-4750 TEL 913.381.1170    www.olsson.com					
PE Stamp & Approval					
REV. NO.	DATE	REVISIONS DESCRIPTION			
		REVISIONS			
PROJECT SHEET					
SUPPORT SERVICES NORTH RING NETWORK EXTENSION					
PARKVILLE, MO			2023		
drawn by: _____ CAS checked by: _____ JMC approved by: _____ ENG project no.: _____ drawing no.: _____					
SHEET					
20 of 35					





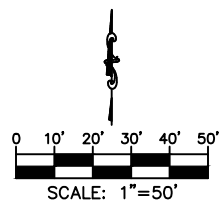
SHEET QUANTITIES			
ITEM	ITEM DESCRIPTION	UNITS	QUANTITY
1.	SUPPLY & INSTALL 1-2" HDPE DUCT	LF	742
2.	SUPPLY & INSTALL TRACER WIRE	LF	742
3.	SUPPLY & INSTALL 24"x36"x36" HANDHOLE	EACH	1
4.	INSTALL 96CT ARMORED FIBER OPTIC CABLE - UNDERGROUND	LF	842

### 1. MODOT:

OLSSON ASSUMES NO RESPONSIBILITY FOR EXISTING UTILITY LOCATIONS (HORIZONTAL OR VERTICAL) OR RIGHT-OF-WAY PLACEMENT. THE EXISTING UTILITIES AND RIGHT-OF-WAY SHOWN ON THESE PLANS HAVE BEEN PLOTTED FROM THE BEST INFORMATION AVAILABLE. IT IS HOWEVER, THE RESPONSIBILITY OF THE CONTRACTOR TO FIELD VERIFY THE LOCATION OF ALL UTILITIES AND RIGHT-OF-WAY PRIOR TO COMMENCEMENT OF ANY CONSTRUCTION. MODOT REQUIRES UTILITIES TO BE PLACED IN THE LAST 6' OF THEIR RIGHT-OF-WAY IN THE "UTILITY CORRIDOR" IN HDPE CONDUIT RUNNING PARALLEL AT A 30" MINIMUM DEPTH AND PERPENDICULAR CROSSINGS AT A 72" MINIMUM DEPTH. PERPENDICULAR CROSSINGS MAY BE PLACED AT A 48" MINIMUM DEPTH IF PLACED IN STEEL CONDUIT.



Know what's **below**.  
**Call** before you dig.



olsson

7301 West 133rd Street, Suite 200  
Overland Park, KS 66213-4750  
TEL 913.381.1170 [www.olsson.com](http://www.olsson.com)

PE Stamp &amp; Approval

[illegible]

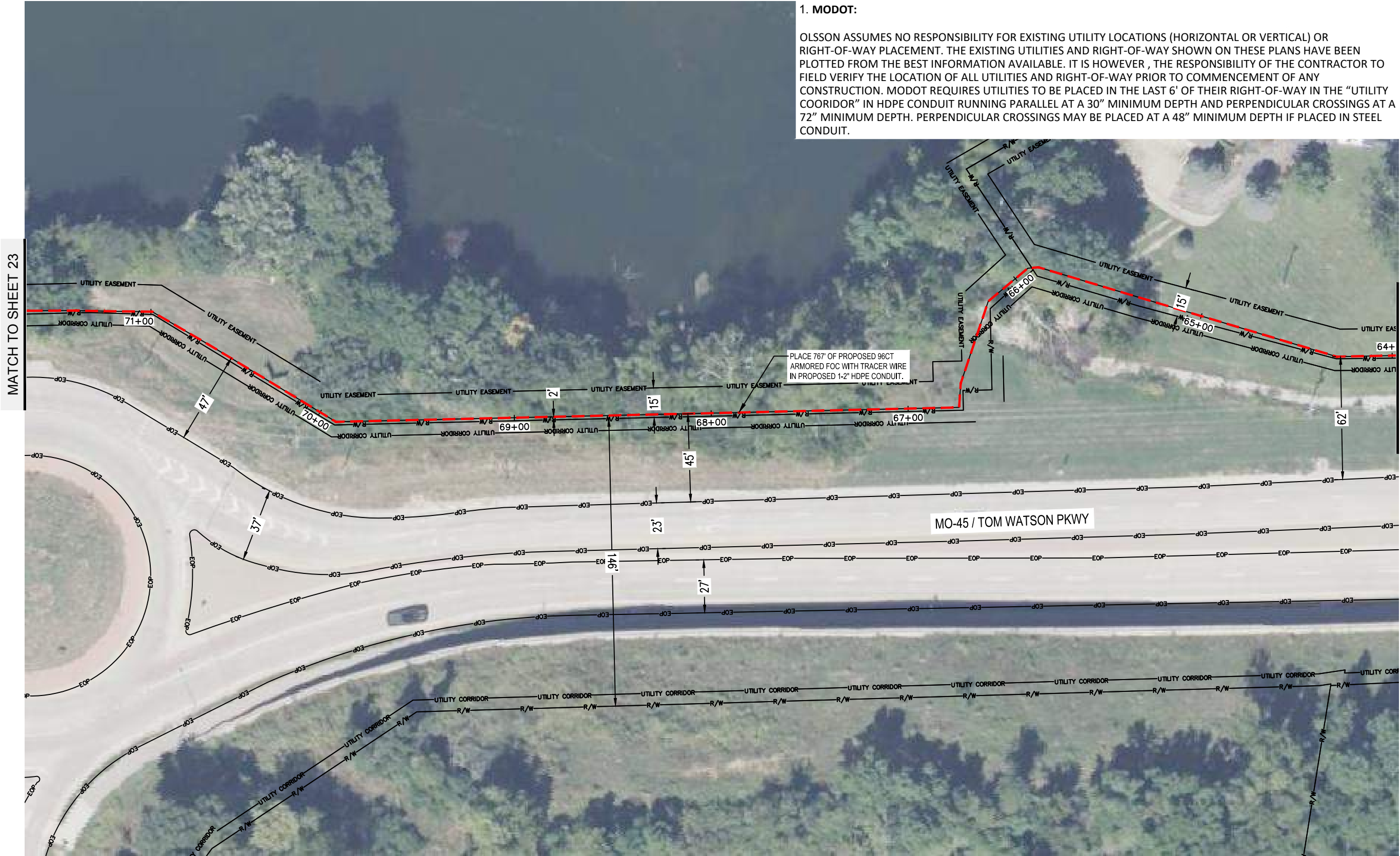
PROJECT SHEET	
SUPPORT SERVICES NORTH RING NETWORK EXTENSION	
PARKVILLE, MO	2023

drawn by: CAS  
checked by: JMC  
approved by: ENG  
project no.: \_\_\_\_\_  
drawing no.: \_\_\_\_\_

SHEET  
21 of 35



DWG: F:\projects\015-1955-d\40-design\AutoCAD\final plans\Network Extension Final 2.dwg USER: jflickner  
DATE: Sep 21, 2023 7:09am XREFS: Alignment Sheets NetExt\_Base\_1 D15-1955\_MO\_GISMS NetExt\_Base\_2 D15-1955\_NetExt\_ROW

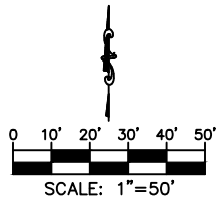


1. MODOT:

OLSSON ASSUMES NO RESPONSIBILITY FOR EXISTING UTILITY LOCATIONS (HORIZONTAL OR VERTICAL) OR RIGHT-OF-WAY PLACEMENT. THE EXISTING UTILITIES AND RIGHT-OF-WAY SHOWN ON THESE PLANS HAVE BEEN PLOTTED FROM THE BEST INFORMATION AVAILABLE. IT IS HOWEVER, THE RESPONSIBILITY OF THE CONTRACTOR TO FIELD VERIFY THE LOCATION OF ALL UTILITIES AND RIGHT-OF-WAY PRIOR TO COMMENCEMENT OF ANY CONSTRUCTION. MODOT REQUIRES UTILITIES TO BE PLACED IN THE LAST 6' OF THEIR RIGHT-OF-WAY IN THE "UTILITY COORIDOR" IN HDPE CONDUIT RUNNING PARALLEL AT A 30" MINIMUM DEPTH AND PERPENDICULAR CROSSINGS AT A 72" MINIMUM DEPTH. PERPENDICULAR CROSSINGS MAY BE PLACED AT A 48" MINIMUM DEPTH IF PLACED IN STEEL CONDUIT.

SHEET QUANTITIES

ITEM	ITEM DESCRIPTION	UNITS	QUANTITY
1.	SUPPLY & INSTALL 1-2" HDPE DUCT	LF	767
2.	SUPPLY & INSTALL TRACER WIRE	LF	767
3.	INSTALL 96CT ARMORED FIBER OPTIC CABLE - UNDERGROUND	LF	767



olsson

7301 West 133rd Street, Suite 200  
Overland Park, KS 66213-4760  
TEL 913.381.1170 www.olsson.com

PE Stamp & Approval

REVISIONS DESCRIPTION

DATE

REV. NO.

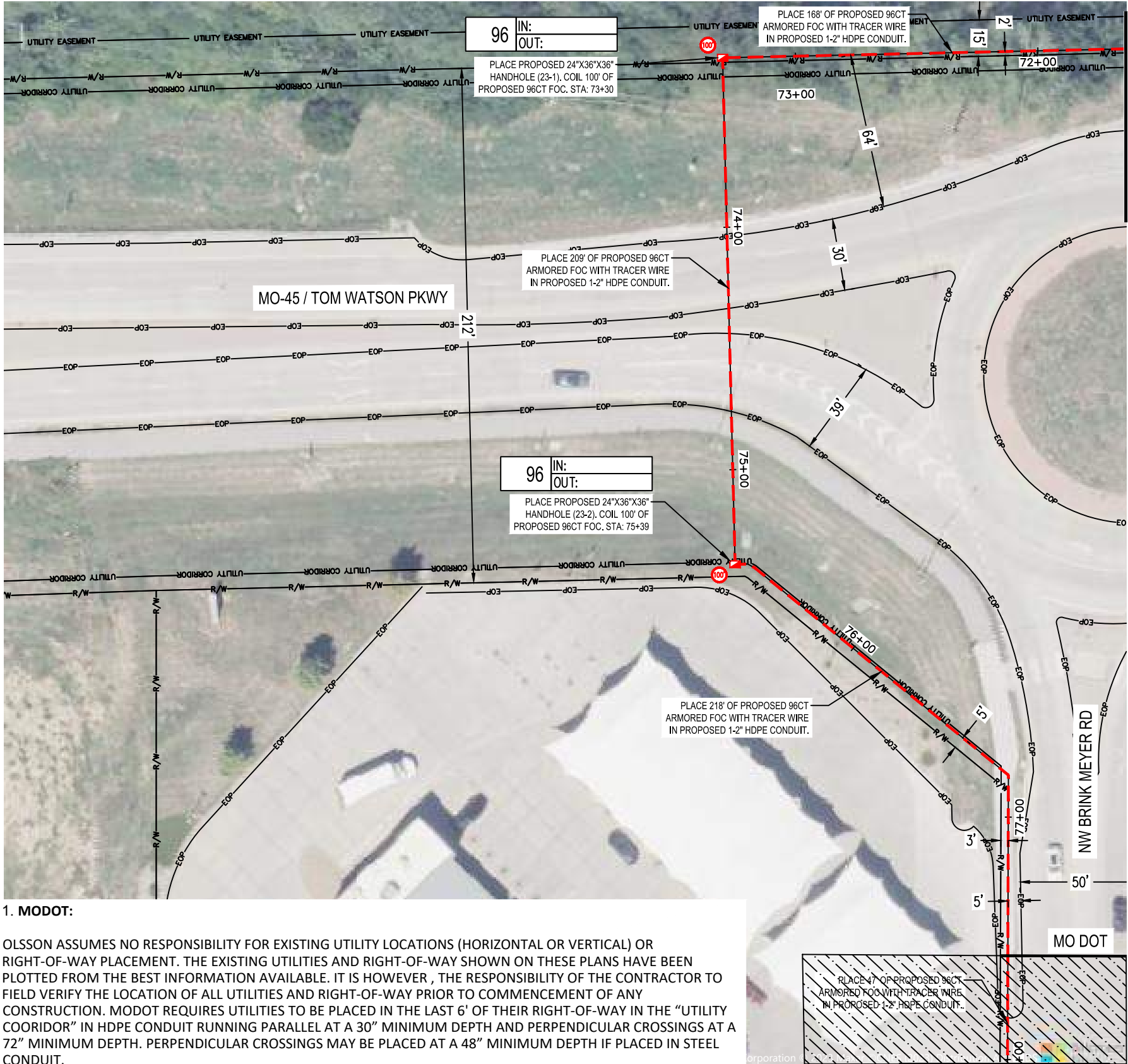
PROJECT SHEET	2023
SUPPORT SERVICES NORTH RING NETWORK EXTENSION	
PARKVILLE, MO	

drawn by: CAS  
checked by: JMC  
approved by: ENG  
project no.:  
drawing no.:

SHEET

22 of 35

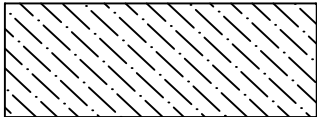




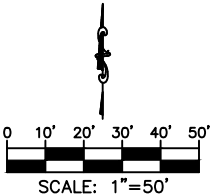
1. MODOT:

OLSSON ASSUMES NO RESPONSIBILITY FOR EXISTING UTILITY LOCATIONS (HORIZONTAL OR VERTICAL) OR RIGHT-OF-WAY PLACEMENT. THE EXISTING UTILITIES AND RIGHT-OF-WAY SHOWN ON THESE PLANS HAVE BEEN PLOTTED FROM THE BEST INFORMATION AVAILABLE. IT IS HOWEVER , THE RESPONSIBILITY OF THE CONTRACTOR TO FIELD VERIFY THE LOCATION OF ALL UTILITIES AND RIGHT-OF-WAY PRIOR TO COMMENCEMENT OF ANY CONSTRUCTION. MODOT REQUIRES UTILITIES TO BE PLACED IN THE LAST 6' OF THEIR RIGHT-OF-WAY IN THE "UTILITY COORIDOR" IN HDPE CONDUIT RUNNING PARALLEL AT A 30" MINIMUM DEPTH AND PERPENDICULAR CROSSINGS AT A 72" MINIMUM DEPTH. PERPENDICULAR CROSSINGS MAY BE PLACED AT A 48" MINIMUM DEPTH IF PLACED IN STEEL CONDUIT.

SHEET QUANTITIES			
ITEM	ITEM DESCRIPTION	UNITS	QUANTITY
1.	SUPPLY & INSTALL 1-2" HDPE DUCT	LF	643
2.	SUPPLY & INSTALL TRACER WIRE	LF	643
3.	SUPPLY & INSTALL 24"x36"x36" HANDHOLE	EACH	2
4.	INSTALL 96CT ARMORED FIBER OPTIC CABLE - UNDERGROUND	LF	843



HATCH AREA IS PART OF UG PERMIT #1



PROJECT SHEET

SUPPORT SERVICES NORTH RING NETWORK EXTENSION

PARKVILLE, MO

2023

REVISIONS

REV. NO.	DATE	REVISIONS DESCRIPTION

PE Stamp & Approval

olsson

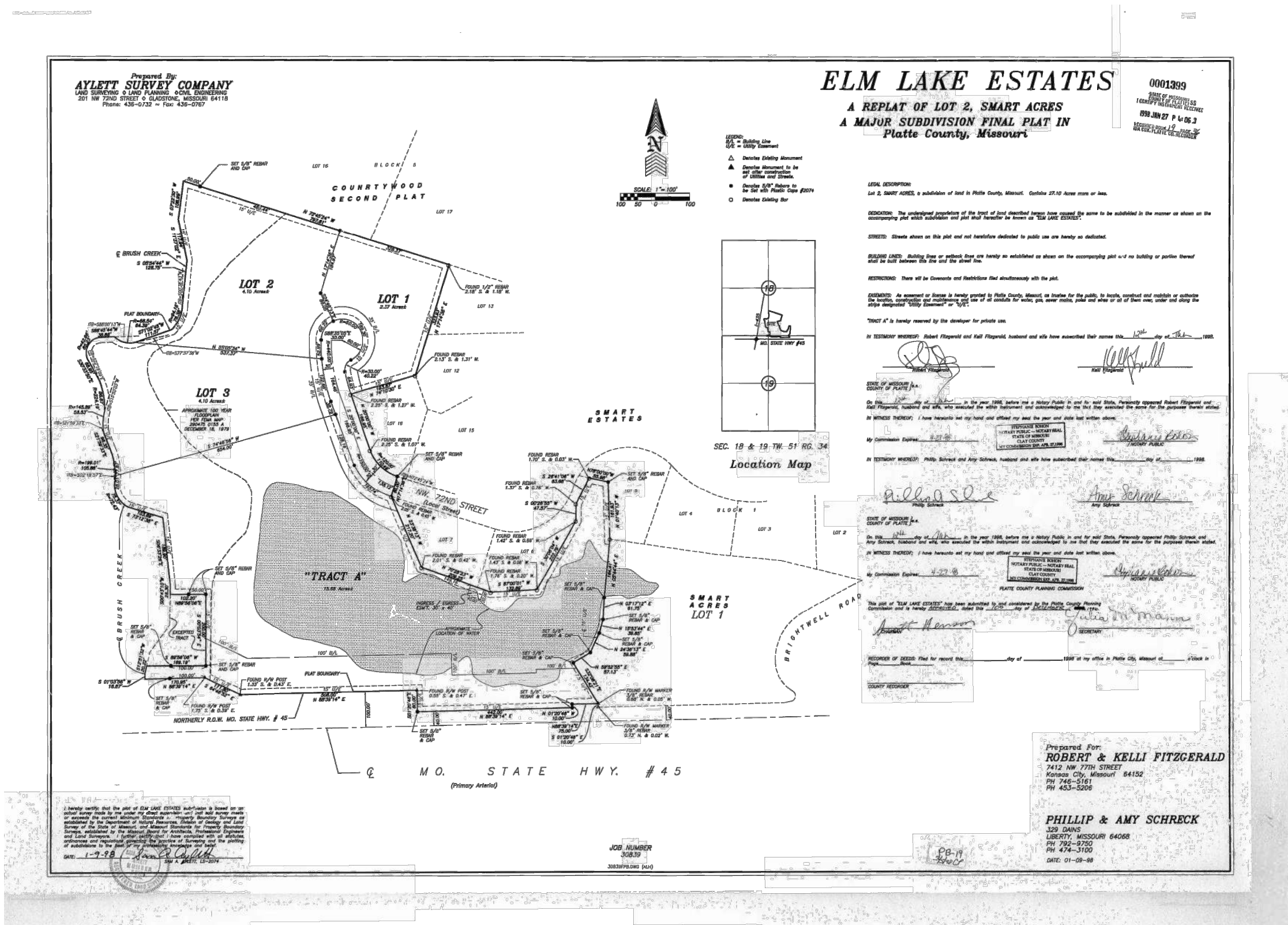
7301 West 133rd Street, Suite 200  
Overland Park, KS 66213-4750  
TEL 913.381.1170  
www.olsson.com

drawn by: CAS  
checked by: JMC  
approved by: ENG  
project no.:  
drawing no.:

SHEET  
23 of 35



# PLAT INFORMATION



olsson

7301 West 133rd Street, Suite 200  
Overland Park, KS 66213-4750  
TEL: 913.381.1170  
FAX: 913.381.1174  
www.olson.com

PE Stamp & Approval  
CLARENCE R. GASTINEAU  
MO. NO. PE-2008025192

REVISIONS DESCRIPTION

DATE

REV. NO.

REVISIONS

PLAT MAP

SUPPORT SERVICES NORTH RING  
NETWORK EXTENSION

PARKVILLE, MO

2023

drawn by: SPM  
checked by: DAI  
approved by: CRG  
project no.: project no.:  
drawing no.:  
date: 9/21/2023

SHEET  
33 OF 35



# TYPICALS

# PCA243636-00006

## PCX POLYMER CONCRETE ASSEMBLY

24" x 36" x 36"  
(For actual dimensions see drawing)

Polymer Concrete Assembly, Straight Sides, No Floor, WUC 3.6, ANSI/SCTE 77 - "T15/20K" 3/8" Hex Bolts, Standard Nameplate (Specify at time of order) Installed

### LOAD RATINGS

Incidental Traffic - Parking Lot, Sidewalk  
Conforms to:

- WUC 3.6
- ASTM C 857
- ANSI/SCTE 77

### FEATURES:

- Drop-In nameplate
- Shipped assembled
- Skid resistant cover
- Stainless steel bolts
- Cast-in floating nut box
- Integral drain holes

Additional product information  
continued on the reverse

**newbasis**  
Composites for Infrastructure

2626 Kansas Avenue  
Riverside, California 92507

951.787.0600

951.787.0632 (fax)

info@newbasis.com



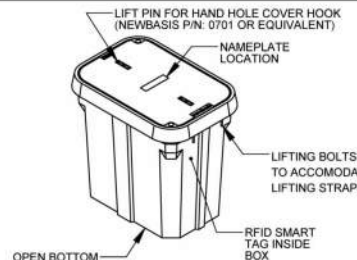
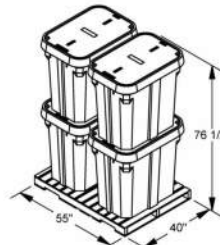
newbasis.com

**PCX**  
POLYMER CONCRETE  
The Next Generation

### Inside Dimensions

Length	Width	Depth
33 9/16"	21 15/16"	33"
27 1/8"	15 1/2"	

Rev: C.0

<b>PCA243636-00006</b>	<b>PCX POLYMER CONCRETE ASSEMBLY</b>	<div style="display: flex; justify-content: space-between; align-items: center;"> <div style="text-align: center;">  <p>PCX POLYMER CONCRETE The Next Generation</p> </div> <div style="text-align: center;">  <p>newbasis</p> </div> </div>
<p>Polymer Concrete Assembly, Straight Sides, No Floor, WUC 3.6, ANSI/SCTE 77 - "T15/20K," 3/8" Hex Bolts, Standard Nameplate (Specify at time of order) Installed</p>		<p><b>24" x 36" x 36"</b> For actual dimensions, see drawing on front side.</p>
<p><b>AVAILABLE OPTIONS</b></p> <ul style="list-style-type: none"> <li><input type="checkbox"/> Tier 22 Load Rating</li> <li><input type="checkbox"/> Penta Bolts</li> <li><input type="checkbox"/> Telephone EMS</li> <li><input type="checkbox"/> Power EMS</li> <li><input type="checkbox"/> Custom Nameplate Installed</li> <li><input type="checkbox"/> Custom Nameplate Shipped Separately</li> <li><input checked="" type="checkbox"/> Standard Nameplate Installed</li> <li><input type="checkbox"/> Standard Nameplate Shipped Separately</li> </ul>	<p><b>NAMEPLATES</b></p> <p>One standard nameplate included with each assembly, installed at the factory or easily installed in the field. Custom nameplates are available. Contact customer service.</p> <p><b>Standard Nameplates</b></p> <ul style="list-style-type: none"> <li>• Electric</li> <li>• Telephone</li> <li>• Fiber Optic</li> <li>• Water</li> <li>• Street Lighting</li> <li>• Broadband</li> <li>• Traffic</li> <li>• CATV</li> <li>• Traffic Signal</li> <li>• Communications</li> </ul>	
<p>☒ - Indicates a selected option</p>		
<p><b>MATERIAL PROPERTIES AND ATTRIBUTES</b></p> <p><b>Compressive Strength</b> Polymer Concrete - 11500 PSI Per ASTM D695</p> <p><b>Flexural Strength</b> Polymer Concrete - 4000 PSI Per ASTM D790</p> <p><b>Coefficient of Friction (Dry)</b> <b>1.085</b> Per ASTM C1028</p> <p><b>Polymer Concrete</b></p> <ul style="list-style-type: none"> <li>- Advanced composite: Very high strength to weight ratio</li> <li>- Non-metallic</li> <li>- Non-conductive</li> <li>- UV Resistant</li> <li>- High impact resistant</li> <li>- Impervious to chemicals and moisture</li> </ul> <p>Materials tested in accordance with ASTM D-543 and ASTM D-570</p>	<p><b>WEIGHTS AND SHIPPING</b></p> <p>COVER WEIGHT: 98.0 lbs.</p> <p>BOX WEIGHT: 239.9 lbs.</p> <p>ASSEMBLY WEIGHT: 337.9 lbs.</p> <p>LOADED PALLET WEIGHT: 1394 lbs.</p> <p>Standard shipping includes van delivery of pallet quantities to the lower 48 states. Partial pallet quantities and flat bed shipping available at an additional cost.</p>	<p><b>PACKAGING</b> (Steel Banding, Edge Protection)</p> <p>PALLET QUANTITY: 4</p> 
		<p>Rev. C. 0</p>

[illegible]

## TYPICAL DETAILS

# SUPPORT SERVICES NORTH RING NETWORK EXTENSION

PARKVILLE MO

2023

drawn by: \_\_\_\_\_ SPM  
checked by: \_\_\_\_\_ DAH  
approved by: \_\_\_\_\_ CRG  
project no.: \_\_\_\_\_ project no.: \_\_\_\_\_  
drawing no.: \_\_\_\_\_  
date: \_\_\_\_\_ 9/21/2023



DWG: F:\projects\015-1955-d\40-design\AutoCAD\final plans\Sheets\TLCM\Final Plans\Network Extension Cover.dwg      USER: jflickner  
DATE: Sep 21, 2023 7:09am      XREFS:

TOTAL QUANTITIES			
ITEM	ITEM DESCRIPTION	UNITS	QUANTITY
1.	SUPPLY & INSTALL 1-2" HDPE DUCT	LF	8343
2.	SUPPLY & INSTALL 24"X36"X36" HANDHOLE	EACH	9
3.	SUPPLY & INSTALL 30"X48"X36" HANDHOLE	EACH	3
4.	SUPPLY & INSTALL TRACER WIRE	LF	8343
5.	SUPPLY & INSTALL UNDERGROUND SPLICE ENCLOSURE	EACH	1
6.	INSTALL 96CT ARMORED FIBER OPTIC CABLE - UNDERGROUND	LF	9543
* 7.	TRAFFIC PERMIT	AGENCIES	1
* 8.	RIGHT OF WAY PERMIT	AGENCIES	1

\* CITY, COUNTY, AND STATE.



7301 West 133rd Street, Suite 200      TEL 913.381.1170  
Overland Park, KS 66213-4750      FAX 913.381.1174      www.olsson.com



Know what's below.  
Call before you dig.

drawn by: SPM  
checked by: DAH  
approved by: CRG  
project no.: project no.:  
drawing no.:  
date: 9/21/2023

FINAL QUANTITIES	REV. NO.	DATE	REVISIONS DESCRIPTION
SUPPORT SERVICES NORTH RING NETWORK EXTENSION			
PARKVILLE, MO			
			REVISIONS

PE Stamp & Approval  
CLARENCE R. GASTINEAU  
MO. NO. PE-2008025192



7301 West 133rd Street, Suite 200      TEL 913.381.1170  
Overland Park, KS 66213-4750      FAX 913.381.1174      www.olsson.com