



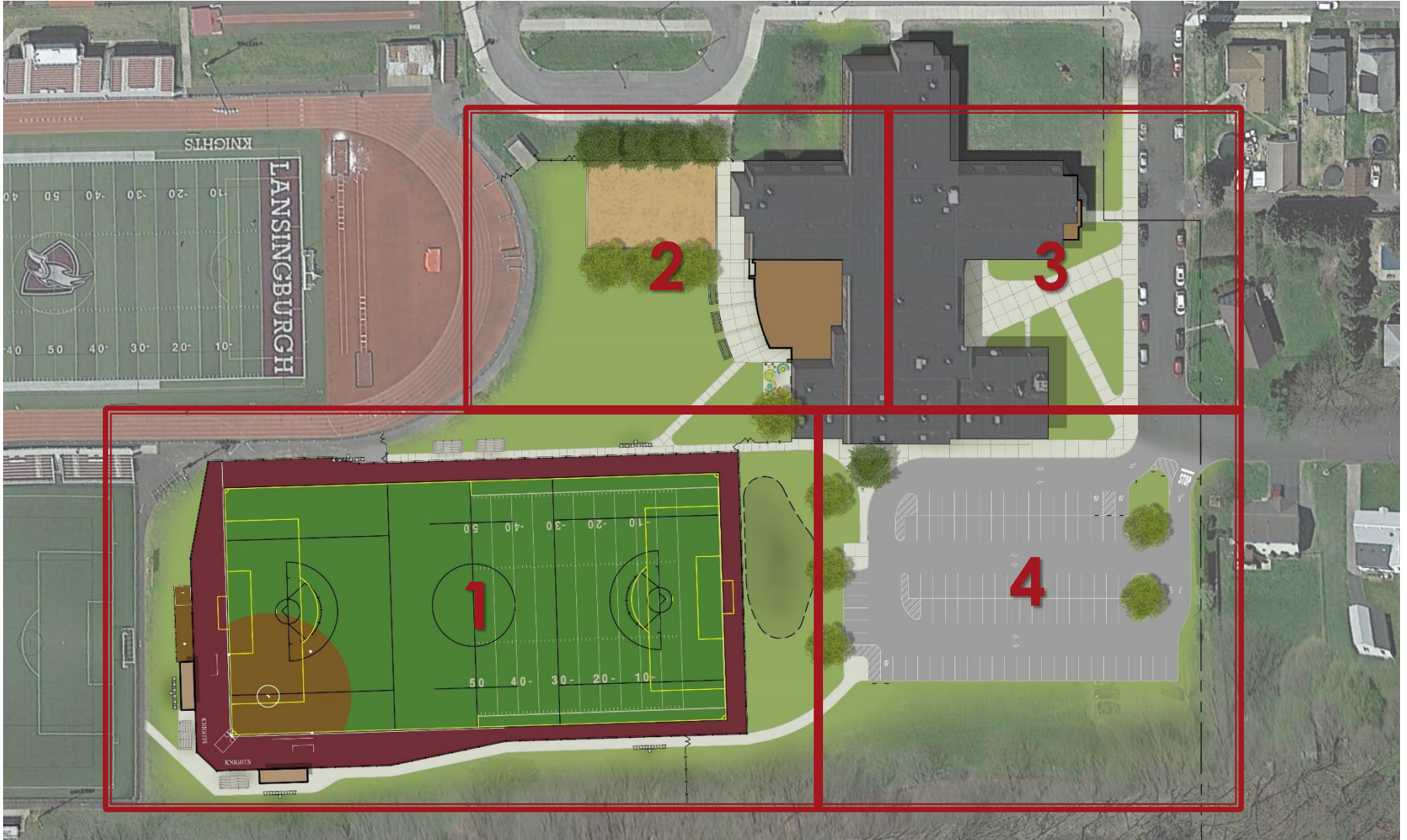
LANSINGBURGH
— CENTRAL SCHOOL DISTRICT —

BOE Presentation of Capital Improvement Project

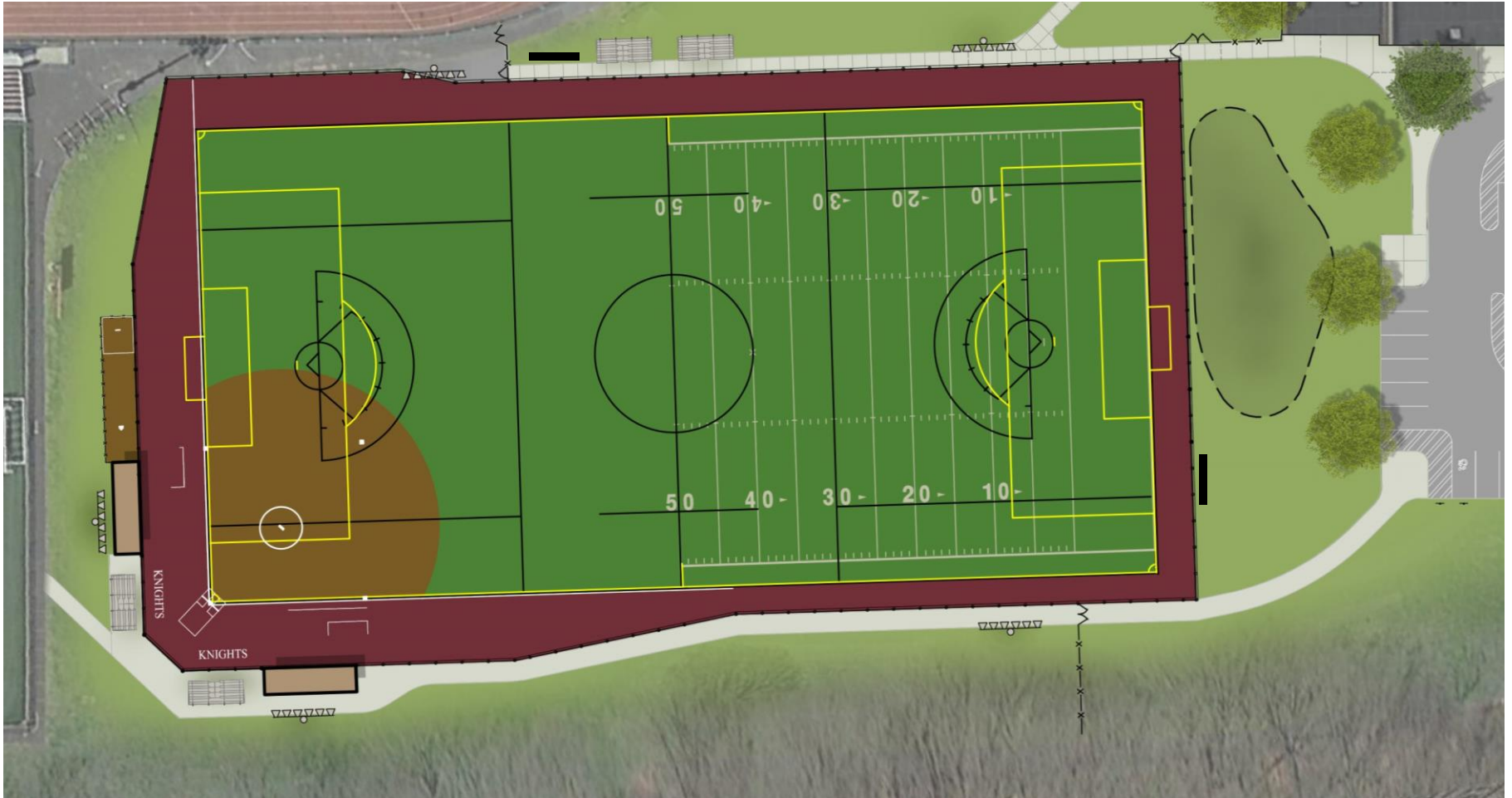
October 11, 2022



SITE SCOPE



ATHLETIC FIELD OVERVIEW



- Softball, Soccer, Unified Lacrosse and Half Football Field
- Softball includes backstops, dugouts and 1 bullpen
- LED Lights
- Scoreboards
- Pedestrian Circulation
- Bleachers
- Stormwater Management

PLAZA, PLAYGROUND AND CLASSROOM



FRONT ENTRANCE



- Walk replacement
- Maintain ex. Curbs
- No Parking Signs
- On-Street Bus Parking - 8

PARKING LOT



- One way entrance / exit
- Parking Spaces – 97 plus 2 hc
- Bus Parking – 4

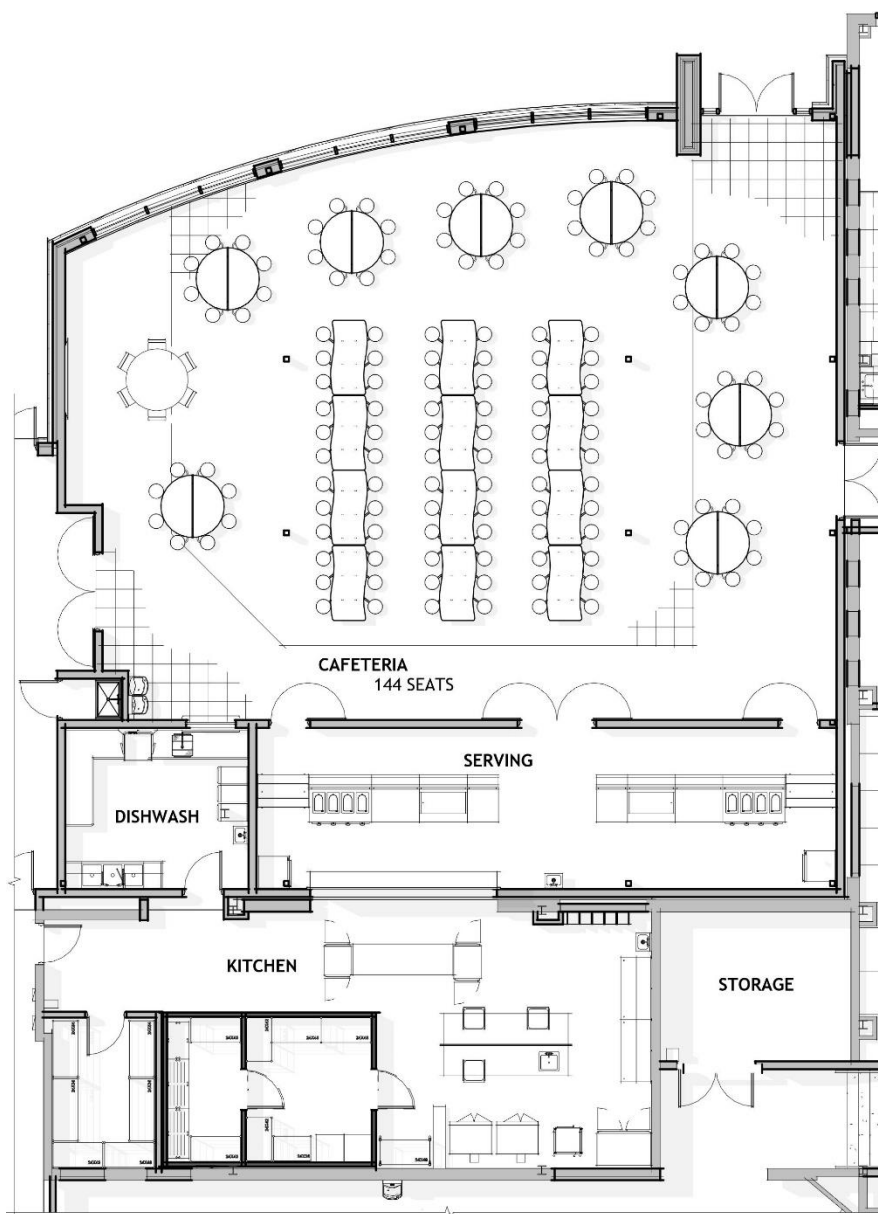
OVERALL 1st FLOOR WORK

- ✓ Cafeteria Addition
- ✓ Outdoor Classroom
- ✓ Kitchen Upgrades
- ✓ Elevator Addition – ADA compliant
 - ✓ Remove old elevator and convert to storage
- ✓ Add bleachers to Cafetorium
- ✓ Convert Locker Rms to instructional rooms, toilets, and storage
- ✓ Upgrades to all gang and single use toilet rooms
- ✓ Art Room Renovations
- ✓ Add instructional rooms to stage
- ✓ Replace flooring in classroom toilet rooms
- ✓ LED lighting replacement throughout building
- ✓ Replace fire alarm panel
- ✓ Replace PA system
- ✓ Upgrade energy management system
- ✓ AC to renovated locker rooms, art, music, instruction rooms
- ✓ AC to cafeteria addition

OVERALL 2nd FLOOR WORK

- ✓ Gang toilet room renovations
- ✓ Elevator Addition
- ✓ Replace media center rooftop unit
- ✓ Replace gym HVAC units
- ✓ Replace exhaust fans

CAFETERIA ADDITION AND KITCHEN



- ✓ Seating for 144 students
- ✓ Monitor at side wall for professional development meetings
- ✓ Operable exterior windows
- ✓ Exterior Patio
- ✓ Outdoor Classroom
- ✓ Serving Line
- ✓ Dishwash with coiling counter door
- ✓ Upgraded Kitchen

INTERIOR CAFETERIA VIEWS



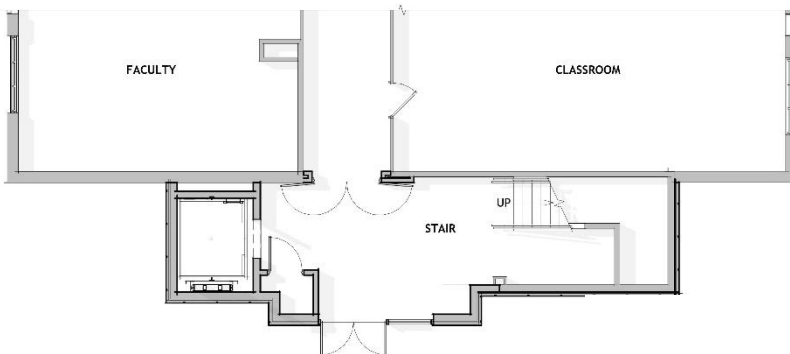
CAFETERIA ADDITION, PLAZA AND OUTDOOR CLASSROOM



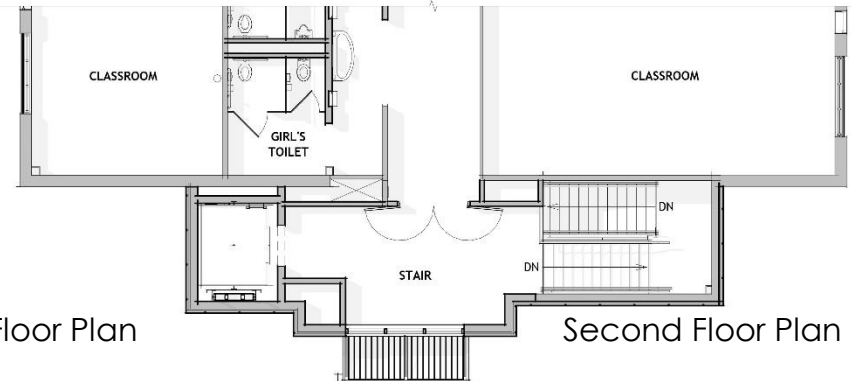
ELEVATOR ADDITION



- ✓ ADA Compliant Elevator
- ✓ Insulated metal panel exterior
- ✓ New entrance doors
- ✓ Fire Rated elevator and stair enclosure

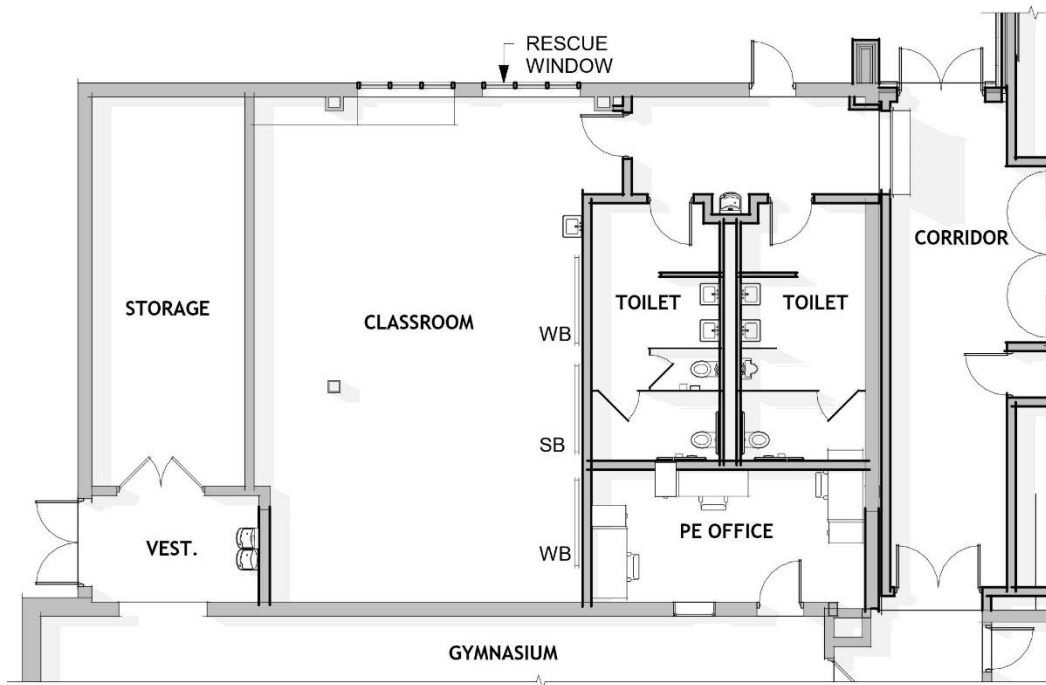


First Floor Plan



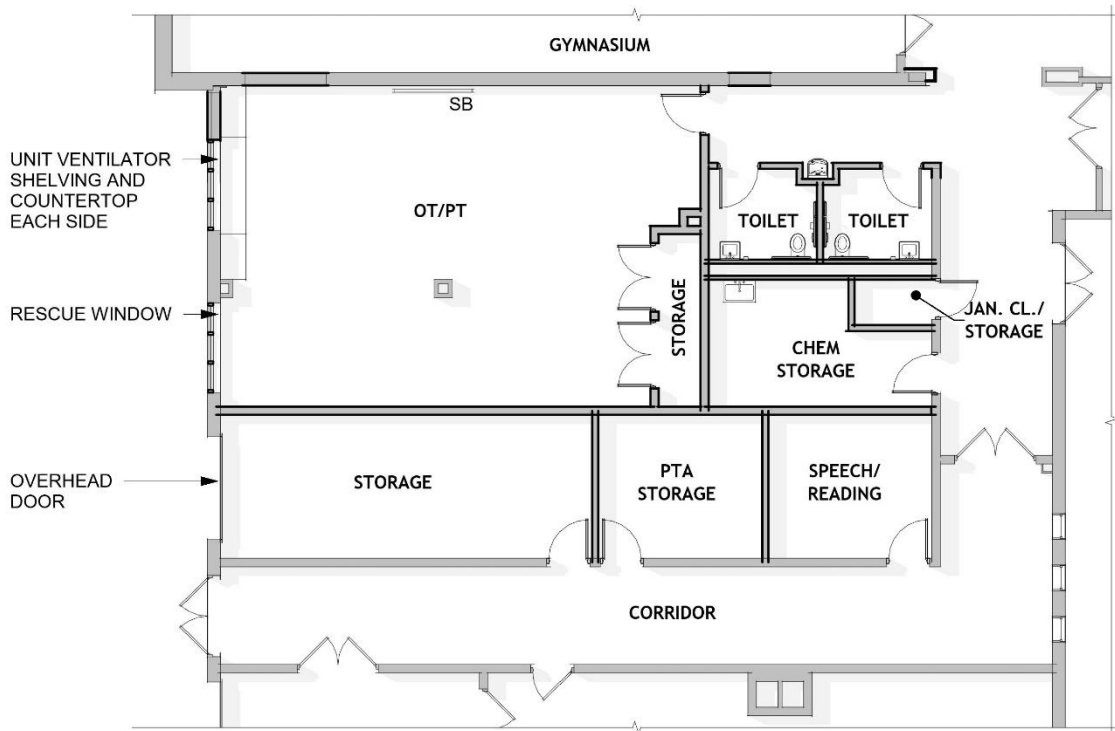
Second Floor Plan

GIRL'S LOCKER ROOM CONVERSION



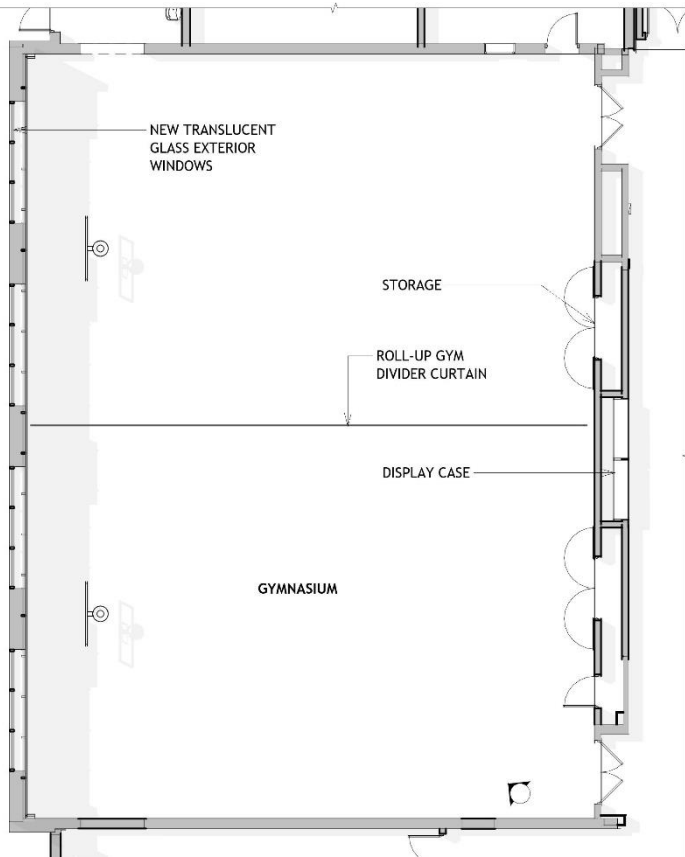
- ✓ Flexible classroom
 - ✓ Teaching wall against toilet rooms
 - ✓ White boards and smartboards
 - ✓ VCT Flooring
 - ✓ Sink
- ✓ Gang toilets accessible from exterior
- ✓ Gym storage and exit to remain
- ✓ New PE Office direct off Gymnasium

BOY'S LOCKER ROOM CONVERSION



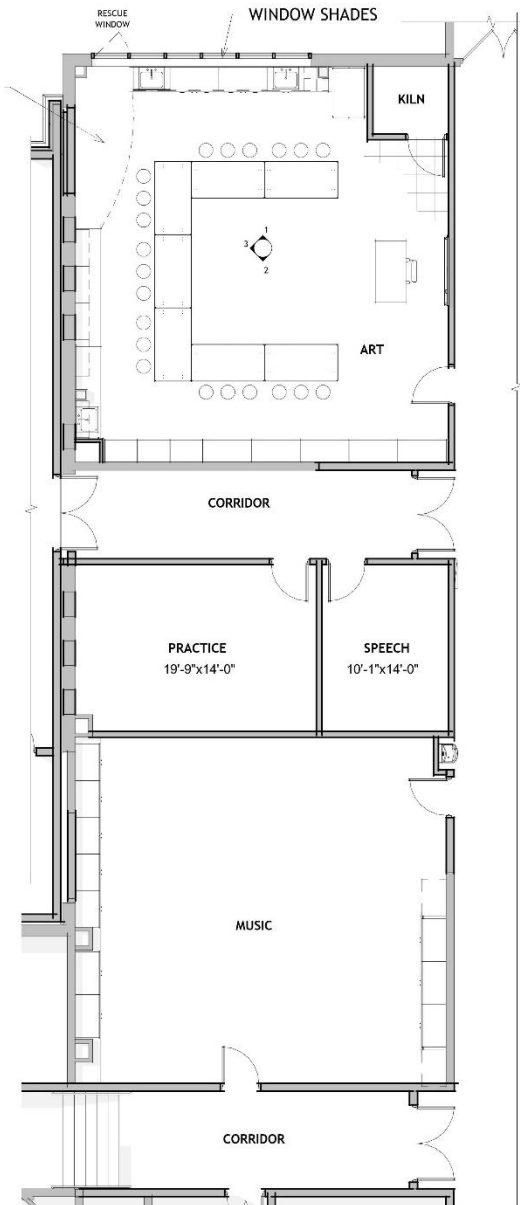
- ✓ PTA Storage
- ✓ Maintenance Storage
- ✓ Chemical Storage
- ✓ Janitor's Closet
- ✓ Unisex Toilets
- ✓ Speech/Reading
- ✓ OT/PT
 - ✓ Padding on column
 - ✓ Sports floor on VCT
 - ✓ Build in closet 3'-0" deep with shelving and hooks
 - ✓ Support for Swings
 - ✓ Smart Board
 - ✓ Power and data for three teacher station locations

GYM SCOPE



- ✓ Remove Corridor folding partition and replace with storage and display cabinet
- ✓ Remove gym divider and replace with roll up curtain
- ✓ Install translucent glass windows
- ✓ Replace tectum panels at exterior wall

ART AND MUSIC ROOM SCOPE



- ✓ Kiln in dedicated room
- ✓ Remove display case
- ✓ create teaching wall
- ✓ Replace all casework and sinks
- ✓ More storage cabinets
- ✓ Clay Traps
- ✓ Free Art area



PROJECT SCHEDULE

- ✓ **SED Submission 10/28/22**

- ✓ Third Party Review – Approx 3-month duration

- ✓ **Bidding and Contract Award**

- ✓ February 2023 - Bidding
- ✓ March 2023 – Contract Awards
- ✓ State Contracts/Coop Work

- ✓ **Construction**

- ✓ April 2023 – August 2024 (spanning 2 summers)
- ✓ Additions and Athletic field work will continue past the summer months