



26351 JUNIPERO SERRA ROAD
SAN JUAN CAPISTRANO, CA 92675

CEEB CODE: 053197

949.493.9307 / PHONE

949.493.9308 / FAX

JSERRA.ORG  

#LIONNATION

ADMINISTRATION

RICH MEYER

President

ERIC STROUPE

Principal

PAT REIDY

Vice President of Mission & Faith

DENISE PASCOE

Vice Principal of Academics

ZACHARY ECKERT

Vice Principal Student Formation & Leadership

COUNSELING DEPARTMENT

OLIVIA HUIE

Director of Counseling (A-B)
ohuie@jserra.org / ext. 1123

MYRA CASTRO

Director of University Relations & College Events
mcastro@jserra.org / ext. 7125

GARRETT ROLDAN

Academic and College Counselor (C-F)
grolدان@jserra.org / ext. 1135

JENNA NELSON

Academic and College Counselor (G-KI)
jnelson@jserra.org / ext. 1118

MICHELE MURPHY

Academic and College Counselor (Km-L)
mmurphy@jserra.org / ext. 1155

JASMINE VILLA-STOFKO

Academic and College Counselor (O-Sq)
jstofko@jserra.org / ext. 1116

MONICA CELAYA

Academic and College Counselor (Sr-Z)
mcelaya@jserra.org / ext. 1110

SHELLEY DEVER

Registrar
sdever@jserra.org / ext. 1156

JSERRA SCHOOL PROFILE 2023-2024

KEY ASPECTS OF THE SCHOOL

JSerra Catholic High School, established in 2003, is the first non-diocesan founded, private Roman Catholic high school in California and the fourth in the country. Located in historic San Juan Capistrano, CA, JSerra is in an ideal location between San Diego and Los Angeles. JSerra provides a Christian culture that builds up the whole student through robust intellectual development and innovative co-curricular programming combined with high-level athletic opportunities, all grounded in virtue-based character formation.

MISSION STATEMENT

JSerra is an independent Roman Catholic high school that encourages students to pursue personal and professional excellence in life. Guided by the teachings of the Catholic Church, we work in partnership with committed parents and inspirational teachers to form the faith, intellect, and character of our young men and women within a Christ-centered, sacrament-based learning environment.

ACCREDITATIONS AND MEMBERSHIPS

JSerra is accredited by the Western Association of Schools and Colleges (WASC) and the Western Catholic Education Association (WCEA). JSerra is a member of the College Board, the National Catholic Educational Association, Western Association of College Admissions Counseling (WACAC), and the National Association for College Admissions Counseling (NACAC).

THE CLASS OF 2023 PROFILE

286

SENIORS GRADUATED
FROM JSERRA IN 2022

\$19,184,415

TOTAL COLLEGE SCHOLARSHIPS
& FINANCIAL AID OFFERED
TO OUR GRADUATES AVERAGING

\$67,078

PER SENIOR

THE CLASS OF 2022 GAINED
ACCEPTANCES TO

300

PUBLIC & PRIVATE COLLEGES,
ART COLLEGES AND
FOREIGN UNIVERSITIES IN

34

STATES AND

3

COUNTRIES

60

CSF GOLD SEAL BEARERS

56

NHS MEMBERS

NATIONAL MERIT RECOGNITION

1

FINALIST

13

COMMENDED

STUDENT BODY 2023-2024

Admission is determined by entrance exam (HSPT), recommendations, and elementary school grades. JSerra receives over **1,000** applications annually. We accept roughly **50%** of applicants. Over **75%** of admitted students matriculate.

For the 2023-2024 school year:

25% of the student body receives financial grants/scholarships.

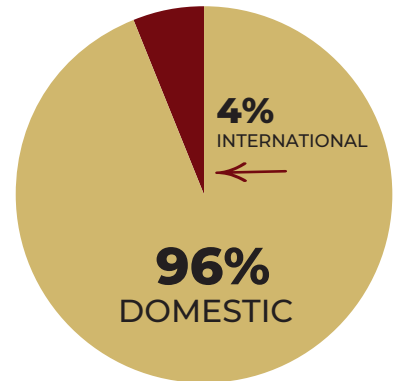
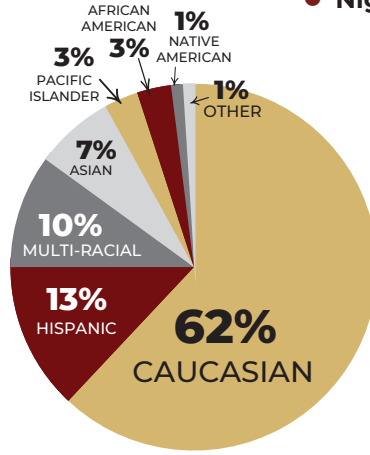
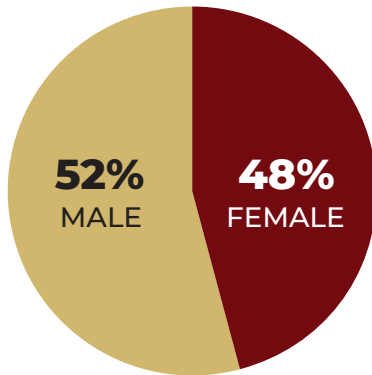
75 domestic public and private elementary schools are represented in the freshman class.

JSerra's international students come from **13 countries:**

- Belgium
- France
- Slovakia
- Canada
- Hong Kong
- Spain
- China
- Japan
- Tanzania
- Costa Rica
- Mexico
- United Kingdom
- Nigeria

ENROLLMENT BY CLASS

CLASS OF 2024	298
CLASS OF 2025	333
CLASS OF 2026	334
CLASS OF 2027	335



CURRICULUM

The academic program is organized in a modified block schedule. Online classes taken will be denoted on our transcripts. Theology is included in our academic GPA and is considered a core academic class at JSerra. First Year Seminar is a required course for all students with the majority of the content covering logic and grammar. Students are not ranked at JSerra except for the valedictorian and salutatorian.

A student must complete 270 credits to graduate.

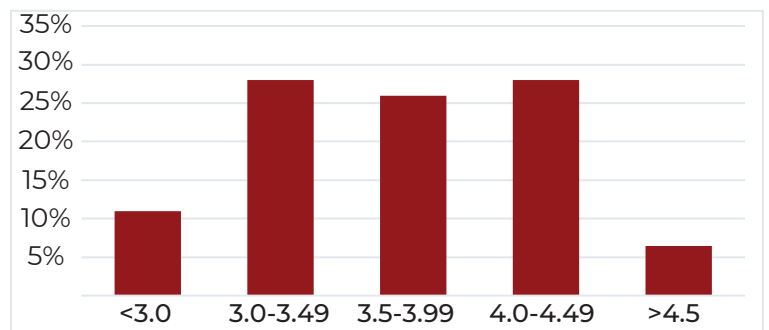
GRADUATION REQUIREMENTS INCLUDE:

Theology*	40 credits
English	40 credits
Math	30 credits
Science	30 credits
Social Studies	30 credits
World Language	20 credits
Visual & Performing Arts	10 credits
Physical Education	20 credits
First Year Seminar*	5 credits
Health	5 credits
Electives	40 credits

*Transfer students are exempt from completing the full requirement.

Students must also complete 80 hours of Christian Service (20 hours annually) by the time of graduation.

THE CLASS OF 2023 GPA



ACADEMIC MEAN Weighted **3.67** / Unweighted **3.42**

GRADING AND GPA

The school year is divided into two semesters. Grades are weighted by one point for Honors and AP courses. JSerra assigns letter grades using a 4.0 system. Pluses and minuses do not affect the GPA.

- A = 90-100**
- B = 80-89**
- C = 70-79**
- D = 60-69**
- F = 0-59**



Honor roll qualifications based on weighted academic GPA each semester.
Principal's Honor Roll - 4.0 and above
Honor Roll - 3.5-3.99

2023 SAT INFORMATION

In 2022-2023, **124** JSerra seniors took the SAT.

SUBJECT	JSERRA	STATE
ERW	608	560
Math	630	555
TOTAL	1238	1115

2023 ACT INFORMATION

In 2023, **70** JSerra seniors took the ACT.

SUBJECT	JSERRA	STATE
English	27.7	26.9
Math	25.9	25.6
Reading	28.0	27.3
Science	25.8	25.8
Composite	26.9	26.5

MAGNET PROGRAMS

Approximately 30% of our student body participates in a magnet program. Because all magnet programs require specialized courses per year, many of the magnet students must take online and/or summer courses to meet all graduation requirements. Magnet students spend many hours outside of class time to fulfill magnet requirements, whether it is visiting hospitals at five am, mock trials over weekends or statewide and national competitions, all resulting in recognitions regionally and nationally. All magnet courses receive honors credit and only students in the magnet programs are allowed to take the specialized classes.

ARTS MAGNET

The Arts Magnet Program provides four years of pre-professional training in the Visual and Performing Arts, specifically, Choir, Dance, Drawing and Painting, Orchestra, and Theatre. Discipline-specific honors and AP courses are designed to develop students' skills to an advanced level and provide them with the foundation to pursue their art at the college level. Students can choose from a multitude of visual and performing arts classes in addition to the following extracurricular courses taken in the evenings, including:

- JAMS - JSerra Arts Magnet Singers
- JAM-ON - JSerra Arts Magnet

THE ENGINEERING MAGNET

The JSerra Engineering Magnet Program (EMP) adopts the curriculum of Project Lead the Way (PLTW), a leader in providing rigorous and innovative STEM education. Classes include:

- Introduction to Engineering
- Principles of Engineering
- Aerospace Engineering
- Civil Engineering
- Computer Information Manufacturing
- Computer Science

THE LAW MAGNET

The Pre Law Professional Magnet Program gives students access to the first year Law School curriculum. All courses are articulated through Saddleback College, giving students 18 units of college credit by the time of graduation. Classes include:

- Introduction to Law
- Legal Research and Writing
- Legal Aspects of Real Estate
- Criminal Law
- Constitutional Law
- Contract Law

HUMANITIES PROGRAM

Drawing on the great thinkers, writers, philosophers, and artists of Western Civilization, the program will form students' minds through an education of the heart. Humanities takes a thematic-historic approach that follows a four-year trajectory from the Ancients to Post-Modernism, studying the foundations, high points, and centrality of Christian culture and the Catholic worldview in forming an understanding of the human person. Focusing on readings in English and Theology from the Western canon and Christian culture, the program will seek to uncover the common thread that weaves all great ideas together: Christ revealed through the good, the true, and the beautiful.

THE DUPONT BUSINESS MAGNET

Founded in 2011, the DuPont Business Magnet Program has a relationship with the Paul Merage School of Business at UC Irvine. Courses are articulated through Saddleback College, providing students with 18 units of college credit. Classes include:

- Intro to Business
- Business Communications
- Accounting and Contract Law
- Sales and Marketing
- Capstone Project

THE MEDICAL MAGNET

Students in the Medical Magnet Program take the most rigorous math and science pathways available at JSerra and double up in science for four years. Classes include:

- Introduction to Health Sciences
- Medical Ethics
- Anatomy Physiology
- Concepts of Genetics
- Introduction to Neuroscience

2023 AP EXAM PASS RATES

(Scores of 3 or higher)

SUBJECT	PASS RATE	# OF STUDENTS	# OF 5s
2D Art & Design	94%	18	9
Biology	82%	17	3
Calculus AB	97%	29	26
Calculus BC	100%	6	4
Chemistry	86%	50	13
Chinese Lang. & Cult.	100%	12	9
Comp. Sci A	100%	8	5
Drawing	100%	5	2
English Language	96%	81	21
English Literature	91%	57	14
Envir. Science	97%	63	28

SUBJECT	PASS RATE	# OF STUDENTS	# OF 5s
European History	92%	52	16
French	14%	7	0
Macroeconomics	84%	86	4
Music Theory	50%	10	1
Physics 1	65%	23	7
Physics 2	100%	6	2
Physics C: Mechanics	100%	9	2
Spanish	95%	21	4
Statistics	90%	41	8
US Gov. & Politics	78%	36	9
US History	77%	112	15

AP EXAM FAST FACTS

755 AP exams taken by 418 students

Average Score 3.7

Percent of students earning a 3 or higher: 85%

Number of students earning a 5: 202

Number of AP Classes in 2023-2024: 22 (Includes FLVS Classes)

*Offering AP PreCalculus as an AP AP class in the 2023-2024 school year.

2023-2024 AP INFORMATION

JSerra offers **22 AP** courses (with others available through FLVS).

Students must meet class and grade pre-requisites to be placed in AP courses, which include an A- in both semesters of the college prep level or a B- in both semesters of the prior honors/AP level. All students who enroll in AP courses are required to sit for the AP exam. We report scores for all students who sit for an AP exam.

68 AP SCHOLARS	27 AP SCHOLARS WITH HONORS	55 AP SCHOLARS WITH DISTINCTION
-----------------------------	---	--

IN 2023, **755** EXAMS WERE TAKEN BY **418** STUDENTS
OVERALL, **85%** PASS RATE; **25%** EARNED A **5**

CLASS OF 2023 / DECISION DATA			
90%	4-YEAR COLLEGE	42%	IN-STATE
10%	2-YEAR COLLEGE	58%	OUT-OF-STATE
12% UC / 9% CSU / 11% CATHOLIC			
51% Applied Regular Decision / 49% Applied Early Action/Decision			

COLLEGE ADMISSIONS FOR THE CLASS OF 2023

Students were accepted into over **300** different colleges & universities across the globe including France and the United Kingdom.

Arizona State University-Tempe
Auburn University
Baylor University
Benedictine College +
Boise State University
Boston College +
Boston University
Brigham Young University-Provo
Brown University
Cal Poly San Luis Obispo
California Baptist University
California State University-Chico
California State University-Fullerton
California State University-Monterey Bay
California State University-San Marcos
Chaminade University of Honolulu +
Chapman University
Claremont McKenna College
Coastal Carolina University
College of the Holy Cross +
Colorado Mesa University
Colorado School of Mines
Concordia University-Irvine
Contra Costa College
Creighton University +
DePaul University +
Eastman School of Music of the University of Rochester
Embry-Riddle Aeronautical University-Prescott
Emerson College
Emory University
Fordham University +
Franciscan University of Steubenville +
Georgetown University
Gonzaga University +
Grand Canyon University-Traditional Campus
Hawaii Pacific University
High Point University
Hofstra University
Illinois College
Irvine Valley College
James Madison University
John Paul the Great Catholic University +
Louisiana State University

Loyola Marymount University +
Loyola University Chicago +
Loyola University New Orleans +
Michigan State University
New York University
Northeastern University
Northwestern Preparatory School (California)
Orange Coast College
Oregon State University
Pennsylvania State University-Penn State Harrisburg
Pennsylvania State University-Penn State Main Campus
Point Loma Nazarene University
Pratt Institute-Main
Purdue University-Main Campus
Rensselaer Polytechnic Institute
Rhode Island School of Design
Rose-Hulman Institute of Technology
Saddleback College
Saint Edward's University +
Saint Louis University +
Salt Lake Community College
Santa Barbara City College
Santa Clara University +
Savannah College of Art & Design - SCAD
Seattle University +
Southern Methodist University
Stanford University
Suffolk University
Syracuse University
Texas Christian University
Texas State University
The American University of Paris
The George Washington University
The New School
The University of Alabama
The University of Edinburgh
The University of Tampa
The University of Tennessee-Knoxville
Tulane University of Louisiana
United States Air Force Academy
University of Arizona
University of California-Berkeley
University of California-Davis

University of California-Irvine
University of California-Los Angeles
University of California-Riverside
University of California-San Diego
University of California-Santa Barbara
University of California-Santa Cruz
University of Colorado Boulder
University of Denver
University of Georgia
University of Illinois at Urbana-Champaign
University of Kansas
University of Massachusetts-Amherst
University of Miami
University of Michigan-Ann Arbor
University of Mississippi
University of Nevada-Las Vegas
University of Notre Dame +
University of Oklahoma-Norman Campus
University of Oregon
University of San Diego +
University of San Francisco +
University of Southern California
University of Utah
University of Vermont
University of Virginia
University of Washington-Seattle Campus
University of Wisconsin - Madison
Utah Tech University
Vanderbilt University
Villanova University
Virginia Military Institute
Washington State University
Washington University in St Louis
Wesleyan University
Westmont College
William and Mary College

BY THE NUMBERS

15:1

STUDENT-TO-TEACHER
RATIO

21.5

AVERAGE CLASS SIZE

23

MEDIAN CLASS SIZE

5

MAGNET PROGRAMS

ARTS / BUSINESS
ENGINEERING / LAW / MEDICAL

83%

FACULTY HOLD
ADVANCED DEGREES

6

ACADEMIC & COLLEGE
COUNSELORS