

2018 Bond - Update

August 19, 2020

- Total Bond Expenditures Update
- Budget Update By Feeder
- Project Summary by School/Site

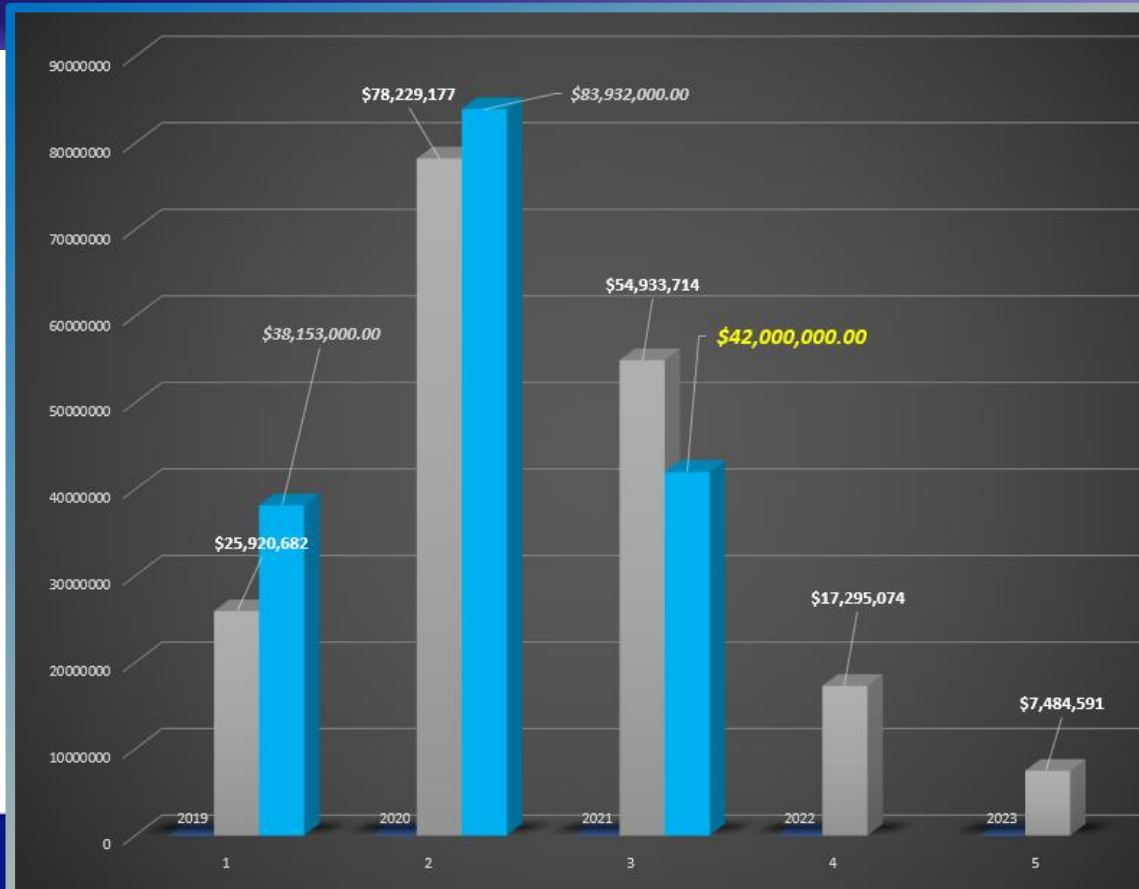


Total Bond Expenditures

Feeder	Total Bond Budget	Total Amount Encumbered
+ BHS	\$17,919,792.91	\$10,077,777.88
+ DW	\$50,511,187.56	\$23,971,130.48
+ LHS	\$21,028,141.30	\$7,670,188.73
+ MVHS	\$62,901,752.25	\$52,387,767.76
+ TVHS	\$37,819,700.50	\$28,764,278.46
Grand Total	\$190,180,574.52	\$122,871,143.31

Original Bond	\$149,000,000
Added Bond Premium	\$ 41,180,574

Cash Flow – Planned vs Actual



Berthoud High School - Feeder

Feeder	Total Bond Budget	Total Amount Encumbered
<input type="checkbox"/> BHS	\$17,919,792.91	\$10,077,777.88
Berthoud Elementary	\$5,501,926.00	\$4,416,586.36 *
Berthoud High School	\$5,348,165.00	\$1,490,124.01 *
Ivy Stockwell Elementary	\$4,163,063.50	\$3,986,821.29 *
Turner Middle School/ECE	\$2,906,638.41	\$184,246.22 *

** Roofing is tracked under District Wide summary.
(Black = 2019 Red = 2020)

Thompson Valley HS - Feeder

Feeder	Total Bond Budget	Total Amount Encumbered	
<input type="checkbox"/> TVHS	\$37,819,700.50	\$28,764,278.46	
BF Kitchen Elementary	\$2,040,018.50	\$20,640.90	*
Big Thompson Elementary School	\$1,845,474.00	\$150,798.24	*
Carrie Martin Elementary	\$1,165,537.00	\$1,021,512.85	*
Namaqua Elementary School	\$1,447,891.00	\$129,214.02	
Sarah Milner Elementary School	\$1,203,018.50	\$1,031,276.65	*
Thompson Valley High School	\$8,428,575.00	\$7,814,649.74	*
Van Buren Elementary School	\$18,389,169.00	\$18,367,731.75	*
Walt Clark Middle School	\$3,300,017.50	\$228,454.31	*

* Roofing in 2019 is tracked under District Wide summary.



Mountain View HS - Feeder

Feeder	Total Bond Budget	Total Amount Encumbered
MVHS	\$62,901,752.25	\$52,387,767.76
Conrad Ball Middle School	\$2,348,570.00	\$109,120.62 *
High Plains	\$107,205.00	\$1,088.83
Mary Blair Elementary School	\$1,593,873.50	\$115,759.12
Monroe Elementary School/ECE	\$1,883,871.25	\$1,613,202.81 *
Mountain View High School	\$5,745,465.00	\$1,617,101.58 *
New PK8	\$45,502,250.00	\$43,415,519.77
Stansberry Elementary School	\$4,448,083.50	\$4,424,301.66 *
Winona Elementary School	\$1,272,434.00	\$1,091,673.37

* Roofing in 2019 is tracked under District Wide summary.



Loveland HS - Feeder

Feeder	Total Bond Budget	Total Amount Encumbered
<input type="checkbox"/> LHS	\$21,028,141.30	\$7,670,188.73
Bill Reed Middle School	\$2,840,277.75	\$158,350.27 *
Centennial Elementary School	\$1,081,133.50	\$132,647.90 *
Cottonwood Elementary School	\$1,235,504.50	\$86,818.90 *
Coyote Ridge Elementary School	\$847,113.50	\$85,559.47
Garfield Elementary	\$1,588,793.50	\$256,866.52 *
L. Edmondson Elementary/ECE	\$1,160,290.25	\$189,781.87 *
Lincoln Elementary School	\$1,049,123.50	\$295,131.24 *
Loveland High School	\$6,656,087.80	\$6,117,671.45 *
Lucile Erwin Middle School	\$2,300,177.50	\$95,568.35 *
Ponderosa Elementary School	\$746,421.00	\$179,044.40
Truscott Elementary School	\$1,523,218.50	\$72,748.36 *

* Roofing in 2019 is tracked under District Wide summary.

District Wide - Summary

Feeder	Total Bond Budget	Total Amount Encumbered
<input type="checkbox"/> DW	\$50,511,187.56	\$23,971,130.48
Bond Contingency	\$11,213,184.89	\$0.00
Bond Inflation	\$2,689,080.03	\$0.00
Bond Management	\$3,443,915.93	\$513,159.08
Charter Schools	\$1,300,000.00	\$1,000,947.33
Community Connections	\$386,296.75	\$24,123.83
District Wide Furniture	\$4,972,500.00	\$624,982.88
Environmental	\$1,235,120.96	\$271,480.00
Ferguson High School	\$915,727.50	\$14,156.53
Roofing	\$11,157,097.00	\$10,010,811.90
Security	\$5,765,000.00	\$5,651,055.34
Support Buildings/DW Projects/IT	\$7,433,264.50	\$5,860,413.59

25 Facilities with Bond Work in 2020!

Roof Repair / Replacement: 13 sites – TO BE FINISHED THIS MONTH

Renovations / Other Bond Work: 12 ES, 3 MS, 5 HS

Continued Large Scale Bond Work:

- ECE at Stansberry – Phase I/II complete. Phase III- GRANT CONTINUES
- TCC / FHS at Van Buren - COMPLETE
- Riverview PK-8 broke ground in January 2020 – DRY IN BY NOVEMBER
- Security Upgrades: Card Access / Cameras – SCHOOLS COMPLETE
- Berthoud and Ivy Elementary Schools – Additions - COMPLETE

Other projects:

- Furniture Refresh – 10 sites by fall – DELIVERIES SCHEDULED
- Cooler/Freezer – COMPLETES SEPTEMBER
- Facilities Move to Administration - SEPTEMBER

PLANNING – 2021 Projects

Close out 2020 projects – Update green check marks, budgets closed, lessons learned, warranty process begins.

2021 –

- To BOE in September with all budgets for review
- Staff project assignments
- Design meetings underway, DAGs to be formed

COMMUNICATIONS / Website – Continued maintenance

- Financial updates
- Pictures / Videos
- CBOC – email and Q/A
- Tours – BOE/CBOC/Staff (COVID19 dependent)
- Mailer – information for Communications



COVID19 - Summary

Impacts to date:

- Some materials delayed
- Workers testing positive – process
- Permits – state issued



Impacts anticipated moving forward:

- Able to access buildings = positive
- Continued monitoring of materials/labor changes
- Contingency planning for changes to building access and industry impacts

Thompson Career Campus / Ferguson HS



#WeAreThompson

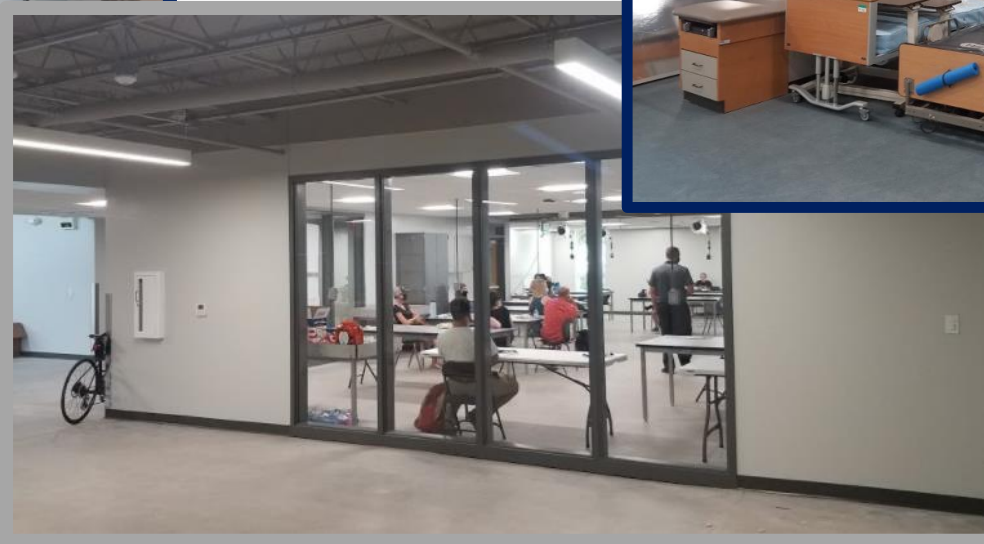
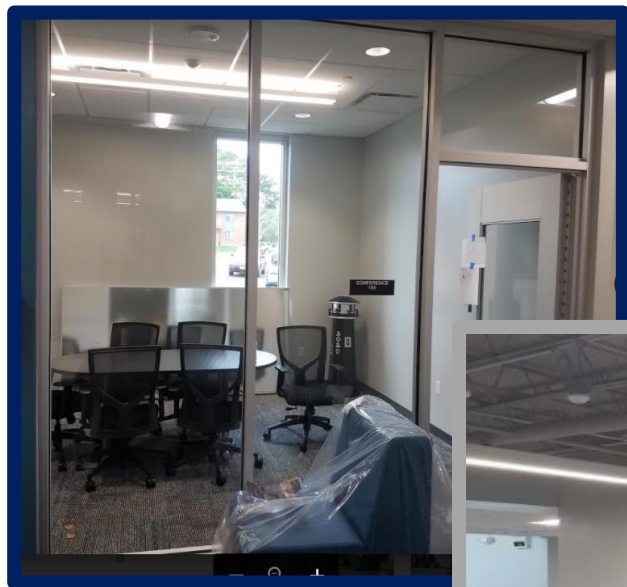


Thompson Career Campus / Ferguson HS



www.thompsonschoools.org

Thompson Career Campus / Ferguson HS



www.thompsonschoools.org

#WeAreThompson



ECE @ Stansberry

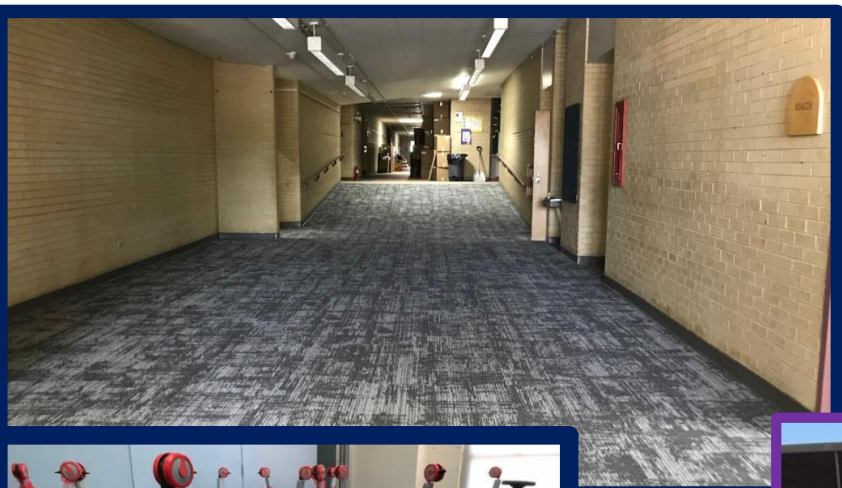


ECE at Stansberry



Berthoud / Ivy ES - Additions

Berthoud ES



Ivy ES



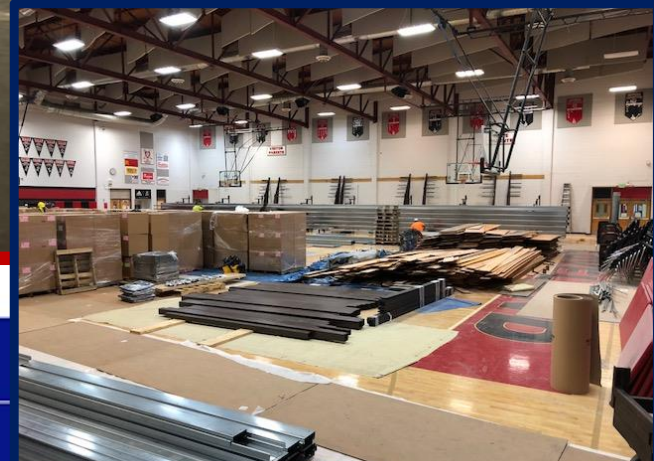
Riverview PK-8



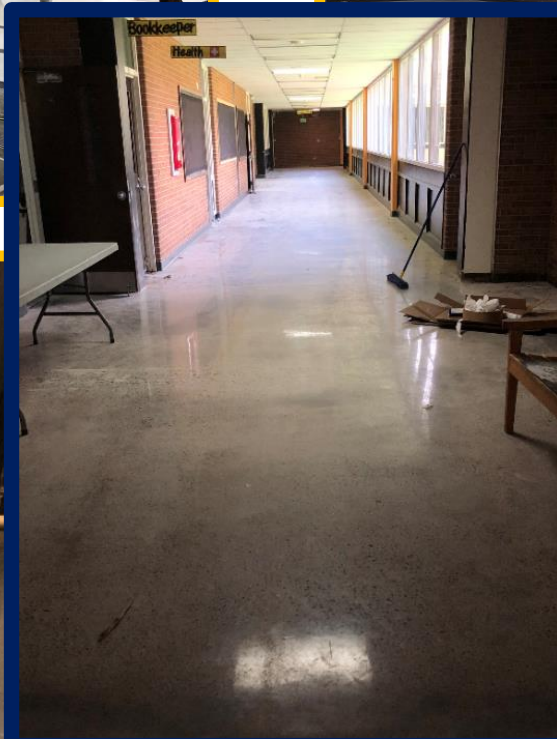
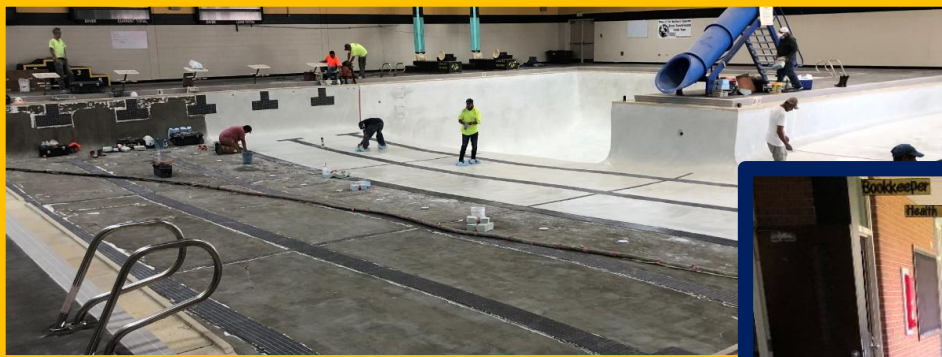
Riverview PK-8



Loveland High School



Thompson Valley High School



Ray Patterson Stadium



Monroe & Winona Elementary Schools



Monroe ES



Winona ES



Support Services Center – Freezer/Cooler

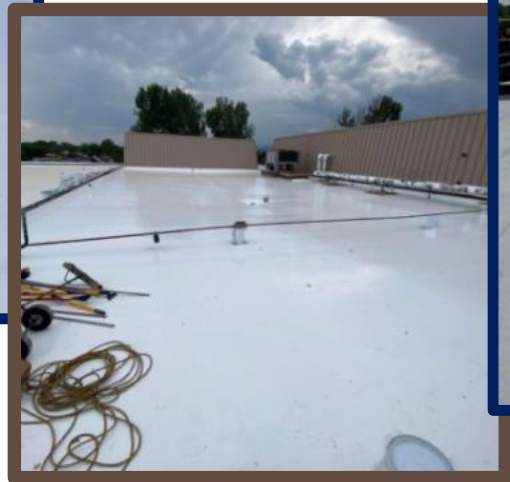


Roofing Projects



ECE

TVHS



Riverview

Garfield ES



BOE TOURS THIS SUMMER

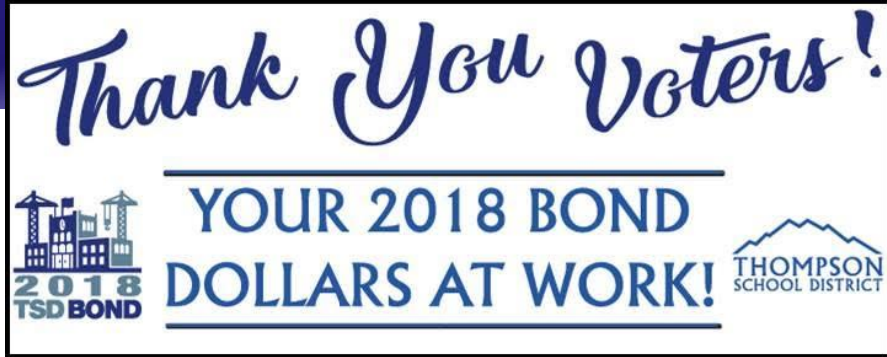
LAND and CONSTRUCTION



BOE TOURS THIS SUMMER

CONSTRUCTION – TCC/FHS and ECE @ Stansberry





- BOE for your time, support, and guidance!
- Community for your support!
- Principals / site staff for your cooperation!
- District Support Staff – for expertise and collaboration!

*For flexibility during COVID19!
We are all in this together!*