

2018 Bond - Update

November 20, 2019

- Total Bond Expenditures Update
- Budget Update By Feeder
- Project Update By Feeder



Total Bond Expenditures

Feeder and Location	Adjusted Total Budget	Total Amount Encumbered
▣ BHS	\$13,996,743	\$329,995
▣ DW	\$49,523,232	\$12,891,035
▣ LHS	\$18,185,380	\$1,177,970
▣ MVHS	\$59,310,662	\$4,860,251
▣ TVHS	\$32,199,004	\$2,634,039
Grand Total	\$173,215,021	\$21,893,290

Original Bond \$149,000,000
 Added Bond Premium \$24,215,020
 (Bond Premium to date for CTE/Ferguson, ECE, Ray Pat Field, Contingency)



Berthoud High School - Feeder

Feeder and Location	Adjusted Total Budget	Total Amount Encumbered
<input type="checkbox"/> BHS	\$13,996,743	\$329,995
Berthoud Elementary	\$4,774,051	\$50,467 *
Berthoud High School	\$3,246,540	\$133,096 *
Ivy Stockwell Elementary	\$3,615,964	\$58,515
Turner Middle School/ECE	\$2,360,188	\$87,917 *

* Roofing in 2019 is tracked under District Wide summary.



Berthoud High School – Work in Feeder

Berthoud ES:

Door hardware, Custodial Equipment, HVAC/mini-split, ACM/lead paint inspection, Geotech/Survey, Roofing

Berthoud HS:

Door hardware, Custodial Equipment, HVAC/mini-split, Roofing

Ivy ES:

Door hardware, Custodial Equipment, Storage unit, ACM/lead paint inspection, Geotech/Survey

Turner MS:

Door hardware, Custodial Equipment, HVAC/mini-split, ACM/lead paint inspection, Roofing



Thompson Valley HS - Feeder

Feeder and Location	Adjusted Total Budget	Total Amount Encumbered
TVHS	\$32,199,004	\$2,634,039
BF Kitchen Elementary	\$1,519,269	\$17,726 *
Big Thompson Elementary School	\$1,820,901	\$52,783 *
Carrie Martin Elementary	\$896,237	\$30,684 *
Namaqua Elementary School	\$1,239,516	\$100,823
Sarah Milner Elementary School	\$743,144	\$48,764 *
Thompson Valley High School	\$6,528,570	\$178,604
Van Buren Elementary School	\$16,450,000	\$1,985,970
Walt Clark Middle School	\$3,001,368	\$218,684

* Roofing in 2019 is tracked under District Wide summary.



Thompson Valley HS – Work in Feeder

BF Kitchen ES: Custodial Equipment, HVAC/mini-split, ACM/lead paint inspection, Roofing

Big T ES: Door hardware, Custodial Equipment, HVAC/mini-split, ACM/lead paint inspection, Roofing, Septic pumps

Carrie Martin ES: Door hardware, Custodial Equipment, Roofing, HVAC unit

Namaqua ES: Door hardware, Custodial Equipment, ACM/lead paint inspection, Playground surfacing, HVAC unit

Sarah Milner ES: Door hardware, Custodial Equipment, ACM/lead paint inspection, Roofing

TVHS: HVAC/mini-split, ILLC program, Survey

Van Buren ES: ACM/lead paint inspection, CTE/FHS Renovation, Survey, Traffic Study, Abatement

Walt Clark MS: Door hardware, Custodial Equipment, HVAC/mini-split, ACM/lead paint inspection, Sierra School



Mountain View HS - Feeder

Feeder and Location	Adjusted Total Budget	Total Amount Encumbered
MVHS	\$59,310,662	\$4,860,251
Conrad Ball Middle School	\$2,325,545	\$101,055
High Plains	\$70,455	\$1,089
Mary Blair Elementary School	\$1,558,749	\$74,770
Monroe Elementary School/ECE	\$1,680,746	\$208,661
Mountain View High School	\$4,497,473	\$149,489 *
New PK8	\$43,533,250	\$2,843,932
Stansberry Elementary School	\$4,448,084	\$1,407,071
Winona Elementary School	\$1,196,361	\$74,185

* Roofing in 2019 is tracked under District Wide summary.



Mountain View HS – Work in Feeder

Conrad Ball MS: Door hardware, Custodial Equipment, ACM/lead paint inspection, Fire alarm panel

Mary Blair ES: Door hardware, Custodial Equipment, HVAC/mini-split, Playground surfacing

Monroe ES: Door hardware, Custodial Equipment, HVAC/mini-split, ACM/lead paint inspection, Playground surfacing, Survey, Geotech

MVHS: Door hardware, Custodial Equipment, HVAC/mini-split, 4 rooms furniture, Blast chiller

New PK8: Design, Survey, Appraisal, Geotech

Stansberry ES: Custodial Equipment, ACM/lead paint inspection, Survey, Appraisal, ECE renovation, Geotech

Winona ES: Door hardware, Custodial Equipment, ACM/lead paint inspection, Survey, Geotech, HVAC unit



Loveland HS - Feeder

Feeder and Location	Adjusted Total Budget	Total Amount Encumbered
LHS	\$18,185,380	\$1,177,970
Bill Reed Middle School	\$2,547,728	\$99,724
Centennial Elementary School	\$815,009	\$124,798 *
Cottonwood Elementary School	\$1,229,255	\$79,350
Coyote Ridge Elementary School	\$768,364	\$49,162
Garfield Elementary	\$1,131,044	\$123,852
L. Edmondson Elementary/ECE	\$1,123,590	\$151,730 *
Lincoln Elementary School	\$943,124	\$68,573
Loveland High School	\$5,152,827	\$194,779
Lucile Erwin Middle School	\$2,322,303	\$95,393 *
Ponderosa Elementary School	\$687,671	\$152,069
Truscott Elementary School	\$1,464,469	\$38,538

* Roofing in 2019 is tracked under District Wide summary.



Loveland HS – Work in Feeder

Bill Reed MS: Door hardware, Custodial Equipment, Fire Alarm Panel

Centennial ES: Door hardware, Custodial Equipment, HVAC/mini-split, Roofing, Playground surfacing

Cottonwood ES: Door hardware, Custodial Equipment, HVAC/mini-split

Coyote Ridge ES: Door hardware, Custodial Equipment

Garfield ES: Door hardware, Custodial Equipment, ACM/lead paint inspection, Playground surfacing, Survey/Geotech, Site Design

L. Edmondson ES: Door hardware, Custodial Equipment, HVAC/mini-split, Roofing, Playground surfacing

Lincoln ES: Door hardware, Custodial Equipment, ACM/lead paint inspection, HVAC unit, Survey/Geotech, Site Design

LHS: Door hardware, Custodial Equipment, HVAC/mini-split, ACM/lead paint inspection, Survey/Geotech, Design

Lucille Erwin MS: Door hardware, Custodial Equipment, Roofing, Blast Chiller, HVAC unit

Ponderosa ES: Door hardware, Custodial Equipment

Truscott ES: Door hardware, Custodial Equipment



District Wide - Summary

Feeder and Location	Adjusted Total Budget	Total Amount Encumbered	
DW	\$49,523,232	\$12,891,035	
Bond Contingency	\$12,862,185	\$0	
Bond Inflation	\$6,097,080	\$0	
Bond Management	\$3,443,916	\$390,801	*Salary, vehicle, supplies, equipment
Charter Schools	\$1,300,000	\$226,707	*New Vision
Community Connections	\$386,297	\$1,089	*Signage
Environmental	\$2,269,290	\$271,480	*ACM/lead testing
Ferguson High School	\$915,728	\$14,157	*Custodial Equipment
Roofing	\$11,157,097	\$5,606,594	*All 2019 roof projects
Security	\$5,045,000	\$4,984,672	*Access control/video
Support Buildings/DW Projects/IT	\$6,046,640	\$1,395,536	*LS reno, Custodial Equip, IT program, Survey/Geotech, Design



Thompson Career Campus / Ferguson HS



Groundbreaking

October 1, 2019



www.thompsonschoools.org

#WeAreThompson



Thompson Career Campus / Ferguson HS



Before and Current



www.thompsonschoools.org

#WeAreThompson



Thompson Career Campus / Ferguson HS



Demolition

Foundation - Footings



www.thompsonschoools.org

Thompson Career Campus / Ferguson HS



**Demolition and
Abatement**



www.thompsonschoools.org

#WeAreThompson



New PK8 – East Elevation/Main Entry



www.thompsonschoools.org

#WeAreThompson



New PK8 – West Elevation



New PK8 – North Elevation



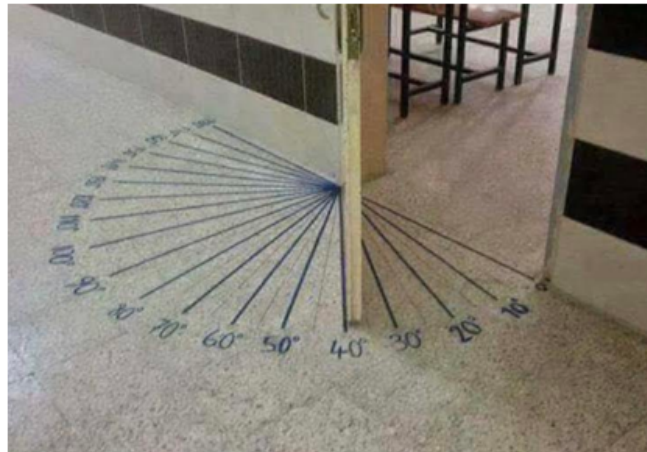
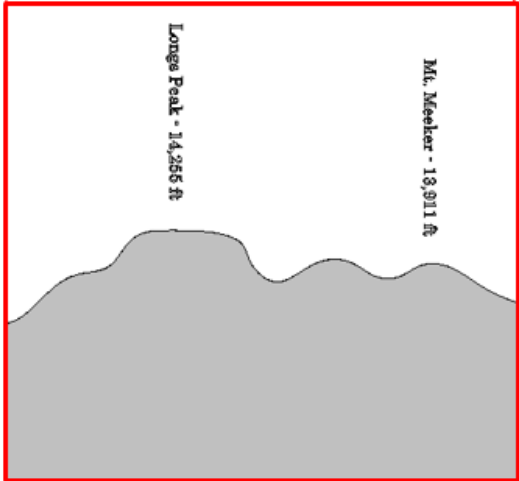
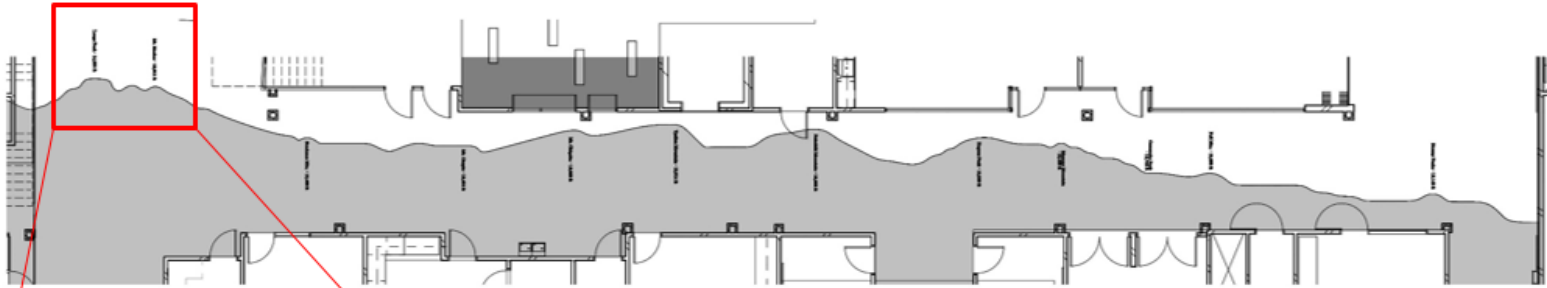
THOMPSON
SCHOOL DISTRICT

www.thompsonschoools.org

#WeAreThompson



New PK8 – Buildings That Teach



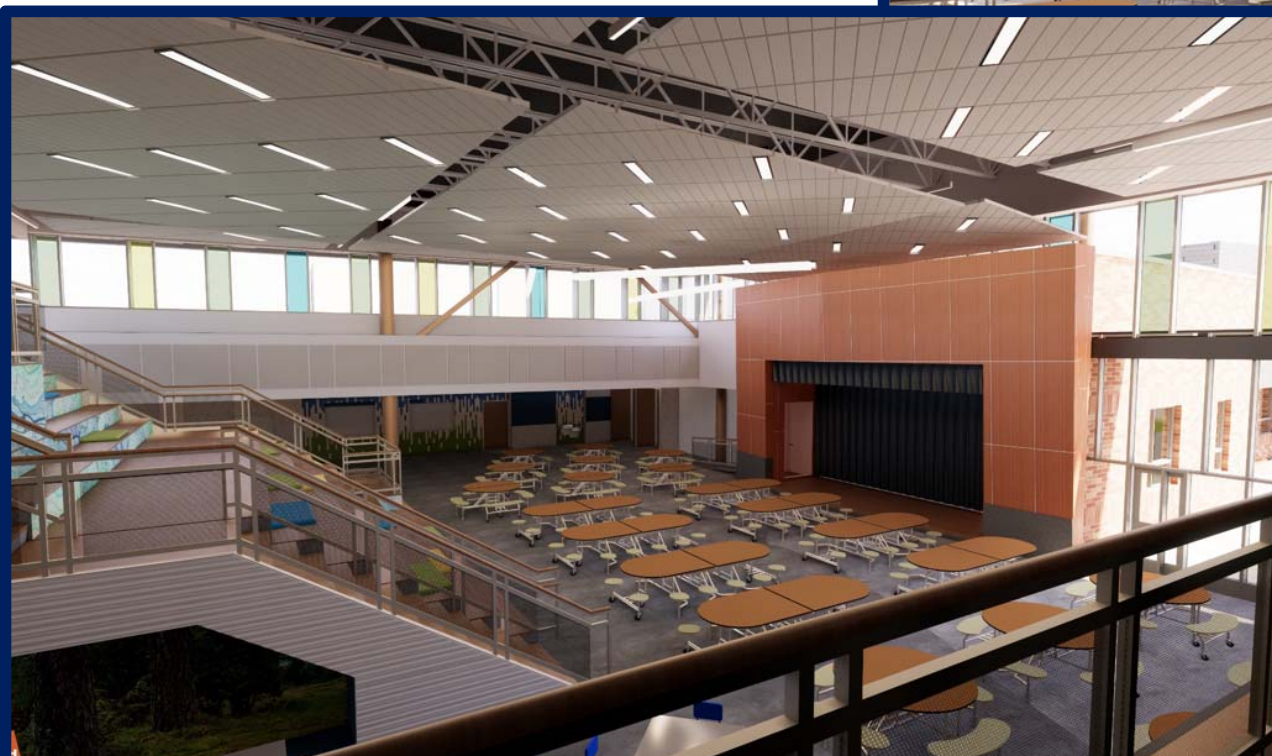
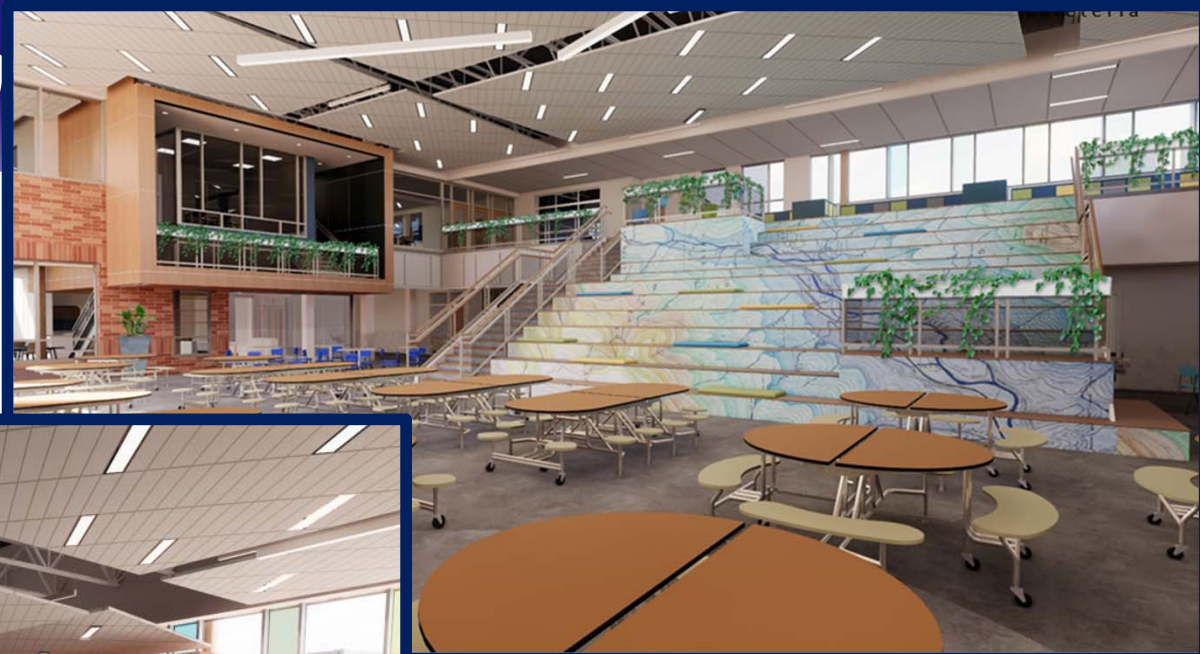
**Virtual Reality
Tour!**



New PK8 – Interior Collaboration Space



New PK8 - Common



#WeAreThompson



New PK8 - Gymnasium

- ✓ Graphics to be finalized with school naming and mascot/color selections in the spring.



Security – Video/Access Control

- ✓ Work commenced in 17 Elementary Schools
- ✓ Work has started in all 4 High Schools
- ✓ On schedule for substantial completion in all schools by January 2020



Community / Planning Meetings

- ✓ 4 Feeder System Community meetings have been conducted
- ✓ PK8 Community meeting was on 11/11/19
- ✓ DAG meetings for all 2020 projects have been held



#WeAreThompson



2020 Projects

Roof Repair/Replacement: 11 sites planned.

Renovation / Bond Work:

- ES: 8 Elementary Schools
- HS: 3 High Schools.

Continued Bond Work:

- ECE at Stansberry.
- TCC/FHS at VB.
- PK8 will start in 2020. Groundbreaking on March 9th.



Thank You Voters!



**YOUR 2018 BOND
DOLLARS AT WORK!**



- BOE for your time and guidance!
- Community for your support!
- Principals/site staff for cooperation!

Virtual Tours of the New PK8

INTERIOR: <https://www.youtube.com/watch?v=NPwZ76MTSF0>

EXTERIOR: <https://www.youtube.com/watch?v=pl-8SSTYJ58&feature=youtu.be>

