

2018 Bond - Update

August 7, 2019

- Total Bond Expenditures Update
- Update By Feeder
- Photo Summary – Summer Work



Total Bond Expenditures

Feeder and Location	Adjusted Total Budget	Total Amount Encumbered
+ BHS	\$13,996,743	\$191,610
+ DW	\$44,368,632	\$7,799,624
+ LHS	\$17,054,337	\$665,053
+ MVHS	\$58,965,262	\$4,121,522
+ TVHS	\$32,430,047	\$1,679,362
+ (blank)		
Grand Total	\$166,815,021	\$14,457,172

Original Bond \$149,000,000
 Added Bond Premium \$17,815,021
(Bond Premium to date for CTE/Ferguson and ECE)



Berthoud High School - Feeder

Feeder and Location	Adjusted Total Budget	Total Amount Encumbered
BHS	\$13,996,743	\$191,610
Berthoud Elementary	\$4,774,051	\$46,549 *
Berthoud High School	\$3,246,540	\$68,922 *
Ivy Stockwell Elementary	\$3,615,964	\$36,775
Turner Middle School/ECE	\$2,360,188	\$39,364 *
Grand Total	\$13,996,743	\$191,610

* Roofing in 2019 is tracked under District Wide summary.

Thompson Valley HS - Feeder

Feeder and Location	Adjusted Total Budget	Total Amount Encumbered
TVHS	\$32,430,047	\$1,679,362
BF Kitchen Elementary	\$1,519,269	\$7,069 *
Big Thompson Elementary School	\$1,820,901	\$36,420 *
Carrie Martin Elementary	\$896,237	\$28,779 *
Garfield Elementary	\$1,131,044	\$82,550
Namaqua Elementary School	\$1,239,516	\$91,046
Sarah Milner Elementary School	\$743,144	\$40,414 *
Thompson Valley High School	\$5,628,570	\$8,921
Van Buren Elementary School	\$16,450,000	\$1,203,684
Walt Clark Middle School	\$3,001,368	\$180,478
Grand Total	\$32,430,047	\$1,679,362

* Roofing in 2019 is tracked under District Wide summary.

Mountain View HS - Feeder

Feeder and Location	Adjusted Total Budget	Total Amount Encumbered
■ MVHS	\$58,965,262	\$4,121,522
Conrad Ball Middle School	\$2,325,545	\$64,869
High Plains	\$70,455	\$1,089
Mary Blair Elementary School	\$1,558,749	\$72,464
Monroe Elementary School/ECE	\$1,680,746	\$111,874
Mountain View High School	\$4,497,473	\$180,879 *
New PK8	\$43,533,250	\$2,759,742
Stansberry Elementary School	\$4,102,684	\$879,621
Winona Elementary School	\$1,196,361	\$50,986
Grand Total	\$58,965,262	\$4,121,522

* Roofing in 2019 is tracked under District Wide summary.

Loveland HS - Feeder

Feeder and Location	Adjusted Total Budget	Total Amount Encumbered
LHS	\$17,054,337	\$665,053
Bill Reed Middle School	\$2,547,728	\$58,921
Centennial Elementary School	\$815,009	\$115,489 *
Cottonwood Elementary School	\$1,229,255	\$77,043
Coyote Ridge Elementary School	\$768,364	\$40,986
L. Edmondson Elementary/ECE	\$1,123,590	\$78,599 *
Lincoln Elementary School	\$943,124	\$27,984
Loveland High School	\$5,152,827	\$132,612
Lucile Erwin Middle School	\$2,322,303	\$60,986 *
Ponderosa Elementary School	\$687,671	\$42,069
Truscott Elementary School	\$1,464,469	\$30,362
Grand Total	\$17,054,337	\$665,053

*Roofing in 2019 is tracked under District Wide summary.

District Wide - Summary

Feeder and Location	Adjusted Total Budget	Total Amount Encumbered
■ DW	\$44,368,632	\$7,799,624
Bond Contingency	\$7,462,185	\$0
Bond Inflation	\$6,097,080	\$0
Bond Management	\$3,443,916	\$158,087
Charter Schools	\$1,200,000	\$226,707
Community Connections	\$386,297	\$1,089
Environmental	\$2,269,290	\$271,480
Ferguson High School	\$1,165,728	\$5,981
Roofing	\$11,502,497	\$5,575,561
Security	\$4,095,000	\$371,850
Support Buildings/DW Projects/IT	\$6,746,640	\$1,188,869
Grand Total	\$44,368,632	\$7,799,624



Roofing Projects

Bond Work

New roofing - nearly \$6,000,000 of roofing completed this summer



THOMPSON
SCHOOL DISTRICT

#WeAreThompson

www.thompsonschoools.org



New ECE Center at Stansberry - Phase 1 including 5 classrooms. New playground and Offices for ECE will be completed next week.



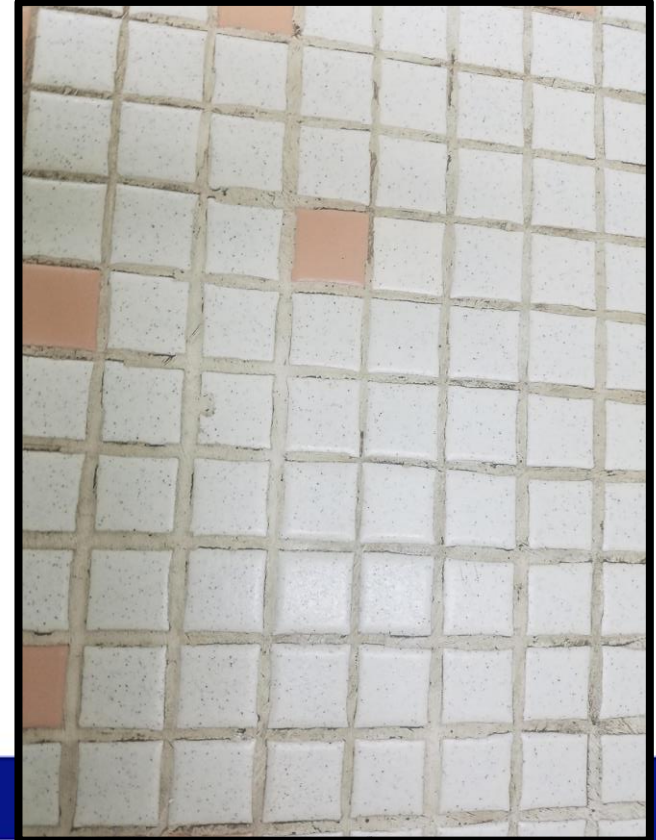
Stansberry - ECE

Bond Work



Custodial Equipment

Bond Work



Other Projects - Status

- CTE/Ferguson at Van Buren
- New PK8
- Signs at Schools



Coordination / Planning

- Budget Reconciliation
- Purchasing coordination
- Inclusion of Bond Premium Work
- 2020 Project Teams
- Bond Team

Thank You Voters!

- BOE for your time and guidance!
- Community for your support!