

June 5, 2019



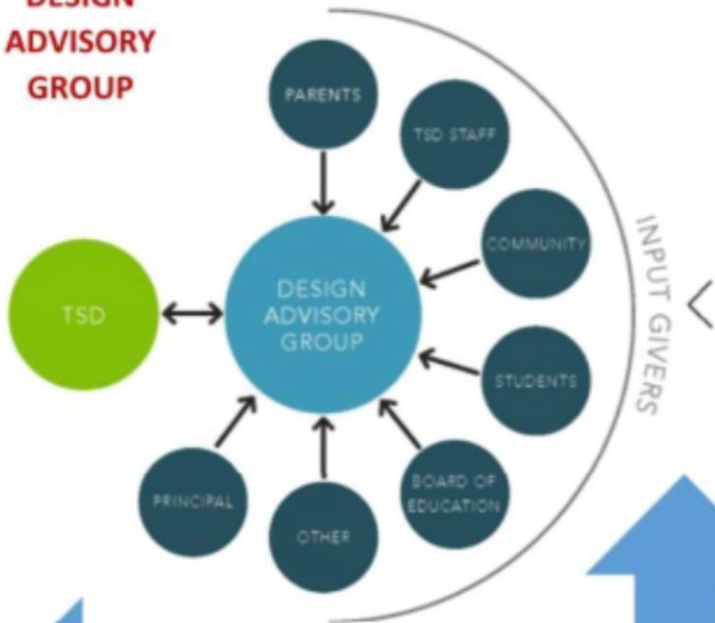
# 2018 Bond

**Early Childhood Education  
@ Stansberry ES  
&  
Career & Technical Education/Ferguson HS  
@ Van Buren ES**

Schematic Design - Review

# DESIGN PROCESS SUMMARY

## DESIGN ADVISORY GROUP



## FOCUS GROUP MEETINGS

### TYPICAL INPUT/RESOURCES

- District Administration
- Teachers
- Para Professionals
- Volunteers
- Site Administration
- Students
- Maintenance Personnel
- Food Service
- Grounds
- Community Groups
- Boosters
- Parents
- Senior Citizens
- Others

## DESIGN TEAM MEETINGS

- 4 Facilities
- 3 Bond Team
- Todd Piccone
- Architect

### ECE

Lamb Caro

### CTE/FHS

Jason Germain

Steve Moos

## OTHER ACTIVITY:

- Stakeholders
- Departments
- Site staff
- Movers
- Furniture
- Playgrounds
- Codes
- Industry
- School Districts
- Contractors
- Architects
- Trades
- Materials

## INFORMATION FLOW

CBOC  
CITIZEN'S  
BOND  
OVERSIGHT  
COMMITTEE

BAC  
BOND  
ADVISORY  
COMMITTEE

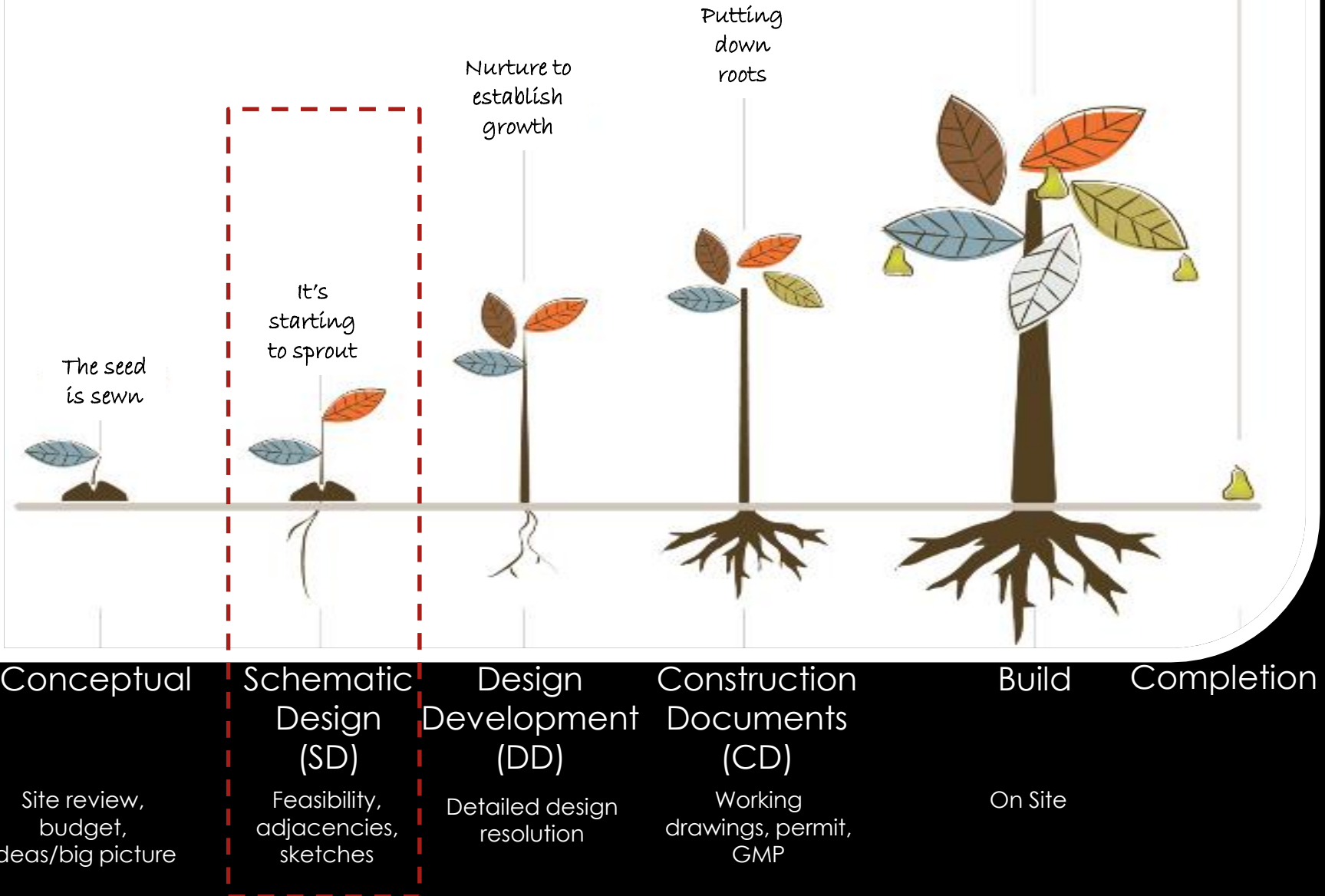
### BOE

- Updates
- Special Meetings

# Design Phases

See it blossom!

The fruits of our labor are evident!



# Early Childhood Education @ Stansberry ES

## Schedule Summary (Phase I):

- ✓ Community Meeting
- ✓ DAG – 4 meetings
- ✓ Design Meetings – 30+
- ✓ Regulatory Meetings – 10+
- ✓ May 30, 2019: Submit to State for permit – Phase I CD
- ✓ June 3, 2019: Mobilize, stage, coordination
- ✓ June 10, 2019: Demolition starts / rolls to construction
- ✓ July 29, 2019: Move ECE staff from Administration
- ✓ August 6, 2019: Licensing / State Inspections

## Schedule Summary (Phase II):

- ✓ August 2019 thru August 2020: Complete total building renovation



Phase I – Building Modifications

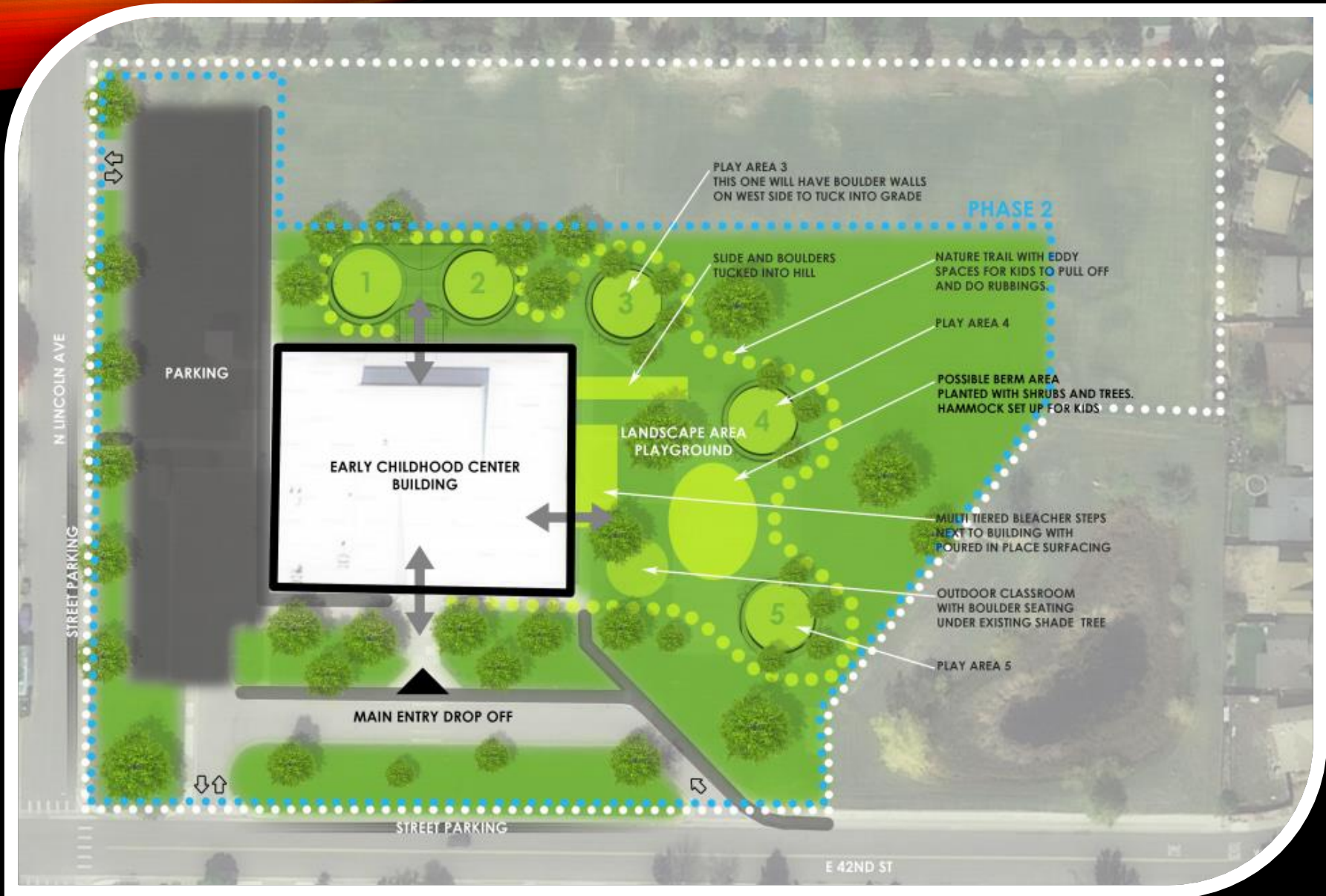




Phase I – site plan/staging

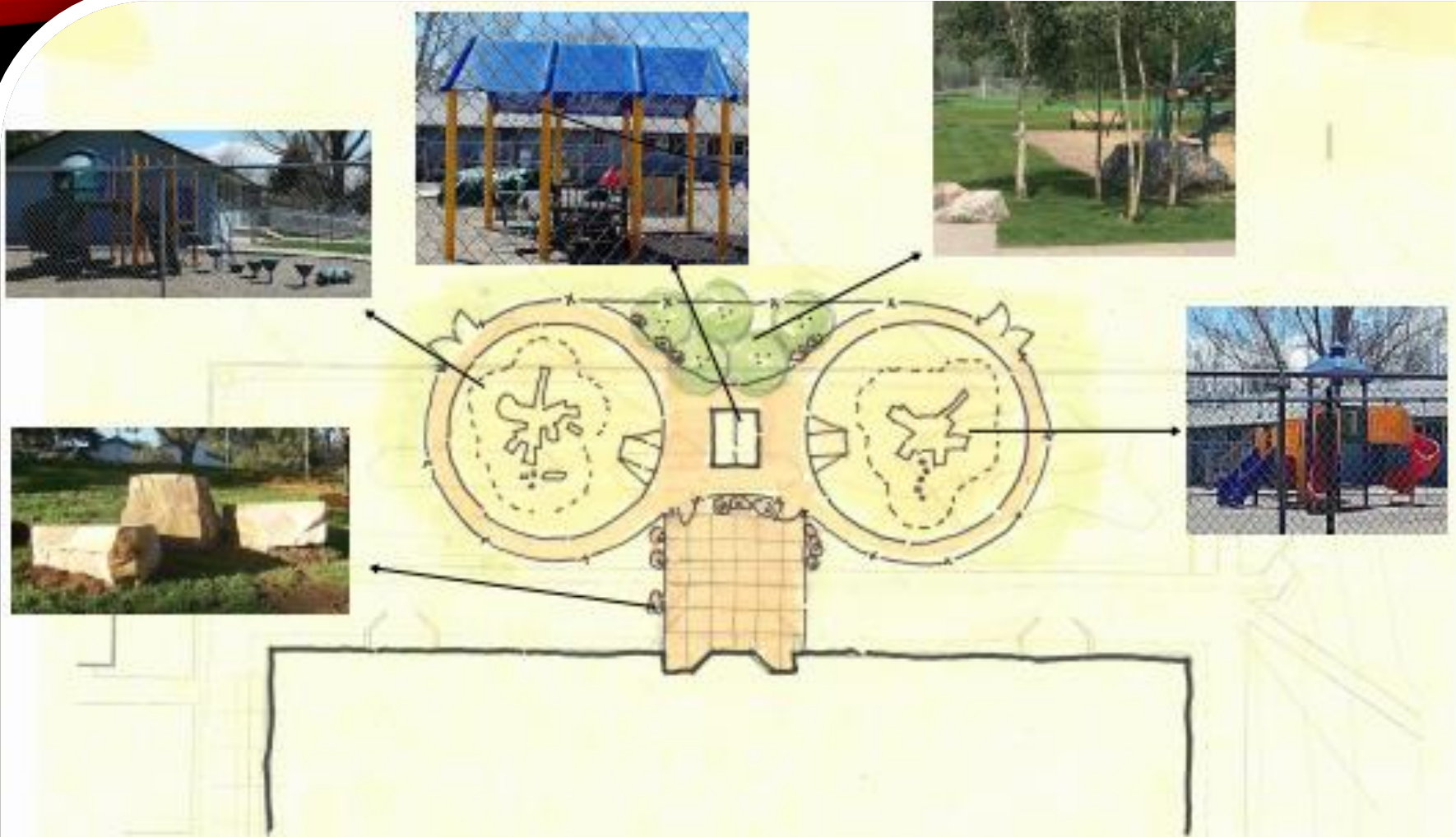






Phase II – site plan





Phase I – Playground

ECE @ Stansberry ES



**DAG / Community Input**





CONCEPTUAL



ECE @  
Stansberry ES



# Career & Technical Education @ Van Buren ES

## Schedule Summary:

- ✓ Community Meeting
- ✓ DAG – 4 meetings
- ✓ Design Meetings – 30+
- ✓ Regulatory Meetings – 5+
- ✓ Student and Staff meetings – 40+ participants
- ✓ May/June 2019: Design Development
- ✓ July/August 2019: Construction Documents
- ✓ August 2019 – August 2020: Complete total building addition and renovation





Remodel and Addition – Building Use Plan



Landscape Site Plan

CTE @ Van Buren ES



Entry Rendering



Assembly Area – Entry



# THANK YOU!

- ✓ BOE for your time
- ✓ Community for your support

