

TULSA PUBLIC SCHOOLS

Citizen Bond Oversight Committee September 12, 2023

Greg Shaw, Chairperson

TPS Staff:

Chris Hudgins, Exec. Dir. Bond

Ellen Duecker, Bond Project Mgr.

Maddie Carter, Admin. Asst.



TULSA PUBLIC SCHOOLS

Citizen Bond Oversight Committee

Progress Report

October 2, 2023

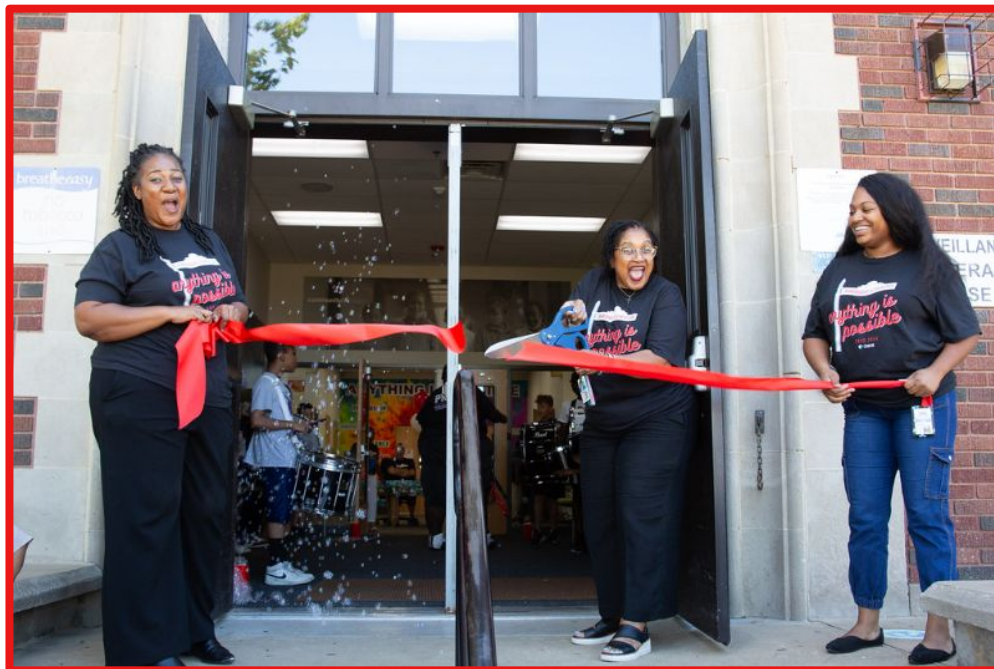
Gregory Shaw, Chairperson

2021 Bond



Today's Agenda

- Welcome & Introductions: Greg Shaw
- Meet Burroughs Principal, Dee Tisdale
- Approval of minutes
- Bond Projects Reporting: Staff
 - Bond status
 - Summer projects report
- Adjourn
- Tour Burroughs
- Next meeting: November 14, 2023 at Hale Senior High





Authorized: \$414MM

Received: \$192.5MM

Remaining: \$221.5MM

Next Bond Release:
March, 2024

Growth: Net evaluations
have increased!

**2021 Bond
Progress:
Budget**

**46% funds
received**

**6.5 years for
project
completion**



MANAGING DEPARTMENT	PROJECT DESCRIPTION	AVAILABLE (UNSPENT) BUDGETS
ACADEMICS	INSTRUCTIONAL LEARNING RESOURC	1,156,428.69
	TEXTBOOKS & LEARNING MATERIALS	4,617,837.33
	EXCEPTIONAL STUDENT/SPEC NEEDS	565,731.27
	PROF LEARNING FOR TEACHERS	850,495.86
	AUDITORIUM IMPROVEMENTS	709,664.62
	LANGUAGE LEARNING RESOURCES	148,410.67
	SCHOOL PROJECT FUNDS	3,141,773.88
	POSTSECONDARY CAREER EDUCATION	585,194.09
	EARLY CHILDHOOD EXPANSION	1,374,658.40
	PROGRAM EXPANSIONS	704,549.94
	SCOREBOARDS/SOUNDSYS REPLACMNT	5,319.36
	WELLNESS AND PE	5,499,198.89
	FINE ARTS	122,486.66
LIBRARY DIGITAL/PRINT RESOURCE	691,607.88	
TECHNOLOGY	SECURITY CENTRAL OFFICE NEEDS	1,357,978.96
	MASS COMMUNICATION AUDIO/VISUA	107,250.58
	COMPUTERS/IWB & PERIPHERALS	1,451,006.51
	ACCESS DOORS	1,203.25
	CAMERAS/RADIOS/DISPATCH	677,361.68
	ALARMS	1,786,564.07
	BOND MANAGEMENT FEES	3,143.36
	PHONE/INTERNET NEEDS	9,537.99
SOFTWARE/APPLICATION SUBSCRIPTION	542,527.98	
FACILITIES	HVAC	209,514.68
	SECURE ENTRIES & FENCING	1,928,498.55
	ACCESSIBILITY	496,040.19
	PAVING	0.00
	ROOFING	1,096,458.58
	DINING/KITCHEN IMPROVEMENTS	0.00
	FURNITURE	975,535.44
	INTERIOR RENOVATIONS	2,245,343.96
	PLANNED-UNBID/ARCHITECTS/CONTINGENCY	1,285,160.54
PROFESSIONAL SVC/BOND MNMT/ISSUANCE FEES	160,162.87	
TRANSPORTATION	SCHOOL BUSES / ROUTE MAIN	3,214,551.61

2021 Bond:
Current
Available
Funds
9/8/23



Summer Projects Report

Nonstop (almost)
9 week challenge!

2023 Summer Bond & Construction Work

School Full Building-wide Interior Renovations:

- Burroughs Elementary
- Bell Elementary

Kitchen and Dining Remodels: *(Impacted by equipment delays)*

- Memorial
- Eliot Elementary
- and renovation schools, Burroughs, Bell
- *Plus* Rogers outdoor covered dining space

Enhanced Secured School Entries Installed:

- Central Middle/High
- East Central Senior High
- Hale Senior High
- Memorial Senior High
- Memorial Middle School
- Webster Middle/High
- Alcott (North Star & Parent Resource Center)
- Tulsa MET
- Phoenix Rising
- Legacy lower and upper





2023 Summer Bond & Construction (Cont.)

Library Remodels and Refreshes:

- Central
- Webster
- Burroughs
- Carver (refresh)
- Lewis & Clark (refresh)
- Eugene Field (refresh)

Science Lab Improvements:

- Hale Senior High: electrical upgrades, flooring, painting, furniture

Various Other Construction Projects:

- East Central Middle: cafeteria expansion and locker and auditorium seat replacement
- Grissom Montessori: sink installation in 10 classrooms
- Eisenhower: roofing
- Webster, Memorial and Central: Entry rebuild





2023 Summer Bond & Construction (Cont.)

Fine Arts:

- Auditorium Improvements continue district wide including stage and house lighting and sound improvements at multiple schools.

College & Career:

- Expanded into a 2nd career construction classroom at Hale
- Webster Aquaponics/hydroponics lab construction underway

Athletics:

- Rogers visitors stands complete. Concession under construction
- Scoreboards East Central and LaFortune
- Time Clocks: McLain, BTW, Eastside, Lafortune

Academics Adoptions and Purchases:

- Secondary ELA, English language arts curriculum
- Secondary World Languages, other than English, curriculum
- Secondary ELD, English language development curriculum
- Elementary and secondary math and literacy intervention resources
- Secondary digital instructional resources



2023 Summer Bond & Construction (Cont.)



Playground Installations

- Cooper Elementary 2
- Skelly Primary
- Carnegie Elementary
- Eugene Field Elementary 2
- Salk pre-k play area

Parking Lot Resurfacing:

- Central, East Central Sr. High, Thoreau, Disney, Zarrow, Lindbergh, ESC, Greeley Legacy

Fence Replacements:

Improves safety as well as enhances appearance!

- Bell, Cooper, Grissom, Peary, Sequoyah, Patrick Henry, Carnegie, Eliot, Mitchell, Whitman, Unity.

In addition to bond funded projects: **Federally Funded HVAC Work**

- Hale Senior High School: Full HVAC System Replacement done in tandem with other bond work throughout.



Schedule & Collaboration Critical!

7 days a week!

Phases!



Carver
August 9th



Burroughs
August 9th

Bell August 8th



Schedule & Collaboration Critical!

August 1st: Hale Sr.High...

Working together to be ready for staff and students.



Working alongside school staff:

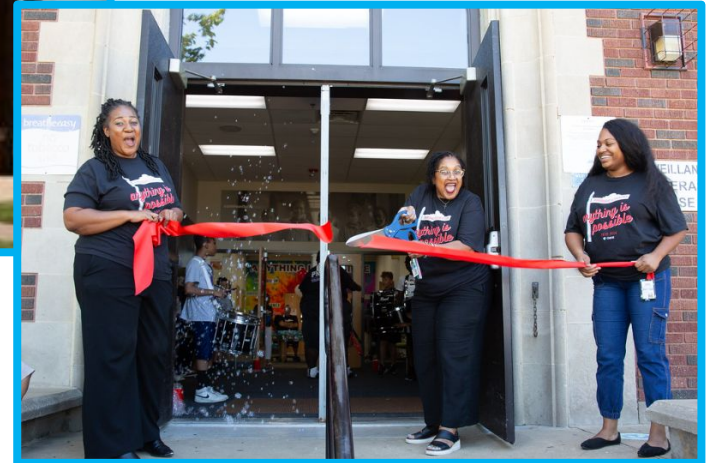
- HVAC installers
- Movers
- Glaziers
- Painters
- Plumbers
- Electricians
- Flooring installers
- Cleaners



Renovations:
Burroughs Elementary
Historic School
Revitalized!

Built in 1925

Project cost approx. \$3.5MM





Renovation: Burroughs Elementary Historic School Revitalized!

Unique challenges:
Floor & subfloor structural integrity, kitchen
rebuild to code (grease traps and exhaust),
extensive millwork replacement, creating
accessible spaces throughout.



Renovations:
Burroughs Elementary
Historic School Revitalized!



Before

Hallways



After

Renovations:
Burroughs Elementary
Historic School Revitalized!



Before

Classrooms... New
furnishings along with
interior upgrades
welcome students!

After

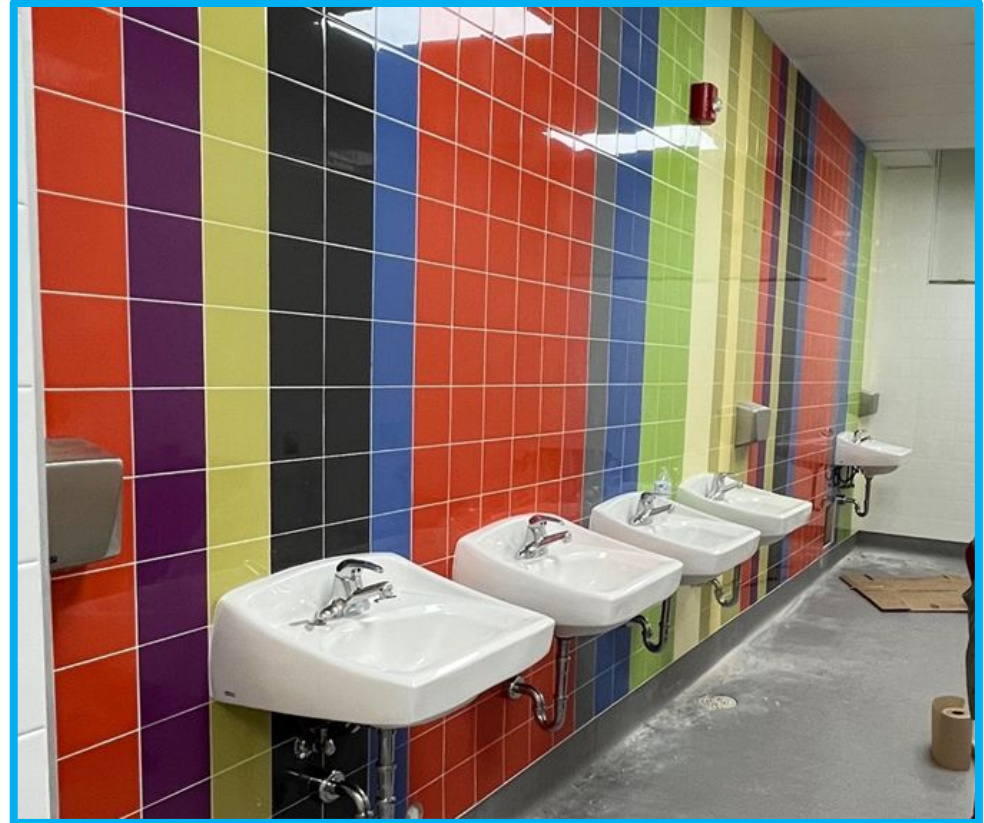


Renovations: Burroughs Elementary Historic School Revitalized!



Before

Restrooms



After

Renovation: Burroughs Elementary...Historic School Revitalized!



Renovation offers an opportunity to align spaces with program needs.

Library media center & computer lab **before** renovation.



Renovations: Burroughs Elementary

Library media center
after redesigned
into an inviting,
student-focused
learning space.





Renovations: Bell Elementary...

Newly renovated for young learners!

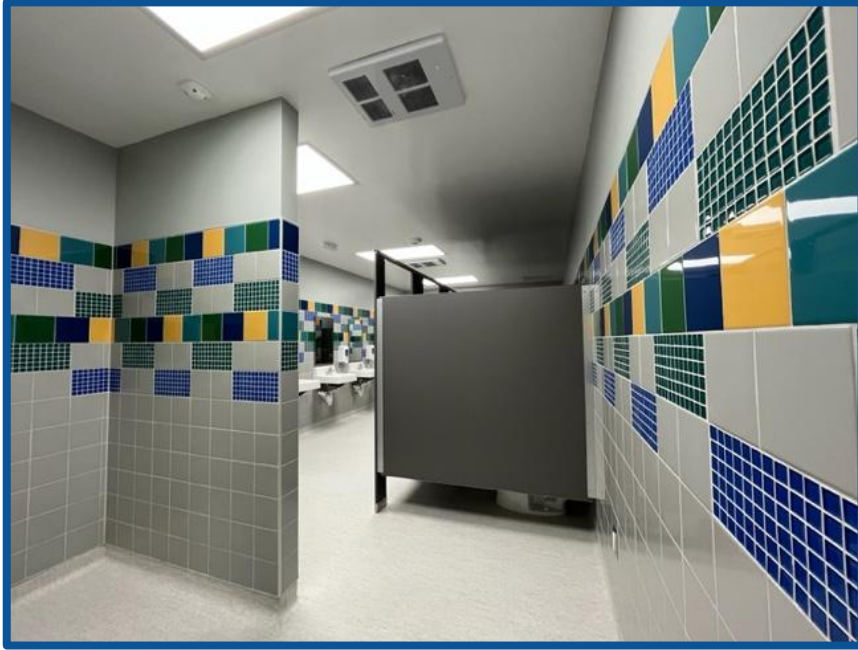
Built: 1952

Project cost \$5.5MM

Formerly a junior high, the renovation made the full transition to an elementary space for young learners. Early childhood classrooms were created in the 2015 bond. This renovation modernized the entire building.

ADA building modifications are an important focus in all construction projects. Bell is an example where they accounted for approximately 20% of construction costs.

Renovations: Bell Elementary...
Newly renovated for ALL young learners!



ADA modifications included:

Entry/exit ramps

Widening narrow doorways

Rebuilding restrooms from ground up to meet code.



Renovations: Bell Elementary... Newly renovated for young learners!



Before

Classrooms: new flooring, paint and millwork welcome students.



After

Renovations: Bell Elementary...
Newly renovated for young learners!



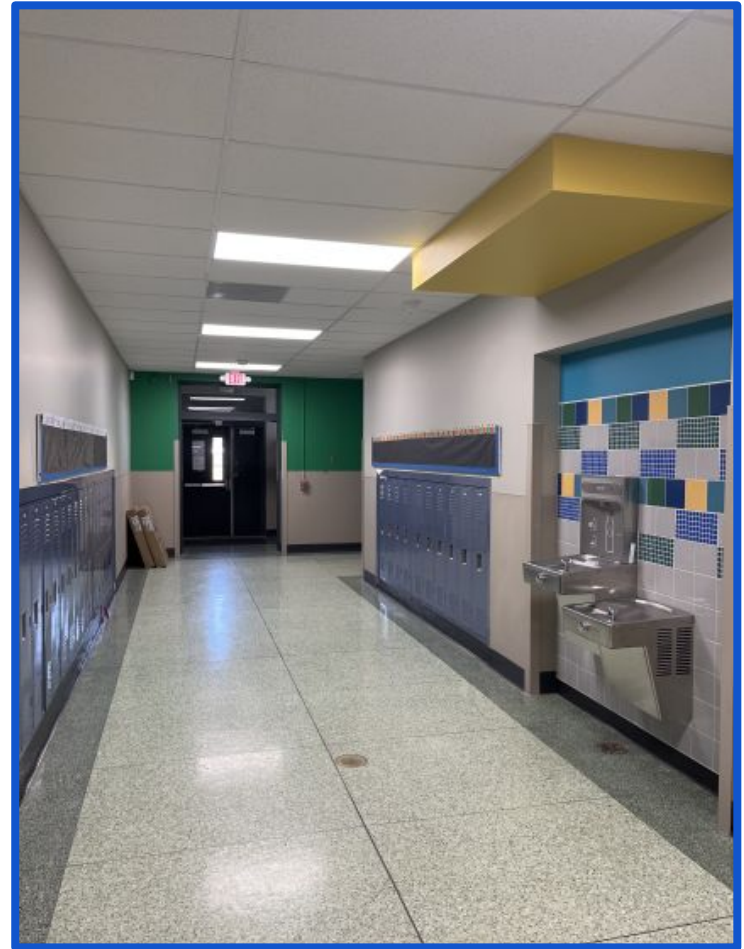
Before

Restroom



After

Renovations: Bell Elementary...
Newly renovated for young learners!



Hallways are brighter and more inviting!

Renovations: Bell Elementary... Newly renovated for young learners!



Before

Cafeteria



After

Renovations: Bell Elementary... Newly renovated for young learners!



Bell auditorium: New stage lights, electrical upgrades, paint and curtains. Sound system in progress. *More about auditoriums later...*



Kitchen Dining Renovations: Included new cooking and refrigeration equipment and serving lines.

- Eliot
- Burroughs
- Bell
- Memorial Senior

Major and minor
issues caused
delays but on
track for
completion.



Kitchen Dining Renovation: Memorial

Delayed by construction issues...

Temp serving lines as kitchen is finished





Kitchen Dining Renovations:

Rogers:

Canopy over outdoor dining area:

- Create inviting space for students almost year round
- Increases seating capacity
- Allows for 2 lunch periods

Nearly complete Target 10/1

Safety and Security: Enhanced Secured School Entries

Installed at 10 Schools this summer

Designs are customized for each site

Work typically involves a full office redesign in addition to door installation

- Central Middle/High
- East Central Senior High
- Hale Senior High
- Memorial Senior High
- Memorial Middle School
- Webster Middle/High
- Alcott (North Star/Parent Resource Center)
- Tulsa MET
- Phoenix Rising
- Legacy lower and upper



Safety and Security: Enhanced Secured School Entries Weapons Detection Systems for Secondary Schools

District team conducted research last spring and summer.

Purchased 34 portable systems that can be deployed in multiple locations around the school and the district where needed.

- 2 per high schools (main building and fieldhouse/stadium)
- 3 per grade 6-12 middle & high schools
- 1 for middle schools and alternative sites

Trainings were conducted for each school team prior to school starting.

Currently in post implementation evaluation phase

- Set-up at all our high school varsity football games
- Set-up at visitor entrances of each site
- Schools are evaluating frequency of use for continuous or intermittent monitoring at student entrances

Safety and Security: Enhanced Secured School Entries

Door access control systems: additional doors installed district-wide.

- Spring, 2023: Site visits to identify & map needs for additional door access controls.
- Playground and parking lot secondary entrances/exits.
- Costs per door range from approx. \$3500 to \$4200 per door.
- Supply chain issues are impacting installation

Phase 1

BELL
ELIOT
MCCLURE
ANDERSON
CELIA CLINTON
BURROUGHS
COOPER
PATRICK HENRY
COUNCIL OAK
DISNEY
KENDALL WHITTIER
CLINTON WEST
CARNEGIE

Phase 2

DOLORES HUERTA
EISENHOWER
MONROE
MITCHELL
KEY
JOHN HOPE FRANKLIN
GRISSOM
WALT WHITMAN
SEQUOYAH
MARSHALL
HOOVER
OWEN
SPRINGDALE
LEWIS AND CLARK
PEARY

Phase 3

EMERSON
EUGENE FIELD
FELICITAS MENDEZ
GLA
HAMILTON
HAWTHORNE
LANIER
LINDBERGH
MACARTHUR

Phase 4

MAYO
MCKINLEY
ROBERTSON
SALK
SKELLY UPPER
SKELLY LOWER
UNITY
WAYMAN TISDALE

Green indicates complete
All others are in the process of being quoted.

Secondary School Entrances

Along with enhanced secure modifications, the bond plans included updating secondary school facades to welcome students and families.

Senior Highs: East Central, Memorial, McLain, Hale

Middles: Thoreau, Memorial, Hale, East Central, Carver



Memorial Senior High Entry (*under construction*)



Central Middle High New Entrance

Webster Middle High Historic Entry..*nearly complete*



Library Renovations and Refreshes

- Central
- Webster
- Burroughs
- Carver (refresh)
- Lewis & Clark (refresh)
- Eugene Field (refresh)

Central Middle & High... School spirit reflected in design



Library Renovations and Refreshes

Webster Middle High



Honoring historic designs while creating: modern, flexible, personalized learning spaces.

Library Renovations and Refreshes

Carver refreshed with carpet, paint, millwork and soft seating.



Kendall-Whittier graphic ceiling border finishes off last summer's remodel.

*Refresh work: Lewis & Clark,
Carver, Eugene Field and Kendall
Whittier*



Playground Installations

- Cooper Elementary 2
- Skelly Primary
- Carnegie Elementary (Special needs unit)
- Eugene Field Elementary 2
- Salk pre-k play area

This completes all new playground installations!

Additional funds remain to upgrade/refresh existing playgrounds. (replace wood chips with accessible surface!)



Visitors stands open for first game!

Concession stand and restrooms in progress.



Athletics: Rogers Visitor Stands and Concessions/Restrooms



Athletics:

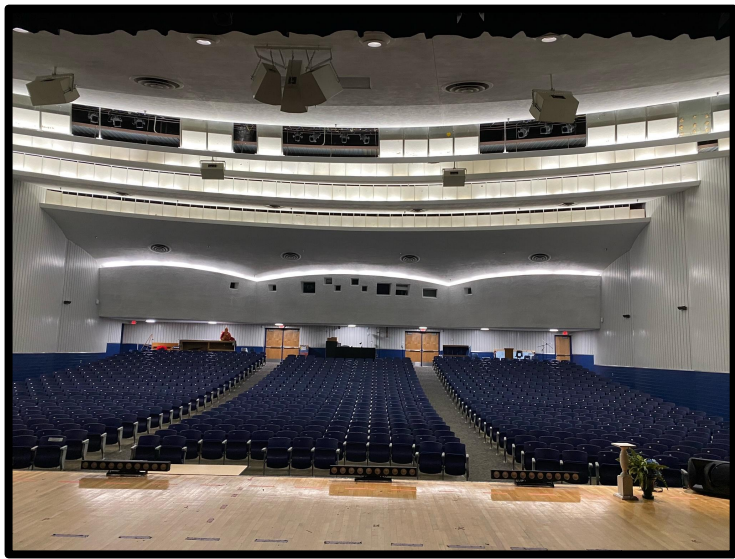
New Time Clocks & Scoreboards

Scoreboards:

- Eastside
- Lafortune

Time clocks:

- McLain
- BTW
- Eastside
- Lafortune



Fine Arts: Auditorium Improvements district-wide...lighting, sound, curtains, electrical upgrades as needed.

Investing wisely to extend systems life with IP addressing for remote control and timed system shutdown.



Fine Arts: Auditorium Improvements district-wide...

Improvements include safety upgrades to catwalks, railings and rigging.



Locking cage over catwalk ladder.



Railing along edge of orchestra pit. It never had one!

Fine Arts:
Auditorium
Improvements
district-wide

Progress to date:

25 auditoriums in
secondary and
formerly secondary
schools.

Included in FCI,
facilities condition
assessment

	Sound System	Stage Lights	Electrical Upgrades	Curtains (& rigging)
BTW	✓	95%	✓	!
Central	✓	contracted	contracted	!
E. Central Sr.	✓	✓	✓	!
Edison	✓	In progress	In progress	N/A
Hale Sr.	contracted	✓	✓	✓
McLain	✓	✓	✓	✓
Memorial Sr.	✓	In progress	In progress	
Rogers	✓	✓	✓	90%
Webster	contracted	In progress	In progress	70%

Fine Arts:
Auditorium
Improvements
district-wide

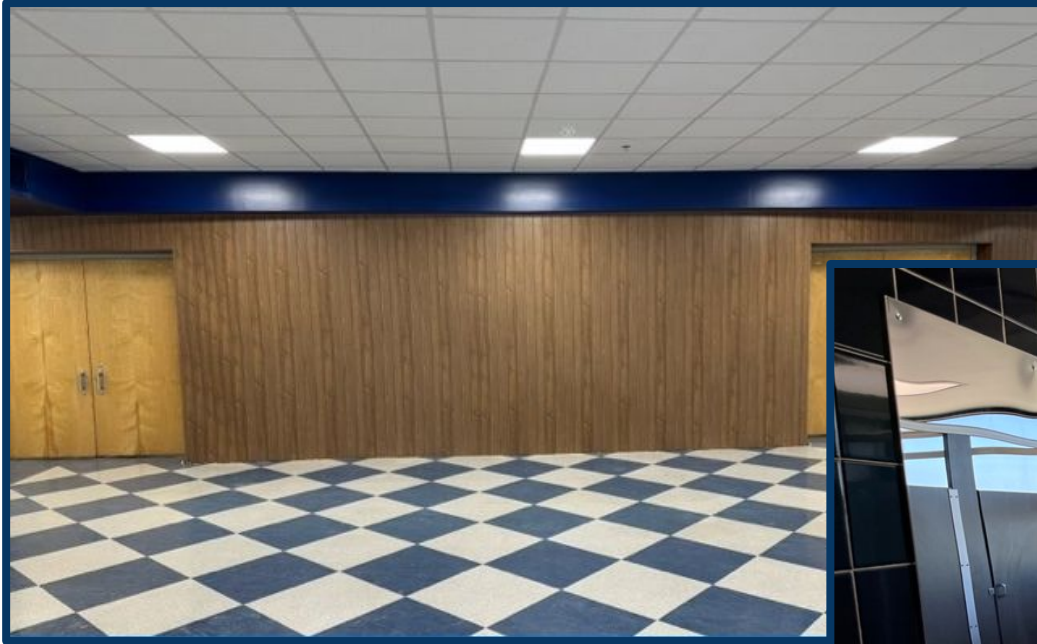
School	Sound System	Stage Lights	Electrical	Curtains
Carver	RFP	P.O. issued	Awaiting quote	In contract
E. Central Middle	RFP	P.O. issued	Awaiting quote	In contract
Hale Middle	RFP	P.O. issued	Awaiting quote	In contract
Memorial Middle	RFP	P.O. issued	Awaiting quote	In contract
Monroe	✓	✓	✓	✓
Thoreau	2015 bond	P.O. issued	Awaiting quote	In contract
Bell	Under contract	90%	✓	✓
Lewis & Clark	✓	✓	✓	✓
Wayman Tisdale	RFP			
Skelly	✓			
Anderson				✓

Additional sites will be added to charts as work is scheduled.

East Central Middle School: Auditorium improvements included new seats, carpet and paint. Curtains, sound and stage lighting are in progress. In addition, East Central received new lockers and a cafeteria expansion



Hale Senior High HVAC *Plus!*
ESSER \$14MM Bond \$1.4MM
Leveraged funds for maximum impact!



- Science rooms renovation
- Enhanced Secure Entry
- Lobby refresh
- Restroom renovations to meet ADA



Webster Middle Senior High Construction On Schedule to complete for 2024



Hydro and Aquaponics Labs



Band Room Addition

Fence Replacements: Improve safety and school image



<i>Phase 1</i>	<i>Phase 2</i>	<i>Phase 3 Summer '23</i>
Rogers	Springdale	● Bell
Hawthorne	Salk	● Carnegie
Burroughs	Hoover	● Cooper
Disney	Celia Clinton	● Eliot
Clinton West	Kerr	● Grissom
Marshall	Lewis & Clark	● Mitchell
	Tulsa MET	● Peary
	Lindbergh	● Sequoyah
	McKinley	● Unity
	Robertson	● Whitman
		● Patrick Henry

Transportation Bond...Progress Finally!



Received:

- 8 CNG SPED Buses with air conditioning!
- 10 half- ton pickup service vehicles
- 9 Police vehicles.

Awaiting:

- 5 months away from receipt of 15 nine-passenger vans
- 4 months away from delivery on 10 Type A buses for senior highs and programs!



Please don't hesitate to contact Chris or Ellen if you have any questions or concerns before then.

Chris Hudgins
hudgich@tulsaschools.org

Ellen Duecker
dueckel@tulsaschools.org
918-746-6520



Next Committee Meeting: November 14th @ Hale Sr. High