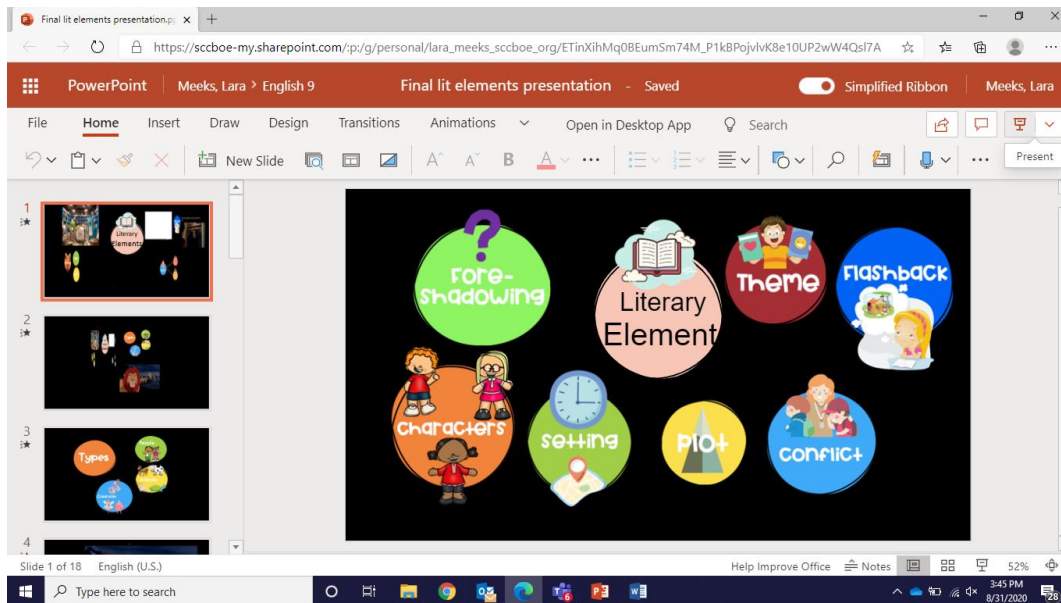


PowerPoint in Teams:

Because I tried to attach the PowerPoint as a file and it was too big, I had to get a sharable link and post it on a Word document and/or post it as a direct link. For some reason, it worked correctly on some computers but not on most. One of mine worked correctly, and the other one didn't so it was just as messed up for me.

Luckily, Mr. Scott came in and did some looking. He tried it using the present button (see photo below), and that seemed to work for 95% of the kids. When you click it, the presentation immediately starts in expanded mode.



Once you have clicked it, you should see a screen like the one below. Ignore the tool bar that pops up when you start it and just click in the dead space (black with not words or pics) to work it properly. There is usually more than one thing on a screen so if you hit the →, then you skip important info and go to the next screen.



A couple of students had an issue when it came to the video example portions. For some it would play automatically, and others had to actually hit the play button at the bottom of the video. It worked for everyone, but differently so you'll have to play a bit with that part.

Once the video plays, you should only have to click the same dead space; however, if that doesn't work, hit the tool bar arrow I said to avoid at the beginning. Remember, it changes to the next entire slide. Then proceed as before.

I hope this corrects the issue for everyone. Most of you know how to work technology better than me because you've grown up with it. Think things through and be problem solvers. You can probably figure most things out. If you see an issue and learn how to correct it, then share it with me. It may be something I need to pass on to others. We are in this together! 😊