



Dr. René Gutiérrez  
Superintendent of Schools

AN EARLY COLLEGE DISTRICT

# BROWNSVILLE

INDEPENDENT SCHOOL DISTRICT

Department of Curriculum, Instruction & Accountability  
1900 Price Road • Brownsville, Texas 78521 • (956) 548-8121



Dr. Norma Ibarra-Cantú  
Executive Director  
Secondary Education

## ***ECHS/P-TECH Directors and Counselors Meeting***

September 14, 2023

3:00 p.m. – 4:30 p.m.

CAB220

- I. Texas College & Career Readiness School Models (CCRSM)**
  - a. Overview
  - b. Revised blueprints
  - c. Designation Applications
    - i. Application deadline: TBD
    - ii. C&I will obtain signatures for assurance letters from BISD and IHEs
    - iii. P-TECH campuses are responsible for signatures from their industry partner(s)
  - d. Regional Convening- October 3, 2023
  - e. CCRSM resources
- II. Texas Southmost College (TSC)**
  - a. Fall 2023 Enrollment
  - b. Fall 2023 Sections and Faculty
  - c. Spring 2024 Spring Sections
  - d. Fall 2023 Faculty Rosters Verification
  - e. TSC Calendar/Deadlines
  - f. College Transition Coaches Update
  - g. Dual Programs Symposium
- III. University of Texas Rio Grande Valley (UTRGV)**
  - a. Year in Review 22-23
  - b. Timeline- Summer 2024
  - c. Admissions Criteria
  - d. Application Process
  - e. Secondary Educational Partnerships Staff

*BISD does not discriminate on the basis of race, color, national origin, gender, religion, age, disability or genetic information in employment or provision of services, programs or activities.*

*BISD no discrimina de acuerdo a raza, color, origen nacional, género, religión, edad, información genética, o incapacidad en el empleo o la disposición de servicios, programas o actividades.*

#### **IV. Early College High School (ECHS)/Dual Enrollment**

- a. Spring 2023 Associate Graduates
- b. Dual Enrollment program data
- c. Recruitment
  - i. Ensure students have correct coding on PEIMS
  - ii. Middle school recruitment
- d. TSIA2
  - i. 2022-2023 Cumulative Reports
  - ii. District Resources
  - iii. TSIA2- Middle School
    - 1. All 8<sup>th</sup> graders take PAA- September 25- November 3, 2023
    - 2. All 8<sup>th</sup> graders take TSIA2 ELAR- November 6- December 21, 2023
    - 3. 8<sup>th</sup> graders in Algebra I take TSIA2 Math May 1-30, 2024
  - iv. 8 hours of tutorial required before retesting/ 10 hours for middle schools
  - v. Yearlong courses
- e. Cohort scheduling
  - i. All cohort students must be enrolled in the AVID elective (9<sup>th</sup>-12<sup>th</sup> grades)
  - ii. Academic core classes should be Honors
  - iii. Cohort should not be double coded with regular students. May double code with STAMP/STEM/SPACE
- f. Adjuncts
  - i. Must be assigned a BISD teacher of record
  - ii. Check TSC Early Alerts
- g. AVID
  - i. CCI
  - ii. Visitations for Hanna, Porter, Pace and Vets from AVID Leadership
  - iii. AVID Elective Teachers PLCs and on-going Professional Development
  - iv. Initiatives-- G-Force and TSIA2

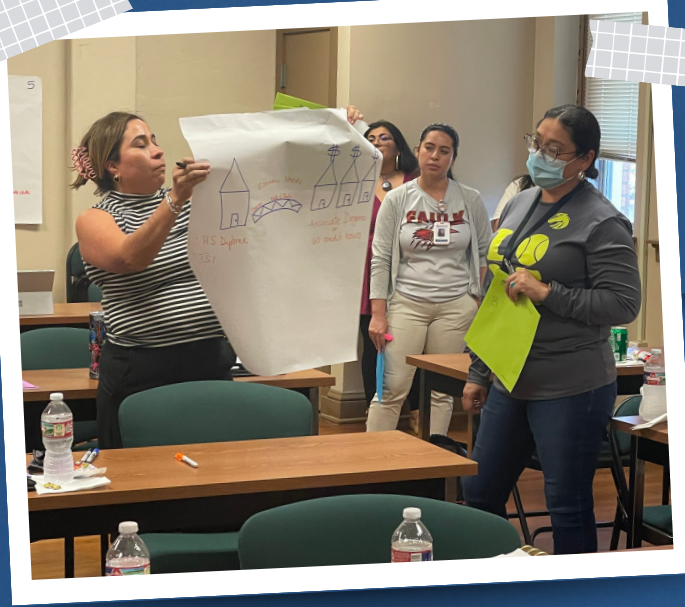
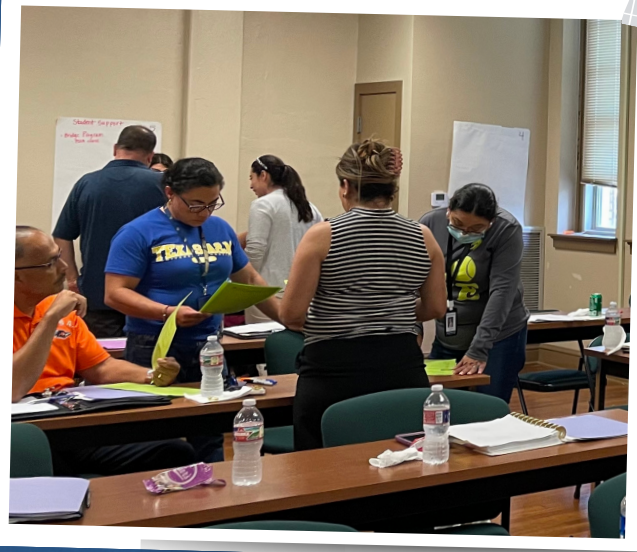
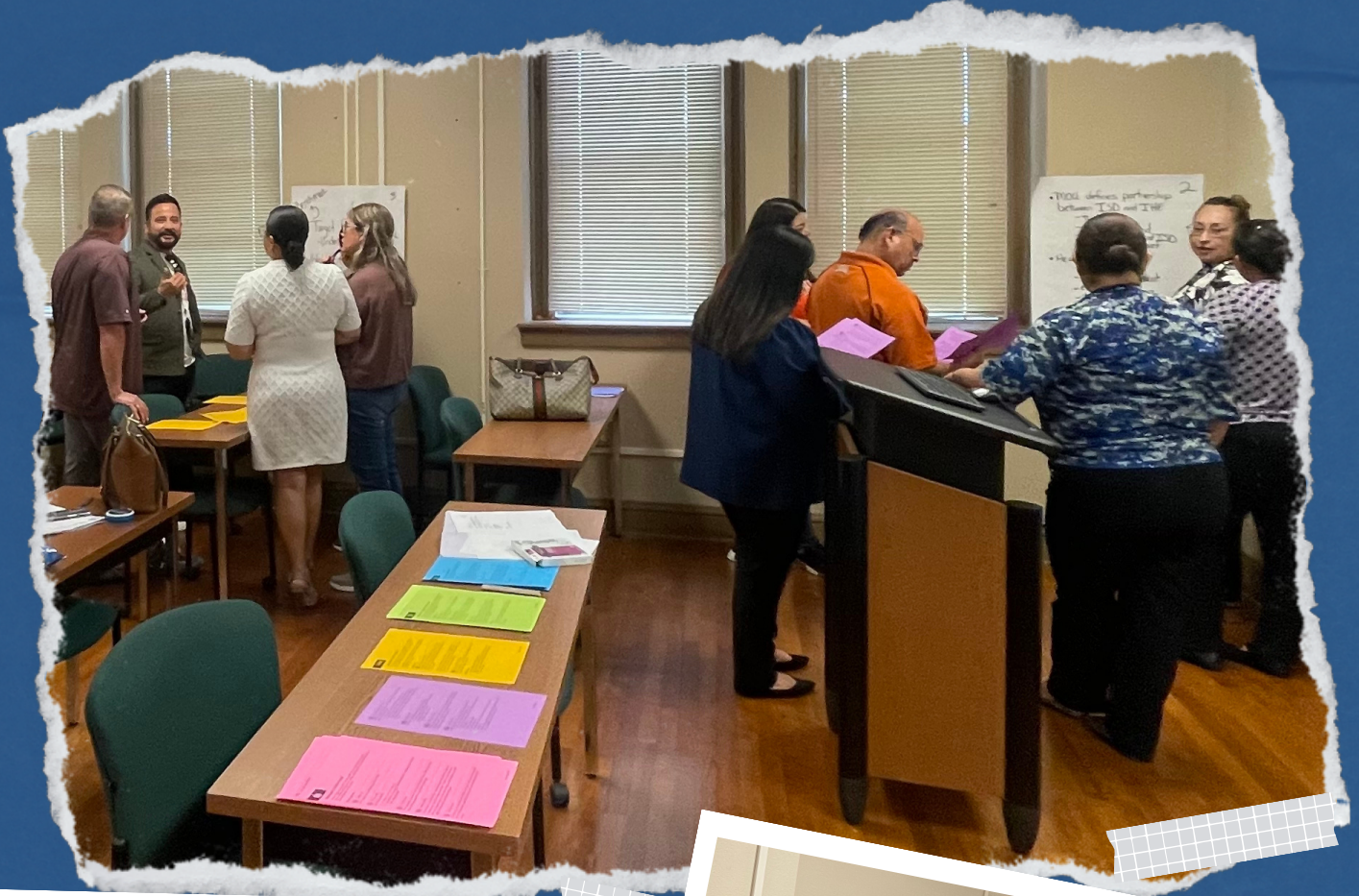
#### **V. Pathways in Technology Early College High School (P-TECH)**

- a. Review of P-TECH websites for continuous improvement efforts
- b. Overview of pathways offered at each campus
- c. Planning process to launch a new P-TECH program

*BISD does not discriminate on the basis of race, color, national origin, gender, religion, age, disability or genetic information in employment or provision of services, programs or activities.*

*BISD no discrimina de acuerdo a raza, color, origen nacional, género, religión, edad, información genética, o incapacidad en el empleo o la disposición de servicios, programas o actividades.*









AN EARLY COLLEGE DISTRICT

# BROWNSVILLE

INDEPENDENT SCHOOL DISTRICT

## **ECHS/P-TECH Directors & Counselors Meeting**

September 14, 2023







AN EARLY COLLEGE DISTRICT

# BROWNSVILLE

INDEPENDENT SCHOOL DISTRICT



**Dr. Norma Ibarra-Cantu**  
**Executive Director, Secondary Education**

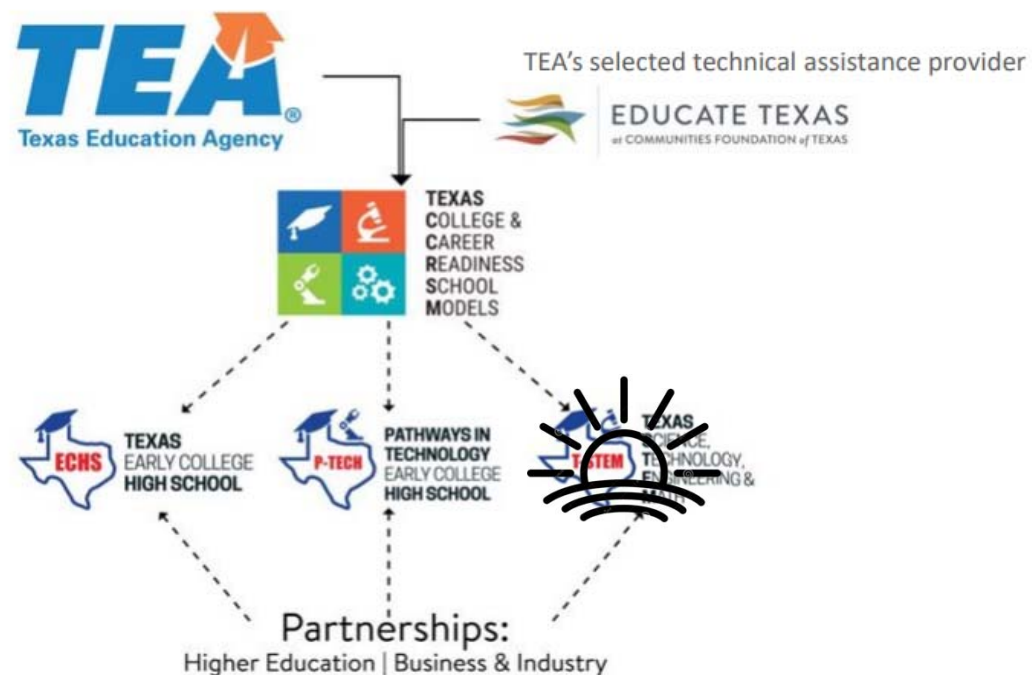


**Melissa De La Torre**  
**ECHS/ Dual Enrollment Lead Teacher**



# Texas College & Career Readiness School Models

## Overview





# Texas College & Career Readiness School Models

## College and Career Readiness

### College and Career Readiness Models (CCRSM)

- Early College High School (ECHS)
- Pathways in Technology Education Early High School (P-TECH)

### CCRSM Strategic Mission

“Build and support innovative high schools that provide a structured program, which leads students to graduate with postsecondary outcomes”

### - Mission Statement



The Brownsville Independent School District will graduate students who are prepared to excel in higher education and successfully pursue career opportunities in a changing global society by maximizing resources to ensure equitable opportunities for all students.



**READINESS  
SCHOOL  
MODELS**

# Texas College & Career Readiness School Models



## Overview



**TEXAS  
EARLY COLLEGE  
HIGH SCHOOL**



Provides 60 hours, tuition free college courses



Increases college readiness and reduces barriers to college access



Offer rigorous coursework with academic and social supports



**PATHWAYS IN  
TECHNOLOGY  
EARLY COLLEGE  
HIGH SCHOOL**



Partners with regional Institutions of Higher Education and businesses



Includes work-based learning experiences



Provides a post-secondary certificate or industry certification



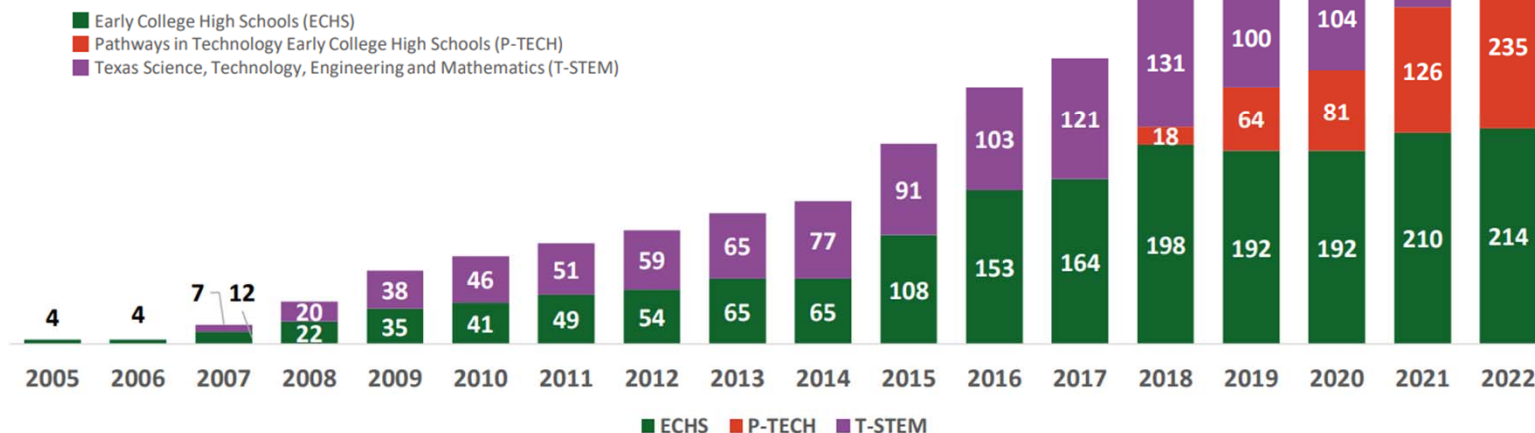


# Texas College & Career Readiness School Models

## Overview

### Growth of the CCRSM Network

Designated and Planning CCRSM Campuses, 2004-2005 through 2021-2022



**Notes and Sources:** Annual portfolio size data from TEA. Beginning in 2019, campuses in their planning year are included in the portfolio, as they receive technical assistance during that year despite not serving students. Planning Campuses who have chosen not to pursue designation at some point during the year are excluded from counts. Campuses designated or planning for more than one model type are counted in each model group (i.e. a campus with cohorts of students in both T-STEM and ECHS appears in both the T-STEM count and the ECHS count).



AN EARLY COLLEGE DISTRICT

# BROWNSVILLE

INDEPENDENT SCHOOL DISTRICT

## Standalone ECHS



**Principal:**  
Dr. Rachel  
Ayala



**Principal:**  
Blanca Lambarri

**ECHS Director:**  
Juan Chavez



**P-TECH Director:**  
Juan Chavez



**Principal:**  
Aimee Garza-Limon

**ECHS Director:**  
Melissa Garza



**Principal:**  
Marisol Trevino-Ayala

**ECHS Director:**  
Sonia Villalon



**P-TECH Director:**  
Erica Ureste



**Principal:**  
Mary Solis

**ECHS Director:**  
Erika Medina



**P-TECH Director:**  
Dr. Orfa Blanco



**Principal:**  
Obed Leal

**ECHS Director:**  
Rodrigo Lopez



**Principal:**  
Norma Canales

**ECHS Director:**  
Rebecca Castillo- Trejo



**P-TECH Director:**  
Freddy Martinez





# Texas College & Career Readiness School Models

## Revised Blueprints

### CCRSM Blueprints – ECHS and P-TECH

Re-Aligned CCRSM Benchmarks		
<b>Benchmark 1</b>	School Design	<ul style="list-style-type: none"><li>• School Structure</li><li>• Leadership Teams and Advisory Councils</li><li>• Staff Capacity</li></ul>
<b>Benchmark 2</b>	Partnerships	<ul style="list-style-type: none"><li>• Institutions of Higher Education</li><li>• Business/Industry (P-TECH)</li></ul>
<b>Benchmark 3</b>	Target Population	<ul style="list-style-type: none"><li>• Recruitment</li><li>• Enrollment</li></ul>
<b>Benchmark 4</b>	Academic Infrastructure	<ul style="list-style-type: none"><li>• Courses</li><li>• Assessments</li></ul>
<b>Benchmark 5</b>	Student Supports	<ul style="list-style-type: none"><li>• Academic Support</li><li>• Multi-Tiered System of Support</li></ul>
<b>Benchmark 6</b>	Work-Based Learning	<ul style="list-style-type: none"><li>• Work-Based Learning at every grade level</li></ul>

# Texas College & Career Readiness School Models

## Revised Blueprints



### CCRSM Outcomes-Based Measures (OBM)

- Outcomes-Based Measures (OBMs)
  - **Access:** Student representation within the CCRSM program
    - Must meet both At-Risk and Economically Disadvantaged (2)
  - **Achievement:** Student achievement through high school-based opportunities
    - Must meet three Achievement data indicators (3)
  - **Attainment:** Student attainment of postsecondary opportunities such as College Credit, Level I or II Certificates, Core Completion, Associate Degree or Industry-Based Certifications
    - Must meet three Attainment data indicators (3)



# Texas College & Career Readiness School Models

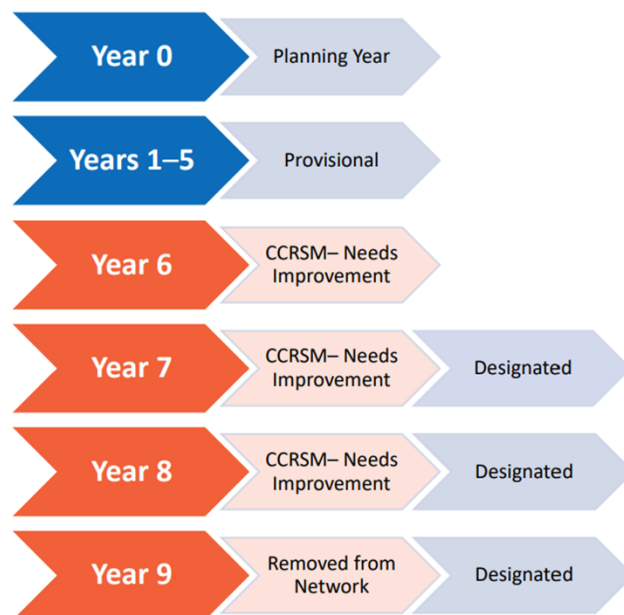


## Revised Blueprints



### Revised CCRSM Designation Status Pathways

#### CCRSM Designation Status with TEA Remediation



#### Needs Improvement:

- In year 6, work with TEA in addition to Technical Assistance from vendor to improve data indicators
- In year 7, use year 6 data to determine if campus met Designation standards
- In year 8, use year 7 data to determine if campus met Designation standards
- In year 9, campus will be removed from CCRSM network if Designation Standards are not met or will be “Designated” if data indicators are met that meet the standards for Designation

# Texas College & Career Readiness School Models



## Revised Blueprints



**TEXAS**  
EARLY COLLEGE  
HIGH SCHOOL



SCAN FOR  
ECHS  
BLUEPRINT



**PATHWAYS IN  
TECHNOLOGY**  
EARLY COLLEGE  
HIGH SCHOOL



SCAN FOR  
P-TECH  
BLUEPRINT

# Texas College & Career Readiness School Models



## Jigsaw Activity



# Texas College & Career Readiness School Models

## Designation Applications

- **Deadline TBD. Online portal is having technical issues.**
- **Dept. of CI&A will obtain signatures for assurance letters from BISD and IHEs**
- **P-TECH campuses are responsible for signatures from their industry partner(s)**



# Texas College & Career Readiness School Models



## Regional Convening

### Registration for CCRSM Fall Regionals Now Open

Please join the TEA and Educate Texas for the 2023 Fall Regional Convenings. These convenings will feature professional development sessions and networking opportunities.

#### South Texas Regional Convening

ESC 1

1900 W Schunior St, Edinburg, TX 78541

October 3rd, 2023

#### North Texas Regional Convening

Dallas College - Bill J Priest Center

1402 Corinth St, Dallas, TX 75215

October 17th, 2023

[REGISTER HERE](#)



**Andres Chavez**

Associate, Programs  
Educate Texas

\*Agenda Pending

Approximate Time:

Registration Begins at 8 am

Last Session Starts at 2 pm

Register at:

<https://www.tfaforms.com/5083418>

Benchmark 1: School Design

OBM: Access, Achievement, Attainment



# Texas College & Career Readiness School Models



## CCRSM Resources



**2023 New Leader Convening  
Slide Deck**



**Sign up for the CCRSM  
Listserve**



**Join CCRSM  
Community of Practice**

Benchmark 1: School Design  
OBM: Access, Achievement, Attainment





# Texas College & Career Readiness School Models



**Quiz Time!**

# **ECHS/P-TECH Leadership Cabinet**

**Presented By:  
Texas Southmost  
College  
September 14, 2023**



# TSC Agenda Items

- **Fall 2023 Enrollment**
- **Fall 2023 Sections and Faculty**
- **Spring 2024 Spring Sections**
- **Faculty Rosters Verification**
- **Calendar Deadline**
- **College Transition Coach Update**
- **Dual Credit Symposium**



# Fall 2023 Enrollment

BISD High School	Fall 2023 Enrolled Students	Fall 2022 Enrolled Students
BROWNSVILLE ECHS	94	84
HANNA ECHS	439	334
LOPEZ ECHS	341	350
PACE ECHS	398	349
PORTER ECHS	294	326
RIVERA ECHS	491	488
VETERANS ECHS	582	576
Total:	2,639	2,507





# Fall 2023 Sections and Faculty

## Sections

- 356 Total Sections
- 178 Dual Sections
- 178 ECHS Sections

## Faculty

- 56 High School and TSC Adjuncts



## Spring 2024 Spring Sections

- Records will be sending ISD's the Spring 2023 Copy of Course Sections on September 18, 2023.
- The ISD's will be receiving these course sections from [dualcredit@tsc.edu](mailto:dualcredit@tsc.edu).
- Instructions will be provided in email and training will be available upon request.



# Faculty Rosters Verification

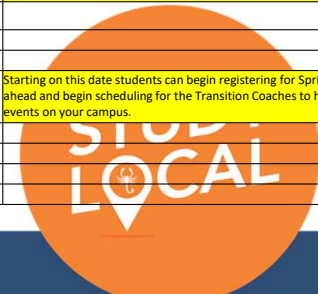
- **Faculty Roster Verifications are due September 8, 2023**
- HS Instructors/TSC Adjuncts need to compare Self-Service and Canvas rosters.
- Instructors will submit Roster Verification to High School Liaison for review.
- High School Liaison will need to compare High School rosters with the Instructor roster submissions.
- High School Liaison will submit rosters to [dualcredit@tsc.edu](mailto:dualcredit@tsc.edu).



## TSC Calendar/Deadlines (Tentative Spring 2024)

Fall 2023 Academic Calendar	Process
March 1, 2023 - Deadline to submit Course Request	
April 3, 2023 - (Monday) Student registration opens for summer and fall 2023	
April 28, 2023 - (Friday) Master List and all Documents due	
August 25, 2023 - (Friday) <b>Registration Ends</b>	
August 28, 2023 - (Monday) <b>Classes begin</b>	All Dual Instructors are required to submit Early Alerts through STARFISH from 1st class day till last day to withdraw. Transition Coach will immediately email student and counselor for follow-up. Instructors will be required to submit at least the progress survey by deadline of October 13, 2023 if no other flags need to be raised. Instructors will be trained on August 26, 2023 during Convocation, they will be provided all of the resources needed to raise flags.
August 28 - September 1, 2023 (Monday-Friday) <b>Add/Drop Period</b>	During this time, there will be no Add/Drop form required for Dual Credit Students because the student will need to make the appropriate changes through TSC Self Service. Contact your College Transition Coach at your high school if issues occur. Only a Withdraw form is required for documentation if the student is completely withdrawing. If a withdraw form is submitted before Census Day, no attempt (W) will be transcribed. <b>Note that attempts after 1st day of class may cause financial implications.</b>
September 5-8, 2023 - (Monday-Friday) <b>Roster Verification Due Friday by 3pm</b>	Instructors need to verify Canvas Roster by exporting the gradebook against TSC Self-Service and exporting their roster. Both rosters will be submitted to dualcredit@tsc.edu. If any changes need to be made they can be done directly on the roster. The ISD rosters must be verified before they verify TSC rosters.
September 13, 2023 - (Wednesday) <b>Census day</b> (4th class day) - Last day to withdraw without a recorded grade	Any changes made to a students schedule after Census Day will be transcribed.
September 15, 2023 (Friday) - ISD's to receive updated Cleared Dual Report After Withdraws Processed	Counselors can begin using this updated report to identify who will be cleared for Spring 2024, New students can also begin to be identified
September 18, 2023 - (Monday) Records will send ISD's Spring 2023 Copy of Course Sections	The ISD's will be receiving these course sections from dualcredit@tsc.edu
September 22, 2023- (Friday) By <b>3 PM</b> ISD's to Return Course Section Request Form	Deadline Date to submit your course section request to dualcredit@tsc.edu
September 25-29, 2023- Initial Review of potential Spring 2024 Graduates	The Transition Coaches should submit to ISD Counselors a report with potential Spring 2024 graduates for review by <b>Monday 3pm</b> ; Counselors will work with Coaches so students can be properly planned for Spring 2024
October 2, 2023- By <b>3 PM</b> Records will send ISD Spring 2024 Created Sections	From this date forward contact dualcredit@tsc.edu to schedule a meeting and discuss changes.
October 16, 2023- Spring 2024 Registration will open	Starting on this date students can begin registering for Spring 2024. Plan ahead and begin scheduling for the Transition Coaches to host registration events on your campus.
November 17, 2023 - (Friday) <b>Last day to Withdraw</b>	No withdraws will be accepted after this day.
November 22- 24, 2023 - (Wednesday-Friday) Thanksgiving Holiday (College Closed)	
December 8, 2023 - (Friday) Last day of Class	
December 9-15, 2023 - (Saturday-Friday) Final Exams (Contingent on Course Section)	
December 16, 2023 - (Saturday) Fall 2023 Commencement	
December 20, 2023-January 2, 2024 - (WednesdayTuesday) Winter Break (College Closed)	

Spring 2024 Academic Calendar	Process
October 16, 2023 (Monday) Student registration opens for Spring 2024	
December 20, 2023-January 2, 2024 (Wednesday-Tuesday)	Winter Break (College Closed)
January 3, 2024 (Wednesday)	College Opens
January 9, 2023 (Tuesday) Last day to submit Apply Texas Application for spring 2024	
January 15, 2023 (Monday) Classes begin – Martin Luther King, Jr. Day	College will be open. All Dual Instructors are required to submit Early Alerts through STARFISH from 1st class day till last day to withdraw. Transition Coach will immediately email student and counselor for follow-up. Instructors will be required to submit at least the progress survey by deadline if no other flags need to be raised. New instructors will be trained during Convocation, they will be provided all of the resources needed to raise flags.
January 15-19, 2023 (Monday-Friday) Add/Drop period	During this time, there will be no Add/Drop form required for Dual Credit Students because the student will need to make the appropriate changes through TSC Self Service. Contact your College Transition Coach at your high school if issues occur. Only a Withdraw form is required for documentation if the student is completely withdrawing. If a withdraw form is submitted before Census Day, no attempt (W) will be transcribed. <b>Note that attempts after 1st day of class may cause financial implications.</b>
January 22-26, 2024 (Monday-Friday) Roster Verification	ISD and Faculty must verify ISD rosters first. Then instructors need to verify Canvas Roster by exporting the gradebook against TSC Self-Service and exporting their roster. Both rosters will be submitted to dualcredit@tsc.edu. If any changes need to be made they can be done directly on the roster.
January 30, 2023 (Tuesday) Census Day (12th Class Day) - Last day to withdraw without a recorded grade	Any changes made to a students schedule after Census Day will be transcribed.
February 2, 2024 (Friday) - ISD's to receive updated Cleared Dual Report with withdrawals processed	Counselors can begin using this updated report to identify who will be cleared for Summer and Fall 2024, New students can also begin to be identified and shared with Transition Coach.
February 5, 2024 (Monday) - Records will send ISD's Summer and Fall 2024 copy of course sections	The ISD's will be receiving these course sections from dualcredit@tsc.edu
February 9, 2024 (Friday)- By <b>3 PM</b> , ISD will return Course Section Request Form	Deadline Date to submit your course section request to dualcredit@tsc.edu
February 19, 2024 (Monday) By <b>3 PM</b> , Records will send ISD Summer and Fall 2024 created sections	From this date forward contact dualcredit@tsc.edu to schedule a meeting and discuss changes.
February 23, 2024 (Friday) Brownsville Charro Days (College Closed)	
March 11-17, 2024 (MondaySunday) Spring Break (College closed)	
March 29, 2024 (Friday) Semester break (College Closed)	
April 1, 2024 (Monday) Student registration opens for Summer and Fall 2024	Starting on this date students can begin registering for Spring 2024. Plan ahead and begin scheduling for the Transition Coaches to host registration events on your campus.
April 16, 2024 (Tuesday) Last Day to withdraw	
May 3, 2023 (Friday) Last day of class	
May 4-10, 2023 (SaturdayFriday) Final Exams (Contingent on Course Section)	
May 11, 2024 (Saturday) Spring 2024 Commencement	





# College Transition Coaches

High School	College Transition Coach
BECHS and Lopez ECHS	Ms. Valeria Ortiz
Hanna ECHS	Ms. Ariel Hernandez
Pace ECHS	Ms. Prisma Gonzalez
Porter ECHS	Ms. Erica Garcia
Rivera ECHS	Ms. Ruth Torres, Coordinator of High School Relations
Veterans ECHS	Ms. Ingrid De La Torre



PLEASE JOIN US

OFFICE *of* TRANSITION SERVICES  
**DUAL CREDIT SYMPOSIUM**

DATE & TIME

TUESDAY  
**SEPTEMBER 19**  
8:00 A.M. - 1:00 P.M.

SEP  
19

LOCATION

OLIVEIRA STUDENT  
SERVICES CTR. *(2nd floor)*  
1701 MAY ST.  
BROWNSVILLE, TX

STUDY  
LOCAL



# ***Secondary Educational Partnerships***

**Dr. Michael E. Aldape- Assistant Provost for  
Secondary Educational Partnerships**

**Rose M. Pulido, M. Ed. – Program Manager  
for Secondary Educational Partnerships**

**UTRGV**™ | Secondary Educational  
Partnerships

# Fall 2022

## Campuses Represented:

- BECHS

Description	Count
Number of Students Enrolled	167
Number of Course Sections Offered	27
Number of Credits Earned	1,979
Overall Success Rate (Grade of A-D)	94%



### Spring 2023

### Campuses Represented:

- **BECHS (161)**
- **Pace (1)**

Description	Count
Number of Students Enrolled	162
Number of Course Sections Offered	15
Number of Credits Earned	1,518
Overall Success Rate (Grade of A-D)	89%

### Summer 1 2023

#### Campuses Represented:

- **BECHS (28)**
- **Hanna (1)**
- **Lopez (7)**
- **Pace (1)**
- **Veterans (13)**

Description	Count
Number of Students Enrolled	50
Number of Course Sections Offered	28
Number of Credits Earned	188
Overall Success Rate (Grade of A-D)	89%

### Summer 2 2023

#### Campuses Represented:

- **BECHS (23)**
- **Hanna (1)**
- **Lopez (4)**
- **Pace (1)**
- **Veterans (8)**

Description	Count
Number of Students Enrolled	37
Number of Course Sections Offered	12
Number of Credits Earned	109
Overall Success Rate (Grade of A-D)	76%

## Year in Review 22-23

UTRGV™ Secondary Educational  
Partnerships

Fall 2023 Number of Students Enrolled

BECHS-  
160

Hanna - 1

Lopez- 1

Pace- 1

Veteran's-  
1

## Timeline - Summer 2024

Parent  
Informational  
Meetings @  
campuses

October 2023

Students  
submit Apply  
Texas  
Application

November 2023

Counselors  
submit  
student  
documents

January 2024

Applicant  
reports sent to  
counselors

February 2024

Admitted and  
cleared students  
attend Summer I  
and II Orientation

Mar-Apr 2024

Enrollment Reports  
sent to counselors

Mar-Apr 2024

Summer I 2024  
begins

June 3, 2024





# Admissions Criteria

**Students seeking Dual Credit opportunities with UTRGV will have an individual academic profile created based on a variety of factors, including but not limited to:**

- **High School Class Rank;**
  - **GPA;**
  - **College Entrance Exams (SAT/ACT) (PSAT/ACT-PLAN);**
  - **Extracurricular Activities;**
  - **Community Involvement;**
- 
- **Academic profiles are created with submitted documentation and admission decisions are made based on that profile and accomplishments to date.**

# Application Process

**UTRGV**™ Secondary Educational Partnerships

1

**Apply**  
at [goapplytexas.org](http://goapplytexas.org)

2

**Submit DC Authorization**  
Form signed by the  
Parent/Guardian,  
Principal, and Counselor.

3

**Submit official HS**  
**Transcript**

- Must include GPA, ranking, and graduation type

4

**Submit Placement**  
**Scores**

- Must submit all TSI scores

5

**Submit proof of**  
**Meningitis Vaccine**

- Must be current 10 days prior to the 1st day of class.

## Secondary Educational Partnerships Staff



Dr. Michael E. Aldape  
Assistant Provost, Secondary  
Educational Partnerships  
[Michael.Aldape@utrgv.edu](mailto:Michael.Aldape@utrgv.edu)



Rose M. Pulido, M. Ed.  
Program Coordinator – Secondary  
Educational Partnerships (Brownsville)  
[rose.pulido01@utrgv.edu](mailto:rose.pulido01@utrgv.edu)

# ECHS/ Dual Enrollment

Spring 2023 Graduates





# ECHS/ Dual Enrollment

## Spring 2023 Graduates

### 2022-2023

	Projected at Beginning of 2022-2023	Final Degrees Conferred 2022-2023	Difference from BEG of Year
BECHS	72	63	-12.50%
Hanna ECHS	36	26	-27.70%
Lopez ECHS	19	27	42.10%
Pace ECHS	66	60	-9.09%
Porter ECHS	35	14	-60.00%
Rivera ECHS	72	66	-8.30%
Veterans ECHS	50	49	-2.00%
<b>District Total:</b>	<b>350</b>	<b>305</b>	<b>-12.80%</b>

	Projected at Beginning of 2023-2024
BECHS	79
Hanna ECHS	51
Lopez ECHS	44
Pace ECHS	84
Porter ECHS	28
Rivera ECHS	71
Veterans ECHS	49
<b>District Total:</b>	<b>406</b>



# ECHS/ Dual Enrollment

## Program Data

### Enrollment by Semester

2022-2023								
	Fall		Spring		Summer I		Summer II	
	TSC	UTRGV	TSC	UTRGV	TSC	UTRGV	TSC	UTRGV
BECHS	82	167	202	161	82	28	21	23
Hanna ECHS	321		385		221	1	112	1
Lopez ECHS	337		320		80	7	42	4
Pace ECHS	339		465	1	153	1	91	1
Porter ECHS	297		314		100	0	57	0
Rivera ECHS	467		581		198	0	129	0
Veterans ECHS	567		671		293	13	167	8
<b>District:</b>	<b>2410</b>	<b>167</b>	<b>2938</b>	<b>162</b>	<b>1127</b>	<b>50</b>	<b>619</b>	<b>37</b>
<b>District Annual Total: 7,510</b>								

### Credits Earned per Semester

2022-2023								
	Fall		Spring		Summer I		Summer II	
	TSC	UTRGV	TSC	UTRGV	TSC	UTRGV	TSC	UTRGV
BECHS	246	1979	1065	1515	291	88	63	59
Hanna ECHS	1368		2055		1032	3	471	3
Lopez ECHS	1239		1823		363	28	165	4
Pace ECHS	1453		2626	3	727	6	374	6
Porter ECHS	1244		1619		503		256	
Rivera ECHS	2007		3111		910		495	
Veterans ECHS	2068		3513		1444	63	750	37
<b>District:</b>	<b>9625</b>	<b>1979</b>	<b>15812</b>	<b>1518</b>	<b>5270</b>	<b>188</b>	<b>2574</b>	<b>109</b>
<b>District Total: 37,075</b>								





# ECHS/ Dual Enrollment

Benchmark 3: Target Population  
OBM: Access

## Recruitment

### Coding for ECHS PEIMS Snapshot

#### Definition:

**ECHS-INDICATOR-CODE (E1560)** indicates whether a student is enrolled in an Early College High School (ECHS) as defined in TAC 102.1091.

ECHS-INDICATOR-CODE is reported for students in grades 9-12.

ECHS-INDICATOR-CODE is reported in PEIMS Submissions 1, 3, and 4.

A list of approved Early College High Schools is available as a link with the latest release of the Texas Education Data Standards.

#### For PEIMS Fall Submission (1):

For Submission 1, the ECHS-INDICATOR-CODE reflects the student's enrollment in an Early College High School (ECHS) as of the PEIMS Fall snapshot date.

#### For PEIMS Summer Submission (3) and Extended Year Submission (4):

For Submission 3 and 4, the ECHS-INDICATOR-CODE reflects the student's enrollment in an Early College High School (ECHS) at any time during the school year.

#### Coding the students shown below:

Menu>Registration> PEIMS Enrollment Indicator > ECHS Indicator

1. Search Student on eSchoolPlus
2. Go to Registration > PEIMS Enrollment Indicator > ECHS Indicator  
Click on Not Assigned

PEIMS Enrollment Indicator Fields	
T-STEM Indicator	Not Assigned
ECHS Indicator	Not Assigned

3. Click Value and enter Start Date. Don't forget to SAVE.

Actions	Program	Value	Start Date	End Date
	ECHS Indicator	<input type="checkbox"/>		

Save Cancel

### Coding for P-TECH PEIMS Snapshot

#### Definition:

**P-TECH-INDICATOR-CODE (E1612)** indicates that a student in grades 9-12 is participating in the Pathways in Technology (P-TECH) Early College High School program.

The P-TECH Indicator Code is limited to approved LEA campuses by application to TEA. A list of approved P-TECH programs is available as a link with the latest release of the Texas Education Data Standards.

The P-TECH program is limited to students in grades 9-12. Students below grade 9 will not report the P-TECH Indicator Code.

The P-TECH Indicator Code is collected in PEIMS Submissions 1, 3 and 4.

#### For PEIMS Fall Submission (1):

For Submission 1, the P-TECH-INDICATOR-CODE reflects the student's participation in the Pathways in Technology (P-TECH) Early College High School program as of the PEIMS Fall snapshot date.

#### For PEIMS Summer Submission (3) and Extended Years Submission (4):

For Submission 3 and 4, the P-TECH-INDICATOR-CODE reflects the student's participation in the Pathways in Technology (P-TECH) Early College High School program at any time during the school year.

#### Coding the students shown below:

Menu>Registration> District-Defined PEIMS Career Tech > P-Tech Indicator

1. Search Student on eSchoolPlus
2. Go to Registration > District-Defined PEIMS Career Tech > P-Tech Indicator  
Click on Not Assigned

Service ID	Not Assigned
Contact Hours	3 - 3 Contact Hours
Displaced Homemaker Indicator	Not Assigned
Completed CTE Course	<input checked="" type="checkbox"/>
Override Completed CTE Course	<input type="checkbox"/>
P-TECH Indicator	Not Assigned

3. Click Value and enter Start Date. Don't forget to SAVE.

Actions	Program	Value	Start Date	End Date
	P-TECH Indicator	<input type="checkbox"/>		

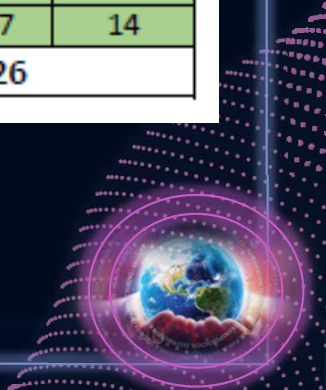
Save Cancel

# ECHS/ Dual Enrollment

## Recruitment

8th Grade Recruitment

	2019-2020			2020-2021			2021-2022			2022-2023		
	ECHS	DE	PTECH	ECHS	DE	PTECH	ECHS	DE	PTECH	ECHS	DE	PTECH
Besteiro	44	12		40	10		65	3		45	0	
Faulk	51	52		21	18	7	21	91	17	16	52	8
Garcia	148	42		60	42		49	39		30	53	
Lucio	86	29		72	25			59		68	44	
Manzano	44	88		15	52		37	36	26	76	51	4
Oliveira	51	83	7	28	25	9	30	52	8	25	83	
Perkins	27	43		45	7		87	6		60	19	
Stell	124	12	7	63	11		83	12		120	2	2
Stillman	36	121		29	90		34	181		24	119	
Vela	5	80	4	22	40	8	17	69	1	1	124	
District:	616	562	18	395	320	24	423	548	52	465	547	14
<b>District Total:</b>	<b>1,196</b>			<b>739</b>			<b>1023</b>			<b>1026</b>		

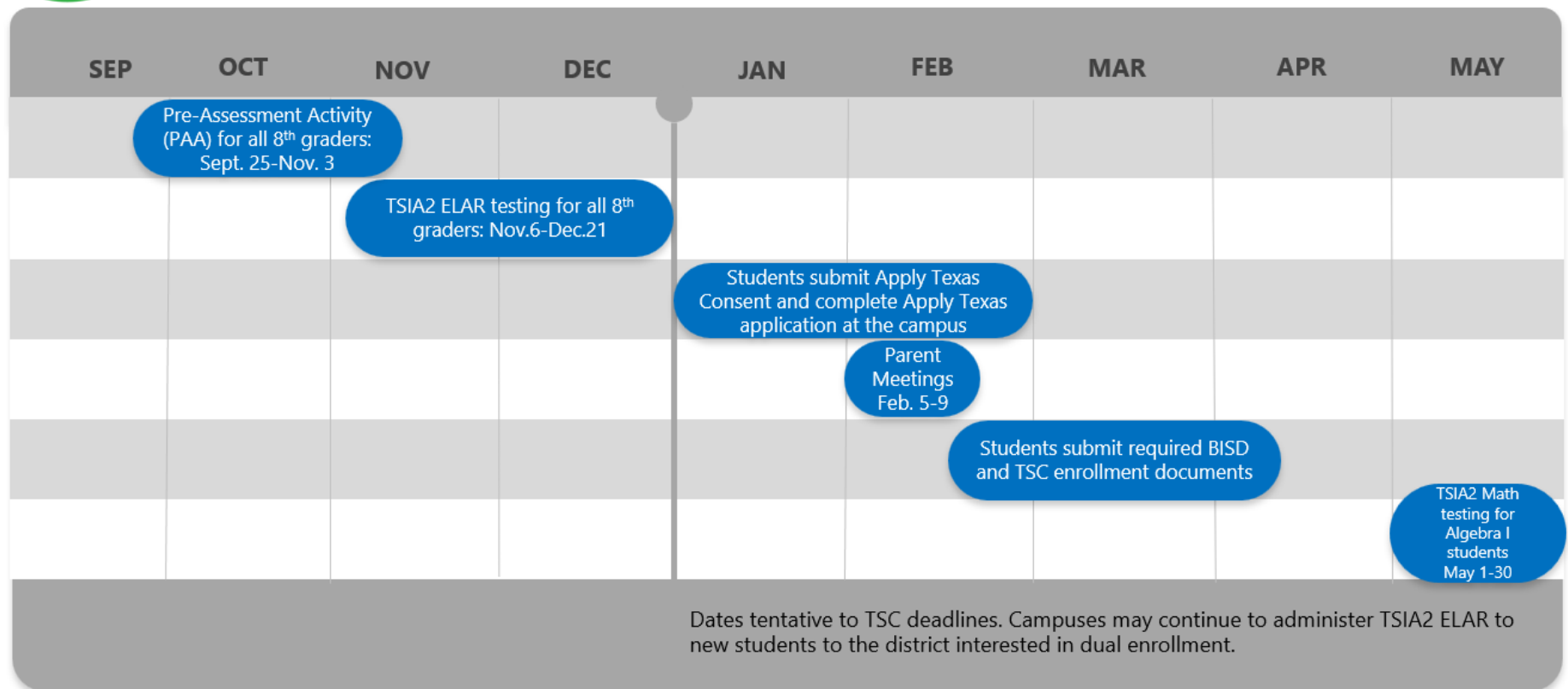


# ECHS/ Dual Enrollment

Benchmark 3: Target Population  
OBM: Access



## ECHS/ P-TECH/ Dual Enrollment 8<sup>th</sup> Grade Recruitment



# ECHS/ Dual Enrollment

Benchmark 4: Academic Infrastructure  
OBM: Achievement

## TSIA2

### TSI ECHS Report

ECHS 9th				ELAR			Math			All Subjects			
Building	Active 6/29/2023	# Tested	# Pass	% Pass	# Tested	# Pass	% Pass	# Tested	# Pass	% Pass	% Grade Pass		
B'ville Early College Hs	84	80	51	61%	79	40	48%	77	33	39%	39%		
Hanna High School	47	44	25	53%	30	17	36%	29	16	34%	34%		
Lopez High School	68	68	24	35%	50	8	12%	50	8	12%	12%		
Pace High School	66	66	22	33%	57	13	20%	57	11	17%	17%		
Porter High School	10	10	2	20%	10	3	30%	10	2	20%	20%		
Rivera High School	90	90	12	13%	57	12	13%	57	5	6%	6%		
Veterans Memorial H S	46	46	15	33%	34	14	30%	34	9	20%	20%		
<b>Total</b>	<b>411</b>	<b>404</b>	<b>151</b>	<b>37%</b>	<b>317</b>	<b>107</b>	<b>26%</b>	<b>314</b>	<b>84</b>	<b>20%</b>	<b>20%</b>		

ECHS 10th				ELAR			Math			All Subjects			
Building	Active 6/29/2023	# Tested	# Pass	% Pass	# Tested	# Pass	% Pass	# Tested	# Pass	% Pass	% Grade Pass		
B'ville Early College Hs	94	86	77	82%	84	70	74%	84	64	68%	68%		
Hanna High School	36	34	23	64%	33	19	53%	32	18	50%	50%		
Lopez High School	91	90	50	55%	75	28	31%	74	24	26%	26%		
Pace High School	60	52	32	53%	59	35	58%	51	26	43%	43%		
Porter High School	20	16	6	30%	15	5	25%	13	5	25%	25%		
Rivera High School	89	85	50	56%	86	41	46%	83	35	39%	39%		
Veterans Memorial H S	34	31	19	56%	33	18	53%	31	16	47%	47%		
<b>Total</b>	<b>424</b>	<b>394</b>	<b>257</b>	<b>61%</b>	<b>385</b>	<b>216</b>	<b>51%</b>	<b>368</b>	<b>188</b>	<b>44%</b>	<b>44%</b>		

ECHS 11th				ELAR			Math			All Subjects			
Building	Active 6/29/2023	# Tested	# Pass	% Pass	# Tested	# Pass	% Pass	# Tested	# Pass	% Pass	% Grade Pass		
B'ville Early College Hs	90	87	83	92%	87	72	80%	86	70	78%	78%		
Hanna High School	33	32	22	67%	26	18	55%	26	17	52%	52%		
Lopez High School	88	88	67	76%	86	57	65%	86	56	64%	64%		
Pace High School	96	96	70	73%	94	66	69%	94	59	61%	61%		
Porter High School	35	35	24	69%	34	23	66%	34	20	57%	57%		
Rivera High School	80	80	57	71%	76	53	66%	76	44	55%	55%		
Veterans Memorial H S	24	24	20	83%	22	16	67%	22	15	63%	63%		
<b>Total</b>	<b>446</b>	<b>442</b>	<b>343</b>	<b>77%</b>	<b>425</b>	<b>305</b>	<b>68%</b>	<b>424</b>	<b>281</b>	<b>63%</b>	<b>63%</b>		

ECHS 12th				ELAR			Math			All Subjects			
Building	Active 6/29/2023	# Tested	# Pass	% Pass	# Tested	# Pass	% Pass	# Tested	# Pass	% Pass	% Grade Pass		
B'ville Early College Hs	71	62	61	86%	61	58	82%	60	56	79%	79%		
Hanna High School	26	24	13	50%	23	17	65%	23	12	46%	46%		
Lopez High School	101	101	74	73%	99	65	64%	99	59	58%	58%		
Rivera High School	84	77	42	50%	73	42	50%	73	32	38%	38%		
Veterans Memorial H S	24	24	21	88%	23	18	75%	23	16	67%	67%		
<b>Total</b>	<b>306</b>	<b>288</b>	<b>211</b>	<b>69%</b>	<b>279</b>	<b>200</b>	<b>65%</b>	<b>278</b>	<b>175</b>	<b>57%</b>	<b>57%</b>		

### TSI P-TECH Report

P-TECH 9th				ELAR			Math			All Subjects			
Building	Active 6/29/2023	# Tested	# Pass	% Pass	# Tested	# Pass	% Pass	# Tested	# Pass	% Pass	% Grade Pass		
Hanna High School	6	6	0	0%	4	0	0%	4	0	0%	0%		
Lopez High School	1	1	0	0%	0	0	0%	0	0	0%	0%		
Pace High School	17	17	5	29%	12	4	24%	12	3	18%	18%		
Porter High School	13	12	2	15%	11	7	54%	11	2	15%	15%		
Rivera High School	1	1	0	0%	1	0	0%	1	0	0%	0%		
Veterans Memorial H S	14	14	1	7%	8	1	7%	8	0	0%	0%		
<b>Total</b>	<b>52</b>	<b>51</b>	<b>8</b>	<b>15%</b>	<b>36</b>	<b>12</b>	<b>23%</b>	<b>36</b>	<b>5</b>	<b>10%</b>	<b>10%</b>		

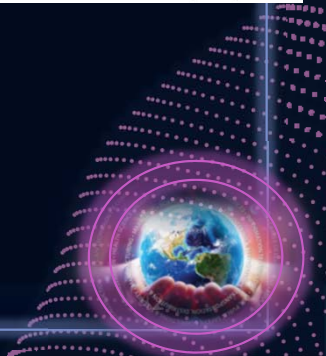
P-TECH 10th				ELAR			Math			All Subjects			
Building	Active 6/29/2023	# Tested	# Pass	% Pass	# Tested	# Pass	% Pass	# Tested	# Pass	% Pass	% Grade Pass		
Hanna High School	17	17	9	53%	12	7	41%	12	6	35%	35%		
Porter High School	25	25	6	24%	20	6	24%	20	3	12%	12%		
Veterans Memorial H S	14	3	0	0%	5	0	0%	1	0	0%	0%		
<b>Total</b>	<b>56</b>	<b>45</b>	<b>15</b>	<b>27%</b>	<b>37</b>	<b>13</b>	<b>23%</b>	<b>33</b>	<b>9</b>	<b>16%</b>	<b>16%</b>		

P-TECH 11th				ELAR			Math			All Subjects			
Building	Active 6/29/2023	# Tested	# Pass	% Pass	# Tested	# Pass	% Pass	# Tested	# Pass	% Pass	% Grade Pass		
Hanna High School	11	11	6	55%	10	6	55%	10	6	55%	55%		
Porter High School	12	11	4	33%	8	6	50%	8	3	25%	25%		
<b>Total</b>	<b>23</b>	<b>22</b>	<b>10</b>	<b>43%</b>	<b>18</b>	<b>12</b>	<b>52%</b>	<b>18</b>	<b>9</b>	<b>39%</b>	<b>39%</b>		

P-TECH 12th				ELAR			Math			All Subjects			
Building	Active 6/29/2023	# Tested	# Pass	% Pass	# Tested	# Pass	% Pass	# Tested	# Pass	% Pass	% Grade Pass		
Hanna High School	15	14	9	60%	13	8	53%	13	8	53%	53%		
<b>Total</b>	<b>15</b>	<b>14</b>	<b>9</b>	<b>60%</b>	<b>13</b>	<b>8</b>	<b>53%</b>	<b>13</b>	<b>8</b>	<b>53%</b>	<b>53%</b>		

### TSI Cumulative Report

Grade 8				ELAR			Math			All Subjects			
Building	Active 6/29/2023	# Tested	# Pass	% Pass	# Tested	# Pass	% Pass	# Tested	# Pass	% Pass	% Grade Level Pass		
Besteiro Middle School	187	173	15	8%	21	3	2%	21	2	10%	1%		
Faulk Middle School	329	205	31	9%	51	23	7%	43	15	35%	5%		
Garcia Middle School	330	314	23	7%	73	5	2%	71	1	1%	0%		
Lucio Middle School	273	247	37	14%	31	13	5%	31	10	32%	4%		
Manzano Middle School	316	297	31	10%	72	21	7%	71	15	21%	5%		
Oliveira Middle School	300	286	31	10%	55	20	7%	55	11	20%	4%		
Perkins Middle School	211	193	14	7%	19	5	2%	18	3	17%	1%		
Stell Middle School	292	275	12	4%	52	1	0%	50	0	0%	0%		
Stillman Middle School	375	364	55	15%	91	23	6%	89	14	16%	4%		
Vela Middle School	253	235	46	18%	48	16	6%	47	15	32%	6%		
<b>Total</b>	<b>2866</b>	<b>2589</b>	<b>295</b>	<b>10%</b>	<b>513</b>	<b>130</b>	<b>5%</b>	<b>496</b>	<b>86</b>	<b>17%</b>	<b>3%</b>		





# ECHS/ Dual Enrollment

## TSIA2



## TSIA2 Resources



Tier I & Tier II

Educational technology platform available to middle and high schools. IXL provides skill alignments. Look for Skill Plans, click on Test Prep, and select



Tier I & Tier II

Embedded curriculum provided by a designated ELAR and math teacher at each middle school and high school site.



Tier II

Upon completion of test, students are assigned Learning Locator™ codes that will deliver specific materials targeted to the growth areas identified on their Individual Score Reports. Find targeted materials using student codes at: <https://accuplacer.pearsonperspective.com/perspective/landingPage>

# **ECHS/ Dual Enrollment**

## **TSIA2**

- **TSIA2- Middle School**  
All 8th graders take PAA- September 25- November 3, 2023  
All 8th graders take TSIA2 ELAR- November 6- December 21, 2023  
8th graders Algebra I take TSIA2 Math- Deadline- May 1-30, 2024
- **8 hours of tutorial required before retesting/ 10 hours for middle school**





# Exit Ticket

Refer to the copies of the OBM's in your folder and complete one entry on your name tent

**My contribution impacts the following CCRSM benchmarks:**

Benchmark 1 Benchmark 2 Benchmark 3 Benchmark 4 Benchmark 5 Benchmark 6

**I plan to improve Outcome Based Measures by:**

- Monitoring TSI district resources for effectiveness by identifying correlations between usage and passing rates
- \_\_\_\_\_
- \_\_\_\_\_

# ECHS/ Dual Enrollment

## TSIA2

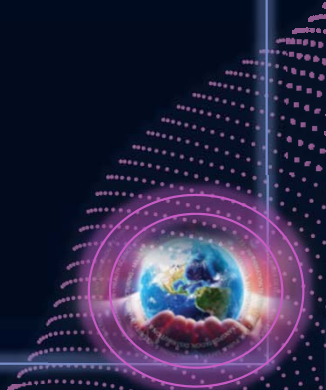
- **Yearlong courses- Math1314, ENGL1301**  
**Students that have not met TSI prerequisites for these courses should only be allowed to stay in the BISD dual enrollment course for the first six weeks. If the student has not passed TSI by 9/22/23, student needs to be moved into Algebra II or English III course.**



# ECHS/ Dual Enrollment

## Cohort Scheduling

- **All ECHS cohort students must be enrolled in the AVID elective (9th-12th grades)**
- **Academic core classes should be Honors**
- **Cohort should not be double coded with regular students. May double code with STAMP/STEM/SPACE**



# ECHS/ Dual Enrollment

## Adjuncts

- **Must be assigned a BISD teacher of record**
- **Check TSC Early Alerts for progress**



# ECHS/ Dual Enrollment

## AVID

- CCI
- Visitations for Hanna, Porter, Pace and Vets from AVID Leadership
- AVID Elective Teachers PLCs and on-going Professional Development
- Initiatives-- G-Force and TSIA2



# P-TECH

## Benchmark 1- School Design

Hanna: [P-TECH - Hanna Early College High School \(bisd.us\)](http://bisd.us)

Porter: [P-TECH - Porter Early College High School \(bisd.us\)](http://bisd.us)

Pace: [P-TECH - Pace Early College High School \(bisd.us\)](http://bisd.us)

Veterans: [P-TECH - Veterans Memorial Early College High School \(bisd.us\)](http://bisd.us)





## Path to Designation



### Path to P-TECH Designation



#### Planning Year

- Engage in 12-18 months of P-TECH planning.
- Recruit the first 9<sup>th</sup> grade P-TECH cohort.

**Year 0**



#### Provisional

- Grow cohorts, improve programming, and build strong partnerships.
- Implement all benchmark design elements.
- Receive OBM data for informational purposes only.

**Years 1-5**



#### Apply for Designation

**Year 5**

#### Designated (Year 6)

Campuses that meet access, achievement, and attainment Designated OBMs and implement all design elements receive Designated status.

#### Needs Improvement (Year 6)

Campuses that do not meet access, achievement, and attainment Designated OBM criteria are considered Needs Improvement.



**Year 7+**

**Designated**  
Meet Designated OBMs and implement all design elements.

Campuses must continue to meet Designated OBMs yearly to maintain Designated status.



**Year 7+**

**Designated with Distinctions**  
Campus is eligible for Designated with Distinction status if the campus is Designated and meets Distinction OBM criteria.



**Years 6-8**

Receive targeted technical assistance to improve OBMs. Campuses may receive Designated status if OBMs are met prior to Year 9.



**Year 9**

Receive Designated status if Designated OBMs met.

Removed from network if Designated OBMs not met.

**Benchmark 1: School Design**  
**OBM: Achievement, Attainment**





THANK YOU