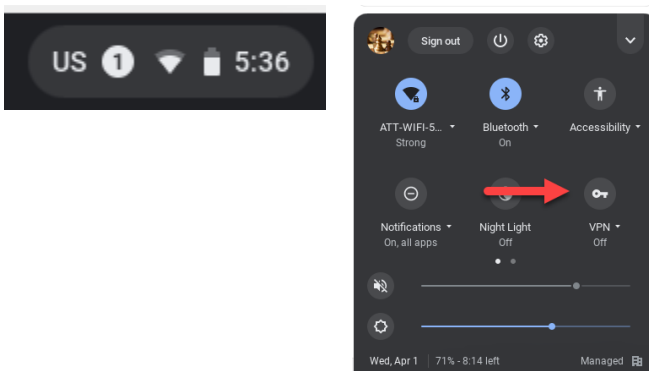
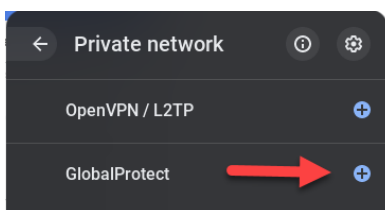


Medford School District – Chromebook VPN and Remote Desktop Instructions

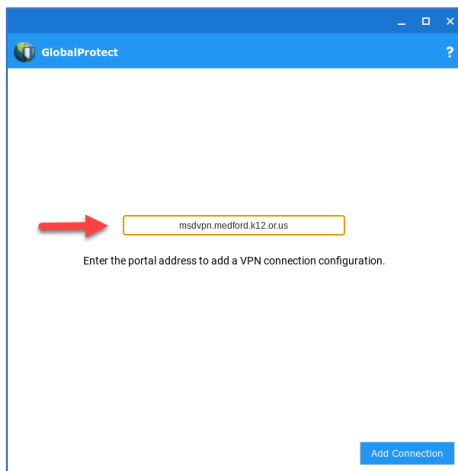
1. Click on the clock, located in the lower-right hand corner of the screen and click on 'VPN'



2. Click the blue + next to GlobalProtect

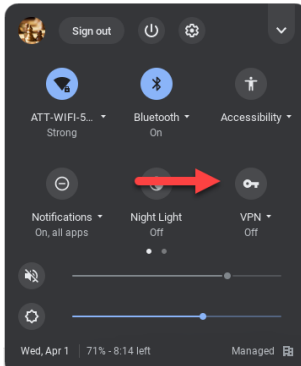


3. In the address field, fill in the address **msdvpn.medford.k12.or.us**

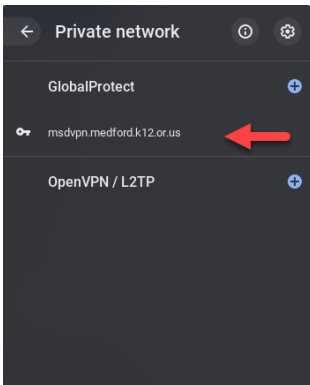


Medford School District – Chromebook VPN and Remote Desktop Instructions

- Again, click on the clock, located in the lower-right hand corner of the screen and click on 'VPN'



- Click on the text msdvpn.medford.k12.or.us



- After a minute a box prompting you for your credentials will appear. Enter your credentials [district username (**first.last**) and district password]
 - Click on connect

A screenshot of the 'GlobalProtect Login' form. The form has a blue header with the text 'GlobalProtect Login'. Below the header, it says 'Enter login credentials'. There are three input fields: 'Portal' (containing 'msdvpn.medford.k12.or.us'), 'first.last', and 'network password'. A blue 'Connect' button is at the bottom right.

At this time, continue the instructions in the [VPN GlobalProtect Installation and Remote Desktop Connection Chromebook](#) document for the steps to connect to your files and Teacher Desktop