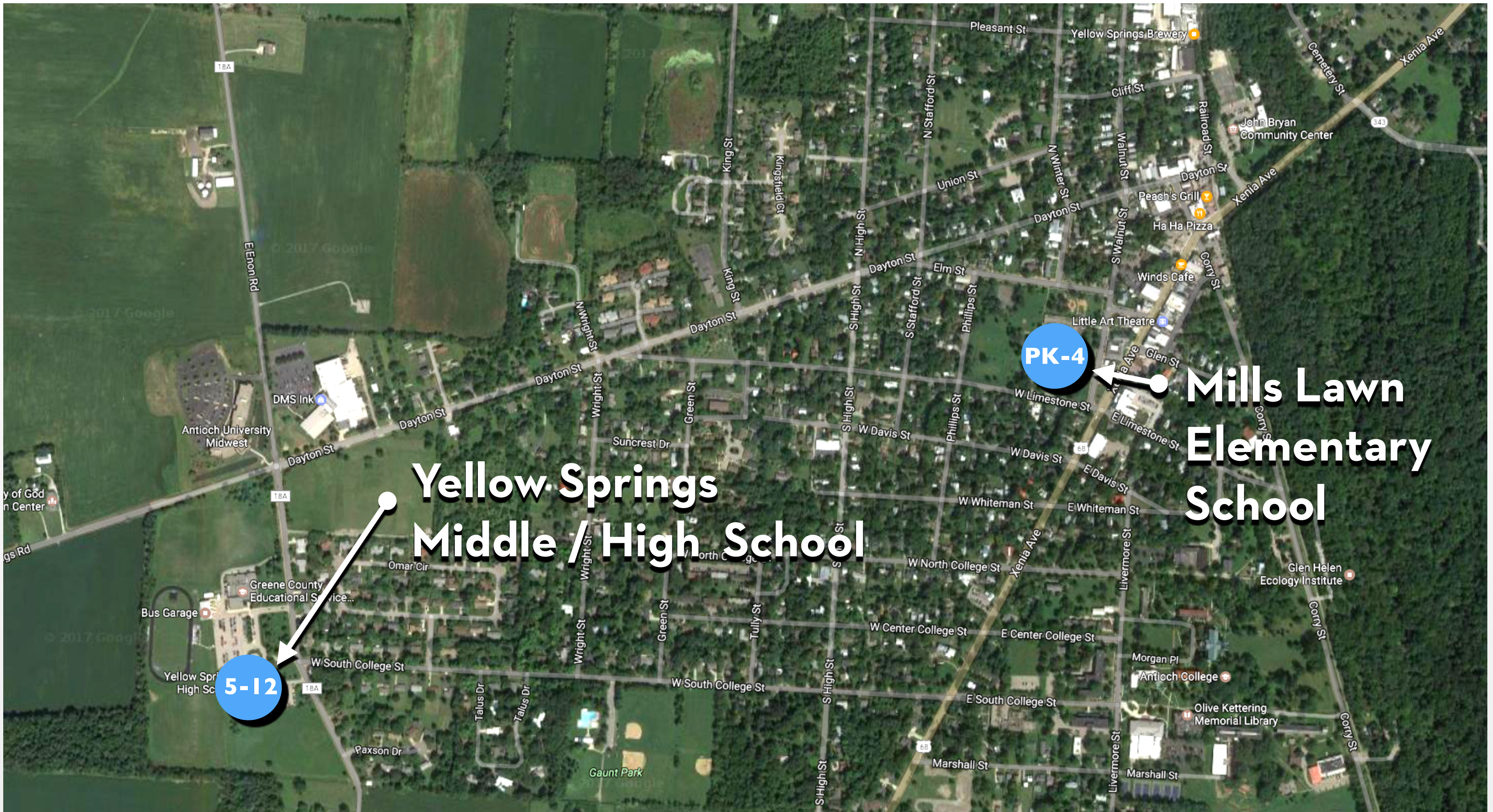




**Yellow Springs  
Middle / High School**

**Mills Lawn  
Elementary  
School**





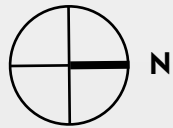
# PROPOSED SITES / GRADE CONFIGURATION

## Facility Master Plan





First Floor Plan



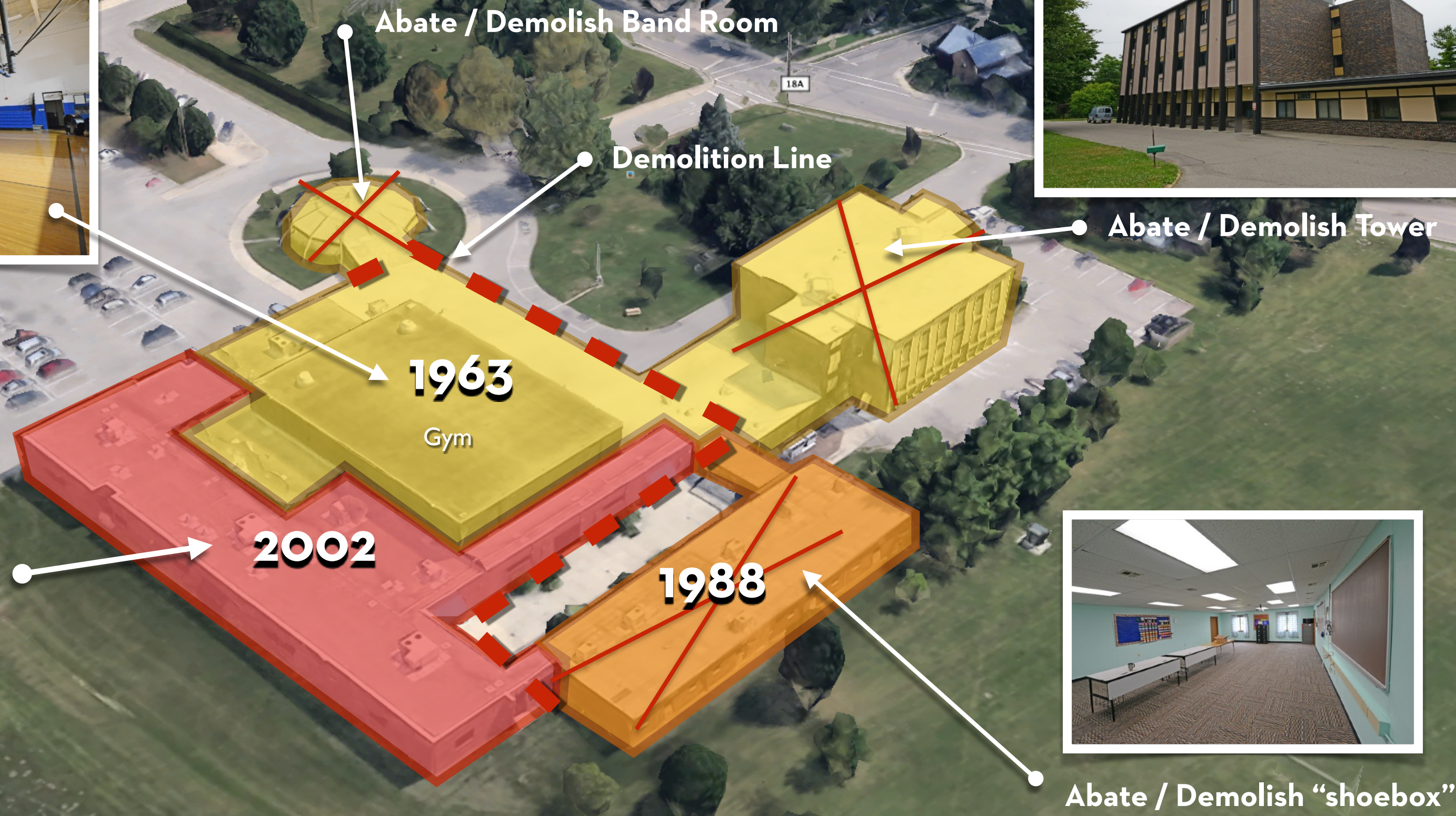
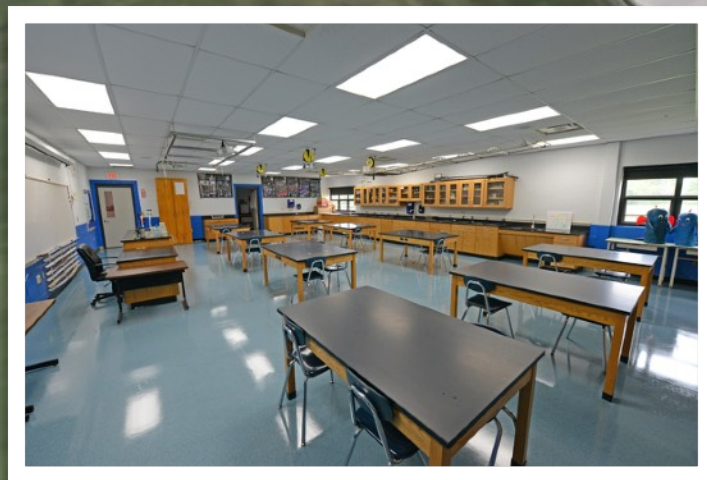
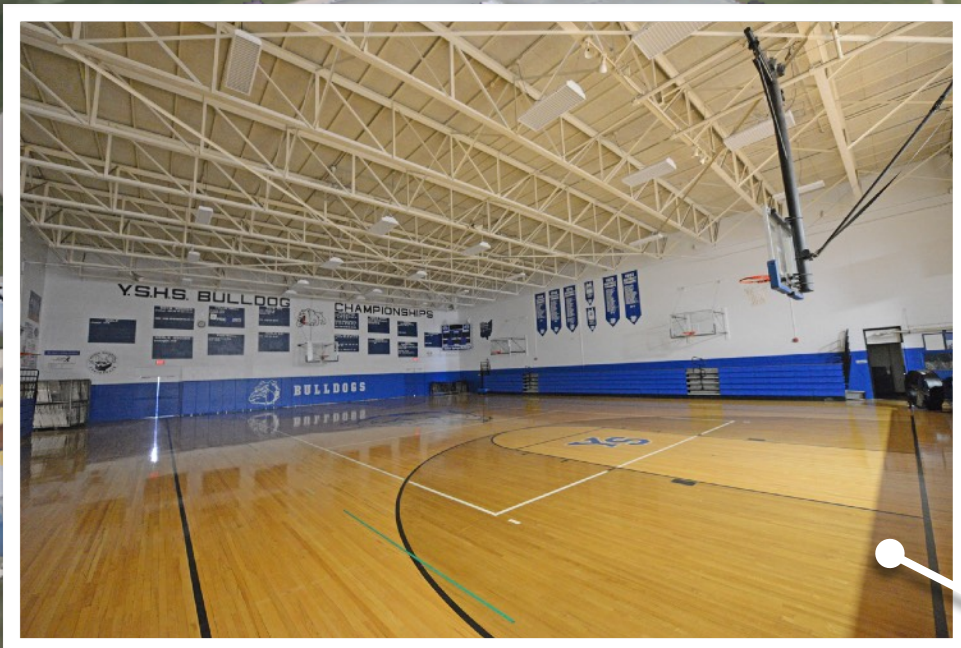
# EXISTING FLOOR PLAN (K-6)

## Mills Lawn Elementary School













# PROPOSED SITE PLAN (5-12)

## Middle School / High School

**DRAFT**





# PROPOSED FLOOR PLAN (5-12)

## Middle School / High School

**DRAFT**



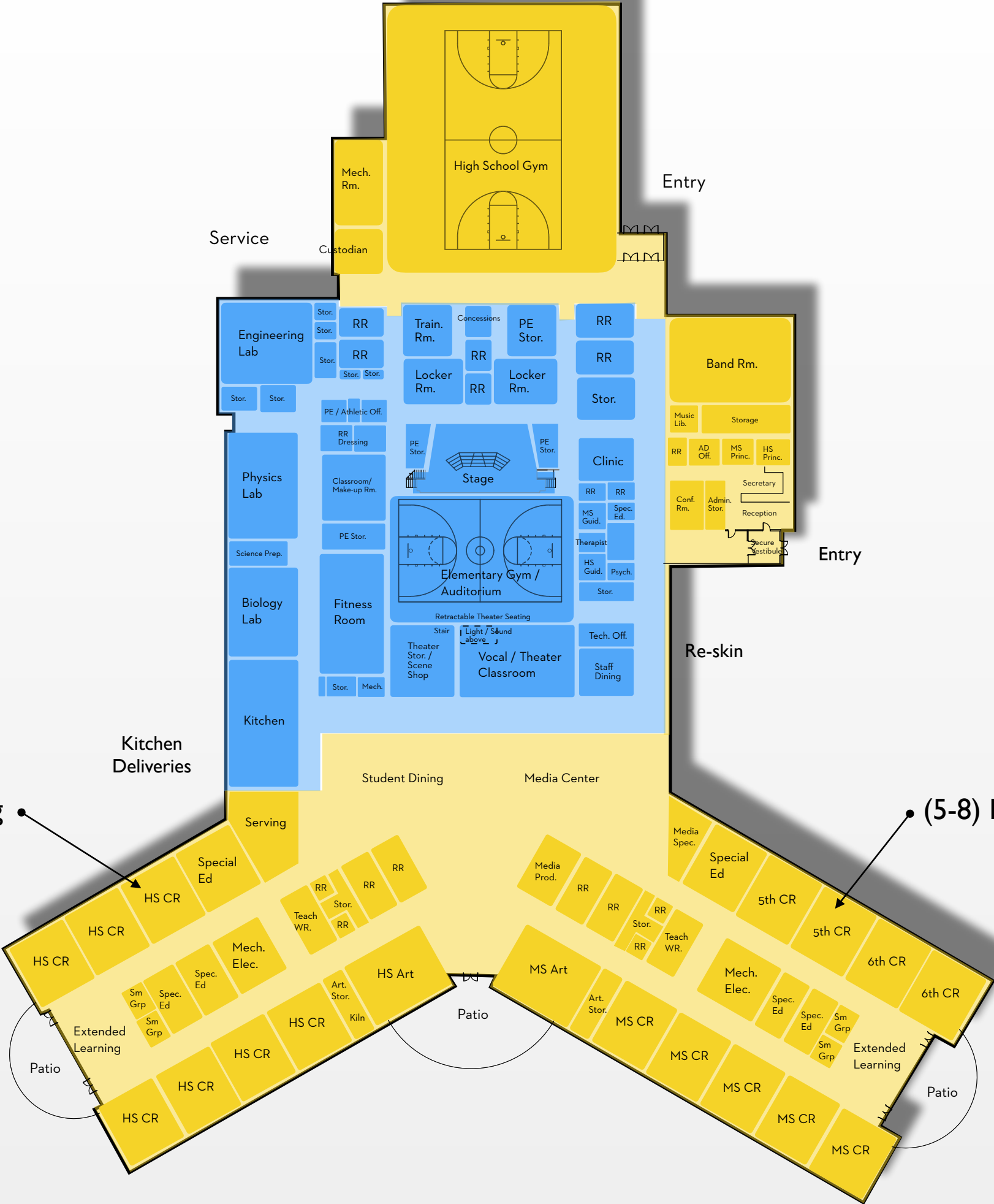
**KEY**

Additions

Renovations

(9-12) High School Wing

(5-8) Middle School Wing





SCHOOLS	LOCATION	SCOPE	SIZE
PK-4	Mills Lawn (S. Walnut St.)	Renovation	47,324 sf
5-12	Middle School / High School (E. Enon Rd.)	Partial Demolition Renovation Addition	98,641 sf
			<b>145,965 sf</b>

# PROJECT SCOPE

## Facility Master Plan



# SCHEDULE

- Community Vote: Nov. 7, 2023
- Design: Jan. 2024 - Jan. 2025
- Construction: Spring 2025 - 2026/2027 \*

\* final schedule / owner move-in date tbd by  
Design and Construction Management Team