



**Addison Northwest School District  
Vergennes, VT**

**2022-23 Enrollment Projection Report  
Spring Update**

# Table of Contents

Section	Page
Enrollment Summary Spring Update.....	1
Historical Enrollment Table Spring Update.....	2
Projected Enrollment Table Spring Update.....	3
Historical & Projected Enrollment in Grade Combinations .....	4
October 2022 vs. Spring 2023 Enrollment by Grade.....	5
Projections October 2022 vs. Spring 2023.....	6
Reliability and Use of this Document .....	7

# Enrollment Summary Spring Update

The global pandemic continues to influence our nation's public health and economic stability in unpredictable ways. As such, it is still too early to identify many of the factors that could impact school enrollments. Over the past school year, we have seen fluctuations in the real estate market and job trends, which have impacted student attendance patterns. Moreover, during the past school year, we have seen how school enrollment patterns can differ substantially from one district to another, with some districts losing students while others experience an influx of students.

We are pleased to send you this report displaying the past, present, and projected enrollments for the District. These ten-year projections are designed to provide the District with yearly, up-to-date enrollment information that can be used by boards and administrators for effective planning and allocation of resources. Included in this report are graphs representing historical and projected grade-by-grade enrollments, as well as historical and projected enrollments in grade combinations. We have received the figures given to us by the District, and we assume that the method of collecting the enrollment data has been consistent from year to year.

Enrollment projections are more reliable in Years #1-4 in the future and less reliable in the "out-years." Projections six to ten years out may serve as a guide to future enrollments and are useful for planning purposes. For more information, please refer to the Reliability and Use of This Document section.

We are pleased to send you this Spring Update.

We have reviewed the updated Spring Enrollment and note that the enrollment growth is similar to the previous projection for Grades K-12. We look forward to fully updating data in the Fall of 2023.

# Historical Enrollment Spring Update

School District: Addison Northwest SD, VT - Spring Update

4/6/2023

**NOTE: Spring enrollment data provided by the District.**

Historical Enrollment By Grade																			
Birth Year	Births*	School Year	PK	K	1	2	3	4	5	6	7	8	9	10	11	12	UNGR	K-12	PK-12
2007	94	2012-13	0	34	80	86	70	85	72	94	77	89	88	83	92	119	0	1069	1069
2008	69	2013-14	68	66	70	73	83	69	82	73	91	72	88	81	86	93	0	1027	1095
2009	70	2014-15	68	61	77	73	75	85	68	83	67	84	75	87	82	89	0	1006	1074
2010	81	2015-16	66	64	56	79	70	77	84	67	90	64	78	68	85	80	0	962	1028
2011	47	2016-17	79	56	61	79	66	67	68	79	67	88	66	82	67	87	0	933	1012
2012	70	2017-18	76	64	56	63	54	66	68	67	82	66	92	65	81	64	0	888	964
2013	58	2018-19	21	58	59	56	62	50	64	68	70	85	67	95	72	86	2	894	915
2014	73	2019-20	26	52	57	62	58	65	50	62	71	67	87	66	99	73	0	869	895
2015	72	2020-21	25	57	50	51	56	56	58	52	62	69	67	85	65	101	0	829	854
2016	88	2021-22	23	81	63	51	56	63	59	59	52	67	72	71	85	64	1	844	867
2017	65	Fall 2022	23	69	82	66	52	60	68	61	64	56	62	73	68	88	0	869	892
2023 Spring Update			30	67	81	64	52	60	68	61	65	56	63	71	67	86	0	861	891

\*Birth data provided by Public Health Vital Records Departments in each state.

Historical Enrollment in Grade Combinations									
Year	K-4	K-5	K-6	K-8	5-8	6-8	7-8	7-12	9-12
2012-13	355	427	521	687	332	260	166	548	382
2013-14	361	443	516	679	318	236	163	511	348
2014-15	371	439	522	673	302	234	151	484	333
2015-16	346	430	497	651	305	221	154	465	311
2016-17	329	397	476	631	302	234	155	457	302
2017-18	303	371	438	586	283	215	148	450	302
2018-19	285	349	417	572	287	223	155	475	320
2019-20	294	344	406	544	250	200	138	463	325
2020-21	270	328	380	511	241	183	131	449	318
2021-22	314	373	432	551	237	178	119	411	292
Fall 2022	329	397	458	578	249	181	120	411	291
Spring 2023	324	392	453	574	250	182	121	408	287

Historical Percentage Changes			
Year	K-12	Diff.	%
2012-13	1069	0	0.0%
2013-14	1027	-42	-3.9%
2014-15	1006	-21	-2.0%
2015-16	962	-44	-4.4%
2016-17	933	-29	-3.0%
2017-18	888	-45	-4.8%
2018-19	894	6	0.7%
2019-20	869	-25	-2.8%
2020-21	829	-40	-4.6%
2021-22	844	15	1.8%
Fall 2022	869	25	3.0%
Change	-200		-18.7%

# Projected Enrollment Spring Update

School District: **Addison Northwest SD, VT - Spring Update**

4/6/2023

Note: Spring projections are based on updated Spring enrollment data.

Enrollment Projections By Grade*																				
Birth Year	Births*		School Year	PK	K	1	2	3	4	5	6	7	8	9	10	11	12	UNGR	K-12	PK-12
2017	65		Spring 2023	30	67	81	64	52	60	68	61	65	56	63	71	67	86	0	861	891
2018	61		2023-24	23	56	69	80	64	53	61	69	63	66	55	64	70	68	0	838	861
2019	76		2024-25	23	70	57	68	81	66	53	62	71	64	65	56	63	71	0	847	870
2020	66		2025-26	23	61	72	56	68	83	67	54	64	72	63	66	55	64	0	845	868
2021	71	(prov.)	2026-27	23	66	63	71	56	70	84	68	56	65	71	64	65	56	0	855	878
2022	68	(est.)	2027-28	24	63	68	62	71	58	71	85	70	57	64	72	63	66	0	870	894
2023	68	(est.)	2028-29	24	63	65	67	62	73	58	72	87	71	56	65	71	64	0	874	898
2024	70	(est.)	2029-30	24	65	65	64	67	64	74	59	74	89	70	57	64	72	0	884	908
2025	69	(est.)	2030-31	24	63	67	64	64	69	65	75	61	75	88	71	56	65	0	883	907
2026	69	(est.)	2031-32	24	64	65	66	64	66	70	66	77	62	74	89	70	57	0	890	914
2027	69	(est.)	2032-33	24	64	66	64	66	66	67	71	68	78	61	75	87	71	0	904	928

Note: Ungraded students (UNGR) often are high school students whose anticipated years of graduation are unknown, or students with special needs - UNGR not included in Grade Combinations for 7-12, 9-12, etc.

Based on an estimate of births

Based on children already born

Based on students already enrolled

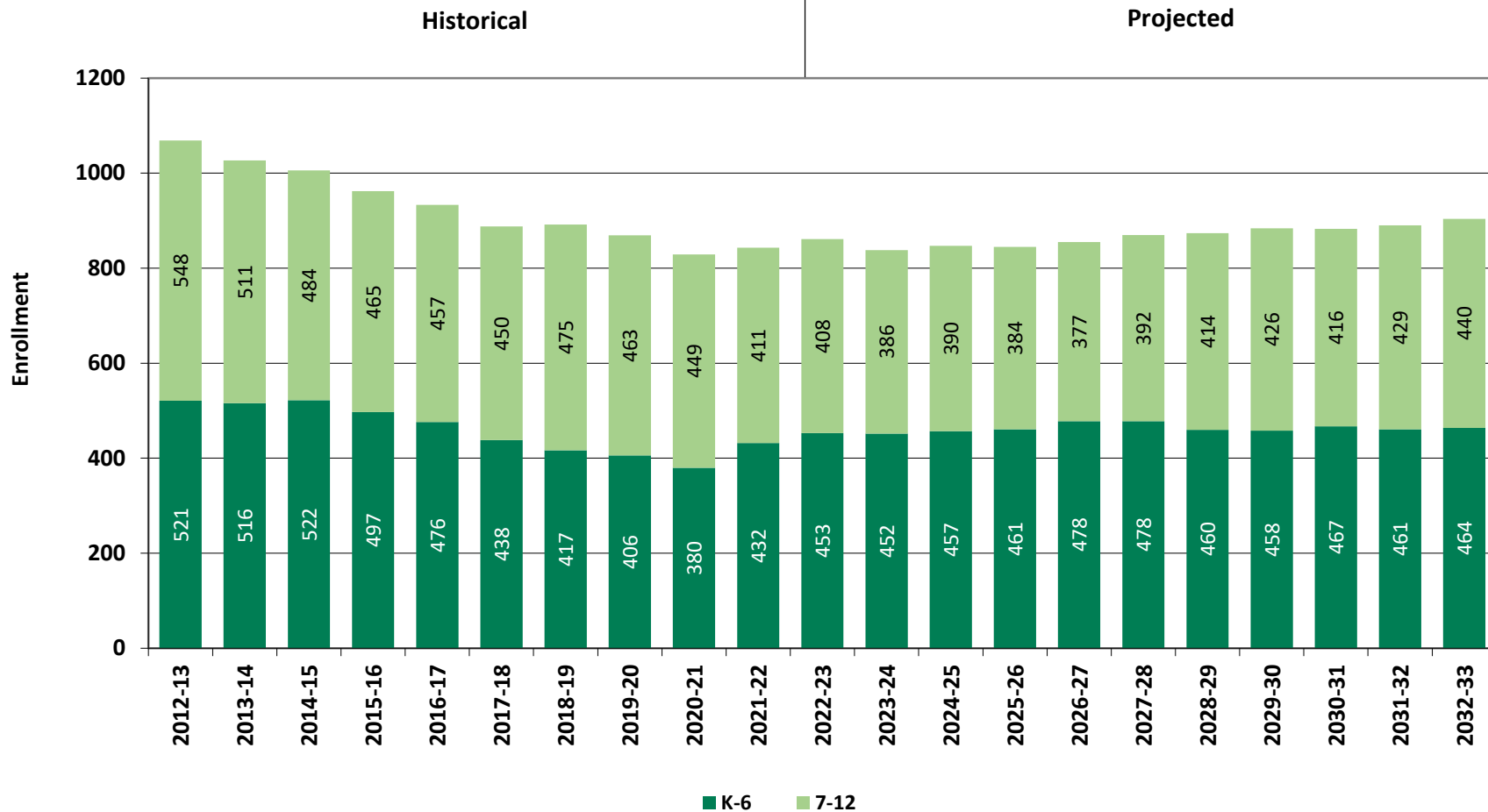
\*Birth data provided by Public Health Vital Records Departments in each state.

Projected Enrollment in Grade Combinations*									
Year	K-4	K-5	K-6	K-8	5-8	6-8	7-8	7-12	9-12
Spring 2023	324	392	453	574	250	182	121	408	287
2023-24	322	383	452	581	259	198	129	386	257
2024-25	342	395	457	592	250	197	135	390	255
2025-26	340	407	461	597	257	190	136	384	248
2026-27	326	410	478	599	273	189	121	377	256
2027-28	322	393	478	605	283	212	127	392	265
2028-29	330	388	460	618	288	230	158	414	256
2029-30	325	399	458	621	296	222	163	426	263
2030-31	327	392	467	603	276	211	136	416	280
2031-32	325	395	461	600	275	205	139	429	290
2032-33	326	393	464	610	284	217	146	440	294

Projected Percentage Changes			
Year	K-12	Diff.	%
Spring 2023	861	0	0.0%
2023-24	838	-23	-2.7%
2024-25	847	9	1.1%
2025-26	845	-2	-0.2%
2026-27	855	10	1.2%
2027-28	870	15	1.8%
2028-29	874	4	0.5%
2029-30	884	10	1.1%
2030-31	883	-1	-0.1%
2031-32	890	7	0.8%
2032-33	904	14	1.6%
Change	43		5.0%

\*Projections should be updated annually to reflect changes in in/out-migration of families, real estate sales, residential construction, births, and similar factors.

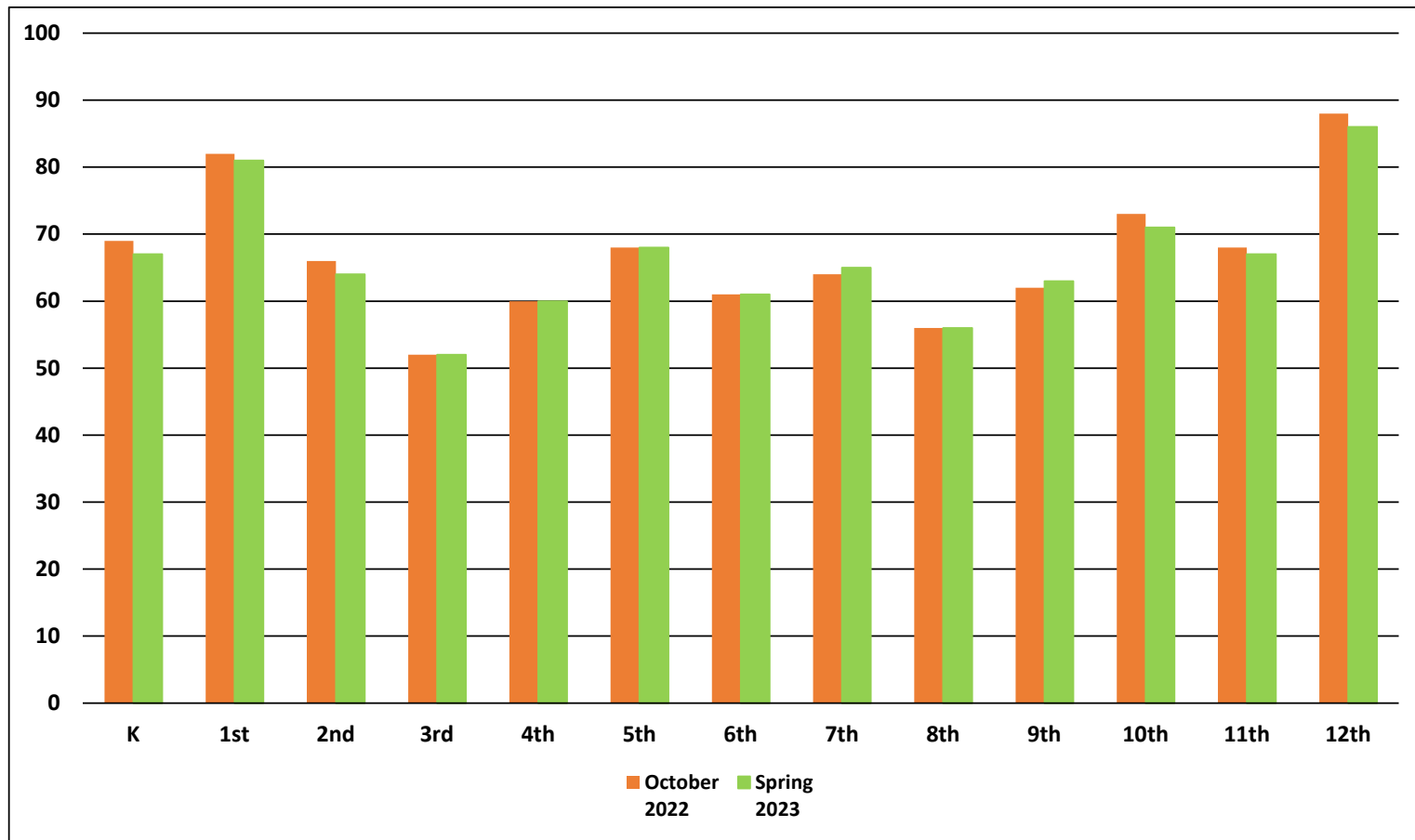
# **Historical & Projected Enrollments in Grade Combinations**



Note: Projections are based on Spring 2023 data.

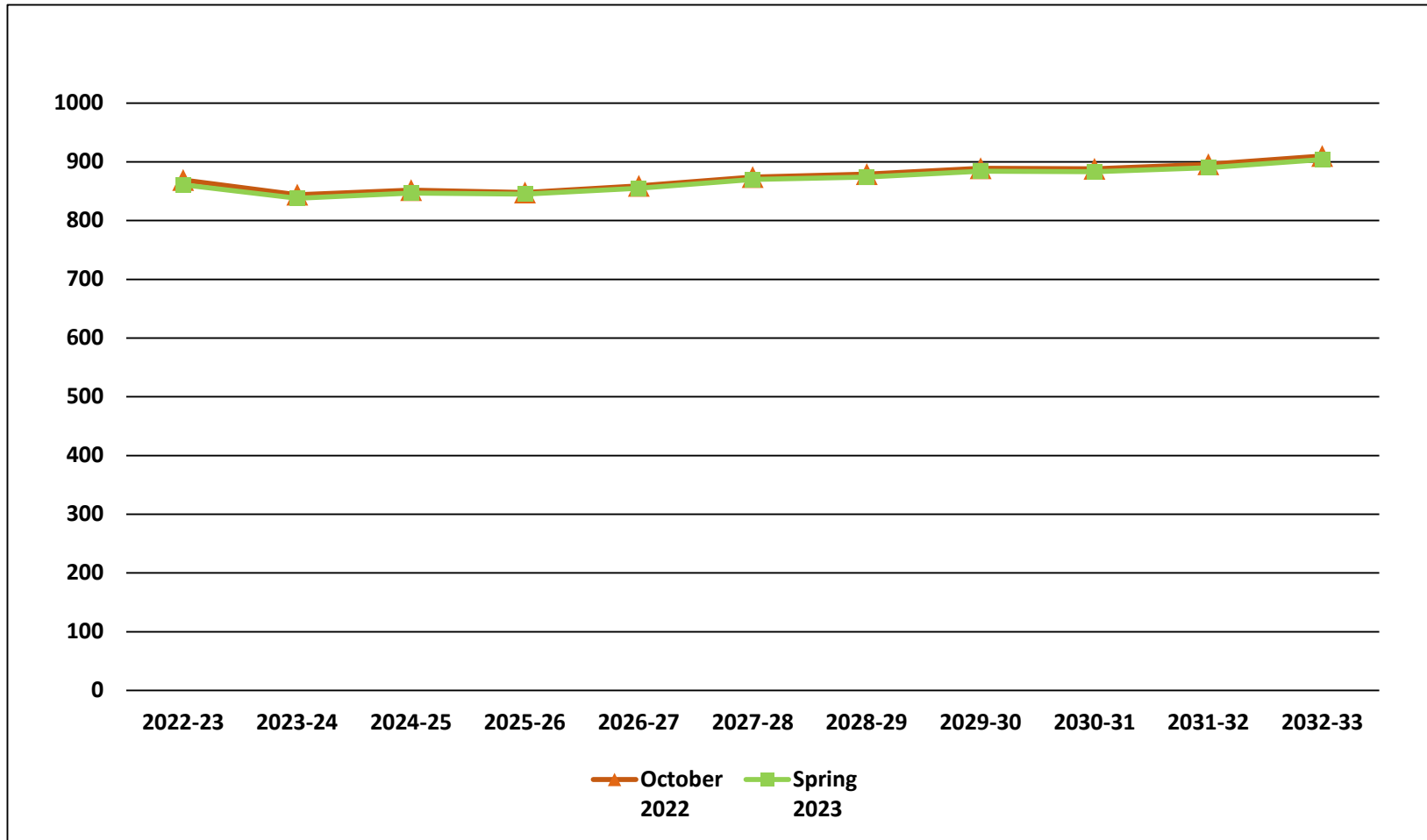
**NESDEC**

## October 2022 vs. Spring 2023 Enrollment by Grade



©New England School Development Council • 508-481-9444 • [www.nesdec.org](http://www.nesdec.org)

## Projections October 2022 vs. Spring 2023 Data





# Reliability and Use of this Document

## PROJECTION METHODOLOGY

Cohort component (survival) technique is a frequently used method of preparing enrollment forecasts. NESDEC uses this method, but modifies it in order to move away from forecasts that are wholly computer- or formula-driven. Such modification permits the incorporation of important, current district-specific information into the generation of enrollment forecasts (such as in/out-migration of students, resident births, HUD-reported building permits, etc.). Percentages are calculated from the historical enrollment data to determine a reliable percentage of increase or decrease in enrollment between any two grades. For example, if 100 students enrolled in Grade 1 in 2018-19 increased to 104 students in Grade 2 in 2019-20, the percentage of survival would be 104%, or a ratio of 1.04. Ratios are calculated between each pair of grades or years in school over several recent years.

After study and analysis of the historical ratios, and based upon a reasonable set of assumptions regarding births, migration rates, retention rates, etc., ratios most indicative of future growth patterns are determined for each pair of grades. The ratios thus selected are applied to the present enrollment statistics to project into future years. The ratios are the key factors in the reliability of the projections, assuming validity of the data at the starting point.

## RELIABILITY OF ENROLLMENT PROJECTIONS

Projections can serve as useful guides to school administrators for educational planning. Enrollment projections are more reliable in Years #1-4 in the future and less reliable in the "out-years." Projections six to ten years out may serve as a guide to future enrollments and are useful for planning purposes, but they should be viewed as subject to change given the likelihood of potential shifts in underlying assumptions/trends, such as student migration, births as they relate to Kindergarten enrollment, and other factors.

Projections that are based upon **the children who already are in the district** (the current K-12 population only) will be the most reliable. The second level of reliability will be for those children already **born into the community but not yet old enough to be in school**. The least reliable category is the group for which an estimate must be made **to predict the number of births**, thereby adding additional uncertainty. See these three multi-colored groupings on the "Projected Enrollment" tab.

Annual updates allow for early identification of recent changes in historical trends. When the actual enrollment in a grade is significantly different (higher or lower) from the projected number, it is important (yet difficult) to determine whether this is a one-year aberration or whether a new trend may have begun. **In light of this possibility, NESDEC urges all school districts to have updated enrollment forecasts developed by NESDEC each October.** This service is available at no cost to affiliated school districts.

## USING THIS INFORMATION ELECTRONICALLY

If you would like to extract the information contained in this report for your own documents or presentations, you can use screenshots, which can be inserted into PowerPoint slides, Word documents, etc. Because screenshots create graphics, the image is not editable. Please feel free to contact us if you need assistance in this matter, by phone (508-481-9444) or by email ([ep@nesdec.org](mailto:ep@nesdec.org)).