



What is eLearning?

OFFICE OF CURRICULUM & INSTRUCTION



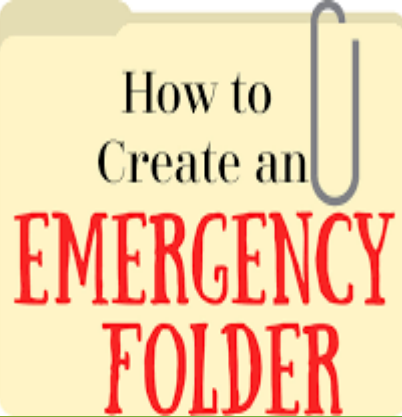


eLearning for School Make-up Days

eLearning Days are an opportunity for districts to provide continuous instruction that would otherwise be postponed due to weather or other disruptive interruptions (i.e., power outages, water main breaks, snow & ice, hurricanes, tornadoes, etc.)

eLearning Emergency Plans

All teachers must maintain an emergency eLearning electronic activity folder. This activity folder may contain items such as: word documents with directions and expectations to complete assignments, videos, instructional materials & worksheets, expectations for additional software app use, etc. This folder should be updated, at a minimum, every 9 weeks.

A graphic of a yellow folder with a paperclip. The text on the folder reads: "How to Create an EMERGENCY FOLDER".

How to
Create an
**EMERGENCY
FOLDER**



What happens on an eLearning Day?

On eLearning Days, students will not report physically to school but will instead work from home. Students will have regular assigned classwork and their teachers will be available electronically during office hours. Students will be required to complete and submit all assignments as well as communicate with their teachers during the emergency eLearning Day.



How will students and parents know if an eLearning Day will take place?

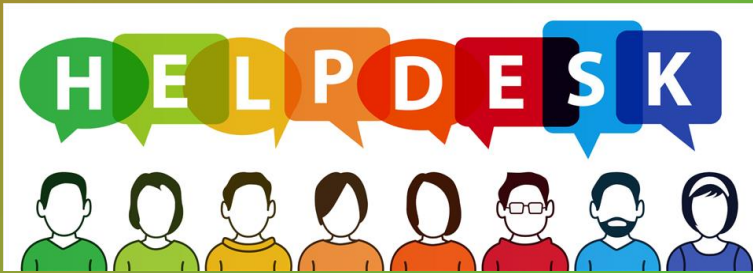
Hampton County School District (HCSD) will communicate school cancellations and the announcement of an eLearning Day through automated phone calls, the district's notification system, district/school websites, social media, and local media.



Microsoft Teams

How will students be informed about assignments for an eLearning Day?

Teachers will deliver content and post their assignments in Microsoft TEAMS. Students will download their assignments to their devices ahead of time at school as part of teachers' emergency plans.



How will students get help on their assignments on an eLearning Day?

All teachers will be available during designated eLearning office hours to provide assistance to students, give feedback on assignments, collaborate, and answer questions.



When will assignments be due?

As students complete their work, they should upload their assignments if Wi-Fi is available. If an internet connection is not available, they will have up to five school days after the last school cancellation to turn in assigned work.



School success starts
with attendance

How will eLearning be monitored and counted for attendance?

Teachers will assess the student's work and determine if the student has met the instructional goals for the day.

Students will be counted present when they:

- Complete and submit their digital assignments for the eLearning Day following the eLearning procedures

What are the differences between eLearning and vLearning?



e-Learning	v-Learning
<p>eLearning differs from traditional learning by providing instruction electronically at-home verses in a classroom setting. Unlike virtual learning, this type of learning rarely takes place in real-time. Instructors are reached through messaging platforms or email and in most cases, there is no live instruction. Most types of eLearning instruction occur through web-based formats, video modules, software apps, and uploaded assignments.</p> <p>eLearning is an alternative delivery method of instruction being provided during short term disruptions of school, such as inclement weather, utility outages, etc. (Emergency School Closures)</p>	<p>Virtual learning differs from traditional learning by providing instruction online rather than in-seat, in the classroom instruction. In most cases, virtual learning is taught in real-time with an instructor leading the class.</p> <p>Virtual learning is the exclusive use of technology resources for teaching and learning. Teachers will deliver synchronous (live) instruction at designated times and serve students through additional learning activities that are self-paced (asynchronous).</p>
<p>Asynchronous (self-paced instruction) Less interaction between students/teacher (Self-paced) Instruction may include recordings, videos, posted assignments, and/or additional learning packets that students work on independently.</p>	<p>Synchronous (live) & Asynchronous (self-paced) More interaction between students/teacher (live, real-time schedule with the students working together as a class) in addition to other assignments they work on independently.</p>
<p>Use digital tools that you and your students have practiced using in the classroom. Use online software for student practice and assessment or online activities from textbooks.</p>	<p>Use digital tools that you and your students have practiced using in the classroom. Use online software for student practice and assessment or online activities from textbooks.</p>
<p>In cases where students cannot access their work on an eLearning day due to connectivity issues, students will have five school days after returning to school to complete the assignments.</p>	<p>For school devices, Wi-Fi will be in operation at all our school locations and the range typically extends beyond the building into the parking lot. This may vary from school to school, location and proximity to the building itself. If a student cannot access TEAMS through the internet, they are expected to participate with their teacher using the phone number provided.</p>
<p>Attendance tracked/coded based on completed work</p>	<p>Attendance tracked during synchronous instruction and completion of work</p>
<p>Teachers will be expected to contact students, track virtual attendance and be available to students during virtual office hours.</p>	<p>Teachers will be expected to contact students and track virtual attendance during synchronous learning time</p>



Additional Information:
hcsd.k12.sc.us

OFFICE OF CURRICULUM & INSTRUCTION

