
WHAT IS SERVICE INTERSESSION WEEK?

Great week of service and personal growth

All students participate in similar but not exactly identical experiences

Three days of service learning outside the classroom

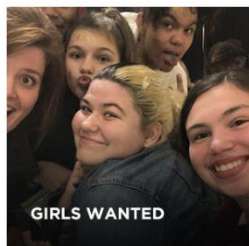
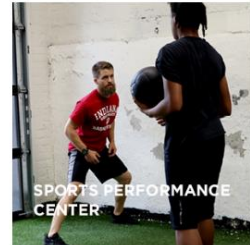
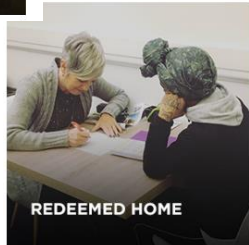
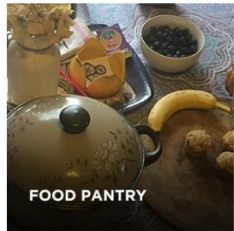
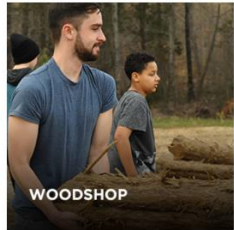
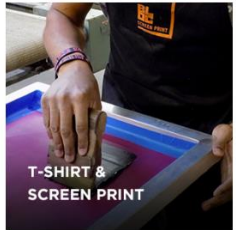
THURSDAY – RANKING OF CHOICES

Please be sure to complete the registration and ranking of choices in UltraCamp by the end of the day Friday, September 29th.

All students registered in UltraCamp by Friday, September 29, will be placed in groups for service locations based on preferences and using a blind lottery system if needed. Any students completing registration after September 29 will be placed in the service locations that have space available, taking into consideration your rankings as much as possible.

Please remind your parents and turn in your choices on time.

BLOC MINISTRIES



“BLOC was created to build connections and safe spaces for students, families and adults to thrive and succeed in spite of difficult circumstances. We’re a faith-based non-profit that focuses on healthy, personal relationships and activities that help to build hope, purpose, and vital life skills.”

Our day at BLOC MINISTRIES will be part discovery as we learn about its various ministries and part service as we assist them at one or more of their locations with ministry needs.

CINCINNATI PUBLIC SCHOOLS

We will be going to a Cincinnati Public School to connect with them for the day. Students will help with in-classroom tutoring to help newly relocated students to succeed in school or helping to paint a mural.

Some students will spend the day at Academy of World Languages and some will be at Douglass Elementary. They will need a packed, portable lunch for the day.



INRETURN – PAIRED WITH NEW LIFE



Students will spend half of the day at each venue; switching at lunch time.

InRETURN is a non-profit agency in Blue Ash that works with adults with traumatic brain injuries and other cognitive challenges including developmental disabilities, autism, and genetic disorders.

Students will work alongside InReturn associates to complete light manufacturing tasks.

InRETURN promotes a spirit of inclusion, community, respect and integrity.



NEW LIFE FURNITURE – PAIRED WITH INRETURN



Students will spend half of the day at each venue; switching at lunch time.

New Life Furniture Bank is a faith-based non-profit organization located in Blue Ash, Ohio, serving the **Greater Cincinnati area**. They collect gently used furniture from people who have extra; they inspect and clean it, then deliver the items directly to the homes of families in need. They believe in **the healing power of giving and receiving** to empower communities to come together and support those most vulnerable.

Students will have the opportunity to help sort donations and box these items up for delivering them to those in need!



TIKKUN FARM



Tikkun Farm, a 3.5 acre **farm** in the neighborhood of **Mt. Healthy** in Cincinnati, intends to be a place of healing, restoration and repair cultivated through meaningful work and spiritual practices. **Tikkun** is a Hebrew word meaning “repair” or “restore”. The phrase **Tikkun Olam** captures the collective life purpose of the Jewish people to “repair the world”.

Our day at Tikkun Farm will be part discovery as we learn about its various ministries and part service as we perform tasks designated by the owners as necessary to keeping the buildings and grounds in good condition.



CRAYONS 2 COMPUTERS WITH SHARED HARVEST



Students will spend half of the day at each venue; Starting at Crayons 2 Computers and moving to Shared Harvest at lunch time.

Crayons to Computers works to level the playing field in the classroom by ensuring that teachers can provide students in need the tools to succeed in school.

We will help them by sorting donated items to prepare them to be sent to schools. And we will learn more about the impact Crayons to Computers is having in the Cincinnati area and our part in their work.



SHARED HARVEST WITH CRAYONS 2 COMPUTERS



Students will spend half of the day at each venue; at Shared Harvest after lunch time.

Shared Harvest's mission is to find, rescue and distribute food to those currently living in poverty. They also work to raise awareness of the impact of poverty.

We will learn more about what Shared Harvest does and their impact in Cincinnati. We will assist in sorting and preparing food for distribution.

