

ELECTRICAL SCHEDULE

NO.	CONN.	SERVICE TO	RATING	VOLTS	PH	LOCATION	A.F.F.	REMARKS
E1	JB	LOAD CENTER	60.0A	120/208	3	FLOOR	6"	BTC, (2) PLACES
E2	DR	HEATED CABINET	1.8A	120	1	WALL	24"	TYP. (1) PLACE
E3	JB	LOAD CENTER	100.0A	120/208	3	FLOOR	6"	BTC, (1) PLACE

B FOODSERVICE ELECTRICAL SCHEDULE
FS-4 SCALE 1/4"=1'-0"

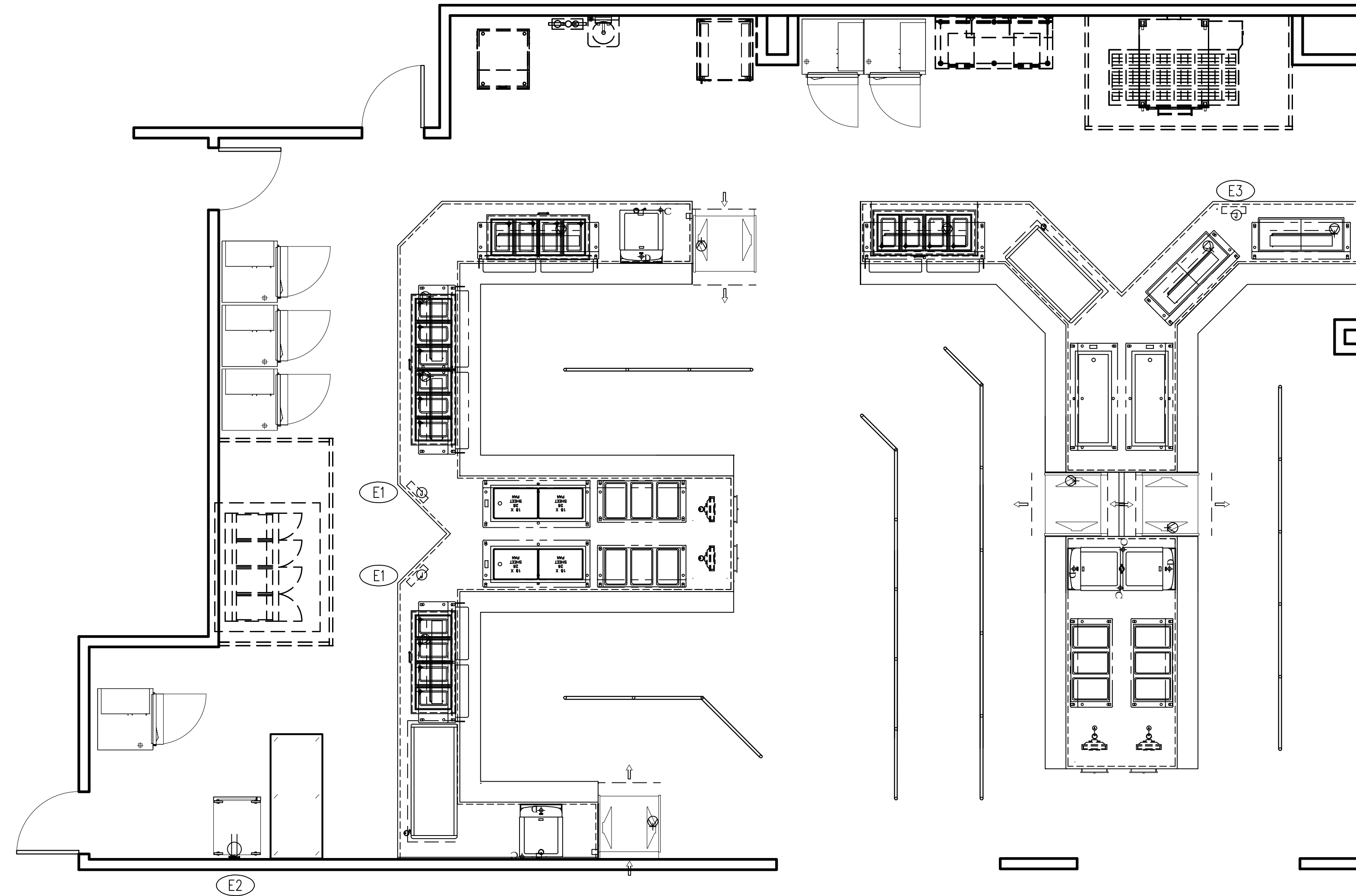
ELECTRICAL SYMBOLS					
	CSR	CONDUIT STUB BTC ON RECEPTACLE FURNISHED WITH EQUIPMENT		DS	DISCONNECT SWITCH FURNISHED AND INSTALLED BY DIV. 16
	CS	CONDUIT STUB UP/OUT FOR DIRECT CONNECTION		WPR	20 AMP WEATHERPROOF RECEPTACLE (SPRING COVER)
	DR	20 AMP DUPLEX RECEPTACLE MOUNT HORIZONTAL		BTC	BRANCH TO CONNECTION ON EQUIPMENT
	SR	SINGLE PURPOSE RECEPTACLE 1PH.		D	DATA
	SR	SINGLE PURPOSE RECEPTACLE 3PH.		FPB	FIRE PROTECTION BUZZER
	FR	FLUSH FLOOR RECEPTACLE		BSC	BEVERAGE SYSTEM CONDUIT
	PMR	PEDESTAL MOUNT RECEPTACLE		BTF	BRANCH TO FIXTURE
	DCR	DROP CORD RECEPTACLE		AFF	ABOVE FINISHED FLOOR
	JBC	JUNCTION BOX IN CEILING		DFA	DROP FROM ABOVE
	JBP	JUNCTION BOX ON PEDESTAL		SW	SWITCH
	JBW	JUNCTION BOX IN WALL		PMSR	PEDESTAL MOUNT SINGLE PURPOSE RECEPT. 1PH.

ELECTRICAL FIRE SYSTEM NOTE

INSTALLATION OF THE FIRE PROTECTION SYSTEM REQUIRES THAT ALL POWER UNDER HOOD APPLIANCES/ EQUIPMENT AND/OR OUTLETS AUTOMATICALLY SHUT OFF IN THE EVENT OF SYSTEM ACTUATION. THE SYSTEMS ARE PROVIDED WITH A SWITCH FOR THIS PURPOSE. THE ELECTRICAL CONTRACTOR IS TO PROVIDE ALL LABOR AND MATERIALS INCLUDING SHUNT TRIP BREAKERS, CONTRACTORS, INTERCONNECTING WIRING, ETC. TO INSURE PROPER SYSTEM OPERATIONS.

ELECTRICAL NOTES

- ALL DRAWINGS, ILLUSTRATIONS, DETAILS, ELEVATIONS, SCHEDULES AND ETC. ARE FOR REPRESENTATION OF EQUIPMENT PROVIDED BY BUDGET RESTAURANT SUPPLY. ALL (FS) DRAWINGS SHOULD BE VERIFIED WITH THE ARCHITECTURAL/MEP DRAWINGS FOR FURTHER INFORMATION.
- CONNECTIONS HAVE BEEN SHOWN IN LOCATIONS FOR THE SHORTEST OR MOST EFFICIENT RUN OR COMMON PRACTICE. THEY CAN BE ADJUSTED DUE TO UNFORESEEN BUILDING CONDITIONS OR ISSUES. ALL WORK IS TO BE DONE IN COMPLIANCE WITH ESTABLISHED CITY, STATE AND NATIONAL CODES. OUTLETS AND CONNECTIONS ARE INDICATED AT LOCATIONS THAT SHOULD TERMINATE AT WALL, FLOOR OR CEILINGS. FROM THIS POINT SHOULD BE BRANCHED TO CONNECTION POINT ON EACH PIECE OF EQUIPMENT. ALL DIMENSIONS SHOWN ARE FROM FINISHED FLOOR, FINISHED WALL AND FINISHED CEILING TO CENTERLINE OF OUTLET. DIMENSIONS SHOWN ARE TO BE VERIFIED BY CONTRACTOR AND ADJUSTED AS REQUIRED BY FOODSERVICE EQUIPMENT AND/OR FIELD CONDITIONS. RECEPTACLE SHALL BE MOUNTED VERTICALLY UNLESS OTHERWISE NOTED. ALL ERRORS OR CHANGES SHOULD BE IMMEDIATELY DISCUSSED WITH BUDGET, ARCHITECT, OWNER AND/OR CONTRACTOR.
- KITCHEN EQUIPMENT CONTRACTOR WILL NOT BE RESPONSIBLE TO FURNISH, OR CONNECT ANY ELECTRICAL COMPONENTS THAT DO NOT COME STANDARD WITH SUPPLIED EQUIPMENT, UNLESS OTHERWISE SPECIFIED IN CONTRACT, DRAWINGS OR SPECIFICATIONS. THIS INCLUDES BUT NOT LIMITED TO WIRE, WIRING SWITCHES, DISCONNECT SWITCHES, CONTROL PANELS, FUSE BOXES, FUSE FITTINGS, ETC. CONSULT BUDGET OR EQUIPMENT SPECIFICATION SHEETS WITH ANY QUESTIONS OR CONCERNS.
- VERIFY ANY TELEPHONE, P.O.S., PRINTER, COMPUTER, MONITOR, CREDIT CARD, FAX, NETWORK OR CONVENIENCE OUTLETS, ETC. WITH OWNER. VERIFY ALL EXHAUST HOOD SYSTEMS, FANS AND MAKE UP AIR UNITS, BREAKERS, SHUNT TRIP BREAKERS, CONTROLS, ETC. FOR HOOD AND FIRE SUPPRESSION SYSTEM. REMOTE REFRIGERATION EQUIPMENT, WALK-IN COOLER/FREEZER FINAL CONNECTIONS, INCLUDING BUT NOT LIMITED TO LIGHTS, DEFROST, ALARMS, REFRIGERATION SYSTEM COMPONENTS, ETC.
- ELECTRICAL CONTRACTOR SHALL PROVIDE ALL ROUGH-IN AND FINAL CONNECTIONS TO THE FOODSERVICE EQUIPMENT INCLUDING LABOR AND MATERIALS. ELECTRICAL CONTRACTOR IS TO FURNISH AND INSTALL THE FOLLOWING:
 - ALL JUNCTION/HANDY BOXES, METAL CONDUIT, WIRING AS REQUIRED, CONVENIENCE OUTLETS WITH COVERS, SWITCHES, CONNECTORS, CONTROLS AND ACCESSORIES THAT ARE NOT AN INTEGRAL PART OF THE FOODSERVICE EQUIPMENT AS REQUIRED TO MAKE FINAL CONNECTIONS TO THE FOODSERVICE EQUIPMENT FOR A COMPLETE AND FUNCTIONAL OPERATION MEETING ALL APPLICABLE CODES AND ORDINANCES. (RECOMMENDED CONVENIENCE OUTLET LOCATIONS ARE SHOWN AND MAY BE GROUPED FOR LOADING PURPOSES BASE ON NOMINAL LOAD OF 8 AMPS PER OUTLET.) SEE ARCHITECTURAL/ENGINEERING PLANS FOR ADDITIONAL ELECTRICAL REQUIREMENTS.
 - ALL PLECS AND CORDS AS REQUIRED FOR THE FOODSERVICE EQUIPMENT OR AS NOTED ON SCHEDULE. ALL CORDS SHALL BE N.E.M.A. RATED AND UL APPROVED FOR MANUFACTURED AND/OR FABRICATED EQUIPMENT.
 - DISCONNECTS AND OTHER DEVICES AS REQUIRED BY LOCAL, STATE, NATIONAL AND ESTABLISHED CODES. SHUNT TRIP BREAKERS OR DISCONNECTS FOR THE FIRE PROTECTION SHUT OFF OF ALL UNDER HOOD EQUIPMENT AND OTHER OUTLETS.
 - WALL SWITCHES FOR HOOD LIGHTS WIRED THROUGH THE EXHAUST AND SUPPLY FAN(S) STARTERS. ALL REQUIRED STARTERS AND/OR CONTROLS FOR KITCHEN EXHAUST AND SUPPLY FAN(S).
 - EXTERIOR SERVICE AS REQUIRED, INCLUDING DISCONNECTS FOR THE VENTILATION EQUIPMENT, COOLER, FREEZER, ICE MACHINE CONDENSING UNITS AND ANY OTHER REMOTE REFRIGERATION, AS WELL AS NEEDED CONTROL WIRING BETWEEN INTERNAL AND EXTERNAL COMPONENTS.
 - DEDICATED ISOLATED GROUND CIRCUITS AND INTERCONNECTED WIRING AND BOXES IN LOCATIONS AS NEEDED FOR REGISTER AND PRINTER POINT OF SALE SYSTEMS AS FURNISHED BY OWNER. CONFIRM SYSTEM REQUIREMENTS WITH SUPPLIER.
 - REFER TO ARCHITECTURAL/ENGINEERING DRAWINGS FOR CLOCKS, TIME CLOCKS, COMMUNICATION SYSTEMS, AND COMPUTERS, PRINTERS/FAX OR ANY OTHER MISC. ELECTRICAL REQUIREMENTS AND VERIFY ALL ELECTRICAL CHARACTERISTICS SHOWN ON ARCHITECTURAL AND ENGINEERING DRAWINGS.
 - WHEN APPLICABLE THE ELECTRICAL CONTRACTOR IS TO PROVIDE CONDUIT, AND WIRING, INSTALL ELECTRICAL COMPONENTS (AS PROVIDED BY BUDGET) AND INTER WIRE BETWEEN THE FOLLOWING: CONTROL PANELS TO WATER TYPE VENTILATORS AND EXHAUST/SUPPLY FANS PER MANUFACTURE INSTRUCTIONS. KITCHEN EXHAUST SYSTEM TO FIRE CONTROL SYSTEM AND SHUT-OFFS. DISPOSER CONTROL TO TIME DELAY/RELAY, MAGNETIC STARTER, MOTOR AND SOLENOID VALVE. LOW TEMPERATURE COMPRESSORS AND COOLER/FREEZER COILS FOR FAN MOTORS AND DEFROST ELEMENT POWER SOURCE.
- THE OWNER AND/OR FOOD PURVEYORS MAY PROVIDE SOME EQUIPMENT SHOWN. THE ELECTRICAL CONTRACTOR SHALL CONFIRM ALL EQUIPMENT SUPPLIED WITH THE KITCHEN EQUIPMENT CONTRACTOR, THE OWNER OR PURVEYORS. ELECTRICAL CONTRACTORS SHALL BE RESPONSIBLE FOR ANY SERVICE MODIFICATIONS REQUIRED.



A FOODSERVICE EQUIPMENT ELECTRICAL - PLAN
FS-4 SCALE 1/4"=1'-0"

Seal :

A Project For :



Client :

Santa Fe ISD
High School Serving
Line Renovation
16000 Hwy 6
Santa Fe, Tx.
77517

Revision :

0 01-19-20 DRAWN

1 01-27-20 REVISED

2 02-25-20 REVISED

3 02-27-20 REVISED

Date: 01/19/2020
Drawn by: K.D.K.
Checked by: J.W.

Sheet Title :

**FOODSERVICE
ELECTRICAL PLAN**

Sheet # :

FS-4