

ADDENDUM NO. 1

Date: April 26, 2019

PROJECT: Paving, Drainage, Illumination, and Appurtenances to serve
Santa Fe Junior High School and Cowan Administration Building
Parking Lots Rehabilitation
Santa Fe, Galveston County, Texas

BID DATE: May 2, 2019

FROM: Louis E. (Eddie) Kirst, P.E.
President
Kirst Kosmoski, Inc.
2400 Augusta, Suite 405
Houston, Texas 77057

To: **Prospective Bidders and Interested Parties**

This addendum forms a part of the bidding documents and will be incorporated into the Contract Documents, as applicable. Insofar as the original Contract Documents, Specifications, and Drawings are inconsistent, this Addendum shall govern. Please acknowledge receipt of this Addendum on both copies of the Bid Proposal form, Section 00300 submitted to the Santa Fe ISD.
FAILURE TO ACKNOWLEDGE RECEIPT OF ADDENDA ON THE BID PROPOSAL FORM MAY BE CAUSE FOR DISQUALIFICATION.

CONTRACT DOCUMENTS:

1. Delete Section 00300 – Bid Proposal in its entirety and replace with the attached.

CONSTRUCTION DRAWINGS:

1. Delete plan sheets 9 – 14 in their entirety and replace with the attached.

MISCELLANEOUS:

1. Pre-bid sign-in list attached,
2. Pre-bid meeting notes attached.

END OF ADDENDUM NO. 1



Eddie Kirst, P.E.
Pres.

Section 00300

BID PROPOSAL

Date: _____

Bid of _____, an individual proprietorship / a corporation organized and existing under the laws of the State of Texas / a partnership consisting of _____, for the construction of:

**Paving, Drainage, Illumination, and Appurtenances
to serve**

**SANTA FE JUNIOR HIGH SCHOOL AND COWAN ADMINISTRATION BUILDING
PARKING LOTS REHABILITATION,
Santa Fe, Galveston County, Texas**

(Submitted in Duplicate)

To: SANTA FE INDEPENDENT SCHOOL DISTRICT
4133 Warpath Ave.
Santa Fe, Texas, 77510

Attn.: Mr. Bob Atkins,
Director of Maintenance, Operations, & Construction

Pursuant to the Invitation to Bidders, and Instructions to Bidders, the undersigned Bidder hereby proposes to do all the work and furnish all necessary superintendence, labor, machinery, equipment, tools and materials, and whatever else may be necessary to complete all the work described in or reasonably inferable from the Contract Documents for the construction of the **Paving, Drainage, and Illumination** to serve Santa Fe Junior High School and Cowan Administration Building Parking Lots Rehabilitation with all related appurtenances, complete, tested, and operational, in accordance with the Plans, and Specifications prepared by the Engineer, Kirst Kosmoski, Inc., 2400 Augusta Drive, Ste. 405, Houston, Texas 77057, Mr. Eddie Kirst, P.E., under the District's inspection for the unit prices or applicable prices set forth on the attached bid sheet(s) which bears the undersigned's initials for identification. It is understood that, in the event any changes are ordered on any part of the Work, the applicable unit prices bid shall apply as additions to or deductions from the total prices for the parts of the Work so changed.

The Bid Security, if required under the Instructions to Bidders, is included with this Bid Proposal.

The Bidder agrees to submit to the Owner the Qualifications of Bidder, including the Financial Statement of Bidder, as required by the Instructions to Bidders.

The Bidder binds himself upon acceptance of his Bid Proposal to execute the Standard Form of Agreement and, if required, furnish a Performance Bond and a Payment Bond, each in the amount of one hundred percent (100%) of the total Contract Price, according to the forms included in the Contract Documents.

Bidder's Initial's: _____

The undersigned Bidder agrees to commence work within ten (10) days after the date of a written notice to commence work. It is understood that the Work is to be Substantially Complete within **sixty (60) days** after the date of the notice to commence work. Time for Substantial Completion shall begin on the date established by the notice to commence work. The Contractor will pay liquidated damages in the amount(s) specified in Document 00500 – Standard Form of Agreement in the event the Work is not Substantially Complete in this time limit.

Item No.	Bid Item Description	Unit	Approx. Quantity	Unit Price	Amount Bid
BASE BID: COWAN ADMIN. NORTH & SOUTH & JUNIOR HIGH SOUTH LOTS					
MOVE-IN & START-UP					
1.	Mobilization, Insurance, & Bonds	LS	1		
2.	Traffic Control and Regulation, Includ.: Signs and Barricades, in Accordance with MUTCD, Complete in Place	LS	1		
SUBTOTAL BASE BID MOVE-IN & START-UP:					
PAVING, ILLUMINATION, & DRAINAGE					
3.	Remove & Dispose Ex. Asphalt & Concrete Paving, Base, & Sidewalk; Includ. Saw Cuts as Needed, Complete in Place	SY	13,350		
4.	Lime for Subgrade (9% By Weight; 45#/SY)	Ton	304		
5.	Manipulation of Lime Into Subgrade (6" Min. Depth)	SY	13,499		
6.	Grading & Compaction of Treated Subgrade	SY	13,499		
7.	6" Reinforced Concrete Drive & Parking Pavement, Complete in Place	SY	7,360		
8.	7" Reinforced Concrete Bus Drive & Parking Pavement, Complete in Place	SY	5,650		
9.	8" Reinforced Concrete Dumpster Pad Pavement, Complete in Place	SY	250		
10.	Reinforced Concrete Paving Header, Complete in Place	LF	356		
11.	4.5" x 4' Wide Reinforced Concrete Sidewalk Pavement, Complete in Place	SY	121		

Bidder's Initial's: _____

Item No.	Bid Item Description	Unit	Approx. Quantity	Unit Price	Amount Bid
12.	Permanent Pavement Markings; Parking Spaces, Crosswalks , ADA Symbols, Directional Arrows, Bus Space Numbers (1 - 22), Complete in Place	LS	1		
13.	Wheel Stops; Including Anchors, Complete in Place	Ea	203		
14.	Steel Bollards, Complete in Place	Ea	4		
15.	Remove & Replace ADA Ramp @ Junior High South, Complete in Place	Ea	1		
16.	2" Sch 80 PVC Electrical Conduit w/ Lighting Conductors @ Admin. North Lot; Includ.: Excavation, Pipe, Fittings, Red Concrete Cover, Backfill, Complete in Place	LF	64		
17.	Electrical Pull Box Installed Over Existing Lighting Conduit @ Admin. North Lot; Includ.; Tying New Lighting Conductors Into Ex, Conductors, Complete in Place	Ea	1		
18.	2" Sch 80 PVC Electrical Conduit w/ Pull Tape for Future Use @ Admin. North Lot; Includ.: Excavation, Pipe, Fittings, Red Concrete Cover, Backfill, Complete in Place	LF	128		
19.	Remove & Dispose Ex. 12" & 18" Storm Sewer at Admin. North Lot & Junior high South Lot; Includ.: Inlets & Appurtenances, Complete In Place	LF	765		
20.	9" HDPE Profile Wall Storm Sewer Restrictor w/ 12' x 9" Reducer, All Depths; Includ.: Excavation, Fittings, Bedding, Backfill, & Testing	LF	4		
21.	12" HDPE Profile Wall Storm Sewer, All Depths; Includ.: Excavation, Fittings, Bedding, Backfill, & Testing	LF	313		

Bidder's Initial's: _____

Item No.	Bid Item Description	Unit	Approx. Quantity	Unit Price	Amount Bid
22.	18" HDPE Profile Wall Storm Sewer, All Depths; Incl.: Excavation, Fittings, Bedding, Backfill, & Testing	LF	751		
23.	Type "A" Inlet, Complete in Place	Ea	16		
24.	Control of Ground Water; Dewatering (Only as Directed by Engineer)	LF	475		
25.	Trench Safety System; All Size Pipe, All Depths	LF	1,068		
26.	ALLOWANCE to Field Locate, Adjust, Repair, Restore Existing Wet & Dry Utilities As Directed by Engineer.	LS	1	20,000.00	20,000.00
27.	Remove & Dispose Exist. ADA Parking Signs	Ea	11		
28.	New ADA Parking Signs, Complete in Place	Ea	13		
29.	New "NO BUSES" Signs, Complete in Place	Ea	2		
30.	Preserve Exist. Parking Signs in Place OR Remove & Reinstall	Ea	11		
31.	Storm Water Pollution Prevention Plan Compliance; Including but Not Limited to: Installation, Maintenance, & Removal Silt Fence, Inlet Protection Barriers, Stabilized Construction Entrances/Exits, etc., and Filing N.O.I. & N.O.T.	LS	1		
32.	Stabilized Construction Exit; Incl.: Installation, Maintenance, & Removal	Ea	3		
33.	Concrete Truck Washout; Incl.: Installation, Maintenance, & Removal, Complete in Place	Ea	1		
	SUBTOTAL BASE BID PAVING, ILLUMINATION, & DRAINAGE:				
	MISCELLANEOUS				
34.	Extra Cement Stabilized Sand (Only as Directed by Engineer)	CY	25		

Bidder's Initial's: _____

Item No.	Bid Item Description	Unit	Approx. Quantity	Unit Price	Amount Bid
35.	Extra Hand Excavation Near Existing Utilities/Structures (Only as Directed by Engineer)	CY	10		
36.	Control of Surface Water (Only as Directed by Engineer)	LS	1		
37.	ALLOWANCE for Owner's Contingency (Only as Directed by Owner)	LS	1	200,000.00	200,000.00
38.	ALLOWANCE for SFISD / City of Santa Fe Permitting/Inspection Fee	LS	1	3,600.00	3,600.00
	SUBTOTAL BASE BID MISCELLANEOUS:				
	SUBTOTAL BASE BID ITEMS:				
ALTERNATE #1: COWAN ADMIN. NORTH LOT ADDITION					
	PAVING, ILLUMINATION, & DRAINAGE				
39.	Insurance & Bonds	LS	1		
40.	Stripping 4" Depth for Paving; Includ.: Disposal	CY	90		
41.	Lime for Subgrade (9% By Weight; 45#/SY)	Ton	19		
42.	Manipulation of Lime Into Subgrade (6" Min. Depth)	SY	852		
43.	Grading & Compaction of Treated Subgrade	SY	852		
44.	6" Reinforced Concrete Drive & Parking Pavement, Complete in Place	SY	812		
45.	Reinforced Concrete Paving Header, Complete in Place	LF	70		
46.	Permanent Pavement Markings; Parking Spaces, Crosswalks , ADA Symbols, Directional Arrows, Complete in Place	LS	1		
47.	Wheel Stops; Including Anchors, Complete in Place	Ea	26		

Bidder's Initial's: _____

Item No.	Bid Item Description	Unit	Approx. Quantity	Unit Price	Amount Bid
48.	2" Sch 80 PVC Electrical Conduit w/ Lighting Conductors; Includ.: Excavation, Pipe, Fittings, Connection to Light Pole Foundations, Red Concrete Cover, Backfill, Complete in Place	LF	87		
49.	Light Pole w/ Single LED Light Head; Includ.: Base, Pole, Light Head, Conductors, Complete in Place	Ea	1		
50.	Light Pole w/ Double LED Light Head; Includ.: Base, Pole, Light Head, Conductors, Complete in Place	Ea	1		
51.	2" Sch 80 PVC Electrical Conduit w/ Pull Tape for Future Use ; Includ.: Excavation, Pipe, Fittings, Connection to Light Pole Foundations, Red Concrete Cover, Backfill, , Complete in Place	LF	87		
52.	12" HDPE Profile Wall Storm Sewer, All Depths; Includ.: Excavation, Fittings, Bedding, Backfill, & Testing	LF	84		
53.	Type "A" Inlet, Complete in Place	Ea	1		
54.	Trench Safety System; All Size Pipe, All Depths	LF	84		
55.	ALLOWANCE to Field Locate, Adjust, Repair, Restore Existing Wet & Dry Utilities As Directed by Engineer.	LS	1	1,000.00	1,000.00
56.	Storm Water Pollution Prevention Plan Compliance; Including but Not Limited to: Installation, Maintenance, & Removal Silt Fence, Inlet Protection Barriers, etc.	LS	1		
	SUBTOTAL ALT. #1 PAVING, ILLUMINATION, & DRAINAGE:				
	MISCELLANEOUS				
57.	Extra Cement Stabilized Sand (Only as Directed by Engineer)	CY	25		

Bidder's Initial's: _____

Item No.	Bid Item Description	Unit	Approx. Quantity	Unit Price	Amount Bid
58.	Extra Hand Excavation Near Existing Utilities/Structures (Only as Directed by Engineer)	CY	10		
59.	Control of Surface Water (Only as Directed by Engineer)	LS	1		
60.	ALLOWANCE for SFISD / City of Santa Fe Permitting/Inspection Fee	LS	1	500.00	500.00
	SUBTOTAL ALT. #1 MISCELLANEOUS:				
	SUBTOTAL ALT. #1 ITEMS:				
ALTERNATE #2: JUNIOR HIGH SOUTH LOT ADDITION					
	PAVING & DRAINAGE				
61.	Insurance & Bonds	LS	1		
62.	Stripping 4" Depth for Paving; Includ.: Disposal	CY	214		
63.	Remove & Dispose Existing Chain Link Fence & Posts Along Warpath Avenue	LF	55		
64.	Lime for Subgrade (9% By Weight; 45#/SY)	Ton	45		
65.	Manipulation of Lime Into Subgrade (6" Min. Depth)	SY	2,013		
66.	Grading & Compaction of Treated Subgrade	SY	2,013		
67.	6" Reinforced Concrete Drive & Parking Pavement, Complete in Place	SY	1,929		
68.	Reinforced Concrete Paving Header, Complete in Place	LF	53		
69.	Permanent Pavement Markings; Parking Spaces, Crosswalks , ADA Symbols, Directional Arrows, Complete in Place	LS	1		
70.	Wheel Stops; Including Anchors, Complete in Place	Ea	44		
71.	12" HDPE Profile Wall Storm Sewer, All Depths; Includ.: Excavation, Fittings, Bedding, Backfill, & Testing	LF	292		

Bidder's Initial's: _____

Item No.	Bid Item Description	Unit	Approx. Quantity	Unit Price	Amount Bid
72.	Type "A" Inlet, Complete in Place	Ea	4		
73.	Trench Safety System; All Size Pipe, All Depths	LF	292		
74.	ALLOWANCE to Field Locate, Adjust, Repair, Restore Existing Wet & Dry Utilities As Directed by Engineer.	LS	1	1000.00	1000.00
75.	New "DO NOT ENTER" Signs, Complete in Place	Ea	2		
76.	Storm Water Pollution Prevention Plan Compliance; Including but Not Limited to: Installation, Maintenance, & Removal Silt Fence, Inlet Protection Barriers, etc.	LS	1		
	SUBTOTAL ALT. #2 PAVING & DRAINAGE:				
	MISCELLANEOUS				
77.	Extra Cement Stabilized Sand (Only as Directed by Engineer)	CY	25		
78.	Extra Hand Excavation Near Existing Utilities/Structures (Only as Directed by Engineer)	CY	10		
79.	Control of Surface Water (Only as Directed by Engineer)	LS	1		
80.	ALLOWANCE for SFISD / City of Santa Fe Permitting/Inspection Fee	LS	1	800.00	800.00
	SUBTOTAL ALT. #2 MISCELLANEOUS:				
	SUBTOTAL ALT. #2 ITEMS:				
	TOTAL BID:				

Bidder's Initial's: _____

It is agreed that the Contract Price may be increased or decreased to cover work added, altered, or deleted by order of the Engineer, in accordance with the provisions of the General Conditions of Agreement.

The undersigned agrees that the amounts bid in this Bid Proposal will not be withdrawn or modified for sixty (60) days following date of Bid Proposal opening, or such longer period as may be agreed to in writing by the School District and Bidder.

It is understood that in the event the Successful Bidder fails to enter into the Standard Form of Agreement and/or, if required, furnish a Performance Bond and Payment Bond, each in the amount of one hundred (100) percent of the Contract Price within ten (10) days of the Notice of Award, the Successful Bidder will forfeit the Bid Security as provided in the Instructions to Bidders.

Unless otherwise expressly provided herein, all references to "day(s)" shall mean calendar day(s).

The following Addenda have been received. The modifications to the Bidding Documents noted therein have been considered and all costs thereto are included in the Bid Proposal prices.

Addendum No.: _____	Date: _____	Addendum No.: _____	Date: _____
Addendum No.: _____	Date: _____	Addendum No.: _____	Date: _____
Addendum No.: _____	Date: _____	Addendum No.: _____	Date: _____

Bidder hereby represents that the only person or parties interested in this offer as principals are those named above. Bidder has not directly or indirectly entered into any agreement, participated in any collusion, or otherwise taken any action in restraint of free competitive bidding.

Firm Name: _____

By: _____

Title: _____

Address: _____

Phone No: _____

ATTEST:

(Typed or Printed Name)

(Seal, if Bidder is a Corporation)

Signature

Date: _____

END OF SECTION

Bidder's Initial's: _____



- KEY NOTES:
- ☒ REMOVE & DISPOSE EXIST. ADA SIGNS (5)
 - ☒ PRESERVE IN PLACE, OR REMOVE & REINSTALL EXIST. SIGNS (2)

☒ REMOVE & DISPOSE EXIST. ADA SIGNS (5)

☐ PRESERVE IN PLACE, OR REMOVE & REINSTALL EXIST. SIGNS (2)

EXISTING TREE TO BE PROTECTED
CONTRACTOR TO PROTECT DURING ALL
PHASES OF CONSTRUCTION



(IN FEET)
inch = 20 ft.

ONE-CALL NOTIFICATION SYSTEM
CALL BEFORE YOU DIG!!!
(713)223-4567 (IN HOUSTON)
NEW STATEWIDE NUMBER OUTSIDE HOUSTON)

A circular professional engineer seal for the State of Texas. The outer ring contains the text "STATE OF TEXAS" at the top and "REGISTERED PROFESSIONAL ENGINEER" at the bottom, separated by dots. In the center, the name "Louis E. Kirst" is written in a cursive script, with a five-pointed star above the letter "i". Below the name, the license number "65540" is printed in a sans-serif font.

THE SEAL APPEARING ON THE
ORIGINAL OF THIS DOCUMENT
WAS AUTHORIZED BY
LOUISE E. KIRST, P.E.,
No. 65540 ON 04/08/19.
ALTERATIONS OF A SEALED
DOCUMENT WITHOUT PROPER
NOTIFICATION OF THE
RESPONSIBLE ENGINEER IS A
VIOLATION OF THE TEXAS
ENGINEERING PRACTICES ACT.

KKI KIRST KOSMOSKI, INC.
Civil/Consulting Engineers (F-7309)
 2400 Augusta Dr., Ste. 405; Hou., Tx. 77057
 Ph: 832-242-7200; Fax: 832-242-7205



SANTA FE JUNIOR HIGH SCHOOL
and
COWAN ADMINISTRATION BUILDING
PARKING LOTS REHABILITATION

4132 & 4133 WARPETH
SANTA FE, TEXAS 77510

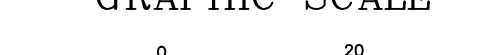
JUNIOR HIGH SCHOOL SOUTH LOT

DEMOLITION PLAN



SUMMARY OF PROPOSED PARKING SPACES		
TYPE OF SPACE	SIZE	NUMBER OF SPACES
REGULAR SPACE	9'X18'	92
REGULAR SPACE 45°	9'X28'	44
HANDICAPPED SPACE	9'X20'	5
BUS SPACE	14'X47'	22
TOTAL SPACES		163

GRAPHIC SCALE



(IN FEET)
1 inch = 20 ft.

ONE-CALL NOTIFICATION SYSTEM
CALL BEFORE YOU DIG!!!
(713)223-4567 (IN HOUSTON)
(NEW STATEWIDE NUMBER OUTSIDE HOUSTON)



TEMPORARY BENCHMARK C:

SQUARE CUT ON NORTH SIDE OF
CONCRETE PARKING LOT APPROXIMATELY
426 FEET EAST OF THE INTERSECTION OF
WARPATH AVENUE AND CONCRETE DRIVE
PAST 7th STREET.(EXACT LOCATION SHOWN
ON SURVEY)

ELEV.: 27.51


N.A.V.D. 1988,

TEMPORARY BENCHMARK G:

SQUARE CUT ON NORTH SIDE CONCRETE
PARKING LOT LOCATED ON THE WEST SIDE
OF WARPATH AVENUE APPROXIMATELY 662
FEET SOUTH OF THE INTERSECTION OF
WARPATH AVENUE AND 7th STREET.

ELEV.: 27.71

N.A.V.D. 1988,



THE SEAL APPEARING ON THE ORIGINAL OF THIS DOCUMENT WAS AUTHORIZED BY LOUISE E. KIRST, P.E., No. 65540 ON 04/08/19. ALTERATIONS OF A SEALED DOCUMENT WITHOUT PROPER NOTIFICATION OF THE RESPONSIBLE ENGINEER IS A VIOLATION OF THE TEXAS ENGINEERING PRACTICES ACT.

K K I KIRST KOSMOSKI, INC.
Civil/Consulting Engineers (F-7309)
 2400 Augusta Dr., Ste. 405; Hou., Tx. 77057
 Ph: 832-242-7200; Fax: 832-242-7205



SANTA FE JUNIOR HIGH SCHOOL
and
COWAN ADMINISTRATION BUILDING
PARKING LOTS REHABILITATION

4132 & 4133 WARPATH
SANTA FE, TEXAS 77510

JUNIOR HIGH SCHOOL SOUTH LOT

DIMENSION PLAN

Design By: LEK	KKI JOB NUMBER: P0279-003-400
Date: 03/20/19	
Dwn By: JAG	
Chkd By: MRK	
SCALE -- FULL SIZE: VERT: 1"=20'-0" HORIZ:	FILE NO:
SCALE -- HALF SIZE: VERT: HORIZ:	SHEET NO.: 10 OF 22

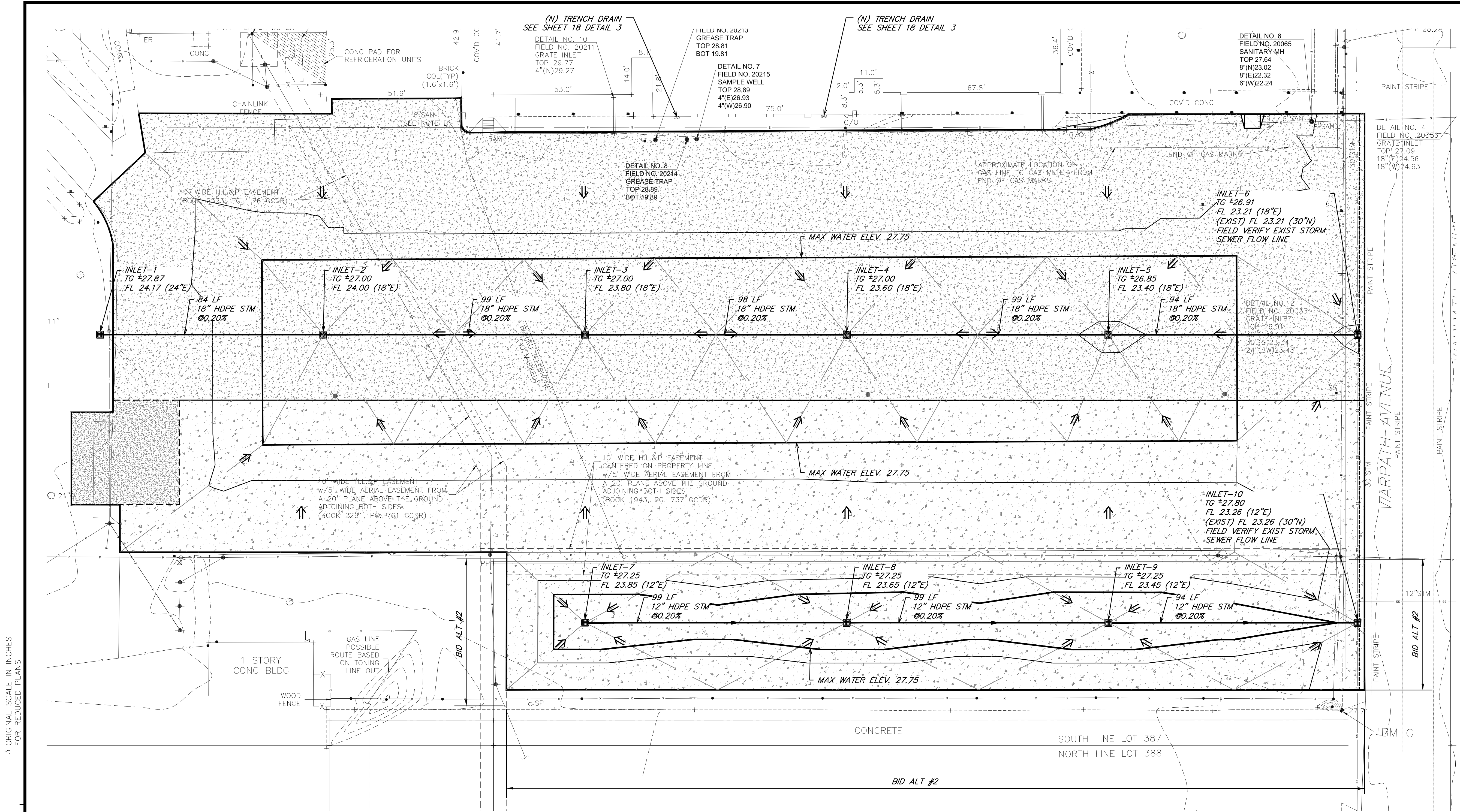


-  TYP A INLET

ONE-CALL NOTIFICATION SYSTEM
CALL BEFORE YOU DIG!!!
(713)223-4567 (IN HOUSTON)
(NEW STATEWIDE NUMBER OUTSIDE HOUSTON)



Design By: LEK	KKI JOB NUMBER:
Date: 03/20/19	P0279-003-400
Dwn By: JAG	
Chkd By: MRK	
SCALE — FULL SIZE: VERT: HORIZ: 1"=20'-0"	FILE NO:
SCALE — HALF SIZE: VERT: HORIZ:	SHEET NO.: 12 OF 22



3 ORIGINAL SCALE IN INCHES
FOR REDUCED PLANS

2

1

0

DRAINAGE PLAN

SCALE: 1"=20'

- NOTES:
1. MAINTAIN ADEQUATE DRAINAGE AT ALL TIMES DURING CONSTRUCTION.

LEGEND

- PROPOSED 6" CONCRETE PWT ON 6" STABILIZED SUBGRADE
- PROPOSED 7" CONCRETE PWT ON 6" STABILIZED SUBGRADE
- PROPOSED 8" CONCRETE PWT ON 6" STABILIZED SUBGRADE
- TYP A INLET
- DRAINAGE AREA BOUNDARY
- EXTREME EVENT FLOW PATH
- PROPOSED STORM SLOPE
- PROPOSED PAVING OR FINISHED GRADE SLOPE

GRAPHIC SCALE

(IN FEET)

1 inch = 20 ft.

ONE-CALL NOTIFICATION SYSTEM

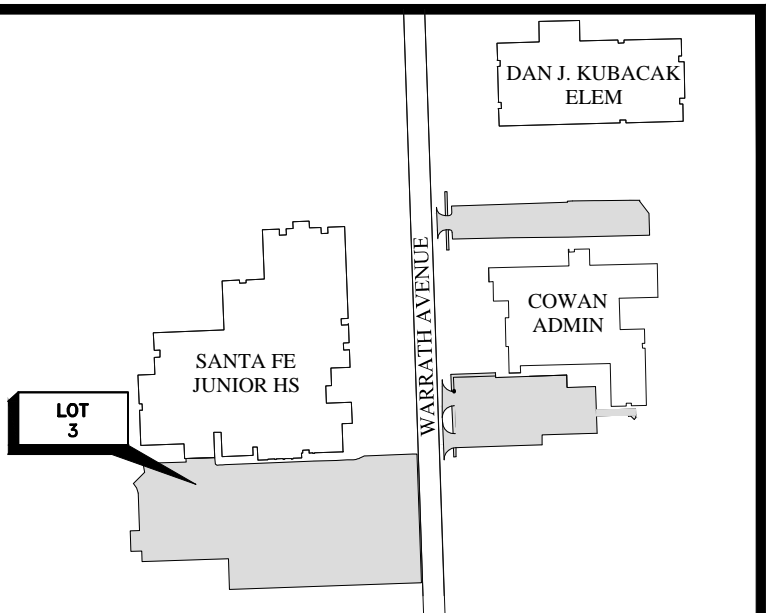
CALL BEFORE YOU DIG!!!

(713)223-4567 (IN HOUSTON)

(NEW STATEWIDE NUMBER OUTSIDE HOUSTON)

TEXAS 811

Know what's below. Call before you dig.



CONTROL BENCHMARK:

HGCS 59 BEING A STAINLESS STEEL ROD IN SLEEVE, WITH A LOGO CAP STAMPED "HGCS 59 1986" LOCATED AT THE BANK OF SANTA FE WHICH IS ALONG THE NORTH SIDE STATE HIGHWAY 6, APPROXIMATELY 0.1 MILE NORTHWEST FROM THE INTERSECTION OF STATE HIGHWAY 6 AND F.M. 646.

ELEV. = 22.60 N.A.V.D. 1988,

TEMPORARY BENCHMARK C:

SQUARE CUT ON NORTH SIDE OF CONCRETE PARKING LOT APPROXIMATELY 426 FEET EAST OF THE INTERSECTION OF WARPATH AVENUE AND CONCRETE DRIVE PAST 7th STREET.(EXACT LOCATION SHOWN ON SURVEY)

ELEV.: 27.51 N.A.V.D. 1988,

TEMPORARY BENCHMARK G:

SQUARE CUT ON NORTH SIDE CONCRETE PARKING LOT LOCATED ON THE WEST SIDE OF WARPATH AVENUE APPROXIMATELY 662 FEET SOUTH OF THE INTERSECTION OF WARPATH AVENUE AND 7th STREET.

ELEV.: 27.71 N.A.V.D. 1988,

1	04/26/19	DELETED TRENCH DRAINS & ADDED BID ALT # 2 NOTE	LEK
No.	Date	Revisions	App.

THE SEAL APPEARING ON THE ORIGINAL OF THIS DOCUMENT WAS AUTHORIZED BY LOUISE E. KIRST, P.E., No. 65540 ON 04/08/19. ALTERATIONS OF A SEALED DOCUMENT WITHOUT PROPER NOTIFICATION OF THE RESPONSIBLE ENGINEER IS A VIOLATION OF THE TEXAS ENGINEERING PRACTICES ACT.

KIRST KOSMOSKI, INC.

Civil Consulting Engineers (F-7309)

2400 Augusta Dr., Ste. 405, Hou., Tx. 77057

Ph: 832-242-7200; Fax: 832-242-7205

SANTA FE JUNIOR HIGH SCHOOL and COWAN ADMINISTRATION BUILDING PARKING LOTS REHABILITATION

4132 & 4133 WARPATH
SANTA FE, TEXAS 77510

JUNIOR HIGH SCHOOL SOUTH LOT

DRAINAGE PLAN

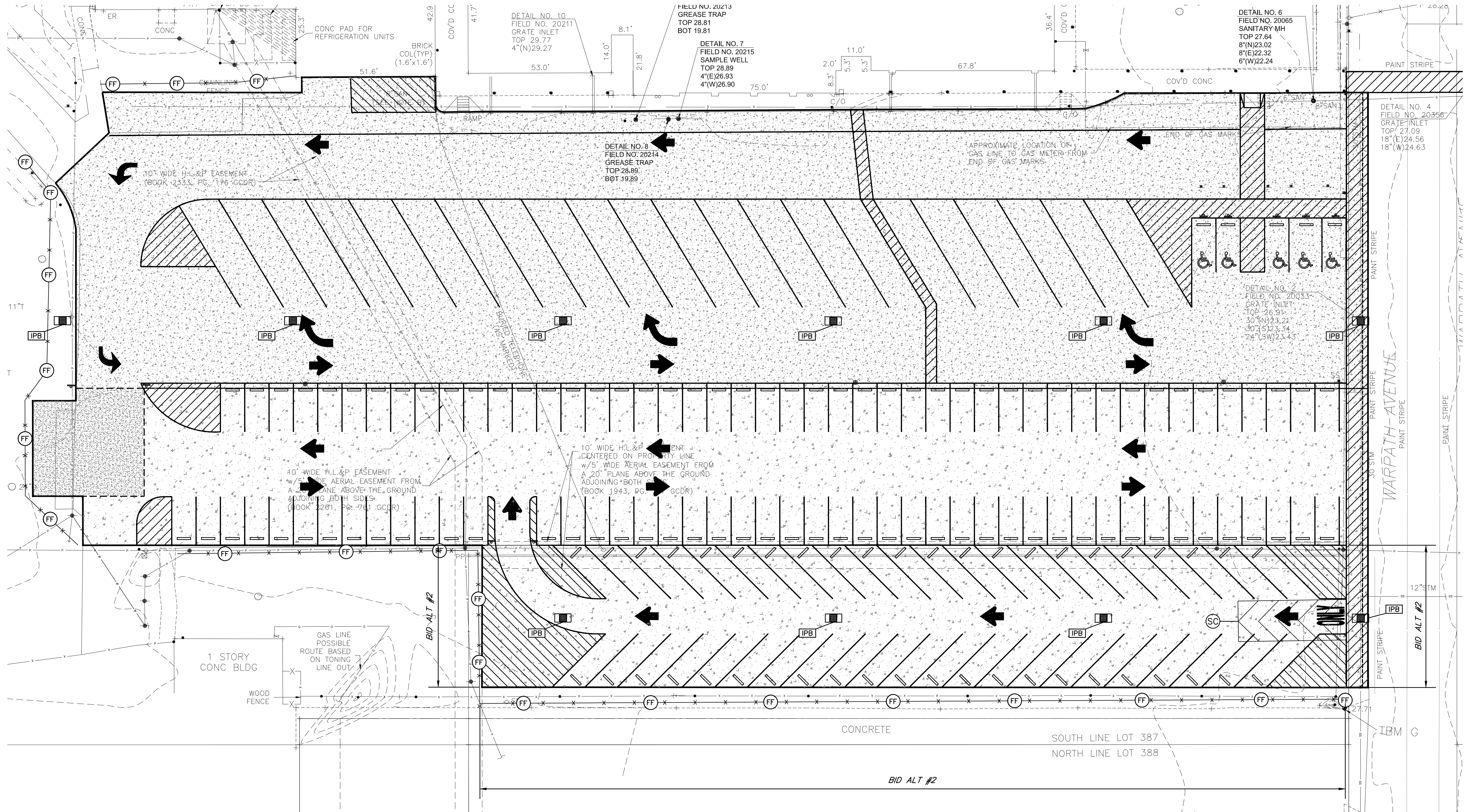
Design By: LEK	KKI JOB NUMBER: P0279-003-400
Date: 03/20/19	
Dwn By: JAG	
Chkd By: MRK	
SCALE - FULL SIZE: 1"=20'-0"	FILE NO:
VERT: 1"=20'-0"	SHEET NO.: 13 OF 22
SCALE - HALF SIZE:	
VERT:	
HORIZ:	

3 ORIGINAL SCALE IN INCHES
FOR REDUCED PLANS

2

1

0



STORM WATER POLLUTION PREVENTION PLAN

SCALE: 1"=20'



STORM SEWER AND CULVERTS:

1. MAINTAIN ADEQUATE DRAINAGE AT ALL TIMES DURING CONSTRUCTION.

LEGEND

- (SC) STABILIZED CONSTRUCTION EXIT
- (IPB) INLET PROTECTION BARRIER
- (FF) FILTER FABRIC FENCE

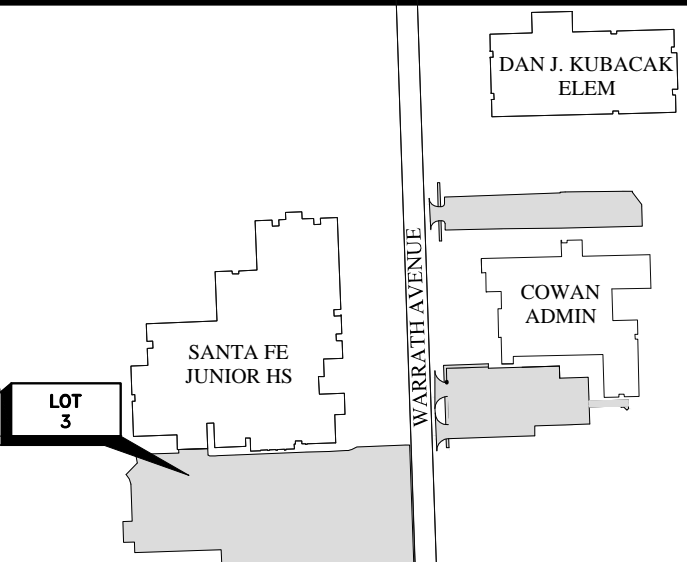
GRAPHIC SCALE



(IN FEET)

1 inch = 20 ft.

ONE-CALL NOTIFICATION SYSTEM
CALL BEFORE YOU DIG!!!
(713)223-4567 (IN HOUSTON)
(NEW STATENECE NUMBER OUTSIDE HOUSTON)



KEY MAP

CONTROL BENCHMARK:

HGCS 59 BEING A STAINLESS STEEL ROD IN SLEEVE, WITH A LOGO CAP STAMPED "HGCS 59 1988" LOCATED AT THE BANK OF SANTA FE WHICH IS ALONG THE NORTH SIDE STATE HIGHWAY 6, APPROXIMATELY 0.1 MILE NORTHWEST FROM THE INTERSECTION OF STATE HIGHWAY 6 AND F.M. 646.

ELEV. = 22.60

N.A.V.D. 1988,

TEMPORARY BENCHMARK C:

SQUARE CUT ON NORTH SIDE OF CONCRETE PARKING LOT APPROXIMATELY 426 FEET EAST OF THE INTERSECTION OF WARPATH AVENUE AND CONCRETE DRIVE PAST 7th STREET.(EXACT LOCATION SHOWN ON SURVEY)

ELEV.: 27.51

N.A.V.D. 1988,

TEMPORARY BENCHMARK G:

SQUARE CUT ON NORTH SIDE CONCRETE PARKING LOT LOCATED ON THE WEST SIDE OF WARPATH AVENUE APPROXIMATELY 662 FEET SOUTH OF THE INTERSECTION OF WARPATH AVENUE AND 7th STREET.

ELEV.: 27.71

N.A.V.D. 1988,

1 04/26/19 DELETED TRENCH DRAINS & ADDED BID ALT #2 NOTE LEK

No. Date Revisions App.



THE SEAL APPEARING ON THE ORIGINAL OF THIS DOCUMENT WAS AUTHORIZED BY LOUISE E. KIRST, P.E., No. 65540 ON 04/08/19. ALTERATIONS OF A SEALED DOCUMENT WITHOUT PROPER NOTIFICATION OF THE RESPONSIBLE ENGINEER IS A VIOLATION OF THE TEXAS ENGINEERING PRACTICES ACT.

KKI KIRST KOSMOSKI, INC.
Civil/Consulting Engineers (F-7309)
2400 Augusta Dr., Ste. 405, Hou., Tx. 77057
Ph: 832-242-7200; Fax: 832-242-7205



SANTA FE JUNIOR HIGH SCHOOL
and
COWAN ADMINISTRATION BUILDING
PARKING LOTS REHABILITATION

4132 & 4133 WARPATH
SANTA FE, TEXAS 77510

JUNIOR HIGH SCHOOL SOUTH LOT

STORM WATER POLLUTION PREVENTION PLAN

Design By: LEK	KKI JOB NUMBER: P0279-003-400
Date: 03/20/19	
Dwn By: JAG	
Chkd By: MRK	
SCALE - FULL SIZE: 1"=20'-0"	FILE NO:
SCALE - HALF SIZE:	SHEET NO.: 14 OF 22
VERT: HORIZ:	

**Paving, Drainage, Illumination, and Appurtenances
to serve**

**SANTA FE JUNIOR HIGH SCHOOL AND COWAN ADMINISTRATION BUILDING PARKING
LOTS REHABILITATION,
Santa Fe, Galveston County, Texas**

KKI Project No.: p0279-003-400

BIDS DUE: May 2, 2019 – 10:00 AMLOCATION: 4133 Warpath Ave., Santa Fe, Tx.PRE-BID: April 25, 2019 – 10:00 AMLOCATION: 4135 Warpath Ave., Santa Fe, Tx.

ESTIMATE: _____

PLAN FEE: \$ 0.00 (Plans Available at CivCastUSA.com)

	<u>Company Name & Address</u>	<u>Representative / Contact Name</u>	<u>Ph. #, Fax #, E-mail</u>	
1.	Kirst Kosmoski, Inc. 2400 Augusta Dr., Ste. 405 Hou., Tx. 77057	Eddie Kirst	Ph.: 832-242-7200 Fax: 832-242-7205 E-mail: eddie@kirstkosmoski.com	
2.	Bob Atkins SANTA FE ISD	Bob Atkins	Ph.: 409 925 9200 Fax: E-mail: bob@atkins@sfisd.org	
3.	Chris Wheeler SFISD		Ph.: 409 925 9200 Fax: E-mail: Chris.Wheeler@SFISD.ORG	
4.	TANDEN SERVICES 4425 FM 2351 SUITE 505 FRIENDS WOOD	SEPHEN YORAN	Ph.: Fax: E-mail: TANDEN@TANDENSOCIAL.COM	
5.	J.T. VAUGHN CONSTRUCTION 10355 WESTPARK DR. HOUSTON, TX 77042	SPENCER MODAWELL JOHN GAMBLE	Ph.: 713-984-4325 Fax: E-mail: SMODAWELL@VAUGHNCONSTRUCTION.COM	
6.	Millis Equipment Rents	Hugo Sanchez	Ph.: Fax: E-mail: leslee@millis.com	
7.	Felix Torano Momentum Concrete Service	Felix Torano	Ph.: 832-367-6288 Fax: E-mail: ftorano@momentumconcrete.com	
8.	JOHN LIVERY STEWART BUILDERS	JOHN LIVERY DOUG OUTLER	Ph.: Fax: E-mail: STEWARTBUILDERS70.COM	
9.	Harper Brothers Const	Marvin Webster Marlon Holzbach	Ph.: 713 893 4593 Fax: E-mail: bid5@harperbro.com	
10.	Conrad Construction 13408 Emmett Houston, TX	Dale Beckham Brian Conrad	Ph.: 713-937-3081 Fax: E-mail: brianwconrad@hotmail.com	
11.			Ph.: Fax: E-mail:	
12.			Ph.: Fax: E-mail:	
13.			Ph.: Fax: E-mail:	

MEETING NOTES

Page 1 of 2

PROJECT:	SF Junior High & Cowan Paving Rehab	KKI JOB NO:	p0279-003-400
CLIENT:	Santa Fe ISD	DATE OF MEETING:	04/25/19
CLIENT JOB NO:		DATE PREPARED:	04/25/19
LOCATION:	4133 Warpath Ave., Santa Fe, Tx.	PREPARED BY:	LEK
PURPOSE OF MEETING:	Pre-bid		
ATTENDED BY:	see attached sign-in list	cc:	
THE FOLOWING IS OUR UNDERSTANDING OF THE ITEMS DISCUSSED AT THIS MEETING. PLEASE NOTIFY US IF YOU HAVE QUESTIONS OR COMMENTS ABOUT THIS INFORMATION.			

ITEM	
1.	Introductions & Sign-In
2.	Vendor Application Packet will be provided to the selected Contractor following review.
3.	Project review / description – Base Bid Areas: <ul style="list-style-type: none"> - R&R existing asphalt with concrete, - Match perimeter grades, slope to new inlets. - Site protection & restoration (tree & root protection, backdressing edge, & seeding) incidental, - Use caution and coordinate regularly with ISD to minimize damage to existing utility lines.
4.	Project review / description – Bid Alternate Areas: <ul style="list-style-type: none"> - R&R existing grass with concrete, - Hold called perimeter grades, slope to new inlets. - Site protection & restoration (tree & root protection, backdressing edge, & seeding) incidental, - Use caution and coordinate regularly with ISD to minimize damage to existing utility lines, - Bid Alt. #2 area is the 56' x 328' area labeled "GRASS" on plan sheet 9, immediately south of the Junior High School south lot.
5.	Notify the City at least 48 hours before pouring: 409-925-6412, Mr. Marty Haley, <u>especially for work to be done Friday afternoon and weekends.</u>
6.	Addendum #1 will be issued no later than Monday April 29 th and will contain: <ul style="list-style-type: none"> - A complete new bid form - Quantities for, 12" HDPE, have changed, - Some bid items have been moved from "Miscellaneous" to "Base Bid", - Additional items as may become necessary.
7.	Engineer's Opinion of Cost: \$1.5M
8.	Security is a priority: <ul style="list-style-type: none"> - All workers will need ID, photo ID preferred, - Contractor must provide written certification of background check of all employees on the project, - Building access if required will need to be coordinated through the maintenance department. <p>Contractor is responsible for site safety.</p>
9.	Only written field change directives from Mr. Bob Atkins or the engineer are valid.
10.	Revised drawing sheets 9 – 14 indicating the area for Bid Alt. #2 will be included in Addendum #1.
11.	Schedule: <ul style="list-style-type: none"> - Start June 10th, - Staging materials and possible early start (June 8th) to be determined, - Substantial completion by August 5th.

MEETING NOTES

Page 2 of 2

PROJECT:	SF Junior High & Cowan Paving Rehab	KKI JOB NO:	p0279-003-400
CLIENT:	Santa Fe ISD	DATE OF MEETING:	04/25/19
12.	Cut off for questions is close of business Monday April 29 th .		
13.	Fence Removal: <ul style="list-style-type: none"> - 55 LF of existing chain link fence along Warpath Ave. is to be removed. - Fencing between Bid Alt. #2 area and HEB to remain. 		
14.	Construction Fencing: <ul style="list-style-type: none"> - Security fencing is not required, - Safety fencing (orange Tensar type) is required. 		
15.	City of Pearland technical specifications as noted in the project manual table of contents will be used for the project. Substitute SFISD or City of Santa Fe as appropriate.		
16.			
17.			
18.			
19.			
20.			