

# SHARING OUR EXPERIENCE LESSONS FROM 25 YEARS



EAGLE ROCK SCHOOL  
AND PROFESSIONAL DEVELOPMENT CENTER



**EAGLE ROCK** is marking its 25th anniversary as a residential high school set in the Rocky Mountains near Estes Park, Colorado and a professional development center that supports public schools across the U.S.

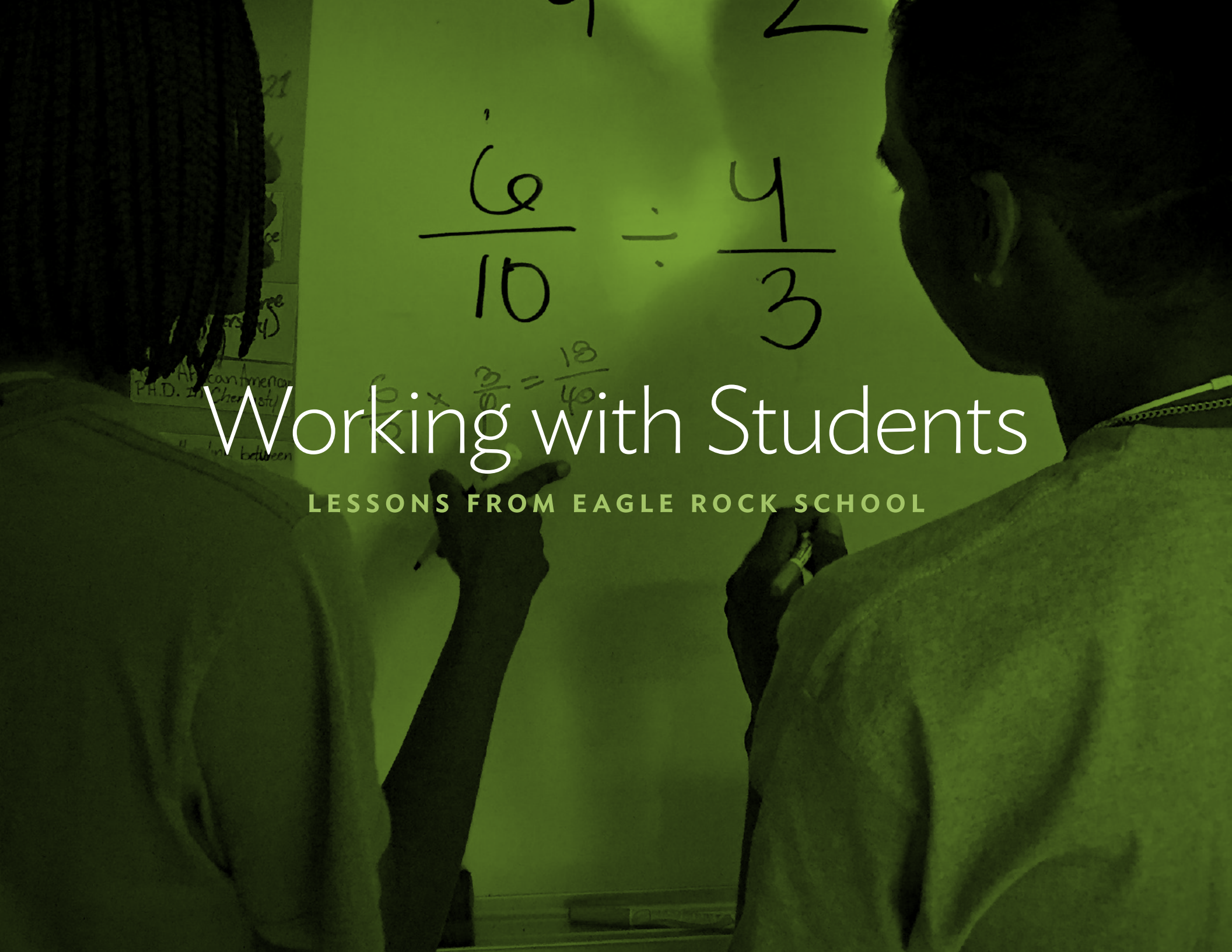
For a quarter century, the school has served young people who are not thriving in their current situations, yet who remain interested in taking control of their lives and learning.

A values-driven school, Eagle Rock implements effective and engaging practices to foster each student's unique potential, and, through its Professional Development Center, facilitates asset-based improvement processes in under-funded public schools across the U.S.

## THE LESSONS



*The following are essential lessons we've learned during our quarter century of engagement with students on campus, and through supporting public schools around the country.*

A photograph of two students, a woman on the left and a man on the right, working on a whiteboard. The woman has braided hair and is wearing a light-colored shirt. The man is wearing a light-colored shirt. They are both holding markers and pointing at the whiteboard. The whiteboard has several math problems written on it. The most prominent one is a division problem:  $\frac{6}{10} \div \frac{4}{3}$ . Below it, there is another problem:  $\frac{6}{10} \times \frac{3}{4} = \frac{18}{40}$ . To the left of these problems, there is a list of names and titles, including "African American", "P.H.D. in Chemistry", and "between".
$$\frac{6}{10} \div \frac{4}{3}$$

# Working with Students

LESSONS FROM EAGLE ROCK SCHOOL



# Working with Students

## LESSONS FROM EAGLE ROCK SCHOOL

### SHARED CULTURE

*The development of individual character and values arises from within a sustainable and shared school culture.*

This forms the foundation for personal growth, academic success and personal choices that will support healthy, successful lives.

### ENGAGE THE DISENGAGED

*Personal development is lifelong.*

Teenagers, in particular, can make significant changes in their lives to realize their potential with the right opportunities, challenges and support. They also will make mistakes and when they do, they can learn from them with the proper support, and use their same strengths to repair the harm. Their past does not have to be their future.





## ASK MORE OF YOUR STUDENTS

*Challenge students about the way they think, act and work.*

Balancing appropriate levels of challenge and support will connect with the natural motivation of young people to share their experience and knowledge with others, resulting in leadership and responsibility. Students possess tremendous insight, energy, and resilience that can be applied to solving complex problems.

## THE ART OF CIVIC ENGAGEMENT

*Education is more than preparation for college or work.*

It is an opportunity to impart the importance of service and responsibility to others, and develop young people committed to themselves, their communities and the world. Helping young people learn about issues, develop informed opinions and communicate them effectively supports deeper learning and positive civic engagement.

## STUDENTS TAKE OWNERSHIP OF LEARNING & DEVELOPMENT

*When young people discover and connect with their own reasons for learning, they become effective advocates for their own development.*

Education that connects with student strengths and interests is engaging and leads to a lifelong commitment to learning.



## HOLISTIC APPROACH TO GROWTH

*Education should not be limited to academic lessons.*

Intellectual growth is advanced through physical, mental, spiritual and social growth, instilling character and confidence that are the foundation for future life choices. The experience of wilderness/outdoor education is a powerful avenue for this holistic, personal transformation.

## DEVELOP TRUSTING RELATIONSHIPS

*To experience personal growth, young people must feel accepted before they can be encouraged to change and learn.*

Strong, trusting relationships with adults help support students going through difficult times. Trust and acceptance help young people take on the challenge to learn, to try new things and to meet higher expectations for success.

## EMBRACE DIFFERENCES IN PEOPLE AND IN THOUGHT

*Cross-cultural understanding is a critical requirement in an increasingly diverse world.*

The success of young people, as well as the success of their schools, their communities and their world, is based on our ability to teach them to embrace people of different races, ethnic backgrounds, religions, genders and sexual identities. Perhaps most importantly, we teach young people to consider a range of ideas that may be different than their own.



## SENSE OF COMMUNITY

*The importance of shared values of the school community is critical to learning and growth.*

The establishment of a strong sense of community within the school through the combined strengths of students and teachers will lead to an environment that is safe and conducive to learning for all.

## THE VOICE OF THE STUDENT HAS VALUE IN TEACHER DEVELOPMENT

*Everyone is a learner.*

By maintaining a values-driven culture, the voice and leadership of students can be used to advance professional development and position teachers as lifelong learners who implement progressive education practices with the next generation.



*What do these lessons teach us? At Eagle Rock, we imagine a day when all high school students in the United States are deeply and meaningfully engaged in their own education.*

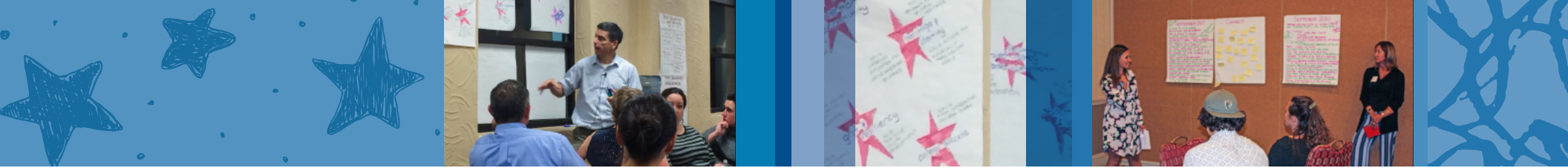




# Working with Schools

LESSONS FROM THE PROFESSIONAL DEVELOPMENT CENTER





# Working with Schools

## LESSONS FROM THE PROFESSIONAL DEVELOPMENT CENTER

### CONTEXT IS EVERYTHING

*For real improvements to stick, solutions must be rooted in a school's context and grow out of existing assets.*

Every school is different, every environment unique. Creating solutions to challenging dilemmas must reflect those differences and the solutions that work best, grow out of the school's context.

### LEARNING FROM THE INSIDE OUT

*Job embedded or work-based learning is how adults learn best.*

Taking new learning and applying it to the jobs they are already doing creates tremendous synergy. We don't add new things to very busy professionals. We help educators do the things they are already doing better or easier.



## FOCUS MATTERS

*Being clear about what we will and won't do in the area of supporting schools keeps us effective in our zone of competence.*

We're a small team with an outsized impact due to our focus on supporting the implementation stage of change in schools.

## ASSET-BASED APPROACHES STICK

*Drawing on theory and technique from asset-based community development, positive deviance, the strengths-based movement, positive psychology, and appreciative inquiry is empowering for schools and leads to deep, meaningful and effective change.*

## INSPIRATION IS AN ONGOING PURSUIT

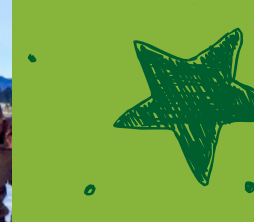
*Educators who visit Eagle Rock School recognize the power of possibilities and leave truly inspired.*

However, to sustain change, these educators need follow-up support in their own environment in order to develop lasting improvements.



# Eagle Rock School Values

8 THEMES + 5 EXPECTATIONS = 10 COMMITMENTS



# Values

8

+

5

=

10

## THEMES

### *Individual Integrity*

- Intellectual Discipline
- Physical Fitness
- Spiritual Development
- Aesthetic Expression

### *Citizenship*

- Service to Others
- Cross-cultural Understanding
- Democratic Governance
- Environmental Stewardship

## EXPECTATIONS

- Developing an expanding knowledge base
- Communicating effectively
- Creating and making healthy life choices
- Participating as an engaged global citizen
- Providing leadership for justice

## COMMITMENTS

- Live in respectful harmony with people of all races, cultures, religions, genders and sexual identities, some of whom will have disabilities or different learning styles
- Develop my mind through intellectual discipline, my body through physical fitness, and my spirit through thoughtful contemplation
- Learn how to communicate more effectively in speech and writing
- Serve the Eagle Rock and other communities through the contribution of my labors
- Become a steward of the planet
- Make personal choices that will support healthy living
- Find, nurture and develop the artist within
- Increase my capacity to exercise leadership for justice
- Practice the arts of citizenship and democratic living
- Devise an enduring moral and ethical code





EAGLE ROCK SCHOOL  
AND PROFESSIONAL DEVELOPMENT CENTER



Eagle Rock School and Professional Development Center  
is a corporate social responsibility initiative of American Honda Motor Co., Inc.