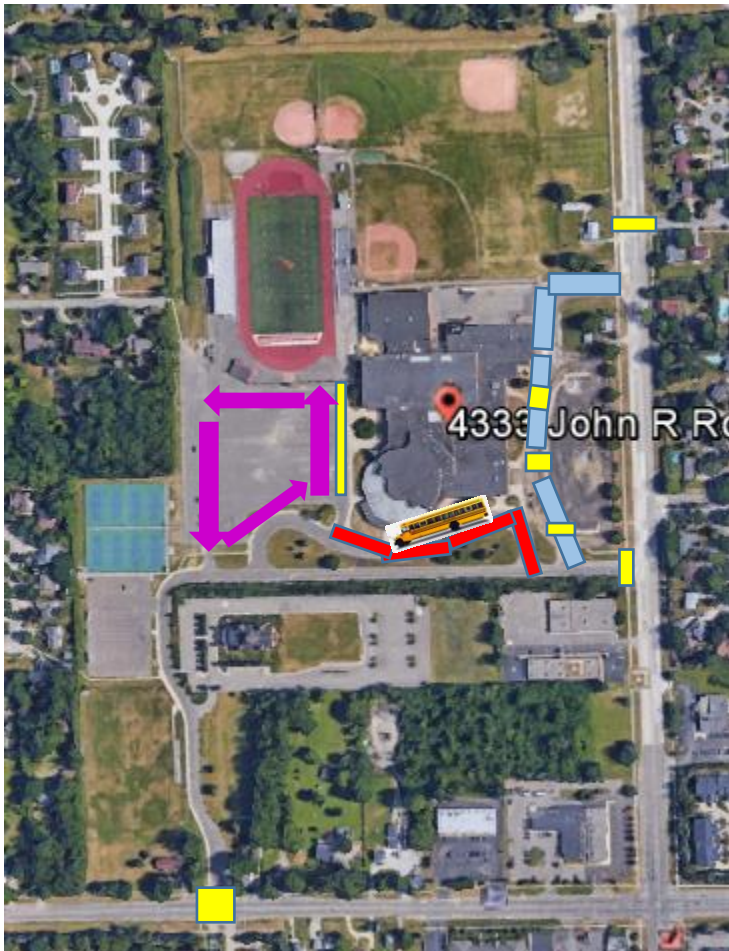




## Athens Driving Expectations:

- The **speed limit is 15 mph** when driving on school property.
  - **We prefer students to be dropped-off via the front Main Entrance Loop.** When leaving the front loop, parents may not pass other traffic in order to enter the faculty lot. The access to the faculty lot is a two-way road. Please follow the traffic signage and respect the three-way stop.
  - **Students should never be dropped-off in the front faculty lot.** Picking students up after-school in the faculty lot is ok.
  - While we do not prefer it, students may be dropped-off in the back student parking lot, but please **use the west entrance access and do not pass cars**, for you are crossing into traffic going the opposite direction and making it more dangerous for students who are walking from the parking lot to the school.
  - **No car should enter the bus loop when buses are present.** To help drivers remember this, **we will place neon green reflector traffic cones in the right bus lane from 6:55 a.m. – 7:10 a.m.** This will close the bus loop to cars during this time. This may also create some delays for cars will be forced to refrain from entering the bus loop; cars will also be forced to slow down.
- We recommend all drivers leave 5 minutes earlier than normal anticipated in order to comply with our safety needs.**
- **Please be extra vigilant with walkers.** Whether crossing at Wattles, John R, or on school property pedestrians have the right-of-way.
  - **Take your time. We would rather a student be late than to rush and have an issue. When significant weather occurs, we do not mark students tardy to first hour.**



### Key:



Watch for pedestrians



Preferred Student Drop



**No cars** may enter the bus loop when buses are present, which is typically from 6:55 – 7:10 a.m.



Do not pass or drive south when at the back school entrance dropping off students. Enter driving north and take the longer route around the perimeter of the parking lot prior to exiting.



Do not exceed the speed limit