



Welcome to Kindergarten!



Hillcrest School
2023 - 2024



By a Show of hands...

How many families are sending their child to school for the first time?

How many families are new to Hillcrest School?

How many families are returning to Hillcrest School?



Hillcrest School is the
place to be!



Lisa Fischman
Principal




“Every child needs a *champion*: an adult who will never give up on them, who understands the power of connection and insists they become the best they can possibly be.”



Rita Pierson

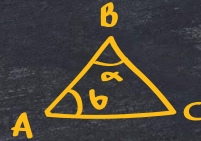
Heather's
Heart



Our goal is to
develop a love of
learning.



Growth Mindset



The belief that with practice, perseverance and effort, students have limitless potential to grow.

In Kindergarten, teachers and staff focus on praising the process, celebrating goals, and the idea that mistakes help us learn.

The Power of Yet
I can't do this...YET.
I'm not good at this...YET.
I don't understand...YET.

PowerSchool Parent Portal



The parent portal is now live!
On Friday, August 25th, finalized teacher assignments were posted on the Parent Portal.

Schedules, bus information, annual updates, babysitter forms for transportation, and more are all accessible to parents and families.

These forms must be completed on the PowerSchool Parent Portal before the first day of school:

- #1 Enrollment Verification
- #2 Contacts/Health Information
- #3 Residency Information
- #4 Dismissal Procedures and Transportation
- #5 Policy Agreements

IMPORTANT!! Please use the link below to set up or update your parent portal.

[Click here to create or update your PowerSchool Parent Portal.](#)

Please email msdannualupdate@msdk12.net if you need help accessing the PowerSchool parent portal.

Please remember to review your child's bus assignment the day before school starts for the most updated information.



School Day

Hours and Operations:

District Calendar 184 student days
(4 emergency days included)

Arrival and drop-off begins:
at 8:40 am

Dismissal and pick up begins at 3:00 pm or 2:58pm for buses

Is it important for students to be on time? Yes



Morning Arrival

- Morning drop off will begin at 8:40am in the Front Circle.
- We will stagger the buses and cars so that there is no intermingling.
- **THERE IS ABSOLUTELY NO PASSING ANY CARS OR BUSES IN FRONT OF YOU.**
- We will utilize all of the space in the front circle for arrival so please pull forward to the next available staff member.
- Cones will be located near each drop off door.
- **Students must exit the car on the right side (curbside)**
- Please do not drop children off before 8:40 a.m. unless they are enrolled in the Sunrise/Sunset program; school doors will not open until 8:40 a.m.
- **Parents are not allowed into the building on the first day of school.**





How will my child know where to go? ✨



Staff are in locations all around the inside and outside of the school.



Tomorrow you will get five color coded stickers



Labeled backpack - Please make sure they have something with their name on it.



Dismissal

- To ensure the SAFETY of your children, any changes in your child's dismissal plans must be reported to the main office no later than 12pm.
- Afternoon Dismissal will begin at 3:00 p.m.
- Parking is available in the lower parking lot. Please walk up to the correct location and form a line. If there are cones blocking a space, please do not move the cones to park.
 - Kindergarten students will dismiss from the far door near the loading dock.
 - First grade and second grade students will be dismissed from the double doors near the first grade playground. Please leave promptly after picking up your child to ensure parking for other families.
- Students riding buses will begin dismissal at 2:58pm.





KINDERGARTEN PICK-UP

To ensure the ***safety*** of your children,
any changes in your child's dismissal
plans must be reported to main office
no later than 12pm.
973-292-2240

1st & 2nd GRADE PICK-UP

Please bring
identification!

PARKING



Classroom Assistants - TAS



In addition to our classroom teachers, each Kindergarten Class has a part-time teaching assistant. Teaching assistants provide support to all students in the classroom and are here for half the day.





Breakfast & Lunch & Recess

- ★ Breakfast and lunch will be served daily at school.
- ★ All families must still complete a lunch application.
- ★ Students are encouraged to bring in a healthy snack for the morning or afternoon.
- ★ Kindergarten students receive a recess period before or after lunch. Lunch assistants monitor students during recess and lunch.





Curriculum & Instruction



- ★ Ready Classroom Math - dynamic & adaptive, encompasses instruction for all types of learners, MyPath, "Try- Discuss -Connect"
- ★ Sonday Systems- multisensory approach to phonics and phonemic awareness, decoding Movement & Interactive Centers
- ★ Social Studies
- ★ Science
- ★ More to come on Back to School Night!



Special Area Classes

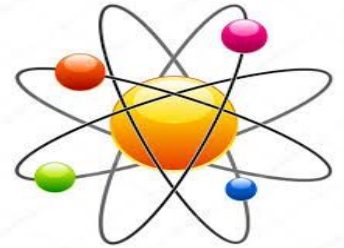
Art



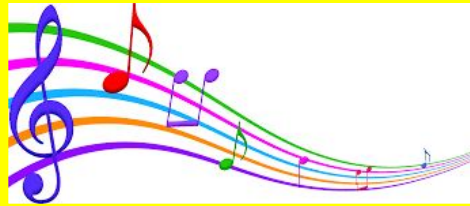
Library &
Technology



Science



MuSic

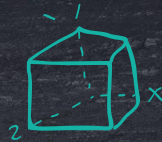


Physical Education



Assessments

We use multiple measures to assess our students. Assessment is used to determine reading level, monitor progress and design targeted instruction to ensure mastery of the standards.



Determine Mastery of Standards:

- ★ i-Ready Diagnostic (3x a year)
- ★ Reading & Writing Unit Assessments
- ★ Math Unit Assessments

Determine Reading Level:

- ★ DRA (Developmental Reading Assessment)

Determine Phonics/Word Study Levels:

- ★ Sonday Systems
- ★ i-Ready Diagnostic

Continuing with thinking about assessments...



Popcorn is prepared in the same pot, in the same heat, in the same oil, and yet, the kernels do not pop at the same time.

Don't compare your child to other children. Their turn to pop is coming. -

Author Unknown

Kids are like popcorn kernels, they don't all pop at the same time.



Progress Reports/Conferences



K-5 report cards are Standards-Based and aligned to trimester reporting periods and provide feedback on student achievement toward learning standards.

Report Cards are shared electronically through the parent portal. The report cards for the first two trimesters align with Parent Teacher Conferences and do not include a narrative.

Fall Conference Dates - usually around November

1st Trimester Report Cards - in December

Winter Conference Dates - In February

2nd Trimester Report Cards - March

3rd Trimester Report Cards - June



Technology & Supplies

Kindergarten students will have a class set of chromebooks to utilize during instruction.

Students access Google Classroom and learning platforms through their Clever account. [Click here](#) for our online learning platforms.

Classroom supplies will be provided for all students. All they will need is a backpack.





Hillcrest School HSA

The Home and School Association organizes cultural arts events, fundraisers, and volunteer opportunities throughout the school year.



Meetings are held for all stakeholders in the school.

Presidents: Victoria Schittone & Sarah Tremallo-Garcia



<https://hillcresthsa.membershiptoolkit.com/home>

Communication



MSD Alerts & Communication

Keep us updated with your information!



Family Newsletters

Please read them in their entirety!



ClassDojo

Teacher/Parent
Communication & School
Story



Staff have 48 hours
to respond.

PowerSchool Troubleshooting

Any issues with PowerSchool or alerts,
please email:

msdannualupdate@msdk12.net





Tomorrow!



- ★ Please line up outside the front circle promptly at 1:30pm by your child's teacher. Staff will be available to help.
- ★ Parents and students will enter the building. No siblings allowed.
- ★ School tour- classroom visit- see and practice seatbelt on the bus
- ★ HSA playdate at the conclusion of the kindergarten visit



KINDERGARTEN
HERE I COME!



Thank you!

Lisa.Fischman@msdk12.net

973-292-2240

