

INSPIRING COURAGEOUS CURIOSITY

 Catlin Gabel

AN EDUCATION CENTERED ON EXPERIENCE

An education should inspire students to harness their innate curiosity and courage; to ask questions and search for solutions; to find joy in connection with others and the natural world; and to discover their true potential.

By having confidence in their own knowledge and skills, students can discover how to face uncertainty, lean into the unknown, and speak up and out, advocating for themselves and others. They will become lifelong learners and leaders who want to change the world.

This is Catlin Gabel.

TABLE OF CONTENTS

pg 2 **A CONNECTED COMMUNITY**

pg 8 **ENGAGING ACADEMICS**

Beginning & Lower School

Middle School

Upper School

pg 28 **PREPARED GRADUATES**

pg 30 **BEYOND THE CLASSROOM**

pg 36 **WHAT ELSE TO KNOW**

pg 40 **GET IN TOUCH WITH US**



A CONNECTED CAMPUS CREATES COMMUNITY

Surrounded by nature just outside the city.

This is how the Catlin Gabel campus is often described. What sets us apart? It's the grassy hillsides, meandering pathways, and established gardens; the abundance of trees of all shapes and sizes in our meadows, fir grove, and apple orchard; and the wildlife that make this place their home, including the occasional eagle flying overhead. It's the open spaces and quiet nooks, perfect for playing and jumping, exploring and studying. It's the buildings and playgrounds, barn and paddock, and track and fields that complete our 67-acre campus.

But most importantly, it's our 787 students who arrive on campus each day from 51 different neighborhoods that comprise the Portland area, bringing with them their unique perspectives and personalities, their energies and enthusiasm to create an environment unlike any other.

The Upper School quad and Portland's northwest hills.

EMPOWERING STUDENTS EVERY STEP OF THE WAY

Teachers love their work and it shows.

Their commitment propels students forward, helping them gain the confidence and knowledge they will need to rise to the challenges of life.

They take the time to get to know their students as individuals so they can understand every student's educational strengths and needs. Their support, enthusiasm, and knowledge inspire students to dig deeper into questions, to take risks that help them grow, and to keep trying when their first attempt falls short. They help students discover their unlimited potential.

Faculty do not work in a vacuum. They collaborate across divisions, departments, and within grade-level teams to create integrated learning experiences, and they continue to hone their skills, developing new techniques and approaches to engage students in immersive ways.





LEARNING THROUGH ENGAGEMENT

Conversations and questions are encouraged.

Progressive education is founded on the idea that students learn best when they are actively engaged. This is why classes focus on creative thinking, hands-on experimentation, and reflective observation. They are also intentionally small in size so students learn in concert, forming ideas based on the ones that came before.



Students become critical thinkers, writers, and speakers, moving from the concrete to the abstract as they grow older. Because we are one school with three divisions, the curriculum is intentionally designed from preschool to grade 12. Division heads work together to form a cohesive plan and structure. Each year progresses with purpose, offering students a complete educational journey during these formative years.

But the voices of our students and teachers cannot be a monolith; knowledge and perspectives deepen when different backgrounds, cultures, and races are represented and included in classes and conversations. Equity and inclusion are paramount. Employees from across the school, along with the Equity and Inclusion team, work with each other, as well as students, families, and external partners to raise awareness and build connections to represent and uplift myriad voices, benefiting every member of our community.



BEGINNING & LOWER SCHOOL

Preschool through 5th Grade



Vishal Parekh P '29, '34

“Kids are encouraged to think outside the box through structured and unstructured methods, and learning happens in the classroom and outside in nature.”



PRESCHOOL & KINDERGARTEN

*Discovering the joys of
finding their voice.*

Our youngest students learn to not only speak for themselves but how to listen and work with others. Teachers encourage conversation and reflection, connection with others and the natural world, as well as play and movement, tapping into each student's innate love for exploration and discovery. Our preschool and kindergarten students are valued for their questions and intellect, and they are taught how to ask questions, seek answers, and problem solve, while also building the skills needed to be part of a community of learners. Each day, they engage in literacy, mathematics,

and inquiry through play and exploration, as part of our commitment to educating for democracy. In addition to the homerooms in the Beehive, students create art using a range of materials in a studio space; express themselves through song, rhythm, and music; participate in physical activities in the mini-gym and on the playground; and construct projects using basic tools in the woodshop. By the end of kindergarten, students identify themselves as learners who are active participants in their educational journey.



CLASSROOMS

- Preschool student-teacher ratio of 20:2
- Kindergarten student-teacher ratio of 19:1
- 20 students in PS and 38 students in K

SCHOOL DAY

- 8:20 a.m.-3:00 p.m.
- Daily recess outdoors
- Bring your own lunch or purchase school lunch

TEACHERS AND SPECIALISTS

- Homeroom teachers: literacy, mathematics, inquiry
- Specialist teachers: woodshop, music, studio art, wellness, library skills
- Full-time BLS counselor and learning specialist; literacy specialist supports K

LEARNING SPACES

- Three large homerooms with distinct learning areas and kitchen
- Covered outdoor space and dynamic playground
- Dedicated art studio, woodshop, music classroom, mini-gym, shared library

EXTENDED DAY PROGRAM

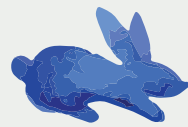
- Before-School opens at 7:20 a.m. and is included in tuition
- After-School runs from 3:00-6:00 p.m.

Our learning environments provide students with access to different types of equipment and materials, and all encourage connection and collaboration.



Lori Ireland P '25, '32

“Student voices, no matter how young, are heard and valued. From the first day that my child stepped on campus, he felt appreciated and valued for who he is as an individual.”



GRADES 1–5

Students are inspired to ask questions and seek answers.

This type of education is possible when teachers see every student and hear every voice. Our teachers work side-by-side with their students, helping them realize the power of knowledge and of self-discovery, whether they are engaging in conversations in classrooms or exploring the natural world. Students in first through fifth grade are guided by homeroom teachers in the Lower School and meet regularly with a variety of specialist teachers in science, technology, art, language, library, and wellness in dedicated buildings, such as the Art

Barn, Music, and Woodshop. Starting in the first grade, students begin to use iPads with curriculum-based software. They gain strategies and skills that help them thrive as individuals and as part of a group. They learn how to take ownership of their actions, such as working together on classroom agreements or practicing the steps of conflict resolution. By the end of fifth grade, they are ready to move on to Middle School with a sense of their individual strengths and skills.



CLASSROOMS

- Student-teacher ratio averages 21:1 and teaching assistants support grade level instruction
- 215 students in grades 1-5

SCHOOL DAY

- 8:10 a.m.-3:10 p.m.
- Daily recess outdoors
- Bring your own lunch or purchase school lunch

TEACHERS AND SPECIALISTS

- Homeroom teachers: literacy, mathematics, social studies
- Mandarin and Spanish teachers
- Specialist teachers: art, music, science, wellness, woodshop, technology, library skills
- Full-time counselor, learning specialist, math specialist; literacy specialist supports grades 1-3
- Equity and Inclusion Office
- Small, mixed grades meet with faculty advisors (known as C&Cs)

LEARNING SPACES

- Two large homerooms with distinct areas for learning activities
- Art studio, music and language classrooms, woodshop, community library
- Dynamic playground, Fir Grove, and orchard

TECHNOLOGY

- One assigned iPad for every student

EXTENDED DAY PROGRAM

- Before-School opens at 7:20 a.m. and is included in tuition
- After-School runs from 3:00-6:00 p.m.

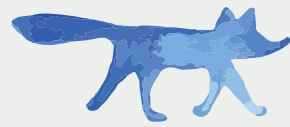
MIDDLE SCHOOL

6th through 8th Grade



Chloe Moreau '27

“Recently, Catlin had a medical day for 8th graders where we explored different positions in the field, which broadened my view of medicine. These hands-on learning experiences will prepare me for adulthood.”



GRADES 6–8

*Students do not walk alone no
matter the path chosen.*

Middle school students are challenged to push past their comfort zones and open themselves to new possibilities. This is a time when students discover who they are, how they learn, and what they are interested in. Their teachers are experts in their disciplines of study and in working with middle schoolers. They guide them through this journey so that they gain confidence in their own potential. Students also study side-by-side with classmates to broaden their understanding of the world around them. The Warren Middle School serves as the hub for community and learning, and our curriculum

prepares them for what lies ahead. They take classes in seven core areas, including one of three modern languages and a range of arts offerings—from drama, studio art, and media arts to music and woodshop. Every student receives an iPad with apps that allows them to delve into the many forms of communication. On-campus experiences can be expanded with class trips and excursions through our Outdoor and Global Education Programs. By the end of 8th grade, students have deepened their critical thinking, can apply evidence and reasoning, and take initiative to realize personal goals.



STUDENTS AND TEACHERS

- Student-teacher ratio of 15:1
- 194 students in grades 6-8

SCHOOL DAY

- 8:30 a.m.-3:20 p.m.
- Before and after school supervision or activities at no charge: 7:15 a.m. arrival; 6:00 p.m. pick-up

CURRICULUM

- English, social studies, math, science, modern languages (Spanish, Mandarin, French), PE, the arts
- Instruction in executive functioning, health and wellness, library research, technology, digital citizenship

LEARNING SPACES

- Warren Middle School: classrooms, library, common area
- Creative Arts Center, Woodshop studio
- Miller Swigert Gym, Murphy Athletic Complex with fields and track

ADVISORY AND SUPPORT

- Small, mixed-grade groups (known as C&Cs) meet regularly with faculty advisors
- Full-time MS librarian, MS counselor, Learning Center
- Equity and Inclusion Office

ACADEMIC AND CO-CURRICULAR

- Clubs, activities, and affinity groups
- Performing arts and after-school drama program
- Middle School sports programs
- Global and Outdoor Education Programs

During "Breakaway," Middle School students and teachers spend three days engaging in a focused activity from tinkering and video storytelling to exploring art galleries and the outdoors.



UPPER SCHOOL

9th through 12th Grade



Ben Rosenfeld '23

“In my 14 years here, every teacher has brought a high level of dedication, and Catlin’s emphasis on self-advocacy and rigorous course offerings make me feel confident heading into college.”

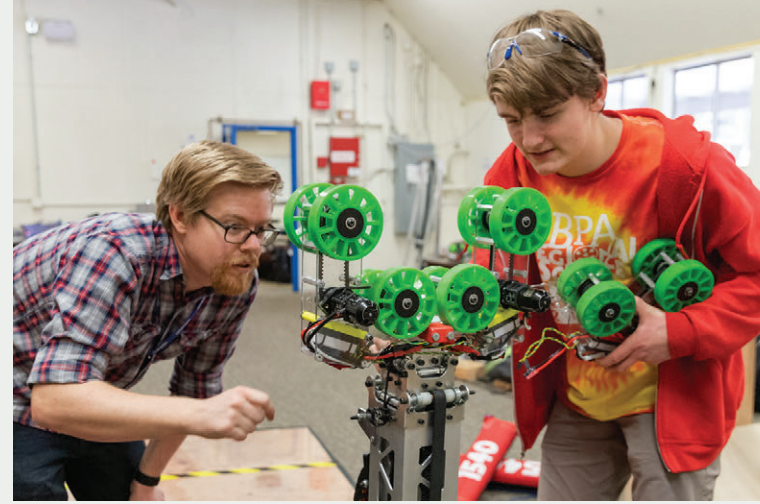


GRADES 9–12

*Learning is deeper when students
can engage in conversations.*

Empowered by knowledgeable, supportive teachers, Upper School students find what sparks their curiosity, discover solutions to problems, and learn to take another route when the first does not succeed. There are close to 150 classes to choose from across all disciplines, including honors level. Students can also take courses from a consortium of world-wide independent schools through the Global Online Academy, providing even further academic depth and a connection to peers globally. Our facilities are designed with myriad tools and equipment for active learning.

In addition to classrooms and labs, inquiry and discovery take place in student-run clubs and activities, affinity groups, community engagement opportunities, and outdoor excursions, as well as local, national, and international trips. This is an environment that fosters critical thinking and continuous growth. In preparation for their next chapter as active participants in the world, seniors complete a month-long project at an organization of their choosing or engage in self-directed learning with a mentor.



STUDENTS AND TEACHERS

- Student-teacher ratio of 15:1
- 320 students in grades 9-12
- School day is 8:30 a.m.-3:20 p.m.

CURRICULUM

- English, social studies, mathematics, science, modern languages (Spanish, Mandarin, French), computer science, the arts, health and PE
- Online classes through the Global Online Academy
- Immersives and interdisciplinary project-based courses
- Month-long senior project

LEARNING SPACES

- Dant House: classrooms and student lounge areas
- Creative Arts Center
- Miller Library
- Woodshop and ceramics studios; engineering and robotics labs
- Math Building, Semler Science Building
- Hillman Modern Languages Center, Vollum Humanities Center
- Miller Swigert Gym, Murphy Athletic Complex with fields and track

ACADEMIC AND CO-CURRICULAR

- 40+ clubs, activities, affinity groups
- Engineering and Robotics; Performing Arts
- JV and Varsity Athletics
- Global and Outdoor Education Programs

ADVISORY AND SUPPORT

- Small, mixed-grade groups (known as C&Cs) meet regularly with faculty advisors
- Two librarians, two counselors, two college counselors, learning specialist, academic dean, dean of students
- Equity and Inclusion Office



Upper School students use the labs and equipment in the Science Building to conduct hands-on experiments and research.

READY TO MEET THE FUTURE

Looking ahead to what comes next.

Our students have solved technical challenges and created artistic solutions; won state, regional, and national awards; and, most importantly, they have discovered their unique talents and know how to use them to create change.

In a typical year, 100% of Catlin Gabel graduates go on to colleges and universities across the nation and internationally. Our college counselors provide personalized support throughout the process. They offer an array of opportunities each year, including an annual school-day college fair that all Upper School students are encouraged to attend. For ninth and tenth graders, they annually preview the college process and answer students' questions. For juniors, they organize a day-long fall retreat at a local college where they discuss the search and application process, prompt students' first reflections on college preferences, introduce them to admission deans, and organize a tour of the campus. This retreat helps set the tone for the many college conversations and information sessions that occur during the next two years. The counselors work closely with juniors and seniors and their families, individually and in larger groups, including the required college application workshop. Our college counselors are here to help students identify the schools that best align with their abilities and interests and to oversee their applications to college or other post-secondary plans.



WHERE GRADUATES STUDY

Four or more Catlin Gabel graduates from the classes of 2020-2023 have matriculated to the following colleges:

Boston University
Bowdoin College
Carleton College
Colorado College
Dartmouth College
Emory University
Macalester College
Northeastern University
Northwestern University
Oberlin College
Occidental College
Pomona College
Scripps College
Stanford University
Swarthmore College
Tufts University
University of Chicago
University of Colorado Boulder
University of Michigan-Ann Arbor
University of Oregon
University of Washington
Washington University in St. Louis
Yale University

BEYOND THE CLASSROOM

Student Activities and Co-Curricular Programs





THE ARTS

Music, theater, and visual arts are an integral part of learning. Students across the grades take part in informal and formal musical and theater productions and exhibit their art throughout the year.

In the BLS, specialist teachers encourage students to express themselves in art, woodshop, music, and dance. In MS, students take a rotation of classes in studio art, woodshop, digital media arts, music, and drama. In US, students can select a range of classes, which can include acting and musical dance; recording, songwriting, choir, chamber music, jazz band, and rock band; drawing, design

studio, ceramics, woodshop, sewing, jewelry design, podcasting, photography, and video.

ENGINEERING AND ROBOTICS

The Robotics team works with mechanical, software, electronics design, and fabrication to create robots that compete against other high school teams in the FIRST Robotics Competition. The Community Engineering teams use their skills to address needs in the community by working with outside organizations. Past projects have included water purification systems, engineering tools to assist the disabled, and solar powered pods that provide laundry and shower facilities for the

houseless. Robotics and Engineering both regularly compete and win at regional, state, and national competitions.

Program Specifics

- Open to all students in grades 8-12, no experience needed
- Balanced mix of participation across gender identities
- The FIRST robotics team is known as 1540 The Flaming Chickens
- Robotics team has consistently participated at the Houston World Championships
- The engineering group has won more than \$60,000 in prizes
- Engineering teams have won the Congressional App Challenge (OR district) three times since 2018

ATHLETICS

Our student-athletes and athletic teams consistently win individual and team championships across different sports at districts and state, and our coaches are

celebrated for their dedication to their players. At the more competitive levels, tryouts are required and team selection and playing time is not guaranteed, but this is not the case at every level. We have a no-cut policy and invite students of every skill level to join in because we believe that participating in sports builds character and resilience that lasts far beyond a season. Because of this philosophy, we have high participation rates—on average 80% of Middle School students and 75% of Upper School students take part in at least one sport on MS, JV, JV2 or Varsity teams.

Middle School Sports: soccer, cross country, tennis, girls volleyball, basketball, track and field

Upper School Sports: soccer, cross country, girls volleyball, swimming, basketball, skiing, baseball, tennis, golf, track and field

Facilities: Miller Swigert Gym (gym, weight room, mini-gym, classrooms); Murphy Athletic Complex (2 soccer fields, track, baseball field); Tennis Courts (indoor and outdoor)



AFFINITY/IDENTITY GROUPS AND CLUBS

These groups and clubs provide spaces for students to have fun exploring their similarities and differences, shared interests, and intersections of identity while developing their sense of self. No year is the same, as students decide which activities matter to them. Affinity Groups provide spaces for students who identify with historically-marginalized groups, starting in Lower School, to have a majority experience and speak from the “I” voice. Identity Groups provide spaces for students who identify with dominant cultures to make room for real-life, nuanced experiences of who they are and who they want to be within an inclusive community. Middle School and Upper School students can join any club that aligns with their interests or goals.

Examples of Affinity Groups and Clubs

- All Queer Environment (LGBTQ+ Affinity)
- Asian-American Affinity
- Communicare
- Chess Club
- Environmental Action Team
- Jewish Affinity
- Just Dance League
- Mock Trial
- Model United Nations
- Multi Culti (Multiracial Affinity)
- Science Olympiad
- Yoga

COMMUNITY ENGAGEMENT

We actively seek ways for students at every grade level to engage in activities that broaden their perspectives. There are opportunities for students to form connections and to learn from each other and in the surrounding community.

We have partnerships with a diverse group of organizations, including those that support social justice, the environment, or other service-oriented endeavors. Below are examples of typical opportunities.

Beginning & Lower School: Students participate in different projects throughout the year, including supporting school recycling efforts, creating art for a hospice facility, and gathering fruit from the campus orchard to support a local food bank.

Middle School: Through organized activities, students and teachers support local organizations. Past projects have included stocking local food pantries, working in community center gardens, cleaning up local parks, and working in the school’s gardens.

Upper School: Students develop a personal plan for community engagement to guide their work for that year. Past projects include volunteering at a youth suicide prevention organization, organizing a book drive for inmates, and producing drug prevention videos for area schools.

GLOBAL EDUCATION

Learning happens everywhere, and our Global Education programming immerses Middle and Upper School students in countries across the globe so that they can experience different languages, cultures, histories, policies, and environments. In Middle School, trips focus on gaining cross-cultural understanding. In Upper School, students explore topics based on the location, such as art and architecture, environmental impacts and recovery efforts, or womens’ roles in society. The goal, no matter



the location, is to broaden students’ horizons so they can become global citizens and help address the challenges of the future. Trip programming is evaluated annually based on travel or environmental restrictions.

Past Trip Loci

- | | |
|---------------------|-------------|
| • Botswana | • India |
| • Cambodia | • Japan |
| • China | • Nepal |
| • Costa Rica | • Nicaragua |
| • Ecuador | • Peru |
| • France | • Rwanda |
| • Galápagos Islands | • Taiwan |
| • Guatemala | • Turkey |

OUTDOOR EDUCATION

The natural world can be an excellent teacher, encouraging students to push past their comfort zones. Students discover the power of working together, whether it’s summiting a mountain or making decisions as a group, and they experience the rewards of not always taking the quickest route to reach a destination. This year, we’re laying the groundwork to integrate Outdoor Ed skills into existing grade-level trips and field experiences, as well as offering a limited selection of opt-in Outdoor Ed experiences for MS and US students.

Past Excursions

- Rock climbing at Smith Rock State Park
- Camping in yurts on the Oregon Coast
- Nordic skiing in Glacier National Park
- Snowshoeing in Gifford Pinchot National Forest
- Whitewater rafting on the White Salmon River
- Surfing at Short Sands Beach
- Backpacking on the Olympic Peninsula
- Sea kayaking in the San Juan Islands

WHAT ELSE TO KNOW

Information and data reflects the 2023-24 academic year.

MISSION AND VALUES: Catlin Gabel fosters compassionate and curious citizens of the world by inspiring in every student a love of learning and the courage to take responsible action. Our values are: integrity, inclusion, and kindness.

EDUCATION PHILOSOPHY: Our curriculum is based on four principles of progressive education: Experiential Learning, Spirit of Inquiry, Teaching the Whole Child, and Educating for Democracy.

CAMPUS SIZE AND LOCATION: 67 wooded acres 5 miles west of downtown Portland. Community Arts Programs on 8.5-acre East Campus (formerly Oregon College of Art and Craft).

ACADEMIC DIVISIONS: Beginning and Lower School (preschool-grade 5); Middle School (grades 6-8); Upper School (grades 9-12).

ENROLLMENT: 787 total students; 58 preschool and kindergarten students; 215 students in grades 1-5; 194 students in grades 6-8; 320 students in grades 9-12.

DIVERSITY: Families represent 28 countries of origin; 40 different languages spoken at home. Students self-identify as: 11% Asian/Asian American; 3.7% Black/African American; 1.4% East Asian/East Asian American; 2.4% Latinx/Hispanic; 0.8% Middle Eastern; 28.8% Multiracial; 0.1% Native American/Alaska Native; 0.1% Pacific Islander/Native Hawaiian; 4.1% Southeast Asian/Indian; 46.2% White; 1.4% Not listed/prefer not to answer.

TUITION: \$33,500 for PS & K; \$35,900 for Lower School; \$39,100 for Middle School; \$41,500 for Upper School.

FINANCIAL ASSISTANCE: 26% of students receive financial assistance with household incomes from \$22,965 to \$332,960; average award per student is \$27,430, ranging from \$8,900 to \$40,950; more than \$5.6 million is allocated in total.

EXTENDED DAY PROGRAM: Before-School opens at 7:20 a.m. and is available at no extra cost; After-School runs until 6 p.m.; rates are based on frequency of participation for Beginning & Lower School students. The Middle School offers supervision at no extra cost, which runs until 6 p.m.

FOOD SERVICE: SAGE Dining Services serves healthy lunches and snacks to every grade level; locally sourced when possible; vegetarian and gluten-free options available daily.

LIBRARIES: Each academic division has a dedicated library and librarians who work directly with students and teachers to support curriculum and instruction.

SUPPORT PROGRAMS: Counselors and learning specialists work closely with each division.

TRANSPORTATION: 21% of students use Catlin Gabel buses daily; they serve five different areas of Portland. Families have access to a carpool locator via myCG portal. Public buses stop right outside campus; Max Light Rail is a 10-minute walk.



CATLIN GABEL CAMPUS

CAMPUS FACILITIES

Toad Hall: Administration

Cabell Center Theater

The Barn: Food Services

Miller Swigert Gymnasium

Indoor Tennis Court 1

Indoor Tennis Court 2:

Ceramics

Woodshop

Facilities and Business Office

Human Resources

Grounds Shop

BEGINNING & LOWER SCHOOL (BLS)

The Beehive: Beginning School

Lower School: BLS Office

Art Barn

Music

Woodsby Languages

Nutshell: Extended Day

MIDDLE SCHOOL (MS)

Warren Middle School: MS Office

UPPER SCHOOL (US)

Vollum Humanities Center:

Learning Center

Equity and Inclusion Office

Dant House: US Office

Dr. Herbert & Shirley Semler Science Building

Math

Hillman Modern Languages Center

James F. Miller Library: College Counseling

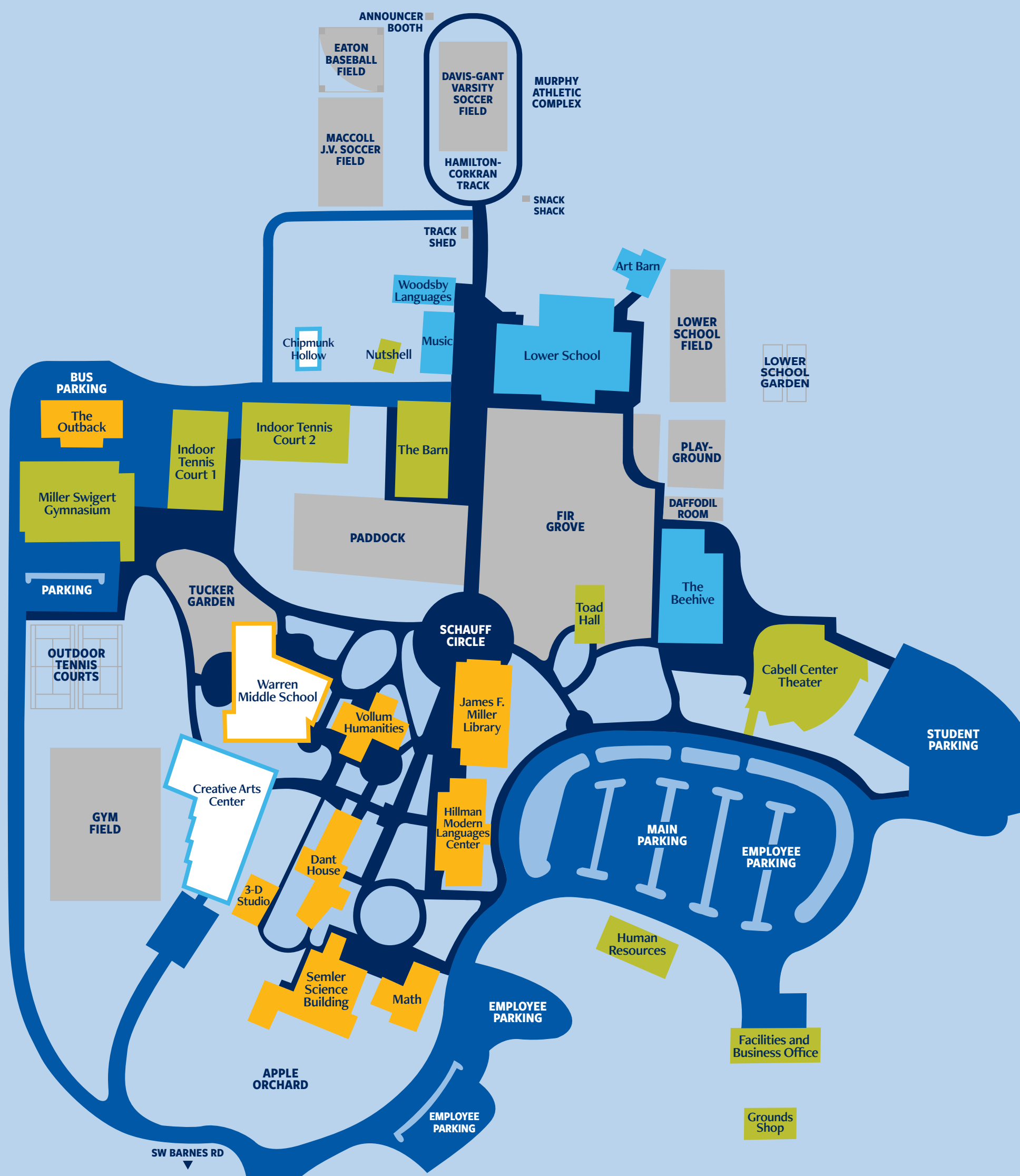
The Outback: Robotics and Engineering

3-D Studio

MIDDLE SCHOOL AND UPPER SCHOOL

Creative Arts Center

Chipmunk Hollow: Music








GET IN TOUCH WITH US

Catlin Gabel's Enrollment Team can provide further information about our school campus and programs and can connect you with teachers, students, and parents/guardians.

ENROLLMENT OFFICE:

enrollment@catlin.edu
(503) 297-1894
catlin.edu

SOCIAL CHANNELS:

 @catlingabelschool
 @catlingabel
 @catlingabelschool

