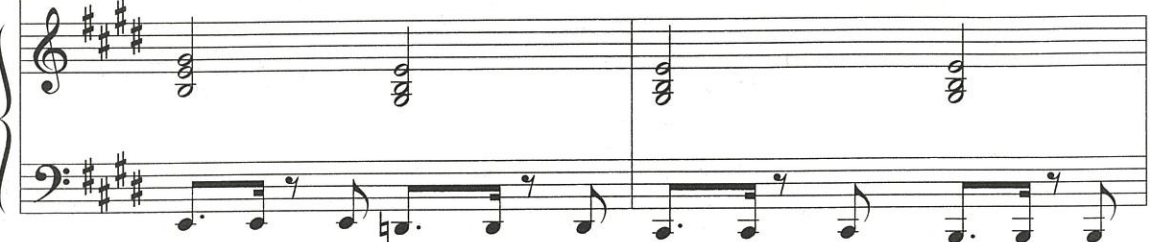


33

E E/D E/C# E/B



fin - 'ly here, shout and cheer! Who will spell things right?



35

A E/B 4 Bsus B



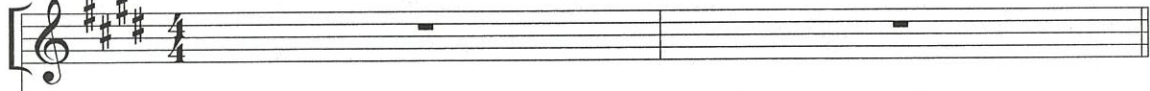
Such ex - cite - ment in the air, the Spell - ing Bee's to - night!



PRONOUNCER: I'm Miss Foster, your Pronouncer.

37

E B7sus D E



SOLO (Miss Foster)

39

mp B/D# simile C#m E/B



This year at our Spell - ing Bee, ev - 'ry - one will learn to



mp legato

simile

41 A E/G# F#7 B

spell the names of Je-sus; that's how the points are earned. The

43 E B/D# C#m E/B

or - i - gins from which they came and the def - i - ni - tions, they'll

45 A E/G# 5 Bsus B E

help us learn our Sav - ior's names through this com - pe - ti - tion!

JUDGE: Now, does everyone know the rules?

47 C Bb/C C f F C/E

*KIDS*

This year at our Spell - ing Bee,