

Getting started with your school's new Remind Hub

PARENTS



For parents at a school with Remind Hub

Remind Hub comes with additional classes, bigger class sizes, longer messages, and more.

So your school recently purchased Remind Hub. Congratulations! Whether you're brand new to Remind or a longtime user, getting started is easier than ever.

In this guide, we'll walk you through the following steps:

- Step 1: Set Up Your Parent Account
- Step 2: Set Your Notification Preferences and Account Settings
- Step 3: Join Classes
- Step 4: Send and Receive Messages

It's a simple process, but we've put together how-tos, tips, and other resources for using Remind with your school—so let's dive right in.



Step 1: Set Up Your Parent Account

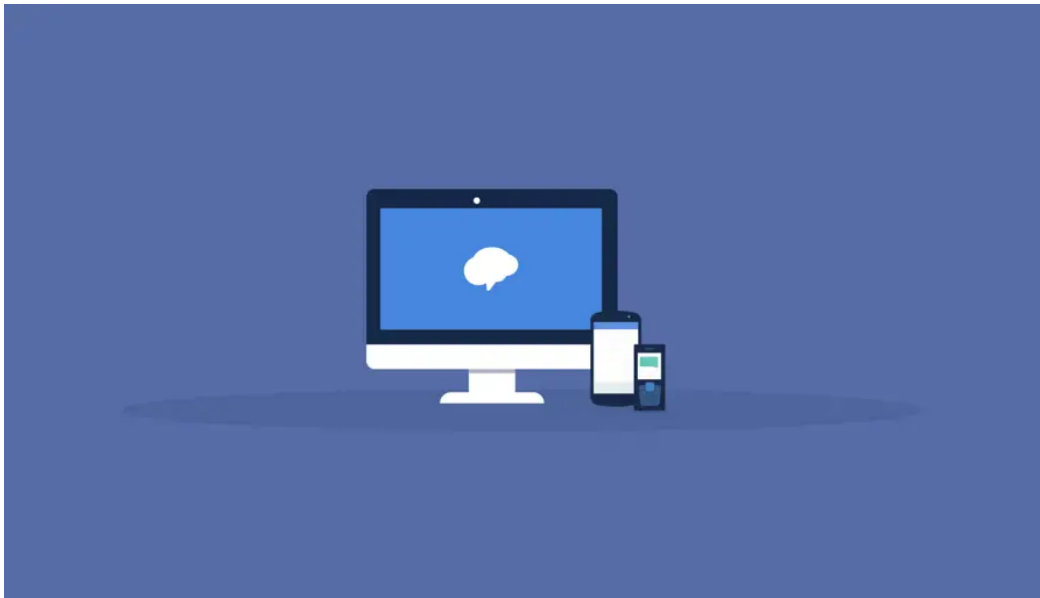
If your school is rostering, check your email on file with the school for instructions on how to log in and claim your account and join your classes.

- Set up your [rostered parent account](#)

Otherwise, log in to your current Remind account, or create a new account—if you don't have one already.

TIP: Two accounts aren't better than one. If you've used Remind in the past and think you might have multiple accounts, make sure to [merge them](#) so everything lives in the same place.

Step 2: Notification Preferences and Account Settings

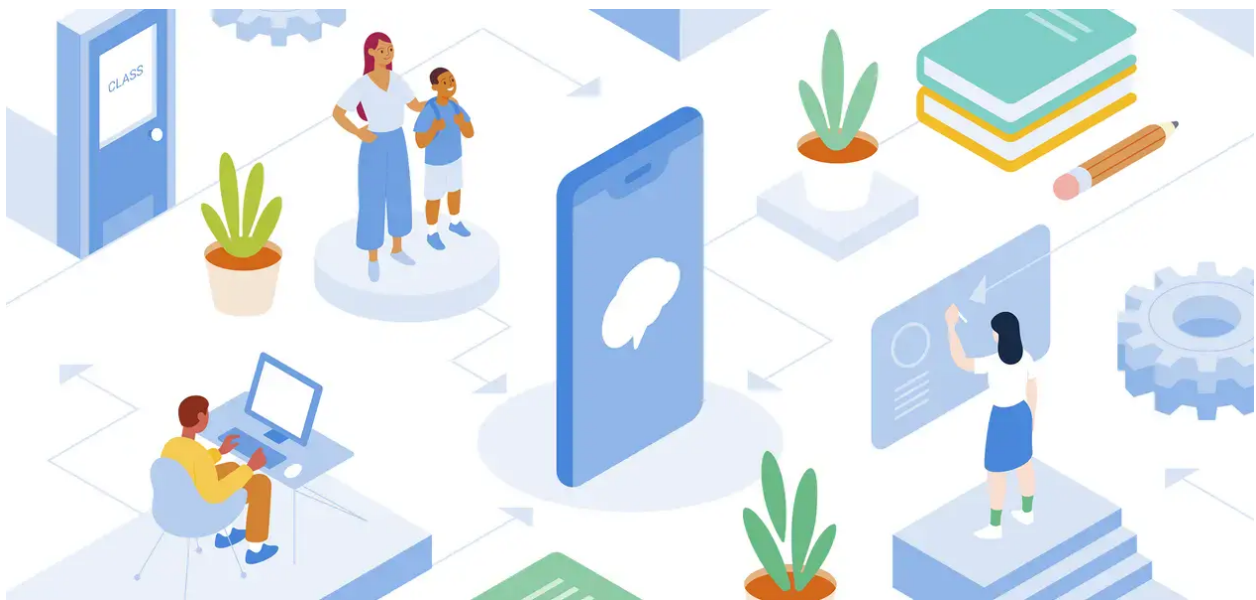


Once you've logged in, go to your account preferences to choose how you'd like to get message notifications; your email, SMS text, or through the [Remind app](#).

- [Set your personal notification preferences](#)
- [Set your preferred language](#)

Now that you've chosen how to receive messages through Remind, take some time to confirm your Profile settings are correct, inside your Account Settings. There you can edit your name and contact information, and set your Preferred Language:

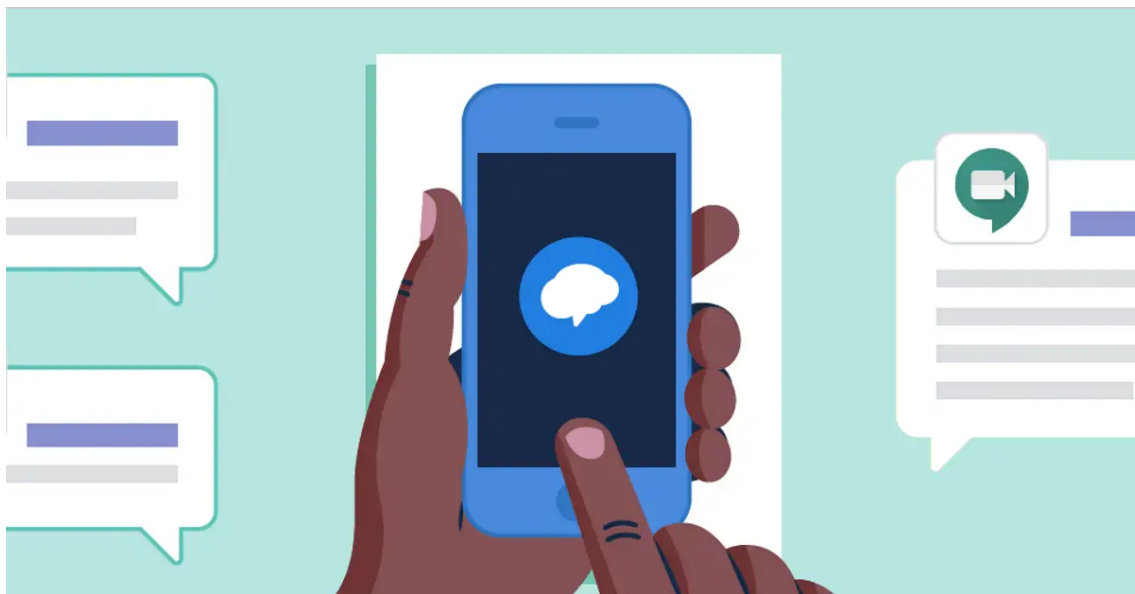
- [How do I add a profile photo and edit my name?](#)



Step 3: Join Classes

Joining classes takes just a few minutes. If your school is rostering, keep an eye out for an email about your account, and you'll be added into your classes automatically. Otherwise there's other ways to join classes:

- 4 Main Ways to [Join a Class](#)
-



Step 4: Send and Receive Messages

Now that you have your classes set up, you're ready to send out your first message. When you want to create a new message, use the composer:

- [New Composer](#) to send messages

Also take a look at your messages you've received so you can stay up to date with happenings being discussed in Remind. If you want to learn about other ways you can reply to messages, here's a few articles:

- [Receiving Messages via Text](#)
- You can [React to a Message](#) with an emoji
- [How do I send a personalized voice message](#)

And that's it—you're all set up with Remind at your school!

Questions on anything in this guide? Don't hesitate to take a look in our [Help Center](#) library of articles for how-to guides about Remind features.